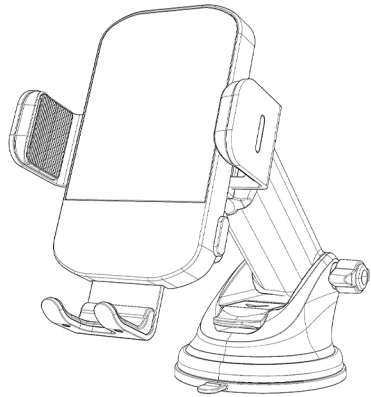


User Manual

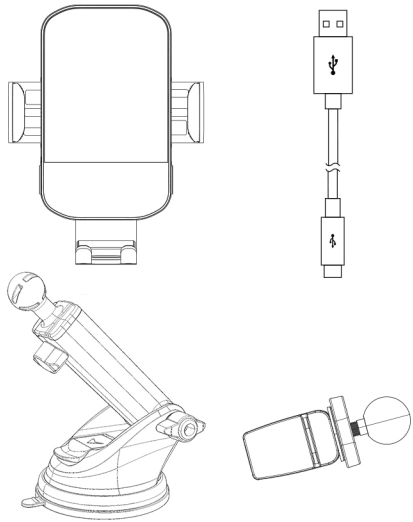


CB1005
Wireless car charger
FCC ID:2BF7P-WCCH

Thank you for choosing this product.
Please read the instructions carefully before using!

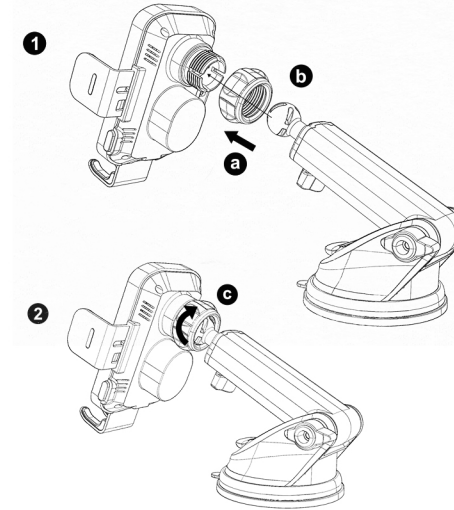
◀01▶

PACKAGE CONTENT



◀02▶

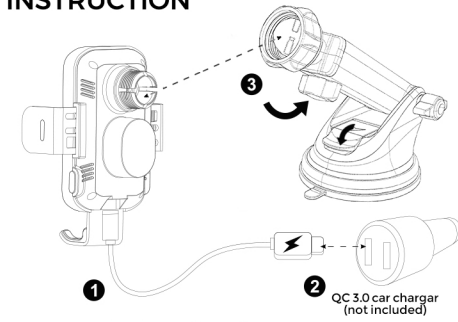
HOW TO INSTALL



- a. Put the nut to the ball head.
- b. Install wireless charger pad into the ball head.
- c. Tighten the nut.

◀04▶

INSTRUCTION

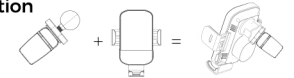


How to make it work well?

1. Use the cable came with the package to connect the power supply.
2. Please use QC3.0 car charger as its required source for fast charging mode.
3. The suction cup is suitable for smooth surfaces with no slope dust, such as dashboards and glass, etc.

2-in-1 Installation

Clip to the vent



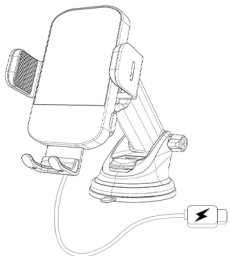
Install to the dashboard or windshield



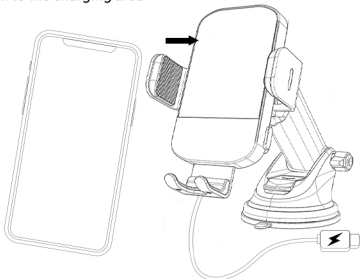
◀05▶

AUTO CLAMPING FUNCTION

1. After connecting to the power and pressing the button on side, the arm clamp would open.

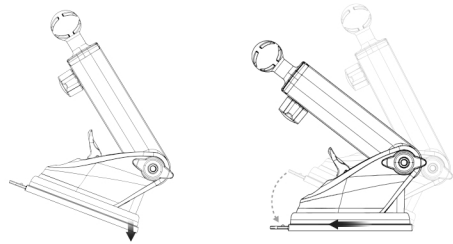


2. Placing the phone and the charger will automatically clamp and align to the charging area



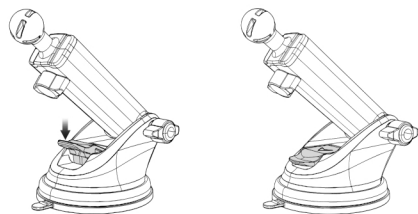
◀06▶

BATTERY INSTALLATION TUTORIAL



Step 1:
Fit from back to front

Step 2:
Remove the gas and press firmly



Step 3: Press the middle checkpoint to complete

◀07▶

SPECIFICATIONS

Input: 5V=2A, 9V=1.8A
Output: 5W / 7.5W / 10W / 15W (MAX)
Charging Distance: < 4MM
Input Interface: Type C

INDICATOR

POWER ON	Red light stays on
CHARGING	Blue light stay on
FOD	Red light flashes quickly

FAQ

Why doesn't this charger work?

- (1) Make sure your phone supports wireless charging function.
- (2) Use the cable came with the package to connect the power.
- (3) The thickness of the phone case does not exceed 4mm.
- (4) Make sure there is no metal material, magnetic objects, credit cards or pop holders on the back of your phone between the phone and the phone case.
- (5) If the charger's indicator does not light up after connecting the power supply, please contact us directly.

Why not fast charging or not charging?

Please use the QC3.0 car charger as its power source.

Why does the suction cup fall off the dashboard?

- (1) Make sure the dashboard is smooth, no slope and no dust.

◀08▶

- (2) There are two fixed knobs on the bracket, which can swing up and down and stretch. Please tighten the knob to avoid shaking.
- (3) A noteworthy detail is that before placing the product on the dashboard, you need to turn on the button, then press the suction cup where you want to place it, and finally fasten the button.

How to prevent your phone from overheating?

We suggest you close Apps to reduce power consumption and turn off phone screen during wireless charging.

15W / 10W / 7.5W Fast Charging

Note: Fast Charging mode requires QC3.0 Car charger (NOT INCLUDED)

15W: [LG] G7 V30 V35 V40 V50; G2, G2, G3, G6, Lucid2 (VS870), Optimus F5 (AS870), Vu 3, Spectrum 2, Optimus G Pro, Optimus, Vu II, Optimus LTE 2 [Google] NEXUS 4/5/6 Pixel 7, Pixel 7 Pro, Pixel 6 Pro, Pixel 6;

10W: [Samsung] S23 Ultra, S22 Ultra, S22+, S22, S21 Ultra 5G, S21+, S21, S21 FE, S20, S9, S9+, S8, S8+, S7, S7 Edge, S6 Edge Plus, Note 10 10+, Note 9, Note 8, Note 7, Note 5 Note FE, W2017 (SM-W2017), Kelly (SM-W2018), Galaxy S Lite (SM-C8750) and more;

7.5W: [iPhone] iPhone 15, iPhone 15 Pro, iPhone 15 Pro Max, iPhone 14, iPhone 14 Pro, iPhone 14 Pro Max, iPhone 14 Plus, iPhone 13, iPhone 13 Pro, iPhone 13 Pro Max, iPhone 13 Mini, iPhone 12, iPhone 12 Pro, iPhone 12 Pro Max, iPhone 12 Mini, iPhone 11, iPhone 11 Pro, iPhone 11 Pro Max, iPhone XKS, iPhone XSMAX, iPhone X, iPhone XR, iPhone 8, iPhone 8 Plus, iPhone 8 Plus;

WARRANTY CARD

Please feel free to contact us if you have any problems or suggestions with our products. We will provide you with free return and exchange services.

◀09▶

FCC Warning

This device complies with part 15 of the FCC Rules.

Operation is subject to the following two conditions:

- (1) This device may not cause harmful interference, and
- (2) this device must accept any interference received, including interference that may cause undesired operation.

Any Changes or modifications not expressly approved by the party responsible for compliance could void the user's authority to operate the equipment.

This equipment has been tested and found to comply with the limits for a Class B digital device, pursuant to part 15 of the FCC Rules. These limits are designed to provide reasonable protection against harmful interference in a residential installation.

This equipment generates uses and can radiate radio frequency energy and, if not installed and used in accordance with the instructions, may cause harmful interference to radio communications. However, there is no guarantee that interference will not occur in a particular installation. If this equipment does cause harmful interference to radio or television reception, which can be determined by turning the equipment off and on, the user is encouraged to try to correct the interference by one or more of the following measures:

- Reorient or relocate the receiving antenna.
- Increase the separation between the equipment and receiver.
- Connect the equipment into an outlet on a circuit different from that to which the receiver is connected.
- Consult the dealer or an experienced radio/TV technician for help.

FCC RF exposure statement:

The equipment complies with FCC radiation exposure limits set forth for an uncontrolled environment. This equipment should be installed and operated with minimum distance between 20cm the radiator your body.

Questions or Concerns?

✉ customerservice@chgeekdirect.com

◀10▶