

CHGEEK

WELCOME GUIDE

Magnetic Car Mount Charger
RC02

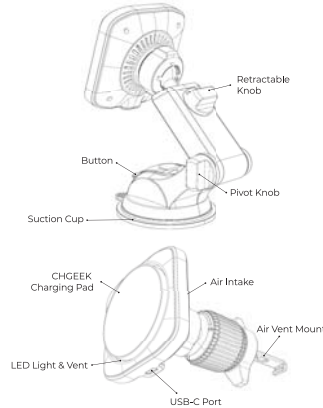
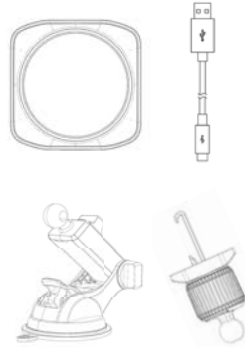
support@chgeekofficial.com

User Manual



Thank you for choosing this product. Please read the instructions carefully before using!

PACKAGE CONTENT

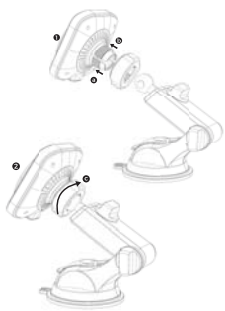


INSTRUCTION FOR USE

Precaution Before Use:

- Use a Compatible Case: Ensure your magnetic case is ≤4mm (0.16 in) thick or charge without a protective case. For non-magnetic cases, refer to the installation video to attach the included metal ring.
- Avoid Metal Interference: Do not place metal objects between the protective case and the phone.
- Use QC3.0 Charger: To ensure normal charging speed, use a QC3.0 car charger.
- Temperature Control: If the car interior is hot, turn on the air conditioner to maintain optimal charging speed.
- Temperature Range: Suitable for use between 0°C (32°F) and 28°C (82.4°F).

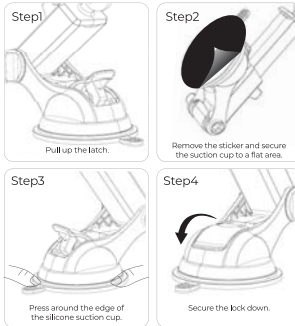
1.Assemble charger.



- | |
|--|
| a. Put the nut to the ball head. |
| b. Install charger pad into the ball head. |
| c. Tighten the nut. |

2.Peel off the stickers, then mount on the dashboard or windshield based on your preference. Note: Prior to installation, ensure the surface is flat and clean.

Install Suction Cup



3.Connect the charger to the power supply inside the car.



QC3.0 car charger (not included)

2-in-1 Installation

Clip to the vent.
Install to the dashboard or windshield.



SPECIFICATIONS

Input: 5V=2A, 9V=2A, 12V=1.5A
 Output: 15W max
 Product Standard: Qi
 Charging Distance: ≤4mm (0.16 in)
 Dimension: 71.80*71.5*42.4mm, 2.83*2.81*1.67 in
 Material: PC+ABS
 Operating Temperature Range: 0°C (32°F) —28°C (82.4°F)

WIDE COMPATIBILITY 7.5w Fast Charging

Note: Fast Charging mode requires QC3.0 Car charger (NOT INCLUDED).

7.5W: 【iPhone】 iPhone 15, iPhone 15 Pro, iPhone15 Pro Max, iPhone 14, iPhone 14 Pro, iPhone14 Pro Max, iPhone 14 Plus, iPhone 13, iPhone13 Pro, iPhone 13 Pro Max, iPhone 13 Mini, iPhone 12, iPhone 12 Pro, iPhone 12 Pro Max, iPhone 12 Mini, iPhone 11, iPhone 11 Pro, iPhone 11 Pro Max, iPhoneXS, iPhone XS MAX, iPhone X, iPhone XR, iPhone8, iPhone 8 Plus.

FCC Warning

This device complies with part 15 of the FCC Rules. Operation is subject to the following two conditions: (1) This device may not cause harmful interference, and (2) this device must accept any interference received, including interference that may cause undesired operation. Any Changes or modifications not expressly approved by the party responsible for compliance could void the user's authority to operate the equipment.

This equipment has been tested and found to comply with the limits for a Class B digital device, pursuant to part 15 of the FCC Rules. These limits are designed to provide reasonable protection against harmful interference in a residential installation. This equipment generates uses and can radiate radio frequency energy and, if not installed and used in accordance with the instructions, may cause harmful interference to radio communications. However, there is no guarantee that interference will not occur in a particular installation. If this equipment does cause harmful interference to radio or television reception, which can be determined by turning the equipment off and on, the user is encouraged to try to correct the interference by one or more of the following measures.

- Reorient or relocate the receiving antenna.
- increase the separation between the equipment and receiver.
- Connect the equipment into an outlet on a circuit different from that to which the receiver is connected.
- Consult the dealer or an experienced radio/TV technician for help.

FCC RF exposure statement:
 The equipment complies with FCC radiation exposure limits set forth or an uncontrolled environment. This equipment should be installed and operated with minimum distance between 20cm the radiator your body.