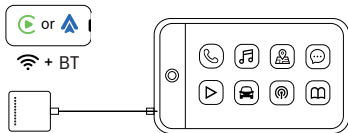


User Manual

Wireless Adapter



The wireless adapter is fixed for use in the car, and the car machine is wirelessly connected to the mobile phone to realize the Car Play function

Please read the manual carefully before use
Recommend keeping this manual for future reference

Compatibility Note

- Please make sure your car supports wired CarPlay/Android Auto.
- Required iPhone 6 or later iPhone models with iOS 10 or above for wireless carplay function.
- Required an Android smartphone that support latest Android Auto function and with Android 11 or higher of the Android operating system for wireless Android Auto function.

How to confirm if your car has Apple wired CarPlay or Android Auto function?

Method 1:

Connect your iPhone/Android samrtphone to your car by USB date cable and if there is a Carplay or Android Auto icon in the car stereo menu.



Method 2:

Check the compatible list below or check with your car manufacturer to see if your car has this capability:

Check out the website for supported car models



<https://www.apple.com/carplay/vehicles-model/>

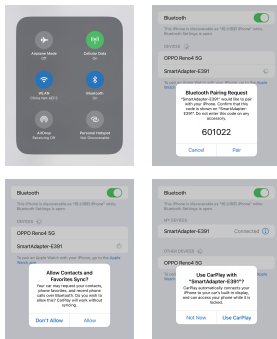


<https://www.android.com/auto/compatibility#Compatible-vehicles>

- 01 -

How to use

1. Start the car and wait for the car head until system to be loaded.
2. Connect the Wireless Carplay Android Auto Adapter to the USB-A or USB-C port in your car. please be sure plug the adapter into the port that is for wired apple CarPlay or Android Auto.
3. Open WIFI and Bluetooth on your iPhone/Android samrtphone and find the Bluetooth named "smartAdapter ****", Click on "Pair"; Click on "Allow"; Click on "Use CarPlay" or "Use Android Auto".



4. You are ready to enjoy wireless CarPlay or wireless Android Auto.

- 02 -

LED Light Description

- Cyan status: Power on indicator
- Green status:
 1. Carplay connecting (green light fast flashing)
 2. Carplay connected (green light keep on)
- Blue status:
 1. Android connecting (Blue light fast flashing)
 2. Android connected (Blue light keep on)

Please note

1. The Wireless Carplay Android Auto Adapter working principle is uses Bluetooth to establish a pairing between the iphone/ Android samrtphone and the vehicle, then switches to using WIFI to maintain the wireless connection. After the Bluetooth pairing is successful, the iPhone/Android smartphone WIFI will automatically connect to the adapter's WIFI, and then disconnect the Adapter Bluetooth connection by default for CarPlay or automatically connect to your vehicle Bluetooth by default for Android Auto.

2. Please ensure Wireless CarPlay Androind Auto Adapter power indicate light is on.

3. Please ensure that your car models supports wired CarPlay or Android Auto.

Package list

- 1x Wireless Adapter
- 1x USB Cable(Type-C to A)
- 1x USB Cable(Type-C to C)
- 1x 3M Sticker
- 1x User Manual

- 03 -

FQA

1. What is the WIFI password for the Wireless CarPlay Adapter?

We need to connect the Bluetooth, not Wi-Fi. After Bluetooth matching is successful, WIFI will automatically connect. So no need Wi-Fi password. Make sure your Wi-Fi is turned on and unoccupied when pairing.

2. After pairing Android Auto adapter, can not start Android Auto function or compatible/ can not recognize the USB...

- 1) If your car has use the Android Auto function for the first time, please use your date cable to connect your phone to activate Android Auto through a wired method.
- 2) Please make sure that Android Auto on your Android phone is the last version. If not, please log in to your google play account to update to the latest version.
- 3) Please turn off the Bluetooth of your phone and enter the mobile application management to search auto to clear the auto cache. After the cleaning is completed, Restart the adapter and reconnect to Bluetooth.

3. When use the Wireless Carplay Android Auto Adapter whether Mobile Phone can use other Internet WIFI.

When enjoying the Wireless Carplay Android Auto Adapter function, the phone's WIFI will be occupied by the adapter, So you can not use other internet at the same time, You only can use your phone SIM card internet.

- 04 -

4. Audio input or output issues : calls rejected or forwarded to voicemail/ no play sound /microphone not working/music playback interrupted or paused /voice functioning abnormally..

- 1) Please check if the iPhone/Android smartphone's Bluetooth connect to other devices such as Earphone, watch....If so, please disconnect other auto-connected Bluetooth devices or turn off the Bluetooth directly.
- 2) When on a call, check that your "Audio" output option is CarPlay or Android Auto.

5. Unable to automatically reconnect.

- 1) Please make sure that the Bluetooth and WIFI functions of your mobile phone are turned on and the Bluetooth is not occupied when you get in the car.
- 2) Clear the pairing record, restart the phone and repair the Adapter.

6. Can't find the bluetooth and WiFi of the Wireless Carplay Android Auto Adapter ?

Please make sure Wireless Carplay Android Auto Adapter power indicate light is on and be sure plug the adapter into the port that is for wired Carplay/ Android auto.

If convenient , Please test it with another Phone. If only a specific phone cannot find the Bluetooth or Wi-Fi of the adapter please try to reset the network and bluetooth.

- 05 -

7. The indicator light of the adapter is still on after the car is turned off.

The lights on the Wireless Carplay Android Auto Adapter do not turn off immediately, but take a while. Rest assured that its power consumption is minimal and will not drain the battery.

8. Can the adapter be paired with multiple phones

The adapter can be paired with maximum five phones, but only one device can be connected at a time. If you would like to pair it with a new phone, please disconnect the current phone being used. Please note, by Bluetooth function default, the adapter's system will only auto-connect back to the last used phone.

9. Whether Wireless Carplay Android Auto Adapter support Youtube Video

- 1) Can not support Youtube for wireless CarPlay.
- 2) Can support Youtube for wireless Android Auto.Please follow operation Open Google Browser and type"AAADAPK"-----Download APK-----Open"AAAD"----download"Carstream"-----Open"Carstream"go to setting and choose Enable desktop mode"after you can enjoy video from Youtube by wireless android auto Setting Video.

link: <https://www.youtube.com/watch?v=m8xHyE9zXY>



- 06 -

Online update

• The adapter works properly, it means the current version is suitable for your car. It is not recommended to update the firmware.

• Only try this solution when the problem you cannot solve from the "FQA".

1. Power up the adapter.	
2. Connect the adapter's WiFi the password is "12345678".	
3. Open web browser and enter"192.168.1.101" to enter the setting page and click" Update"for CarPlay function.	
4. For Android auto, Please Click"Switch P2P" Then Click"OK".	
5. Return to WIFI Connect, Find Wi-Fi Direct"option, Then connect the Available devices (Smart Adapter-****) (This step is for reference only for Android phone users, if use iphone update the firmware, please ignore Wi-Fi Direct step).	
6. Return to the browser's page Click "Update" (PS: the signal light of will flash when it reached 70% and it will return to normal after successful.	
7. On the same page, you could also fill in the car brand, model, years,and more details, next top "Submit to report the issue. Our engineers will record your problem and research possible solution.	

- 07 -

This device complies with Part 15 of the FCC Rules. Operation is subject to the following two conditions: (1) this device may not cause harmful interference, and (2) this device must accept any interference received, including interference that may cause undesired operation

NOTE: This equipment has been tested and found to comply with the limits for a Class B digital device, pursuant to Part 15 of the FCC Rules. These limits are designed to provide reasonable protection against harmful interference in a residential installation. This equipment generates, uses and can radiate radio frequency energy and, if not installed and used in accordance with the instructions, may cause harmful interference to radio communications. However, there is no guarantee that interference will not occur in a particular installation.

If this equipment does cause harmful interference to radio or television reception, which can be determined by turning the equipment off and on, the user is encouraged to try to correct the interference by one or more of the following measures:

- Reorient or relocate the receiving antenna.
- Increase the separation between the equipment and receiver.
- Connect the equipment into an outlet on a circuit different from that to which the receiver is connected.
- Consult the dealer or an experienced radio/TV technician for help.

Warning: changes or modifications not expressly approved by the party responsible for compliance could void the user's authority to operate the equipment

Radiation Exposure Statement

This equipment complies with FCC radiation exposure limits set forth for an uncontrolled environment.

This equipment should be installed and operated with minimum distance 20cm between the radiator and your body.

Shield 2.4GHz WIFI Functional description

1. Functional overview

This feature is designed for 2.4GHz WIFI signal reception and transmission functions on shielded devices.such as improving network security, avoiding interference, optimizing network connection performance, etc., the manufacturer permanently turn off the 2.4GHz WIFI function. Users cannot make changes at will