



FCC TEST REPORT

FCC ID:2BF6F-B10

Product	:	Mouse
Model Name	:	B10
Additional model	:	B20,B30,B40,B50
Brand	:	N/A
Report No.	:	PTC24041914801E-FC01
Prepared for		
shenzhenshiwuxianweidukejiyouxiangongsi		
loucunshequzhongtailu6haoJdong1cengguangmingquxinhujiedaoshenzhenshiguangdongsheng 518106		
Prepared by		
Precise Testing & Certification Co., Ltd.		
Building 1, No. 6, Tongxin Road, Dongcheng Street, Dongguan, Guangdong, China		



1 TEST RESULT CERTIFICATION

Applicant's name : shenzhenshiwuxianweidukejiyouxiangongsi
Address : loucunshequzhongtailu6haoJdong1cengguangmingquxinhujiedaoshenzh
518106
Manufacture's name : shenzhenshiwuxianweidukejiyouxiangongsi
Address : loucunshequzhongtailu6haoJdong1cengguangmingquxinhujiedaoshenzh
518106
Product name : Mouse
Model name : B10,B20,B30,B40,B50
Standards : FCC Part15 Subpart C, Paragraph 15.249
Test procedure : ANSI C63.10: 2013
Test Date : Apr. 23, 2024 to May. 09, 2024
Date of Issue : May. 11, 2024
Test Result : Pass

This device described above has been tested by PTC, and the test results show that the equipment under test (EUT) is in compliance with the FCC requirements. And it is applicable only to the tested sample identified in the report.

This report shall not be reproduced except in full, without the written approval of PTC, this document may be altered or revised by PTC, personal only, and shall be noted in the revision of the document.

Test Engineer:

A handwritten signature in black ink, appearing to read 'Jack Zhou'.

Jack Zhou / Engineer

Technical Manager:

A handwritten signature in black ink, appearing to read 'Simon Pu'.

Simon Pu / Manager



Contents

	Page
1 TEST RESULT CERTIFICATION	2
2 TEST SUMMARY	5
2.1 TEST SITE	6
3 GENERAL INFORMATION	7
3.1 GENERAL DESCRIPTION OF E.U.T.	7
3.2 CHANNEL LIST	8
4 EQUIPMENT DURING TEST	9
4.1 EQUIPMENTS LIST	9
4.2 MEASUREMENT UNCERTAINTY	11
4.3 DESCRIPTION OF SUPPORT UNITS	11
5 CONDUCTED EMISSION	12
5.1 E.U.T. OPERATION	12
5.2 EUT SETUP	12
5.3 TEST SET-UP (BLOCK DIAGRAM OF CONFIGURATION)	13
5.4 MEASUREMENT PROCEDURE	13
5.5 CONDUCTED EMISSION LIMIT	13
5.6 MEASUREMENT DESCRIPTION	13
5.7 CONDUCTED EMISSION TEST RESULT	13
6 RADIATED EMISSION AND BAND EDGE	14
6.1 TEST STANDARD AND LIMIT	14
6.2 TEST SETUP	15
6.3 TEST PROCEDURE	16
6.4 TEST DATA	17
7 20DB BANDWIDTH TEST	24
7.1 TEST STANDARD AND LIMIT	24
7.2 TEST SETUP	24
7.3 TEST PROCEDURE	24
7.4 TEST DATA	25
8 ANTENNA REQUIREMENT	27
8.1 TEST STANDARD AND REQUIREMENT	27



8.2 ANTENNA CONNECTED CONSTRUCTION27

9 TEST SETUP PHOTO28

10 EUT PHOTOS29



2 Test Summary

Standard Section	Test Item	Result
15.203	Antenna Requirement	PASS
15.207	Conducted Emission	N/A
15.249	Radiated Emission	PASS
15.215(c)	20dB Bandwidth	PASS
15.249(d)	Band Edge	PASS
Remark: "N/A" is an abbreviation for Not Applicable.		

Remark:N/A



2.1 Test Site

Precise Testing & Certification Co., Ltd.

Address: Building 1, No. 6, Tongxin Road, Dongcheng Street, Dongguan, Guangdong, China

FCC Registration Number: 790290

A2LA Certificate No.: 4408.01

IC Registration Number: 12191A

FCC Designation Number: CN1219



3 General Information

3.1 General Description of E.U.T.

Product Name	:	Mouse
Model Name	:	B10
Additional model	:	B20,B30,B40,B50
Model difference	:	Different product appearance color
Operation Frequency	:	2402-2480MHz
Modulation	:	GFSK
Number of Channels	:	16
Antenna installation	:	PCB antenna
Antenna Gain	:	-1.52dBi
Power supply	:	Li-ion Battery : 902030 Rated Voltage: 3.7V Rated Capacity:500mAh 1.85Wh
Hardware Version	:	BYKC-NS-MS03-6621D-CD-VO
Software Version	:	cv41av62_v02
Test sample No.	:	PTC24041914801E-1/2,PTC24041914801E-2/2.



3.2 Channel List

The EUT has been tested under its typical operating condition. Pre-defined engineering program for regulatory testing used to control the EUT for staying in continuous transmitting. Only the worst case data were reported.

The EUT has been associated with peripherals pursuant to ANSI C63.10-2013 and configuration operated in a manner tended to maximize its emission characteristics in a typical application. Frequency range investigated: radiation (9 KHz to the 10th harmonic of the highest fundamental frequency or to 40 GHz, whichever is lower).

The details of test channels and bandwidth were for RF conductive measurement.

Channel List:

Channel number	Frequency(MHz)	Channel number	Frequency(MHz)
1CH	2402	9CH	2448
2CH	2404	10CH	2450
3CH	2410	11CH	2454
4CH	2412	12CH	2464
5CH	2418	13CH	2468
6CH	2428	14CH	2470
7CH	2432	15CH	2476
8CH	2440	16CH	2480

Note:

1. Test of channel was included the lowest 2402MHz, middle 2440MHz and highest frequency 2480MHz in highest data rate and to perform the test, then record on this report.
2. EUT used the new batteries during test.



4 Equipment During Test

4.1 Equipments List

RF Conducted Test

Name of Equipment	Manufacturer	Model	Serial No.	Characteristics	Last Calibration	Calibration Interval
MXG Signal Analyzer	Agilent	N9020A	SER MY5111038	10Hz-26.5GHz	Aug.17, 2023	1 Year
Coaxial Cable	CDS	79254	46107086	10Hz-30GHz	Aug.17, 2023	1 Year
Power Meter	Anritsu	ML2495A	0949003	300MHz-40GHz	Aug.17, 2023	1 Year
Power Sensor	Anritsu	MA2411B	0917017	300MHz-40GHz	Aug.17, 2023	1 Year
Test S/W	Tonscend	JS1120-3	/	/	/	/

Remark: The temporary antenna connector is soldered on the PCB board in order to perform conducted tests and this temporary antenna connector is listed in the equipment list.

Name of Equipment	Manufacturer	Model	Serial No.	Characteristics	Last Calibration	Calibration Interval
EMI Test Receiver	Rohde&Schwarz	ESPI7	101671	9KHz-7GHz	Aug. 17,2023	1 Year
Loop Antenna	Schwarzbeck	FMZB 1519	192	9 KHz -30MHz	Aug. 17,2023	1 Year
Bilog Antenna	SCHWARZBECK	VULB9160	9160-3355	25MHz-2GHz	Aug. 17,2023	1 Year
Preamplifier (low frequency)	SCHWARZBECK	BBV 9475	9745-0013	1MHz-1GHz	Aug. 17,2023	1 Year
Cable	IMRO	AK-9515E(9m)	Cable-L	9KHz-3GHz	Aug. 17,2023	1 Year
Spectrum Analyzer	Rohde&Schwarz	FSV40	6625-01-588-5515	9KHz-40GHz	Aug. 17,2023	1 Year
Horn Antenna	SCHWARZBECK	9120D	9120D-1246	1GHz-18GHz	Aug. 17,2023	1 Year
Power Amplifier	ZHINAN	ZN3380C	15002	1GHz-26.5GHz	Aug. 17,2023	1 Year
Horn Antenna	SCHWARZBECK	BBHA 9170	9170-1066	15GHz-40GHz	Jul. 19, 2023	1 Year



Amplifier	SCHWARZBECK	BBV 9721	9721-205	18GHz-40GHz	Jul. 19, 2023	1 Year
Cable	H+S	CBL-26	N/A	1GHz-26.5GHz	Aug. 17,2023	1 Year
RF Cable	R&S	R204	R21X	1GHz-40GHz	Aug. 17,2023	1 Year
Test S/W	Tonscend	TS+	/	/	/	/

Conducted Emissions

Name of Equipment	Manufacturer	Model	Serial No.	Characteristics	Calibration Date	Calibration Interval
EMI Test Receiver	Rohde&Schwarz	ESCI	101417	9KHz-3GHz	Aug. 17, 2023	1 Year
Artificial Mains Network	Rohde&Schwarz	ENV216	102453	9KHz-300MHz	Aug. 17, 2023	1 Year
Artificial Mains Network	Rohde&Schwarz	ENV216	101342	9KHz-300MHz	Aug. 17, 2023	1 Year
Limiter	R&S	ESH3-Z2	0357.8810.54-102808-NB	0Hz-30MHz	Aug. 16,2023	1 Year
RF Switch	DIAMOND ANTENNA	CX-210	/	0.09MHz-6GHz	Mar. 22,2024	1 Year
Test S/W	Tonscend	JS32-CE	/	/	/	/



4.2 Measurement Uncertainty

Parameter	Uncertainty
RF output power, conducted	±1.0dB
Power Spectral Density, conducted	±2.2dB
Radio Frequency	± 1 x 10 ⁻⁶
Bandwidth	± 1.5 x 10 ⁻⁶
Time	±2%
Duty Cycle	±2%
Temperature	±1°C
Humidity	±5%
DC and low frequency voltages	±3%
Conducted Emissions (150kHz~30MHz)	±3.64dB
Radiated Emission(30MHz~1GHz)	±5.03dB
Radiated Emission(1GHz~25GHz)	±4.74dB
Radiated Emission(9KHz~30MHz)	±3.15dB

4.3 Description of Support Units

Equipment	Model No.	Series No.
NOTEBOOK	X230	R9PL804A

5 Conducted Emission

Test Requirement	:	FCC CFR 47 Part 15 Section 15.207
Test Method	:	ANSI C63.10: 2013
Test Result	:	PASS
Frequency Range	:	150kHz to 30MHz
Class/Severity	:	Class B

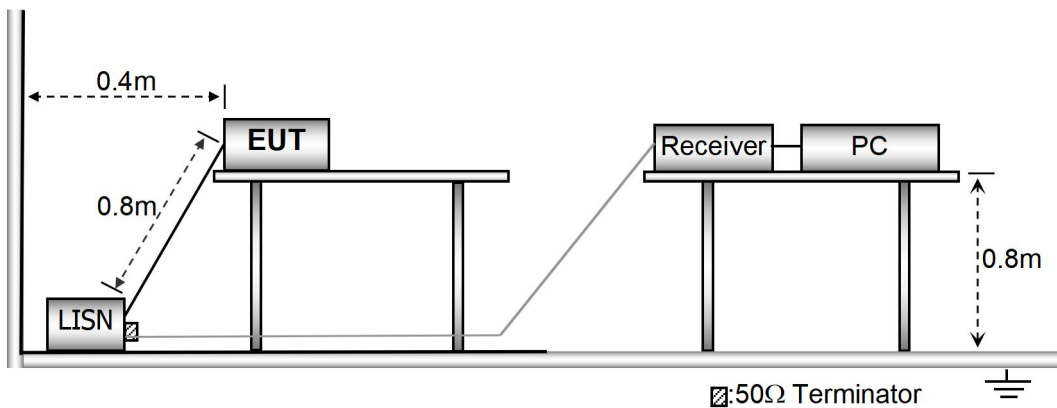
5.1 E.U.T. Operation

Operating Environment :

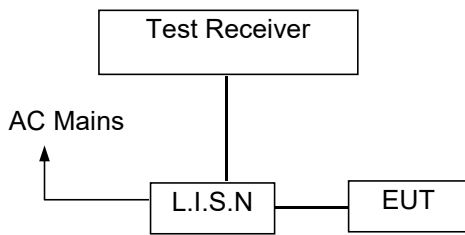
Temperature	:	25.5 °C
Humidity	:	51 % RH
Atmospheric Pressure	:	101.2kPa

5.2 EUT Setup

The conducted emission tests were performed using the setup accordance with the ANSI C63.10:2013.



5.3 Test SET-UP (Block Diagram of Configuration)



5.4 Measurement Procedure

1. The EUT was placed on a table, which is 0.8m above ground plane.
2. Maximum procedure was performed on the six highest emissions to ensure EUT compliance.
3. Repeat above procedures until all frequency measured was complete.

5.5 Conducted Emission Limit

Conducted Emission Frequency(MHz)	Quasi-peak	Average
0.15-0.5	66-56	56-46
0.5-5.0	56	46
5.0-30.0	60	50

Note:

1. The lower limit shall apply at the transition frequencies
2. The limit decreases in line with the logarithm of the frequency in the range of 0.15 to 0.50MHz.

5.6 Measurement Description

The maximised peak emissions from the EUT was scanned and measured for both the Live and Neutral Lines. Quasi-peak & average measurements were performed if peak emissions were within 6dB of the average limit line.

5.7 Conducted Emission Test Result

N/A

Not applicable for equipment operated with DC power supply.



6 Radiated Emission and Band Edge

6.1 Test Standard and Limit

Test Standard	FCC Part15 C Section 15.209 and 15.205				
Test Limit	Frequency (MHz)	Field strength (microvolt/meter)	Limit (dBuV/m)	Remark	Measurement distance (m)
	0.009MHz~0.490MHz	2400/F(kHz)	-	-	300
	0.490MHz-1.705MHz	24000/F(kHz)	-	-	30
	1.705MHz-30MHz	30	-	-	30
	30MHz~88MHz	100	40.0	Quasi-peak	3
	88MHz~216MHz	150	43.5	Quasi-peak	3
	216MHz~960MHz	200	46.0	Quasi-peak	3
	960MHz~1000MHz	500	54.0	Quasi-peak	3
	Above 1000MHz	500	54.0	Average	3
-		74.0	Peak	3	

Remark:

(1)The lower limit shall apply at the transition frequency.

(2) 15.35(b), Unless otherwise specified, the limit on peak radio frequency emissions is 20dB above the maximum permitted average emission limit applicable to the equipment under test. This peak limit applies to the total peak emission level radiated by the device.

Test Standard	FCC Part15 C Section 15.249					
Test Limit	Frequency (MHz)	Field Strength of fundamental ((millivolts /meter)	Field Strength of Harmonics (microvolts/meter)	Limit (dBuV/m)	Remark	Measurement distance (m)
	2400~2483.5	50	-	114.0	Peak	3
	2400~2483.5	50	-	94.0	Average	3
	2400~2483.5	-	500	74.0	Peak	3
	2400~2483.5	-	500	54.0	Average	3

Remark:

(1) 15.35(b), Unless otherwise specified, the limit on peak radio frequency emissions is 20dB above the maximum permitted average emission limit applicable to the equipment under test. This peak limit applies to the total peak emission level radiated by the device.

6.2 Test Setup

Figure 1. Below 30MHz

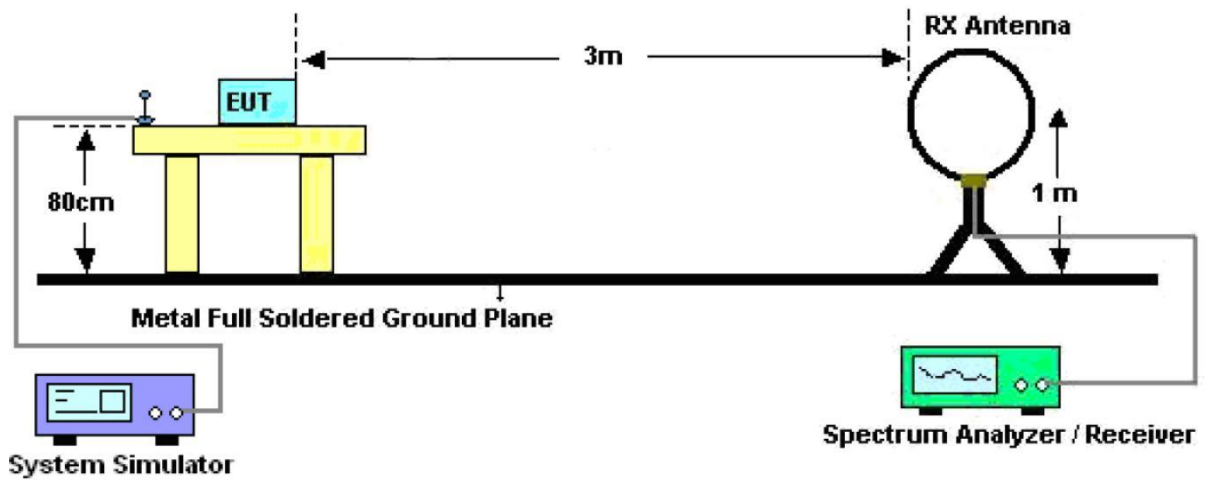


Figure 2. 30MHz to 1GHz

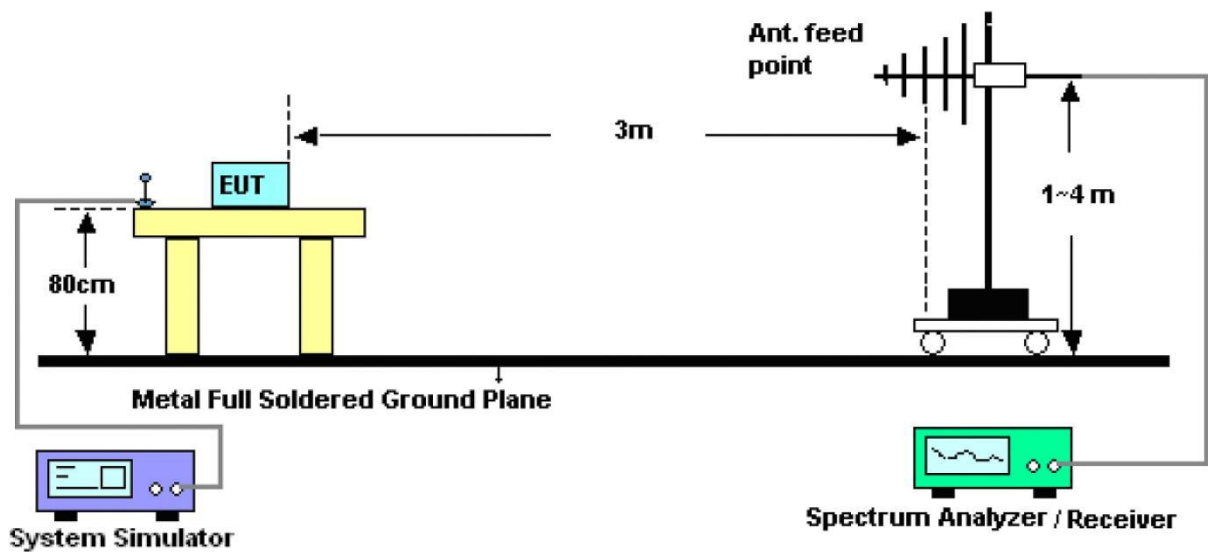
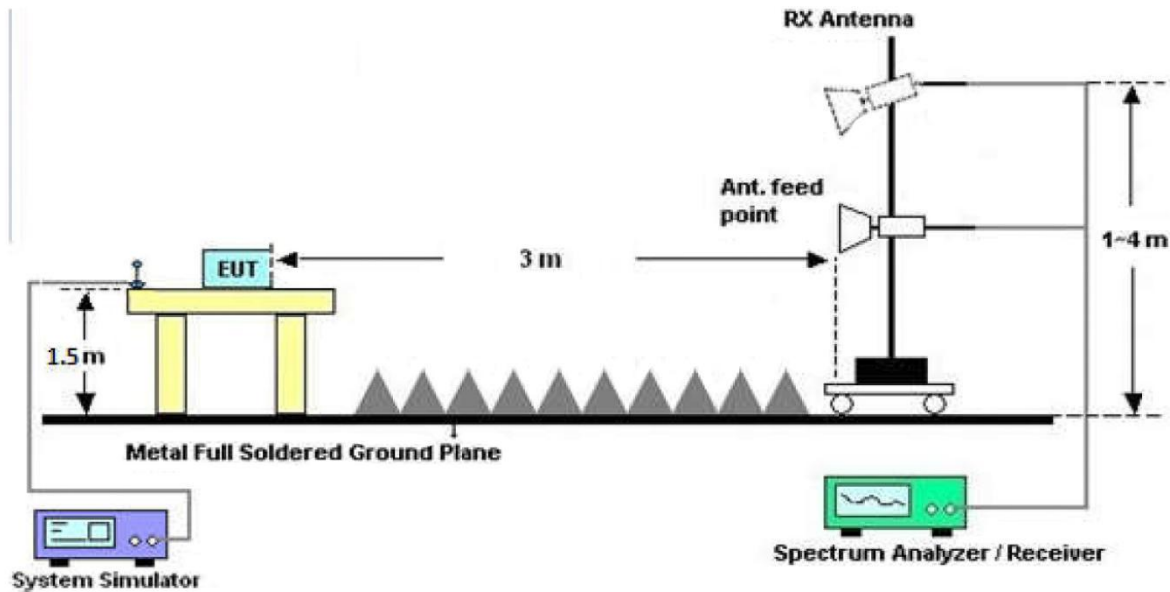


Figure 3. Above 1 GHz



6.3 Test Procedure

For below 1GHz: The EUT is placed on a turntable, which is 0.8m above the ground plane.

For above 1GHz: The EUT is placed on a turntable, which is 1.5m above the ground plane.

The turn table can rotate 360 degrees to determine the position of the maximum emission level. The EUT is set 3 meters away from the receiving antenna which is mounted on a antenna tower. The antenna can be moved up and down from 1 to 4 meters to find out the maximum emission level. Rotated the EUT through three orthogonal axes to determine the maximum emissions, both horizontal and vertical polarization of the antenna are set on test. The EUT is tested in 9*6*6 Chamber. The device is evaluated in xyz orientation.

For the radiated emission test above 1GHz:

Place the measurement antenna away from each area of the EUT determined to be a source of emissions at the specified measurement distance, while keeping the measurement antenna aimed at the source of emissions at each frequency of significant emissions, with polarization oriented for maximum response. The measurement antenna may have to be higher or lower than the EUT, depending on the radiation pattern of the emission and staying aimed at the emission source for receiving the maximum signal. The final measurement antenna elevation shall be that which maximizes the emissions. The measurement antenna elevation for maximum emissions shall be restricted to a range of heights of from 1 m to 4 m above the ground or reference ground plane.

For 9kHz to 150kHz, Set the spectrum analyzer as:

RBW = 200Hz, VBW =1kHz, Detector= Quasi-Peak, Trace mode= Max hold, Sweep- auto couple.



For 150kHz to 30MHz, Set the spectrum analyzer as:

RBW = 9KHz, VBW =30kHz, Detector= Quasi-Peak, Trace mode= Max hold, Sweep- auto couple.

For 30MHz to 1000MHz, Set the spectrum analyzer as:

RBW = 100kHz, VBW =300kHz, Detector= Quasi-Peak, Trace mode= Max hold, Sweep- auto couple.

For above 1GHz,Set the spectrum analyzer as:

RBW =1MHz, VBW =1MHz, Detector= Peak, Trace mode= Max hold, Sweep- auto couple.

RBW =1MHz, VBW =10Hz, Detector= Average, Trace mode= Max hold, Sweep- auto couple.

6.4 Test Data

PASS

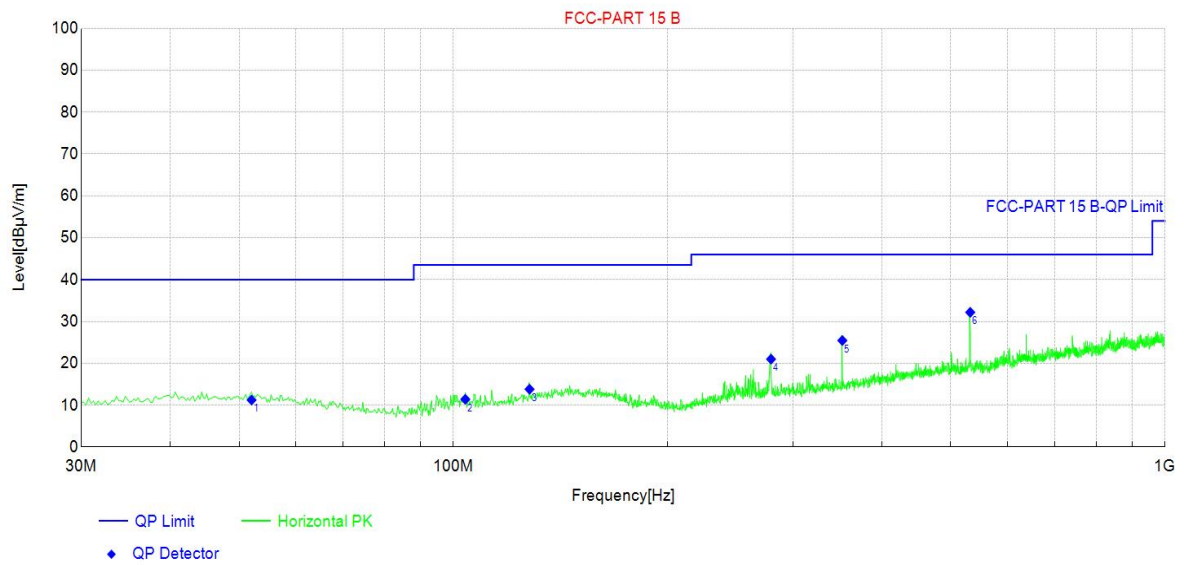
During the test, Pre-scan all kind of the place mode (X-axis, Y-axis, Z-axis), and found the X-axis is the worst case.

The test results of 9kHz-30MHz was attenuated more than 20dB below the permissible limits, so the results don't record in the report.

During the test, pre-scan all the modes, and found the Middle channel which is the worst case, only the worst case is recorded in the report



Test plot for Horizontal

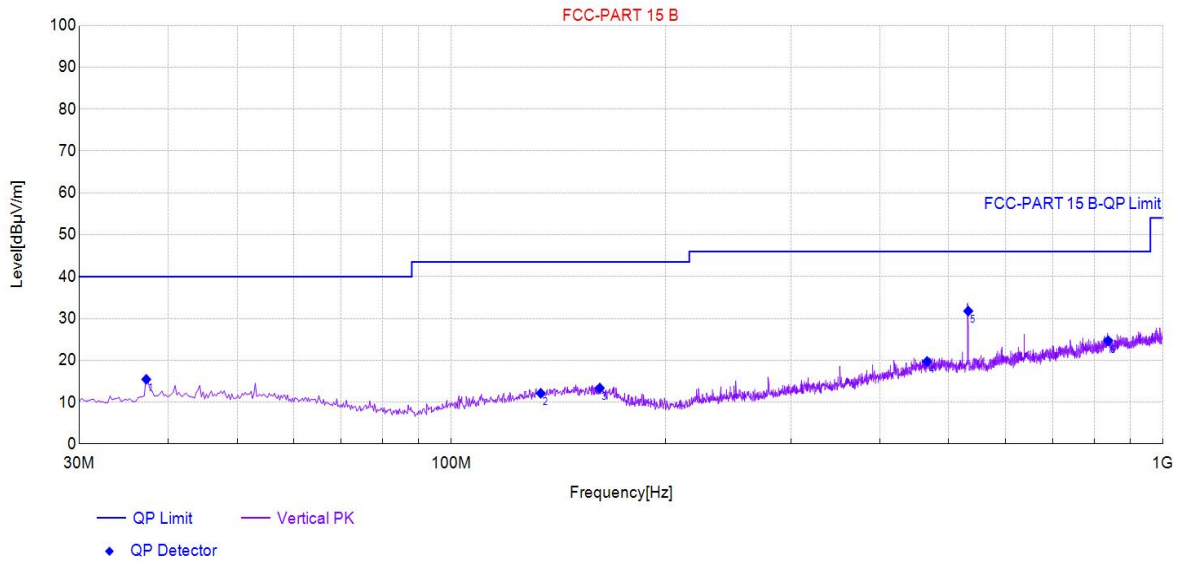


Final Data List[QP]								
NO.	Freq. [MHz]	QP Reading [dBµV]	Factor [dB/m]	QP Value [dBµV/m]	QP Limit [dBµV/m]	QP Margin [dB]	Polarity	Verdict
1	52.07	27.57	-16.32	11.25	40.00	28.75	Horizontal	PASS
2	103.96	31.11	-19.68	11.43	43.50	32.07	Horizontal	PASS
3	127.97	30.63	-16.80	13.83	43.50	29.67	Horizontal	PASS
4	279.53	36.91	-15.90	21.01	46.00	24.99	Horizontal	PASS
5	352.04	39.3	-13.84	25.46	46.00	20.54	Horizontal	PASS
6	532.46	41.44	-9.25	32.19	46.00	13.81	Horizontal	PASS

Remark: Emission Level = Reading + Cable Loss + ANT Factor - AMP Factor



Test plot for Vertical



Final Data List[QP]								
NO.	Freq. [MHz]	QP Reading [dBµV]	Factor [dB/m]	QP Value [dBµV/m]	QP Limit [dBµV/m]	QP Margin [dB]	Polarity	Verdict
1	37.28	32.7	-17.21	15.49	40.00	24.51	Vertical	PASS
2	133.55	28.43	-16.28	12.15	43.50	31.35	Vertical	PASS
3	161.68	28.8	-15.43	13.37	43.50	30.13	Vertical	PASS
4	466.02	30.74	-11.01	19.73	46.00	26.27	Vertical	PASS
5	532.46	41.03	-9.25	31.78	46.00	14.22	Vertical	PASS
6	837.28	29.32	-4.63	24.69	46.00	21.31	Vertical	PASS

Remark: Emission Level = Reading + Cable Loss + ANT Factor - AMP Factor



Test Frequency 1GHz-25GHz

Test Mode: (Low channel)									
Frequency (MHz)	Read Level (dBuV)	Antenna Factor (dB/m)	Cable Loss (dB)	Preamplifier Factor (dB)	Level (dBuV/m)	Limit (dBuV/m)	Over Limit (dB)	Pol.	Detector
2402.00	93.01	31.12	2.18	35.33	90.98	114	-23.02	V	Peak
2402.00	84.12	31.12	2.18	35.33	82.49	94	-11.51	V	AVG
4804.00	49.89	34.01	2.58	34.65	51.83	74	-22.17	V	Peak
4804.00	37.59	34.01	2.58	34.65	39.92	54	-14.08	V	AVG
7206.00	46.18	36.16	2.97	35.07	50.24	74	-23.76	V	Peak
7206.00	36.60	36.16	2.97	35.07	37.69	54	-16.31	V	AVG
2402.00	92.22	31.12	2.18	35.33	90.19	114	-23.81	H	Peak
2402.00	81.98	31.12	2.18	35.33	80.35	94	-13.65	H	AVG
4804.00	49.68	34.01	2.58	34.65	51.62	74	-22.38	H	Peak
4804.00	37.97	34.01	2.58	34.65	40.30	54	-13.70	H	AVG
7206.00	47.85	36.16	2.97	35.07	51.91	74	-22.09	H	Peak
7206.00	36.89	36.16	2.97	35.07	37.98	54	-16.02	H	AVG



Test Mode: (Middle channel)									
Frequency (MHz)	Read Level (dBuV)	Antenna Factor (dB/m)	Cable Loss (dB)	Preamp Factor (dB)	Level (dBuV/m)	Limit (dBuV/m)	Over Limit (dB)	Pol.	Detector
2440.00	94.88	31.12	2.2	34.51	93.69	114	-20.31	V	Peak
2440.00	81.40	31.22	2.2	34.51	80.31	94	-13.69	V	AVG
4880.00	48.53	34.98	2.49	34.14	51.86	74	-22.14	V	Peak
4880.00	37.60	34.98	2.49	34.14	40.93	54	-13.07	V	AVG
7320.00	46.98	36.01	3.01	34.56	51.44	74	-22.56	V	Peak
7320.00	35.98	36.01	3.01	34.56	40.44	54	-13.56	V	AVG
2440.00	93.66	31.12	2.2	34.51	92.47	114	-21.53	H	Peak
2440.00	82.51	31.12	2.2	34.51	81.32	94	-12.68	H	AVG
4880.00	48.69	34.98	2.49	34.14	52.02	74	-21.98	H	Peak
4880.00	37.07	34.98	2.49	34.14	40.40	54	-13.60	H	AVG
7320.00	46.82	36.01	3.01	34.56	51.28	74	-22.72	H	Peak
7320.00	36.95	36.01	3.01	34.56	41.41	54	-12.59	H	AVG



Test Mode: CH16(High channel)									
Frequency (MHz)	Read Level (dBuV)	Antenna Factor (dB/m)	Cable Loss (dB)	Preamp Factor (dB)	Level (dBuV/m)	Limit (dBuV/m)	Over Limit (dB)	Pol.	Detector
2480.00	95.12	31.65	2.23	36.07	92.93	114	-21.07	V	Peak
2480.00	84.23	31.65	2.23	36.07	82.04	94	-11.96	V	AVG
4960.00	49.77	35.06	2.6	34.93	52.50	74	-21.50	V	Peak
4960.00	36.04	35.06	2.6	34.93	38.77	54	-15.23	V	AVG
7440.00	46.56	36.19	3.12	35.11	50.76	74	-23.24	V	Peak
7440.00	35.05	36.19	3.12	35.11	39.25	54	-14.75	V	AVG
2480.00	95.79	31.65	2.23	36.07	93.60	114	-20.40	H	Peak
2480.00	84.13	31.65	2.23	36.07	81.94	94	-12.06	H	AVG
4960.00	48.96	35.06	2.6	34.93	51.69	74	-22.31	H	Peak
4960.00	36.32	35.06	2.6	34.93	39.05	54	-14.95	H	AVG
7440.00	47.73	36.19	3.12	35.11	51.93	74	-22.07	H	Peak
7440.00	35.64	36.19	3.12	35.11	39.84	54	-14.16	H	AVG

Note: 1. The testing has been conformed to 10*2402MHz=24020MHz. 10*2440MHz=24400MHz.

10*2480MHz=24800MHz.

- 2. All other emissions more than 30dB below the limit.
- 3. Factor = Antenna Factor + Cable Loss – Pre-amplifier.
 Emission Level = Reading + Factor
 Margin=Emission Level-Limit



Spurious Emission in Restricted Band 2310-2390MHz and 2483.5-2500MHz

Test Mode: Low Channel 2402MHz									
Frequency (MHz)	Read Level (dBuV)	Antenna Factor (dB/m)	Cable Loss (dB)	Preamp Factor (dB)	Level (dBuV/m)	Limit (dBuV/m)	Over (dB)	Polarity H/V	Test Value
2390.00	40.32	29.15	3.41	34.01	38.87	74	-35.13	H	Peak
2400.00	57.57	29.16	3.43	34.01	56.15	74	-17.85	H	Peak
2390.00	40.66	29.15	3.41	34.01	39.21	74	-34.79	V	Peak
2400.00	57.09	29.16	3.43	34.01	55.67	74	-18.33	V	Peak
2390.00	34.67	29.15	3.41	34.01	33.22	54	-20.78	H	AV
2400.00	40.15	29.16	3.43	34.01	38.73	54	-15.27	H	AV
2390.00	36.42	29.15	3.41	34.01	34.97	54	-19.03	V	AV
2400.00	44.11	29.16	3.43	34.01	42.69	54	-11.31	V	AV

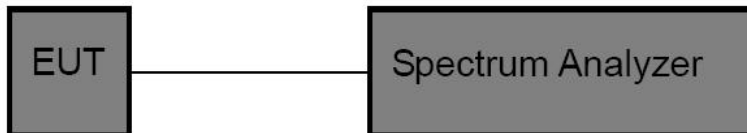
Test Mode: High Channel 2480MHz									
Frequency (MHz)	Read Level (dBuV)	Antenna Factor (dB/m)	Cable Loss (dB)	Preamp Factor (dB)	Level (dBuV/m)	Limit (dBuV/m)	Over (dB)	Polarity H/V	Test Value
2483.50	46.88	29.28	3.53	34.03	45.66	74	-28.34	H	Peak
2500.00	40.69	29.30	3.56	34.03	39.52	74	-34.48	H	Peak
2483.50	48.04	29.28	3.53	34.03	46.82	74	-27.18	V	Peak
2500.00	40.53	29.30	3.56	34.03	39.36	74	-34.64	V	Peak
2483.50	38.75	29.28	3.53	34.03	37.53	54	-16.47	H	AV
2500.00	34.28	29.30	3.56	34.03	33.11	54	-20.89	H	AV
2483.50	39.96	29.28	3.53	34.03	38.74	54	-15.26	V	AV
2500.00	33.01	29.30	3.56	34.03	31.84	54	-22.16	V	AV

7 20dB Bandwidth Test

7.1 Test Standard and Limit

Test Standard	FCC Part15 C Section 15.249
---------------	-----------------------------

7.2 Test Setup



7.3 Test Procedure

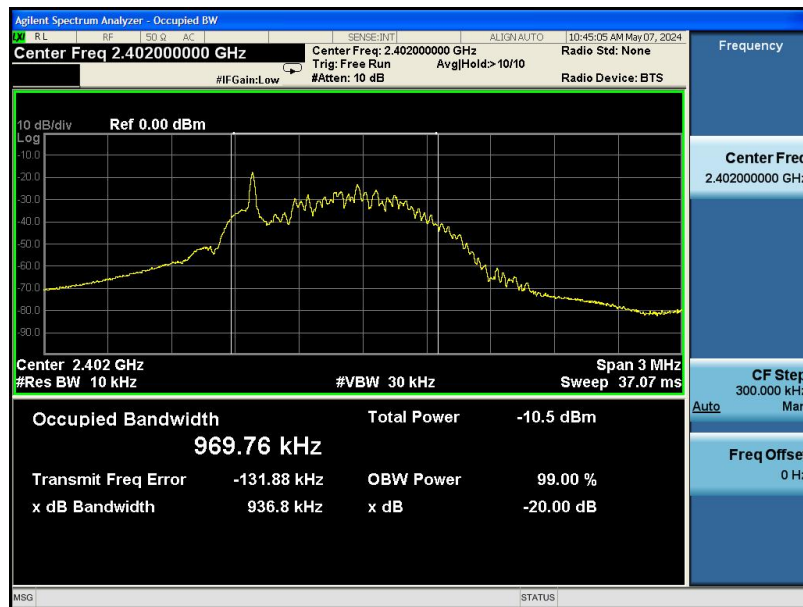
1. Place the EUT on the table and set it in the transmitting mode.
2. Remove the antenna from the EUT and then connect a low loss RF cable from the antenna port to the spectrum analyzer.
3. Set the spectrum analyzer as:
RBW = 1% to 5% of the OBW, $VBW \geq 3 \cdot RBW$,
Detector= Average
Trace mode= Max hold.
Sweep- auto couple.
4. Mark the peak frequency and -20dB (upper and lower) frequency.
5. Repeat until all the rest channels are investigated.



7.4 Test Data

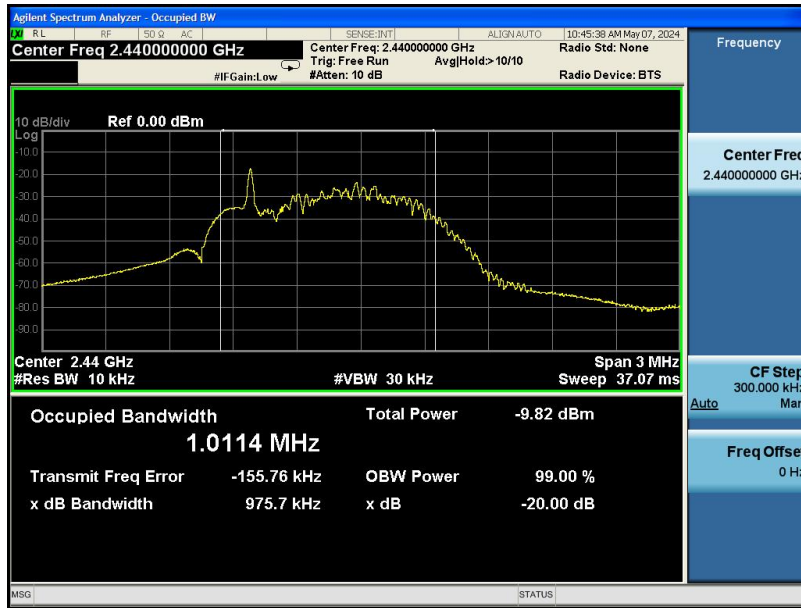
Test Item	: 20dB Bandwidth	Test Mode	: TX
Test Voltage	: DC 3.7V	Temperature	: 22.4°C
Test Result	: PASS	Humidity	: 55%RH

Frequency (MHz)	Bandwidth (kHz)	Result
2402MHZ	936.8	PASS
2440MHZ	957.7	PASS
2480MHZ	952.0	PASS





Test Mode: Low



Test Mode: Middle



Test Mode: High



8 Antenna Requirement

8.1 Test Standard and Requirement

Test Standard	FCC Part15 Section 15.203
Requirement	1) 15.203 requirement: An intentional radiator shall be designed to ensure that no antenna other than that furnished by the responsible party shall be used with the device. The use of a permanently attached antenna or of an antenna that uses a unique coupling to the intentional radiator, the manufacturer may design the unit so that a broken antenna can be replaced by the user, but the use of a standard antenna jack or electrical connector is prohibited.

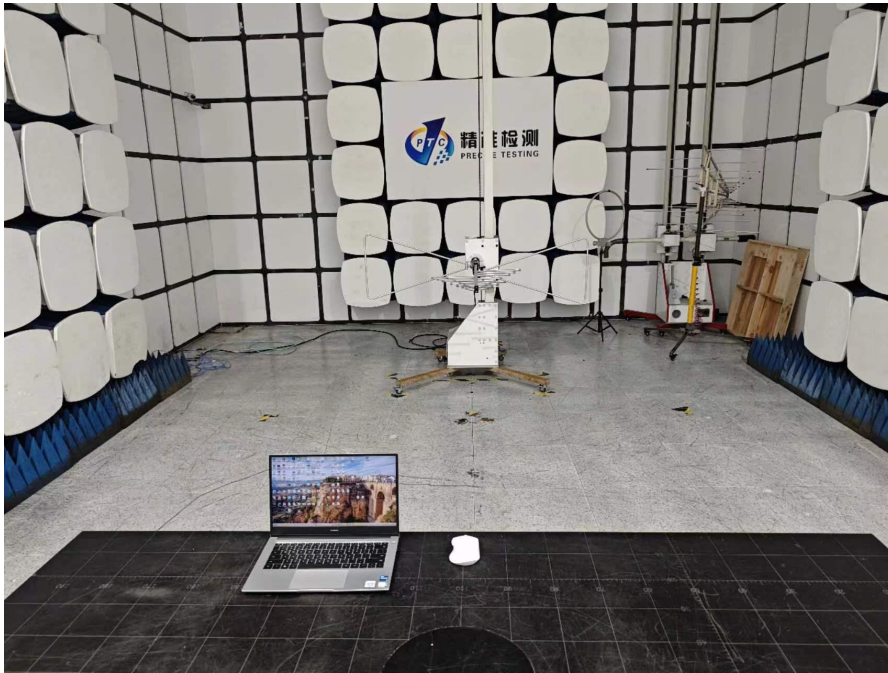
8.2 Antenna Connected Construction

The antenna is a PCB Antenna which permanently attached, and the best case gain of the antenna is -1.52 dBi. It complies with the standard requirement.

9 TEST SETUP PHOTO

RADIATED EMISSION TEST

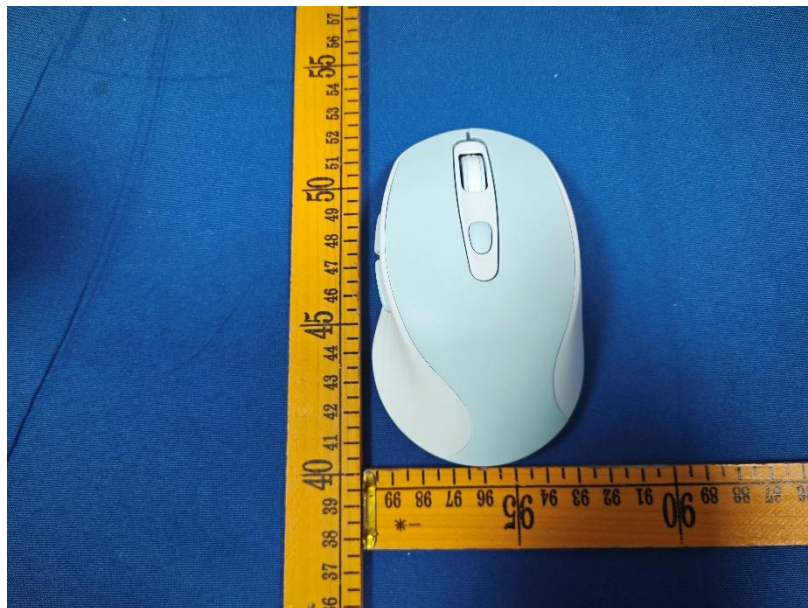
From 30MHz-1000MHz

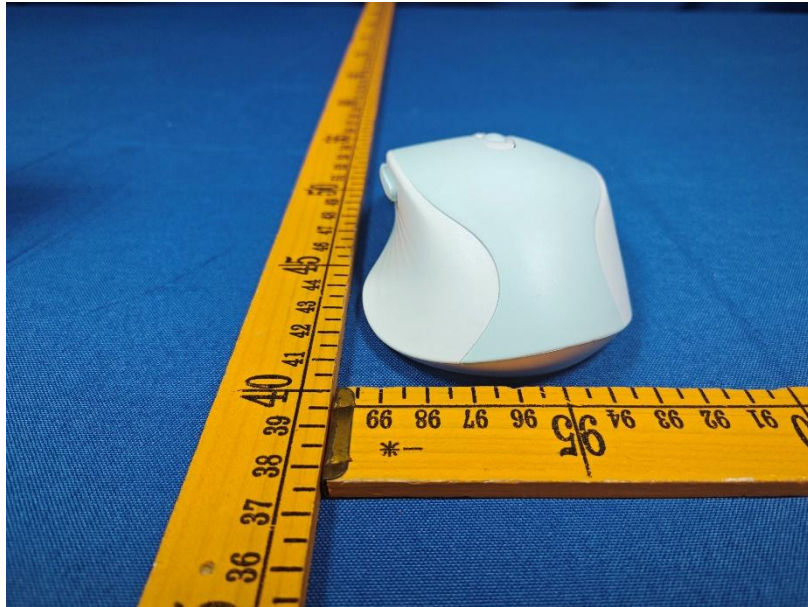


Test frequency from 1GHz



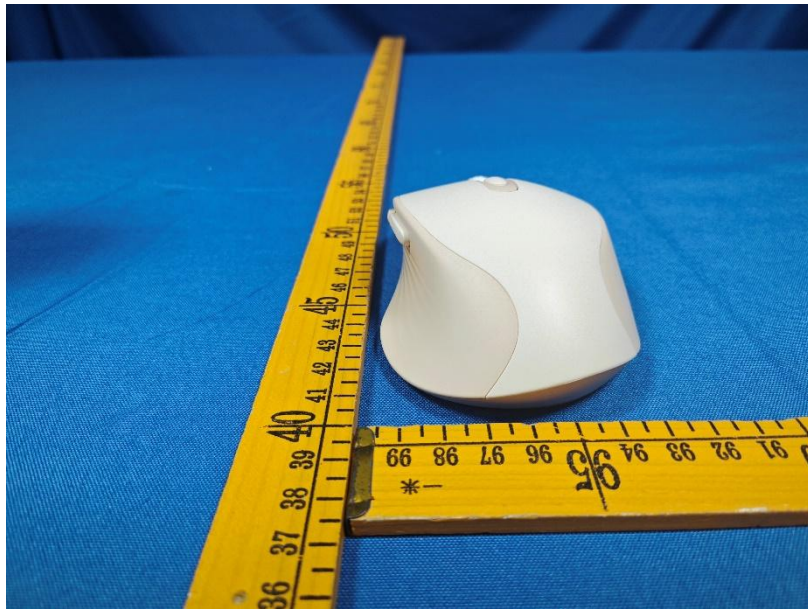
10 EUT PHOTOS





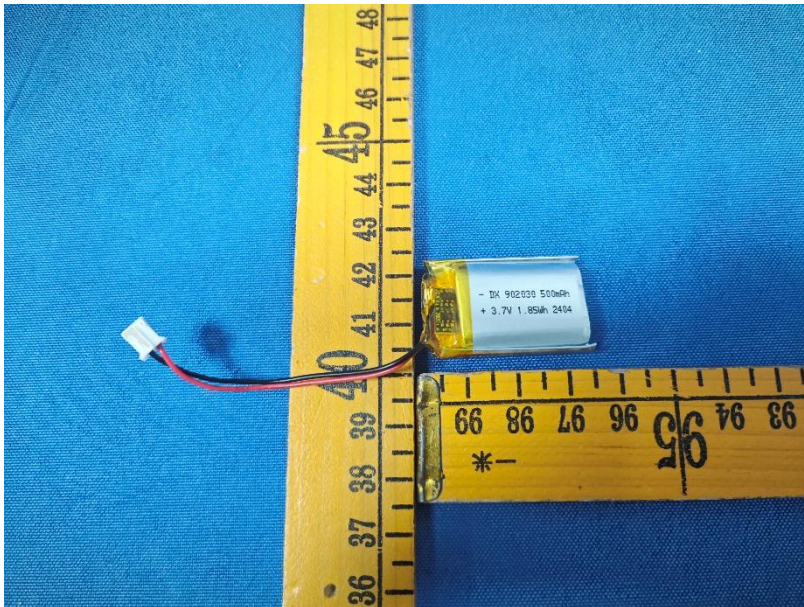
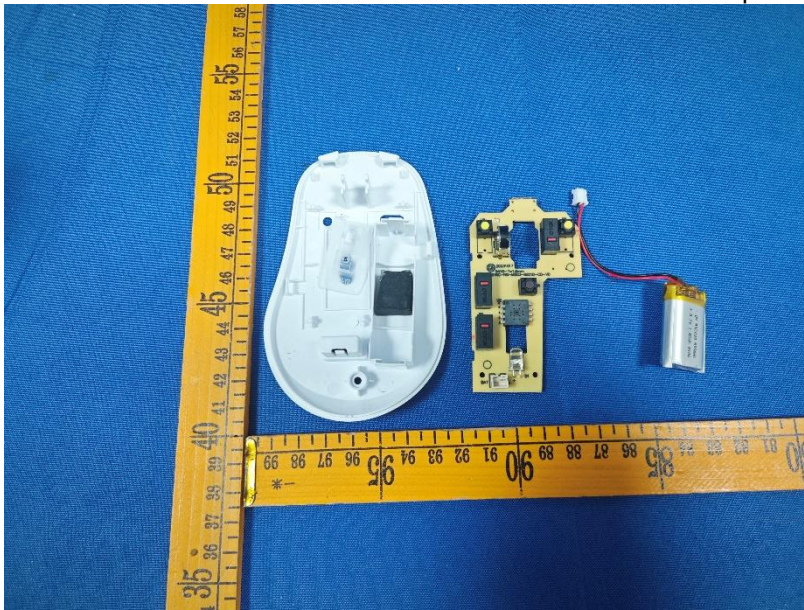


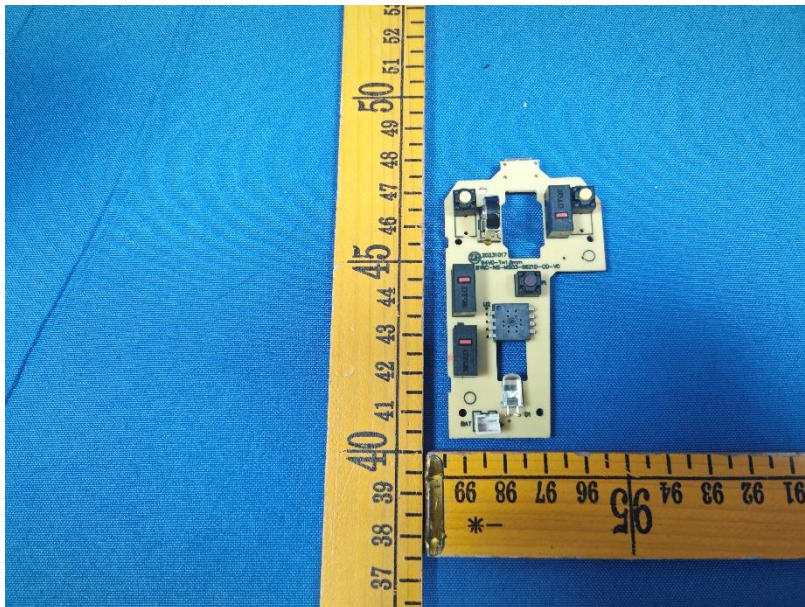
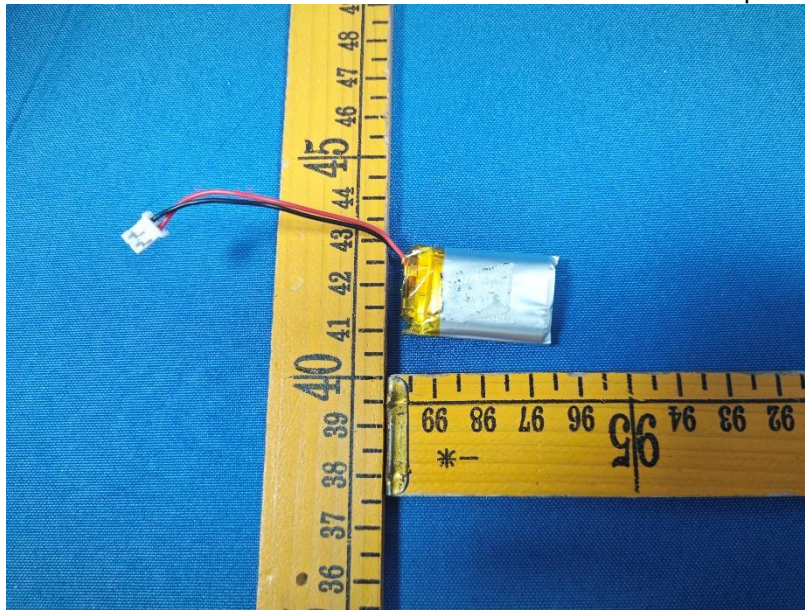


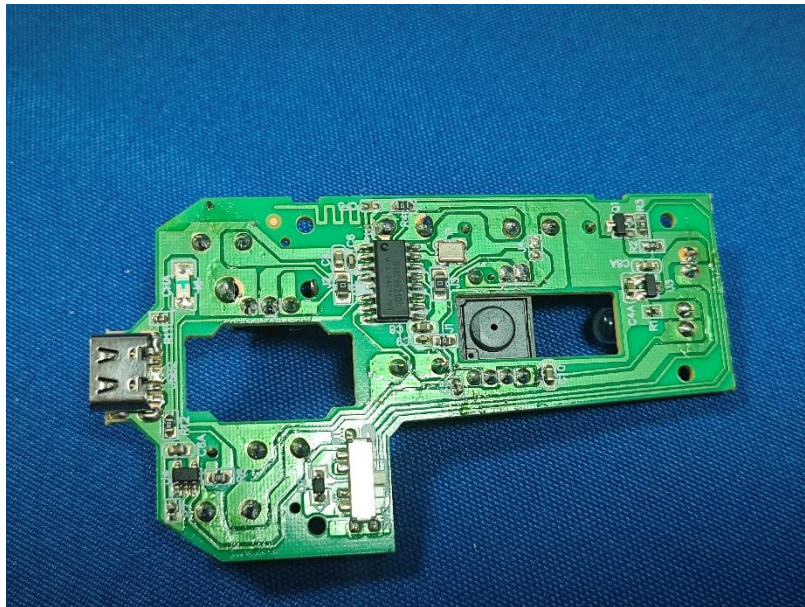
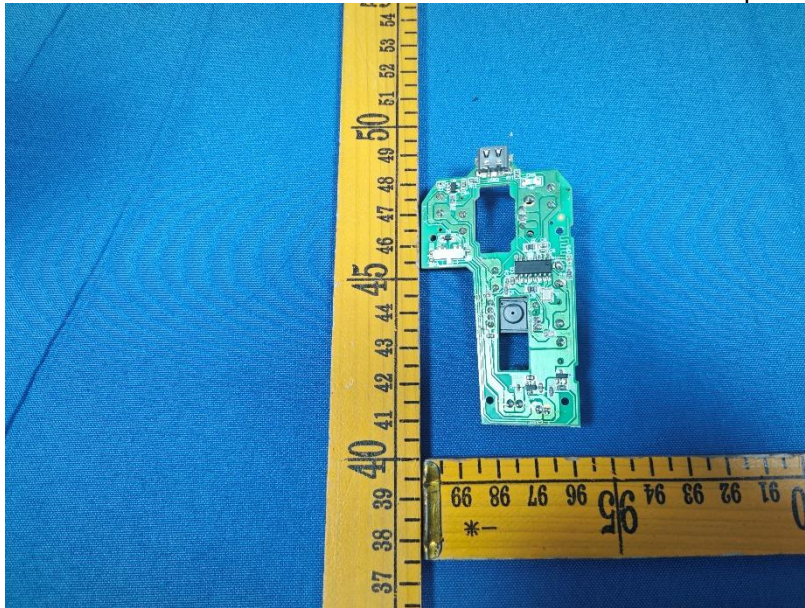


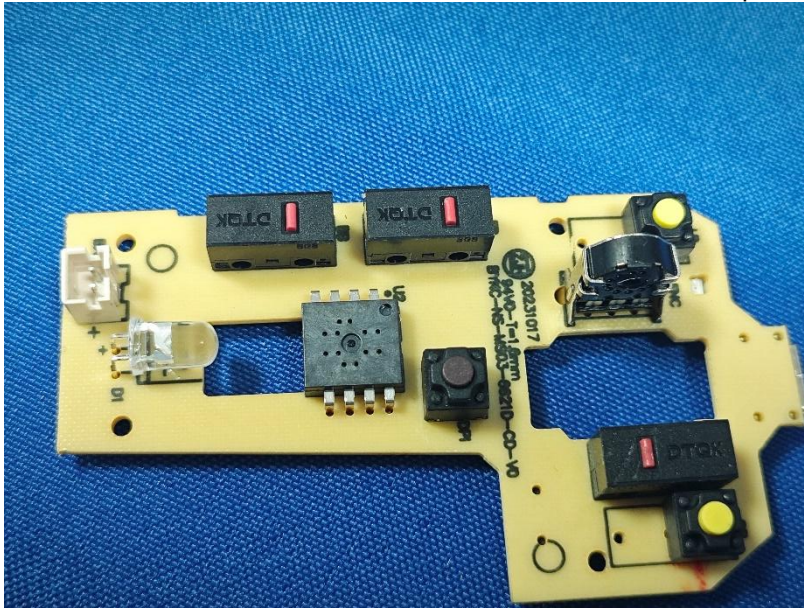












*******THE END REPORT*******