



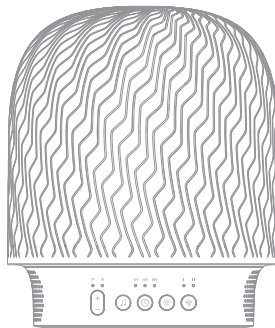
Scan the QR code to learn
more product instructions

Puzhen Life LLC

www.puzhenlife.com

Copyright ©2017. All rights reserved.

Made in China



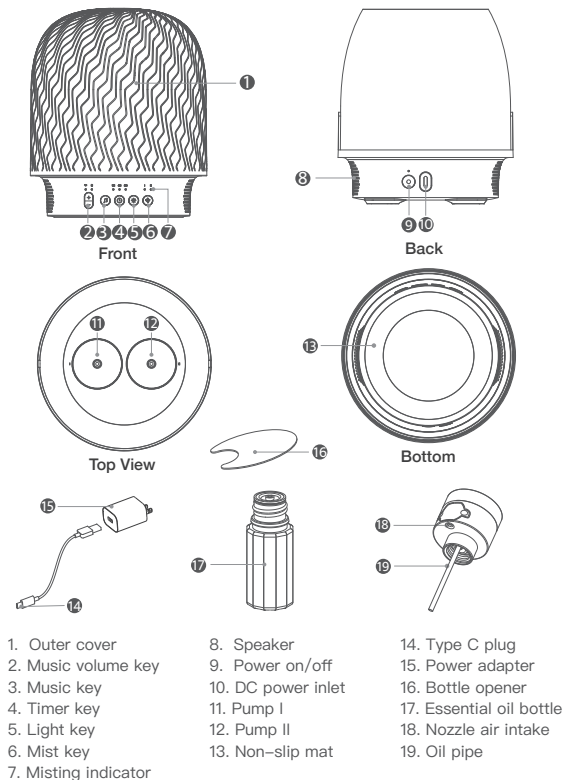
Gemini Diffuser

PZ-PA055

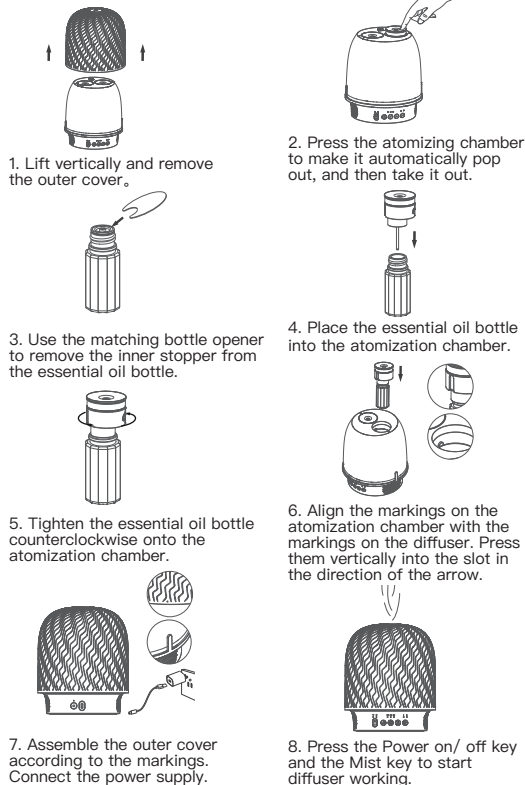
Operation Manual

Please read this user manual carefully before using this product









Diagram



Operating Instructions



Functionality

Button	Functions
	Short press to turn on the diffuser (The default setting is: 1 hour timing, 2 level of atomizing chamber I, candle light, playing built-in music). Press again to turn off the diffuser. Note: When the diffuser is running, press and hold this button for 3 seconds, the diffuser will restore factory setting. The network configuration mode will be automatically turned on. The Bluetooth and WiFi need to be reconnected.
	When playing music, short press to increase the volume by one level. Long press to increase the volume continuously.
	When playing music, short press to decrease the volume by one level. Long press to decrease the volume continuously.
	When the diffuser is running, short press to set the running time: 1 hour, 4 hours, and 8 hours.
	Short press to turn on the Bluetooth music mode. Press again to turn off the music. Press again to turn on the built-in music mode.
	When the diffuser is running, short press to change the light colors one by one: candle light, light blue, yellow, light purple, dark purple, warm white, gradient color.
	When the device is running: Press this button to select which atomization chamber to emit fog; The order is: "I" atomization chamber produces fog, "II" atomization chamber closes; "I" atomization chamber is closed, "II" atomization chamber emits fog; "I" atomization chamber emits fog, "II" atomization chamber emits fog; "I" atomization chamber is closed, "II" atomization chamber is closed;
	Plug the Type C cable into the DC power inlet. The orange indicator means charging. The white indicator means the battery is full charged. If this indicator does not light up, it means improper connection.

Connect to App

1. Scan the QR code below. Download and install the Puzhen Life App.
2. Or search for "Puzhen" in the App store. Download and install the Puzhen Life App.
3. Access the App and add the device according to the prompts of the App.

Note APP download address: <https://app.puzhen.link/#/download>



To add a device

1. Access the App, complete the registration and log in.
 2. Click "Add Device".
- Step 1: Connect the device with power.
- Step 2: Turn on the device. Long press the power on/off button to enter the network configuration mode.
- Step 3: After the network is successfully configured, you can use the App to operate various functions.

Safety and Care Instructions

Please read and follow these safety guidelines closely to ensure safe operation of the diffuser.

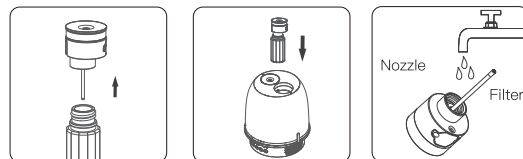
1. Unplug the diffuser immediately and discontinue use in the event of smoke or burning smell.
2. Never wrap the adapter/diffuser with cloth, paper, etc. Such actions may result in damage to the diffuser or fire.
3. Never touch the adapter/USB cable with wet hands as electric shock or injury may occur.

4. Do not disassemble or attempt to repair the diffuser, this will void the warranty.
5. Never immerse the diffuser in water.
6. Unplug the adapter when refilling, cleaning, or moving the diffuser.
7. Keep the diffuser out of reach of children.
8. Do not disassemble the nozzle during operation.
9. Do not put your fingers on the spray nozzle during operation to avoid injury.
10. Do not place acidic or alkaline chemicals in the spray nozzle.
11. Use only a 5V 2A power adapter that meets safety standards.
12. Do not shake the diffuser.
13. Do not use metal objects to clean the nozzle. Use only a cotton swab or cloth dipped in rubbing alcohol or a neutral detergent.
14. Never use the product for purposes other than those listed in this manual.
15. If the unit will not be used for an extended period or needs to be relocated, unplug the power adapter, take out the essential oil bottle, and wipe the nozzle clean before storage.
16. Clean the nozzle before switching to different essential oils.
17. The product is designed for using 100% pure, natural essential oil. Chemical fragrance, spice or impure essential oil used may cause product damage.
18. Do not move the product during its operation. Pull the power adapter instead of the wire to unplug.
19. Do not place the product in direct sunlight or close to a refrigerator, a fan or other hot environment.
20. Place the device on a flat and solid surface instead of uneven and/or unstable ones like carpets or rugs etc.

Cleaning and Maintenance

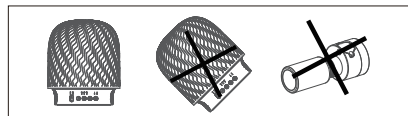
In order to avoid cross-flavors of different essential oils, it is highly recommended to use separate nozzles for only a single essential oil. Spare nozzles are available for purchase.

It is recommended to clean the nozzle with alcohol weekly, according to the instructions below:



1. Remove the atomization chamber from the diffuser and unscrew the essential oil bottle clockwise.
2. Replace the essential oil bottle with a bottle filled with 75% alcohol. Put it back into the atomization chamber and load it into the diffuser.
3. Set 1 hour timing to clean.
4. Then unscrew the nozzles off again. Rinse the nozzles from bottom. Pull out and rinse the filter. Use dry cloth to wipe them clean.

P.S. The two included empty bottles are meant to be cleaned with alcohol.



Please do not tip or tilt the diffuser or the atomizing chamber containing the essential oil bottles, as this will cause the essential oil to leak into the diffuser and damage the diffuser.

Troubleshooting

Issue	Possible Cause	Solution
The diffuser does not turn on.	The battery is low.	Connect the charger to charge, confirm whether the charging indicator light is on, and then try again later.
The working indicator is normal, and the nozzle has air flow, but there is no spray or the spray is abnormal	1. The pump is not properly and securely inserted. 2. The oil bottle is empty or lower than the end of the oil pipe. 3. The oil pipe is not securely attached to the pump.	1.Remove the pump from the diffuser. Realign the markings and press down to secure the pump. 2.Add more essential oil or change out the bottle. 3.Remove and reinsert the oil pipe into the pump.
The working indicator is normal, and no air flow from the nozzle.	The machine is in a stopped state for intermittent working mode.	Wait for the stop state to end, or reset the working time to determine whether it is in the stop state for intermittent working.
Oil is leaking from the pump.	1.The atomization chamber and the essential oil bottle are placed at an inclined position. 2.The essential oil bottle is not tightened. 3.The sealing ring of the essential oil bottle is lost.	1. Essential oil bottles should not be placed on an inclined or flat lying down. 2. Tighten the essential oil bottle 3. Check whether the seal ring of the essential oil bottle is normal.
The misting is small.	There is grease in the atomization chamber and atomization nozzle.	Clean the atomizer chamber and atomizer nozzle according to "Cleaning and Maintenance".
Weak Bluetooth signal	Is there some obstacles between the phone and the diffuser? Is it too far away?	1. Stay away from obstacles 2. Get close to your phone
Bluetooth doesn't connect	Did it already connect to another phone?	1. Disconnect the Bluetooth with the mobile phone. 2. Press and hold the power on/off button for 3 seconds to disconnect the Bluetooth connection.
WiFi doesn't connect	1. The device has been bound to another account. 2. The network is abnormal.	1. Reset the device. 2. Check the network.

Specifications

Product Name: Gemini Diffuser

Diffuser Item No: PZ-PA055

Dimensions: Φ x H=143.5mm x 170mm

Material: Metal、ABS、PP

Weight: 1.4kg

Power source: DC 5V 2A

Power: 10W

Essential: 15ml premium essential oil

Coverage area: 600 sq feet

Diffusion run time: 1-12Hchoose

Environment: Indoor

FCC ID: 2BF67-PZPA055

This appliance can be used by children aged from 8 years and above and persons with reduced physical, sensory or mental capabilities or lack of experience and knowledge if they have been given supervision or instruction concerning use of the appliance in a safe way and understand the hazards involved. Children shall not play with the appliance. Cleaning and user maintenance shall not be made by children without supervision.

This appliance is not intended for use by persons (including children) with reduced physical, sensory or mental capabilities, or lack of experience and knowledge, unless they have been given supervision or instruction concerning use of the appliance by a person responsible for their safety. Children should be supervised to ensure that they do not play with the appliance.

Note: This equipment has been tested and found to comply with the limits for a Class B digital device, pursuant to part 15 of the FCC Rules. These limits are designed to provide reasonable protection against harmful interference in a residential installation. This equipment generates, uses and can radiate radio frequency energy and, if not installed and used in accordance with the instructions, may cause harmful interference to radio communications. However, there is no guarantee that interference will not occur in a particular installation. If this equipment does cause harmful interference to radio or television reception, which can be determined by turning the equipment off and on, the user is encouraged to try to correct the interference by one or more of the following measures:

- Reorient or relocate the receiving antenna.
- Increase the separation between the equipment and receiver.
- Connect the equipment into an outlet on a circuit different from that to which the receiver is connected.
- Consult the dealer or an experienced radio/TV technician for help.

Modification: Any changes or modifications not expressly approved by the grantee of this device could void the user's authority to operate the device.

This device contains licence-exempt transmitter(s)/receiver(s) that comply with Innovation, Science and Economic Development Canada's licence-exempt RSS(s). Operation is subject to the following two conditions:

- (1) This device may not cause interference.
- (2) This device must accept any interference, including interference that may cause undesired operation of the device.

FCC& IC Radiation Exposure Statement:

This equipment complies with FCC and Canada radiation exposure limits set forth for an uncontrolled environment. This equipment should be installed and operated with a minimum distance of 20cm between the radiator and your body. This transmitter must not be co-located or operating in conjunction with any other antenna or transmitter.

Déclaration d'IC sur l'exposition aux radiations:

Cet équipement est conforme aux limites d'exposition aux radiations définies par le Canada pour des environnements non contrôlés. Cet équipement doit être installé et utilisé à une distance minimum de 20 cm entre l'antenne et votre corps. Cet émetteur ne doit pas être installé au même endroit ni utilisé avec une autre antenne ou un autre émetteur.

Manufacturer:

Puzhen Life Co., Ltd.

www.puzhenlife.com

420 E Main St, 2nd Fl, Middletown, NY10940

Orion Diffuser

PZ-PA055 DC 5V 2A