

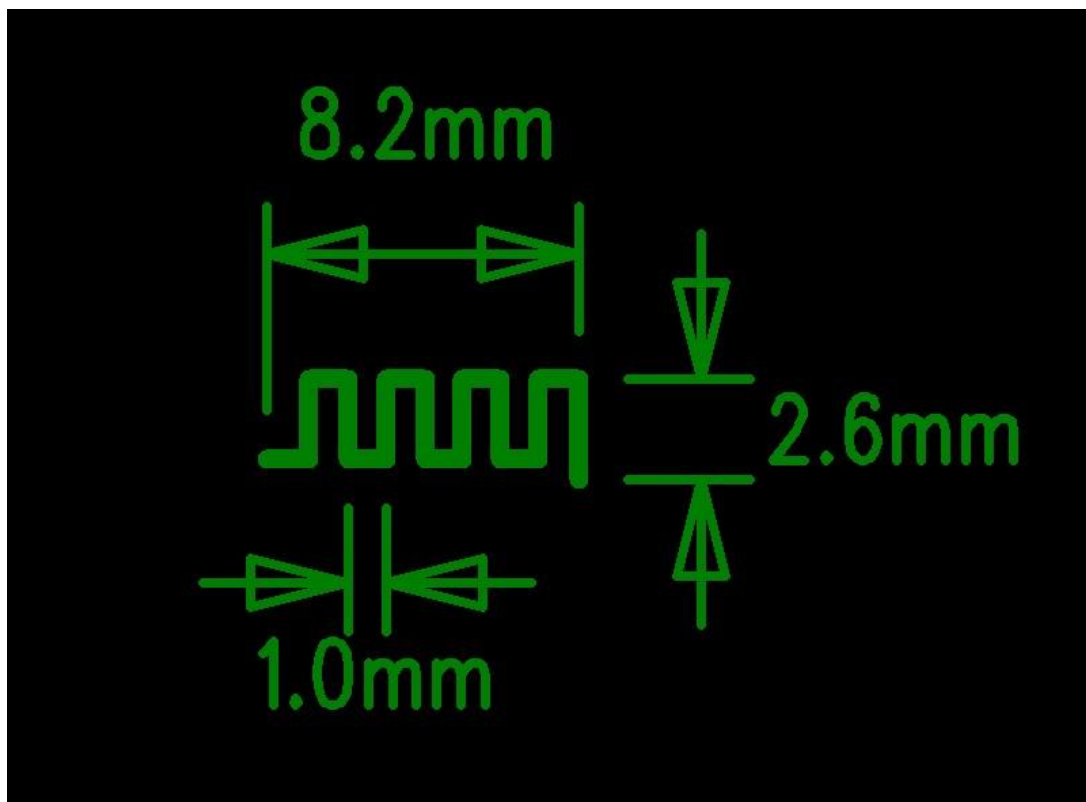
Antenna Performance Test Specifications

Applications

※Bluetooth Home RF

※ISM band 2.4GHz applications

1. Dimensions



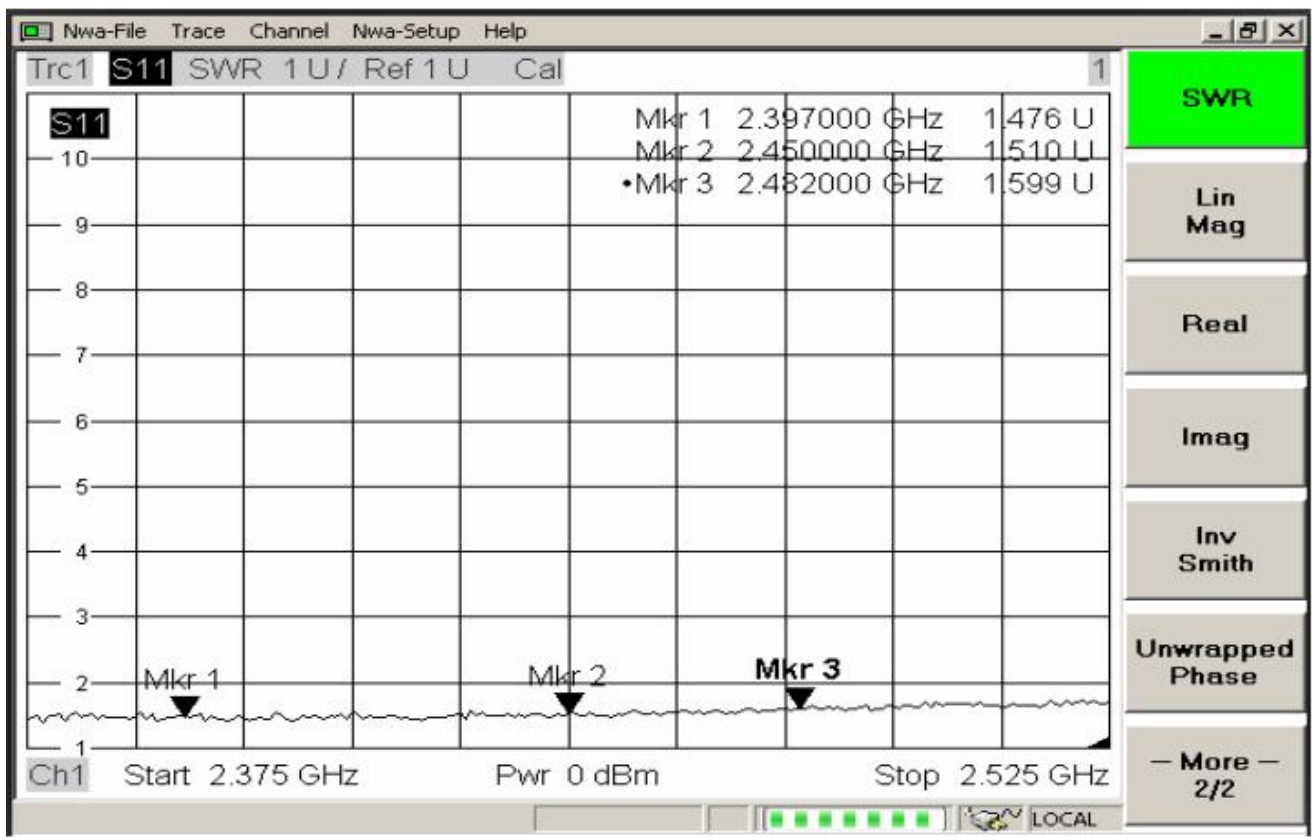
2. Specifications

number	Item	Specifications
1	Working Central Frequency	2441 MHz
2	Band Width	(2402-2480)MHz
3	Gain	5dBi
4	VSWR	≤ 2.0
5	Antenna type	PCB antenna
6	Azimuth Beam width	Omni - directional
7	Impedance	50ohm
8	Modulation mode	GFSK

3. Instrument test, software simulation parameters

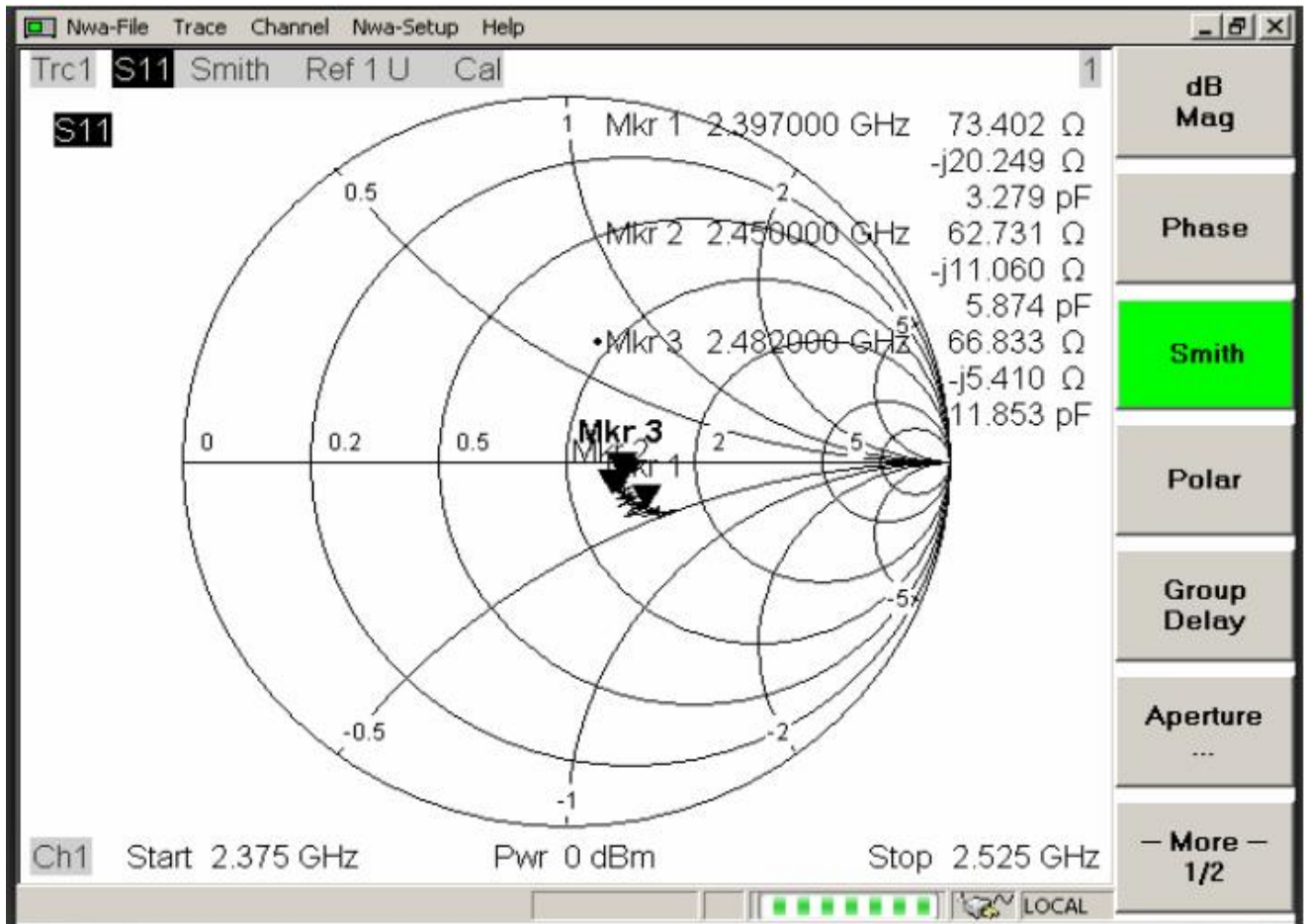
① VSWR

Mkr1: 2397MHz 1.47 Mkr2: 2450MHz 1.51 Mkr3: 2482 MHz 1.59



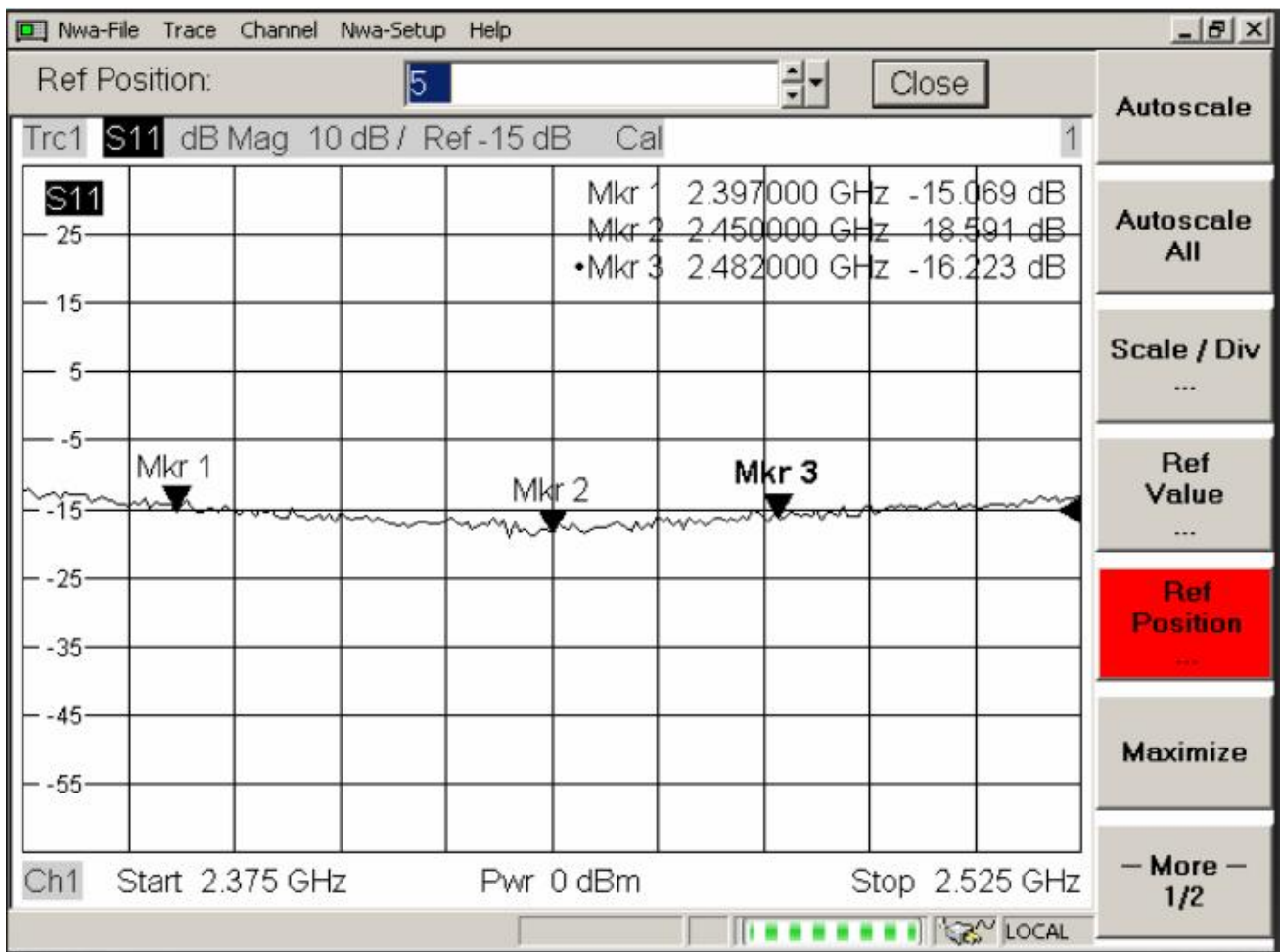
②Smith Char

Mkr1: 2397MHz 73.4 Mkr2: 2450MHz 62.7 Mkr3: 2482MHz 66.8



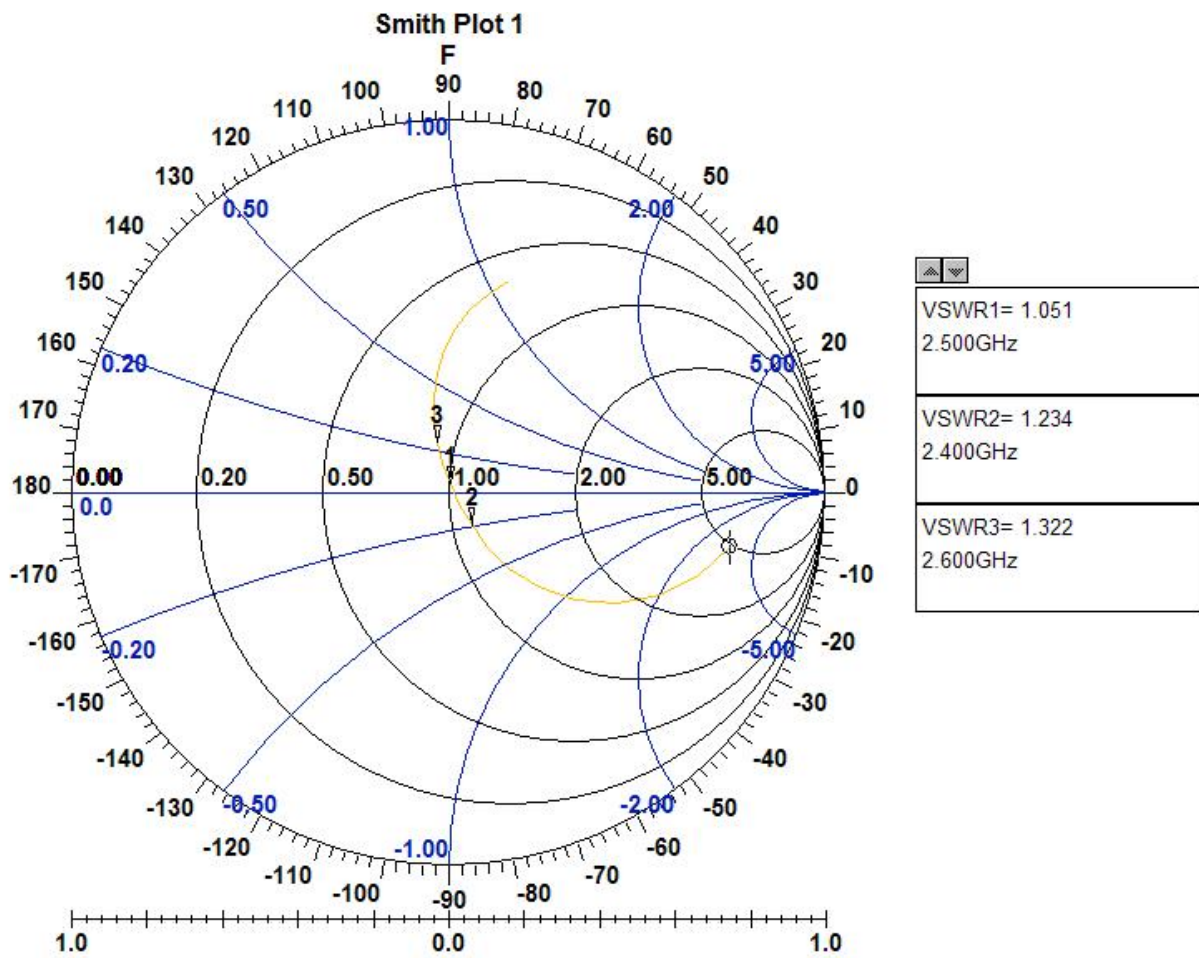
③Return Loss

Mkr1: 2397MHz -15 Mkr2: 2450MHz -18 Mkr3: 2482 MHz -16



④Smith Char simulation

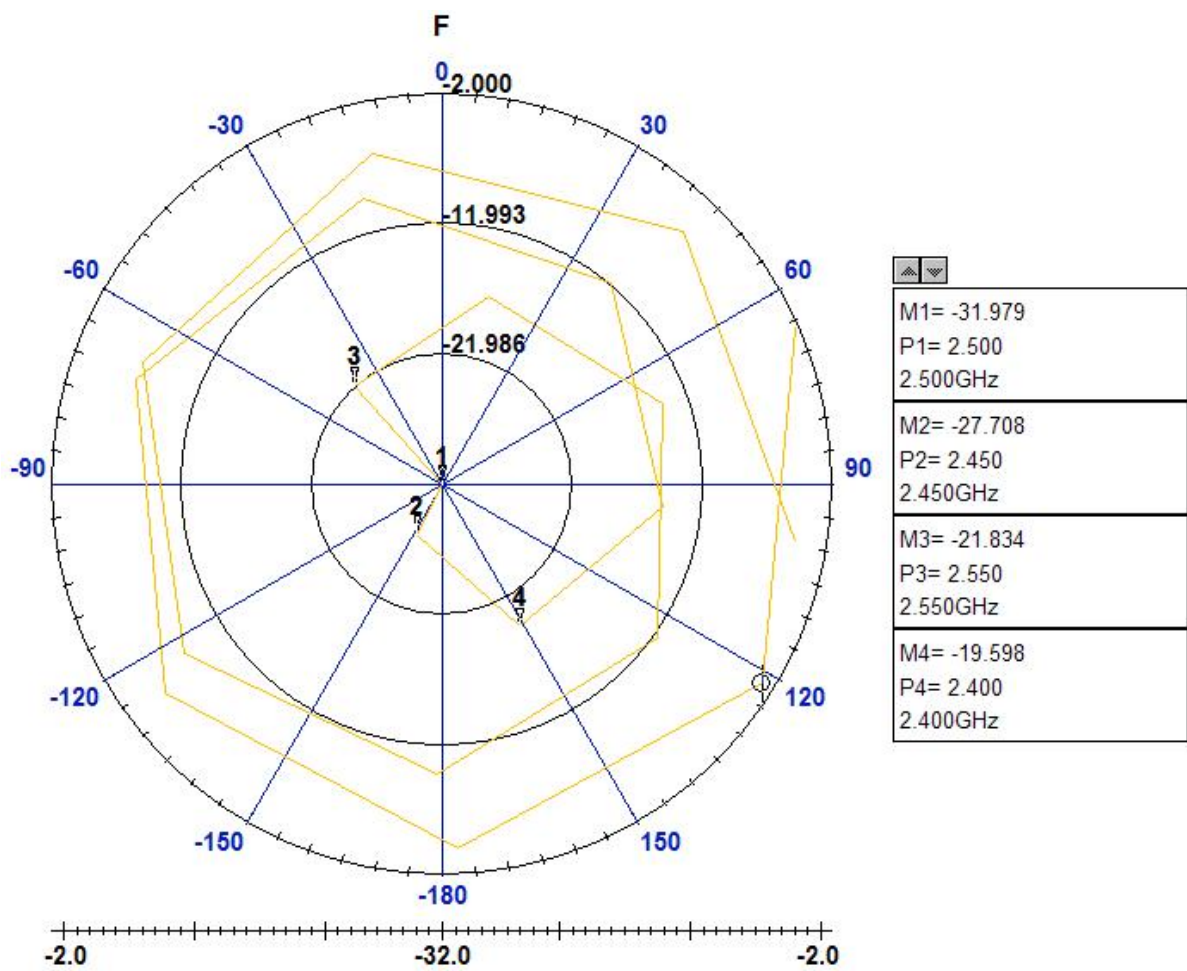
Mkr1: 2400MHz 1.234 Mkr2: 2500MHz 1.051 Mkr3: 2600MHz 1.322



⑤Return Loss simulation

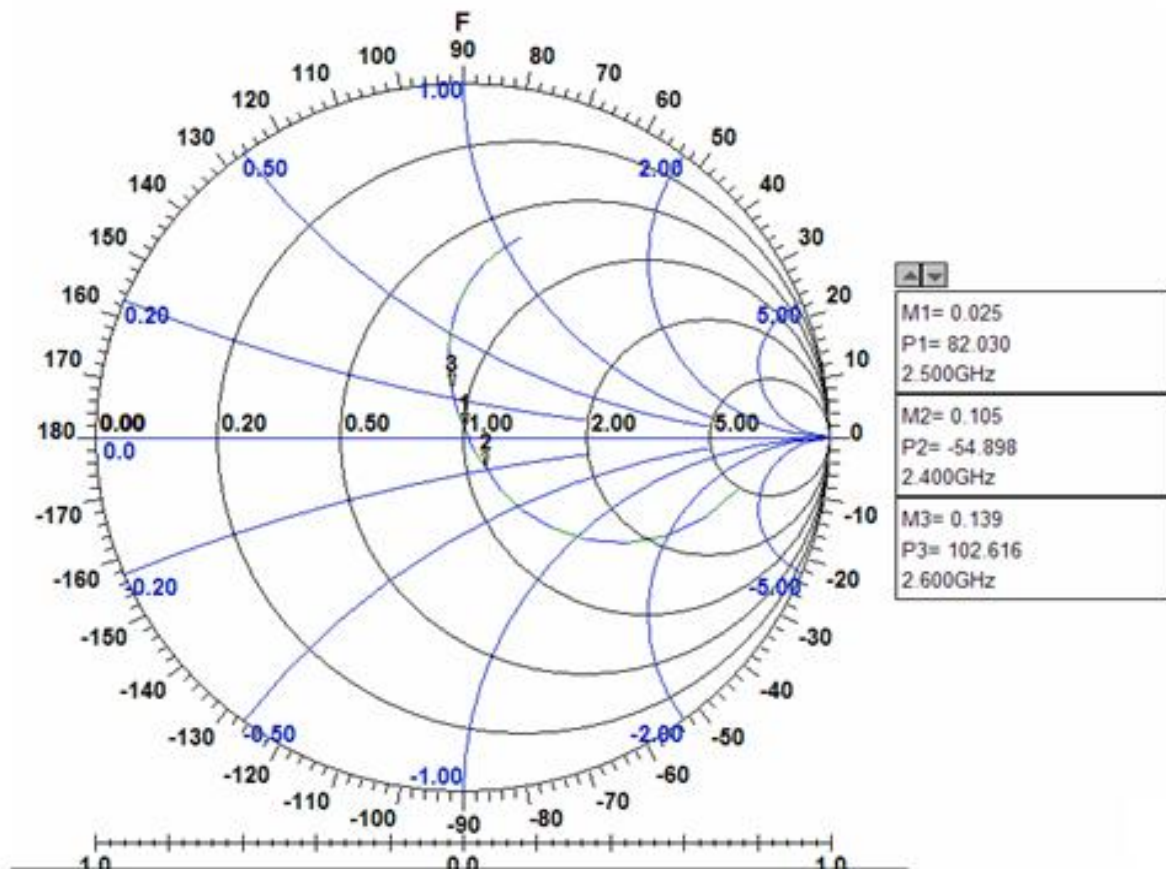
Mkr1: 2400MHz -19.59 Mkr2: 2450MHz -27.70 Mkr3: 2500MHz -31.97

Mkr4: 2550MHz -21.83



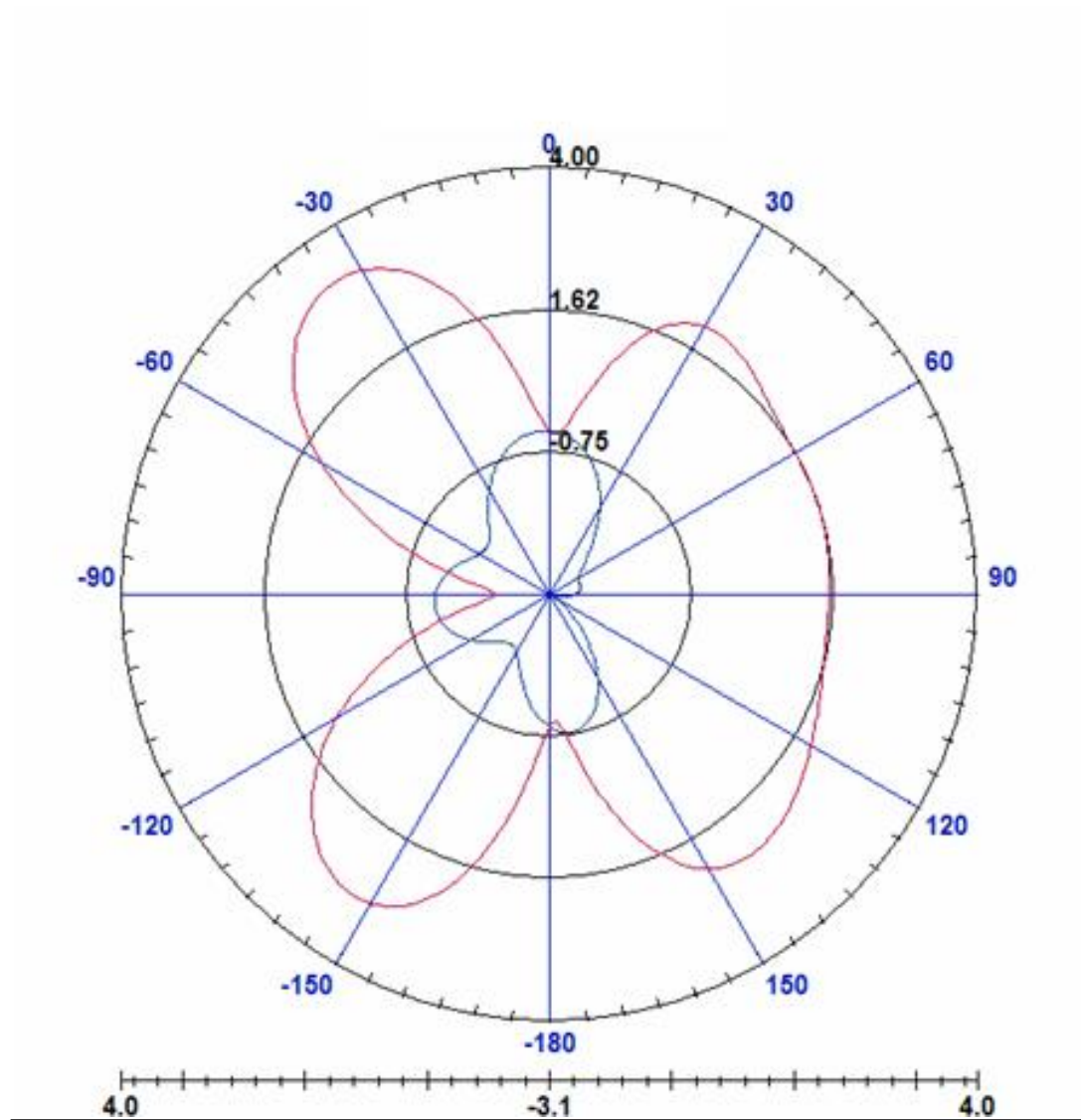
⑥Phase simulation

Mkr1: 2400MHz -54.89 Mkr2: 2500MHz -82.03 Mkr3: 2600MHz -102.6

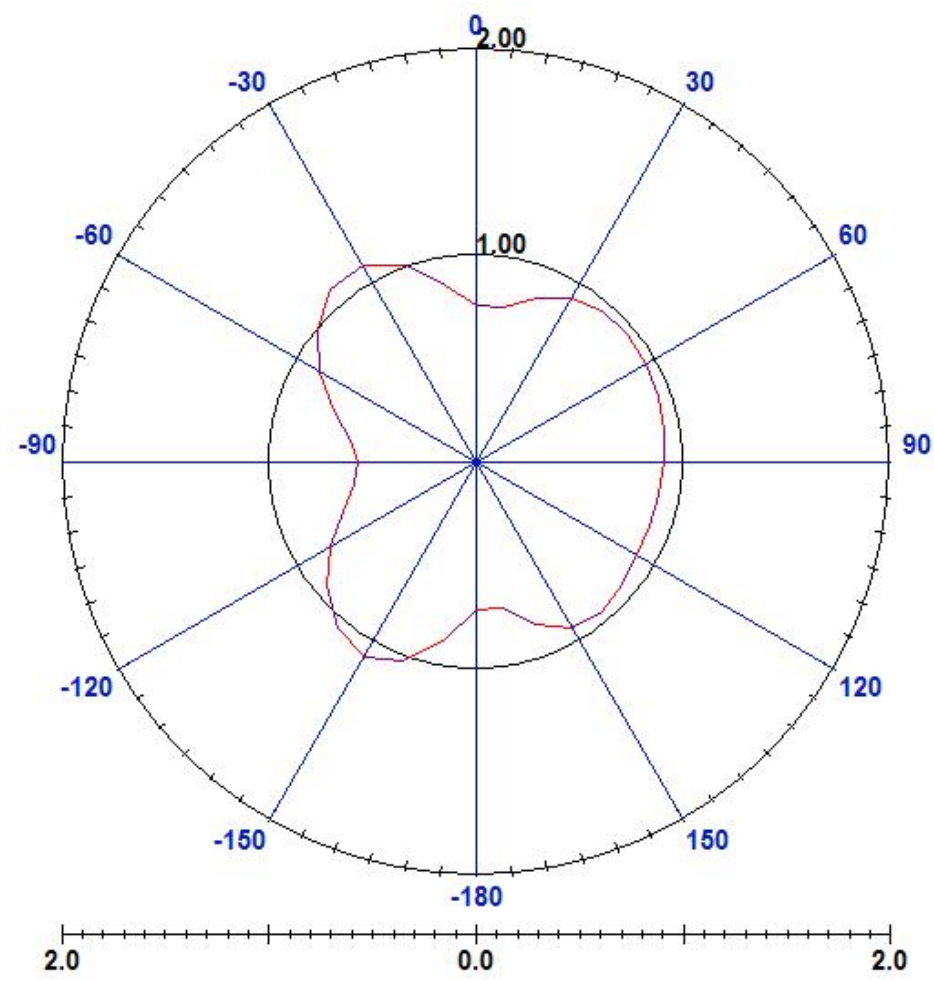


4. Radiation Patterns

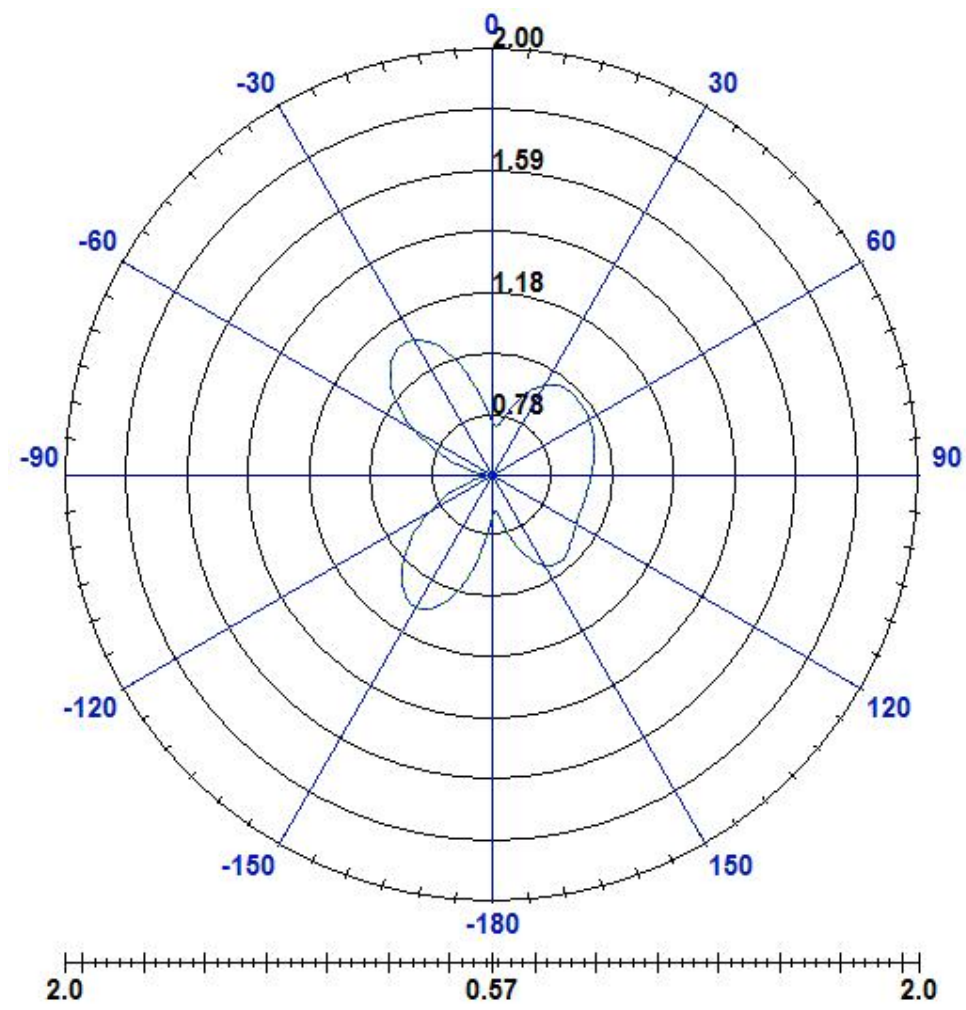
XY-plane



XZ-plane



YZ-plane



3D Radiation field pattern

