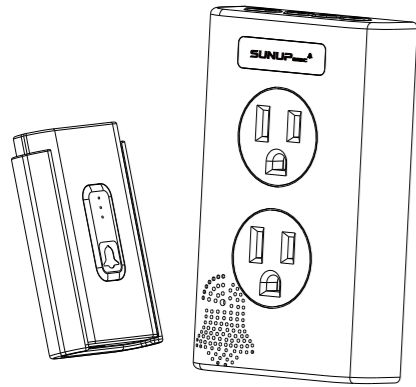


SUNUPelec

Wireless Doorbell User Manual
(Repeater Version)

Model: LM-DB100



Warranty

SUNUPelec warrants this product for a period of 3 years from the date of purchase. You are entitled to a replacement or a refund for a major failure and for compensation for any other reasonably foreseeable loss or damage. You are also entitled to have the goods repaired if the goods fail to be of acceptable quality and the failure does not amount to a major failure.

Specifications

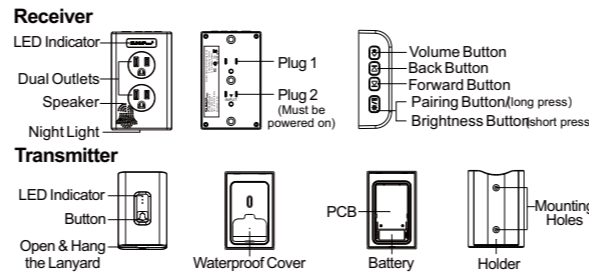
Battery in Transmitter	23A 12V alkaline battery
Power Consumption of Transmitter	<0.25W
Standby Power of Transmitter	0
Waterproof Transmitter Grade	<IP65
Working Voltage of Receiver	90-125VAC, 50/60Hz
Power Consumption of Receive	<1.5W
Wireless Range (Open Area)	1400ft (No repeater)
Selectable Ringtones	38
Volume Range	0~90 dB, 4-levels
Repeater (Yes or No)	Yes
Working Frequency	433.92MHz±200 KHz
Brightness of night light	4-levels adjustment
Receptacle Rating	10A/125V

Preparation

In the box you will find

To install you will need

Structure Diagram

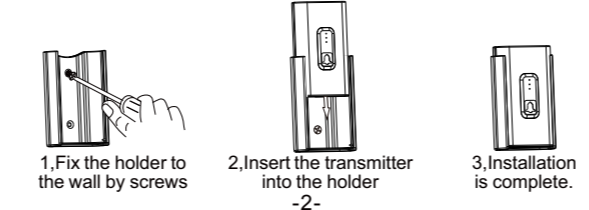


Installation Methods

NOTE: Before installation, please test the doorbell range first.

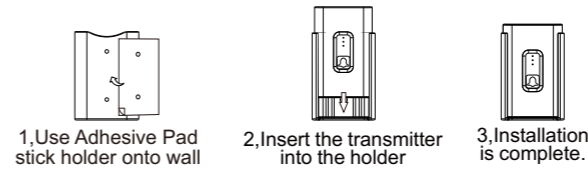
For Receive (Only suitable for wall Receptacle)
Plug receiver into wall outlet in room (★ The plug2 must be powered on), then white led will light up and "Ding Dong" sound.

For Transmitter:
Transmitter Installation Method 1: Screw/Anchors (Preferred)
1. After choosing the location of installation, put the holder (see the structure diagram) on the wall and make two marks in place of two mounting holes.
2. Drill two holes in the marked places, then insert 2 wall anchors (you can place the adhesive pad under the holder to protect the wall) and fix the holder to the wall by screws.
3. Insert the transmitter into the holder, installation is complete.

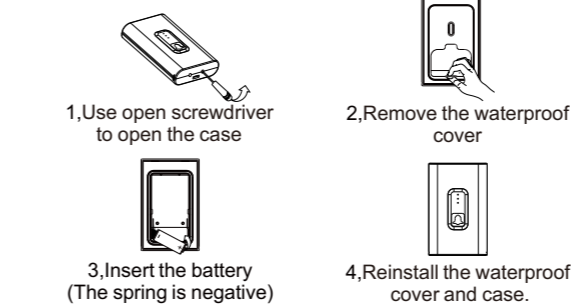


Transmitter Installation Method 2: Adhesive sticker (Optional)

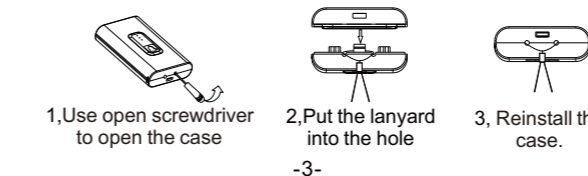
Please clean the installation area surface.
1. After choosing the location of installation, tear off one side of the double-sided adhesive tap and stick it to the underside of holder; tear off the other side and put holder onto wall, then press for 10 seconds.
2. Insert the transmitter into the holder, installation is complete.



For Battery:



For Lanyard: (★ Pager Version)



V002:28/03/24
Visit our website at: www.sunupelec.com
Email our technical support at: productsupport@sunupelec.com
Please carefully read this user manual before usage and installation

Operating Instructions

Plug in receiver into a standard wall outlet. It will flash white light and give a "Ding Dong" ringtone. Press the button of transmitter to test whether it is paired with the doorbell. The doorbell will light up and ring. If does not, please see "Pairing transmitter to receiver" on page 4.

1. Adjust the volume
Press the Volume button. It will cyclic switch between high, medium, low, and mute.

2. Set ringtone
Press the forward or back button, it will cyclic switch in 38 ringtones. Stop pressing when the tune is selected.

3. Adjust the brightness of night light
Short press the brightness button, it will cyclic switch between high, medium, low, and off brightness.

NOTE: Short press adjust brightness of night light, long press 5 seconds enter into pairing mode.

4. Pairing transmitter to receiver/Adjust the color of indicator
(1) Enters into pairing mode:
Long press pairing button for 5 seconds until the blue LED indicator lighting to enters into pairing mode.

NOTE: When entering pairing mode, short press the forward button to adjust the color of indicator, long press the forward button to clear pairing.

(2) Adjust the color of indicator:
After entering pairing mode, short press the forward or back button to change the color of indicator, stop pressing when the color is selected. (If you don't adjust the color of indicator, please skip this step)

(3) Pairing transmitter to receiver:
After selecting the color of indicator, please press the transmitter button, after receiving the signal, the indicator of the receiver flashes. Pairing and color adjustment successful.

(4) Restart:
After 5 seconds of successful pairing, the receiver will automatically restart (Please do not press any buttons), it will flash white light and give a "Ding Dong" ringtone.

NOTE: Transmitters and receivers in the same package are paired ex-factory. If they are not in the same package, they must be paired before being used together.

5. One receiver pairing more transmitters
The receiver pairs one transmitter at a time. For two or more transmitters, please follow the pairing step 4 once again.

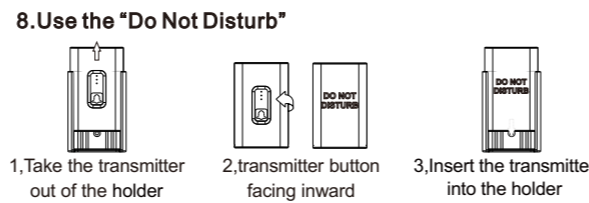
6. One transmitter pairing more receivers
The transmitter pairs one receiver at a time. For two or more receivers, please follow the pairing step 4 once again.

7. Clear pairing
If you don't need one receiver to receive all transmitter signals, please clear pairing and get a single transmitter paired.

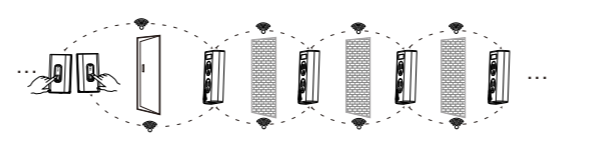
(1) Enters into pairing mode:
Long press pairing button for 5 seconds until the blue LED indicator lighting to enters into pairing mode.

(2) Clear pairing:
Long press the forward button, indicator will flash, and clear pairing is successful. After 5 seconds of successful clear pairing, the receiver will automatically restart.

(3) Pairing transmitter to receiver:
Please follow pairing step 4 for pairing.



9. Wireless Repeater Function
The wireless repeater technology to create a wireless network between the receivers. Simply place receivers within a sensible distance, ensuring the wireless signals can be received anywhere in the room, never miss a visitor again.



Troubleshooting

If	Then
The receiver doesn't sound	Ensure that the plug2 is powered on.
	Check the doorbell button battery, replace it if necessary.
	The plug of receiver is loose.
Range is reduced	The receiver could be out of range of the doorbell button.
	The receiver may not have paired with the doorbell button, See "Pairing transmitter to receiver".
	Check that the volume control is not at the mute setting.
Range is reduced	Metal structures including uPVC door frames can reduce the range. Don't mount receivers near metal structures.
	Walls and ceilings will reduce the range. Suggest using repeater to cover the entire house
	Weak batteries will reduce range. Replace every 12-24 months.

FCC Statement
This device complies with Part 15 of the FCC Rules. Operation is subject to the following two conditions: (1) this device may not cause harmful interference, and (2) this device must accept any interference received, including interferences that may cause undesired operation. This transmitter must not be co-located or operating in conjunction with any other antenna or transmitter. **Warning:** Changes or modifications to this unit not expressly approved by the party responsible for compliance could void the user's authority to operate the equipment.
NOTE: This equipment has been tested and found to comply with the limits for a Class B digital device, pursuant to Part 15 of the FCC Rules. These limits are designed to provide reasonable protection against harmful interference in a residential installation. This equipment generates, uses and can radiate radio frequency energy and, if not installed and used in accordance with the instructions, may cause harmful interference to radio communications. However, there is no guarantee that interference will not occur in a particular installation. If this equipment does cause harmful interference to radio or television reception, which can be determined by turning the equipment off and on, the user is encouraged to try to correct the interference by one or more of the following measures:
— Reorient or relocate the receiving antenna.
— Increase the separation between the equipment and receiver.
— Connect the equipment into an outlet on a circuit different from that to which the receiver is connected.
— Consult the dealer or an experience radio/TV technician for help.