

# SMD CERAMIC ANTENNA

## Data Sheet

---

---

# CS-2450-31-L

For 2400-2484MHz  
3.2x1.6mm [EIA1206]

SHENZHEN CSCURVE TECHNOLOGY CO., LTD.

## 特征 Feature

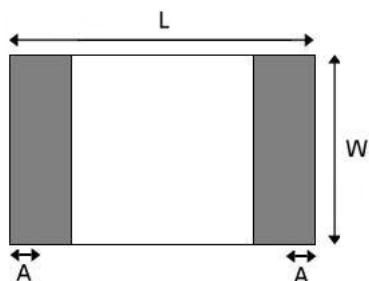
- 重量轻, 结构紧凑  
Light weight, compact
- 宽带大, 低成本  
Wide bandwidth, low cost
- 高增益内置天线  
Built-in antenna with high gain

## 应用 Application

- 蓝牙技术Bluetooth  
2.4GHz频段 IEEE802.11g/b
- 齐格比系统  
Zigbee systems
- 其它etc...

## 形状和尺寸(单位: mm)

### Shapes And Dimensions Dimensions in mm



L	W	A	H
3.10±0.10	1.55±0.10	0.40±0.20	0.55±0.1

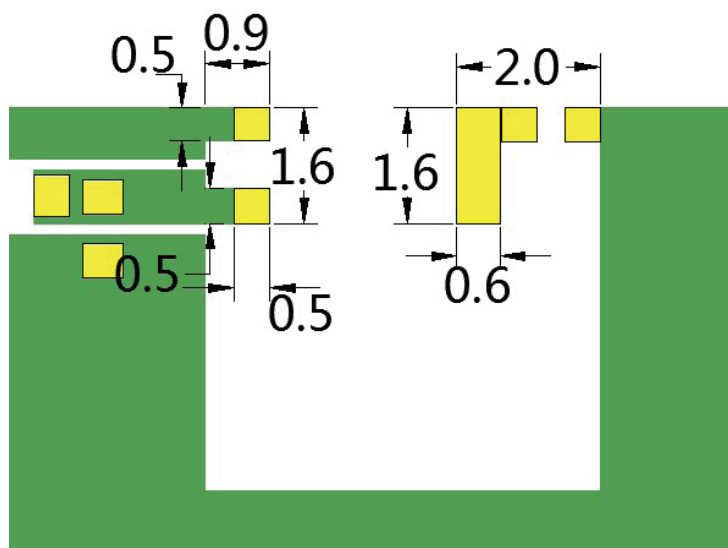


**电气特性 Electrical Characteristics per line(TA= 25°C)**

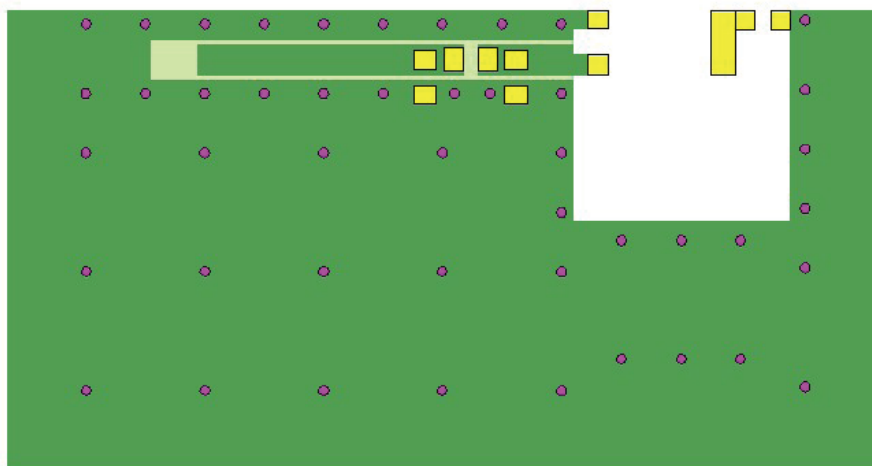
参数Parameter	规格Specification	单位Units
频带 Frequency Band	2400~2483	MHz
极化 Polarization	线极化	
*最大增益 Peak Gain	2.67	dBi
*效率 Efficiency	72.30	%
阻抗 Impedance	50	$\Omega$

**■ 编码 Part Numbering System**

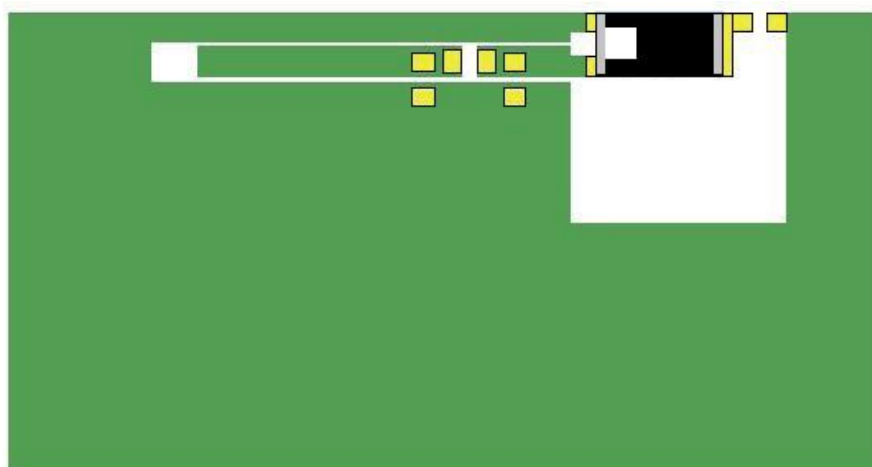
CS      -      2450      -      31      -      L  
 Material                  Frequency                  Size                  Type



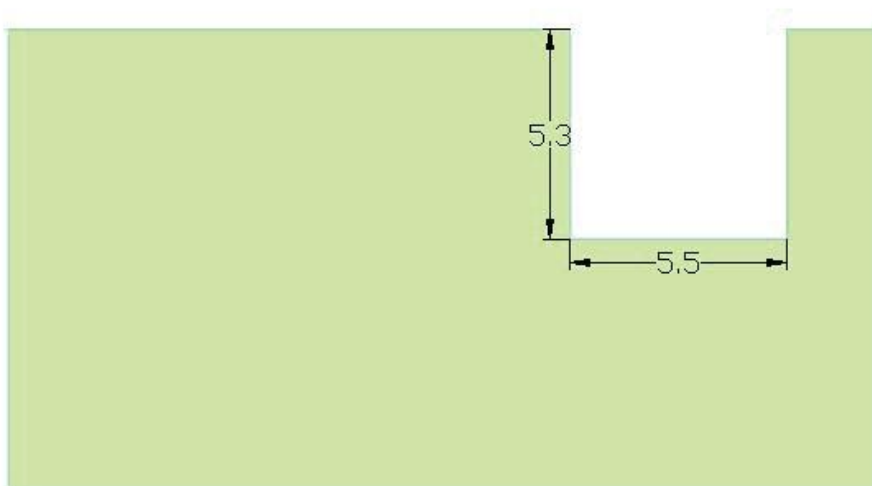
■ 评价板 Evaluation Board



- 天线
- PAD
- 底层铺铜
- 顶层铺铜
- 打孔



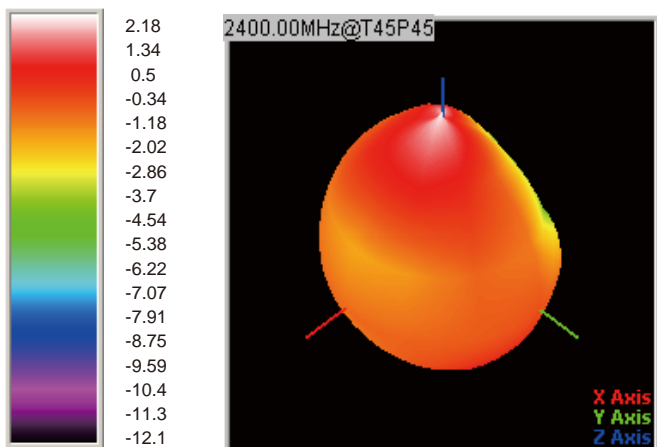
- 天线
- PAD
- 底层铺铜
- 顶层铺铜



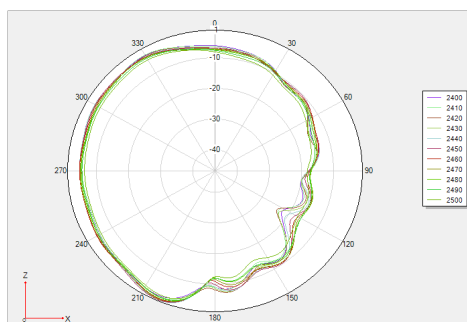
## ■ 辐射模式 Radiation Patterns

□ 2.4GHz WLAN BAND

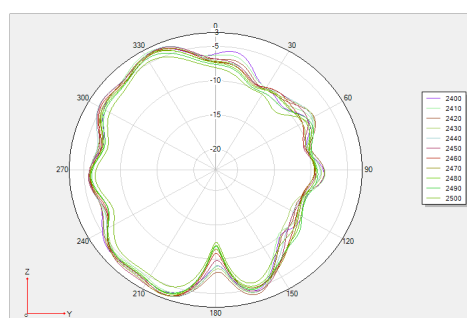
◎ 3D Gain Pattern (2400 MHz)



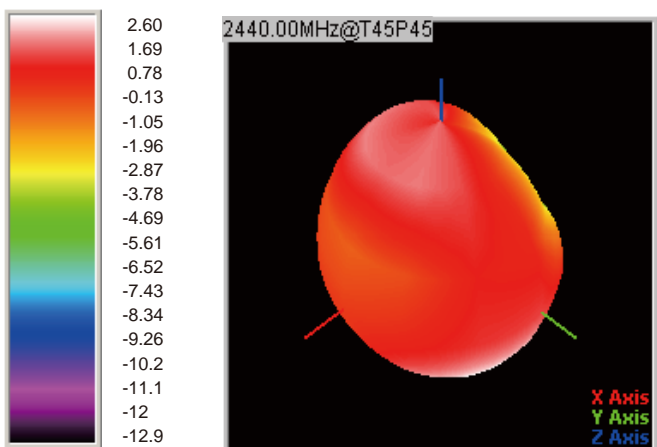
◎ 2D Gain Pattern Phi 0



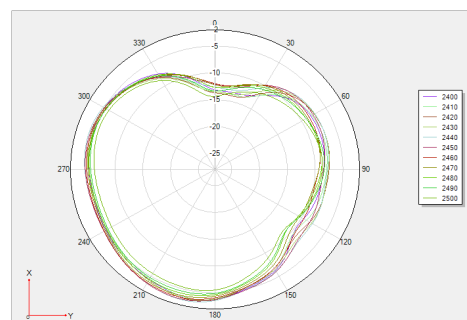
◎ 2D Gain Pattern Phi 90



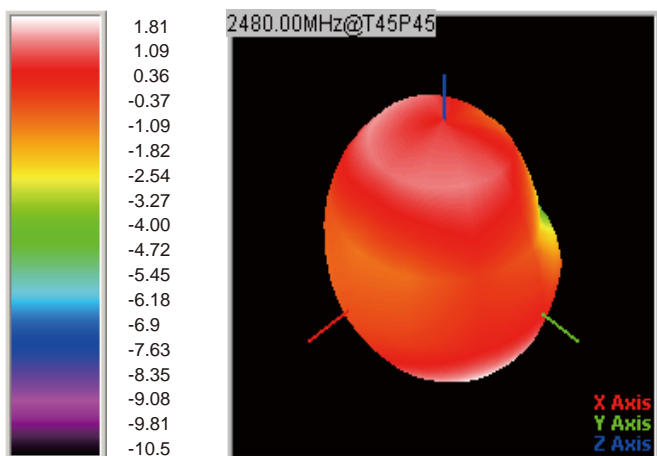
◎ 3D Gain Pattern (2440 MHz)



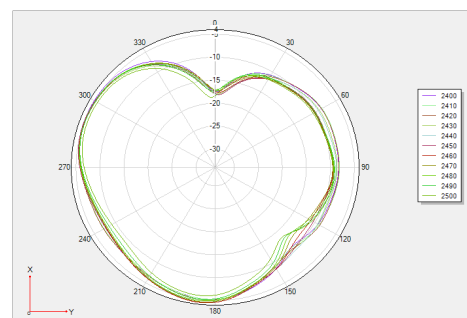
◎ 2D Gain Pattern Theta 60



◎ 3D Gain Pattern (2480 MHz)

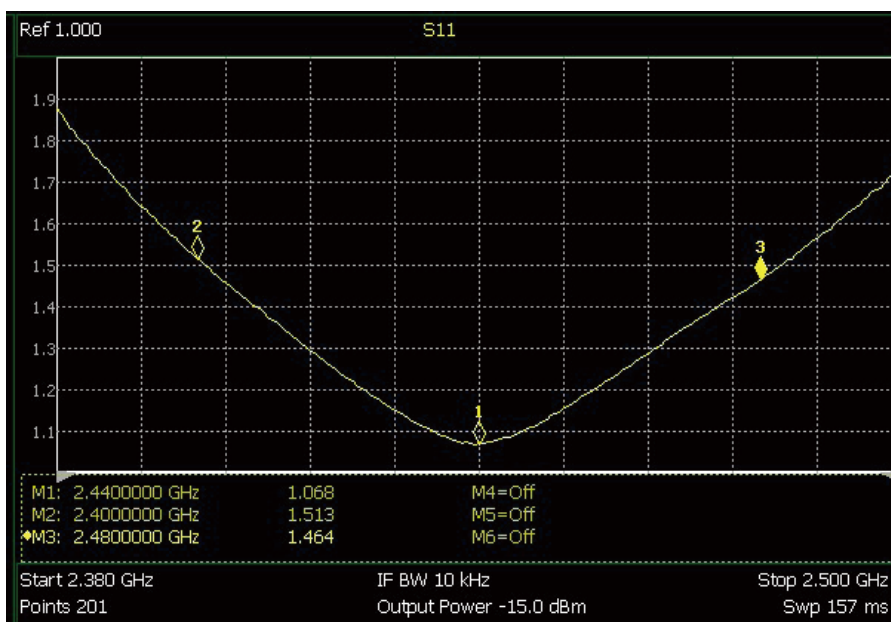
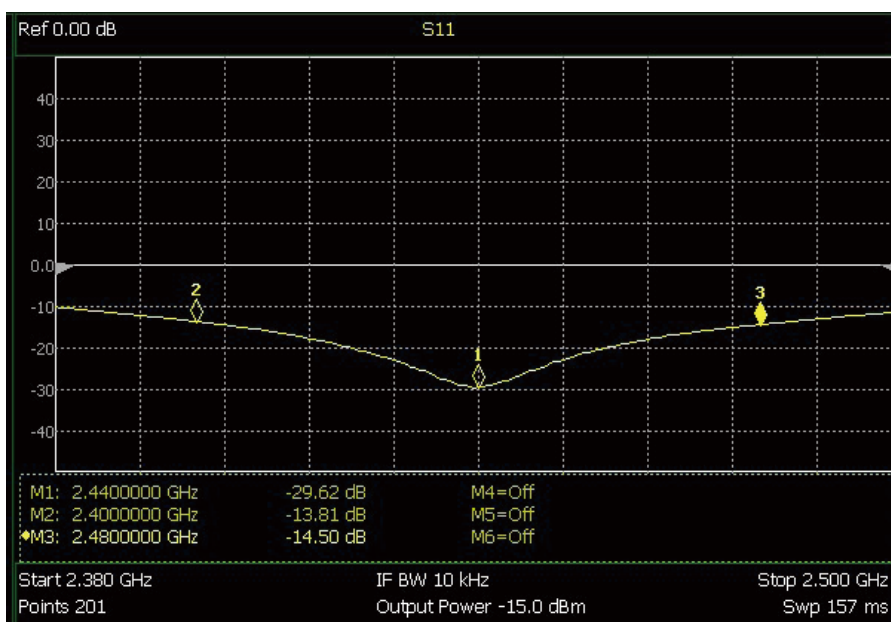


◎ 2D Gain Pattern Theta 90

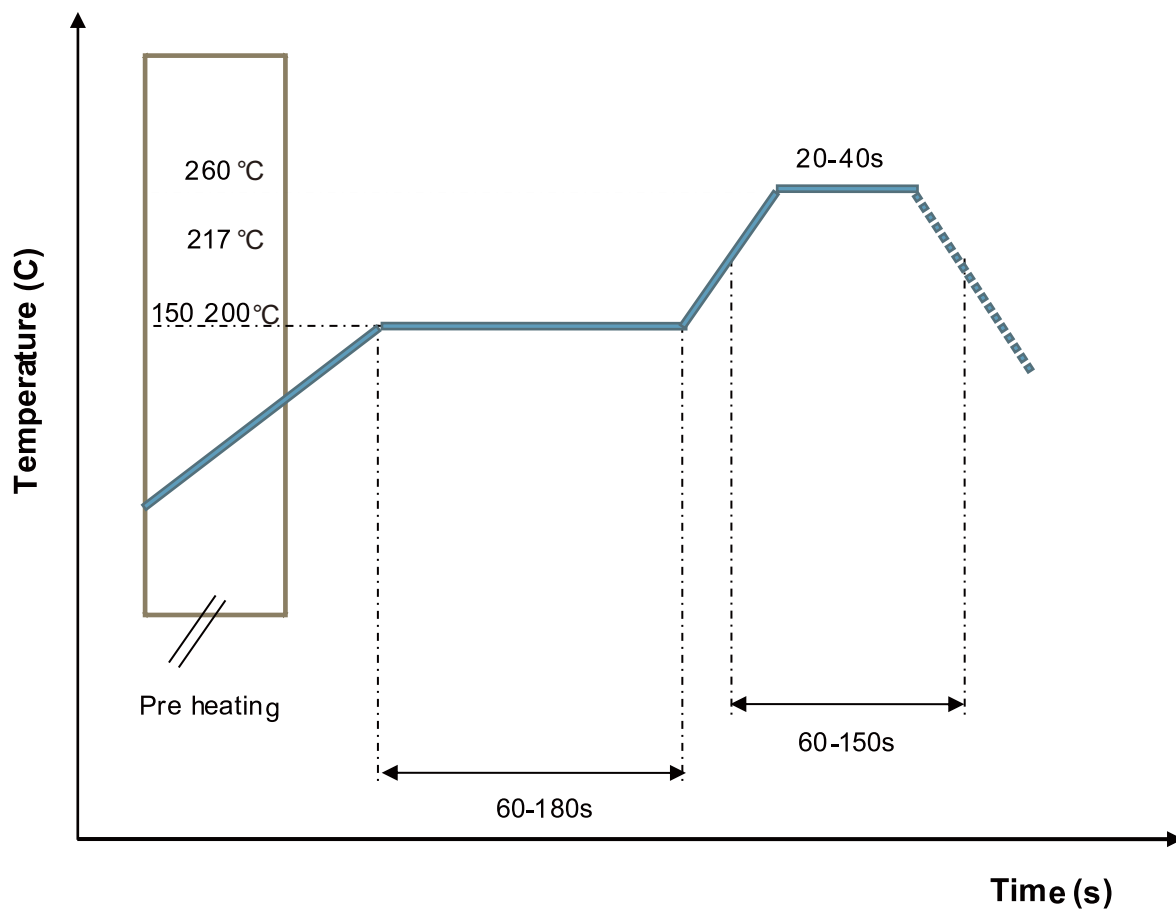


### ■ 频率特性 Frequency Characteristics

#### □ EFFICIENCY AND VSWR

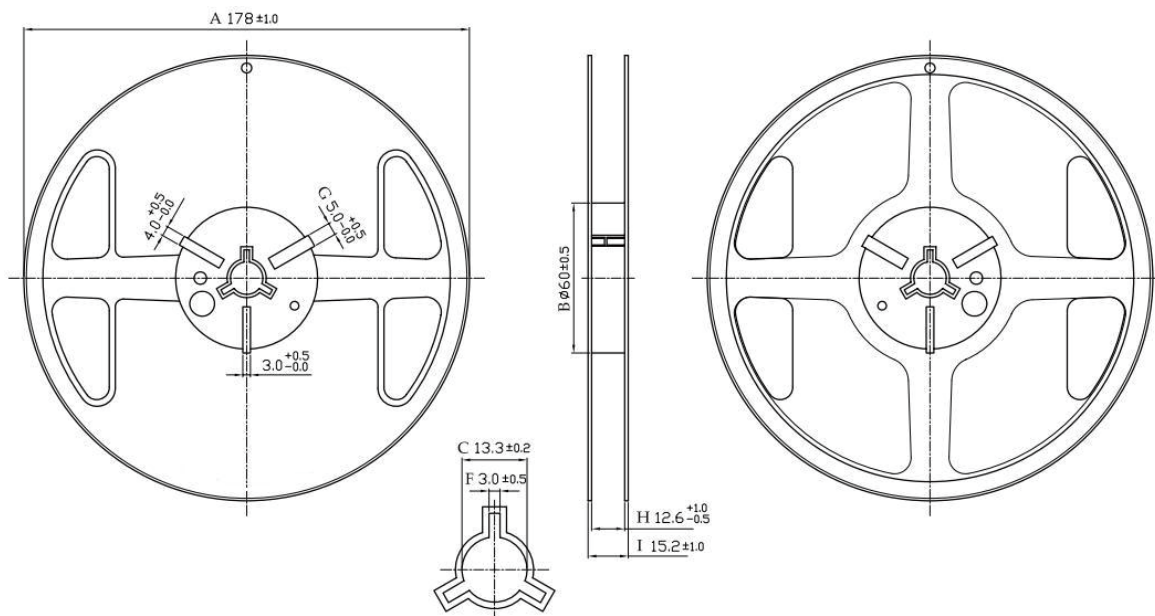


■ 推荐回流剖面  
**RECOMMENDED REFLOW PROFILE**

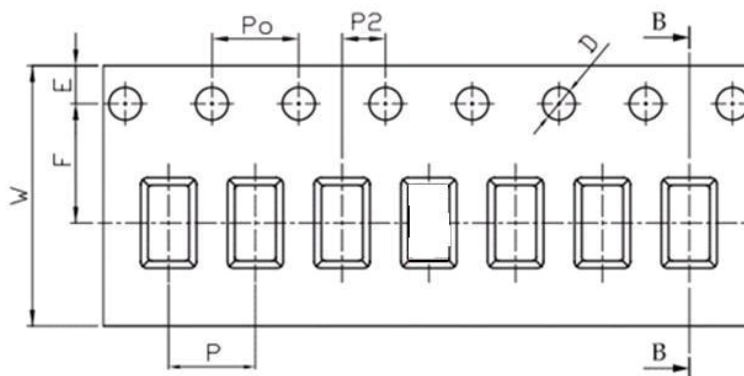


■ 包装形式 Packaging Style

□ REEL DIMENSIONS



□ 胶带尺寸 TAPE DIMENSIONS



Feature	Specifications	Tolerances
W	8.00	±0.30
P	4.00	±0.10
E	1.75	±0.10
F	3.50	±0.10
P2	2.00	±0.10
D	1.50	+0.10 -0.00
P0	4.00	±0.10
10P0	40.00	±0.20

数量Quantity:5000pieces per 7 reel