

**MUNBYN**

Version 1.00

# 2 Inch Label Maker

User Manual



**Unleash Business Creativity**

FM226

## Contents

<b>1.0. Product Introduction</b>	1
1.1. What's in the Box?	1
1.2. Printer Features	1
1.3. Load Label	2
<b>2.0. Quick Connection</b>	3
2.1. Download "Munbyn Print" APP	3
2.2. Create Account	4
2.3. Connect the Printer via Munbyn Printer	4
2.4. Open Permission	5
2.5. First Print	6
<b>3.0. Specification</b>	10
3.1. Indicator Status	10
3.2. Function of the Button	10
<b>4.0. Specification</b>	11
<b>5.0. FAQ</b>	12
5.1. Why do I need to enable location and contacts when using the Android app?	12
5.2. Why doesn't my printer turn on?	12
5.3. How do I print a self-test page?	13
5.4. Why is my label printed crooked?	14
5.5. How to replace label paper?	15
5.6. Why is my label printing blank?	16
5.7. What label sizes can the printer print?	16

<b>6.0. Support</b>	-----	17
<b>7.0. FCC statement</b>	-----	18



Deutsches Benutzerhandbuch  
Manual de usuario en español  
Manuel d'utilisation en français  
日本語のユーザーマニュアル

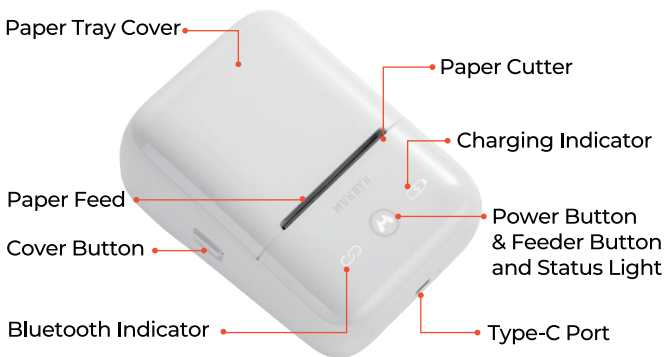
## 1.0. Product Introduction

### 1.1. What's in the Box?



- A** Label Maker
- B** User Manual
- C** Power Cable
- D** Quick Tips
- E** 50 × 30 mm (2.0 × 1.2 inches) Label

### 1.2. Printer Features



**Note:**

Label Maker supports paper widths from 20-58 mm (effective printing width for the header is up to 48mm).

**1.3. Load Label**

1. Open the lid and peel off the label seal.



2. Make sure the label paper is placed in the direction shown in the figure below, and the cover is closed.

**Note:**

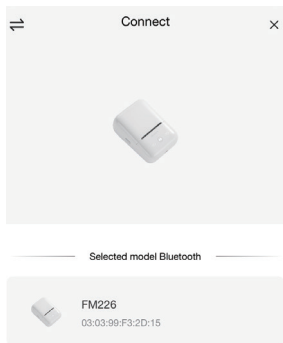
1) After the paper is put in, you need to press the power button once to calibrate the paper (printer is power on), otherwise the printing will not be correct.

2) Press and hold the power button for three seconds to turn on the printer.

## 2.0.Quick Connection

### Note:

The printer needs to be connected in the “Munbyn Print” APP, and cannot be connected directly from the Bluetooth in the mobile phone settings.



### 2.1. Download “Munbyn Print” APP

1) Search "Munbyn Print" on **APP Store** or **Google Play** to get the APP. Or please scan the QR code to download the App.



Munbyn Print

## 2.2. Create Account

Log in or register your MUNBYN account, you can also choose to go back and register later.



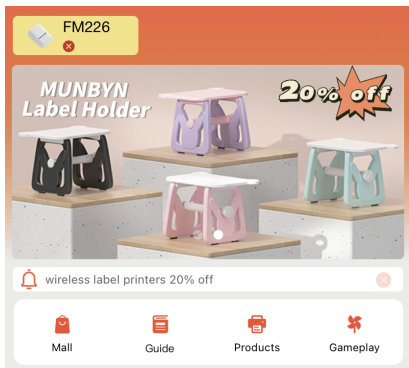
Email Login

Create Account

Have read and agree to the [terms of service](#) & [privacy policy](#)

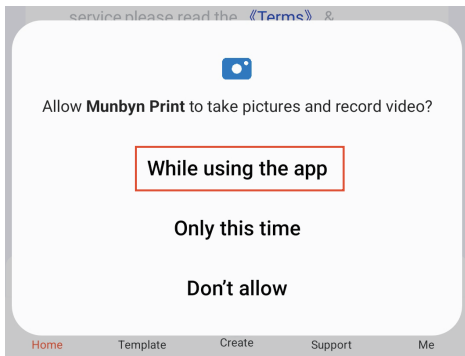
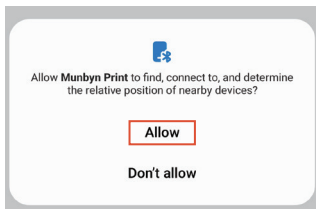
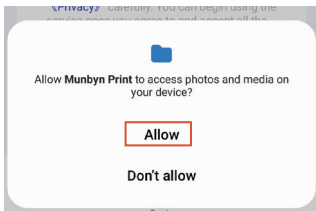
## 2.3. Connect the Printer via Munbyn Printer

1) Open the App, select your printer and connect.



## 2.4. Open Permission

App needs to obtain local file access and Bluetooth function to run normally, please follow the guide to grant App permissions.

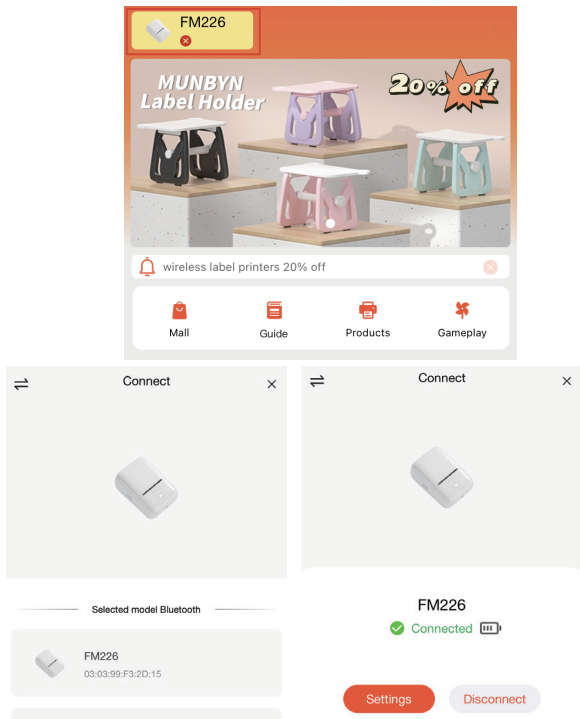




## 2.5. First Print

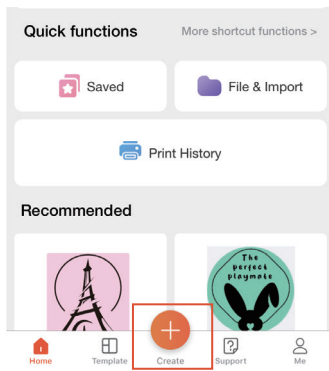
### Note:

Before starting to print, please make sure that the printer is connected. If you are in the error state as shown in the figure below, you need to check whether the printer is turned on and click the icon in the upper left corner to reconnect the printer.



After the device is successfully connected, we start creating and printing:

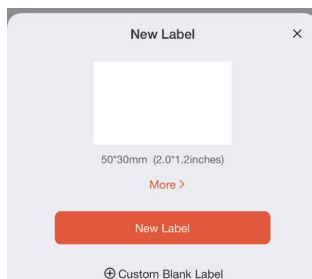
1) Click Create on the Home page.



2) Check whether the size set by the App matches the actual size of the label paper.

**Note:**

The size of the label that comes with the labels 50 × 30 mm (2.0 × 1.2 inches), if you use other labels, please pay attention to their size.



### 3) Design label

**Note:**

The template is created successfully, and the design is carried out within the template area, and the content beyond the area will not be printed.



## 4) Print label

Click "Print" to check that the label preview matches the preset. Set the print density and number and tap "Print".



## 3.0. Specification

### 3.1. Indicator Status

Indicator Type	Indicator Light	Status	Situation
Power Indicator	White	Light	Standby
Power Indicator	Red	Light	Out of paper / Cover is not closed
Charging Indicator	White	Light	Full Charge
Charging Indicator	White	Breathing Light	Charging
Charging Indicator	Red	Flash (Every 2 seconds)	Low battery
Bluetooth Indicator	White	Light	Standby (Bluetooth connected)

### 3.2. Function of the Button

Button	Operation method	Functions
Power button	Press and hold the button for three seconds	Turn on
Power button	Press and hold the button for three seconds	Turn off
Power button	Click	Print out the paper
Power button	Double Click	Print self-test paper

## 4.0. Specification

Printing Method	Thermal Direct
Resolution	203 dpi (8 dots/mm)
Print Speed	80 mm/s
Interface	Type-C port
Lithium Battery	2000mAh
Power Adapter	Input: AC 100V-240V, 50-60Hz Output: 5V-2A
Label Width	20-58 mm (The effective printing width for the header is 48 mm)
Printing Life	50KM
Operating System	Android / iOS
Product Size	D 5.23 in * W 3.87 in * H 2.57 in

## 5.0. FAQ

### 5.1. Why do I need to enable location and contacts when using the Android app?

It is Google's rule. Our App needs to abide by this rule on the Google platform. But please rest assured that we will firmly protect user privacy.

### 5.2. Why doesn't my printer turn on?

Use the Type-C cable to connect an external power supply of 5V/2A or above to charge the printer. During charging, the printer's indicator light will flash white. When fully charged, it will turn into a steady white light.



Make sure the printer has enough power, then press and hold the power button for three seconds to turn on. If the indicator light does not display when the printer is charging or the printer still does not turn on after charging, please contact us to replace the printer through the following methods.

E-mail: [support@munbyn.com](mailto:support@munbyn.com) (24-7 online support)

WhatsApp: +86 13352950490

Phone: +1 650 206 2250

E-mail: [Support@munbyn.com](mailto:Support@munbyn.com)

---

### **5.3. How do I print a self-test page?**

Click the indicator light twice, the printer will print a self-test page, you can get the following information from the self-test page.

1. Printer Bluetooth name
2. Printer firmware version

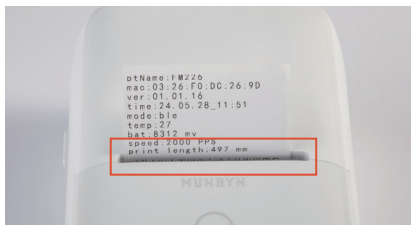


## 5.4. Why is my label printed crooked?

Check whether the label stock is placed correctly.



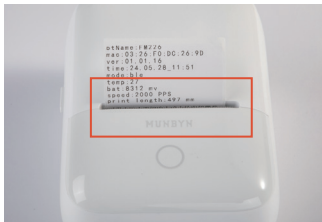
The stopper holds the label paper



The gap between the labels is flush with the outlet.

## 5.5. How to replace label paper?

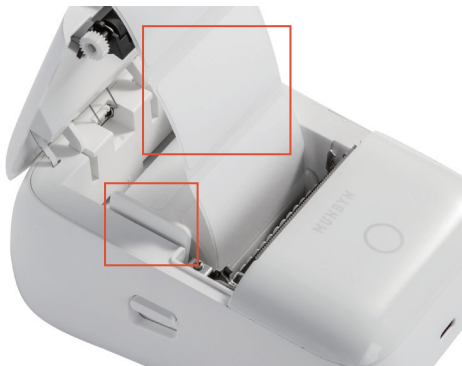
Open the cover of the printer -> Take out the original label paper -> Remove the stopper -> Insert the label paper -> Install the stopper to fix the label paper -> Make sure the label paper is flush with the outlet.



```
otName: MW26  
mno: 03_26_FD_DC_26_9D  
ver: 01_01_16  
time: 24_05_28_11_51  
mode: hls  
Temp: 27  
bat: 9312 ev  
speed: 7000 FPS  
print: length: 497 mm
```

## 5.6. Why is my label printing blank?

1. Check that the tear-off side of the label paper is facing you.



2. Make sure that your label paper is a thermal material. Thermal printers can only print on thermal label paper.
3. After making the above confirmation, if the printer still prints blank labels, please print a self-test page. If the self-test page can be printed, your text or image contrast is too low, please use darker text or image. If the self-test page cannot be printed, please contact us.  
WhatsApp: +86 133 5295 0490  
Phone: +1 650 206 2250  
Email: support@munbyn.com

## 5.7. What label sizes can the printer print?

Paper Thickness: 0.08-0.2mm  
Paper width: Max 58mm

## 6.0. Support



WhatsApp:  
+86 13352950490



FB message  
Munbynofficial

**E-mail:** support@munbyn.com (24-7 online support)

**WhatsApp:** +86 13352950490

**Phone:** +1 650 206 2250

**Skype:** munbyn

**Support time:** Monday to Friday 24 hours

MUNBYN provides 24 months warranty and lifetime free service. If you encounter any issues with the product, please contact the MUNBYN team to promptly receive troubleshooting tips or a replacement.

You can access the link below or scan the QR code to download user manuals in other languages.



Other Languages:  
[munbyn.biz/226minorlang](https://munbyn.biz/226minorlang)

Deutsches Benutzerhandbuch  
Manual de usuario en español  
Manuel d'utilisation en français  
日本語のユーザーマニュアル

## 7.0. FCC statement

Changes or modifications not expressly approved by the party responsible for compliance could void the user's authority to operate the equipment.

This equipment has been tested and found to comply with the limits for a Class B digital device, pursuant to Part 15 of the FCC Rules. These limits are designed to provide reasonable protection against harmful interference in a residential installation. This equipment generates uses and can radiate radio frequency energy and, if not installed and used in accordance with the instructions, may cause harmful interference to radio communications.

However, there is no guarantee that interference will not occur in a particular installation. If this equipment does cause harmful interference to radio or television reception, which can be determined by turning the equipment off and on, the user is encouraged to try to correct the interference by one or more of the following measures:

- Reorient or relocate the receiving antenna.
- Increase the separation between the equipment and receiver.
- Connect the equipment into an outlet on a circuit different from that to which the receiver is connected.
- Consult the dealer or an experienced radio/TV technician for help.

This device complies with part 15 of the FCC rules. Operation is subject to the following two conditions (1) this device may not cause harmful interference, and (2) this device must accept any interference received, including interference that may cause undesired operation.

This equipment complies with FCC radiation exposure limits set forth for an uncontrolled environment.

**- English: "**

**This device complies with Industry Canada licence-exempt RSS standard(s). Operation is subject to the following two conditions:**

**(1) this device may not cause interference, and**

**(2) this device must accept any interference, including interference that may cause undesired operation of the device."**

**- French:"**

**Le présent appareil est conforme aux CNR d'Industrie Canada applicables aux appareils radio exempts de licence. L'exploitation est autorisée aux deux conditions suivantes :**

**(1) l'appareil n' doit pas produire de brouillage, et**

**(2) l'utilisateur de l'appareil doit accepter tout brouillage radioélectrique subi, même si le brouillage est susceptible d'en compromettre le fonctionnement."**

**MUNBYN**

**Unleash Business Creativity**