

摩托车行车记录仪:MT005

特别提醒:本产品为5V-40V供电,禁止使用40V以上供电。

显示界面

(主界面)



1. 时间日期显示

2. GPS车速显示

3. 车速单位显示

4. 胎压异常图标(胎压异常时显示)

5. 卫星颗数显示

6. 驾驶模式

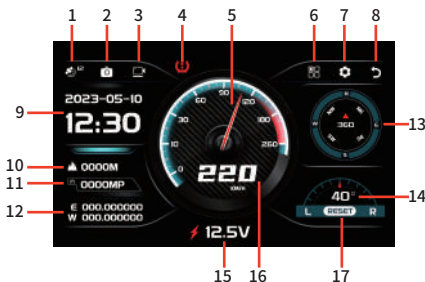
7. 录像模式

8. 录像回放

9. 系统设置

驾驶模式

(界面1)



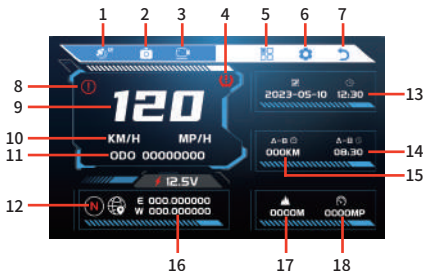
- | | | | | |
|----------|------------|---------|-----------|----------|
| 1. 卫星颗数 | 2. 拍照 | 3. 录像 | 4. 胎压异常图标 | 5. 车速码表 |
| 6. 返回首页 | 7. 系统设置 | 8. 返回 | 9. 时间日期 | 10. 海拔高度 |
| 11. 气压显示 | 12. 经纬度 | 13. 指南针 | 14. 压弯角度 | 15. 实时电压 |
| 16. 车速显示 | 17. 压弯角度校准 | | | |

(界面2)



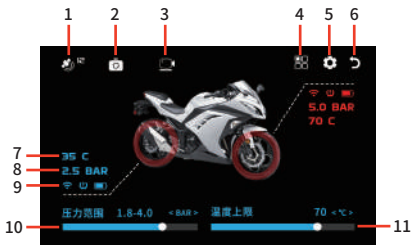
- | | | | | |
|---------|----------|----------|-----------|----------|
| 1. 卫星颗数 | 2. 拍照 | 3. 录像 | 4. 车速显示 | 5. 超速报警 |
| 6. 返回首页 | 7. 系统设置 | 8. 返回 | 9. 胎压异常图标 | 10. 车速码表 |
| 11. 经纬度 | 12. 气压显示 | 13. 海拔高度 | 14. 时间日期 | 15. 车速单位 |
| 16. 总里程 | 17. 压弯角度 | | | |

(界面3)



- | | | | | |
|---------|----------|----------|-----------|----------|
| 1. 卫星颗数 | 2. 拍照 | 3. 录像 | 4. 胎压异常图标 | 5. 返回首页 |
| 6. 系统设置 | 7. 返回 | 8. 超速报警 | 9. 车速显示 | 10. 车速单位 |
| 11. 总里程 | 12. 指南针 | 13. 时间日期 | 14. 行驶时间 | 15. 行驶里程 |
| 16. 经纬度 | 17. 海拔高度 | 18. 气压显示 | | |

(胎压显示界面)



- | | | | | |
|----------|----------|---------|----------------------|---------|
| 1. 卫星颗数 | 2. 拍照 | 3. 录像 | 4. 返回首页 | 5. 系统设置 |
| 6. 返回 | 7. 轮胎温度 | 8. 轮胎压力 | 9. 传感器信号/轮胎异常/电池电量提示 | |
| 10. 压力范围 | 11. 温度上限 | | | |

(录像界面)



- | | | | | |
|----------|----------|-----------|-----------|---------|
| 1. 系统设置 | 2. 返回首页 | 3. 录像 | 4. 拍照 | 5. 镜头切换 |
| 6. 视频回放 | 7. 录音图标 | 8. WIFI连接 | 9. 胎压异常图标 | |
| 10. 录像时间 | 11. 指南针 | 12. 经纬度 | 13. 气压显示 | |
| 14. 海拔高度 | 15. 时间日期 | 16. 车速显示 | | |

系统设置说明

镜像设置	开启/关闭, 前后镜头画面镜像
循环录影	可调范围 (1-3分钟)
录音开关	开启或关闭录音
文件自动加锁	可调范围 (关闭、低、中、高)
停车监控	可调范围 (关闭、低、中、高)
语言	可切换中文、繁体、英文等多国语言显示
屏幕亮度	可调范围 (关、中、高)
自动熄屏	可调范围 (关闭、30秒、60秒)
GPS状态	查看当前GPS信号定位状态
速度单位	可切换车速单位为公里KMH、英里MPH
超速设置	设置超速报警数值, 调节范围40-260
车速校准	根据实际车速微调车速误差
里程设置	根据车辆行驶的实际里程进行设置总里程
里程单位	可设置里程单位为千米KM、米mi
倾斜角设置	可调节压弯角度, 调节范围0-90度
TPMS	进入胎压设置
报警开关	开启/关闭报警开关, 关闭无声音提示
电压微调	微调电压显示, 调节范围0-2V
触摸开关	开启可锁定触摸操作防止误碰
时区设置	根据所在地区进行设置时区
时间设置	根据当前时间设置时间日期
存储卡信息	查看存储卡数据信息
格式化	删除存储卡所有数据
恢复出厂设置	恢复出厂设置
版本信息	查看版本信息, 扫码下载APP连接WIFI (可手机查看录像视频)

胎压设置说明

胎压报警上限	可调范围 (0-6.0)
胎压报警下限	可调范围 (0-4.0)
温度报警上限	可调范围 (0-100)
前后轮胎传感器交换	关闭前后轮胎传感器交换
胎压单位	可切换胎压单位为BAR/PSI
温度单位	可切换温度单位为摄氏度°C/华氏度°F
胎压配对	重新配对胎压传感器

产品尺寸 (140.5*82.5*23.5mm)



工作环境及技术指标

电源	5-40V
工作温度	-20°C~+80°C
工作功耗	600MA
休眠功耗	10MA
GPS冷启动时间	5-15秒
GPS热启动时间	45-60秒
摄像头广角	140°
摄像头像素	200万
屏幕分辨率	854*480
是否防水	是
图片格式	JPG
视频格式	TS流
停车守卫	支持
视频紧急锁定	支持
内存卡	最大支持256G
WLAN	2.4G
产品尺寸	140.5*82.5*23.5mm
主机重量	265G

Motorcycle driving recorder: MT005

Special reminder: This product is powered by 5V-40V, and it is prohibited to use power supplies above 40V.

Display interface

(Main interface)



1. Time and date display

2. GPS speed display

3. Vehicle speed unit display

4. Abnormal tire pressure icon (displayed when tire pressure is abnormal)

5. The number of satellites shows

6. Driving mode

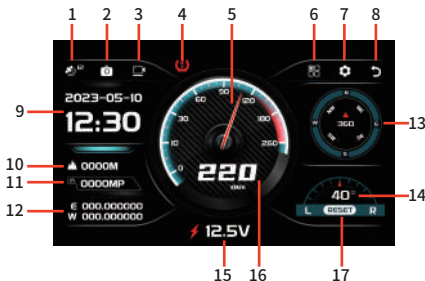
7. Recording mode

8. Video playback

9. System settings

Driving mode

(Interface 1)



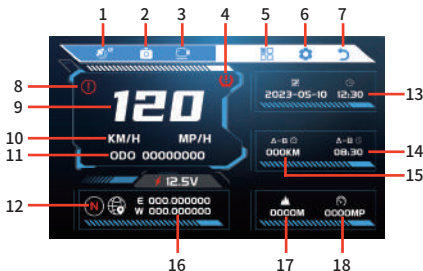
- | | | | |
|-------------------------------|-----------------------|--------------------------|--------------------------------|
| 1. Number of satellites | 2. Photography | 3. Video recording | 4. Abnormal tire pressure icon |
| 5. Vehicle speed code table | 6. Return to homepage | 7. System settings | 8. Return to |
| 9. Time Date | 10. Altitude | 11. Air pressure display | 12. Latitude and longitude |
| 13. Compass | 14. Bending angle | 15. Real time voltage | 16. Vehicle speed display |
| 17. Bending angle calibration | | | |

(Interface 2)



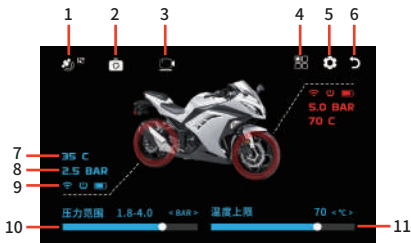
- | | | | |
|--------------------------------|-----------------------|----------------------------|--------------------------|
| 1. Number of satellites | 2. Photography | 3. Video recording | 4. Vehicle speed display |
| 5. Overspeed alarm | 6. Return to homepage | 7. System settings | 8. Return to |
| 9. Abnormal tire pressure icon | 10. Speedometer | 11. Longitude and latitude | 12. Air pressure display |
| 13. Altitude | 14. Time Date | 15. Vehicle speed unit | 16. Total mileage |
| 17. Bending angle | | | |

(Interface 3)



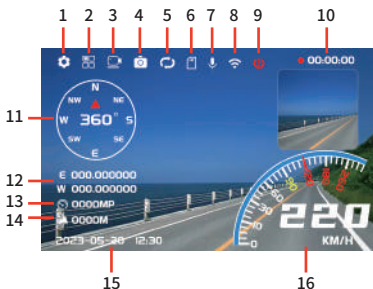
- | | | | |
|--------------------------|--------------------------|--------------------|--------------------------------|
| 1. Number of satellites | 2. Photography | 3. Video recording | 4. Abnormal tire pressure icon |
| 5. Return to homepage | 6. System settings | 7. Return | 8. Overspeed alarm |
| 9. Vehicle speed display | 10. Vehicle speed unit | 11. Total mileage | 12. Compass |
| 13. Time Date | 14. Travel time | 15. Mileage | 16. Longitude and latitude |
| 17. Altitude | 18. Air pressure display | | |

(Tire pressure display interface)



- | | | | |
|--|--------------------|-----------------------------|-----------------------|
| 1. Number of satellites | 2. Photography | 3. Video recording | 4. Return to homepage |
| 5. System settings | 6. Return | 7. Tire temperature | 8. Tire pressure |
| 9. Sensor signal/tire abnormality/battery level prompt | 10. Pressure range | 11. Temperature upper limit | |

(Video interface)



- | | | | |
|--------------------------------|-----------------------|--------------------|----------------------------|
| 1. System settings | 2. Return to homepage | 3. Video recording | 4. Photography |
| 5. Camera switching | 6. Video playback | 7. Recording icon | 8. WIFI connection |
| 9. Abnormal tire pressure icon | 10. Recording time | 11. Compass | 12. Latitude and longitude |
| 13. Air pressure display | 14. Altitude | 15. Time Date | 16. Vehicle speed display |

System Settings Description

Mirror Configuration	On/off, front and rear camera images mirrored
Loop recording	Adjustable range (1-3 minutes)
Recording switch	Turn recording on or off
Automatic file locking	Adjustable range (off, low, medium, high)
Parking monitoring	Adjustable range (off, low, medium, high)
language	Can switch between multiple languages such as Chinese, traditional, and English for display
Screen brightness	Adjustable range (off, medium, high)
Automatic screen shutdown	Adjustable range (off, 30 seconds, 60 seconds)
GPS status	View the current GPS signal positioning status
Speed unit	Switchable vehicle speed units in kilometers (KMH) and miles (MPH)
Overspeed setting	Set the overspeed alarm value, with an adjustment range of 40-260
Vehicle speed calibration	Fine tune vehicle speed error based on actual vehicle speed
Mileage setting	Set the total mileage based on the actual mileage of the vehicle
Mileage unit	Mileage units can be set to kilometers, kilometers, and meters
Tilt angle setting	Adjustable bending angle, adjustable range 0-90 degrees
TPMS	Enter tire pressure setting
Alarm switch	Turn on/off alarm switch, turn off without sound prompt
Voltage fine-tuning	Fine tune voltage display, adjustment range 0-2V
Touch switch	Enable lockable touch operation to prevent accidental touch
time zone	Set the time zone according to the location
time setting	Set the time and date based on the current time
Memory card information	View storage card data information
format	Delete all data from the storage card
Restore factory settings	Restore factory settings
Version information	View version information, scan the code to download the app and connect to WIFI (you can view video recordings on your phone)

Tire pressure setting instructions

Upper limit of tire pressure warning	Adjustable range (0-6.0)
Lower limit of tire pressure warning	Adjustable range (0-4.0)
Temperature alarm upper limit	Adjustable range (0-100)
Exchange of front and rear tire sensors	Turn off the exchange of front and rear tire sensors
Tire pressure unit	Switchable tire pressure units are BAR/PSI
Temperature unit	Switchable temperature units are Celsius °C/Fahrenheit °F
Tire pressure pairing	Re pair tire pressure sensors

Product dimensions (140.5 * 82.5 * 23.5mm)



Work environment and technical indicators

source	5-40V
working temperature	-20 °C~+80 °C
Working power consumption	600MA
Sleep power consumption	10MA
GPS cold start time	5-15 seconds
GPS hot start time	45-60 seconds
Camera Wide Angle	140 °
Camera pixels	2 million
Screen resolution	854 * 480
Is it waterproof	yes
Image Format	JPG
Video Format	TS stream
Parking Guard	support
Video emergency lock	support
Memory card	Maximum support for 256GB
WLAN	2.4G
Product size	140.5 * 82.5 * 23.5mm
Host weight	265G

FCC Warning

This device complies with Part 15 of the FCC Rules. Operation is subject to the following two conditions:

(1) This device may not cause harmful interference, and (2) this device must accept any interference received, including interference that may cause undesired operation.

NOTE 1: This equipment has been tested and found to comply with the limits for a Class B digital device, pursuant to part 15 of the FCC Rules. These limits are designed to provide reasonable protection against harmful interference in a residential installation. This equipment generates, uses and can radiate radio frequency energy and, if not installed and used in accordance with the instructions, may cause harmful interference to radio communications. However, there is no guarantee that interference will not occur in a particular installation. If this equipment does cause harmful interference to radio or television reception, which can be determined by turning the equipment off and on, the user is encouraged to try to correct the interference by one or more of the following measures:

- Reorient or relocate the receiving antenna.
- Increase the separation between the equipment and receiver.
- Connect the equipment into an outlet on a circuit different from that to which the receiver is connected.
- Consult the dealer or an experienced radio/TV technician for help.

NOTE 2: Any changes or modifications to this unit not expressly approved by the party responsible for compliance could void the user's authority to operate the equipment.

RF Exposure Statement

To maintain compliance with FCC'S RF Exposure guidelines, This equipment should be installed and operated with minimum distance of 20cm between the radiator and your body. This device and its antenna(s) must not be co-located or operation in conjunction with any other antenna or transmitter.