

Projection lamp  
012-2402



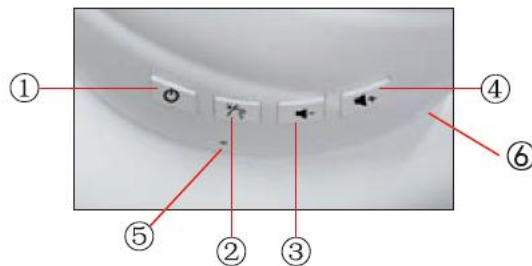
## User's Manual

No.012-2402B

## Unboxing Check:

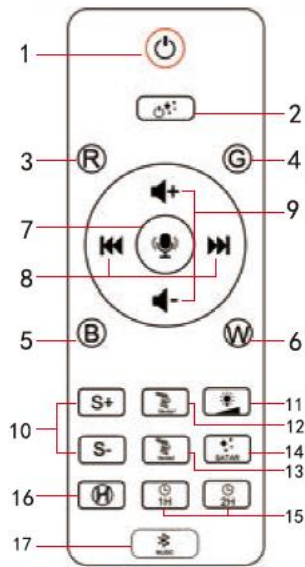
Thank you for purchasing our products, please read the instruction manual carefully before use. Instruction manual contains necessary safety advice and user instructions, follow the instruction manual to operate in order to avoid damaging the product for misuse. Check whether the product is damaged or not when you receive the product.

## Host Key Introduction:

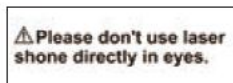


- ① Power Button: ON/ OFF (Aurora Lighting & Star Effect)
- ② Stars Light / Northern Light Mode Button
- ③ Volume -
- ④ Volume +
- ⑤ Remote control sensor.
- ⑥ Type-C interface.

## Remote Control Instructions:



1		Power Button
2		Star light Button
3		Red northern light
4		Green northern light
5		Blue northern light
6		White northern light
7		Musical rhythm pattern (When the music is playing, the lights will move with the music)
8		Previous song / Next song
9		Volume +/-
10		Northern Lights flow speed: Stop - Slow - Medium - Fast
11		The brightness Control Button of Northern Light: The default brightness is set to 3rd level when turn on the light. There are five levels of light brightness.
12		Northern light Mode 1
13		Northern light Mode 2
14		Star Lights Mode Button: Twinkle - Long light
15		1 hour timing / 2 hours timing
16		Cancel timing mode
17		Bluetooth connection Button



## Specification:

1. [Product Name]: Snail Aurora projection lamp
2. [Product Model]: 012-2402B (Bluetooth)
3. [Product Gross Weight]: 324g
4. [Product switch]: key switch, remote control switch
5. [Material]: ABS
6. [Product Size]: 14.8\*10\*12.2cm
7. [Packaging Size]: 14.5\*10\*12.5cm
8. [LED light power]: 1 \* 4W
9. [Green light power]: < 39mW
10. [Input Current]: USB DC5V/2A
11. [Operation Temperature]: -10°C - 40°C
12. [Projection Area]: 15 - 50 square meters

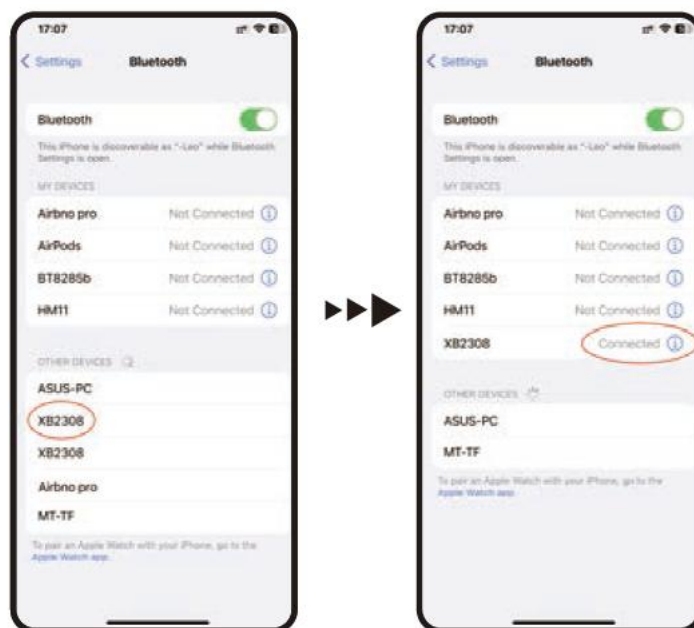
## Applications :

The galaxy projector is suitable for sleeping in the bedroom, relaxing in the living room, creating a home theater atmosphere, decorations, gifts. It can also come in handy for photoshoots, dates, parties and more.

---

This product is classified as a Class 1 laser product and complies with the applicable parts of IEC/EN 60825-1

## Bluetooth Connection:



### Bluetooth Connection:

After turning on the projection light, activate your phone Bluetooth and search device: "XB2308", entering pairing mode. "Bluetooth Connection" is played when the pairing is successful.

## Cautions:

1. The power requirement of this product is USB-DC:5V/2A.
2. The product needs to be connected to the power cord to use.
3. Use the remote correctly and make sure it is pointing at the infrared sensor.
4. The light source of stars and nebulae is strong, please do NOT look directly at the light source.

## Packaging:



Aurora Star  
Projector x1



Remote control  
x1



Type-C  
x1



User's  
Manual x1



MADE IN CHINA

**Federal Communications Commission Notice**

This device complies with part 15 of the FCC Rules. Operation is subject to the following two conditions: (1) This device may not cause harmful interference, and (2) this device must accept any interference received, including interference that may cause undesired operation.

Any Changes or modifications not expressly approved by the party responsible for compliance could void the user's authority to operate the equipment.

**Note:** This equipment has been tested and found to comply with the limits for a Class B digital device, pursuant to part 15 of the FCC Rules. These limits are designed to provide reasonable protection against harmful interference in a residential installation. This equipment generates uses and can radiate radio frequency energy and, if not installed and used in accordance with the instructions, may cause harmful interference to radio communications. However, there is no guarantee that interference will not occur in a particular installation. If this equipment does cause harmful interference to radio or television reception, which can be determined by turning the equipment off and on, the user is encouraged to try to correct the interference by one or more of the following measures:

- Reorient or relocate the receiving antenna.
- Increase the separation between the equipment and receiver.
- Connect the equipment into an outlet on a circuit different from that to which the receiver is connected.
- Consult the dealer or an experienced radio/TV technician for help.

This equipment complies with FCC radiation exposure limits set forth for an uncontrolled environment. This equipment should be installed and operated with minimum distance 20cm between the radiator & your body.