

# 21\*14cm

英語

日语

德语

## Installation instructions



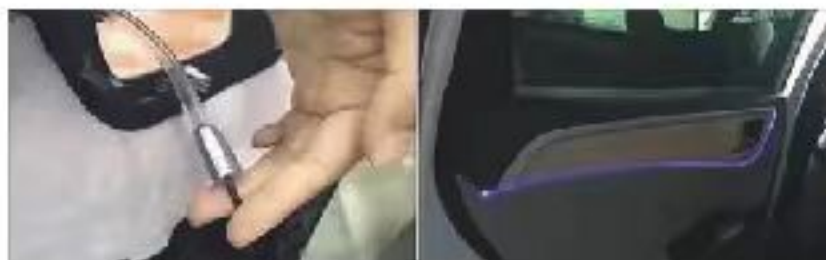
Before installation, please confirm whether the lamp and light guide can work properly.



Open the door and fix the light guide to the seam. Fix the tube and find the position inside the door.



Insert the photoconductive tube into the hole in the front door of the light source.



Insert the light source into the host and reinstall the door panel.  
**Note:** during the installation process, it is troublesome to walk the line. You need to find a professional master to install it. For detailed installation video, please scan the QR code on the right.

## インストール手順

取り付け前に、ライトとライトガイドが正常に動作するかどうかを確認してください。



ドアを開けて、ライトガイドを継ぎ目に固定します。パイプを固定し、ドア内の位置を見つけます。



ライトガイドを光源の前面ドアの穴に挿入します。



光源を本体に挿入し、ドアパネルを取り付け直します。  
注意取り付け中は、歩くのが面倒ですこの線。専門の師匠を探してインストールする必要があります。の順にクリックしますビデオを詳しくインストールするには、右側のQRコードをスキャンしてください。

## Installation Anweisung

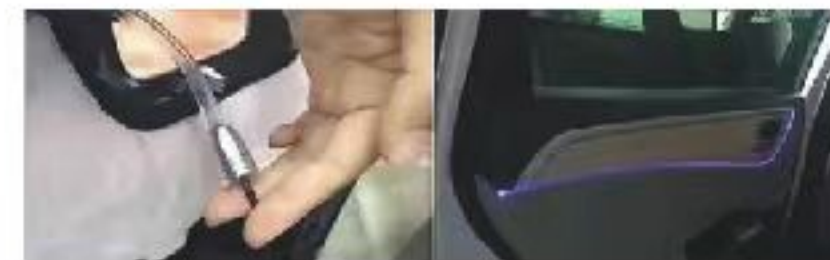
Stellen Sie vor der Installation sicher, dass die Lampe und die Leuchte ordnungsgemäß funktionieren.



Öffnen Sie die Tür und befestigen Sie die Lichtleitungen an den Nähen. Befestigen Sie das Rohr und finden Sie die Position innerhalb der Tür.



Legen Sie die optoelektrischen Leitungen in die Löcher der Vorderseite der Lichtquelle.



Legen Sie die Lichtquelle in den Host ein und installieren Sie die Türplatte neu.

**Achtung:** Bei der Installation ist das Laufen schwieriger. Sie müssen einen professionellen Meister finden, um es zu installieren. Für detaillierte Installationsvideos scannen Sie bitte den QR-Code auf der rechten Seite.

FCC Warning:

This equipment has been tested and found to comply with the limits for a Class B digital device, pursuant to part 15 of the FCC Rules. These limits are designed to provide reasonable protection against harmful interference in a residential installation. This equipment generates, uses and can radiate radio frequency energy and, if not installed and used in accordance with the instructions, may cause harmful interference to radio communications. However, there is no guarantee that interference will not occur in a particular installation. If this equipment does cause harmful interference to radio or television reception, which can be determined by turning the equipment off and on, the user is encouraged to try to correct the interference by one or more of the following measures:

- Reorient or relocate the receiving antenna.
- Increase the separation between the equipment and receiver.
- Connect the equipment into an outlet on a circuit different from that to which the receiver is connected.
- Consult the dealer or an experienced radio/TV technician for help.

Caution: Any changes or modifications to this device not explicitly approved by manufacturer could void your authority to operate this equipment.

This device complies with part 15 of the FCC Rules. Operation is subject to the following two conditions:

(1) This device may not cause harmful interference, and (2) this device must accept any interference received, including interference that may cause undesired operation.

This equipment complies with FCC radiation exposure limits set forth for an uncontrolled environment. This equipment should be installed and operated with minimum distance 0cm between the radiator and your body.