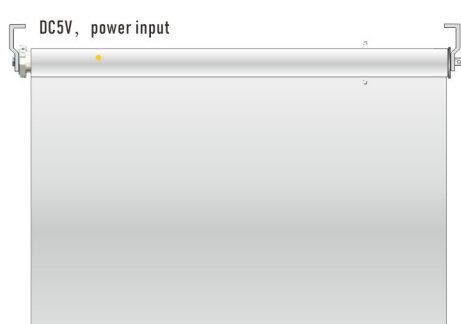


Low power battery with built-in Zigbee Motor



MOTOR FEATURES

- Energy saving design, powered by large capacity Li-ion battery;
- Motor can do both RF remote control and APP control via Zigbee communication protocol
- Easy operation intelligent motor; programming can be set with either remote or smart phone APP.
- Patented smooth and quiet design; Soft start and soft stop; Running noise level lower to 35dB.
- Automatic low battery buzzer warning remind you to charge motor.
- Motor can set 6 limit, including top/bottom limits and 4 favorite intermediate limits.
- Various user friendly features on APP setting.

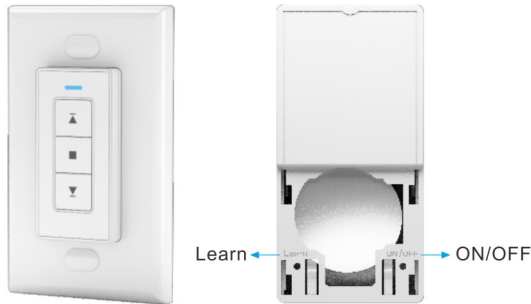
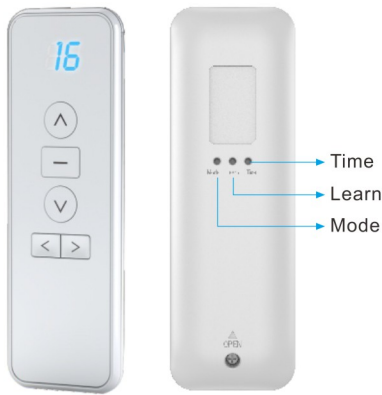


POWER SOURCE & CHARGING

- Built-in Li-ion battery supply. Recharged using an external charging kit include a charger block and one USB-C charging cable.
- Motor one full charge ca be used for 4-6 months vary with shade use frequency.
- Charging time is 6-8 hours;

Tips:
1.For longer life service of the motorized shade. we suggest all li-ion battery motor need to charge battery every 6 months to avoid battery over discharge.
2.Please turn the switch to "1" on the motor head before charging
3.Please charge the motor for around 6 hours until see the green light before first use

REMOTE LAYOUT



RCM-25-5V-1N/30-ZT-3S

RCM-25-5V-1.8N/30-ZT-3S

RCM-28-5V-1.8N/30-ZT-3S



Duct outer dimensions (W x H x D):
477.2 x 42.75 x 47.7mm
Inner tube dimensions: 25 mm



Duct outer dimensions (W x H x D):
477.2 x 42.75 x 47.7mm
Inner tube dimensions: 25 mm



Duct outer dimensions (W x H x D):
541.7 x 42.75 x 47.7mm
Inner tube dimensions: 28 mm

Operation Instruction

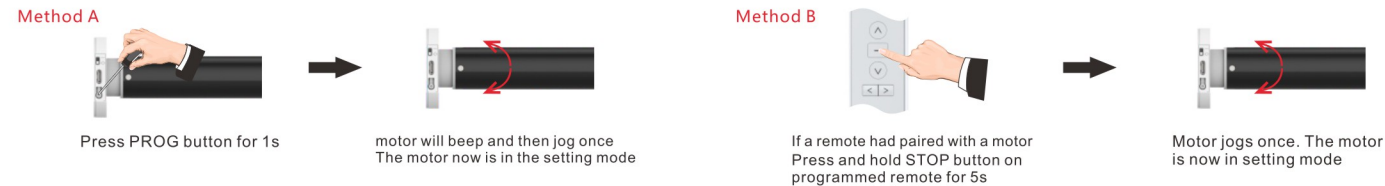
1.Power ON/OFF

* After switching off power, the motor will not be able to receive remote signals.

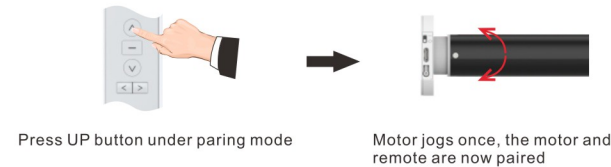


2.Programming Preparation

* If there is no action in 10 seconds, the motor will exit programming automatically.



3.Paring remote

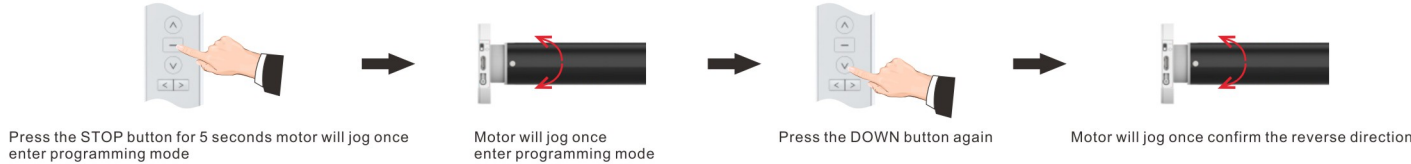


4.Change running mode (two modes)

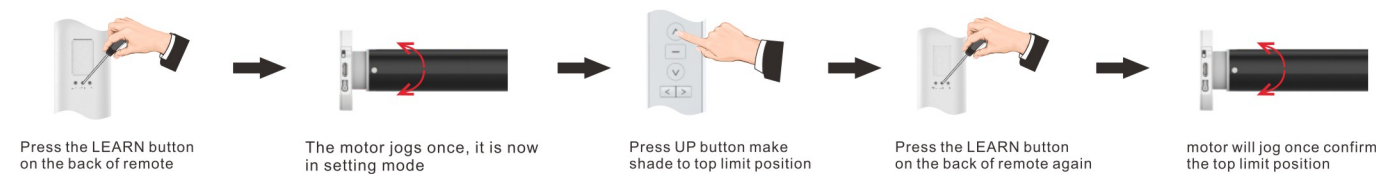
(Continuously mode: when you hit the up/down button, motor will immediately run to next limit)
(Jogging move mode: when you hit the up/down button less than 1", motor only jog, keep press for more than 1", motor will keep running)



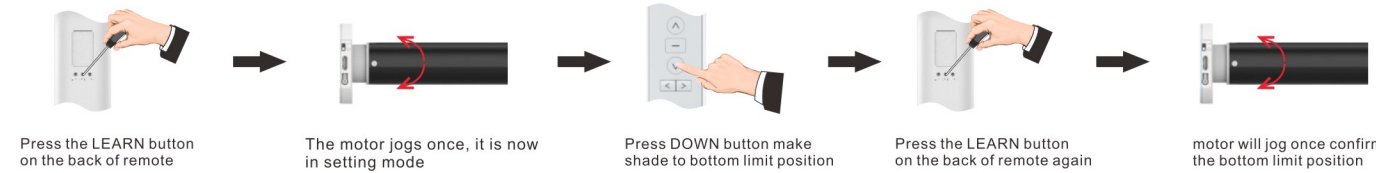
5.Change direction



6.TOP limit setting

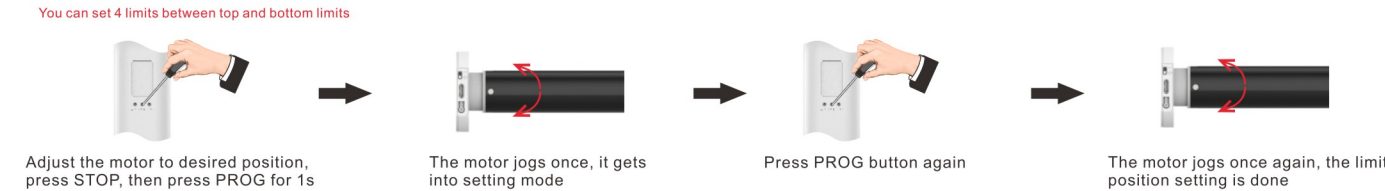


7.Bottom limit setting

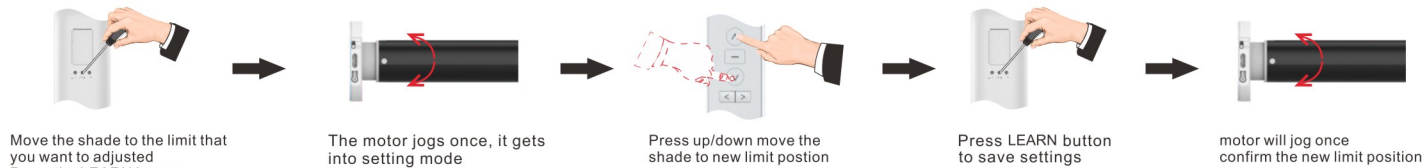


8. Other limit position setting

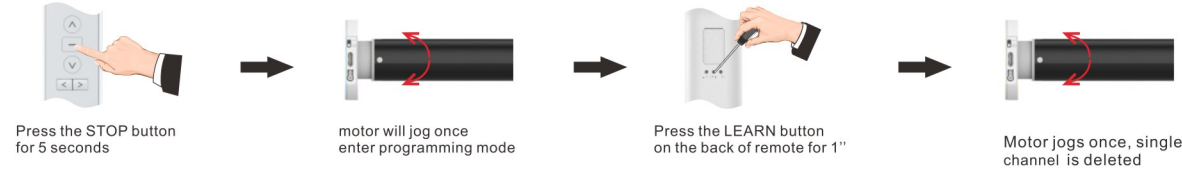
* If there's no any action within 30's,the motor will exit from limit position preparation automatically



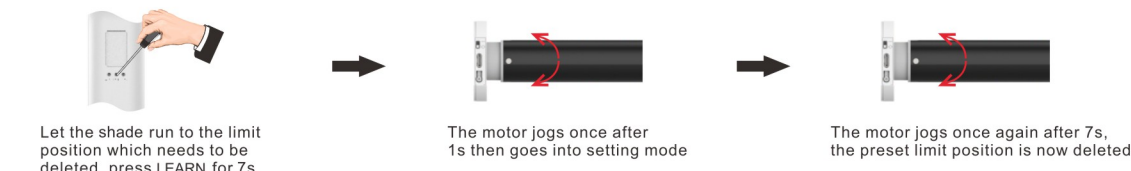
9.Limit position fine-tuning



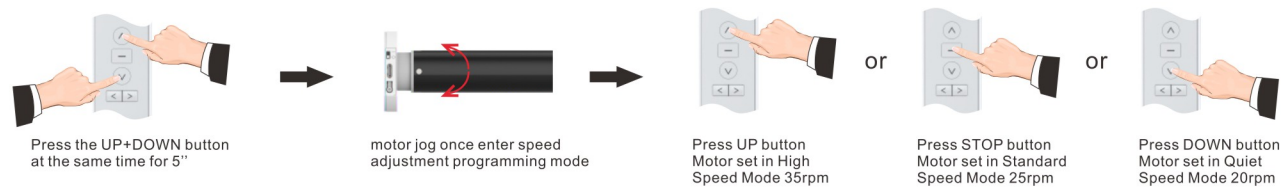
10.Delete Single Channel program (if you want to remove one channel's setting, pls do as follow)



11.Delete the limit position

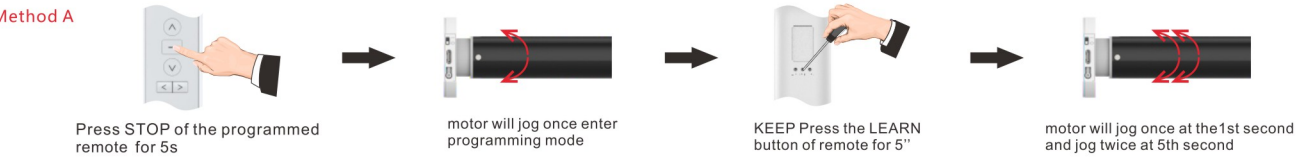


12.Motor Speed Adjustment



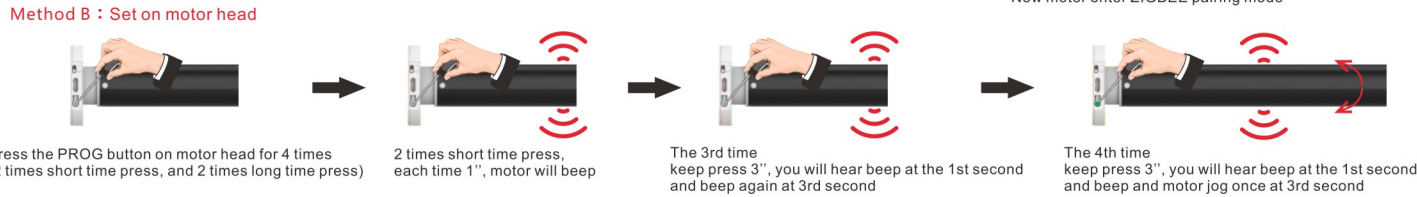
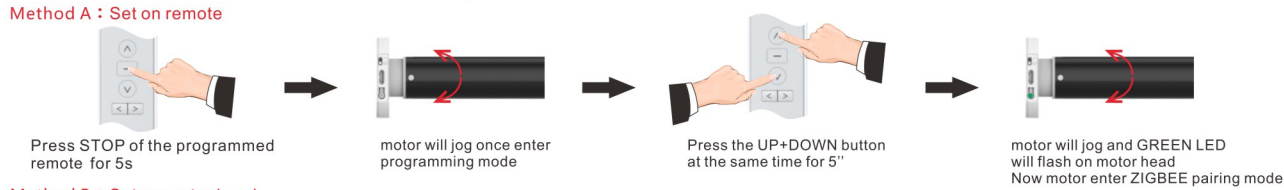
13.Reset motor * Make sure the interval between every actions less than 1s

(Two methods, one on the remote, another one on motor head)



14.Set motor to ZIGBEE pairing mode * Make sure the interval between every actions less than 1s

(Two methods, one is use remote, another is set on motorhead)



Supplemental Instruction

- a. Max. 6 limit stop positions. (Upper limit/ Lower limit and 4 intermediate limit positions)
 - b. When the first limit position is the up limit position, all other limit positions can only below this position; the same thing, when the first limit position is the down limit position, all other limit positions can only be set above this position. can't be delete
 - c. Every limit position can be fine-turned or deleted separately (the first limit position can only be fine-tuned but can't be deleted separately. It can be deleted when delete all memories)
 - d. Under the jog mode, short press the up or down button, motor jogs once. Press the up or down button for more than 1s, and the engine moves to the limit positions.
 - e. Under the continuous move mode, quickly press the up or down button twice on the transmitter, and the motor will go directly to the up or down limit stop position without stopping at the middle limit position.
 - f. The light is red when charging and will turn to green when fully charged.
 - g. The motor will stop when the voltage is under 6.8V, and start working at 6.9V; motor moves under 7.0V, the motor will beep continuously(the working voltage)
- Battery shortage alarm:
The motor will start to beep when the battery capacity is below 7.0V, yet it is still in continuous move mode.
The motor will step into jog mode and continuously beep when the battery capacity is below 6.8V, which means you must charge the motor now.
- h. The motor needs to unlock in a different direction when it is blocked; Need to change the jog mentioned direction if the direction is the same as the jog direction. When the motor is blocked, it needs to be unlocked in reverse, and if it is in the same direction as the shaking, change the direction of the shaking prompt
 - i. The charge cable needs to have the data transfer function.
Motor charging needs to use TYPE-C charging cable with data transmission function.

Trouble Shooting

Item	Problem	Matter	Shooting
1	The motor doesn't work and no any move	A. Power is cut off B. Shortage voltage protection C.Incorrect installation leads to motor sticking	A. Switch it on by button B. Start the motor after charging it for 6 hours C.Check and make sure all parts are installed properly
2	The motor stops suddenly during operation	A.Shortage voltage protection B.Protect the motor when encounter obstacle	A.The motor will resume to work after being charged B.Check if there is something stuck or overloading

Notice:

This device contains licence-exempt transmitter(s) receiver(s) that comply with Innovation, Science and Economic Development (ISED) Canada's licence-exempt RSS(s). "

Operation is subjected to the following two conditions.

- (1) this device may not cause harmful interference, and
 - (2) this device must accept any interference received, including interference that may cause undesired operation.
- Changes or modifications not expressly approved by the party responsible for compliance could void your authority to operate the equipment.

This equipment complies with FCC radiation exposure limits set forth for an uncontrolled environment. The distance between user and products should be no less than 20cm.This equipment has been tested and found to comply with the limits for a Class B digital device, pursuant to Part 15 of the FCC Rules. These limits are designed to provide reasonable protection against harmful interference in a residential installation. This equipment generates, uses and can radiate radio frequency energy and, if not installed and used in accordance with the instructions, may cause harmful interference to radio communications.

However, there is no guarantee that interference will not occur in a particular installation. If this equipment does cause harmful interference to radio or television reception, which can be determined by tuming the equipment off and on, the user is encouraged to try to correct the interference by one or more of the following measures.

- Reorient or relocate the receiving antenna.
- Increase the separation between the equipment and receiver.
- Connect the equipment into an outlet on a circuit different from that to which the receiver is connected.
- Consult the dealer or an experienced radioTV technician for help.

This device contains licence-exempt transmitter(s)receiver(s) that comply with innovation, Science and Economic Development (ISED) Canada's licence-exempt RSS(s). Operation is subject to the following two conditions: (1) this device may not cause interference, and (2) this device must accept any interference, including interference that may cause undesired operation of the device.
The device has been evaluated to meet general RF exposure requirement.
The distance between user and products should be no less than 20cm.

Cet appareil contient des émetteurs:récepteurs exemptés de licence qui sont conformes aux flux RSS exempts de licence du Canada pour l'innovation, la Science et le développement économique (ISDE).Le fonctionnement est soumis aux deux conditions suivantes: (1) ce dispositif ne peut pas causer d'interference, et (2) ce dispositif doit accepter toute interference, y compris les interferences pouvant causer un fonctionnement indésirable du dispositif,
L'appareil a été évalué pour répondre aux exigences générales d'exposition aux RF

la distance entre l'utilisateur et les produits devraient tre au moins 20 cm.

Zigbee Motor APP Setting Instruction Scan to download “Smart Life” APP



Smart Life - Smart Living (4+)

Smart Living
Volcano Technology Limited

#46 in Lifestyle

★★★★★ 4.7 • 265.2K Ratings

Free · Offers In-App Purchases




Apple Store(iOS)



Google Play(Android)

Add Mini-Multi Gateway -Hub to Smart Life APP

(To achieve remote access control shades outside your home, you must need to buy a Bluetooth Gateway Hub)



1. Power on Mini-Multi gateway hub


2. there are two indicator on the hub;

---when blue LED keep lighting, red LED slowly blinking, mini hub is in pairing mode

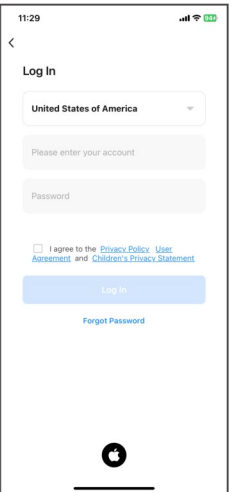
---After you successfully add the mini hub to Smart Life APP, blue and red LED will keep lighting on

you can keep holding reset button around 30 seconds; it will turns to blue light is on, red blinking; if you can't see that signal, keep pressing the reset button for another 10 seconds; once the hub reset, the hub will remove from your APP and

there are two methods to add the mini hub; 1. auto scan adding; 2.manually adding



Register and login “Smart Life” APP



Log In

United States of America

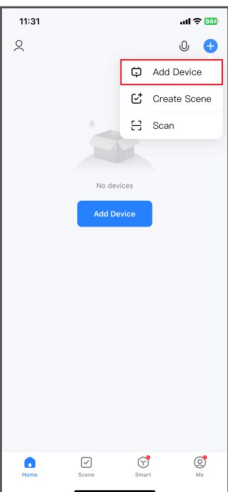
Please enter your account

Password

☐ I agree to the [Privacy Policy](#), [User Agreement](#) and [Children's Privacy Statement](#)

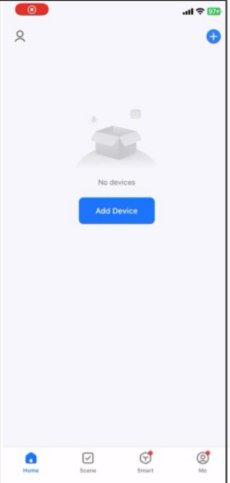
Log In

[Forgot Password](#)

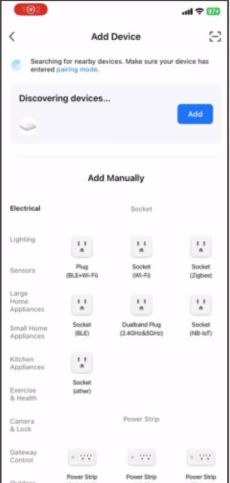


After you choose “Add Device”, now you put motor in Bluetooth pairing mode.

Please refer to below instruction.



“Add device” , the APP will scan devices nearby. When the APP discover the hub, choose “Add”



Add Manually

Electrical

Lighting

Plug (E14/E27)

Socket (E14)

Socket (E27)

Socket (E14/E27)

Large Home Appliances

Small Home Appliances

Socket (E14)

Outlet Plug (E14/E27)

Socket (E14/E27)

Kitchen Appliances

Socket (E14)

Power Strip


Camera & Lock

Outdoor

Power Strip (E14/E27)

Power Strip (E14/E27)

Power Strip (E14/E27)



Enter Wi-Fi Information

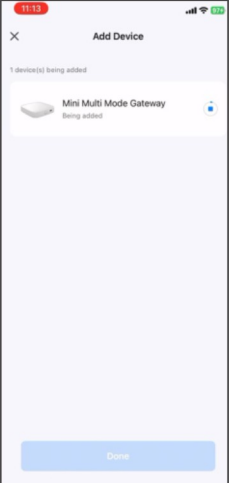
Choose Wi-Fi and enter password

2.4G WiFi network

WiFi password

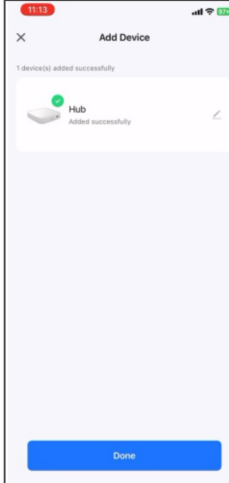
Tips:

The hub does not support 5G WiFi, please use 2.4G WiFi to connect the hub to network



Mini Multi Mode Gateway

Being added

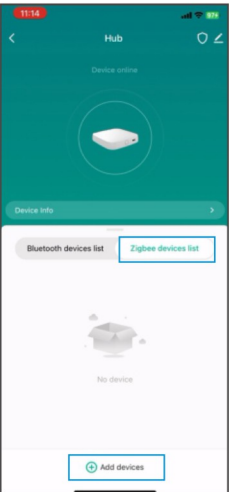


Hub

Added successfully

Choose 2.4G WiFi and input WiFi password direct the hub to networkClick “Next”, when you see “added successfully”, the hub now is added to APP

Add Zigbee motor to gateway hub




in the hub control menu choose “Zigbee device list”, click “Add devices”

Next step tips:

Send motor to Zigbee pairing mode

Refer to follow operation

Set motor to Zigbee pairing mode



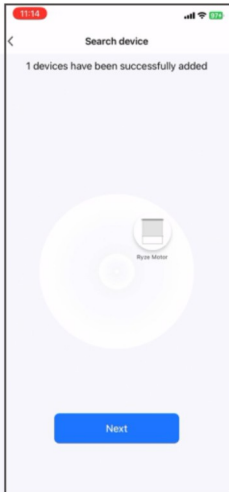
1. press 1* : motor response

2. press 1* : motor response

3. press 3* : motor response

4. press 3* : motor response

put motor to zigbee pairing mode (refer to above)




Search device

1 devices have been successfully added

Next

when the hub discover zigbee motor in range, click “NEXT”



Add Device

1 device(s) added successfully

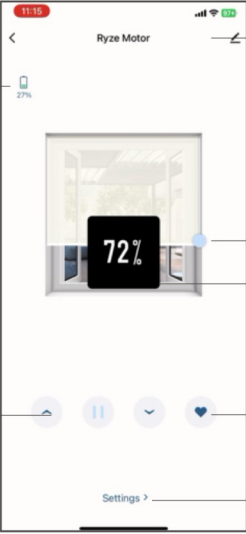
Ryze Motor

Added successfully

Done

when you see motor is “added successfully”, click “Done” now the motor is added to the hub.

APP control functions overview



Ryze Motor

Real-time motor battery level feedback (Low battery reminder (bi-directional))

72%

Up Stop Down

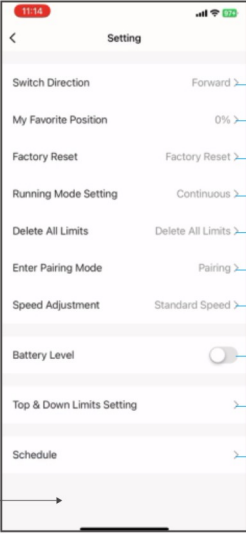
my favorite position

Shade setting functions

Name the shade

Slide this button to adjust the shade to any position

Real-time shade stop position feedback (bi-directional)



Setting

Switch Direction: Forward

My Favorite Position: 0%

Factory Reset: Factory Reset

Running Mode Setting: Continuous

Delete All Limits: Delete All Limits

Enter Pairing Mode: Pairing

Speed Adjustment: Standard Speed

Battery Level: [Toggle]

Top & Down Limits Setting

Schedule

Switch motor running direction

Choose favorite position % percentage

Restore to factory default mode, delete all settings

Switch motor running mode: Continuous/Jog

Delete all the limits settings

Send motor to “copy new RF remote pairing” mode

Adjust speed: “Quiet/Standard/Fast” 3 speedmodes

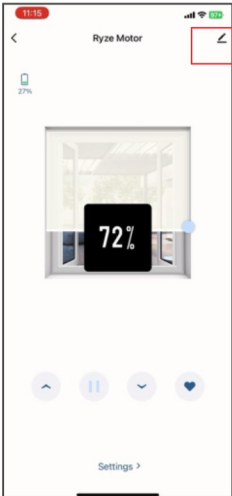
Turn on this button, APP will detect battery level

Set Top/Bottom limits

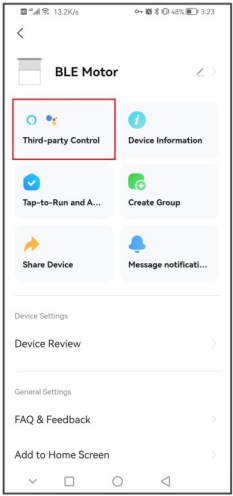
Schedule to “Timer” setting

4.

Third Party Control Instruction--Alexa & Google Assistant



Access to shade control menu
Tap red box as above

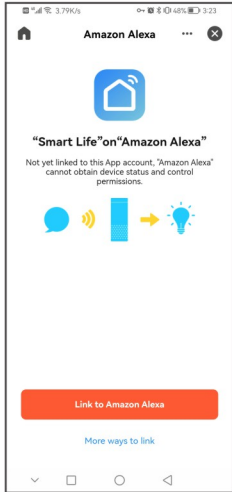


Choose "Third-party
Control"

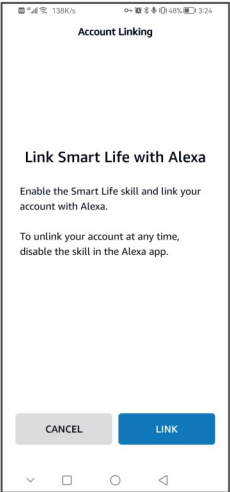
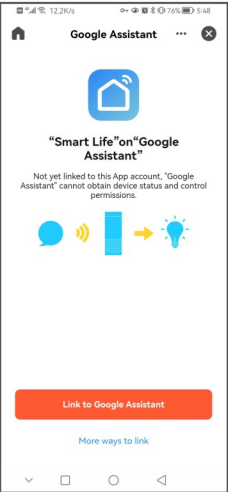


There will be two options
Alexa & Google Assistant

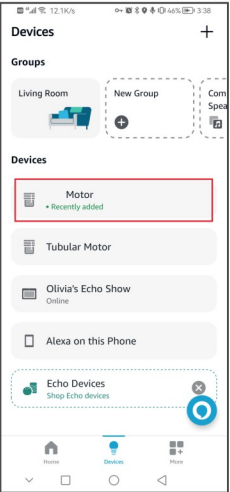
Tips: Alexa voice command
Alexa, open "shade one"
Alexa, close "shade one"
Alexa, set "shade one" to 50%



Choose
"Link to Amazon Alexa"
"Link to Google Assistant"



Choose "Link"
then it will enable your Smart Life account to third
parties account



Now you can discover
your devices on third
parties APP