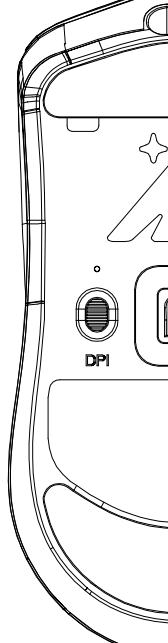


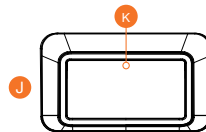
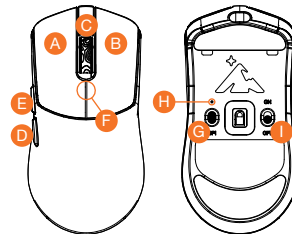
Higround Wireless Dongle V1
HVIN: HGDONGLE1

Higround Wireless Mouse V1
HVIN: HGMOUSE1, HGMOUSE2, HGMOUSE3
User Manual



Overview

- A. Left Mouse Button
- B. Right Mouse Button
- C. Scroll Wheel
- D. Side button 1
- E. Side button 2
- F. Top Indicator LED
- G. DPI Button
- H. DPI Indicator LED
- I. Power Switch
- J. Wireless Dongle
- K. Dongle Indicator LED
- L. USB Cable



Setup

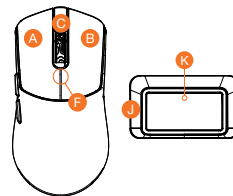
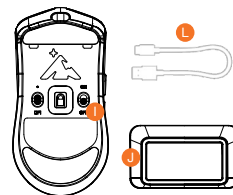
Initial Setup

Connect the **L** USB cable to the **J** Wireless Dongle and your PC. Turn ON the mouse with the **I** Power Switch

Pairing

The mouse and wireless dongle are already paired out of box. Should you need to re-pair them, follow these steps:

1. Unplug **J** Wireless Dongle.
2. With the mouse powered on, press and hold **A** LMB, **B** RMB and **C** Scroll Wheel together for 3-5 seconds. The **F** Top Indicator LED will start blinking.
3. Plug in the **J** Wireless Dongle.
4. **F** and **K** LED will turn Green when paired.



Usage & Battery

Connection Status

The **K** Dongle Indicator LED will show the connection status of mouse and **J** Wireless Dongle.

Green - Connected
Red - Disconnected / Sleep Mode
Flashing Blue - Connecting

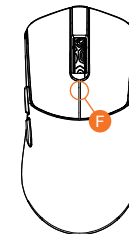
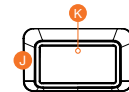
Battery Level & Charging

While in use, the mouse **F** Top Indicator LED denotes the battery level.

100% - 75% - Green
74% - 50% - Blue
49% - ?% - Orange
?% - Red
Flashing Red?

To charge, plug in **L** USB Cable to mouse.
F Top Indicator LED shows status.

Slow Blink Green - Charging
Static Green - Fully Charged

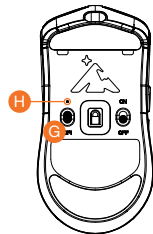


Settings

DPI Adjustments

To change the DPI, press **G** DPI Button. The **H** DPI Indicator LED will light up:

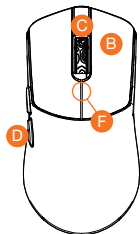
400 DPI - Red
800 DPI - Green
1600 DPI - Blue
3200 DPI - Orange
6400 DPI - Purple



LOD - Lift Off Distance

To adjust the LOD, press and hold **B** RMB, **C** Scroll Wheel, and **D** Side Button 1 together for 3 seconds. The **F** Top Indicator LED will flash:

1mm - Cyan
2mm - Purple



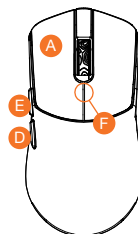
Contact Support: <https://higround.co/pages/>

Settings (Continued)

Motion Sync

To enable / disable motion sync, press and hold **A** LMB **D** Side Button 1 and **E** Side Button 2 together for 3 seconds. The **F** Top Indicator LED will flash:

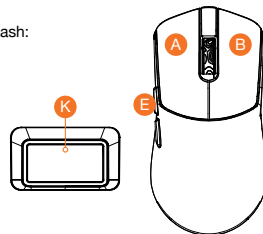
On - Green
Off - Red



Polling Rate

To change the Polling Rate, press **A** LMB **B** RMB and **E** Side Button 2 at the same time and hold for 3 seconds. The **K** Dongle Indicator LED will flash:

500 Hz - Red
1000 Hz - Green
2000 Hz - Blue
4000 Hz - Orange



FCC Statement

This equipment has been tested and found to comply with the limits for a Class B digital device, pursuant to Part 15 of the FCC Rules. These limits are designed to provide reasonable protection against harmful interference in a residential installation. This equipment generates uses and can radiate radio frequency energy and, if not installed and used in accordance with the instructions, may cause harmful interference to radio communications. However, there is no guarantee that interference will not occur in a particular installation. If this equipment does cause harmful interference to radio or television reception, which can be determined by turning the equipment off and on, the user is encouraged to try to correct the interference by one or more of the following measures:

- Reorient or relocate the receiving antenna.
 - Increase the separation between the equipment and receiver.
 - Connect the equipment into an outlet on a circuit different from that to which the receiver is connected.
- Consult the dealer or an experienced radio/TV technician for help.

This device complies with part 15 of the FCC Rules. Operation is subject to the following two conditions: (1) This device may not cause harmful interference, and (2) this device must accept any interference received, including interference that may cause undesired operation.

Changes or modifications not expressly approved by the party responsible for compliance could void the user's authority to operate the equipment.

- English:

This device complies with Industry Canada licence-exempt RSS standard(s).

Operation is subject to the following two conditions: (1) This device may not cause interference, and (2) This device must accept any interference, including interference that may cause undesired operation of the device.

- French:

Le présent appareil est conforme aux CNR d'Industrie Canada applicables aux appareils radio exempts de licence. L'exploitation est autorisée aux deux conditions suivantes:

(1) l'appareil ne doit pas produire de brouillage, et

(2) l'utilisateur de l'appareil doit accepter tout brouillage radio électrique subi, même si le brouillage est susceptible d'en compromettre le fonctionnement.