

说明书



按下按钮启动，
长按2秒后将关闭。

使用1粒7.4V充电锂电池
(包括)

(包括)

(包括)

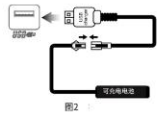


图2



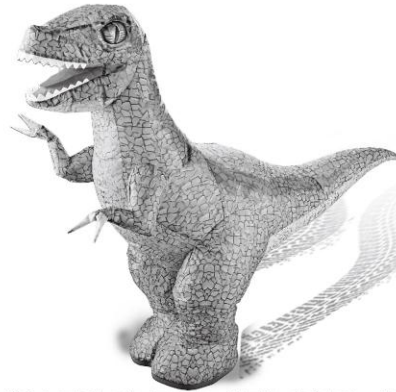
使用2粒“AA”电池
(不包括)



说明书



INFLATABLE DINOSAUR 遥控充气恐龙



警告！不适合6岁以下儿童。小零件 - 窒息危险。注意！操作前请先阅读说明书。“必须保留说明书和包装盒，因为其中包含重要信息”。电池警告：

1. 不可充电电池不得充电。
2. 只有在成人监护下才能充电可充电电池。
3. 不得混合使用不同类型的电池或新旧电池。
4. 电池必须按正确的极性 (+和-) 插入。
5. 用完的电池必须从玩具中取出。
6. 供电端子不得短路。

希望这个翻译能够满足你的需求。如果你还有其他要求或需要进一步的帮助，请随时告诉我。

Instructions



PRESS THE BUTTON TO START,
AND IT WILL SHUT DOWN AFTER
HOLDING THE BUTTON FOR 2 SECONDS.

Use 1x 7.4V
Li-Ion Batteries.
(INCLUDED)

(INCLUDED)

(INCLUDED)

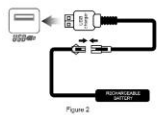
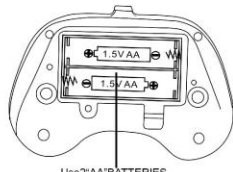
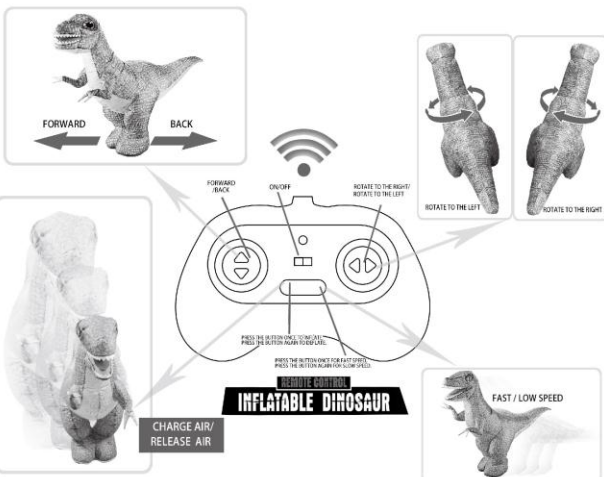


Figure 2



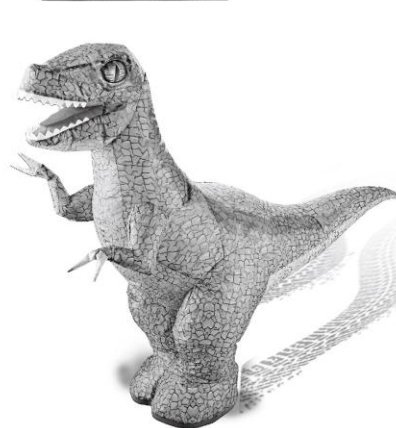
Use 2 "AA" BATTERIES
(NOT INCLUDED)



Instructions



INFLATABLE DINOSAUR 遥控充气恐龙



WARNING! Not suitable for children under 6 years. Small Parts - Choking Hazard. Attention! Read instructions first before operation. "Instruction sheet and packaging must be retained since it contains important information"

Battery warnings:

1. Non-rechargeable batteries are not to be recharged.
2. Rechargeable batteries are only to be charged under adult supervision.
3. Different types of batteries or new and used batteries are not to be mixed.
4. Batteries are to be inserted with the correct polarity (+ and -).
5. Exhausted batteries are to be removed from the toy.
6. The supply terminals are not to be short-circuited.

This device complies with part 15 of the FCC Rules. Operation is subject to the following two conditions: (1) This device may not cause harmful interference, and (2) this device must accept any interference received, including interference that may cause undesired operation.

Any Changes or modifications not expressly approved by the party responsible for compliance could void the user's authority to operate the equipment.

Note: This equipment has been tested and found to comply with the limits for a Class B digital device, pursuant to part 15 of the FCC Rules. These limits are designed to provide reasonable protection against harmful interference in a residential installation. This equipment generates uses and can radiate radio frequency energy and, if not installed and used in accordance with the instructions, may cause harmful interference to radio communications. However, there is no guarantee that interference will not occur in a particular installation. If this equipment does cause harmful interference to radio or television reception, which can be determined by turning the equipment off and on, the user is encouraged to try to correct the interference by one or more of the following measures:

- Reorient or relocate the receiving antenna.
- Increase the separation between the equipment and receiver.
- Connect the equipment into an outlet on a circuit different from that to which the receiver is connected.
- Consult the dealer or an experienced radio/TV technician for help.

FCC Radiation Exposure statement

The device has been evaluatec to meel general RF exposure requirement. The device can be used in porlable exposure condition without restriction.