

User Manual

FOR IPHONES

**Car Scanner
B03**

**To protect your car and OBDII,
turn off your car and unplug OBDII**

1. How to use

(1) plug -in

Step1 When the engine stop, plug ELM327 into your OBDII port on the vehicle, the port usually can be found from the below chart (usually A).



2. Application Download

iPhone: search the APP name is "Car Scanner" in Apple Store, download and install

car scanner



Cancel



Car Scanner ELM OBD2

The best OBD2 diagnostic tool!



★★★★★ 516



3. How to connect

(1) Open "Car Scanner" software, Click on Setup configurator "OBDII ELM327", Then select Bluetooth LE (4.0+)

Car Scanner



Dashboard



Live data



All sensors



Diagnostic
trouble codes



Freeze frame



Noncontinuous
Monitors



Upgrade to Car
Scanner Pro



我的车辆



Settings



Statistics



ECU identifiers



Data recording



Acceleration tests



Emission tests

< Car Scanner Settings



My cars



Adapter OBDII ELM327

Bluetooth LE (4.0): OBDII



Connection profile

Acura OBD-II / EOBD



< Settings Adapter OBDII ELM327

Choose connection type:

Wi-Fi

Bluetooth LE (4.0+)



Bluetooth MFi

OBDLink MX+, vLinker FS

(2) Select and click "Device Name" then Select "OBDII" to connect

< Settings Adapter OBDII ELM327

Choose connection type:

Wi-Fi

Bluetooth LE (4.0+)



Bluetooth MFi

OBDLink MX+, vLinker FS

Select device

Device name:

OBDII

Automatically search for Bluetooth LE device with the same name if connection failed (sometimes iOS randomizes device ID and you have to reselect it)



< Cancel

Select device



OBDII

f742005f-2876-662b-1918-d1fde9a26bb6

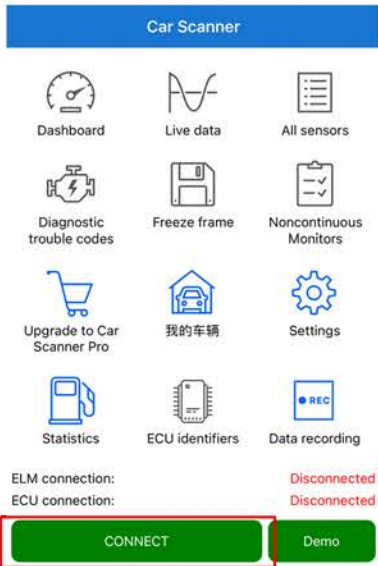


WOECAR

620335e5-4f31-66ff-1721-1cd8ad095e5c

Refresh

(3) Return to the main page and click "CONNECT" Wait to connect the car ECU



(4) Connect succeed

Car Scanner



Dashboard



Live data



All sensors



Diagnostic
trouble codes



Freeze frame



Noncontinuous
Monitors



Upgrade to Car
Scanner Pro



My cars



Settings



Statistics



ECU identifiers



Data recording



Acceleration tests



Emission tests

OBD2 protocol:

ISO 14230-4 KWP (fast baud init, 10.4 kbaud)

VIN:

1G1JC5444R7252367

ECU name:

ECM-Engine Control

Calibration Id:

JMB36761500JMB4787261111

ELM connection:

Connected

ECU connection:

Connected

DISCONNECT

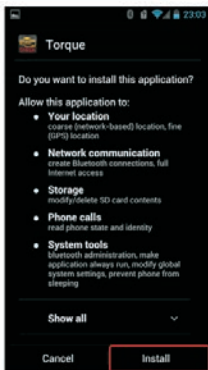
6.4.1 Android Connection

1). Install Android Software

a) Scan the QR code and tap For Android to download Torque to your phone



b) Install Software

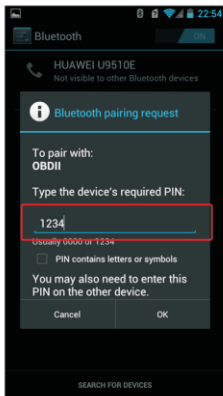


2). Connection OBDII

a) Search ELM327 OBDII Bluetooth



b) Enter the password "1234"

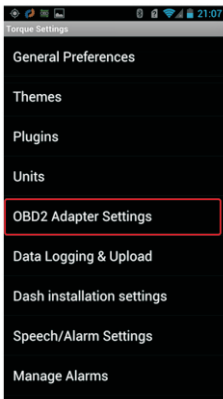
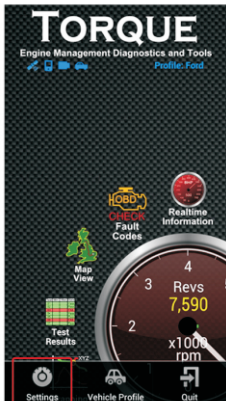


c) Connection Success

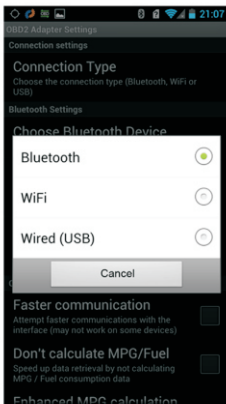


3). Run Software

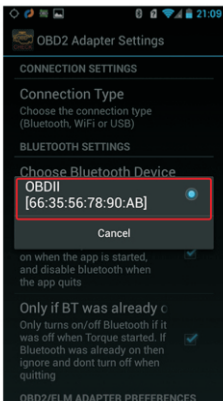
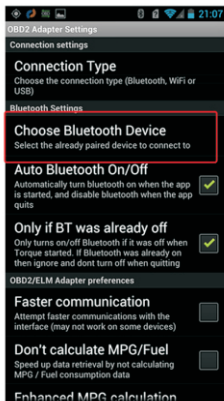
a) Click Menu button Setting Bluetooth connection



b) Choose Connection Type is Bluetooth



c) Choose Bluetooth Device is OBDII



Exit Torque, and re-run the software. Successful connection



FCC Statement

Changes or modifications not expressly approved by the party responsible for compliance could void the user's authority to operate the equipment.

This equipment has been tested and found to comply with the limits for a Class B digital device, pursuant to Part 15 of the FCC Rules. These limits are designed to provide reasonable protection against harmful interference in a residential installation. This equipment generates uses and can radiate radio frequency energy and, if not installed and used in accordance with the instructions, may cause harmful interference to radio communications.

However, there is no guarantee that interference will not occur in a particular installation. If this equipment does cause harmful interference to radio or television reception, which can be determined by turning the equipment off and on, the user is encouraged to try to correct the interference by one or more of the following measures:

- Reorient or relocate the receiving antenna.
- Increase the separation between the equipment and receiver.
- Connect the equipment into an outlet on a circuit different from that to which the receiver is connected.
- Consult the dealer or an experienced radio/TV technician for help

This device complies with part 15 of the FCC rules. Operation is subject to the following two conditions (1) this device may not cause harmful interference, and (2) this device must accept any interference received, including interference that may cause undesired operation.

This equipment complies with FCC radiation exposure limits set forth for an uncontrolled environment. This equipment should be installed and operated with minimum distance 20cm between the radiator & your body.