

# Product Name: CCTV CAMERA

## Model: Icam365-Cam

### Product features:

- ※ The camera adopts precision machining technology, with good sealing performance and waterproof grade of IP65, suitable for outdoor use;
- ※ Adopting high-definition photosensitive chips, image resolution: 1080P, 2 million pixels, clear and delicate image quality, and good color reproduction;
- ※ Dual screen dual channel synchronous preview, simultaneously viewing the panoramic view, zooming in on details, and mastering the overall situation;
- ※ The camera is equipped with an ICR dual filter switcher, and the night vision effect is available in color and black and white images. It is equipped with 15 high-performance dual core LED lights, which can effectively improve Night vision clarity;
- ※ The camera is equipped with a high-energy WIFI module and a professionally customized WIFI antenna, which enhances the stability of receiving WIFI signals, ensures long distances, and prevents disconnection;
- ※ The camera has a built-in motion sensing alarm. After setting, if a moving object is detected, the camera can immediately push the alarm information to the mobile app; Can achieve more effective pre prevention work;
- ※ WiFi intelligent pan tilt camera with image changes, object movement detection alarm, timely response from mobile app, can be viewed anytime, anywhere;
- ※ Equipped with a built-in microphone and speaker, users can monitor through the mobile app and achieve real-time remote video and voice intercom; AI intelligent tracking and shooting; The cloud table tennis machine rotates horizontally at an angle of 355 ° and vertically at an angle of 90 °, and is monitored in all directions without dead angles. Using high-performance DSP encoding and decoding chips, the host can cope with various complex situations and respond quickly;
- ※ Adopting the new version of mobile app with excellent user experience, good human-machine interaction, more in line with the usage habits of end customers; Multiple people can watch simultaneously.
- ※ The camera supports a maximum of 128GB, TF card storage, continuous recording, and can be set to automatic coverage. The alarm recording video can be viewed on the mobile app; Produced by professional manufacturing factories, our products have passed multiple domestic and international certifications, ensuring safety, peace of mind, and peace of mind;

### Product application scope:

This product does not require wiring, is maintenance free, and is suitable for use in various outdoor environments, including villas, residential areas, courtyards, fish ponds, orchards, vegetable gardens, outdoor pet houses, and more. Sensitive mobile object detection alarm, in the WIFI environment, can remotely wake up the device at any time, watch videos, and view recordings.

**Main parameters:**

Operating system	Linux
Image sensor	2 million pixel CMOS, dual screen simultaneous preview
Minimum illumination	Color 0.6 lux@f1.2
Day and night mode	Ir-cut Double Filter Automatic switching,LED light start,Color and color to black options available
Lens	3.6MM million HD lens
Video compression	H.264, support dual code flow
Video mode	HD/SD
Maximum image size	Main stream 1920x1080; sub-code stream: 640x480;
Resolution	1080P: 2MP
Frame rate	25 Frames
Audio coding	G726, G711, AAC, MP3 format, 8K sampling rate, support echo cancellation function
Audio input	Built-in mic
Audio output	Internal speaker
Real Standby	Built-in MCU, support true standby function, support infrared, key, Gpio alarm wake-up main system; system standby power consumption 60uA
Storage Features	Support Micro TF card storage, Max 128G
Intelligent Alarm	Mobile intelligent sensing alarm, AI intelligent tracking and shooting
Infrared lamp	15 dual core LED lights with a night vision distance of approximately 25 meters
Rotation angle	Horizontal angle: 355 ° Vertical angle: 90 °
Application APP	Icam365
Input voltage and current	DC 12V, 2A
work environment	-10 ° C to 60 ° C/20% to 85% (non condensing)

# Product Manual

Scan the QR code above to download the APP  
and complete the installation

Dear users, thank you for using the company's products, please read the operation manual carefully before using the company's products and save this manual for subsequent production examinations

---

## 1. Register and log in to the APP

1.1 Open the APP (as shown in Figure 1)

1.2 Click to register (as shown in Figure 2)

1.3 Follow the prompts to fill in the registration information(as shown in Figure 3)  
to complete the registration and login to the APP  
(as shown in Figure 4)

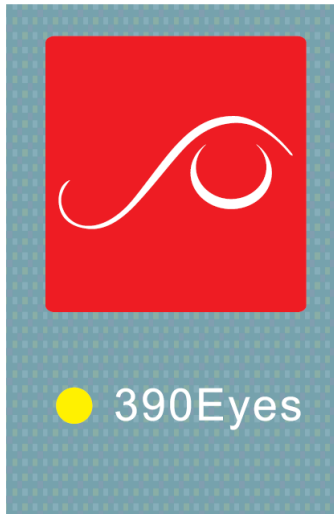


figure 1



figure 2

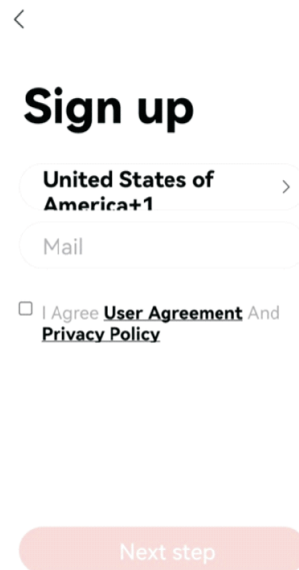


figure 3

---

## 2. Add a camera

### Method 1: Scan the code to add

- 1.1 Click the "+" sign at the top right of the home page (as shown in Figure 4)
- 1.2 Click the scan button in the upper right corner (as shown in Figure 5)
- 1.3 Scan the "PID QR code" on the camera (as shown in Figure 6)
- 1.4 Follow-up steps to be added, please ask the production test APP to prompt



figure 4

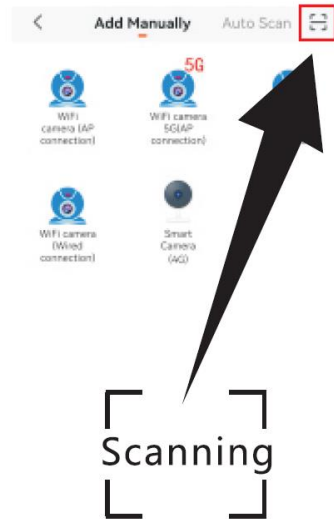


figure 5



figure 6

---

---

## Method 2: WiFi Camera (AP connection)

2.1 Click the "+" sign at the top right of the home page (as shown in Figure 7)

2.2 Click on WiFi Camera (AP connection) (as shown in Figure 8)

2.3 After entering the correct WiFi password, click "Next" (as shown in Figure 9)

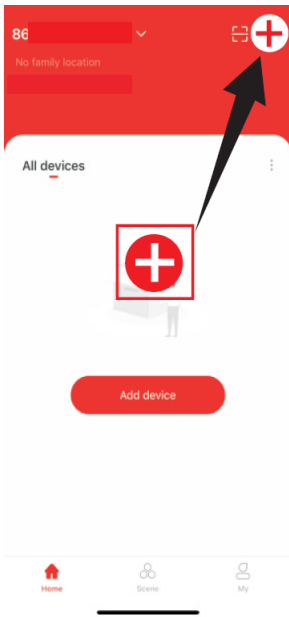


figure7

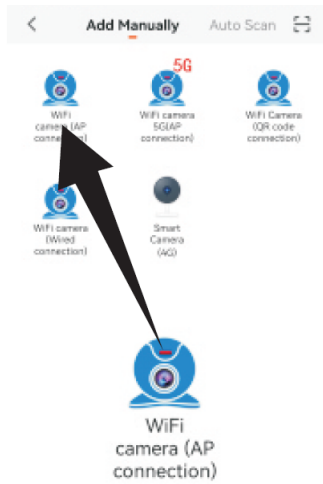


figure8

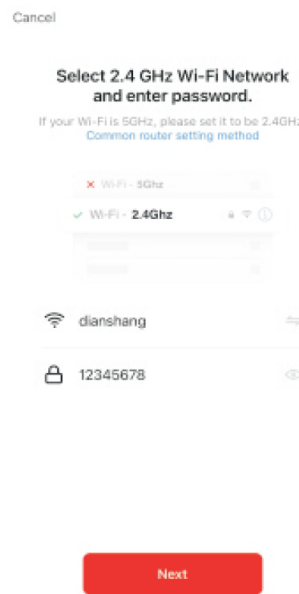


figure9

---

- 2.4 Power on the camera wait about 30s and click "Next" (as shown in Figure 10)
- 2.5 After heard "wait for connecting" Click next , if not , please reset the camera until you hear the prompt.(figure11)
- 2.6 Click "Go to Connect" (as shown in Figure 12)



figure10



figure11

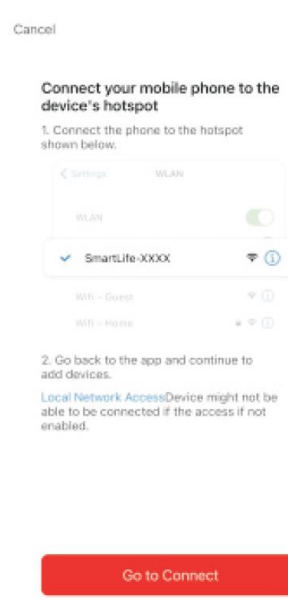


figure12

2.7 Connect the mobile phone WiFi which named "SmartLife" and return back to the APP (as shown in Figure 13)

2.8 The device is being added (as shown in Figure 14)

2.9 After jumping out of the successful addition page, click the "Done" button on the upper right to complete the addition (as shown in Figure 15)

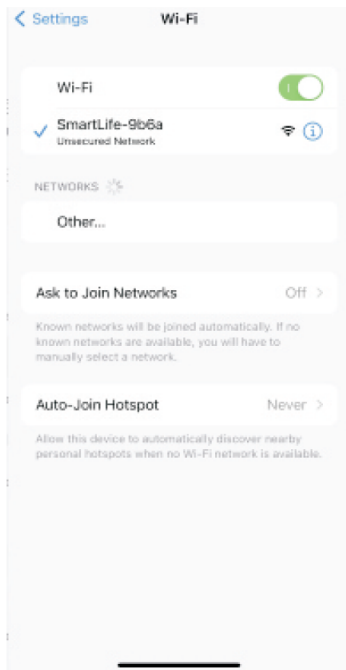


figure13

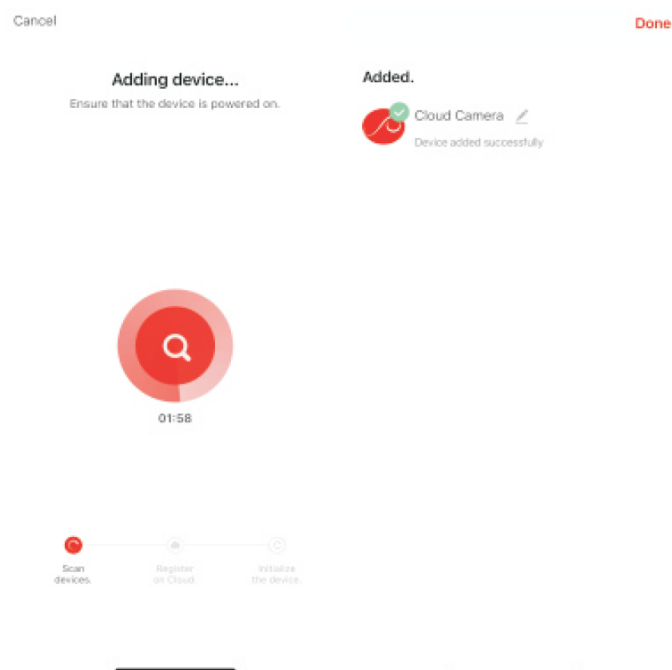


figure14



figure15



### Method 3: Wired addition (this method requires the camera to have a network port)

- 3.1 Click the "+" sign at the top right of the home page (as shown in Figure 16)
- 3.2 Click WiFi camera (wired connection) (as shown in Figure 17)
- 3.3 Power on the camera wait about 30s and click "Next" (as shown in Figure 18)

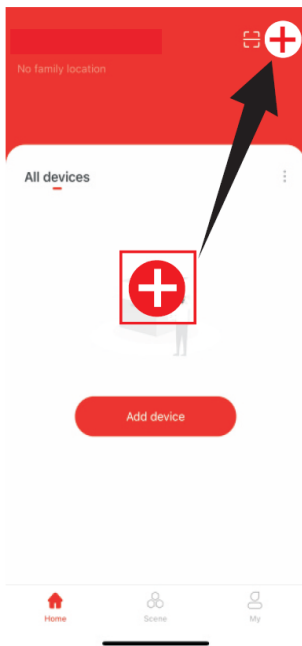


figure16

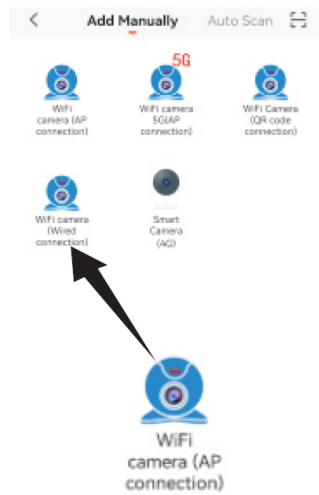


figure17

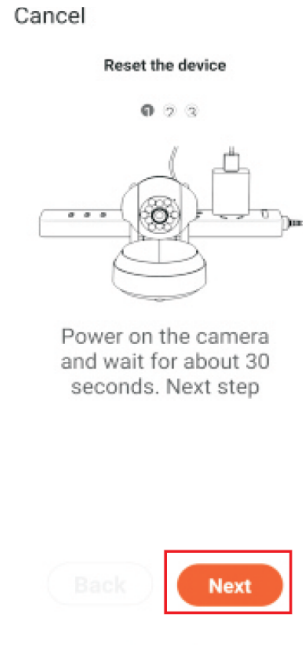


figure18

---

3.4 Confirm that the above steps are completed and click "Next"  
(as shown in Figure 19)

3.5 After heard "wait for connecting" Click next , if not , please reset the camera until you hear the prompt (as shown in figure20)

3.6 Device searching (as shown in Figure 21)

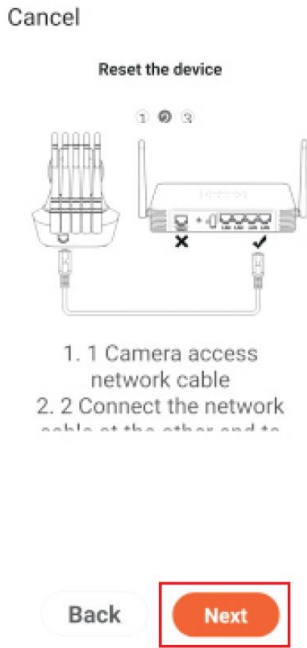


figure19

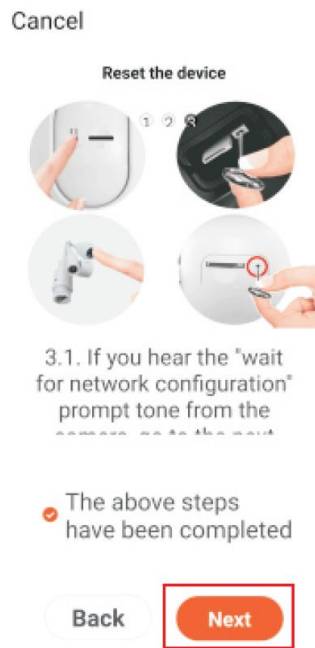


figure20

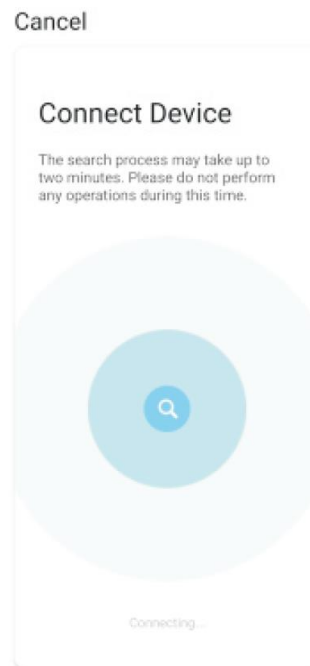
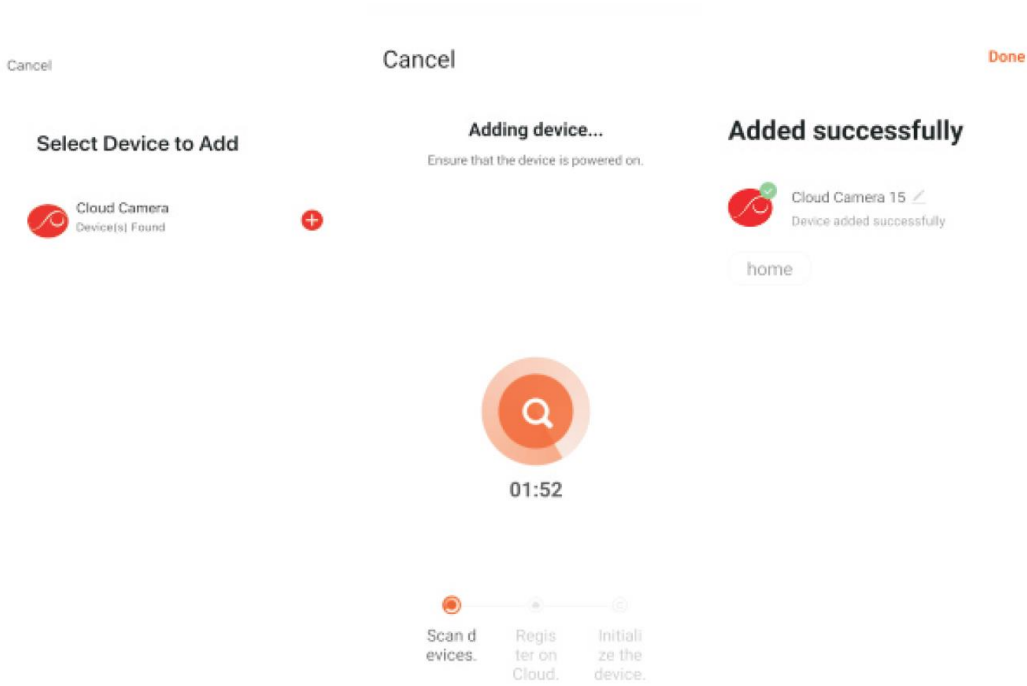


figure21

---

- 
- 3.7 After finding the camera, click the "+" sign on the right to add it (as shown in Figure 22)
  - 3.8 The device is being added (as shown in Figure 23)
  - 3.9 After jumping out of the successful addition page, click the "Finish" button on the upper right to complete the addition (as shown in Figure 24)



---

figure22

figure23

figure24

---

---

## FAQ

1. Can two mobile phones be connected to one camera at the same time?  
(A camera can only be added by one account, and multiple mobile phones can be viewed by sharing the device or logging in to the same account through multiple mobile phones)
  2. Can I connect to the camera without WiFi?  
(No, the camera needs to be connected to WiFi network to use)
  3. Check the playback prompt "SD card not detected"?  
(Check if the memory card is correctly inserted into the camera)
  4. How to change the network connection?  
(Long press the camera reset button until the "reset successful" is issued to restart and then connect)
  5. The camera prompts to be offline?  
(Check whether the WiFi network is normal, check whether the power supply is working properly)
-

---

## warranty card

your name: \_\_\_\_\_

shoppingtime: \_\_\_\_\_

contact details: \_\_\_\_\_

cause of issue: \_\_\_\_\_

390Eyes

### **FCC Statement**

This equipment has been tested and found to comply with the limits for a Class B digital device, pursuant to Part 15 of the FCC Rules. These limits are designed to provide reasonable protection against harmful interference in a residential installation. This equipment generates uses and can radiate radio frequency energy and, if not installed and used in accordance with the instructions, may cause harmful interference to radio communications. However, there is no guarantee that interference will not occur in a particular installation. If this equipment does cause harmful interference to radio or television reception, which can be determined by turning the equipment off and on, the user is encouraged to try to correct the interference by one or more of the following measures:

- Reorient or relocate the receiving antenna.
- Increase the separation between the equipment and receiver.
- Connect the equipment into an outlet on a circuit different from that to which the receiver is connected.
- Consult the dealer or an experienced radio/TV technician for help.

This device complies with part 15 of the FCC Rules. Operation is subject to the following two conditions: (1) This device may not cause harmful interference, and (2) this device must accept any interference received, including interference that may cause undesired operation.

Changes or modifications not expressly approved by the party responsible for compliance could void the user's authority to operate the equipment.

This equipment complies with FCC radiation exposure limits set forth for an uncontrolled environment.

This equipment should be installed and operated with minimum distance 20cm between the radiator & your body.