

75MM

123MM



# Ease Life User Manual

Wi-Fi Smart Camera

V1-2305

## Download App

Scan the QR code below to download the latest software APP, or directly search for "Ease Life" in the App Store and Google Play to download



Ease Life

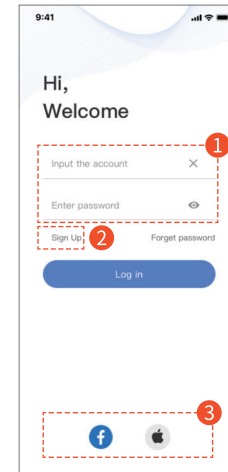


Scan to download

**Note:** iPhone requires iOS 10.0 or higher, Android phone requires Android 5.0 or higher

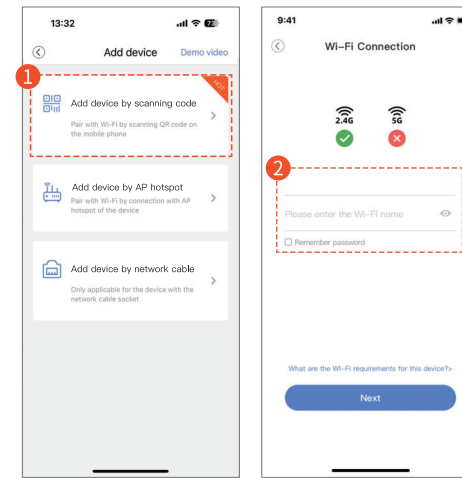
## Account Login

1. Enter your account and password, click the "Login" button
2. If it is the first time to use Ease Life, please register an account first
3. You can also log in with Facebook and Apple accounts directly



## Add Device By Scanning Code

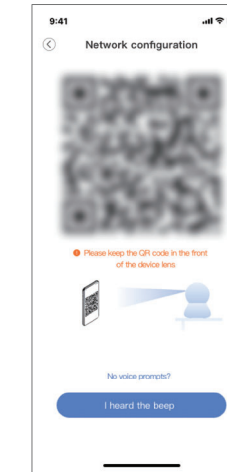
1. Choose "Add device by scanning code"
2. Enter your Wi-Fi account and password, and choose to connect to 2.4G or 5G Wi-Fi signal according to the device model



**Note:** Recommend to connect to a 2.4G Wi-Fi signal

## Add Device By Scanning Code

1. Place the QR code on the phone screen 4-12 inches in front of the device, and move it back and forth slowly
2. When the device scans the QR code on the phone, the device will make a "beep beep" sound
3. If the scan fails for a long time, please visit the following address to view the demonstration video: <https://www.youtube.com/@EaseLifeSecurity>



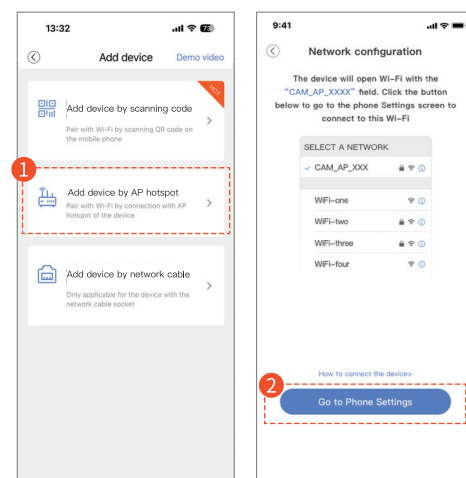
## Add Device By Scanning Code

1. Please wait patiently for 1~2 minutes, the device will connect to the network and bind to your account
2. If the device prompts "Network connection failed", please recheck the entered Wi-Fi account and password, and make sure they are correct



## Add Device By AP Hotspot

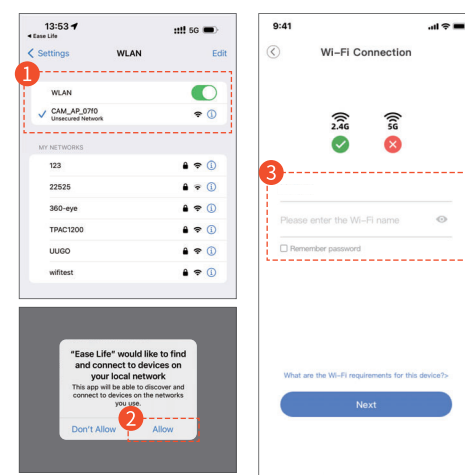
1. Choose "Add device by AP hotspot"
2. Click "Go to Phone Settings", connect to the Wi-Fi starting with "CAM\_AP", and then back to Ease Life



**Note:** During the process of adding device, please allow all permission requests, otherwise the process may fail

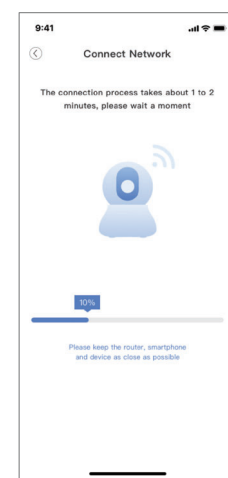
## Add Device By AP Hotspot

1. When the phone is connected to the hotspot of the device, then back to Ease Life
2. On phones with iOS 14 and above, **BE SURE** to select "Allow" in the following dialog
3. Enter your home Wi-Fi account and password correctly

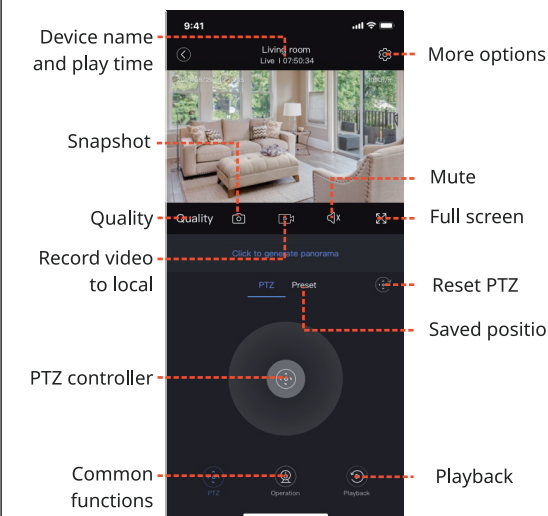


## Add Device By AP Hotspot

1. Please wait patiently for 1~2 minutes, the device will connect to the network and bind to your account
2. If the device prompts "Network connection failed", please recheck the entered Wi-Fi account and password, and make sure they are correct



## Features



## FAQs

- 1. When adding a device, the device prompts "Network connection failed"**  
Make sure the entered Wi-Fi name and password are correct. Some devices only support 2.4G Wi-Fi network and do not support 5G signal. Please contact the supplier to confirm.
- 2. Device often appears offline**  
Replace a power adaptor, and place the device close to the router. It is recommended that there should be no solid walls, metal door frames, etc. between the two, so as not to affect the network signal strength.
- 3. A memory card is inserted into the device but can be recognized**  
The device supports a memory card up to 128GB. Put the memory card on the computer and format it into FAT32, and then insert the memory card into the device before power on.

## Notes

1. Please cut the power off when inserting/removing your SD card to ensure it can be recognized.
2. To improve the success rate of scanning QR code, please make sure there is no dust on the lens, adjust the smartphone screen brightness to high, tap the QR code to enlarge it, adjust the distance between the lens and screen, the optimal distance is 4-12 inches.
3. Do not use the device in any extreme weather environments such as extremely high, low temperatures, direct strong sunlight, or heavy rain for long periods of time. The suitable temperature for the product and accessories is -20 °C to 60 °C.
4. If you use a third-party charger, the recommended output voltage/current of the adaptor is DC 5V/2A.

**FCC Warning:**

This equipment has been tested and found to comply with the limits for a Class B digital device, pursuant to part 15 of the FCC Rules. These limits are designed to provide reasonable protection against harmful interference in a residential installation. This equipment generates, uses and can radiate radio frequency energy and, if not installed and used in accordance with the instructions, may cause harmful interference to radio communications. However, there is no guarantee that interference will not occur in a particular installation. If this equipment does cause harmful interference to radio or television reception, which can be determined by turning the equipment off and on, the user is encouraged to try to correct the interference by one or more of the following measures:

- Reorient or relocate the receiving antenna.
- Increase the separation between the equipment and receiver.
- Connect the equipment into an outlet on a circuit different from that to which the receiver is connected.
- Consult the dealer or an experienced radio/TV technician for help.

**Caution:** Any changes or modifications to this device not explicitly approved by manufacturer could void your authority to operate this equipment.

This device complies with part 15 of the FCC Rules. Operation is subject to the following two conditions:

(1) This device may not cause harmful interference, and (2) this device must accept any interference received, including interference that may cause undesired operation.

This equipment complies with FCC radiation exposure limits set forth for an uncontrolled environment. This equipment should be installed and operated with minimum distance 20cm between the radiator and your body.