

承 认 书

APPROVAL SHEET

客户名称

CUSTOMER NAME:

产品名称

PRODUCT NAME: 2.4G 内置天线

客户料号

CUSTOMER P/N:

优比电子料号

Youbi P/N: UB01NF3D977A REV: A

	MANUFACTURER SIGNATURE	CUSTOMER SIGNATURE
CHECKED BY:	Yongxin Lu 	
APPROVED BY:	工程专用章 Changxing. Liu	
DATE:	2022/6/14	

Modification History

Version	Content Revision	Issued by	Date
A	Original version	Yongxin.Lu	2022-6-14

Content

<i>Item</i>	<i>Description</i>
1.-----	Electrical Specification
2.-----	Test Items and Equipment
3.-----	S Parameter-Single antenna test
4.-----	Efficiency and Gain
5.-----	Radiation Pattern
6.-----	Antenna installation diagram
7.-----	Mechanical Specification
8.-----	Packaging

1. Electrical Specification:

Characteristics	Specifications	Unit
Outline Dimensions	20.8x32.5	mm
Frequency	2400-2500	MHz
Impedance	50	Ω
VSWR	< 2.0	
Polarization	Linear Polarization	
Gain	-4 REF	dBi
Efficiency	> 20	%
Connector Type	N/A	
Operating temperature	-20°C~+85°C	
Storage Temp	-20°C~+50°C	

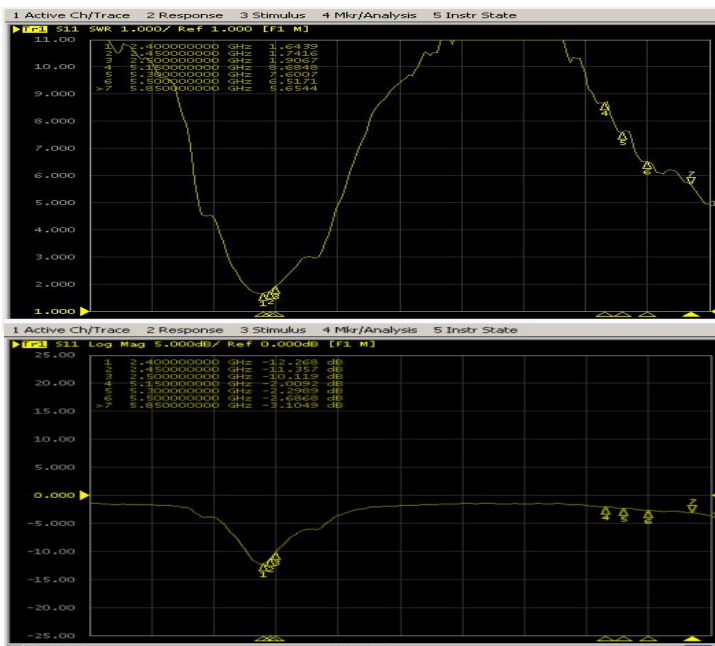
2. Test Items and Equipment

	Test items	Test equipment
S Parameter	1.Return Loss 2.VSWR	Network analyzer (Agilent E5071B)
The whole machine of Passive parameters	1.Frequency 2.Gain 3.Radiation Pattern	1.3D microwave darkroom (5m*5m*5m) 2.Network analyzer (Agilent E5071B)
The whole machine of Active parameters	1.TRP 2.TIS	1.3D microwave darkroom (5m*5m*5m) 2.Comprehensive test instrument (CMW500)



3. S Parameter-Single antenna test

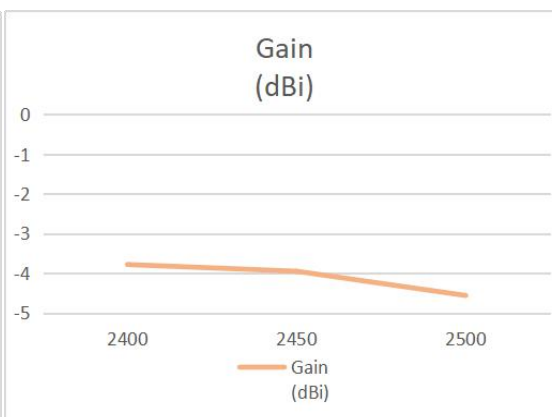
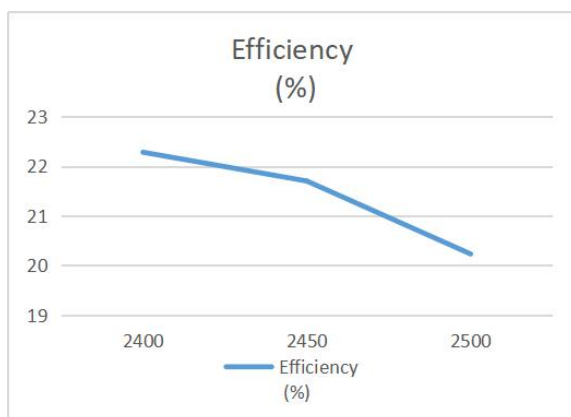
Frequency (MHz)	Return Loss (dB)	VSWR
2400	-12.26	1.64
2450	-11.35	1.74
2500	-10.11	1.90



* Voltage Standing Wave Ratio(VSWR)
Return Loss(RL)
 $RL=20*\log_{10}[(VSWR+1)/(VSWR-1)]$

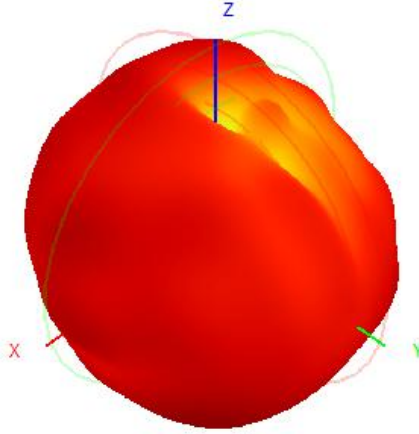
4. Efficiency and Gain

Frequency (MHz)	2400	2450	2500
Efficiency (%)	22.28	21.70	20.23
Gain (dBi)	-3.78	-3.95	-4.56

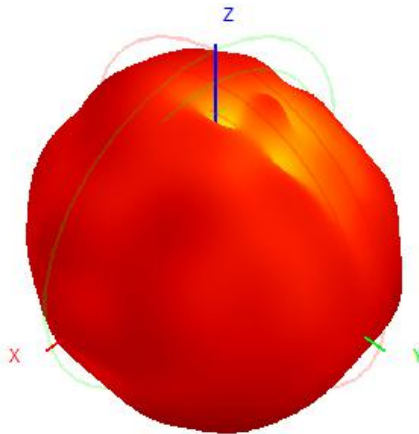


5. Radiation Pattern

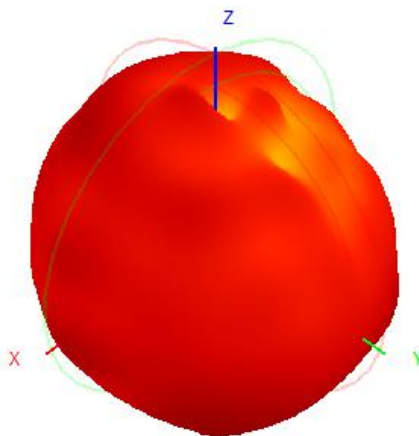
5-1 Antenna 3D Radiation Pattern



2400MHz

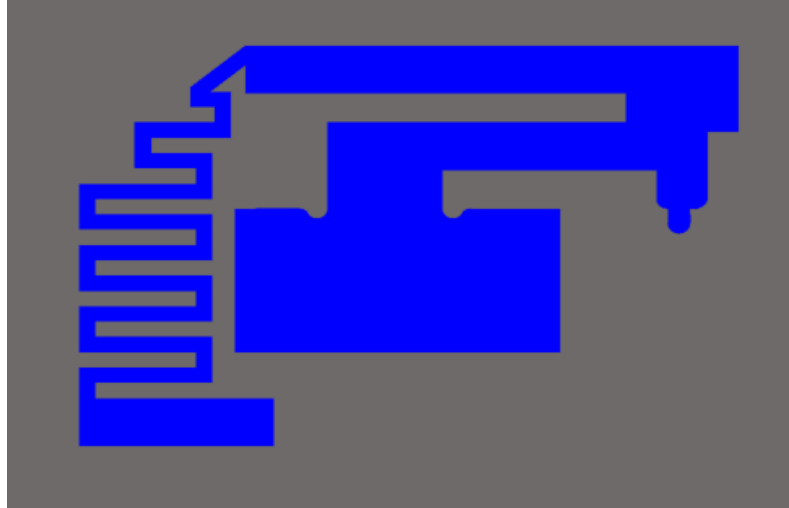


2450MHZ

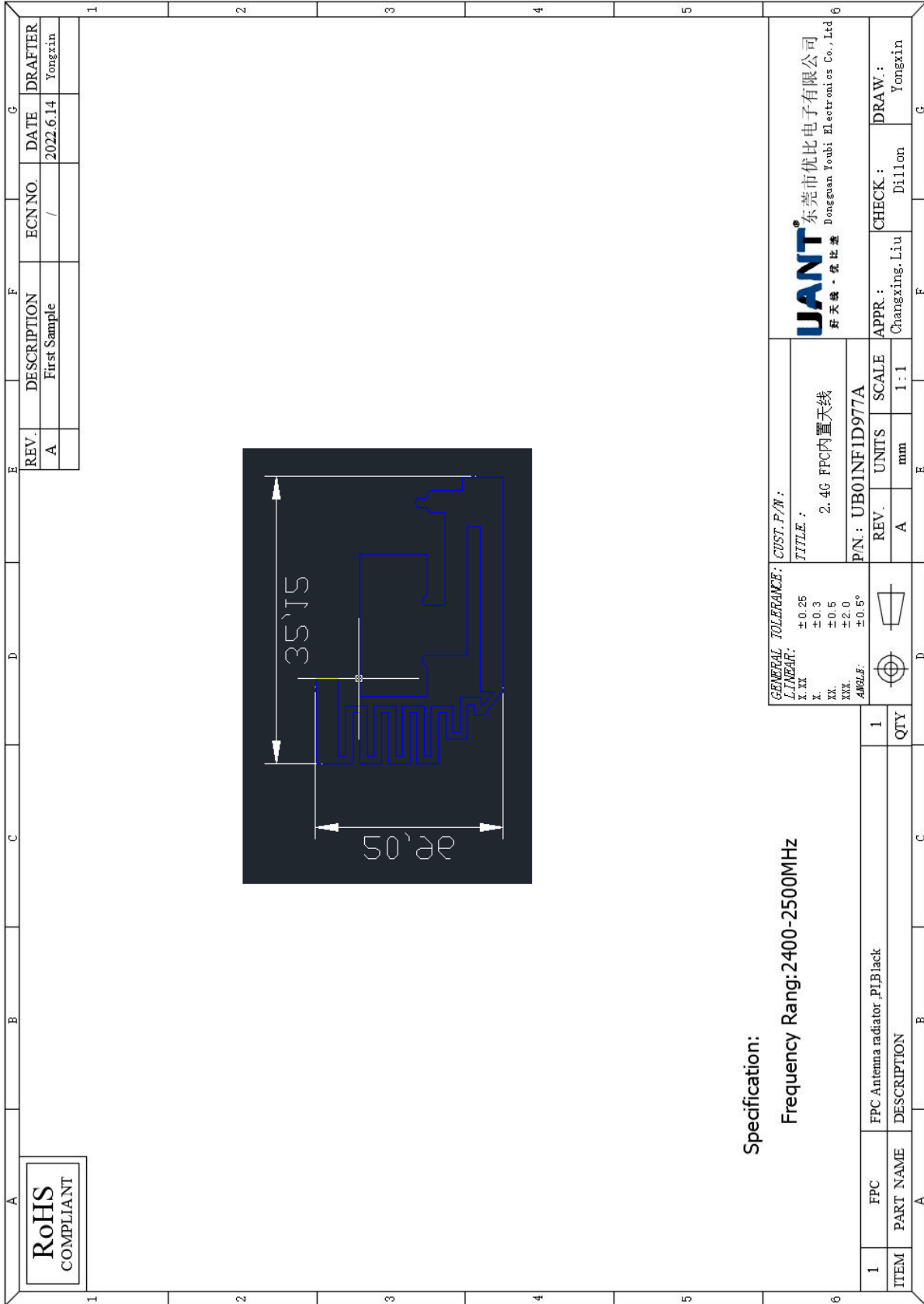


2500MHZ

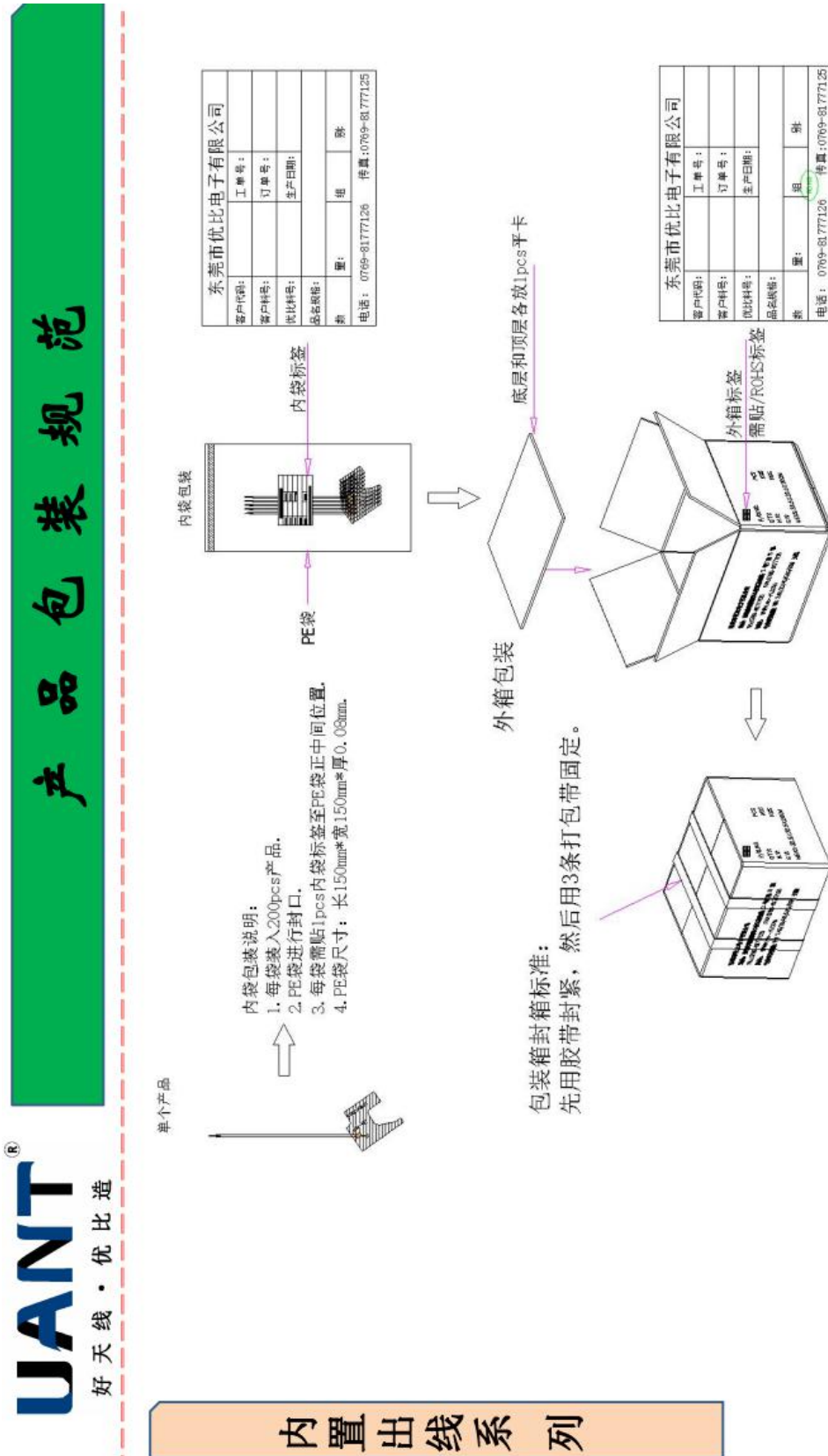
6. Antenna installation diagram



7. Mechanical Specification



8. Packaging



注: 此份包装规范适用于FPC, PCB天线类的线材总长<90mm带ipex和不带ipex产品, 属于通用类型.
 1. **中号纸箱**装10000pcs产品每箱.