

USER MANUAL

产品用户手册

A.APP Download

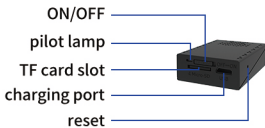
Scan the QR code below with your cell phone to download V380ProAPP, install it and register to log in.



V380Pro



B.Introduction to buttons



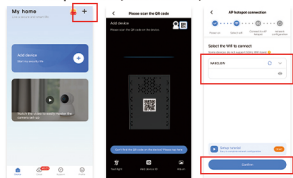
V1.1

C.camera networking

1. Connect the camera to the power supply and ensure that the switch on the camera is turned on. After a few seconds, the indicator light for waiting for the camera turns red, indicating that the camera has started normally and is waiting for connection.

*In case of any abnormal situation, insert the reset pin into the reset hole button for about 3 seconds until the red and blue indicator lights up to reset the camera.

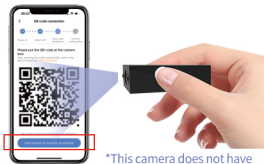
2. Open the V380 Pro app, click on the "+" button in the upper right corner to add a device, scan the QR code attached to the bottom of the camera, select the WiFi you want to connect to, enter the password, and confirm;



① Click on the "+" button in the upper right corner
② Scan the QR code attached to the camera
③ Select your available WiFi, enter the password, and confirm

Note: This device currently does not support 5G frequency WIFI. Please choose 2.4G frequency WIFI

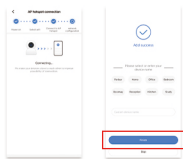
3.Aim the camera's lens at the QR code on the cell phone screen,Wait until you hear the "Configuration Information Received" tone, Press "Hear Success Tone" below.



*This camera does not have speakers and will not emit a beep.

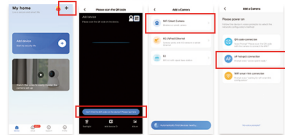
After confirming that the indicator light turns blue, you can press the "hear successful prompt tone" button.

4.Simply wait for the device to automatically connect to the network after, Remote monitoring can be realized.



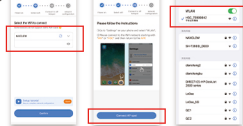
D.AP hotspot connection

1.Click on the "+" in the upper right corner and click on "Can't find the QR code? Click here."
2.Select "Wireless Smart Camera" and click "AP Hotspot Connection".



3.Select the WiFi that the camera needs to use and fill in the corresponding WiFi password;
4.Click the "Go to Hotspot" button to connect to the device hotspot (HSC+ID).

5.Return to APP, according to the prompts, short press the reset button for 1 second, wait for the device to connect to the network automatically, then you can realize remote monitoring.



FCC warning:

1. This device should be installed and operated with minimum distance 20cm between the radiator&your body.
2. This device complies with part 15 of the FCC Rules. Operation is subject to the following two conditions:
 - (1) This device may not cause harmful interference, and
 - (2) This device must accept any interference received, including interference that may cause undesired operation.
3. Changes or modifications not expressly approved by the party responsible for compliance could void the user's authority to operate the equipment.
4. This equipment has been tested and found to comply with the limits for a Class B digital device, pursuant to part 15 of the FCC Rules. These limits are designed to provide reasonable protection against harmful interference in a residential installation. This equipment generates, uses and can radiate radio frequency energy and, if not installed and used in accordance with the instructions, may cause harmful interference to radio communications. However, there is no guarantee that interference will not occur in a particular installation. If this equipment does cause harmful interference to radio or television reception, which can be determined by turning the equipment off and on, the user is encouraged to try to correct the interference by one or more of the following measures:
 - Reorient or relocate the receiving antenna.
 - Increase the separation between the equipment and receiver.
 - Connect the equipment into an outlet on a circuit different from that to which the receiver is connected.
 - Consult the dealer or an experienced radio/TV technician for help.