

## Product Similarity Declaration

Product name: Bluetooth Headset

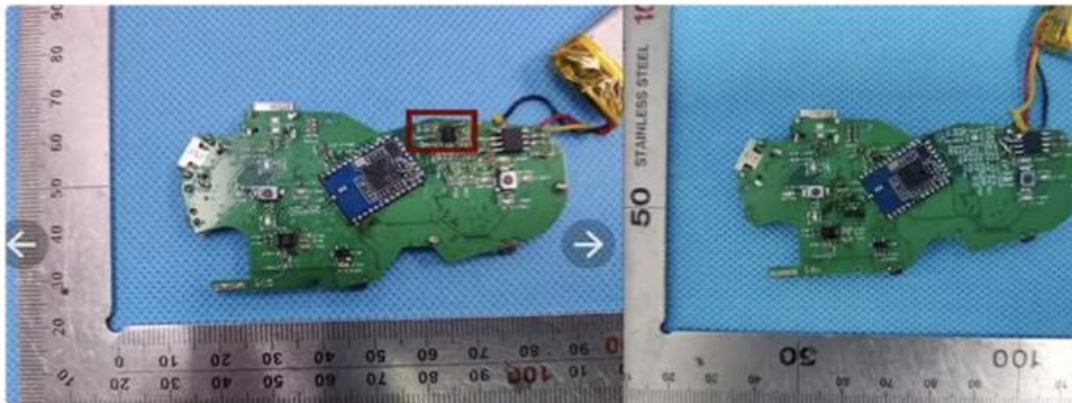
Model name: K10H, K10

FCC ID: 2BESG-K10H

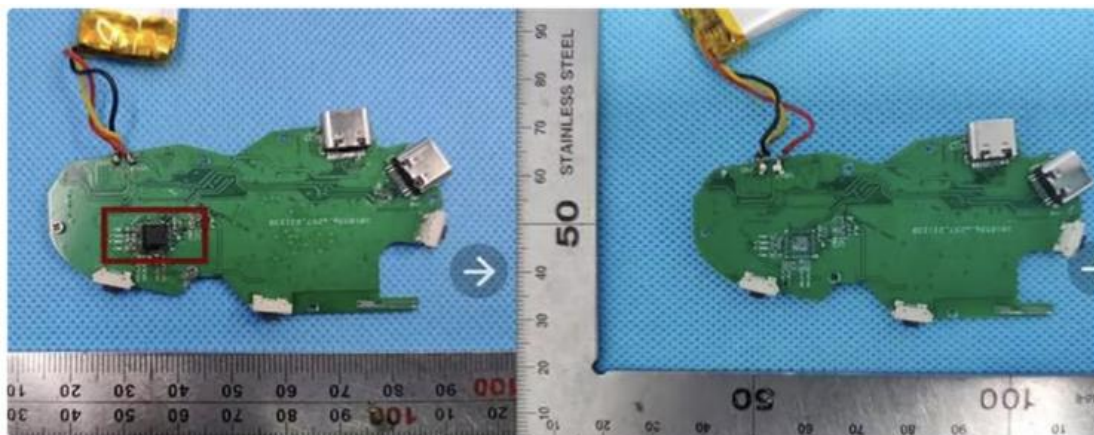
Our Keweitu (Shenzhen) Technology Co., Ltd. has entrusted Attestation of Global Compliance (Shenzhen)Co.. Ltd. to arrange FCC ID certification for Bluetooth earphones. The differences between models K10 and K10H are explained and illustrated as follows:

The only difference between these models are the model name, digital sound processing chip, ear amplifier chip, and everything else are the same. The main test model K10 does not have an ear amplifier+digital power amplifier, while the series model K10H has an ear amplifier+digital power amplifier,

K10 second-generation, there is no need to use these two, mainly due to the difference in sound quality. There is no impact on other functions, and these functions do not affect the RF part.



HT97180 Primary amplified stereo sound



Digital sound processing, for bass enhancement processing

weidong Jiang

Signature:

Contact person: Weidong Jiang