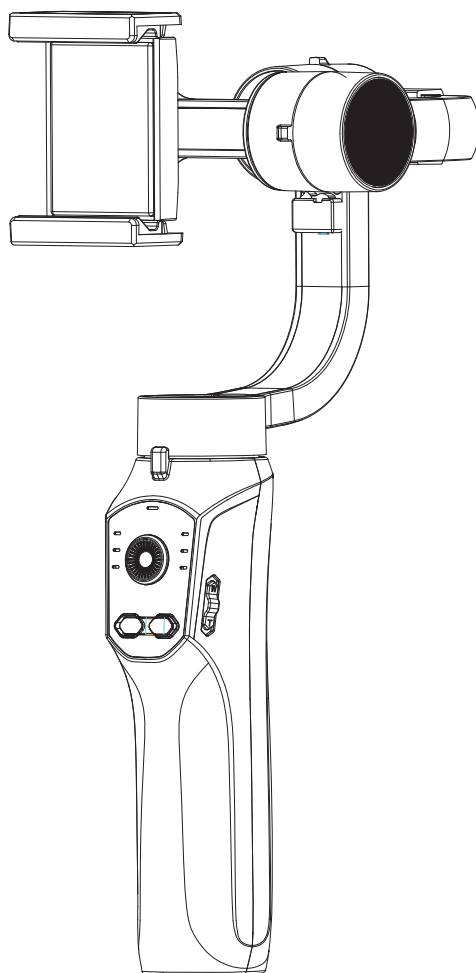


F10pro 3-Axis Gimbal Stabilizer

User Manual



CONTENTS

Quick start, install the smartphone and adjust balance 2

Power on/off ----- 3

Connect to the bluetooth by native camera ----- 3

Instruction for four modes ----- 4

Get to know the gimbal ----- 6

Switch between horizontal/vertical mode ----- 8

Charging ----- 10

About APP ----- 10

Specification ----- 12

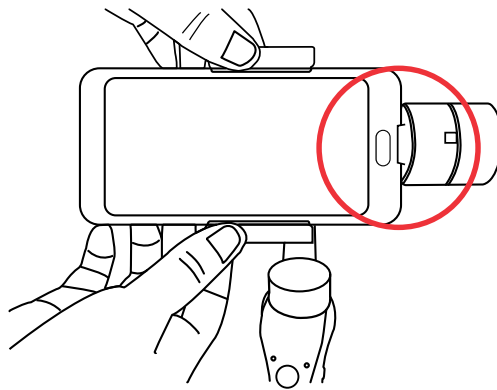
Caution ----- 13

Storage and maintenance ----- 14

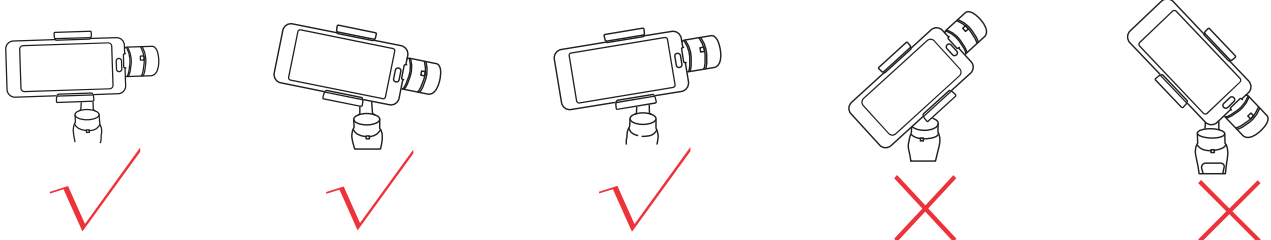
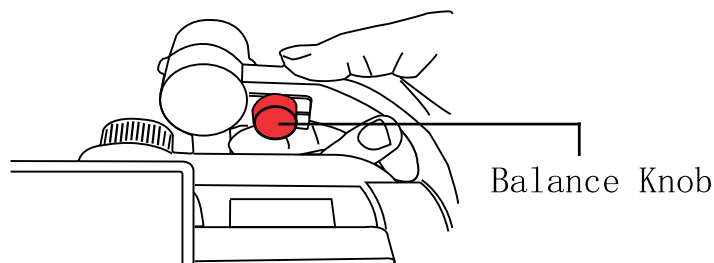
Quick start, install the smartphone and
adjust balance
(don't power on)

1. Remove the smartphone case before installing, and put
the smartphone on the phone holder and make the smartphone
at the middle of holder.

2. Please put the smartphone in the phone holder, and keep
the phone resists the motor as below picture shows, to
avoid the vibration while using



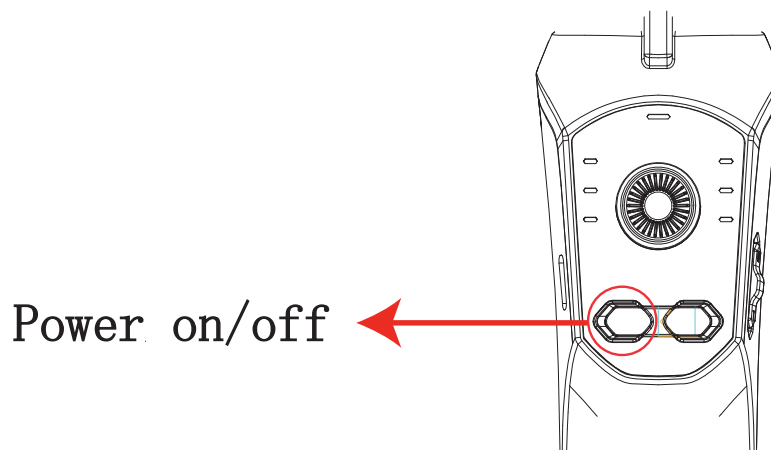
3. Loosen the balance knob, and adjust the balance arm
until the smartphone is in nearly balance condition



Power On/Off

Power on

Press the power button until the indicator lights are on



Power on/off

Power off

Press the power button until the indicator lights are off

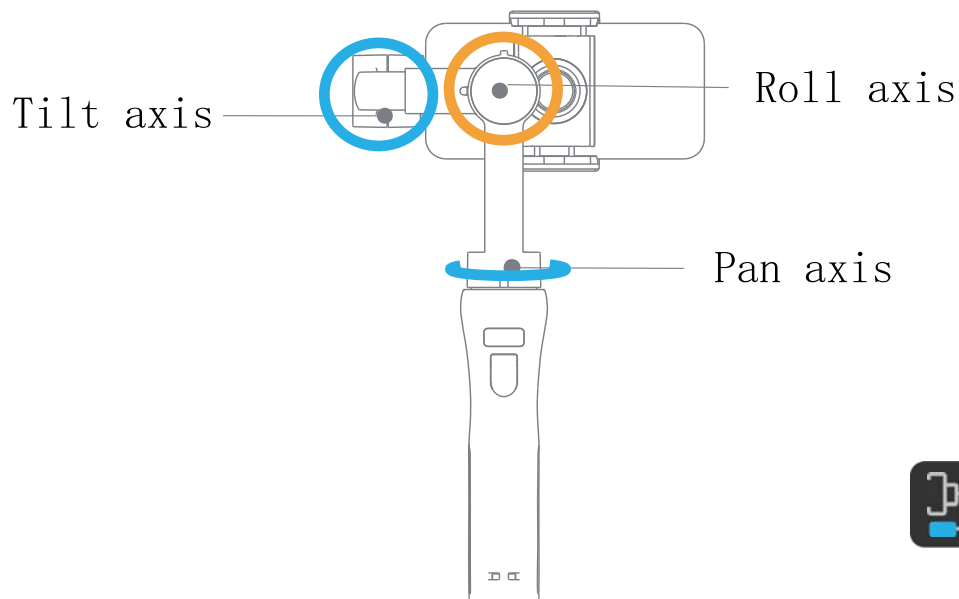
Connect to the bluetooth by native camera

Power on the gimbal, open the bluetooth on the phone, go into smartphone bluetooth setting page, choose the device name “GP5-xxxx” to connect.

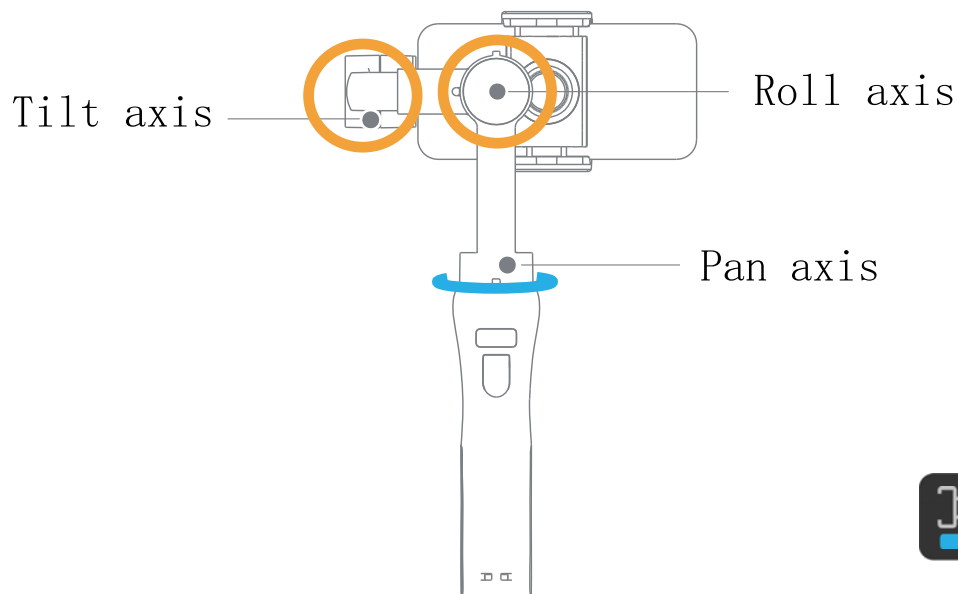
Instruction for four modes

All Follow(AF): The Roll axis is locked, the Pan axis (left/right) and Tilt axis(up/down) will follow the movement of handle.

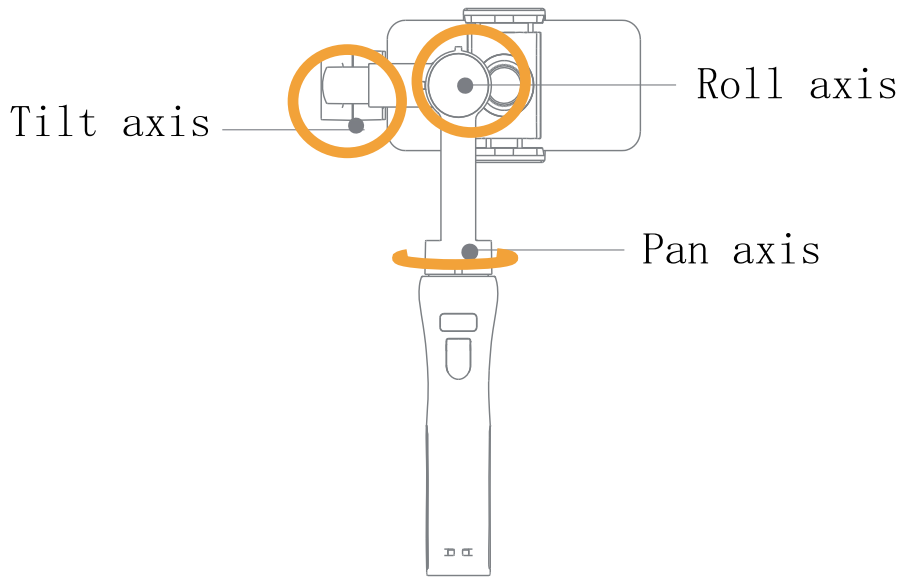
※ Default mode upon powering on



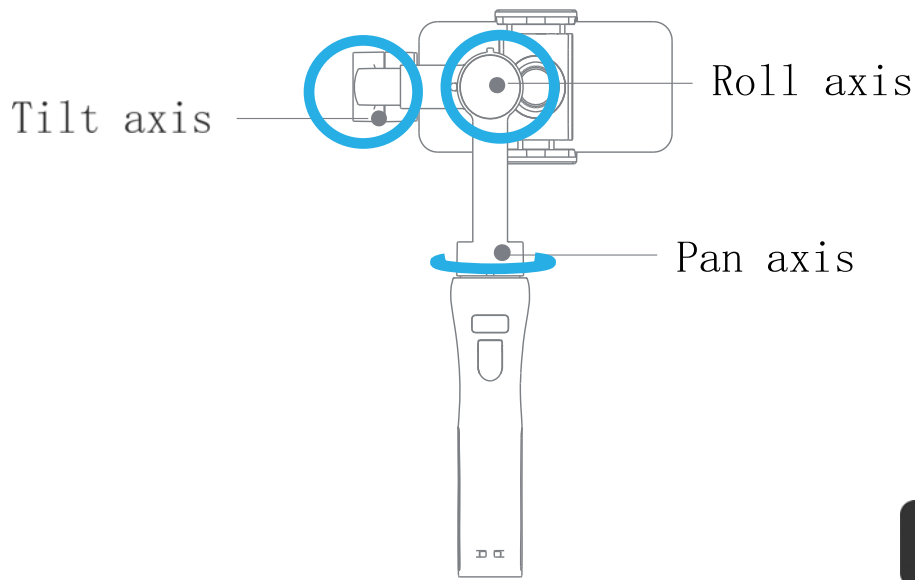
Half Follow(HF): Tilt & Roll axis are locked. Pan axis rotates (left/right) smoothly with the handle



Lock Full(LF): Pan,Tilt, Roll axis are all locked. The camera remains still and stable, which means the camera cannot follow the movement of the handle



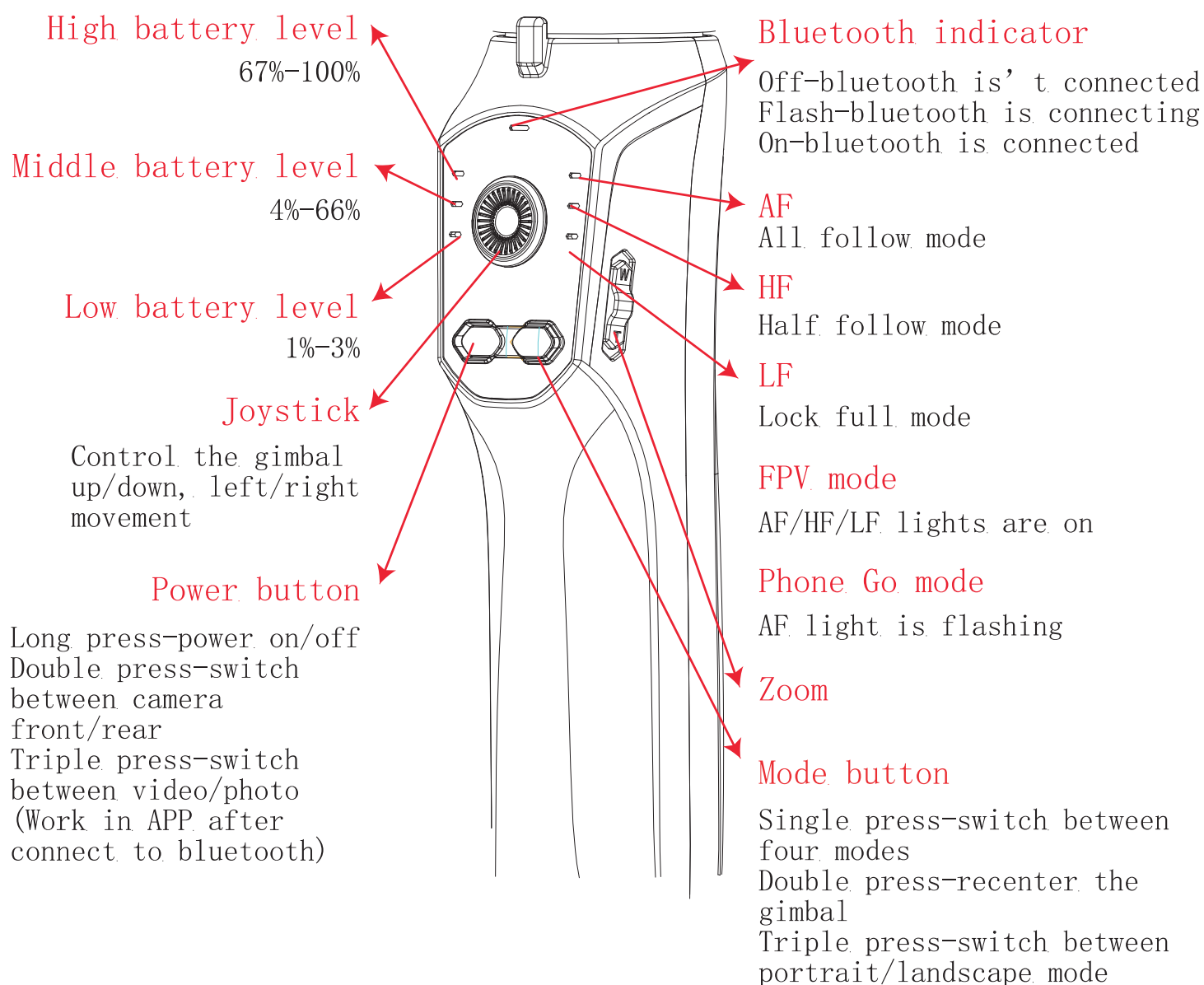
First person view(FPV): Pan, Tilt, Roll axis follow the movement of the handle

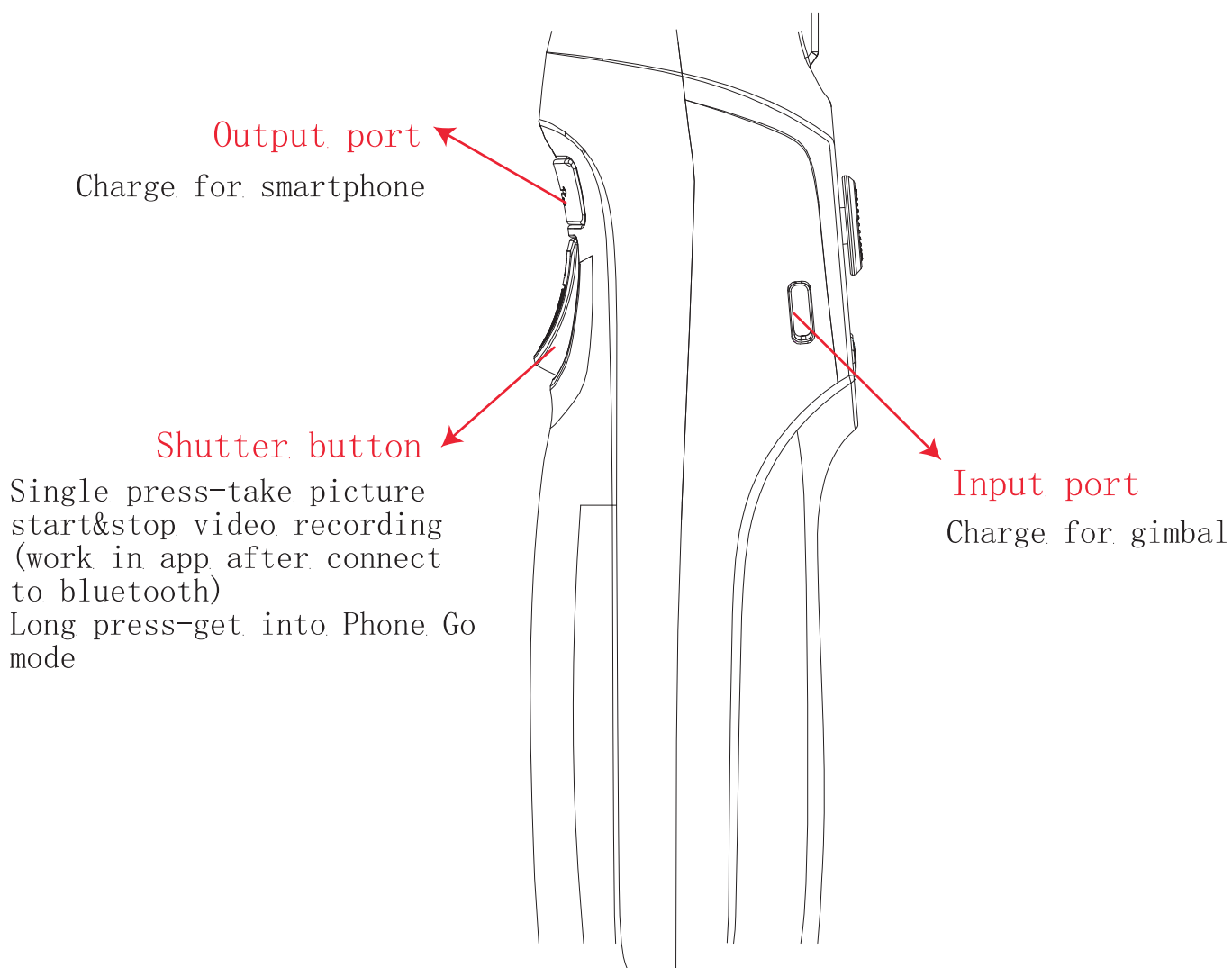


Phone Go

Long press the shutter button until the AF light is flashing, gimbal go to Phone Go mode, release the shutter button, gimbal will go out of Phone Go mode

Get to know the gimbal



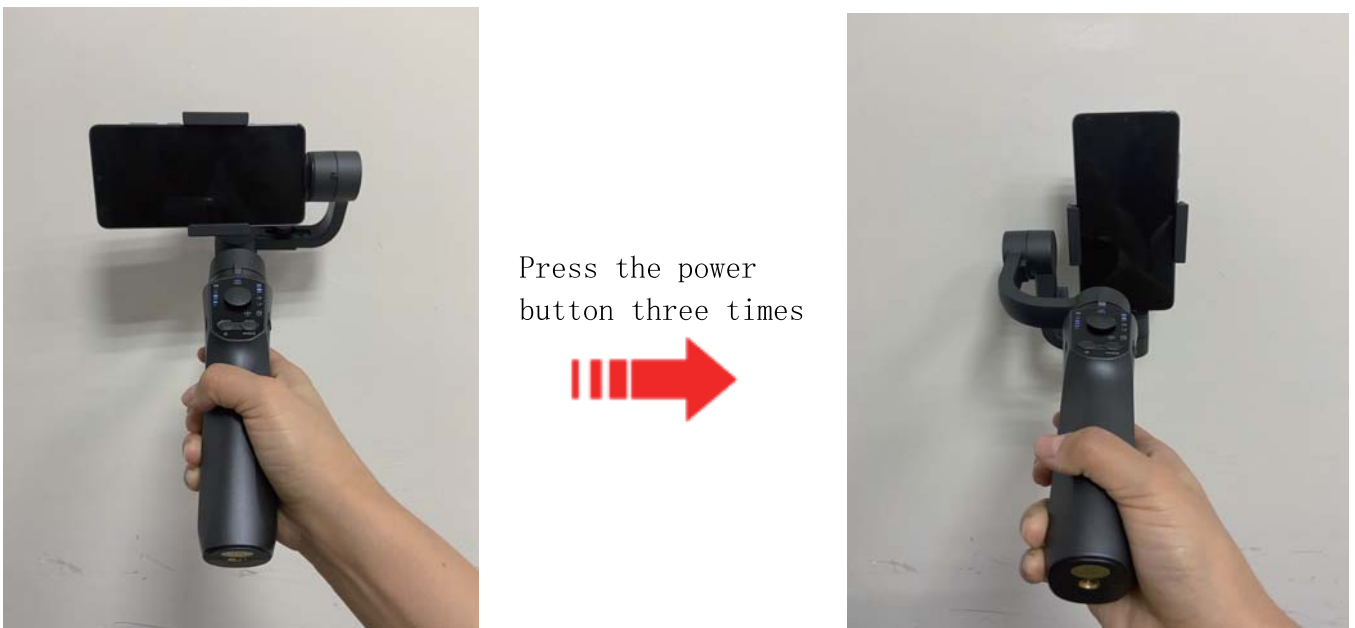


Switch between horizontal/vertical mode (Three switching ways)

Way 1: Press the power button three times

1. Put the gimbal as the below picture shows
2. Press the power button three times, switch from horizontal mode to vertical mode;
3. Press the power button three times again, switch from vertical back to horizontal mode, or gimbal will back to horizontal mode automatically when hold gimbal upright;

Reminder: FPV mode doesn't support this operation

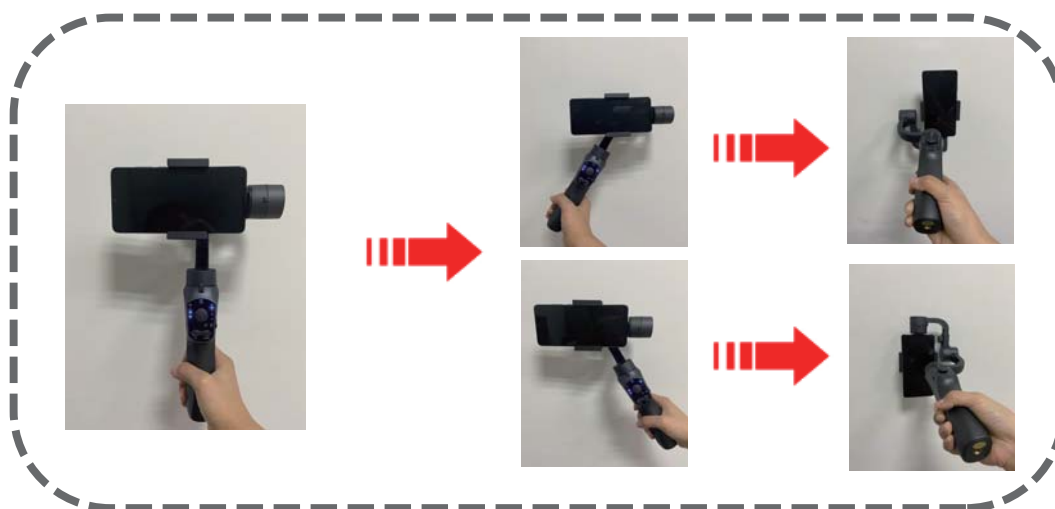


Way 2: Gesture switch

1. Hold the gimbal perpendicular to the ground;
2. Tilt the gimbal left or right with 70° ;

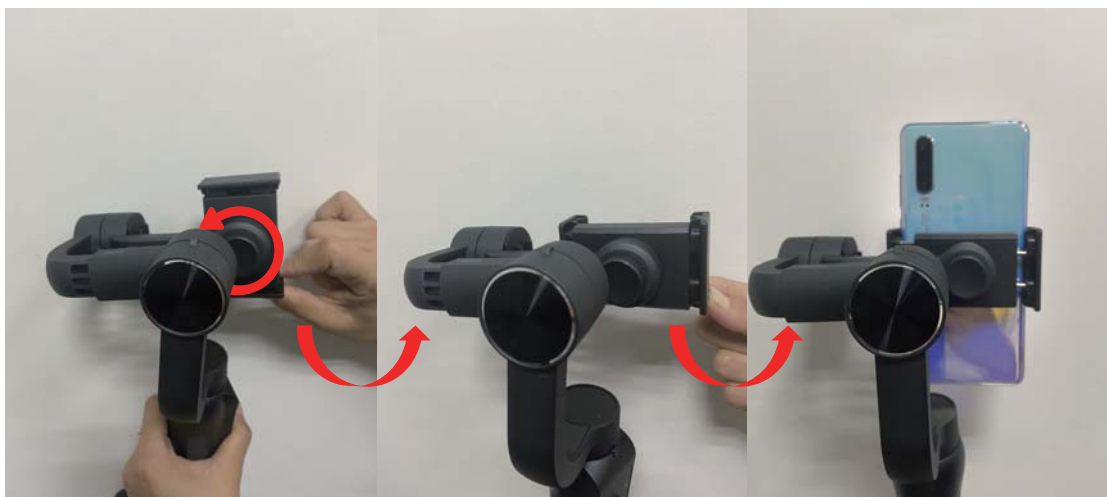
3. Gimbal will go to vertical mode automatically;
4. Gimbal will back to horizontal model automatically when hold the gimbal upright;

Reminder: FPV mode doesn't support this operation

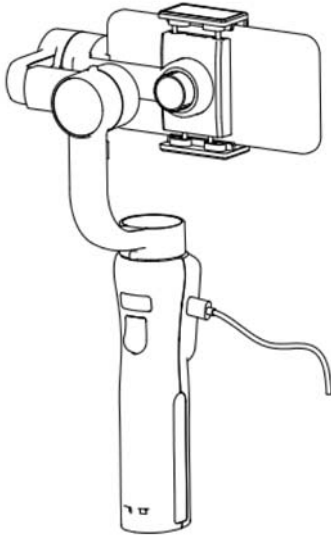


Way 3: Rotate the smartphone clamp

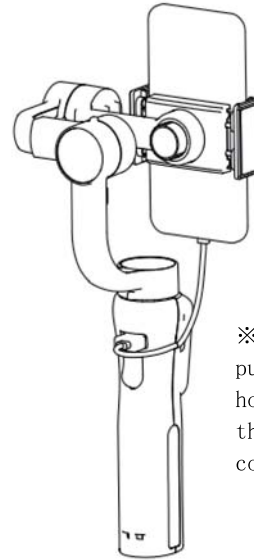
1. Loosen the clamp knob
2. Rotate the smartphone clamp with 90°
3. Tighten the clamp knob



Charging



Charge for gimbal



※(when smartphone is put on the clamp horizontally, need use the L-type charging connector)

Charge for smartphone

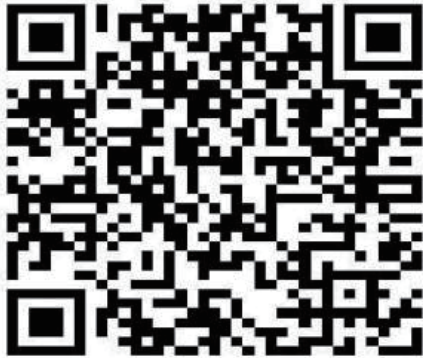
About APP

This product supports native camera, can do basic stable shooting without APP with native camera

If you want to use more functions (such as panoramic, zoom, tracking and time lapse), need download and use the app

Download the Gimbal Pro APP

Scan the QR code or search “Gimbal pro” on the Google play or App store



※ Gimbal Pro requires iOS 12.0 system and later or Android 8.0 system and later

Support iOS and Android

Connect to Gimbal Pro APP

1. Go to setting page on smartphone
2. Go to Bluetooth setting, find and click the device name “GP5_xxxx”

Specification

Pitch(Tilt) Angle	330°
Roll Angle	180°
Panning Angle	330°
Weight	440g
Payload	75-250g
Operating Temperature	0C° - 40C°
Controllable Pitch Angle	+155/-155°
Controllable Roll Angle	+30° /-30°
Controllable Pan Angle	+155/-155°
Operating Voltage	3.4~4.2V (Standard 3.7V)
Compatible Models	1. Smartphone width: 6-8.5cm 2. Smartphone length: no more than 16.5cm 3. Smartphone weight no more than 250g
Operating Current	150~3000mA (Standard 1500mA)
Gimbal Dimensions	10.8*7*28.9cm
Charging Time	4 hours
Usage Time	8-10 hours
Face tracking	Yes
APP	Yes

Zoom	Yes
Output/Input Current	1A
Output/Input Voltage	5V
Arm material	PPA+Nylon
Handle material	ABS+PC

Caution

1. Ensure the motor rotation is not blocked by external force during and after the stabilizer is powered on;
2. Please do not contact with sea water or corrosive liquid;
3. Please do not disassemble the stabilizer (except for the detachable accessories in the manual);
4. If the motor works continuously for a long time, the surface temperature of the motor may be too high.
5. It is strictly forbidden to drop or collide with the stabilizer, which may damage it and cause abnormal operation;

Storage and maintenance

1. Please keep this product away from children and pets;
2. It is forbidden to put the product near the heat source (furnace or heater, etc.) and in the car at hot weather;
3. Please store the product in a dry environment;
4. Do not overcharge or discharge the battery, otherwise the battery cell will be damaged;
5. Do not use the product in the environment with too high or too low temperature;

This device complies with part 15 of the FCC Rules. Operation is subject to the following two conditions: (1) this device may not cause harmful interference, and (2) this device must accept any interference received, including interference that may cause undesired operation.

Any changes or modifications not expressly approved by the party responsible for compliance could void the user's authority to operate the equipment.

NOTE: This equipment has been tested and found to comply with the limits for a Class B digital device, pursuant to Part 15 of the FCC Rules. These limits are designed to provide reasonable protection against harmful interference in a residential installation. This equipment generates, uses and can radiate radio frequency energy and, if not installed and used in accordance with the instructions, may cause harmful interference to radio communications. However, there is no guarantee that interference will not occur in a particular installation.

If this equipment does cause harmful interference to radio or television reception, which can be determined by turning the equipment off and on, the user is encouraged to try to correct the interference by one or more of the following measures:

- Reorient or relocate the receiving antenna.
- Increase the separation between the equipment and receiver.
- Connect the equipment into an outlet on a circuit different from that to which the receiver is connected.
- Consult the dealer or an experienced radio/TV technician for help.

The device has been evaluated to meet general RF exposure requirement. The device can be used in portable exposure condition without restriction