

Antenna specification

M47 PCB onboard antenna

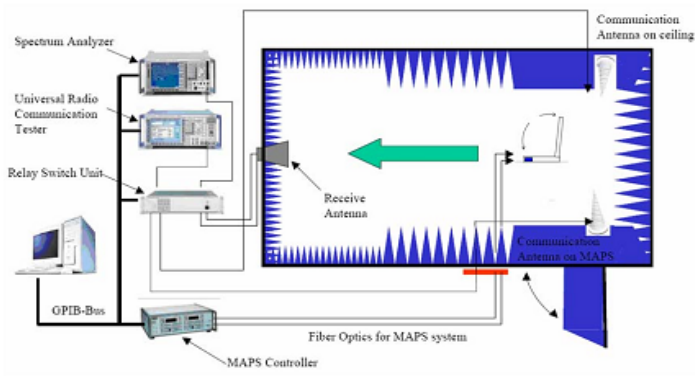
M47 on-board PCB antenna

Production Date Date: February 4, 2024

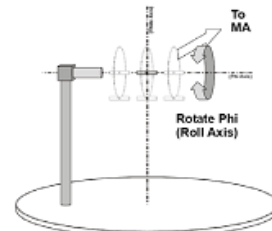
确认栏 **Confirmation of user:**

Designed by 拟制	Reviewed by 审核	Approved by 批准
刘东山	崔岑	周向阳

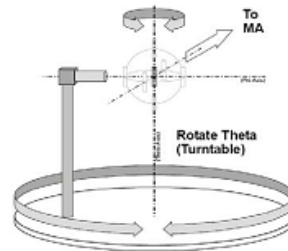
Test Equipment



(Testing by 3D anechoic chamber)

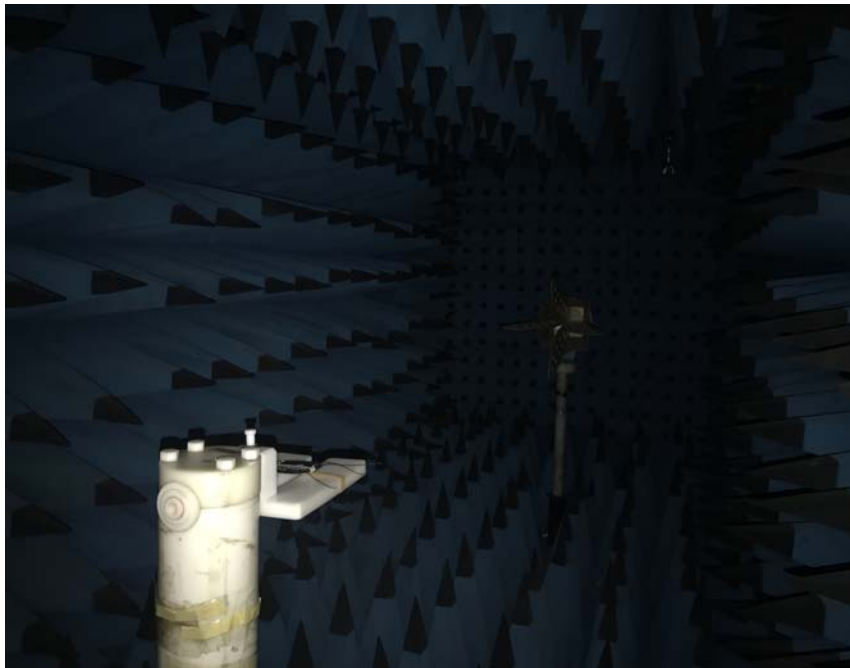


Phi axis test



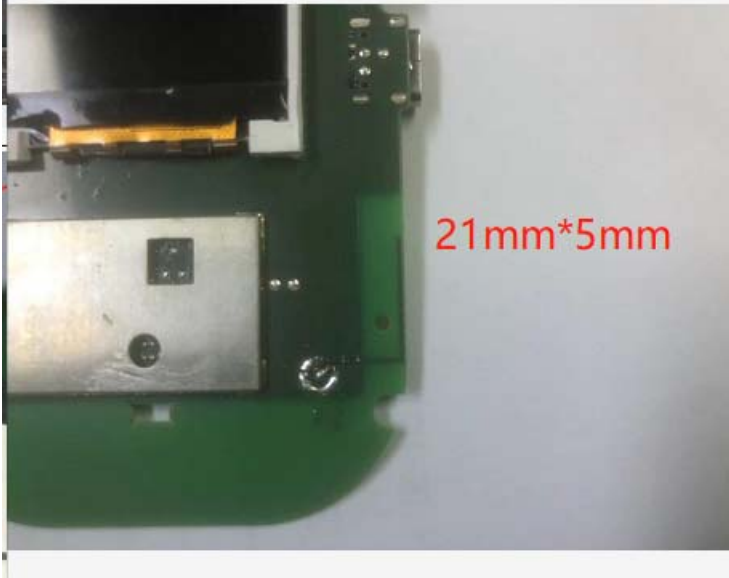


Theta axis test

Chamber

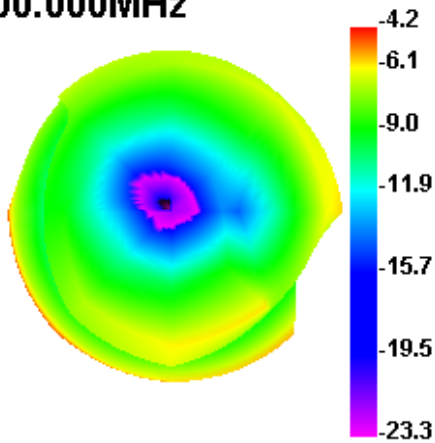


Item	Describe
Input impedance	50 Ω
VSWR	<2.5
Main antenna efficiency	4G LTE B2: -1.8dB B4: -1.7dB B5: -2.0dB B12: -6.5dB B13: -5.5dB B66: -1.7dB
Diversity antenna efficiency	4G LTE B2: -2.1dB B4: -1.9dB B5: -2.5dB B12: -6.8dB B13: -6dB B66: -1.9dB
WiFi antenna efficiency	2.4G: -1.8dB
Main antenna Gain	4G LTE B2: 3.1dBi B4: 3.2dBi B5: 2.6dBi B12: -1dBi B13: -0.8dBi B66: 3.2dBi
Diversity antenna Gain	4G LTE B2: 2.9dBi B4: 3.1dBi B5: 1.6dBi B12: -1.2dBi B13: -1dBi B66: 3.1dBi
WiFi antenna Gain	2.4G: 2.8dBi
Polarization	Linear Polarization

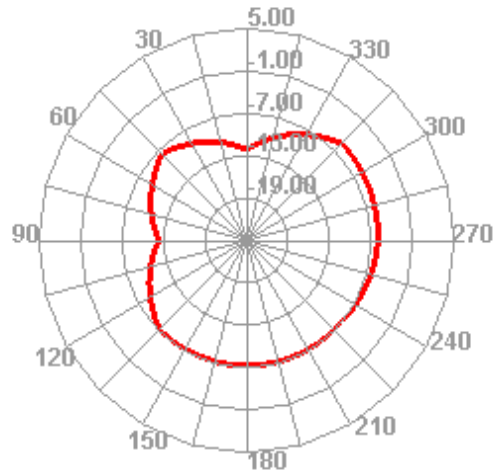
Antenna Shape	Frequency/Type
 <p style="color: red; text-align: center;">56mm*13.8mm</p>	700-960MHz 1710-2690MHz PCB
 <p style="color: red; text-align: center;">56mm*13.8mm</p>	700-960MHz 1710-2690MHz PCB
 <p style="color: red; text-align: center;">21mm*5mm</p>	2400-2500MHz PCB

Main Antenna

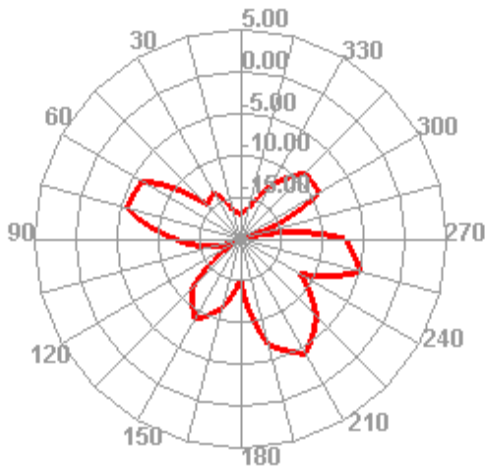
800.000MHz



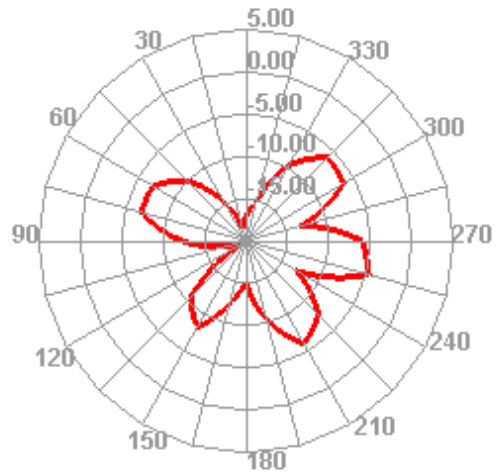
800.000MHz H



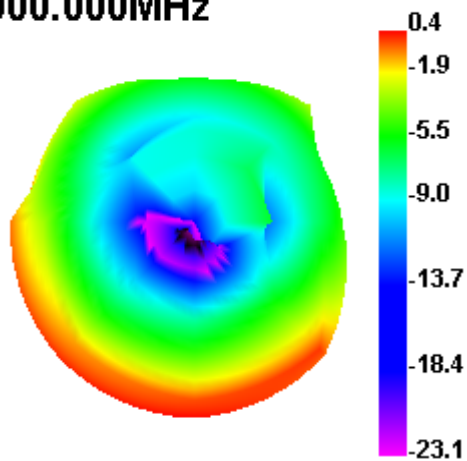
800.000MHz E1



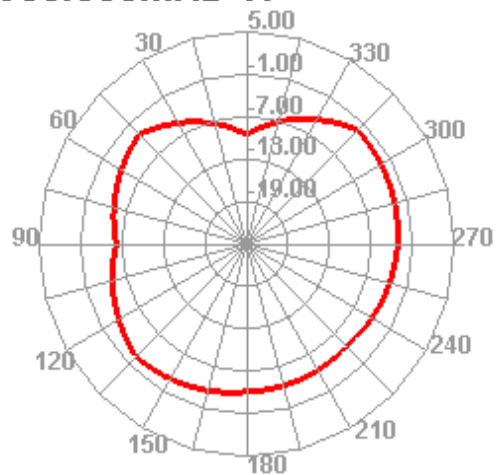
800.000MHz E2



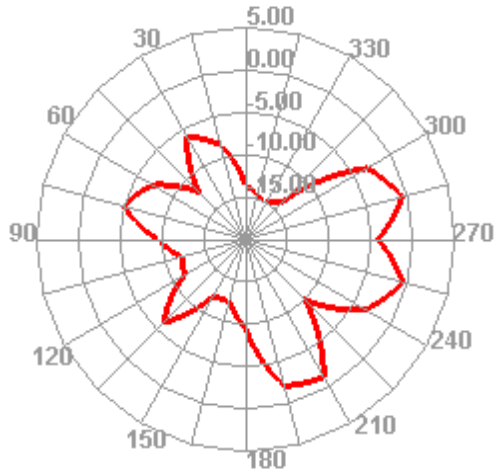
900.000MHz



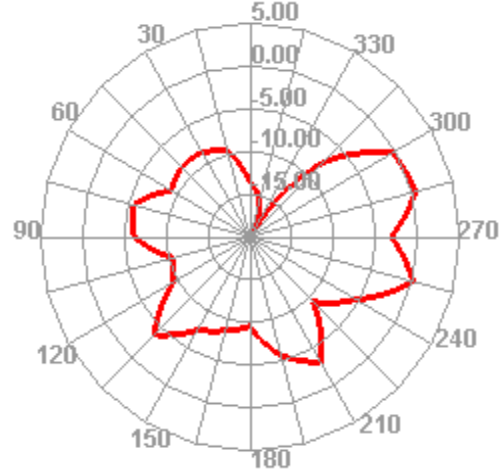
900.000MHz H



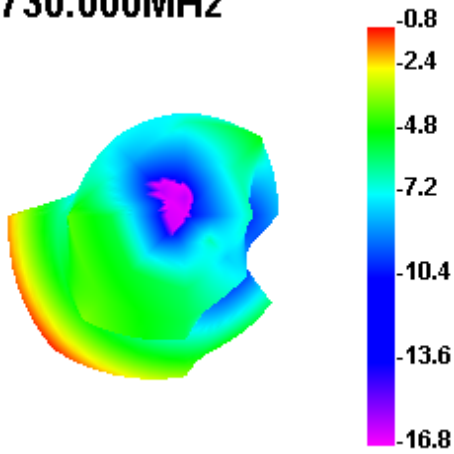
900.000MHz E1



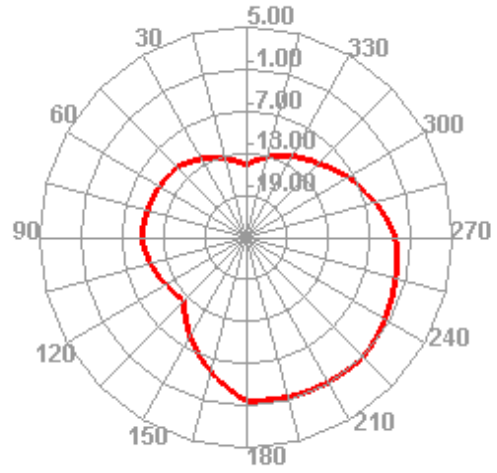
900.000MHz E2



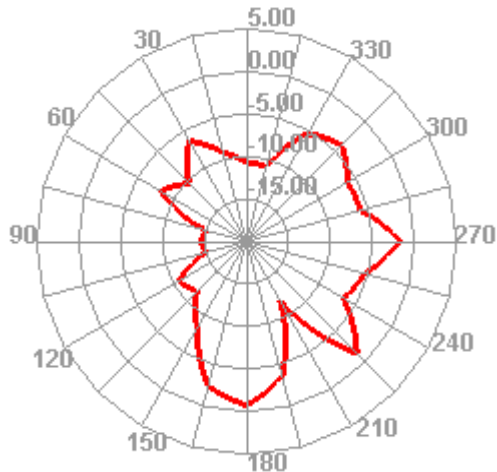
1730.000MHz



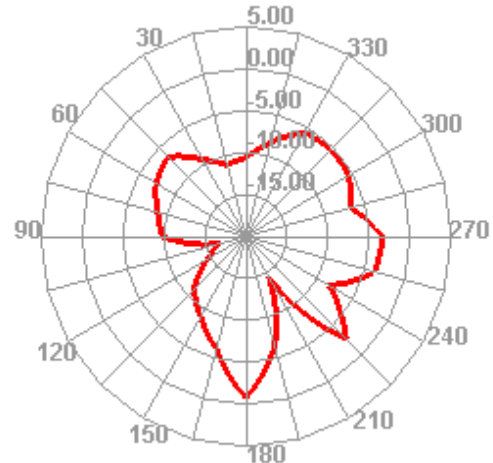
1730.000MHz H



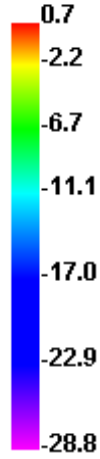
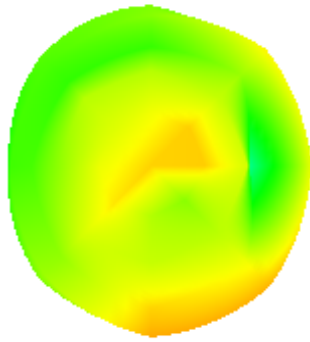
1730.000MHz E1



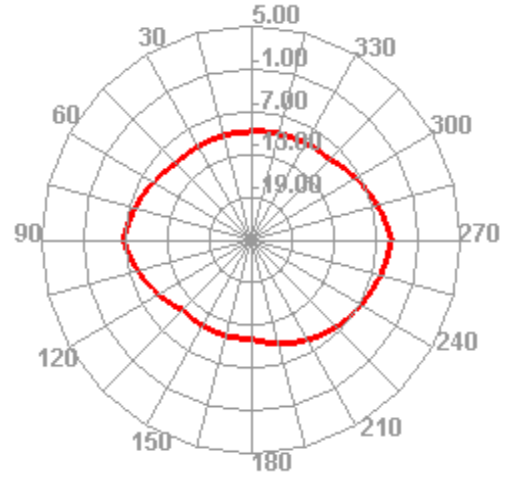
1730.000MHz E2



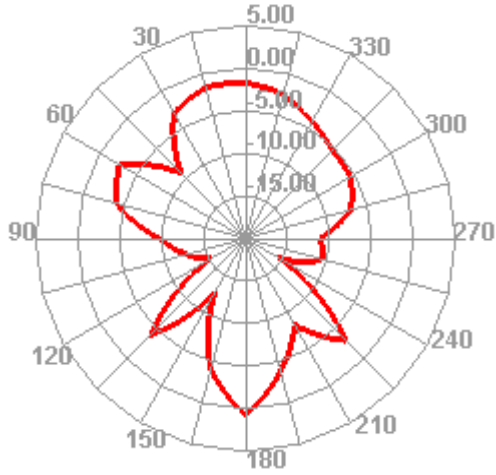
1910.000MHz



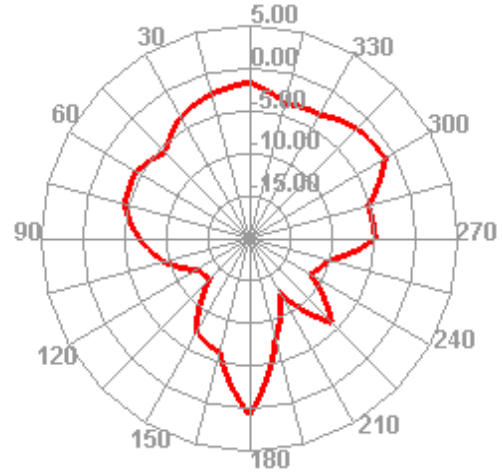
1910.000MHz H



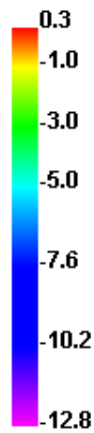
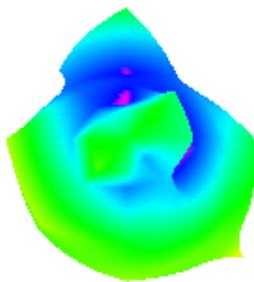
1910.000MHz E1



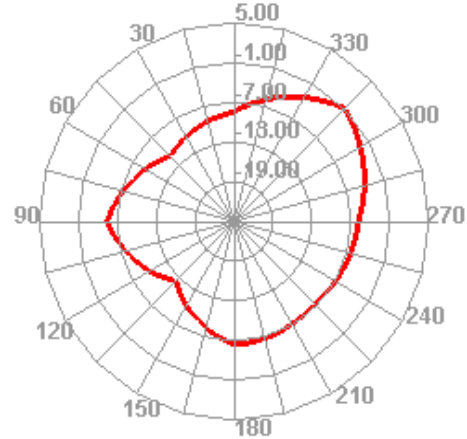
1910.000MHz E2



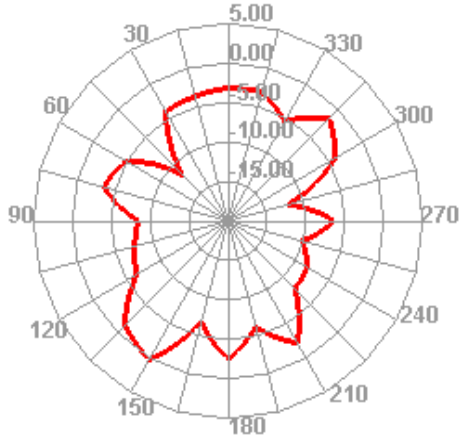
2170.000MHz



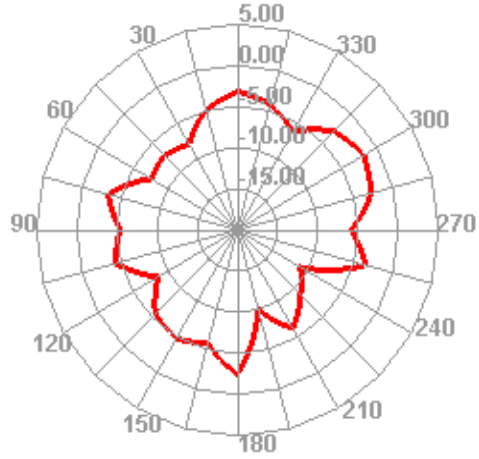
2170.000MHz H



2170.000MHz E1

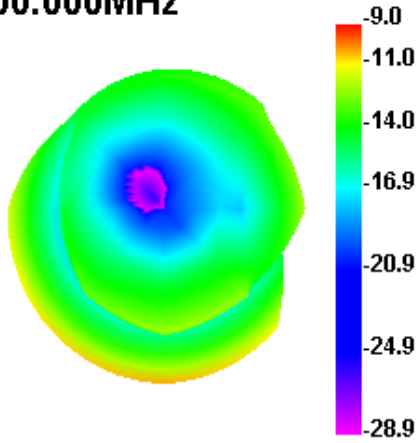


2170.000MHz E2

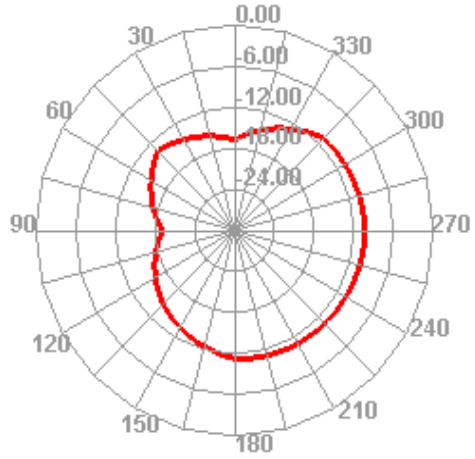


Diversity Antenna

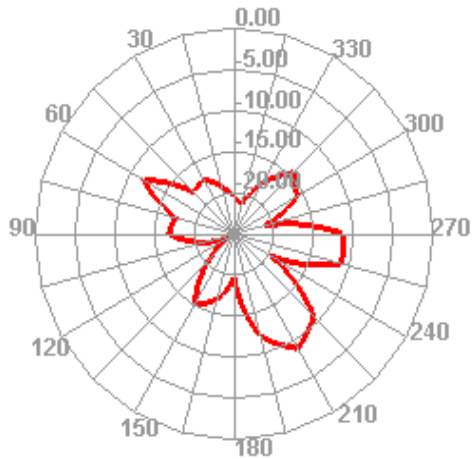
800.000MHz



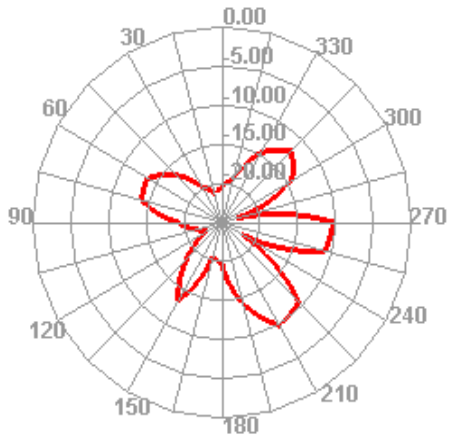
800.000MHz H



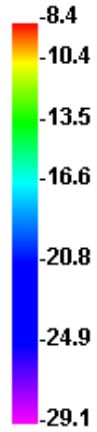
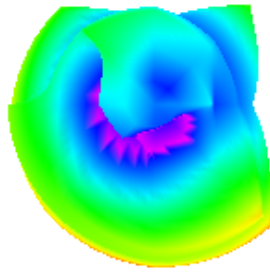
800.000MHz E1



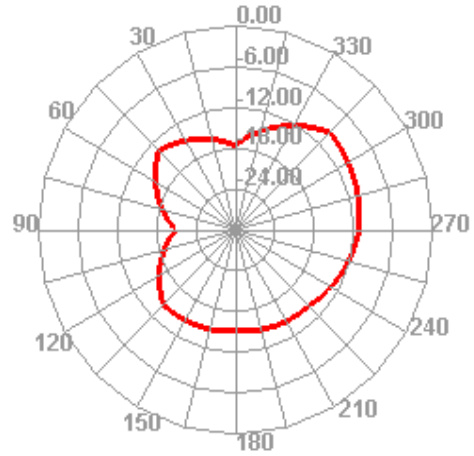
800.000MHz E2



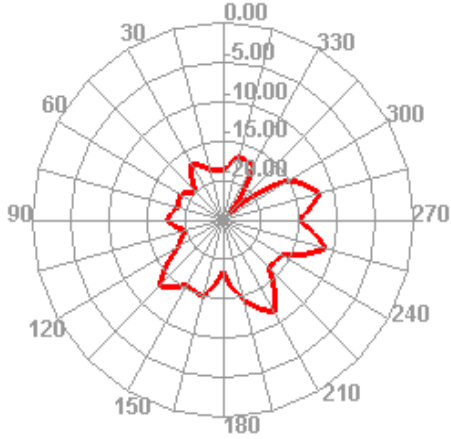
900.000MHz



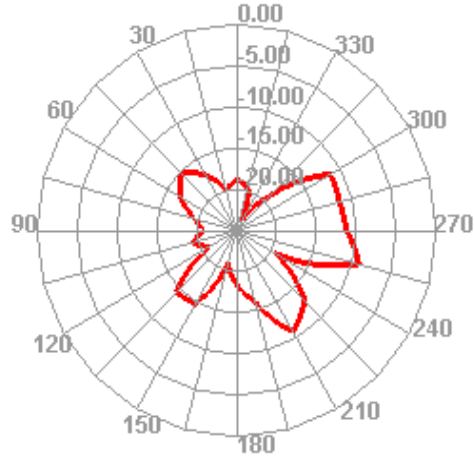
900.000MHz H



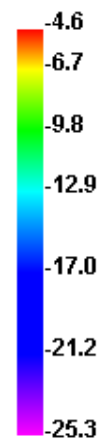
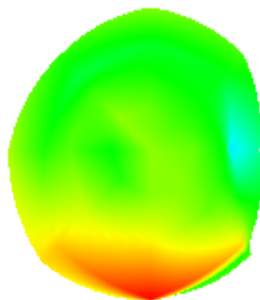
900.000MHz E1



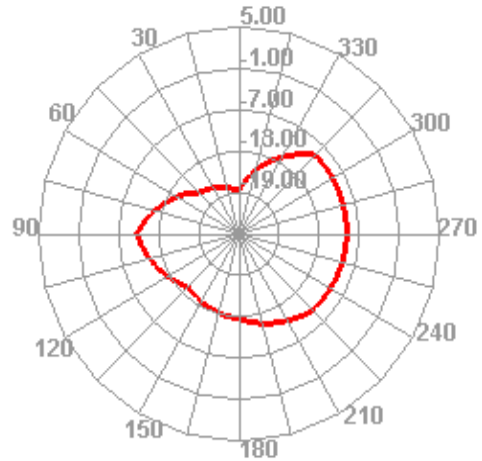
900.000MHz E2



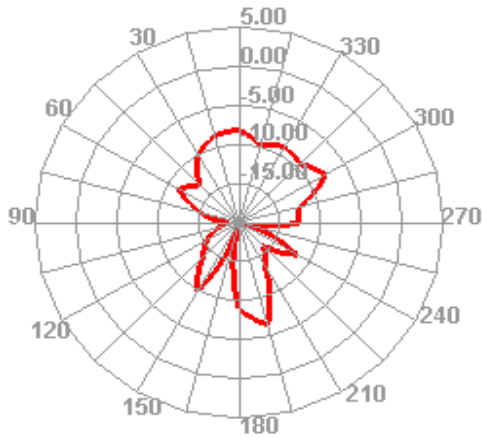
1910.000MHz



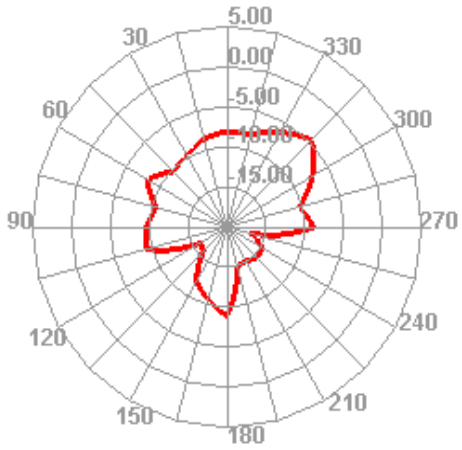
1910.000MHz H



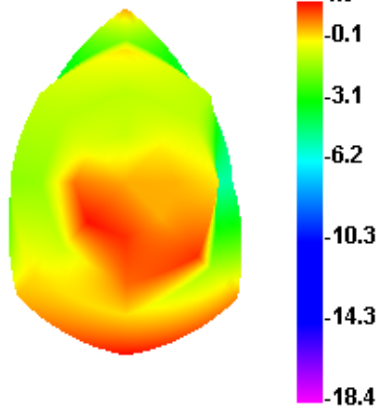
1910.000MHz E1



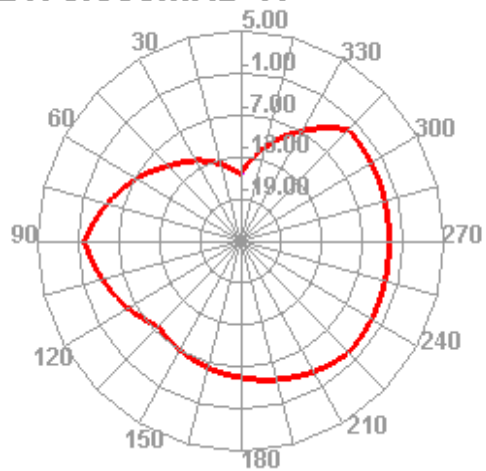
1910.000MHz E2



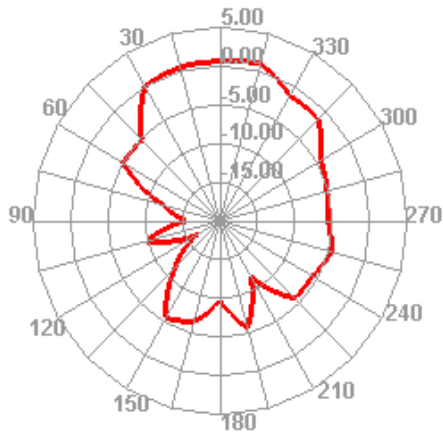
2170.000MHz



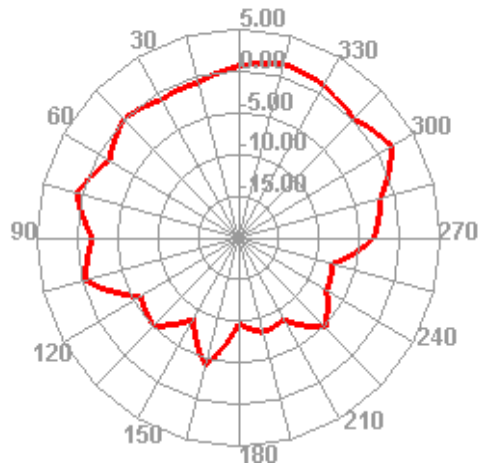
2170.000MHz H



2170.000MHz E1

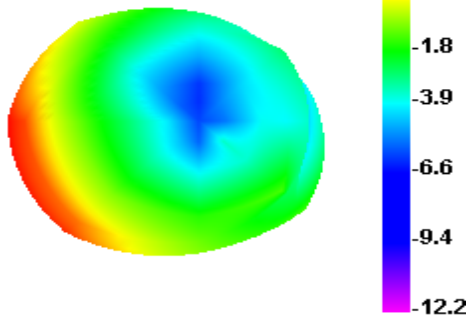


2170.000MHz E2

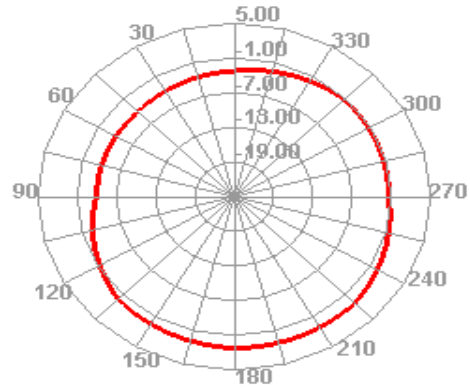


WiFi Antenna

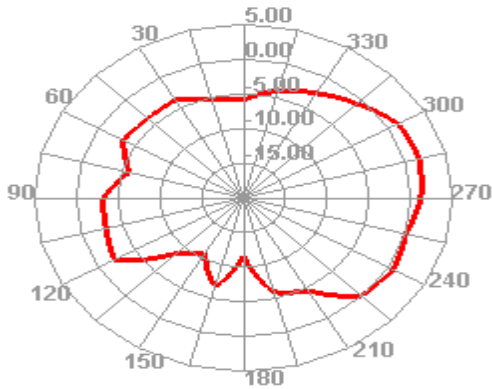
2400.000MHz



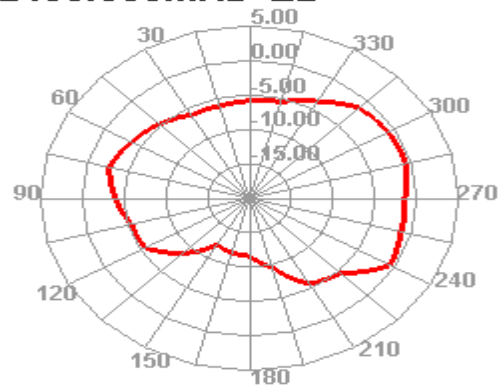
2400.000MHz H



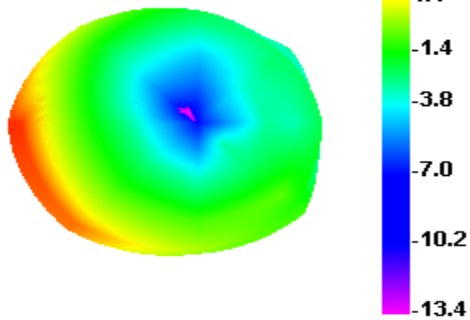
2400.000MHz E1



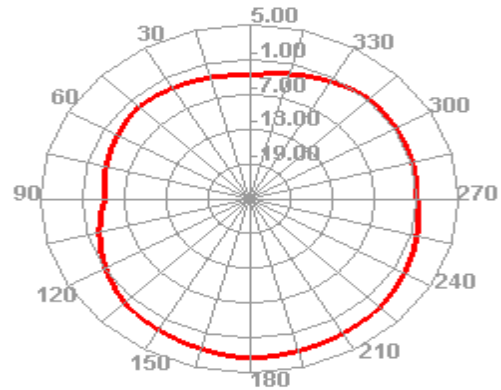
2400.000MHz E2



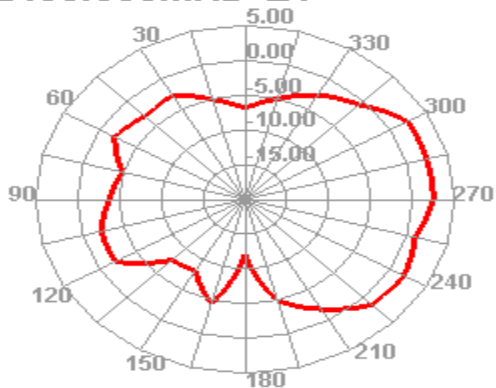
2450.000MHz



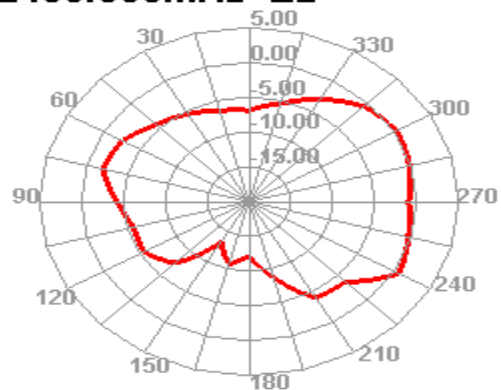
2450.000MHz H



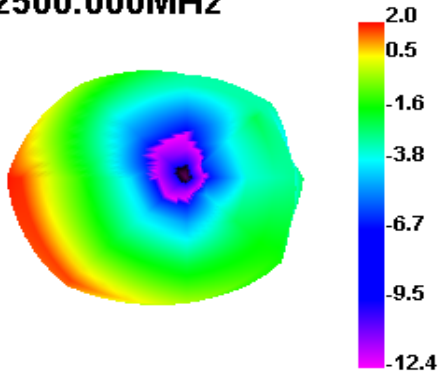
2450.000MHz E1



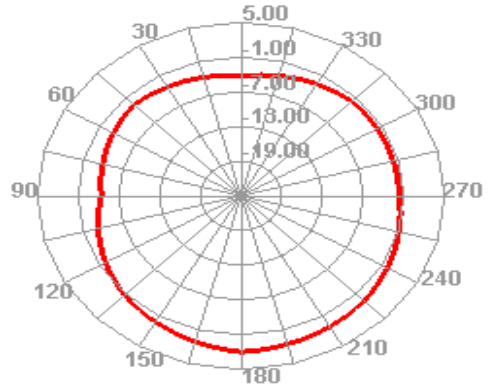
2450.000MHz E2



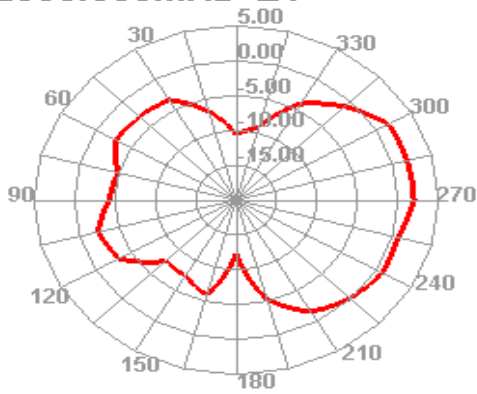
2500.000MHz



2500.000MHz H



2500.000MHz E1



2500.000MHz E2

