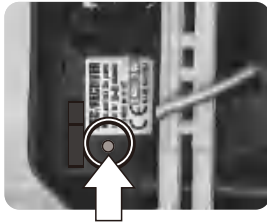


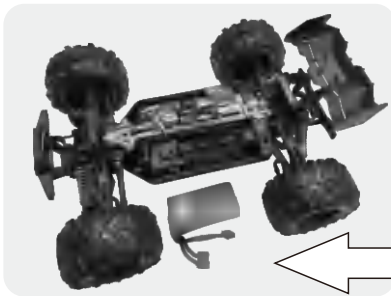
End the operation of the model car

- 1** Turn off the power switch of the model car and the power switch of the remote control



Press and hold the power switch of the model car for 2-3 seconds to turn off the power of the model car, and the power indicator of the model car will be off. Then turn off the model car switch.

- 2** Check and clean up



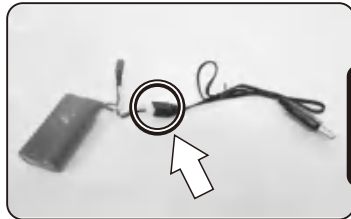
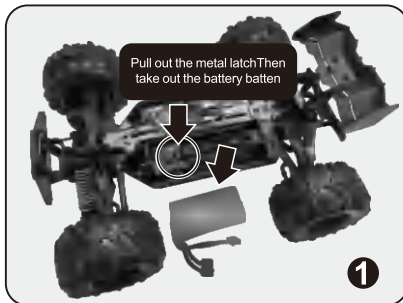
Check whether the model car has damaged and loose parts, please repair or replace them in time. After cleaning the body dirt with soft brush and soft cloth, store it in a cool place, away from high temperature and heat source, and away from the reach of children.

Please take the battery out of the model car and store it in a cool place.

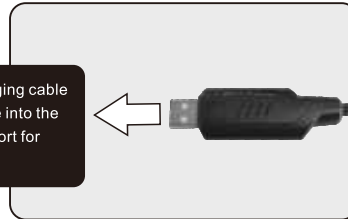
Maintenance of the model car

- 1.If you do not use it for a long time, please take out the batteries inside the model car and remote control.
- 2.Before each use, make sure the battery is fully charged.
- 3.Before or after each use, check carefully if the circuit wiring of the model car is tight and there are no disconnected joints. Check the wheels carefully to make sure they are tight. Loose wheels can cause excessive wear on the drive shaft, wheel cups or wheel seats and other parts.
- 4.Check if the drive gear needs to be lubricated.
- 5.Idle batteries need to be charged (charged to 50-60% power) and stored in a dry, cool place, away from children's reach.
- 6.After each use, please check carefully whether the parts of the model car are complete and repair or replace them in time. Use a fine brush to clean the sand, dirt and other dirt inside the model car, and then wipe it with a soft cloth.

Model car battery charging



Connect the USB charging cable and plug the USB cable into the USB charging device port for charging.



Remove the battery as shown in the picture.

Connect the USB charging cable and plug the USB cable into the USB charging device port for charging.

Charging time is approximately 3.5 hours.

USB indicator light Description.

- 1) When standby (when USB is plugged in and no battery is connected), the red light (power light) is always on, and the green light (charging light) flashes fast for a few seconds and then goes out.
- 2) When the battery is charging, the red light (power light) is always on, and the green light (charging indicator) flashes slowly and frequently, indicating that the battery is charging normally.
- 3) When the battery is fully charged, the red light (power light) turns off and the green light stops flashing and turns to a constant light.



The charging operation can be completed by connecting the phone charging configuration plug (standard 5V, 2A) in order to shorten the charging time.

Warm reminder



WARNING!

Do not use non-factory version of rechargeable batteries to avoid damage to the model car performance. Do not leave unattended while charging.

Children should be able to charge under adult guidance and supervision. Do not use batteries that are leaking or in damaged packaging.

Note: Please fully charge the battery before each use. When the speed of the model car decreases significantly, it is recommended to charge the battery of the model car immediately to avoid over discharging and damaging the battery. If the battery is idle for a long time, it needs to be charged regularly for about 1-2 weeks.

Model car common problems and troubleshooting

product	Failure phenomenon	Analysis of faults	Troubleshooting
Remote control	1. Power indicator light is not on	The battery is not charged or the battery is installed incorrectly	Replace the battery with a new one or check the positive and negative battery poles
	2. Power indicator frequency slow flashing	Battery power is not enough	Replace the battery with a new one
	3. The indicator light is on normally but the model car cannot be operated or the operation is delayed	a) There may be other running electronic products around the remote control frequency interference b) There may be high-voltage lines or other high-power transmitters nearby	Restart the model car and replace the remote control with another site
	4. The model car runs on its own without using the remote control	Potentiometer deviates from the neutral position	Restart the model car and remote control
Model car	1. The indicator light does not light up after the power is turned on	The battery is dead or the battery is installed incorrectly or the circuit wiring is broken	Replace the battery with a charged one, check if the battery and wiring are damaged
	2. Abnormal steering or malfunction	Check for debris blocking the steering structure, or damaged steering components or servos	Check all parts and replace any damaged or worn parts
	3. Can steer, but cannot go forward or backward.	1) Insufficient battery power	Replace with a charged battery
		2) Transmission parts are damaged or blocked by debris	Clean and replace parts
3) ESC function is abnormal		Replace ESC	
4. The model car is noisy when driving	Check whether there are debris blocking transmission parts, or transmission parts are damaged or fallen off, and check the motor teeth and big gear meshing, check and analyze whether the differential and big gear have appeared sweeping teeth, chipped teeth and other phenomena	Clean up the debris, check whether the transmission parts are intact, and ensure that the motor teeth and large gear mesh reasonably and do not slip loosely. Replace the damaged gear in time	

Note: The content of this product manual is for reference only. The manufacturer has the right to make changes or adjustments to the product without further notice, please refer to the actual sales.

NO.SG116MAX (Brushless version)



NO.SG116PRO (Carbon brush version)



Note: In order to comply with the packaging regulations, compressed packaging volume, the tailgate factory removed. Please install it yourself before use!

Installation of model car lights

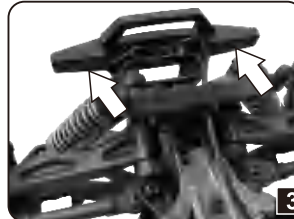
Note: The front lights (part number: 6054)



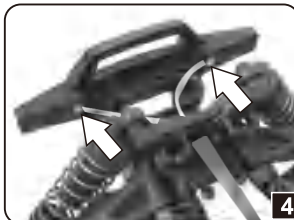
1



2



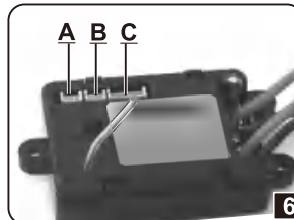
3



4



5



6

As shown in the picture, loosen the two screws respectively and remove the two pieces of headlight panel cover. Insert the headlight, put back the two headlight plate covers, and lock the two screws separately to fix them. Pay attention to the beautiful alignment of the headlight wires. Plug the headlight panel into the socket of the lamp holder on the one-piece brush ESC.

Introduction of the lampholder socket on the integrated brush ESC:

Socket A: Lampholder socket

Socket B: Lampholder socket

Socket C: Servo connector socket

NOTE: This equipment has been tested and found to comply with the limits for a Class B digital device, pursuant to part 15 of the FCC Rules. These limits are designed to provide reasonable protection against harmful interference in a residential installation. This equipment generates, uses and can radiate radio frequency energy and, if not installed and used in accordance with the instructions, may cause harmful interference to radio communications. However, there is no guarantee that interference will not occur in a particular installation. If this equipment does cause harmful interference to radio or television reception, which can be determined by turning the equipment off and on, the user is encouraged to try to correct the interference by one or more of the following measures:

- Reorient or relocate the receiving antenna.
- Increase the separation between the equipment and receiver.
- Connect the equipment into an outlet on a circuit different from that to which the receiver is connected.
- Consult the dealer or an experienced radio/TV technician for help.

Changes or modifications not expressly approved by the party responsible for compliance could void the user's authority to operate the equipment.

This device complies with Part 15 of the FCC Rules. Operation is subject to the following two conditions:

- (1) this device may not cause harmful interference, and
- (2) this device must accept any interference received, including interference that may cause undesired operation.