

FRAGFX™ FRAGCHUCK - WIRELESS CONTROLLER

ENGLISH

Thank you for purchasing the FragFX FragChuck (FragChuck) for PC and MAC.

Please read this short instruction before using it the first time.

Further information can also be found on www.splitfish.com

HAPPY FRAGGING!

CONTENT OF DELIVERY

1x FragChuck, 1x Dongle, 1x microfiber bag for storage

SUPPORTED OPERATING SYSTEMS

Windows XP, Vista, Windows 7, Windows 8.x, Windows 10, MAC iOS

GETTING THE FRAG CHUCK READY

- 1) insert one AA battery* into the FragChuck
- 2) move the switch on the Dongle to 'keyboard', plug it into a PC/MAC USB port
- 3) switch the FragChuck ON (ON switch on FragChuck)
- 4) the blue LED on the dongle lights permanently and your FragChuck is connected

* use Alkaline or NiMH rechargeable batteries with 2000 mAh for best performance.

PREDEFINED BUTTONS

Buttons are pre-set by default according to the graphics overleaf. However, buttons can be re-programmed; either 'in-game' (i.e. within the settings of the game) or alternatively by direct button remap on the FragChuck. See below section 'button remapping' in 'programming special functions'.

OTHER PERIPHERALS

You can use any peripheral parallel with your FragChuck, be it a traditional keyboard or a gamepad. Of course with the mouse or joystick of your choice. The FragChuck can always be used.

PROGRAMMING SPECIAL FUNCTIONS (PC, MAC)

Special functions are programmed via the D-pad

Special functions are activated by pressing F (FRAG button) and TAB. After pressing the FRAG button + TAB the LED's on the FragChuck light up (special functions cannot be programmed to FRAG und TAB buttons). Special functions can be programmed anytime, no need to do it in-game.

SPECIAL FUNCTION	PROGRAMMING	LED-STATUS
BUTTON REMAPPING	1) FRAG button + TAB	slow blinking
	2) press D-pad DOWN for button remapping	constant light
	3) press the 2 buttons that you want to remap, i.e.: 1 & 2	slow glowing
	4) FRAG button + TAB to save the setting	fast glowing

--> to remap (swap) more than 2 buttons keep repeating step 3) **before** saving (step 4)

MACRO (3 macros à 10 actions)	1) FRAG button + TAB	slow blinking
	2) press D-pad LEFT for macro	constant glowing
	3) choose and press the button that shall trigger the macro	slow glowing
	4) press the sequence of macro (max. 10 buttons)	fast blinking
	5) FRAG button + TAB to save the macro	

--> you can program 3 macros. A fourth macro overwrites the oldest (first) macro.

ERASE A SINGLE FUNCTION	1) FRAG button + TAB	slow blinking
	2) press D-pad (UP/DOWN/LEFT/RIGHT) – depending on the function to erase	constant blinking
	3) press FRAG button + TAB to confirm	

RECONNECT THE FRAGCHUCK TO THE DONGLE

In case the FragChuck loses the connection to the Dongle it can be paired by the following steps:

1) Disconnect the FragChuck:

- switch ON your FragChuck
- press the following buttons simultaneously: F, 1, 2, TAB, ESC, V (analog stick)
- switch the FragChuck OFF and ON again. The blue LED should be blinking.
- your FragChuck is now unpaired and ready to be paired again

2) Re-Connect the FragChuck

- plug the dongle into the PC/MAC
- hold the FragChuck close to the dongle (~ 10cm/4 inch) and press 1
- the LED on the FragChuck dims out and the blue LED on the dongle should light up
- switch the FragChuck OFF and ON - it should be working!

In case it does not work out on the first try please repeat the procedure.

OTHER SETTING ON THE DONGLE

'gamepad mode' is used for gamepad functions on PC/MAC for games that support gamepads - or on the Playstation 3. However, the available buttons are probably not sufficient and it would need a compatible mouse to complete the set. This could be obtained from www.splitfish.com.

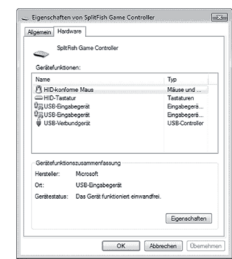
However, for PC/MAC use we recommend you use the FragChuck in Keyboard Mode with your preferred gaming mouse.

In order to change from 'Gamepad Mode' to 'Keyboard Mode' (or the other way round) the dongle needs to be unplugged. Then use the switch for the desired position.

The wheel on the FragChuck (adjustment) is not being used on PC/MAC (it's used on PS3 to tune the sensitivity)

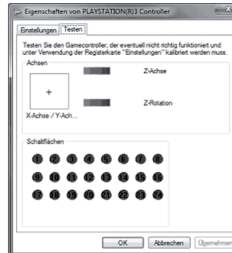
CONTROL PANEL IN KEYBOARD MODE

Below is a screenshot on how your FragChuck appears in your system setting. Please note that when using it for the first time, drivers install automatically. The buttons on your FragChuck act now as your keyboard.



CONTROL PANEL IN GAMEPAD MODE

When in gamepad mode your FragChuck appears as below in your control panel. Drivers install automatically upon first usage. Your FragChuck can now be used as a gamepad.



CARE AND MAINTENANCE

Use a dry dust free towel to clean your FragFX FragChuck. Do not use any chemicals!

WARRANTY AND CONDITIONS

General legal regulations for guarantee and warranty apply.

The whole product shall not be amended, changed, modded etc. and the shell shall not be opened!

- please adhere to the safety instructions and warnings of the manufacturer of the devices that you are connecting the FragChuck with. In case of doubt read the corresponding manual.
- this is not a toy, keep away from children.
- do not expose to high temperatures, humidity and strong vibrations..
- general warranty regulations of the applicable legislator apply.

Art of Play GmbH warrants to the original end user („Customer“) that new SplitFish Gameware branded products will be free from defects in workmanship and materials, under normal use, for one year from the original purchase date, or the minimum guarantee period as set out by the applicable legislator, whichever is longer.

Exclusions: This warranty excludes (1) physical damage to the surface of the product; (2) replacement or repair of the wires; (3) Water or fluid related damage; (4) damage caused by misuse, neglect, improper installation or testing, unauthorized attempts to open, repair or modify the product; or any other cause beyond the range of the intended use; (5) damage caused by accident, fire, power changes other hazards, or acts of god; or (6) use of the product with any non-fossil device or service if such device or service causes the problem. This warranty is limited to the hardware only.

Replacement: Products or parts may be new or reconditioned or comparable versions of the defective item. Art of Play GmbH warrants any replaced or repaired product, or part for a period of forty-five (45) days from shipment, or through the end of the original warranty, whichever is longer. Customers must provide dated proof of purchase (as stated below) in order to receive warranty protection through the end of the original warranty period..

Obtaining warranty service: Customer must contact technical support via www.splitfish.com resp. support@splitfish.com within the applicable warranty period to obtain warranty or non-warranty service.

LINK TO CLAIM WARRANTY/SERVICE:

[HTTP://SUPPORT.SPLITFISH.COM](http://SUPPORT.SPLITFISH.COM)

COPYRIGHT © 2012-19 ART OF PLAY GMBH.
SPLITFISH, SPLITFISH GAMEWARE AND FRAGFX™ ARE TRADEMARKS
OF ART OF PLAY GMBH.
ALL OTHER TRADEMARKS ARE PROPERTY OF THEIR RESPECTIVE OWNERS.
PATENT PENDING. ALL RIGHTS RESERVED.

Manufactured by
Art of Play GmbH
Langmauerstrasse 70
CH-8006 Zurich

support@splitfish.com

Distributed by
Art of Play GmbH
Distribution Centre EU
Spinnergasse 1
A-6850 Dornbirn
sales@splitfish.com / www.splitfish.com

Distribution outside of Europe:
Ikertec Ltd., Kowloon, Hong Kong

www.splitfish.com



FCC Warning

This device complies with Part 15 of the FCC Rules. Operation is subject to the following two conditions:

(1) This device may not cause harmful interference, and (2) this device must accept any interference received, including interference that may cause undesired operation.

NOTE 1: This equipment has been tested and found to comply with the limits for a Class B digital device, pursuant to part 15 of the FCC Rules. These limits are designed to provide reasonable protection against harmful interference in a residential installation. This equipment generates, uses and can radiate radio frequency energy and, if not installed and used in accordance with the instructions, may cause harmful interference to radio communications. However, there is no guarantee that interference will not occur in a particular installation. If this equipment does cause harmful interference to radio or television reception, which can be determined by turning the equipment off and on, the user is encouraged to try to correct the interference by one or more of the following measures:

- Reorient or relocate the receiving antenna.
- Increase the separation between the equipment and receiver.
- Connect the equipment into an outlet on a circuit different from that to which the receiver is connected.
- Consult the dealer or an experienced radio/TV technician for help.

NOTE 2: Any changes or modifications to this unit not expressly approved by the party responsible for compliance could void the user's authority to operate the equipment.

The device has been evaluated to meet general RF exposure requirement. The device can be used in portable exposure condition without restriction.