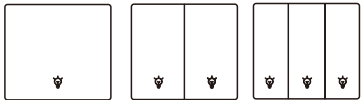


## 智能开关

### 蓝牙+WIFI

#### 使用说明书



#### 1 产品介绍

墙壁开关(蓝牙+WIFI智能开关)是一款采用蓝牙+WIFI通信协议的灯控开关。它安装方便,无需改动原有的照明设备和线路,直接替换传统开关,可以实现远程控制、定时控制、情景控制等功能,另外本产品可以搭配蓝牙智能音箱实现语音交互控制。

##### 安装注意事项

\*为了您的人身安全,请关闭总电源安装开关严禁带电安装,安装完成确认安全后才可以打开总电源。

\*应由具有正式资格的专业人员按照电工规范和产品说明书的要求进行安装及调试本产品。

\*本产品限室内使用,务必断电情况下安装,安装完毕后通电进行产品APP的配置。

#### 2 产品参数

工作电压:100V-240V~,50Hz/60Hz(零火线)

工作电流:10AMax(纯阻性负载)-零火线

负载类型:白炽灯300W/路、LED灯120W路、节能灯200W/路

产品材质:防火PC外壳

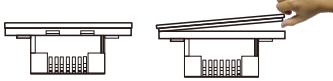
使用环境:温度0°C~40°C,相对湿度小于95%

通讯协议:蓝牙+WIFI

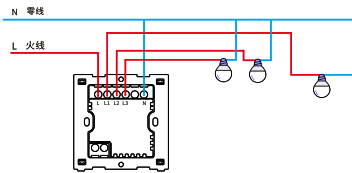
无线频率wif2.4Hzb/g/n,RF433

#### 2 安装指导(根据买的版本接线)

1.用手掰开按键面板。



#### 3 零火版开关接线方法



N为零线,L为火线输入,L1.L2.L3为控制灯线输出,(零线只能接在N点,不能接L.L123否则会造成短路)

#### 5 开关连网方法

1.扫描二维码下载APP或应用市场下载“涂鸦智能”或“智能生活”注册帐号并登录。



#### 6 注册或登录

1.下载涂鸦智能 或者 智能生活

2.进入注册/登录界面:点击“注册”通过输入您的电话号码来创建帐户以获取验证码和设置密码”。如果您已经拥有Smart Life帐户,请选择登录

**注意:**如果您已连接5G网络,请先断开5G网络并连接2.4G网络,正确填好2.4G的WIFI账号密码(不能用5G的WIFI)

#### 7 添加设备

按住开关的任意一键约7秒钟,直到开关上所有的蓝色指示灯在3秒钟后快速闪烁。则开关进入配网状态,可进行涂鸦APP或者 智能生活APP配网



1.点击涂鸦APP或者 智能生活APP右上角“+”进入添加设备页面,选择自动搜索设备或者手动添加设备。



2.确认开关蓝色指示灯快速闪烁(每秒两次) 选择WIFI配网或者蓝牙配网,再点击 确认指示灯闪烁,选择快闪。



3.根据您的网络状况,连接大约需要10~120秒内才能完成



4.配对完成后,开关将显示在应用程序上

#### 8 如何重置/重新配网

按住开关的任意一键约6~8秒钟,直到开关上所有的蓝色指示灯在3秒钟后快速闪烁,则开关重置成功/重新配网。

##### 随意贴配对/清码方法

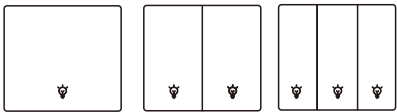
**配对:**开关通电后,按住开关上的按键3~5秒钟,直到开关上的白色指示灯快速闪烁后松手,并在10秒钟内按下要配对的随意贴的按键就可以控制,白色指示灯快速闪烁3下后灭,表示对码成功。(按键一一对配对)

**清码:**连续按开关上的按键五下,直到开关上的白色指示灯快速闪烁8下后灭,即清码。再按一下随意贴没反应就行了。(按键一对一清码)

## INTELLIGENT SWITCH

### Bluetooth+Wi-Fi

#### OPERATING INSTRUCTIONS



#### 1 Product Introduction

The wall switch (Bluetooth+WiFi intelligent switch) is a light control switch that uses Bluetooth+WiFi communication protocol. It is easy to install, without changing the original lighting equipment and wiring. It can directly replace traditional switches and achieve remote control, timing control, situational control, and other functions. In addition, this product can be paired with a Bluetooth intelligent speaker to achieve voice interaction control.

##### Installation precautions

\*For your personal safety, please turn off the installation switch of the main power supply. It is strictly prohibited to install with electricity. Only after confirming the safety of the installation can the main power supply be turned on.

\*This product should be installed and debugged by formally qualified professionals in accordance with the requirements of electrical specifications and product manuals.

#### 2 Product parameters

Working voltage: 100V-240V~, 50Hz/60Hz (zero live wire)

Working current: 10AMax (pure resistive load) - zero live wire

Load type: 300W circuit for incandescent lamps, 120W circuit for LED lamps, and 200W circuit for energy-saving lamps.

Product Material: Fireproof PC Shell

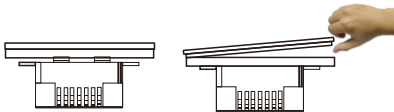
Operating environment: temperature 0°C~40°C, relative humidity less than 95%

Communication protocol: Bluetooth+WiFi

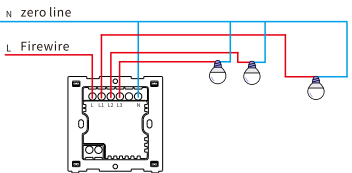
Wireless frequency WiFi 2.4Hzb/g/n, RF433

#### 3 Installation guide

1. Use your hand to break open the button panel.



#### 4 Wiring Method for Zero Fire Plate Switch



N is the zero line, L is the live line input, L1.L2.L3 is the control light line output, (the zero line can only be connected to point N and cannot be connected to L.L123, otherwise it will cause a short circuit)

#### 5 Switch networking method

1. Scan the QR code to download the app or application market, download "Doodle Intelligence" or "Smart Life", register an account and log in.



#### 6 Register or log in

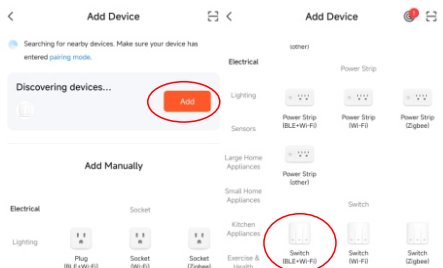
1. Download Graffiti Smart or Smart Life

2. Enter the registration/login interface: Click "Register" to create an account by entering your phone number to obtain a verification code and set a password. If you already have a Smart Life account, please choose to log in

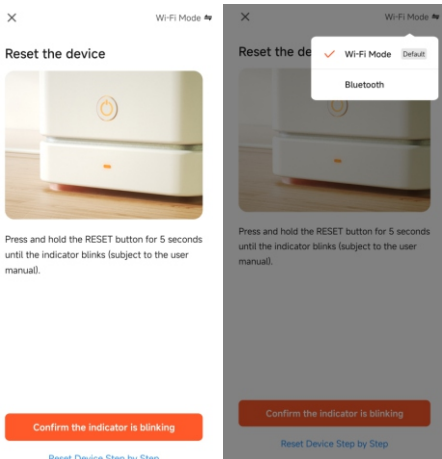
**Note:** If you are already connected to a 5G network, please disconnect the 5G network and connect to a 2.4G network first. Fill in the correct password for the 24G WF account (5G WF cannot be used)

#### 7 Add Device

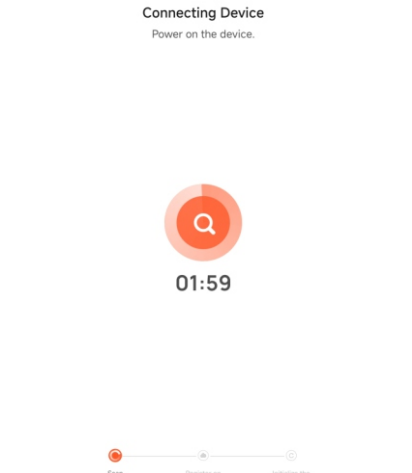
Press and hold any key of the switch for approximately 7 seconds until all blue indicator lights on the switch flash quickly after 3 seconds. Then the switch can enter the distribution network state for the graffiti app or smart life app distribution network



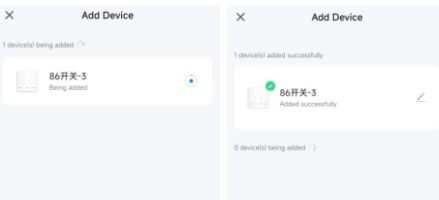
1. Click on the "+" button in the upper right corner of the doodle app or smart life app to enter the add device page, and choose to automatically search for devices or manually add devices.



2. Confirm that the blue indicator light on the switch flashes quickly (twice per second), select WF distribution network or Bluetooth distribution network, and then click to confirm that the indicator light flashes, and select Flash.



3. Based on your network condition, the connection will take approximately 10-120 seconds to complete



4. After pairing is completed, the switch will be displayed on the application program

#### 8 How to reset/redistribute the network

Press and hold any key of the switch for approximately 6-8 seconds until all blue indicator lights on the switch flash quickly after 3 seconds, indicating that the switch has been successfully reset/re wired

##### Random pairing/code clearing method

**Pairing:** After the switch is powered on, press and hold the button on the switch for 3-5 seconds until the white indicator light on the switch quickly flashes, then release. Within 10 seconds, press the button that you want to pair with randomly and control it. The white indicator light quickly flashes for 3 times and then goes out, indicating successful code matching. (Pairing keys one-on-one)

**Clear code:** Press the button on the switch five times continuously until the white indicator light on the switch quickly flashes 8 times and then goes out, which means clear code. Just click on it again and paste it without any response. (Press the button to clear the code one-on-one)

## FCC Information

This equipment has been tested and found to comply with the limits for a Class B digital device, pursuant to part 15 of the FCC Rules.

These limits are designed to provide reasonable protection against harmful interference in a residential installation. This equipment generates,

uses and can radiate radio frequency energy and, if not installed and used in accordance with the instructions, may cause harmful interference

to radio communications. However, there is no guarantee that interference will not occur in a particular installation. If this equipment does

cause harmful interference to radio or television reception, which can be determined by turning the equipment off and on, the user is

encouraged to try to correct the interference by one or more of the following measures:

- Reorient or relocate the receiving antenna.
- Increase the separation between the equipment and receiver.
- Connect the equipment into an outlet on a circuit different from that to which the receiver is connected.
- Consult the dealer or an experienced radio/TV technician for help.

This device complies with part 15 of the FCC Rules. Operation is subject to the following two conditions:

- (1) This device may not cause harmful interference, and
- (2) this device must accept any interference received, including interference that may cause undesired operation.

changes or modifications not expressly approved by the party responsible for compliance could void the user's authority to operate the equipment.

This equipment complies with FCC exposure limits set forth for an uncontrolled environment.

This equipment should be installed and operated with minimum distance of 20 cm between the radiator and your body.

This transmitter must not be co-located or operating in conjunction with any other antenna or transmitter.