

德元科技技术（深圳）有限公司  
Deyuan Technology (Shenzhen) Co., LTD

产品规格书  
Product Specification

产品名称 Product Number	2.4G&5.8G PCB 内置天线	编号 Serial Number	2021041601
产品型号 Product Type	AP477-2.4&5.8G-11185-1.13	版本号 Version Number	1.0
		物料编码 Material Number	

变更履历表  
Description Record

序号 NO:	版本号 Version number	更改前描述 Description Before Modification	更改后描述 Description After Modification	日期 Date
1	1.0	初始新建		2021.04.16

备注:

德元科技技术（深圳）有限公司

Tel: 0755-29015125

Email: [info@delincomm.com](mailto:info@delincomm.com) [support@delincomm.com](mailto:support@delincomm.com)

<https://www.delincomm.com>

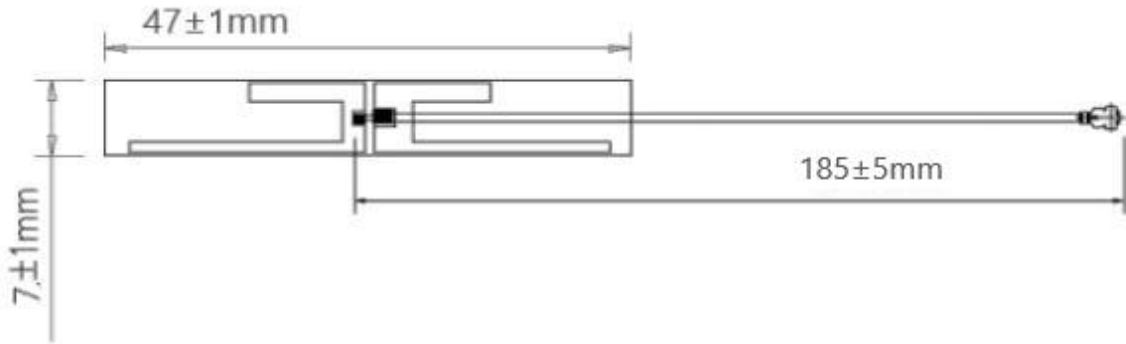
## 一、 产品介绍:

- 外观 精美
- 体积小
- 全天候工作
- 低驻波、抗干扰

## 二、 天线技术参数:

Design Specifications	Typical
天线形式	2.4G&5.8G PCB 内置天线
工作频率(Working Frequency)	2400-2500/5150-5850MHz
增益 (Gain)	>1.0dBi
天线效率 (Antenna efficiency)	40%
电压驻波比 (VSWR)	≤2.0
极化方式(Polarization)	垂直
辐射方向(Radiation pattern)	全向
馈电阻抗(Impedance)	50 Ω
功率容量(Power Capacity)	3W
天线接口(Interface)	IPEX I代
天线尺寸(Overall dimensions)	47*7mm
重量(Weight)	≤10g
工作温度(Operatin Temp)	-40°C~80°C
储存温度(Storing Temp)	-45°C~85°C

三、产品结构图纸(mm)：

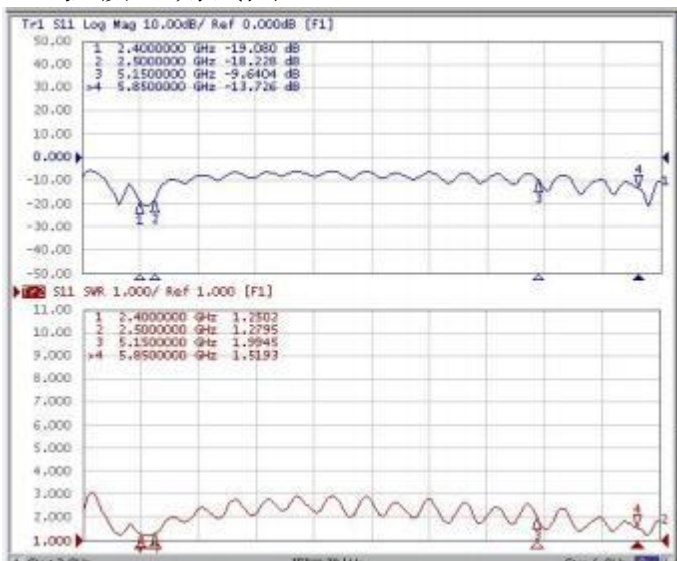


四、增益效率测试数据

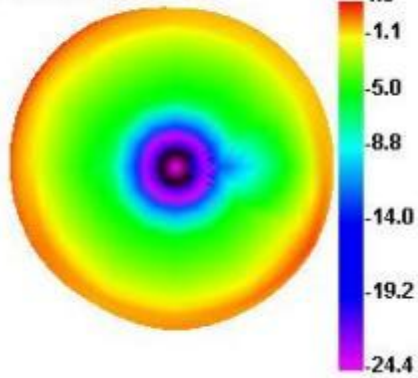
Passive Test For 2400-2500		
Freq (MHz)	Effi (%)	Gain (dBi)
2400	58.28	1.51
2410	57.11	1.82
2420	55.78	1.68
2430	58.01	1.7
2440	62.23	1.01
2450	67.64	1.27
2460	67.18	1.29
2470	63.67	1.08
2480	65.93	1.28
2490	67.39	1.51
2500	64.38	1.23

Passive Test For 5150-5850		
Freq (MHz)	Effi (%)	Gain (dBi)
5150	46.07	2.17
5220	50.8	2.1
5290	54.97	2.98
5360	47.38	2.94
5430	64.99	2.83
5500	53.78	2.82
5570	52.03	2.39
5640	44.08	2.95
5710	49.17	2.37
5780	50.34	2.3
5850	51.14	2.32

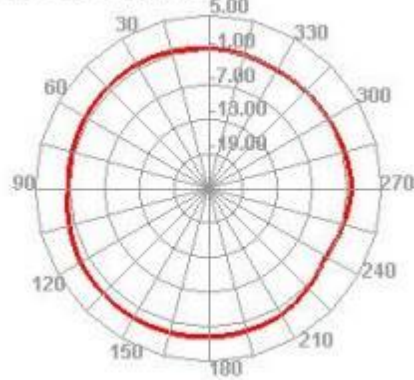
五、驻波比测试图



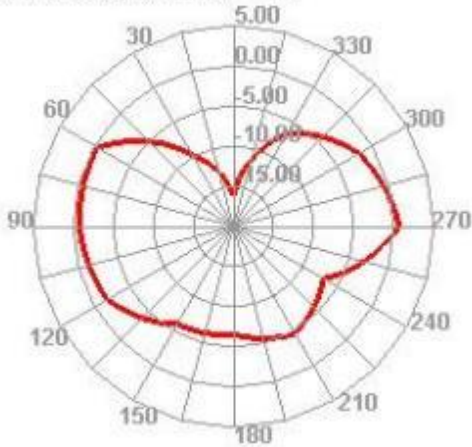
**2400.000MHz**



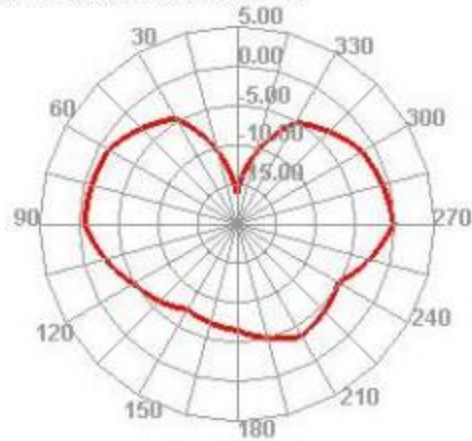
**2400.000MHz H**



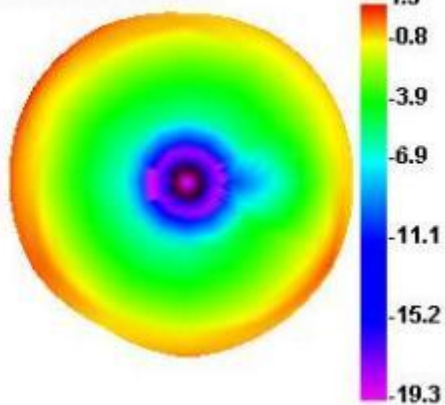
**2400.000MHz E1**



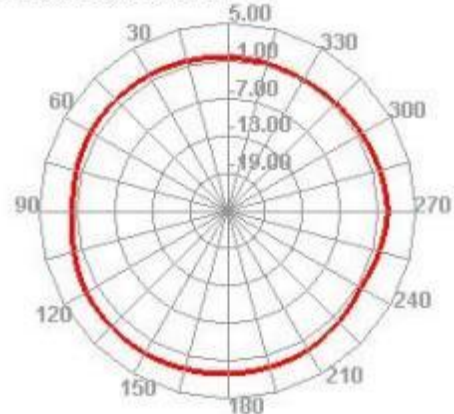
**2400.000MHz E2**



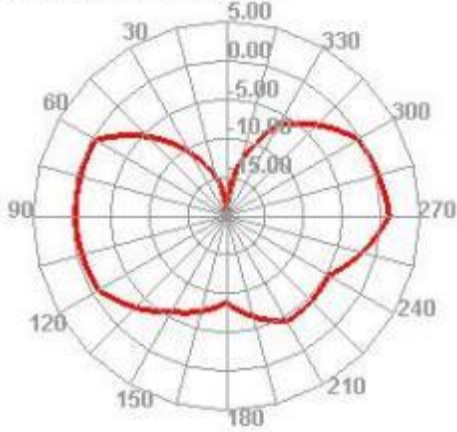
**2450.000MHz**



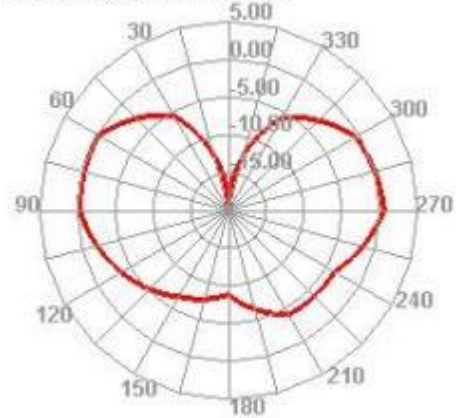
**2450.000MHz H**



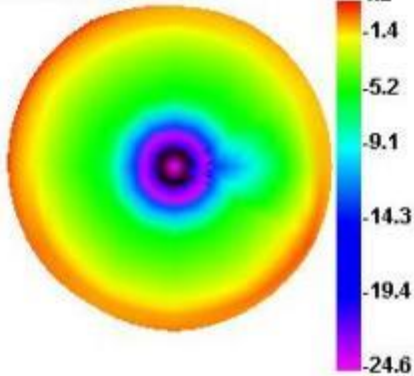
2450.000MHz E1



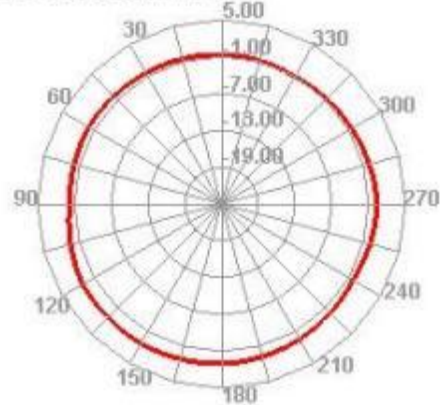
2450.000MHz E2



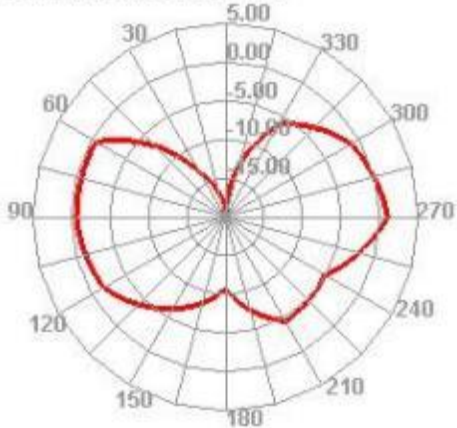
2500.000MHz



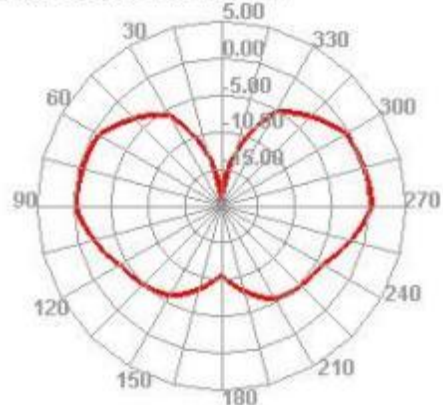
2500.000MHz H



2500.000MHz E1

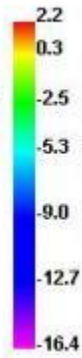
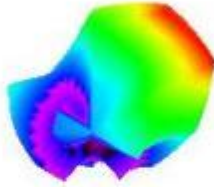


2500.000MHz E2

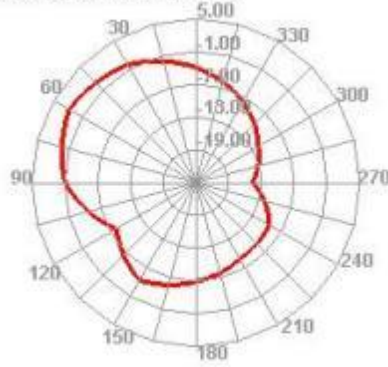




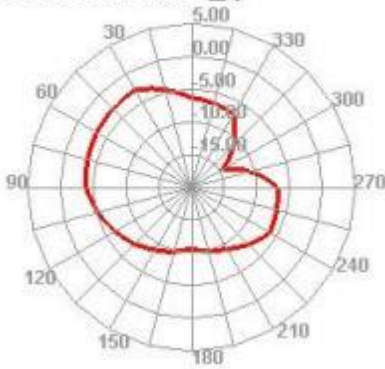
**5150.000MHz**



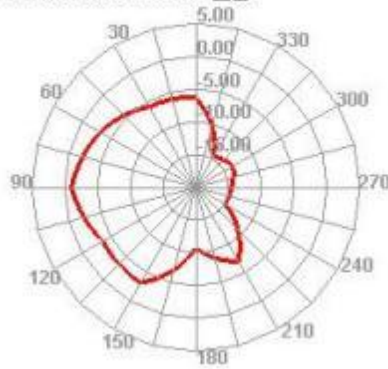
**5150.000MHz H**



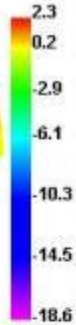
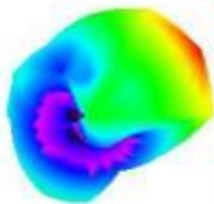
**5150.000MHz E1**



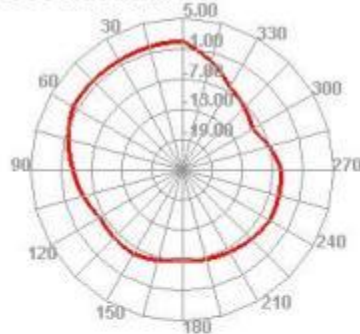
**5150.000MHz E2**



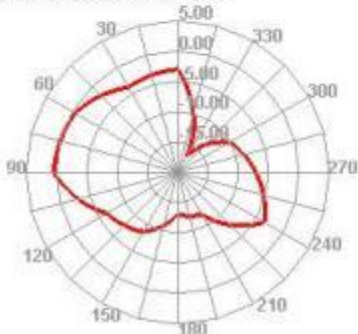
**5850.000MHz**



**5850.000MHz H**



**5850.000MHz E1**



**5850.000MHz E2**

