

# Antenna Measurement Report

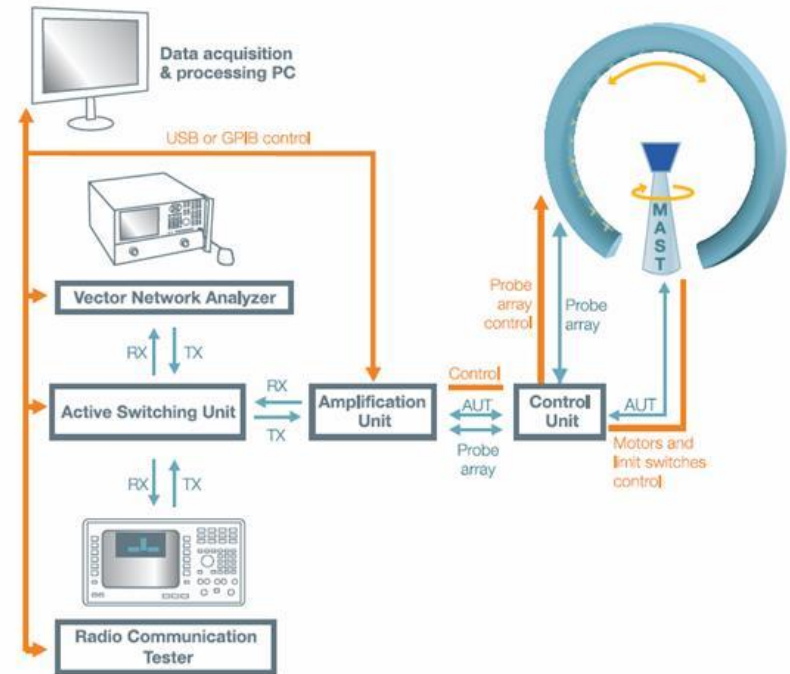
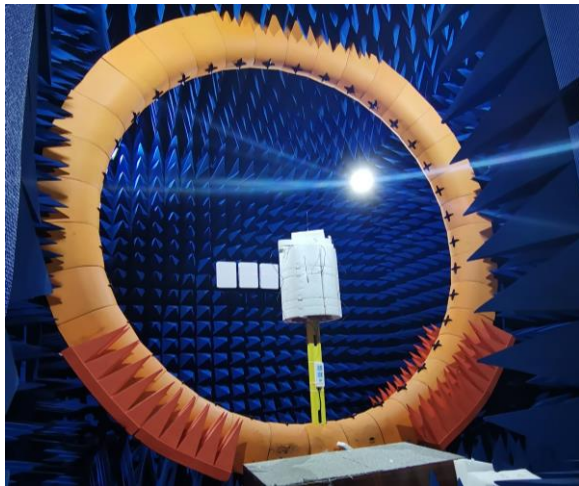
<b>Project name :</b>	<b>DN21C-156P2-SCD</b>
Type of antenna :	WIFI
Frequency range :	2.4-2.5G/5.15-5.85GHz
Redact :	蒋代铭
Approver :	
Version number :	V1.0
Date :	20230606

# 1. Test items and equipment

## Passive test item

## Active test item

1. S参数	网络分析仪E5071C	1. 整机辐射功率	Microwave chamber
2. 辐射参数	Microwave chamber 网络分析仪E5071B	2. 整机接收灵敏度	CMW500 MT8000A



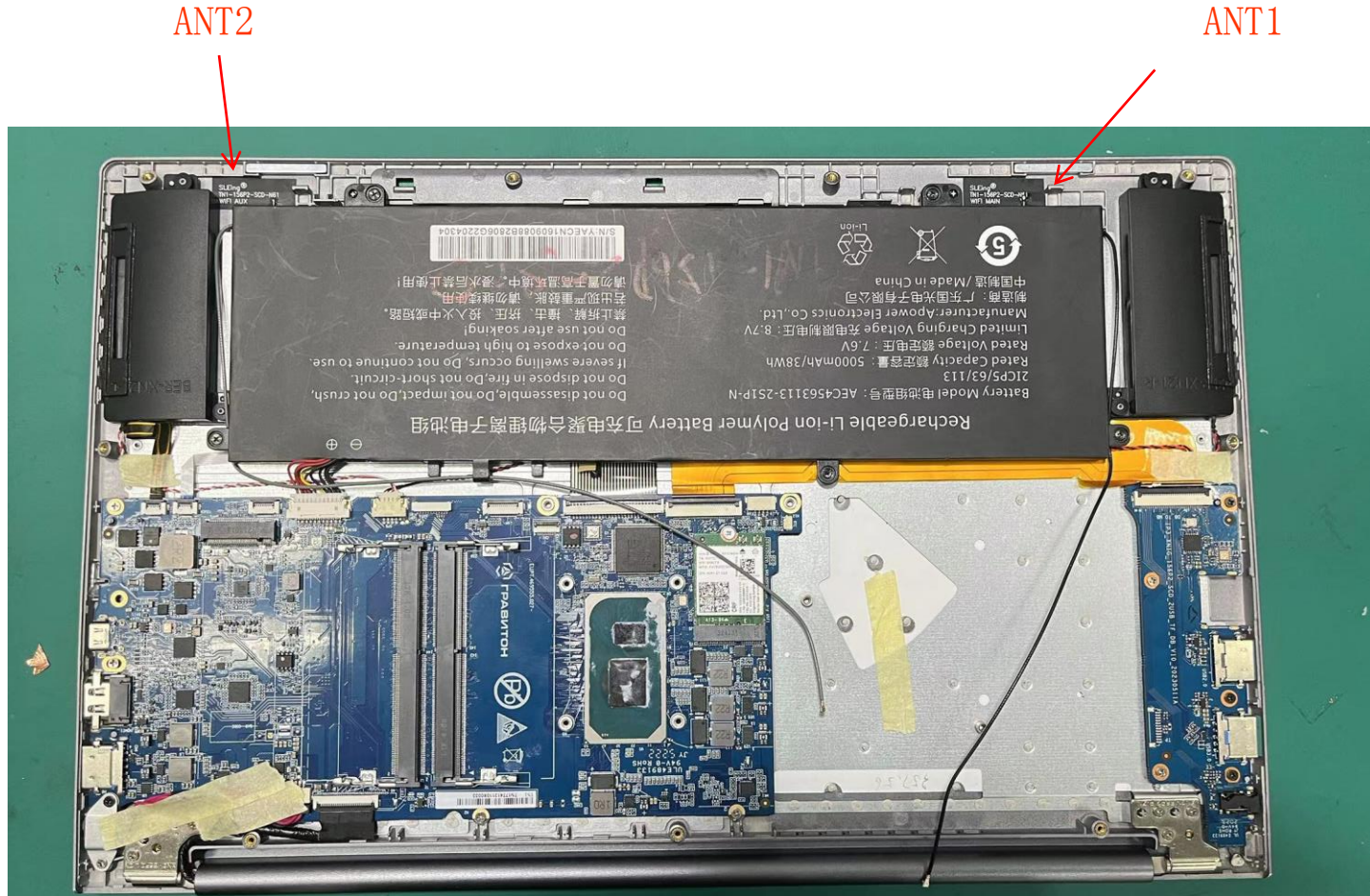
## 2. Product information

Product Name:	DN21C-156P2-SCD WIFI ANT
Part Number:	Main SLEingB241620230 AUX SLEingB241630310
Test frequency band:	2.4-2.5GHz 5.15-5.85GHz

### 3. Specifications

Rough description	WiFi ANT	Dimensions	
<b>Impedance</b>	50Ω	<b>Test environment</b>	None
<b>Application</b>	WIFI	<b>Freq. Range</b>	2.4-2.5G/5.15-5.85GHz
<b>Gain</b>	Peak gain: 4.30	<b>VSWR</b>	1.92: 1
<b>Radiation</b>		<b>Polarization</b>	linear
<b>Connector type</b>	HMF 4代	<b>Cable type</b>	None
<b>Isolation</b>	None	<b>Special request</b>	Main WiFi 1.13黑色230mm AUX WiFi 1.13灰色310mm

# 4.0 Antenna assembly instructions



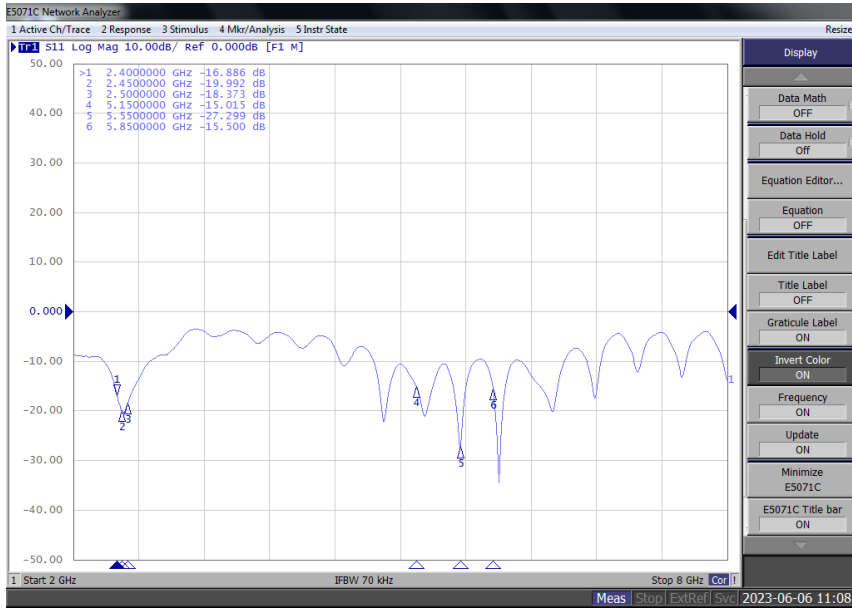


# 4.1 Antenna Assembly Instructions

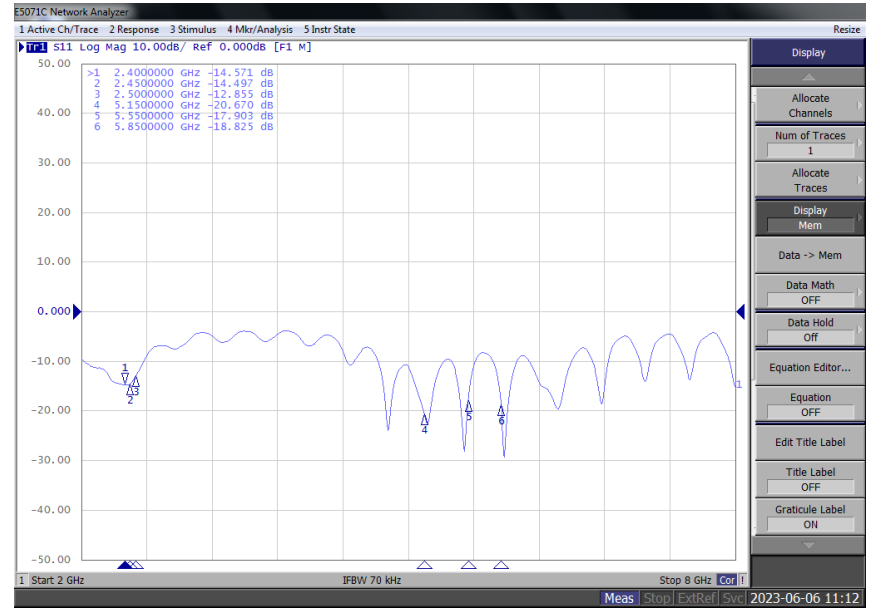
Edge alignment



# 5. The S parameter is 2.4/5.8G

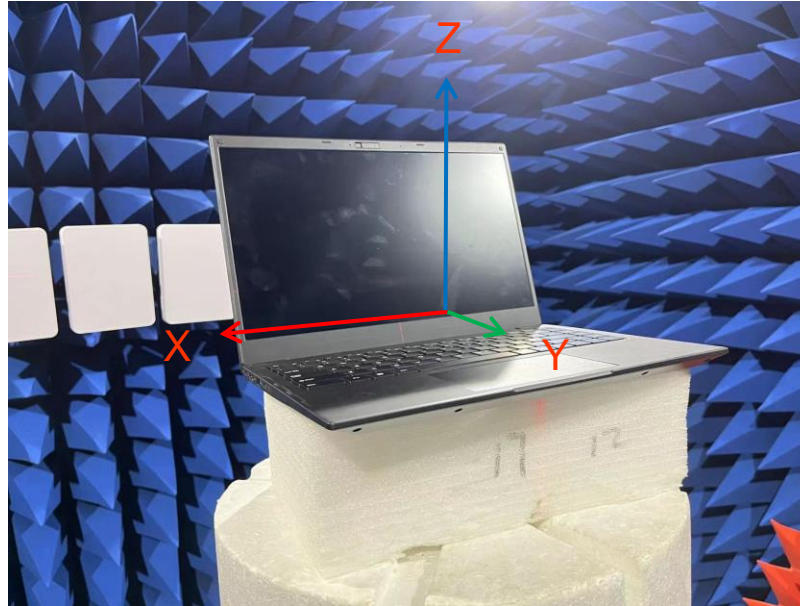


ANT1



ANT2

## 6. Test the environment and relative coordinates



\* This image represents only the relative coordinates indicated



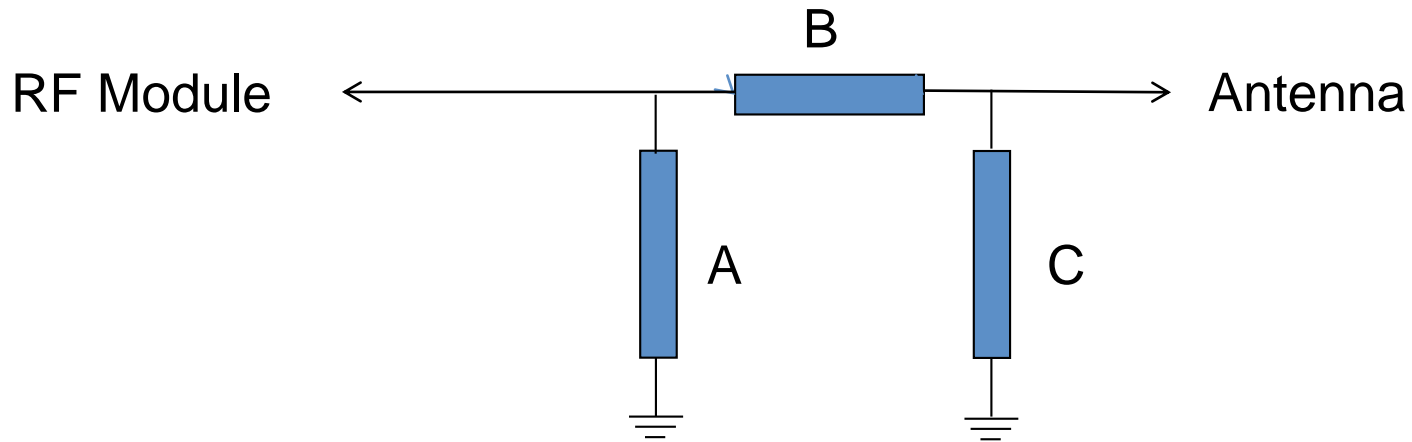
# 7. Passive data

## ANT1

Frequency ID	1	2	3	4	5	6	7	8	9	10	11	12	13
Frequency (MHz)	2400.0	2410.0	2420.0	2430.0	2440.0	2450.0	2460.0	2470.0	2480.0	2490.0	2500.0	5150.0	5200.0
Gain (dBi)	3.84	3.80	3.61	3.51	3.63	3.92	4.17	4.27	4.24	3.95	3.68	3.19	3.37
Efficiency (%)	53.04	53.06	54.12	55.09	56.55	57.56	58.27	58.08	58.11	57.20	57.61	41.49	41.81
	14	15	16	17	18	19	20	21	22	23	24	25	26
Frequency (MHz)	5250.0	5300.0	5350.0	5400.0	5450.0	5500.0	5550.0	5600.0	5650.0	5700.0	5750.0	5800.0	5850.0
Gain (dBi)	4.01	4.05	3.73	4.30	3.81	3.72	4.00	3.31	3.29	2.82	3.41	3.47	3.39
Efficiency (%)	43.09	43.46	40.10	42.74	40.75	41.30	42.53	39.25	39.17	37.35	38.67	38.67	39.93

## ANT2

Frequency ID	1	2	3	4	5	6	7	8	9	10	11	12	13
Frequency (MHz)	2400.0	2410.0	2420.0	2430.0	2440.0	2450.0	2460.0	2470.0	2480.0	2490.0	2500.0	5150.0	5200.0
Gain (dBi)	2.88	2.83	2.89	3.02	3.22	3.30	3.33	3.27	3.26	3.32	3.28	2.31	2.20
Efficiency (%)	41.04	40.18	40.45	40.07	40.67	40.22	40.44	39.61	39.08	38.84	39.22	35.60	34.96
	14	15	16	17	18	19	20	21	22	23	24	25	26
Frequency (MHz)	5250.0	5300.0	5350.0	5400.0	5450.0	5500.0	5550.0	5600.0	5650.0	5700.0	5750.0	5800.0	5850.0
Gain (dBi)	2.07	2.04	1.44	1.86	2.08	2.66	2.52	2.89	3.70	3.56	3.47	3.35	3.61
Efficiency (%)	36.08	36.14	34.02	36.22	34.93	33.60	34.01	31.99	34.14	34.51	35.24	34.11	33.02



Element	Value
A	NC
B	NC
C	NC

\* 设备为模块输出，匹配未作修改



1. The efficiency of passive antenna test is more than 30%.



