

Antenna Measurement Report

Project name :	DN21C-156P2-SCD
Type of antenna :	
Frequency range :	2.4-2.5G/5.15-5.85GHz
Redact :	蒋代铭
Approver :	
Version number :	V1.0
Date :	20230606

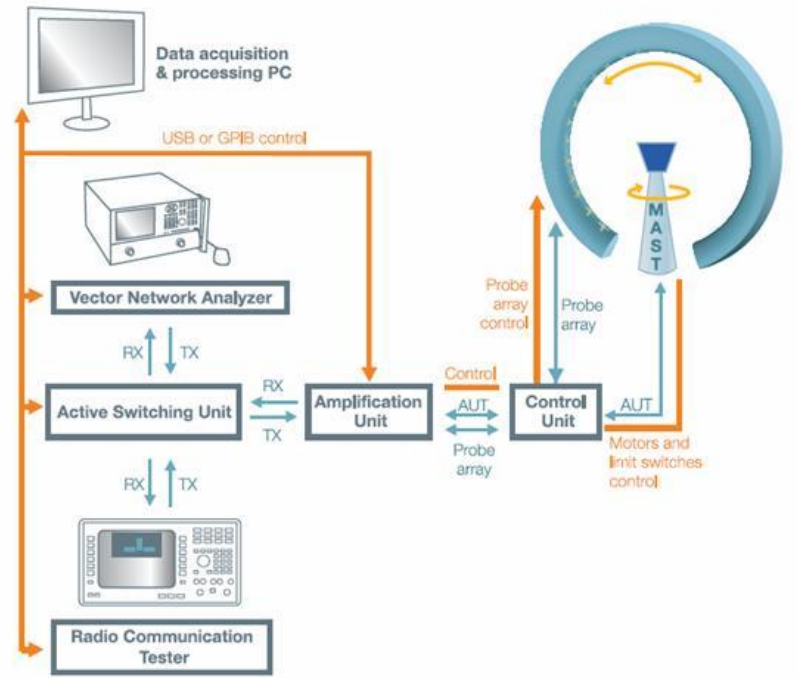
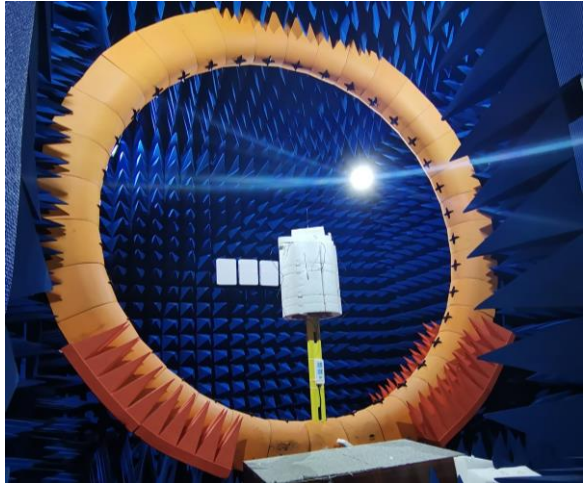
1. Test items and equipment

Passive test item

1. Parameter S	网络分析仪E5071C
2. Radiation parameters	Microwave chamber 网络分析仪E5071B

Active test item

1. Overall radiated power	Microwave chamber
2. Overall receiving sensitivity	CMW500 MT8000A



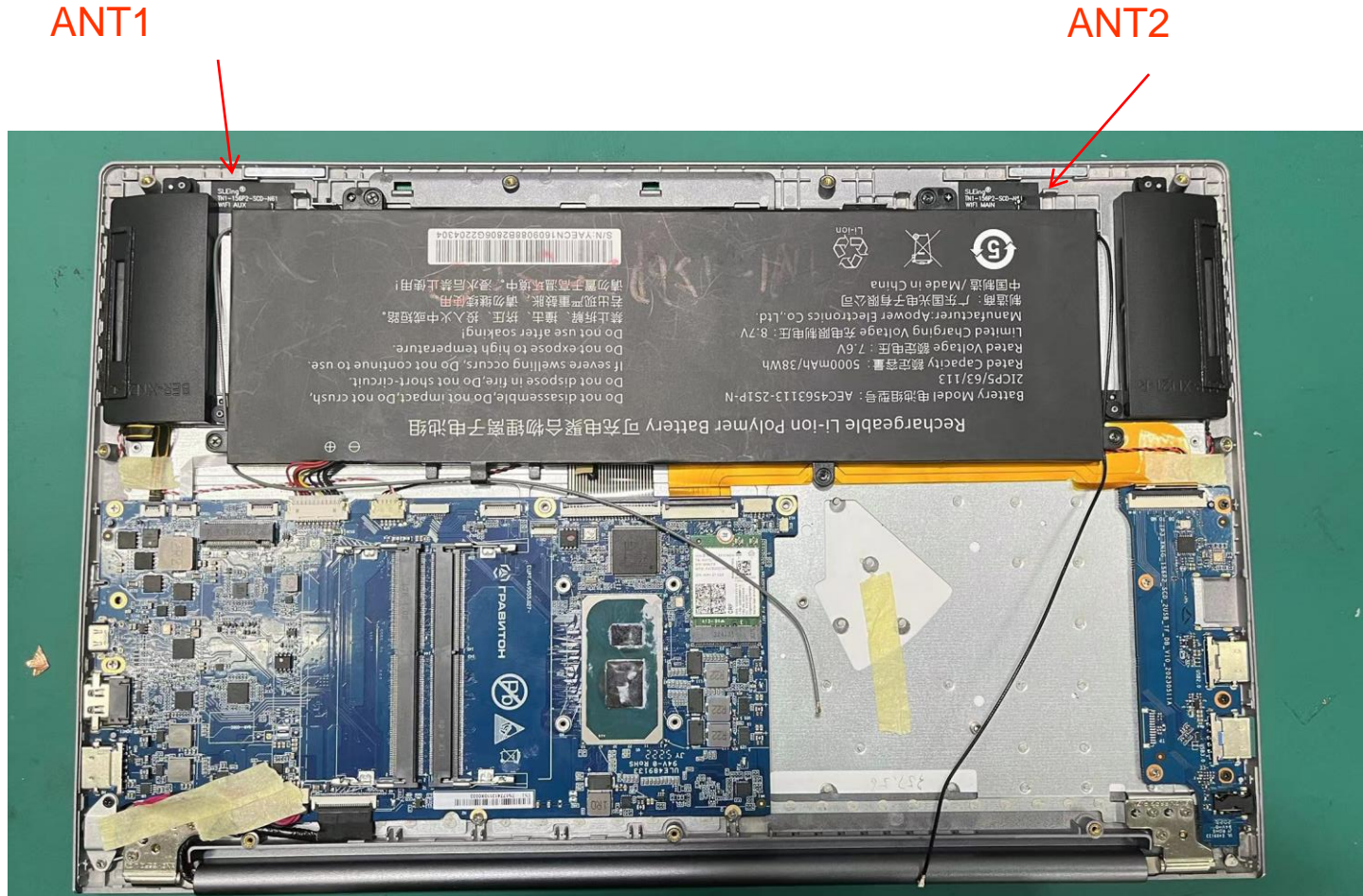
2. Product information

Product Name:	DN21C-156P2-SCD ANT
Part Number:	Main SLEingB241620230 AUX SLEingB241630310
Test frequency band:	2.4-2.5GHz 5.15-5.85GHz

3. Specifications

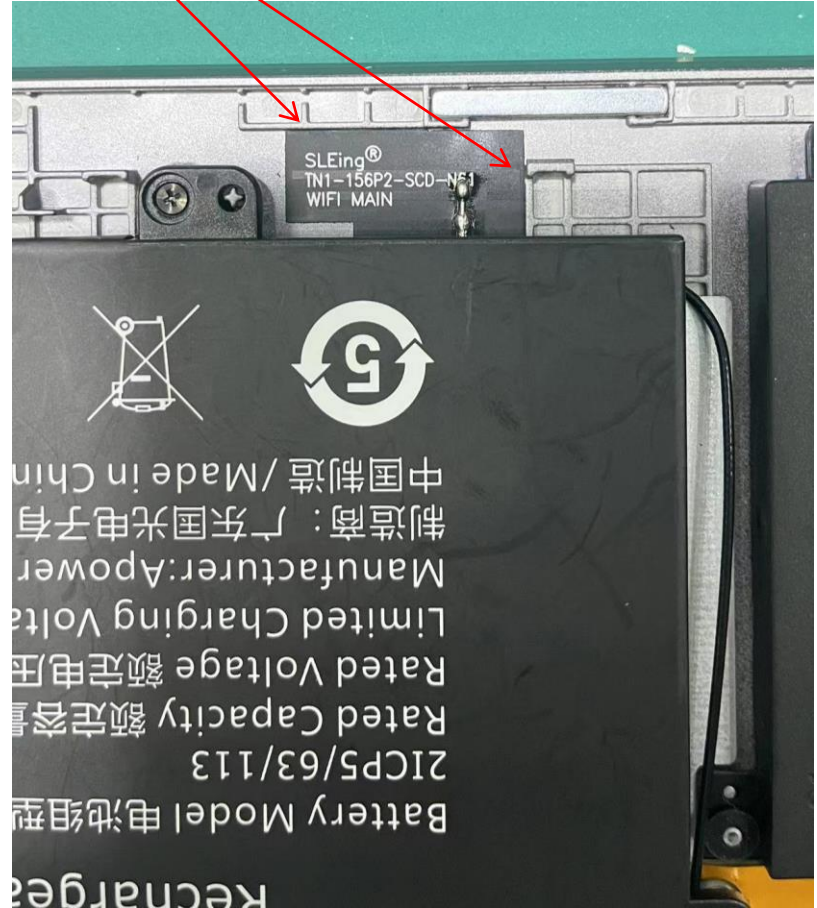
Rough description		Dimensions	
Impedance	50Ω	Test environment	None
Application		Freq. Range	2.4-2.5G/5.15-5.85GHz
Gain	Peak gain: 4.30	VSWR	1.92: 1
Radiation		Polarization	linear
Connector type	HMF 4代	Cable type	None
Isolation	None	Special request	

4. Antenna assembly instructions

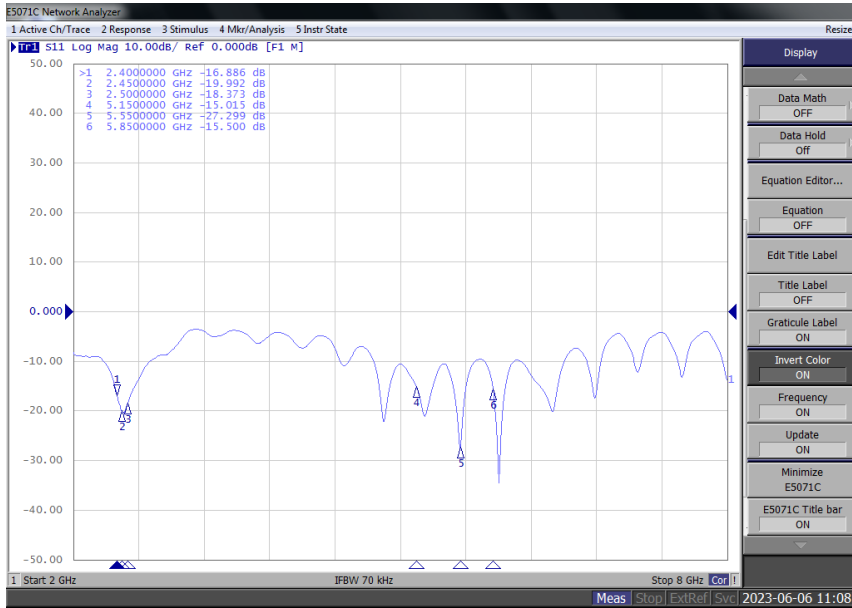


4.1 Antenna Assembly Instructions

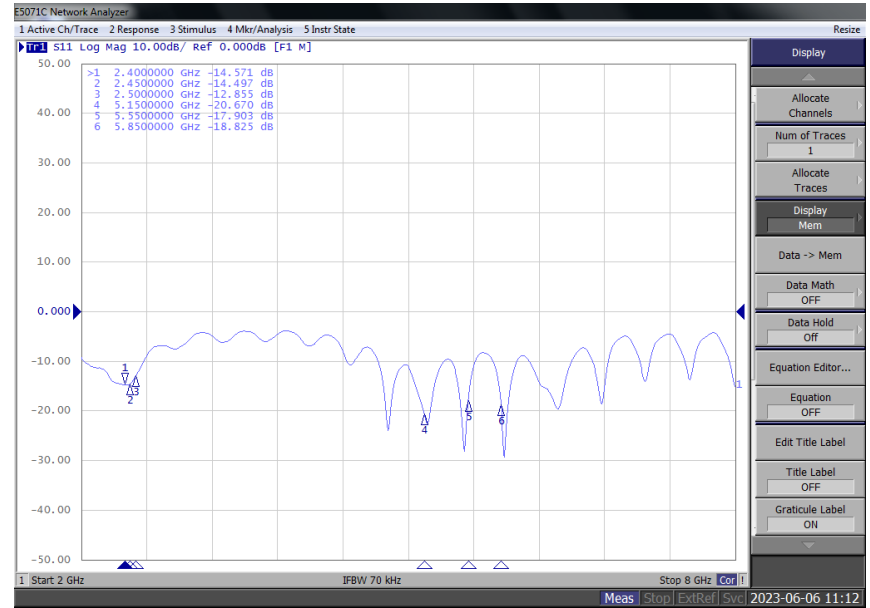
边缘对齐



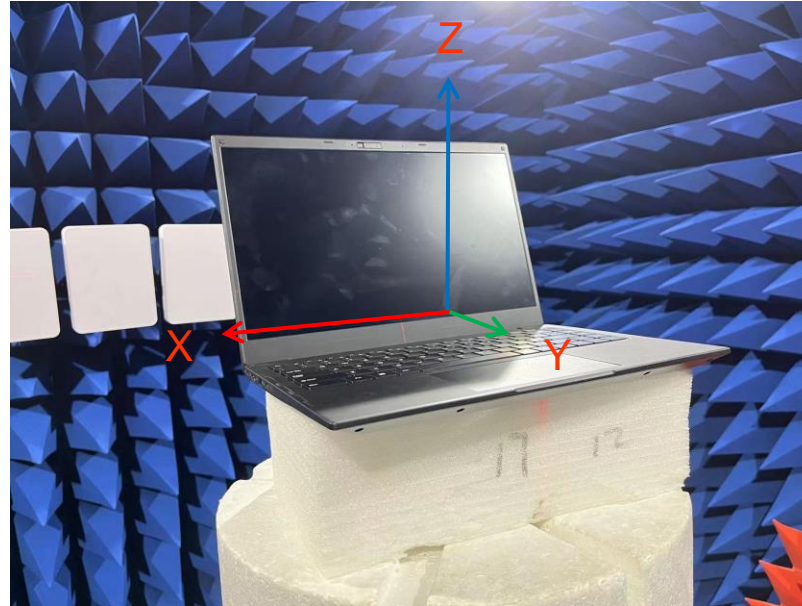
5. The S parameter is 2.4/5.8G



ANT2



ANT1



* This image represents only the relative coordinates indicated

7. Passive data and test chart

ANT2

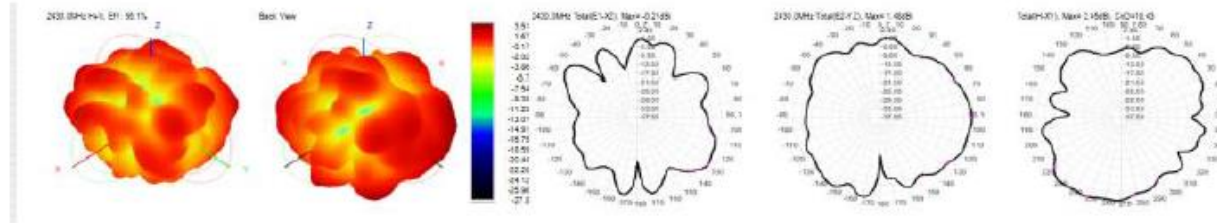
Frequency ID	1	2	3	4	5	6	7	8	9	10	11	12	13
Frequency (MHz)	2400.0	2410.0	2420.0	2430.0	2440.0	2450.0	2460.0	2470.0	2480.0	2490.0	2500.0	5150.0	5200.0
Gain (dBi)	3.84	3.80	3.61	3.51	3.63	3.92	4.17	4.27	4.24	3.95	3.68	3.19	3.37
Efficiency (%)	53.04	53.06	54.12	55.09	56.55	57.56	58.27	58.08	58.11	57.20	57.61	41.49	41.81
	14	15	16	17	18	19	20	21	22	23	24	25	26
Frequency (MHz)	5250.0	5300.0	5350.0	5400.0	5450.0	5500.0	5550.0	5600.0	5650.0	5700.0	5750.0	5800.0	5850.0
Gain (dBi)	4.01	4.05	3.73	4.30	3.81	3.72	4.00	3.31	3.29	2.82	3.41	3.47	3.39
Efficiency (%)	43.09	43.46	40.10	42.74	40.75	41.30	42.53	39.25	39.17	37.35	38.67	38.67	39.93

ANT1

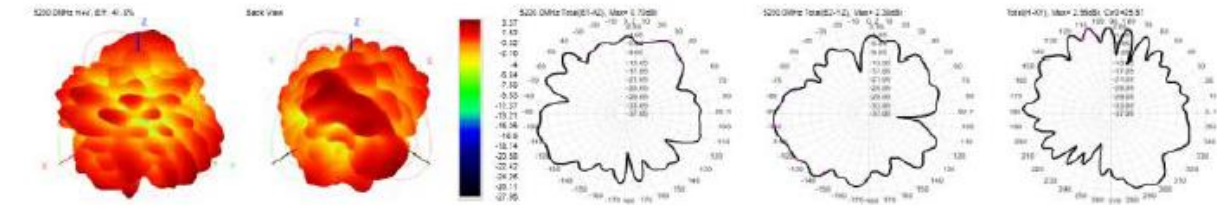
Frequency ID	1	2	3	4	5	6	7	8	9	10	11	12	13
Frequency (MHz)	2400.0	2410.0	2420.0	2430.0	2440.0	2450.0	2460.0	2470.0	2480.0	2490.0	2500.0	5150.0	5200.0
Gain (dBi)	2.88	2.83	2.89	3.02	3.22	3.30	3.33	3.27	3.26	3.32	3.28	2.31	2.20
Efficiency (%)	41.04	40.18	40.45	40.07	40.67	40.22	40.44	39.61	39.08	38.84	39.22	35.60	34.96
	14	15	16	17	18	19	20	21	22	23	24	25	26
Frequency (MHz)	5250.0	5300.0	5350.0	5400.0	5450.0	5500.0	5550.0	5600.0	5650.0	5700.0	5750.0	5800.0	5850.0
Gain (dBi)	2.07	2.04	1.44	1.86	2.08	2.66	2.52	2.89	3.70	3.56	3.47	3.35	3.61
Efficiency (%)	36.08	36.14	34.02	36.22	34.93	33.60	34.01	31.99	34.14	34.51	35.24	34.11	33.02

ANT2

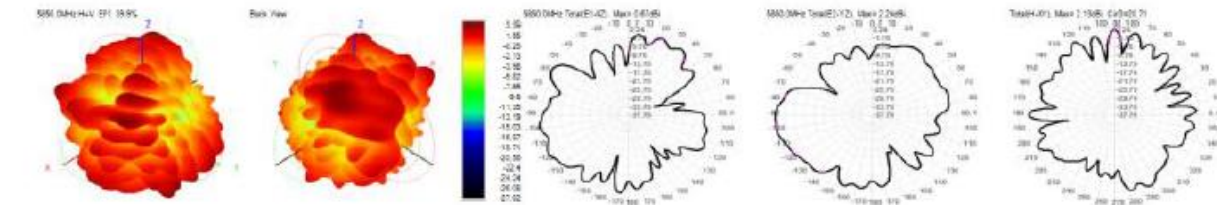
2440M



5200M

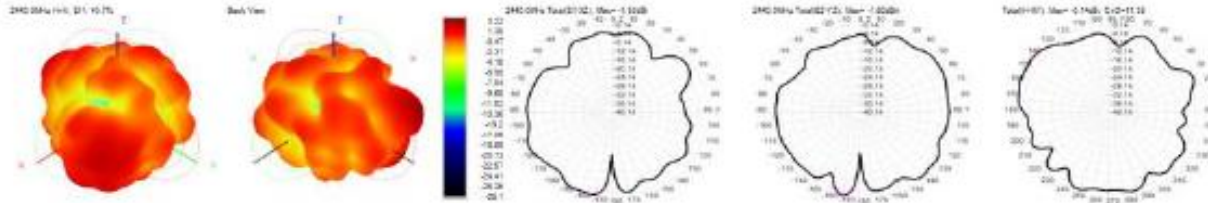


5850M

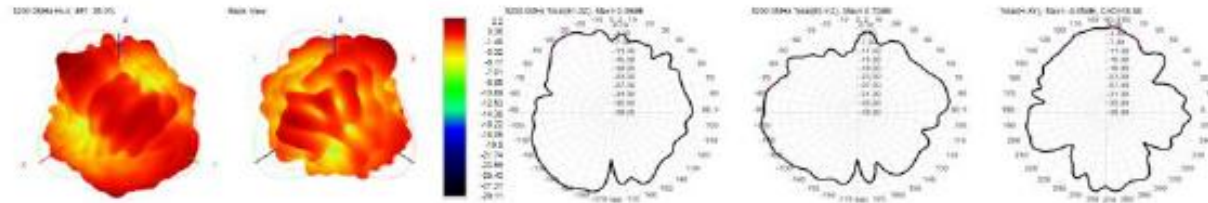


ANTI

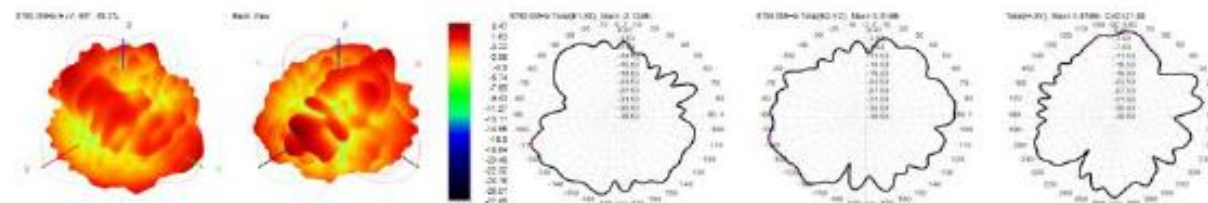
2440M



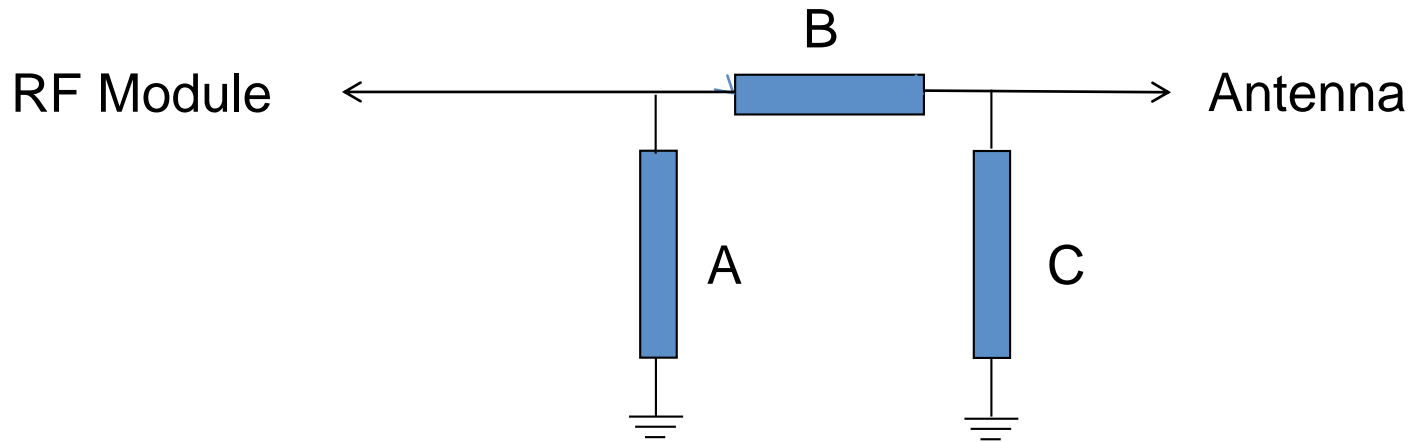
5200M



5750M



8. Match lines



Element	Value
A	NC
B	NC
C	NC

* The device is a module output, and the match is not modified

9. Summary



1. The efficiency of passive antenna test is more than 30%.



