

五折页成品尺寸：80*80mm,展开尺寸：400*80mm

Brand Story

It's no secret that taking care of a pet comes with many responsibilities, which is why we provide a wide range of supplies to meet all of your pet-parenting needs. From cables and stakes to toys and booster car seats, Petbobi presents a catalog unlike any other. Here, you're guaranteed to find the items that best suit your pet's unique demands.

While we value science-backed information, it's not the only source we rely on. We maintain a transparent approach that welcomes customer feedback. The people (and pets!) who use our products are the alphas of our operations. We encourage your opinions, so we can improve our products and exceed your expectations.

Instructions for Auto-Cycle Mode

- When the remote control is not in use, the toy will enter its auto-cycle mode upon receiving external force.
- In the auto-cycle mode, after a few quick standbys – 30s, 60s, and 120s respectively – the toy will launch into its next three jumping modes for 10 seconds each, keeping the jumping fun going strong that attracts your furbaby.
- If there is no external force, the toy will enter sleep mode accompanied by a continuous short flashing blue light.
- If the toy encounters external force while in sleep mode, it will reset to its initial 10-sec jumping, causing the auto-cycle mode to begin anew.

Charging Instructions

- To ensure optimal performance, recharge the toy in the following situations:**
- 1.Pressing the ON/OFF button for several seconds produces no response.
 2. If the red light on the toy is flashing continuously, indicating running low on energy.
 3. The toy gradually slows down or suddenly ceases to function.
- It takes 90 minutes to fully charge your toy. The toy can retain its energy for up to five days when not in use.
 - If pressing the ON/OFF button for several seconds produces no response, please replace the battery of your remote control.

Important Note

- When the indicator light of the remote control flashes, it means that the toy is not connected successfully. Double-check the toy and power it on to let the fun begin!
- Each toy can only be paired with one remote control. If your lucky furbaby has more than one of the toys, please ensure to connect them individually.
- For optimal performance and to avoid any control delays due to long distances, please operate the remote control within a clear range of 46 feet.
- The remote control will automatically power off after 5 minutes of inactivity.
- To keep the fun going, promptly recharge your toy when it gradually slows down or suddenly ceases to function.

- When replacing the battery for your remote control, make sure the positive terminal of the battery is facing upwards (picture 1).

LED Light Instructions

For the Inner Ball

- Red light for charging
- Green light for fully charged
- Colored light for a successful connection with the remote control
- When the colored light turns to a quick flashing blue light, it indicates the toy has entered the low-speed auto-cycle mode.
- When the colored light turns to a short flashing green light, it indicates the toy has entered the high-speed auto-cycle mode.

For the Remote Control

- Indicator light remains illuminated for a successful connection with the toy
- Indicator light flashes for no connection with any device

Interactive Dog Rolling & Flashing Ball Toy with Remote Control



Remote Control



LED Flashing



Vibration



Release Anxiety



Cleanable

Package Lists

Remote Control *1 The Toy *1 Type C +usb *1

Technical Parameters

For the Inner Ball

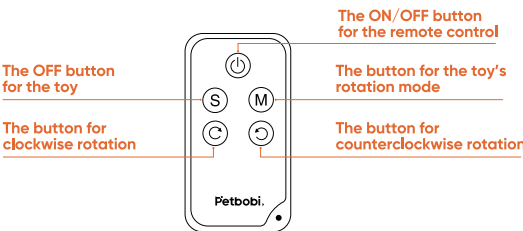
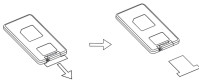
Battery: 500mAh lithium battery
Battery Volt: 3.7V
Charging Volt: 5V
Charging Current: 200mA
Working Temperature: 32-104°F

For the Remote Control

Radio Band: 2.4GHz
Battery: 3V CR2032 battery

Parameters for Remote Control

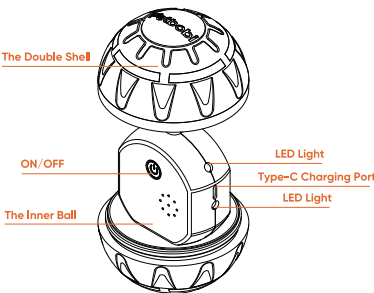
Before any setting adjustments by using this remote control, make sure to pull out the T-shaped piece that blocks power connections.



- Press (⏻) for 3 seconds to turn the remote control on or off.
- Press (⌚) for 3 seconds to turn the toy off (This button is solely designed to power off the toy. Reactivate the toy by pressing the ON/OFF button of the inner ball).
- Quick press (⌚) to switch the high-speed mode and the low-speed mode.
- With a quick press of (⌚), the toy will rotate clockwise for 8 seconds.
- With a quick press of (⌚), the toy will rotate counterclockwise for 8 seconds.

Parameters for the Toy

***Important Note: Before any setting adjustments, It's crucial to open the double shell of your Petbobi toy with the logo facing up.**



Press (⏻) for 5 seconds to turn the toy on or off.
Quick press (⏻) to switch the high-speed mode with green light flashes and the low-speed mode with blue light flashes.

Use Instructions for Remote Control

- 1) Open the double shell of your Petbobi toy with the logo facing up. Power on the toy by pressing (⏻) and the LED light will be on. Keep the double shell tightly secured to ensure your furbaby stays safe and sound.
- 2) Simply press (⏻) to activate the remote control. The toy will be automatically connected accompanying a colored light, while the indicator light of the remote control will remain illuminated.
- 3) Press the (⌚) and (⌚) to respectively control the clockwise and counterclockwise rotation of the toy.
- 4) Press (⌚) to switch the high-speed mode and the low-speed mode of the toy.
- 5) Press (⌚) for a few seconds to turn the toy off.
- 6) If the remote control is consistently turned off or switched off after use, the toy will automatically enter the auto-cycle mode.



If you have any questions or good ideas to share, please feel free to contact us.



@Petbobi_official



hello@petbobi.com



@Petbobi_official



www.petbobi.com

Please feel free to contact us if your toy stops working or have any other problems.



Interactive Dog Rolling & Flashing Ball Toy with Remote Control

Find Assembly Tutorial on Petbobi YouTube



FCC Warning:

This equipment has been tested and found to comply with the limits for a Class B digital device, pursuant to part 15 of the FCC Rules. These limits are designed to provide reasonable protection against harmful interference in a residential installation. This equipment generates, uses and can radiate radio frequency energy and, if not installed and used in accordance with the instructions, may cause harmful interference to radio communications. However, there is no guarantee that interference will not occur in a particular installation. If this equipment does cause harmful interference to radio or television reception, which can be determined by turning the equipment off and on, the user is encouraged to try to correct the interference by one or more of the following measures:

- Reorient or relocate the receiving antenna.
- Increase the separation between the equipment and receiver.
- Connect the equipment into an outlet on a circuit different from that to which the receiver is connected.
- Consult the dealer or an experienced radio/TV technician for help.

Caution: Any changes or modifications to this device not explicitly approved by manufacturer could void your authority to operate this equipment.

This device complies with part 15 of the FCC Rules. Operation is subject to the following two conditions:

(1) This device may not cause harmful interference, and (2) this device must accept any interference received, including interference that may cause undesired operation.

This equipment complies with FCC radiation exposure limits set forth for an uncontrolled environment. The device has been evaluated to meet general RF exposure requirement. The device can be used in portable exposure condition without restriction.