

Wi-Fi HALOW EVK ANT (SJANT-PCB-900-01) Passive Data

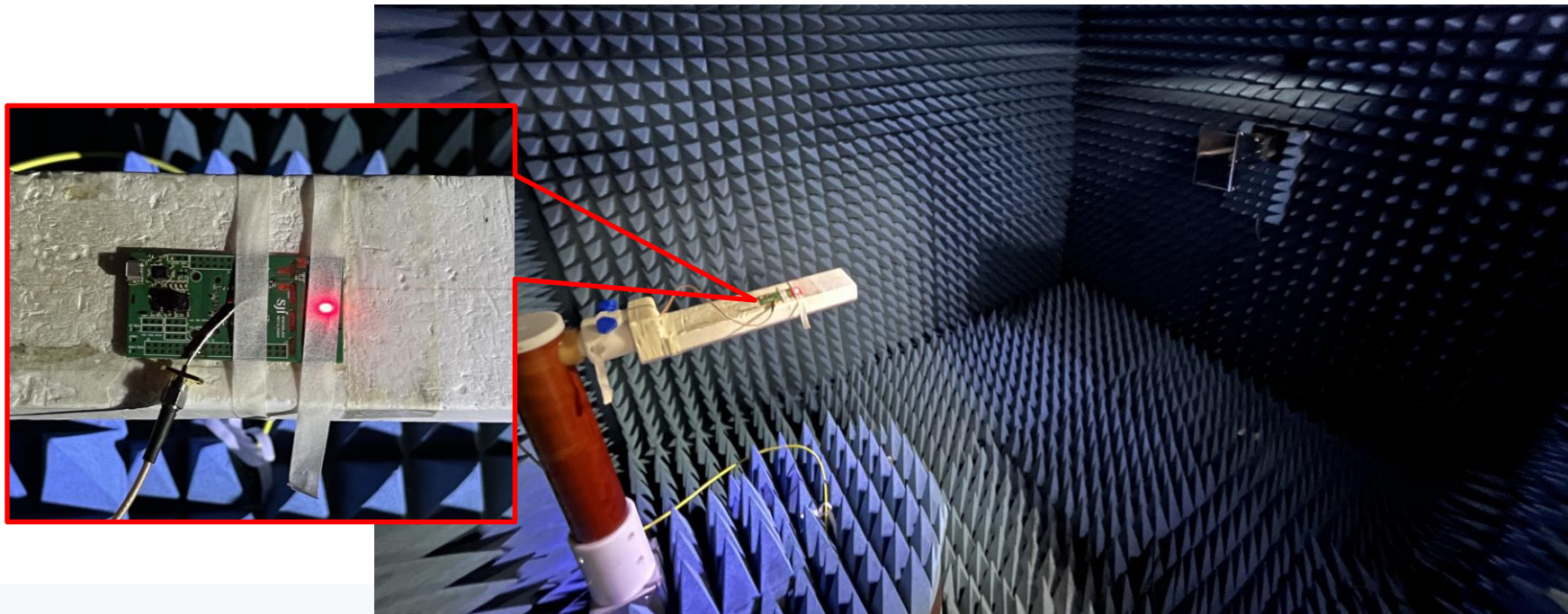
IoT사업부 연구1파트

2023. 10. 31

1. TEST 조건

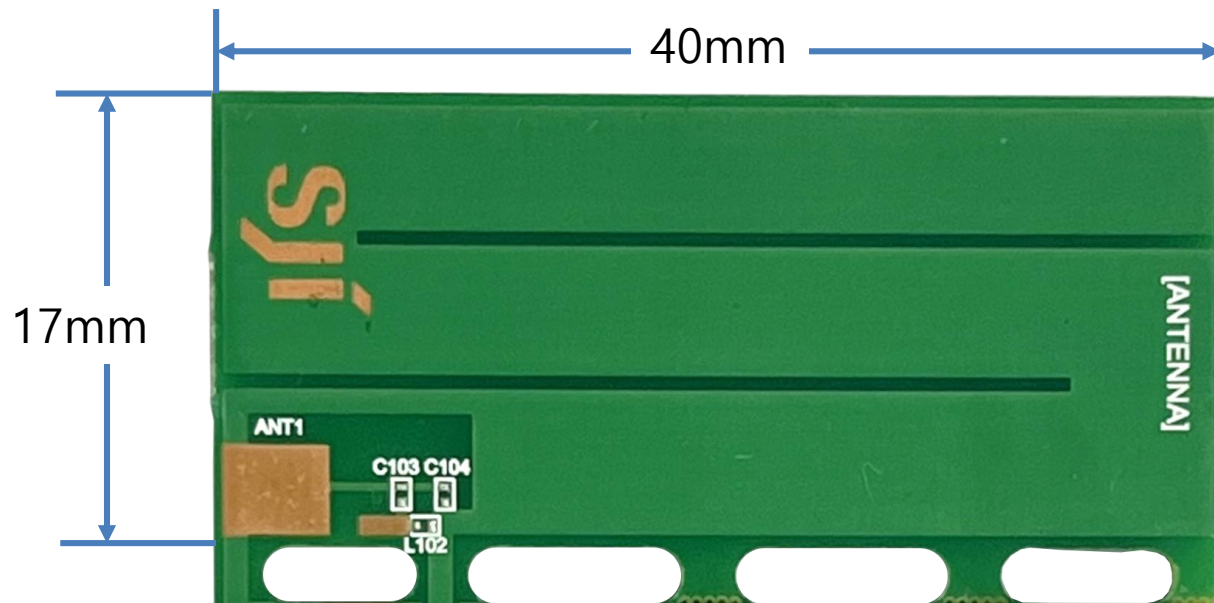
- Wi-Fi HALOW EVK Antenna
 - Network Analyzer : Return Loss Compare
 - 3D Passive Chamber : Gain 및 Efficiency

2. TEST 환경

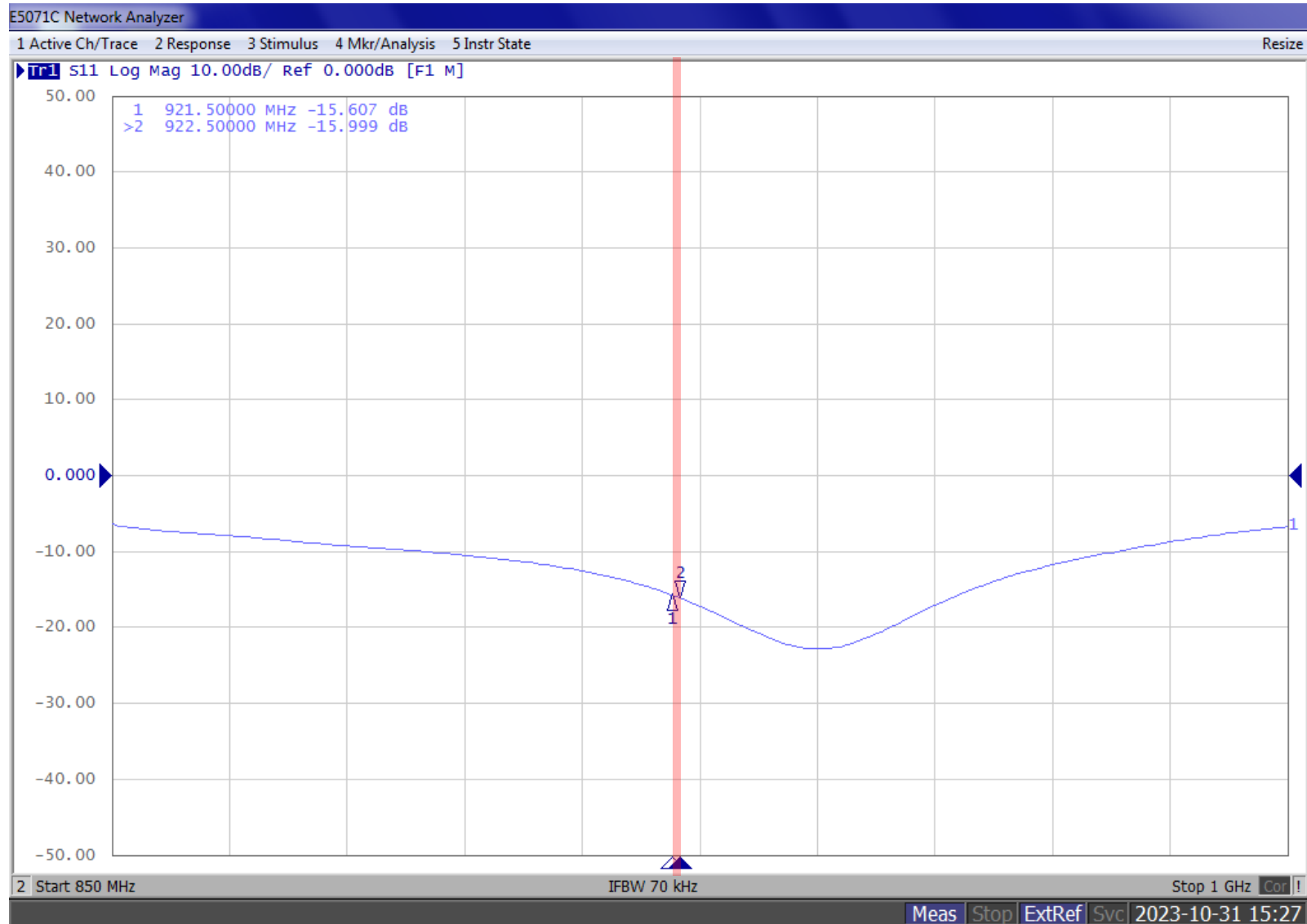


3. Antenna info.

- Antenna P/N
- SJANT-PCB-900-01



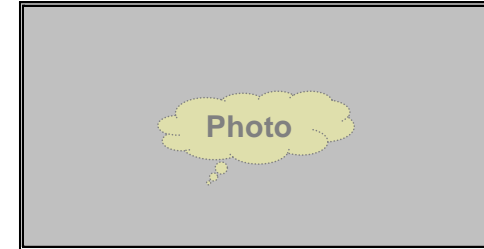
Wi-Fi HALOW EVK ANT Passive TEST - Return Loss



Wi-Fi HALOW EVK ANT Passive TEST – Antenna 3D Gain

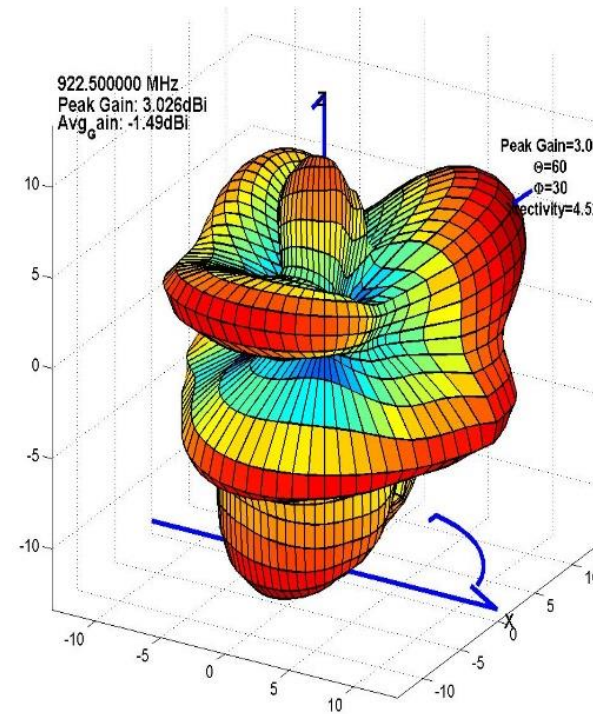
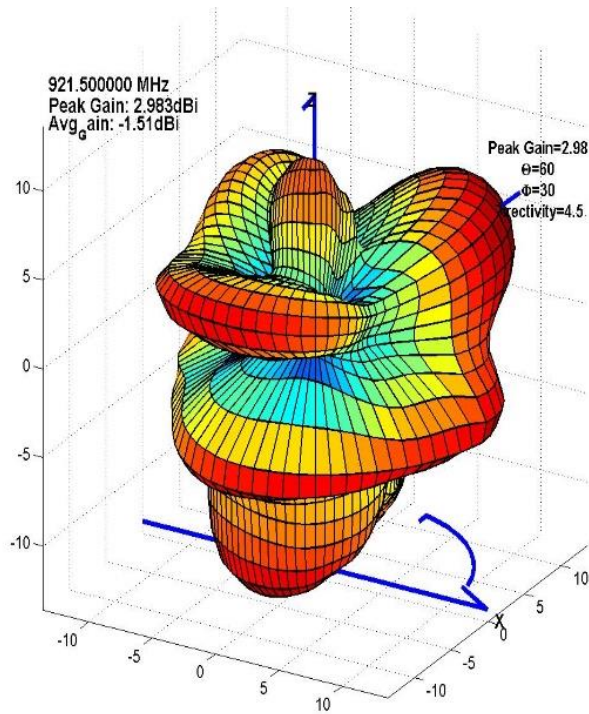
Antenna Pattern & Gain Report

Manufacturer	WiFi_HaLow
Model Name	WiFi_HaLow
Tester Name	Airlink
Test Date	2023-10-31 오전 11:37:45
IF BW	100 Hz
Port Power	0.00 dBm
Meas Step	15`



Frequency	Efficiency	Average Gain			Max Gain			Max Position	Directivity
		Ver	Hor	Total	Ver	Hor	Total		
900.000000 MHz	73.9 %	-5.4 dBi	-3.5 dBi	-1.3 dBi	2.1 dBi	1.8 dBi	2.8 dBi	Theta60/Pie30	4.15 dB
905.000000 MHz	71.3 %	-5.5 dBi	-3.7 dBi	-1.5 dBi	1.9 dBi	1.8 dBi	2.8 dBi	Theta60/Pie30	4.25 dB
910.000000 MHz	67.7 %	-5.6 dBi	-4.0 dBi	-1.7 dBi	1.7 dBi	1.7 dBi	2.6 dBi	Theta60/Pie30	4.34 dB
915.000000 MHz	66.5 %	-5.6 dBi	-4.1 dBi	-1.8 dBi	1.6 dBi	1.7 dBi	2.7 dBi	Theta60/Pie30	4.42 dB
921.500000 MHz	70.6 %	-5.3 dBi	-3.9 dBi	-1.5 dBi	1.7 dBi	2.1 dBi	3.0 dBi	Theta60/Pie30	4.50 dB
922.500000 MHz	70.9 %	-5.3 dBi	-3.8 dBi	-1.5 dBi	1.8 dBi	2.1 dBi	3.0 dBi	Theta60/Pie30	4.52 dB
926.500000 MHz	70.5 %	-5.3 dBi	-3.9 dBi	-1.5 dBi	1.7 dBi	2.1 dBi	3.0 dBi	Theta60/Pie30	4.49 dB
929.500000 MHz	69.0 %	-5.4 dBi	-4.0 dBi	-1.6 dBi	1.6 dBi	2.0 dBi	2.8 dBi	Theta60/Pie30	4.38 dB
935.000000 MHz	66.3 %	-5.6 dBi	-4.1 dBi	-1.8 dBi	1.5 dBi	1.9 dBi	2.5 dBi	Theta60/Pie30	4.32 dB
940.000000 MHz	63.2 %	-5.9 dBi	-4.3 dBi	-2.0 dBi	1.3 dBi	1.9 dBi	2.2 dBi	Theta60/Pie30	4.23 dB
945.000000 MHz	62.1 %	-6.0 dBi	-4.3 dBi	-2.1 dBi	1.2 dBi	2.0 dBi	2.2 dBi	Theta60/Pie45	4.25 dB
950.000000 MHz	62.1 %	-6.1 dBi	-4.3 dBi	-2.1 dBi	1.1 dBi	2.1 dBi	2.3 dBi	Theta75/Pie30	4.36 dB
955.000000 MHz	61.6 %	-6.3 dBi	-4.2 dBi	-2.1 dBi	1.0 dBi	2.2 dBi	2.4 dBi	Theta75/Pie30	4.49 dB
960.000000 MHz	64.6 %	-6.2 dBi	-3.9 dBi	-1.9 dBi	1.1 dBi	2.6 dBi	2.7 dBi	Theta75/Pie45	4.60 dB
965.000000 MHz	66.2 %	-6.2 dBi	-3.7 dBi	-1.8 dBi	1.1 dBi	2.7 dBi	2.9 dBi	Theta75/Pie45	4.69 dB
970.000000 MHz	58.9 %	-6.9 dBi	-4.1 dBi	-2.3 dBi	0.5 dBi	2.4 dBi	2.5 dBi	Theta75/Pie45	4.83 dB
975.000000 MHz	52.7 %	-7.6 dBi	-4.5 dBi	-2.8 dBi	-0.2 dBi	2.0 dBi	2.2 dBi	Theta75/Pie45	4.95 dB
980.000000 MHz	49.7 %	-8.0 dBi	-4.7 dBi	-3.0 dBi	-0.6 dBi	1.8 dBi	2.0 dBi	Theta75/Pie45	5.02 dB
985.000000 MHz	48.1 %	-8.3 dBi	-4.8 dBi	-3.2 dBi	-1.0 dBi	1.7 dBi	1.9 dBi	Theta75/Pie45	5.07 dB
990.000000 MHz	50.2 %	-8.3 dBi	-4.5 dBi	-3.0 dBi	-1.0 dBi	1.9 dBi	2.1 dBi	Theta75/Pie45	5.09 dB
995.000000 MHz	50.9 %	-8.3 dBi	-4.4 dBi	-2.9 dBi	-1.2 dBi	1.9 dBi	2.1 dBi	Theta75/Pie30	5.01 dB
1000.000000 MHz	48.9 %	-8.6 dBi	-4.6 dBi	-3.1 dBi	-1.6 dBi	1.6 dBi	1.8 dBi	Theta75/Pie30	4.95 dB
995.000000 MHz	48.4 %	-8.6 dBi	-4.6 dBi	-3.2 dBi	-1.7 dBi	1.6 dBi	1.8 dBi	Theta75/Pie30	4.97 dB
1000.000000 MHz	48.9 %	-8.6 dBi	-4.6 dBi	-3.1 dBi	-1.6 dBi	1.6 dBi	1.9 dBi	Theta75/Pie30	4.98 dB

Wi-Fi HALOW EVK ANT Passive TEST – Antenna 3D Gain



감사합니다.