

Appendix E: Number of hopping channels

Test Result

Test Mode	Antenna	Frequency[MHz]	Result[Num]	Limit[Num]	Verdict
DH5	Ant1	Hop	79	≥ 15	PASS
2DH5	Ant1	Hop	79	≥ 15	PASS
3DH5	Ant1	Hop	79	≥ 15	PASS

Test Graphs

DH5-Ant1-Hop-PASS



2DH5-Ant1-Hop-PASS



3DH5-Ant1-Hop-PASS



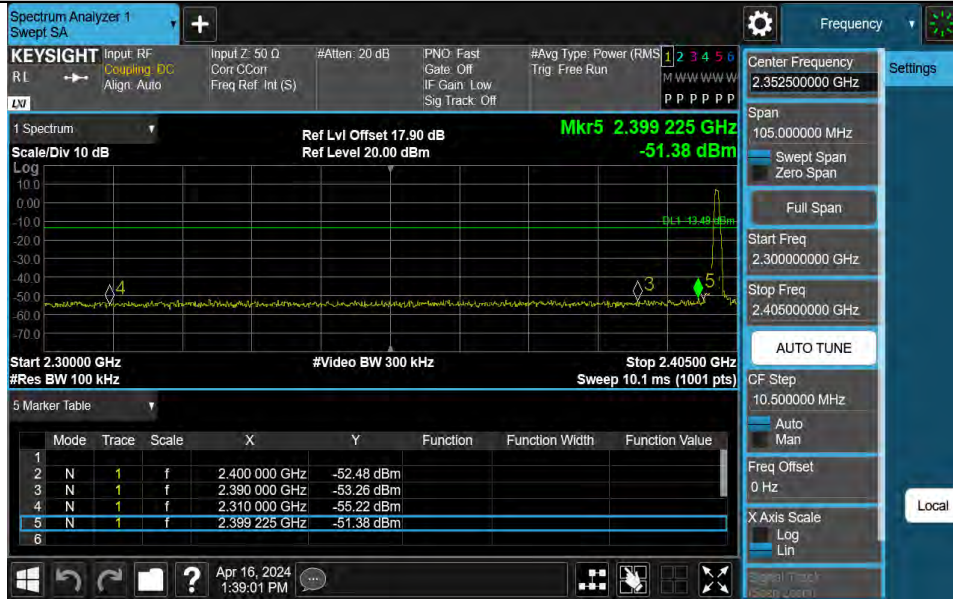
Appendix F: Band edge measurements

Test Result

Test Mode	Antenna	ChName	Frequency[MHz]	RefLevel [dBm]	Result [dBm]	Limit [dBm]	Verdict
DH5	Ant1	Low	2402	6.51	-51.38	≤-13.49	PASS
DH5	Ant1	High	2480	6.46	-51.14	≤-13.54	PASS
DH5	Ant1	Low	Hop_2402	6.55	-51.16	≤-13.45	PASS
DH5	Ant1	High	Hop_2480	6.34	-50.94	≤-13.66	PASS
2DH5	Ant1	Low	2402	5.99	-51.17	≤-14.01	PASS
2DH5	Ant1	High	2480	6.39	-50.47	≤-13.61	PASS
2DH5	Ant1	Low	Hop_2402	4.50	-50.86	≤-15.5	PASS
2DH5	Ant1	High	Hop_2480	4.65	-50.88	≤-15.35	PASS
3DH5	Ant1	Low	2402	6.89	-49.42	≤-13.11	PASS
3DH5	Ant1	High	2480	6.33	-51.87	≤-13.67	PASS
3DH5	Ant1	Low	Hop_2402	5.13	-51.01	≤-14.87	PASS
3DH5	Ant1	High	Hop_2480	5.38	-50.56	≤-14.62	PASS

Test Graphs

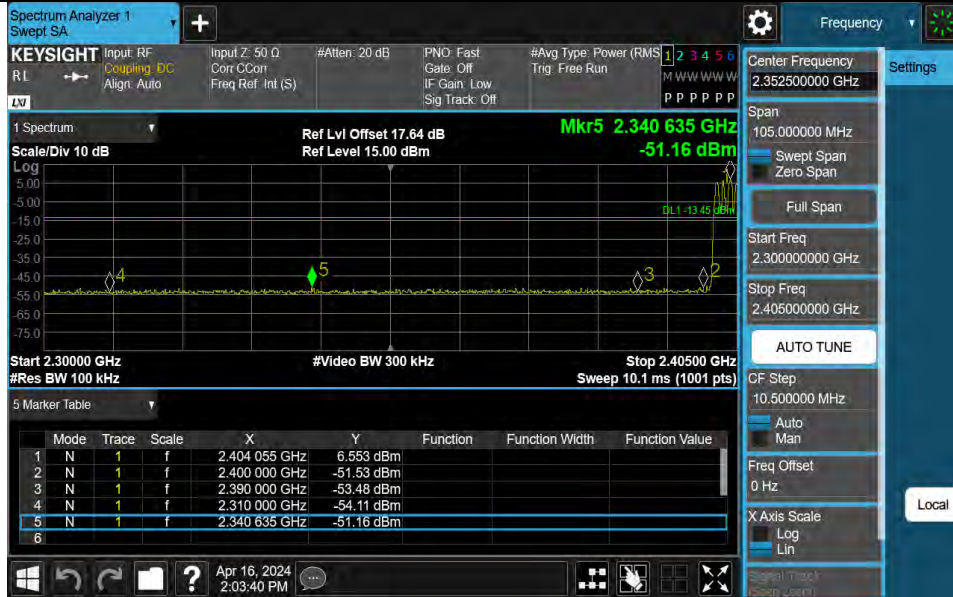
DH5-Ant1-2402-PASS



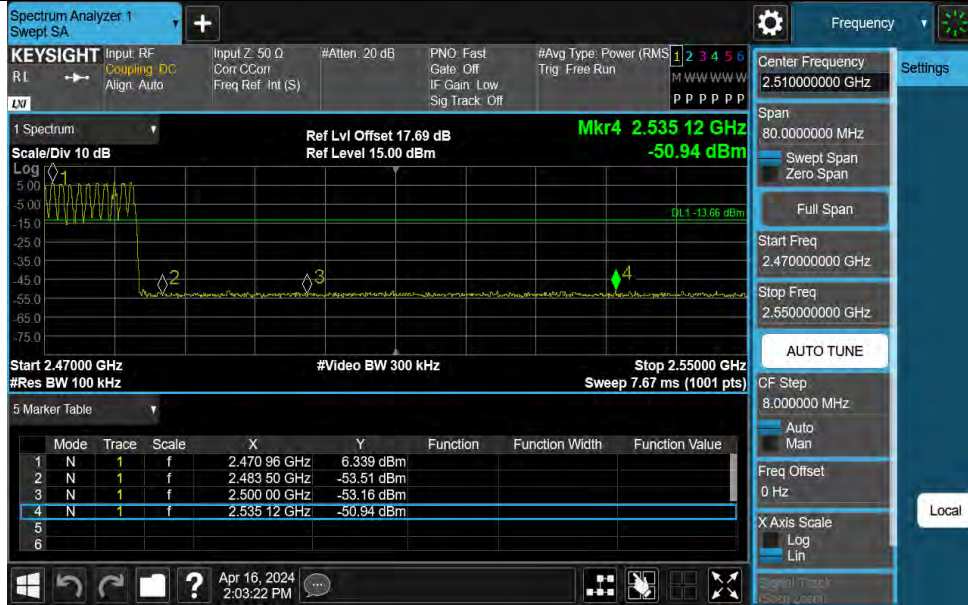
DH5-Ant1-2480-PASS



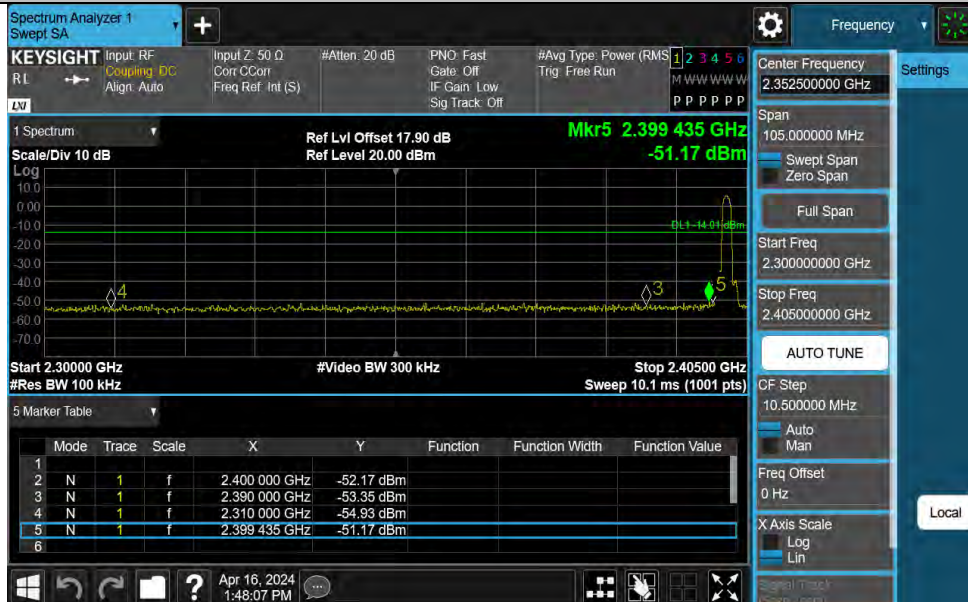
DH5-Ant1-Hop 2402-PASS



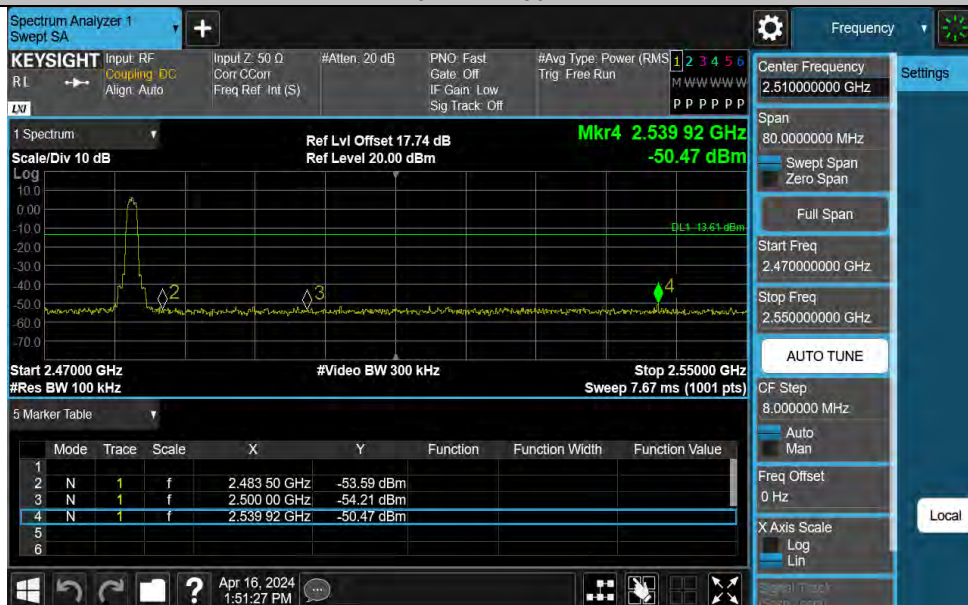
DH5-Ant1-Hop 2480-PASS



2DH5-Ant1-2402-PASS



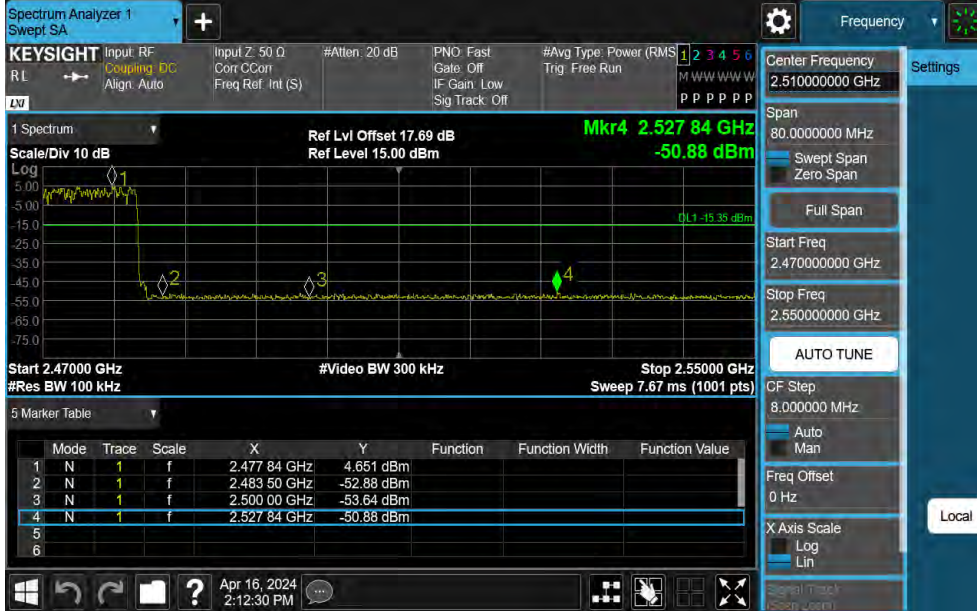
2DH5-Ant1-2480-PASS



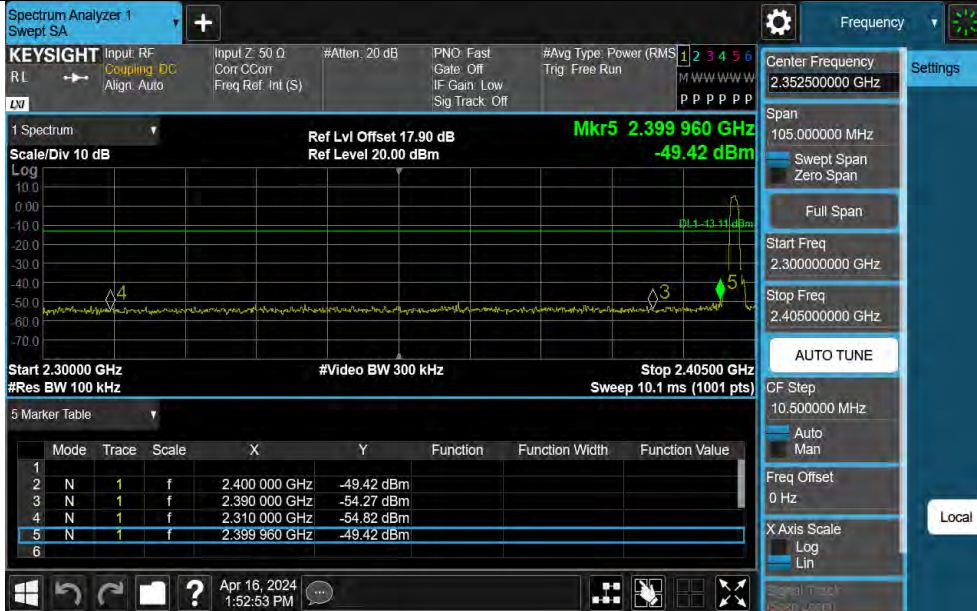
2DH5-Ant1-Hop 2402-PASS



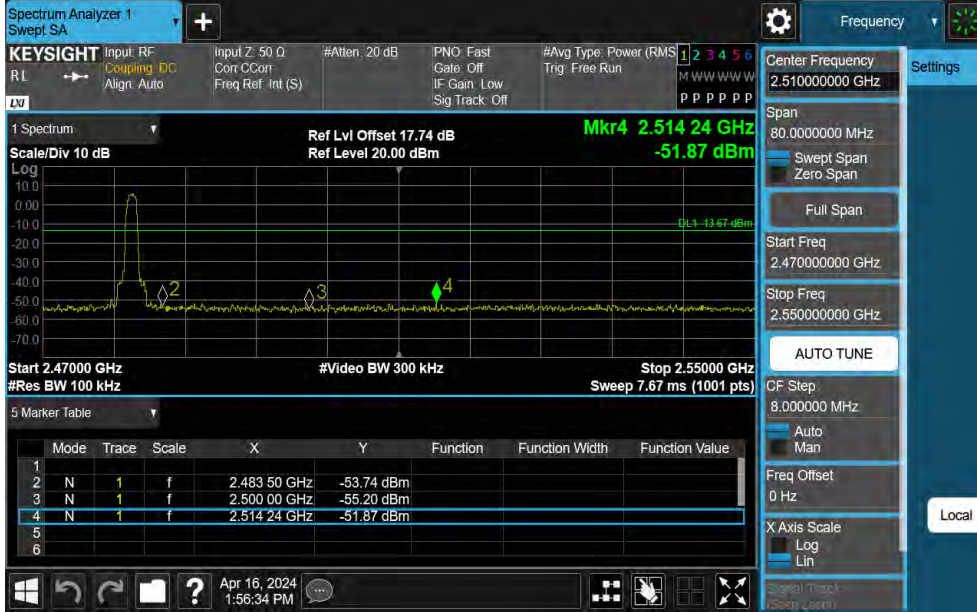
2DH5-Ant1-Hop 2480-PASS



3DH5-Ant1-2402-PASS



3DH5-Ant1-2480-PASS



3DH5-Ant1-Hop 2402-PASS



3DH5-Ant1-Hop 2480-PASS



Appendix G: Conducted Spurious Emission Test Result

Test Mode	Antenna	Frequency[MHz]	FreqRange [MHz]	RefLevel [dBm]	Result [dBm]	Limit [dBm]	Verdict
DH5	Ant1	2402	30~26500	6.51	-43.08	≤-13.49	PASS
DH5	Ant1	2441	30~26500	6.67	-43.13	≤-13.33	PASS
DH5	Ant1	2480	30~26500	6.46	-42.71	≤-13.54	PASS
2DH5	Ant1	2402	30~26500	5.99	-42.75	≤-14.01	PASS
2DH5	Ant1	2441	30~26500	6.56	-43.45	≤-13.44	PASS
2DH5	Ant1	2480	30~26500	6.39	-43.11	≤-13.61	PASS
3DH5	Ant1	2402	30~26500	6.89	-43.36	≤-13.11	PASS
3DH5	Ant1	2441	30~26500	6.32	-43.25	≤-13.68	PASS
3DH5	Ant1	2480	30~26500	6.33	-43.03	≤-13.67	PASS

Test Graphs

DH5-Ant1-2402-30~26500-PASS



DH5-Ant1-2441-30~26500-PASS



DH5-Ant1-2480-30~26500-PASS



2DH5-Ant1-2402-30~26500-PASS



2DH5-Ant1-2441-30~26500-PASS



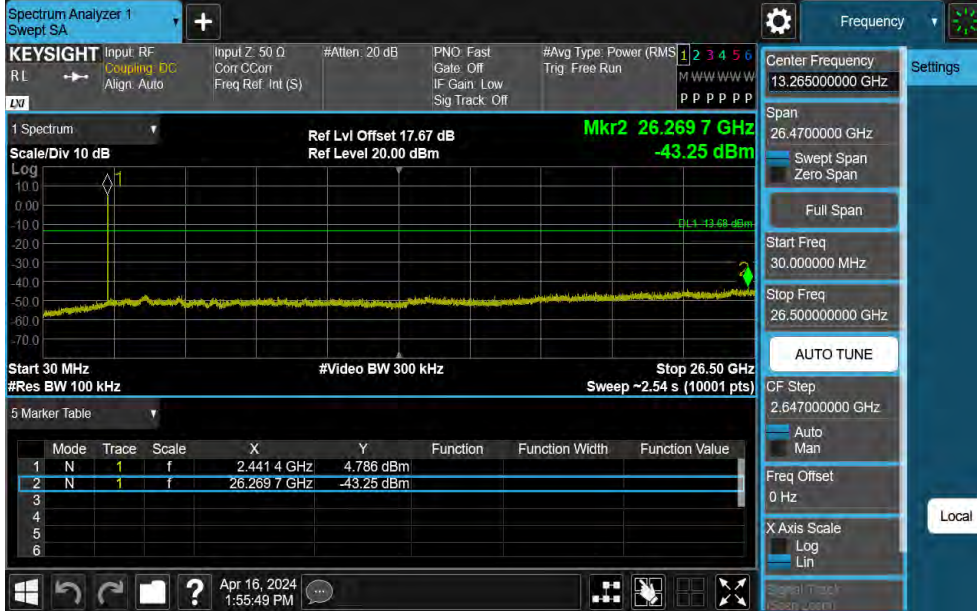
2DH5-Ant1-2480-30~26500-PASS



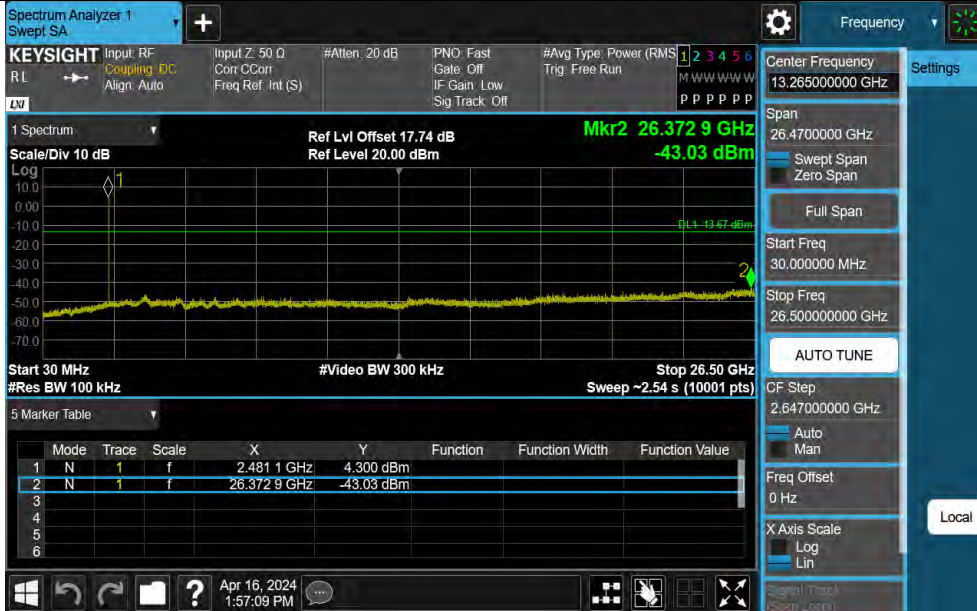
3DH5-Ant1-2402-30~26500-PASS



3DH5-Ant1-2441-30~26500-PASS



3DH5-Ant1-2480-30~26500-PASS



Appendix H: Reference level measurement Test Result

Test Mode	Antenna	Freq(MHz)	Max.Point[MHz]	Result[dBm]
DH5	Ant1	2402	2402.02	6.51
DH5	Ant1	2441	2441.15	6.67
DH5	Ant1	2480	2480.00	6.46
2DH5	Ant1	2402	2401.98	5.99
2DH5	Ant1	2441	2440.82	6.56
2DH5	Ant1	2480	2480.14	6.39
3DH5	Ant1	2402	2402.15	6.89
3DH5	Ant1	2441	2440.98	6.32
3DH5	Ant1	2480	2479.99	6.33

Test Graphs

DH5-Ant1-2402-PASS



DH5-Ant1-2441-PASS



DH5-Ant1-2480-PASS



2DH5-Ant1-2402-PASS



2DH5-Ant1-2441-PASS



2DH5-Ant1-2480-PASS



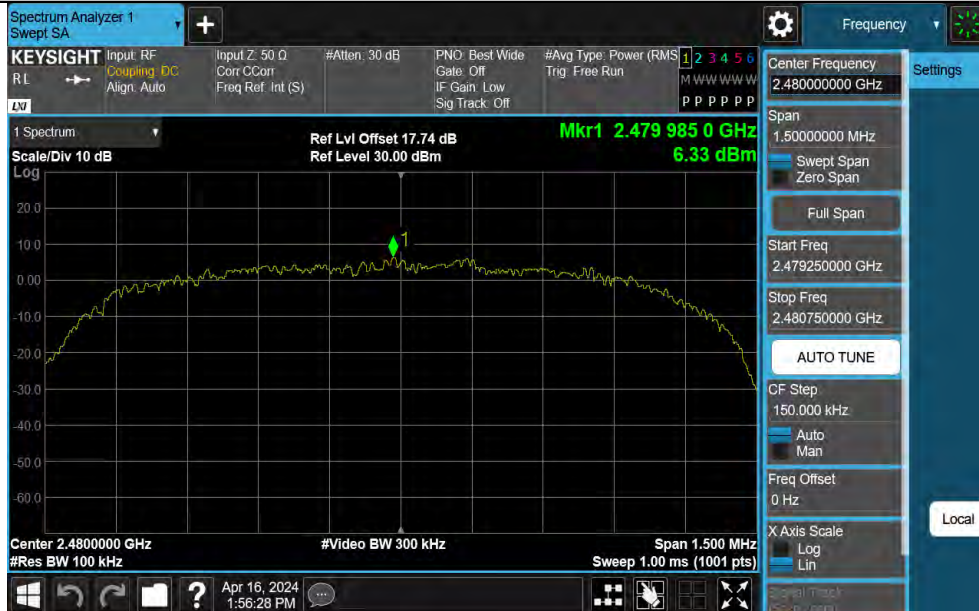
3DH5-Ant1-2402-PASS



3DH5-Ant1-2441-PASS



3DH5-Ant1-2480-PASS

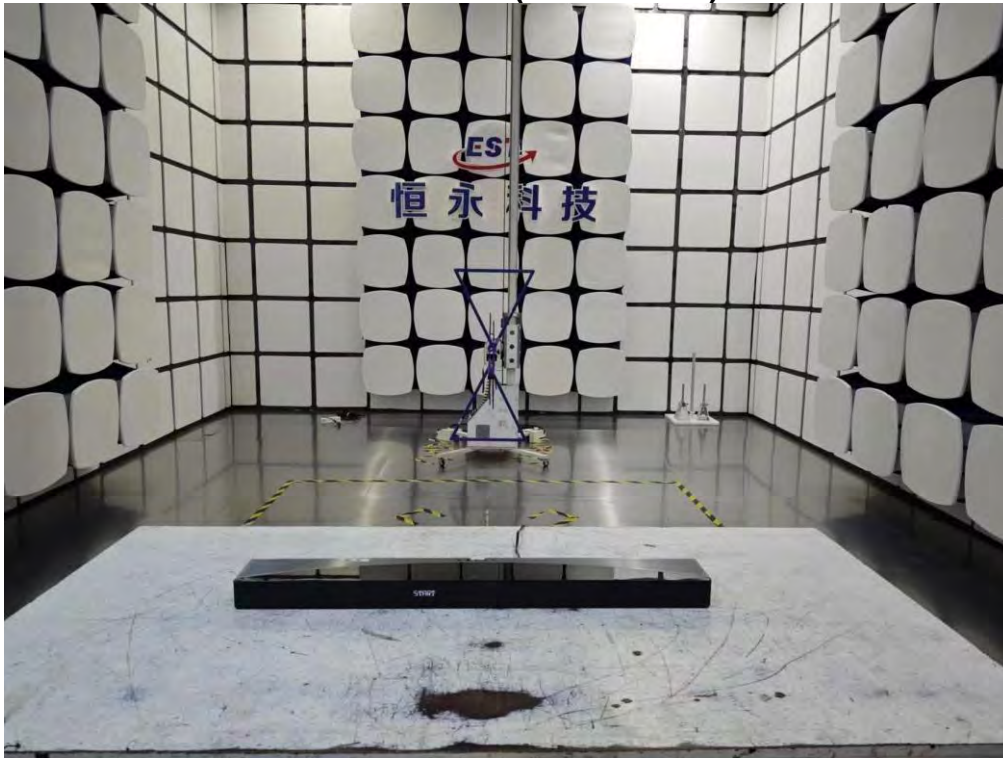


14. TEST SETUP PHOTO

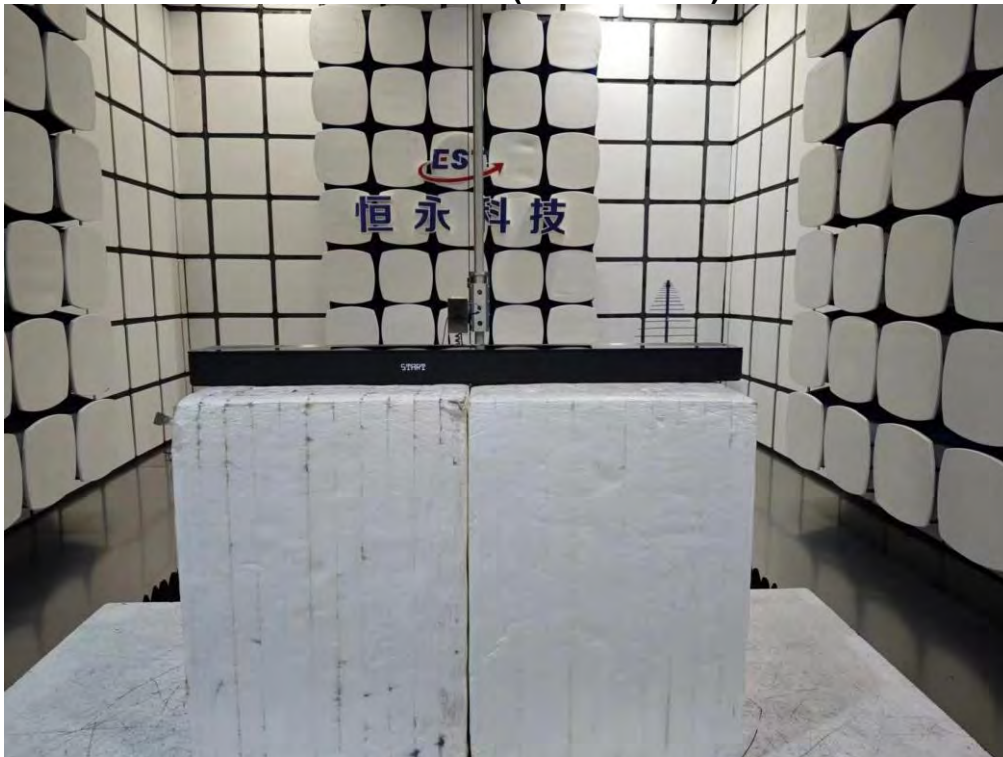
Conducted Test



Radiated Test (Below 1GHz)



Radiated Test (Above 1GHz)



15. EUT PHOTO

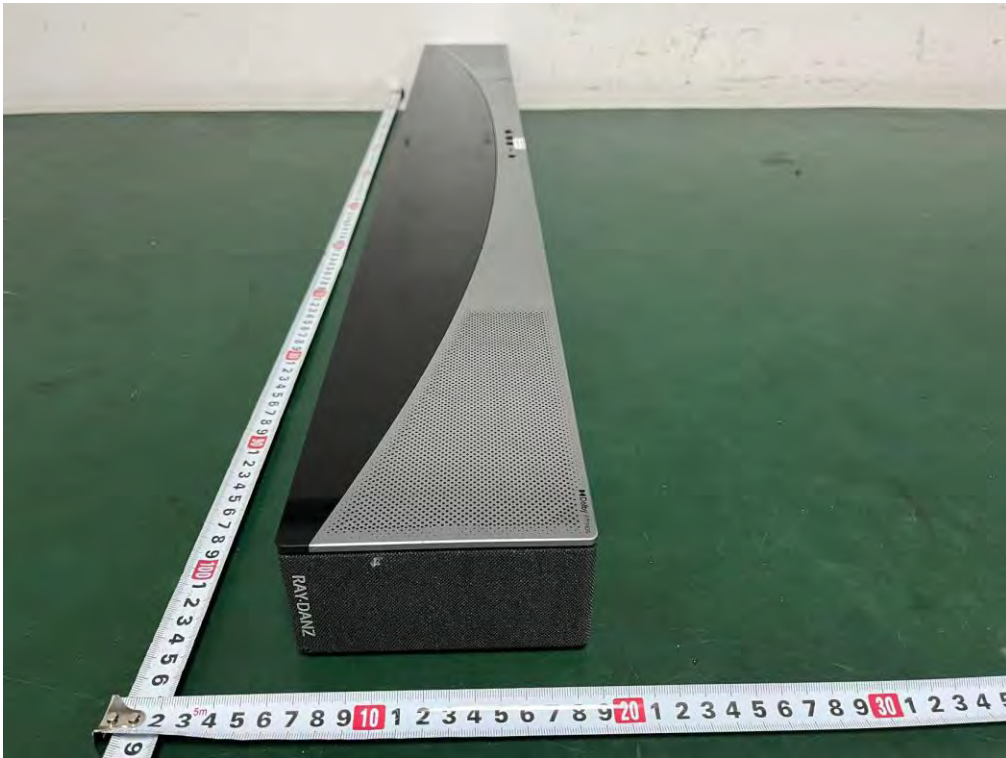
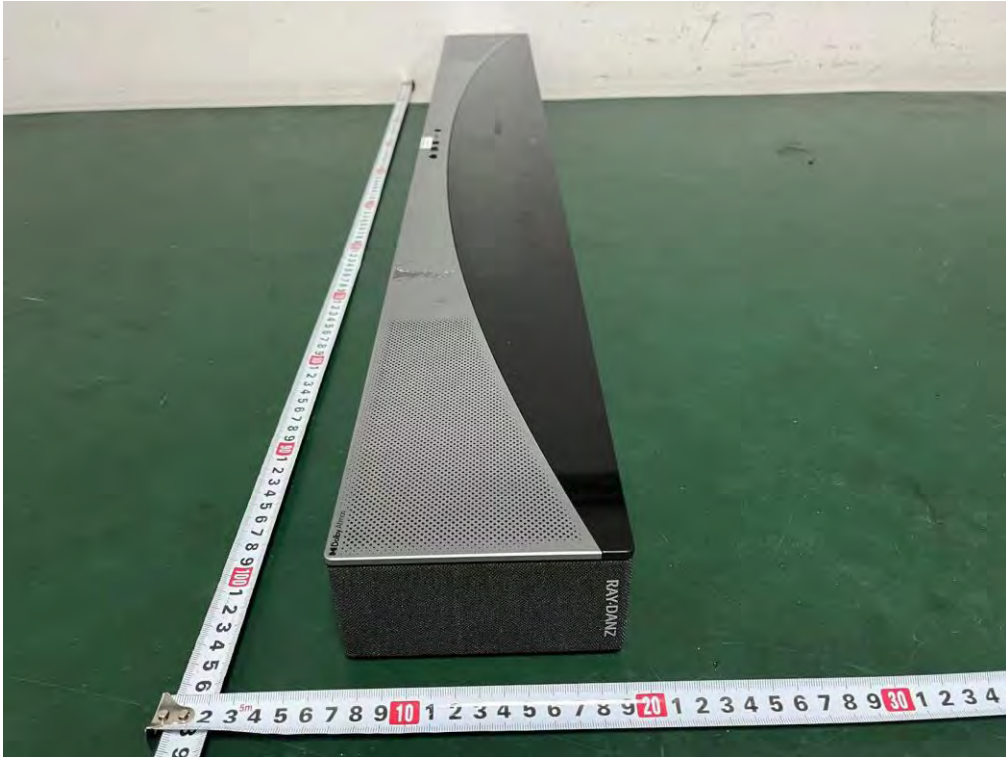
External Photos
M/N: Q85H



External Photos
M/N: Q85H



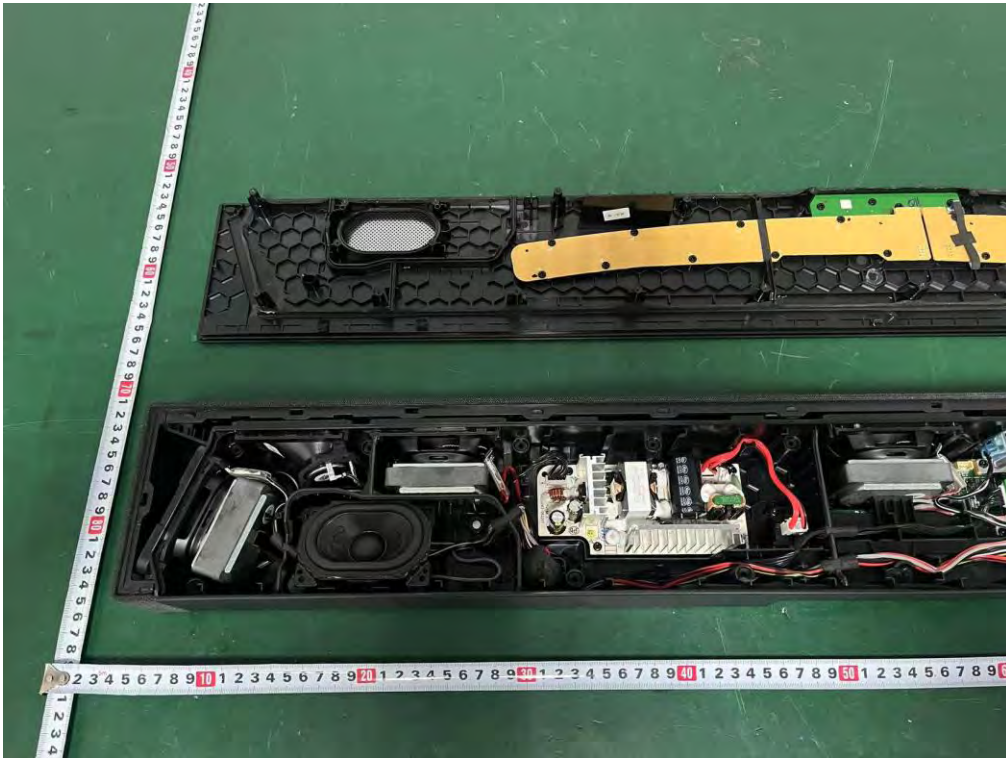
External Photos
M/N: Q85H



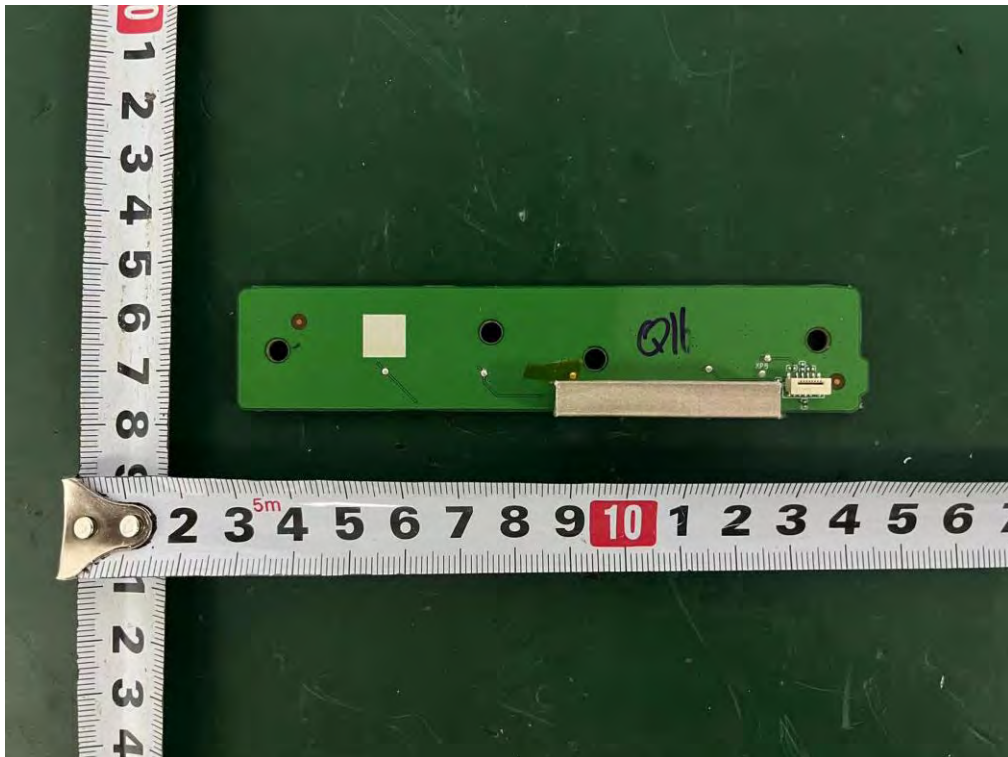
External Photos
M/N: Q85H



Internal Photos
M/N: Q85H

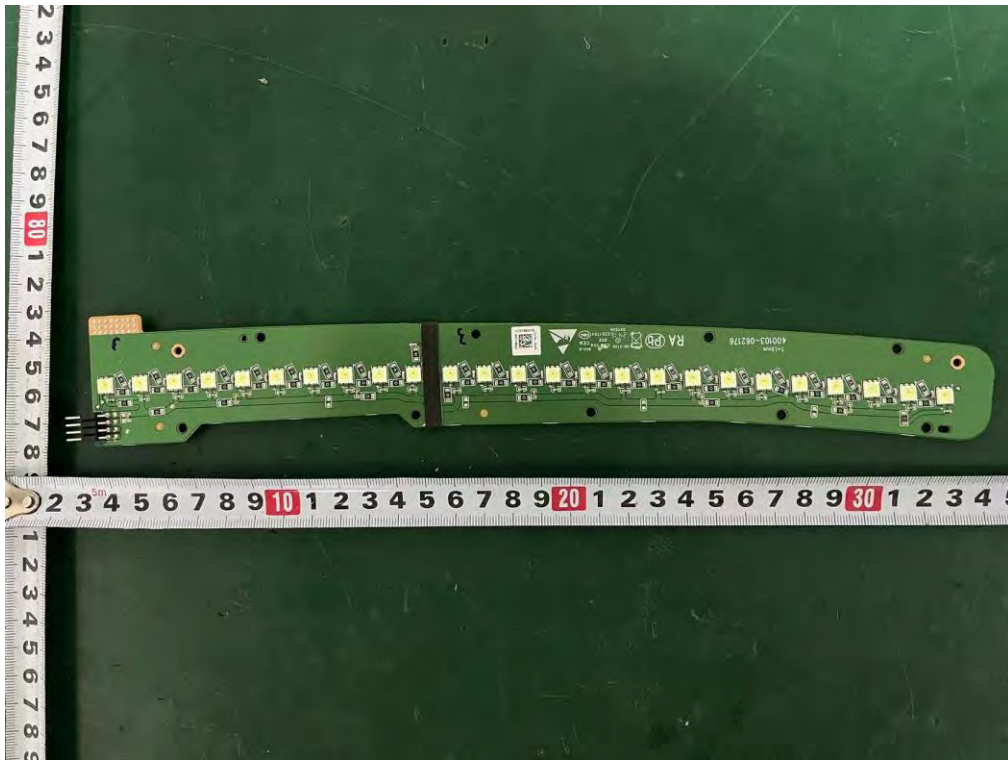


Internal Photos
M/N: Q85H



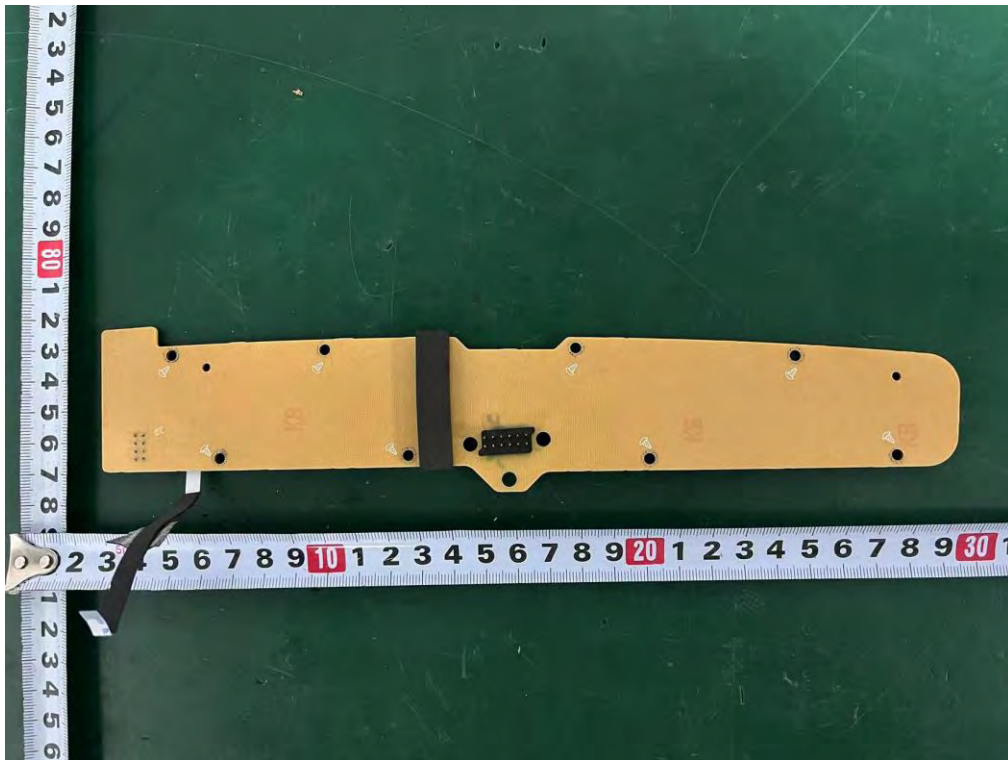
Internal Photos

M/N: Q85H

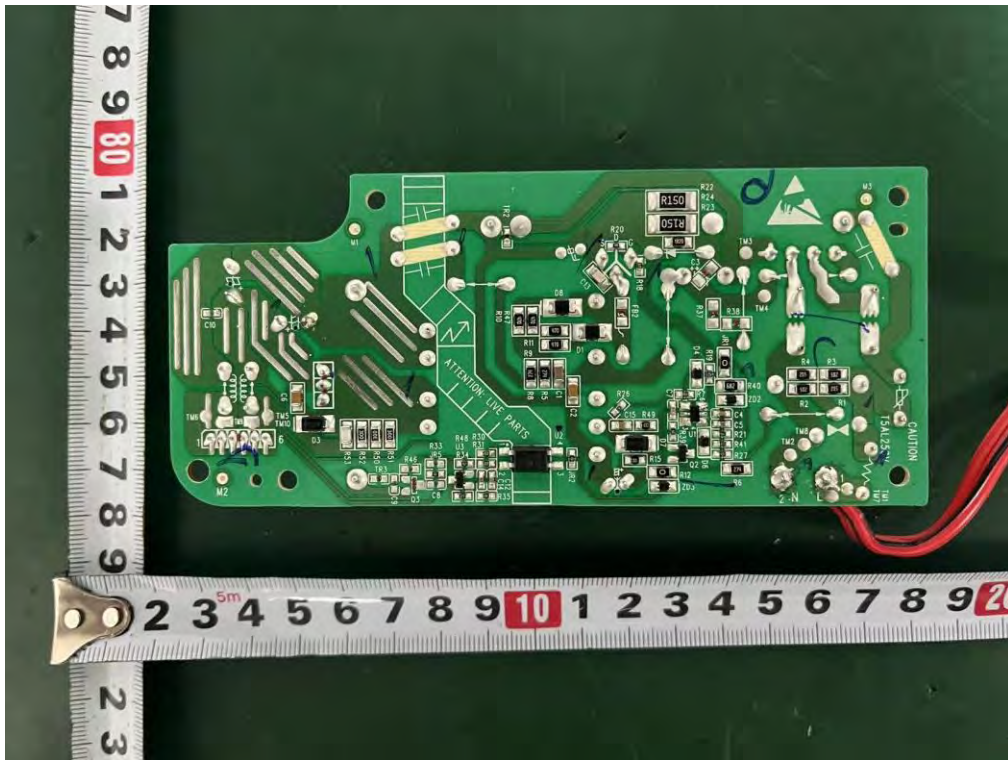


Internal Photos

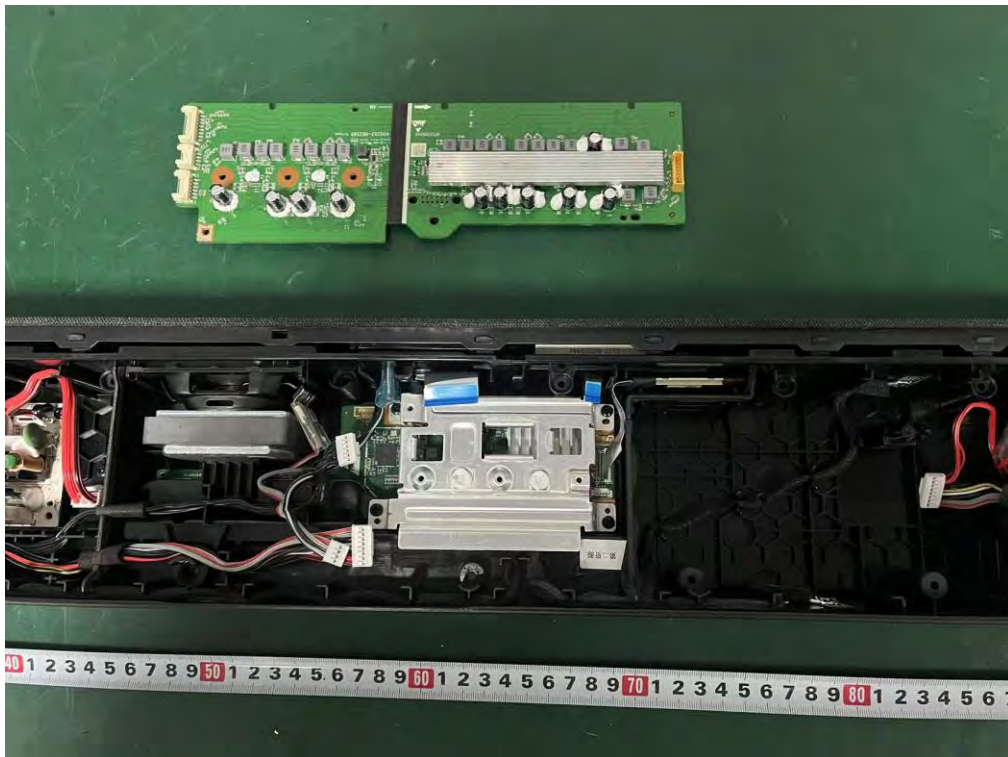
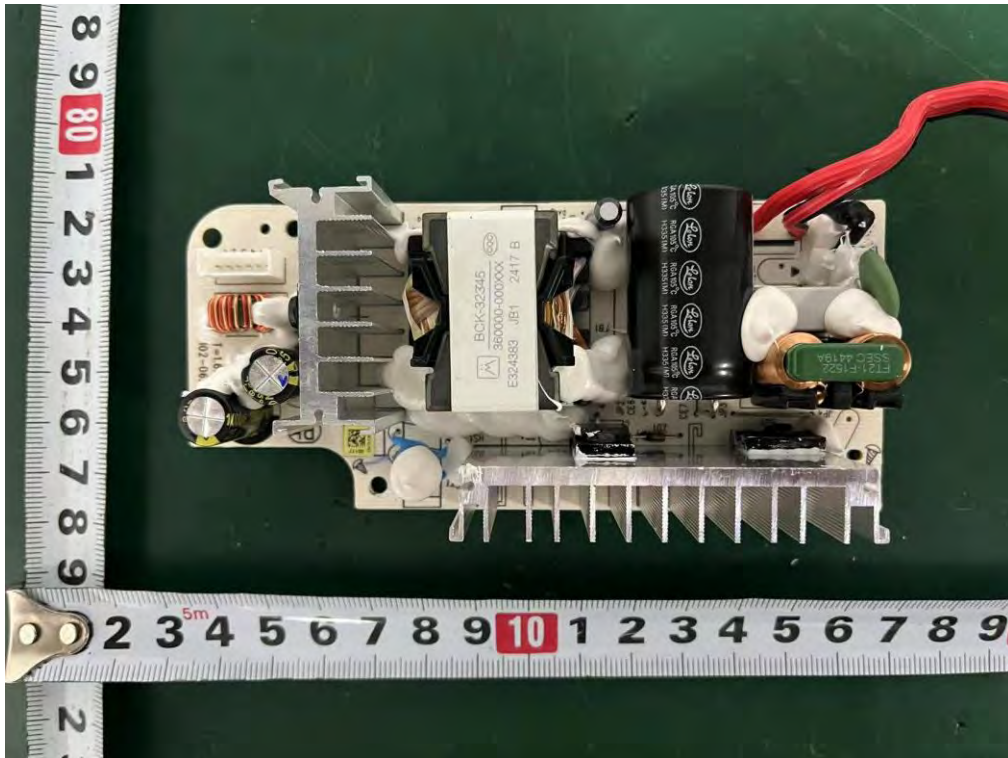
M/N: Q85H



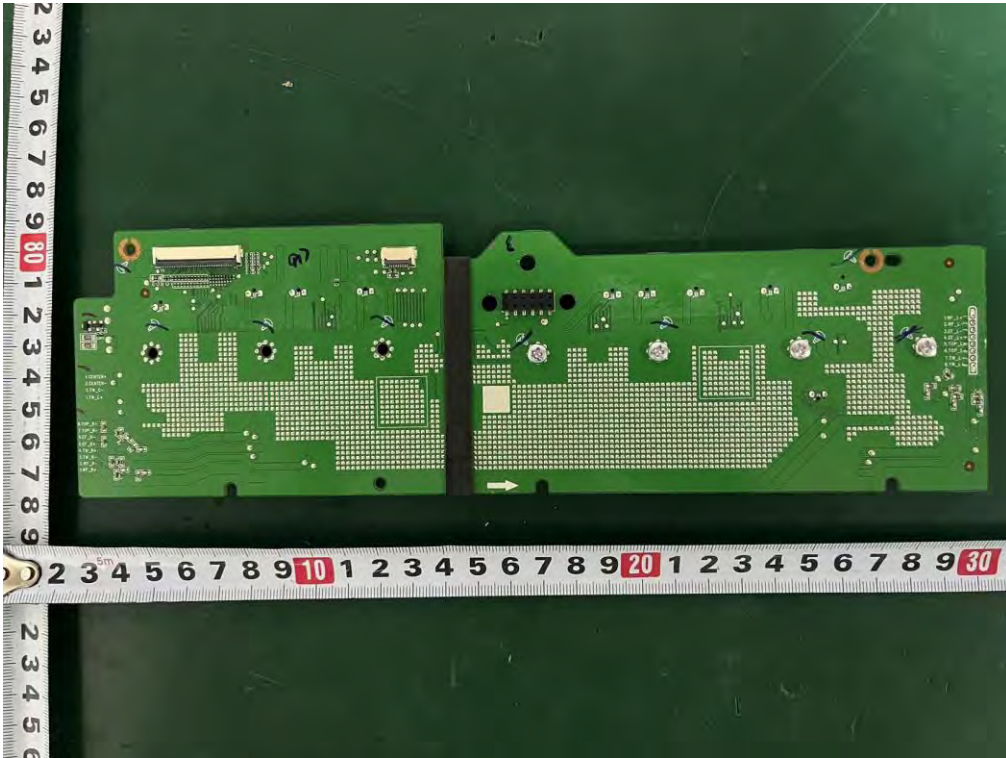
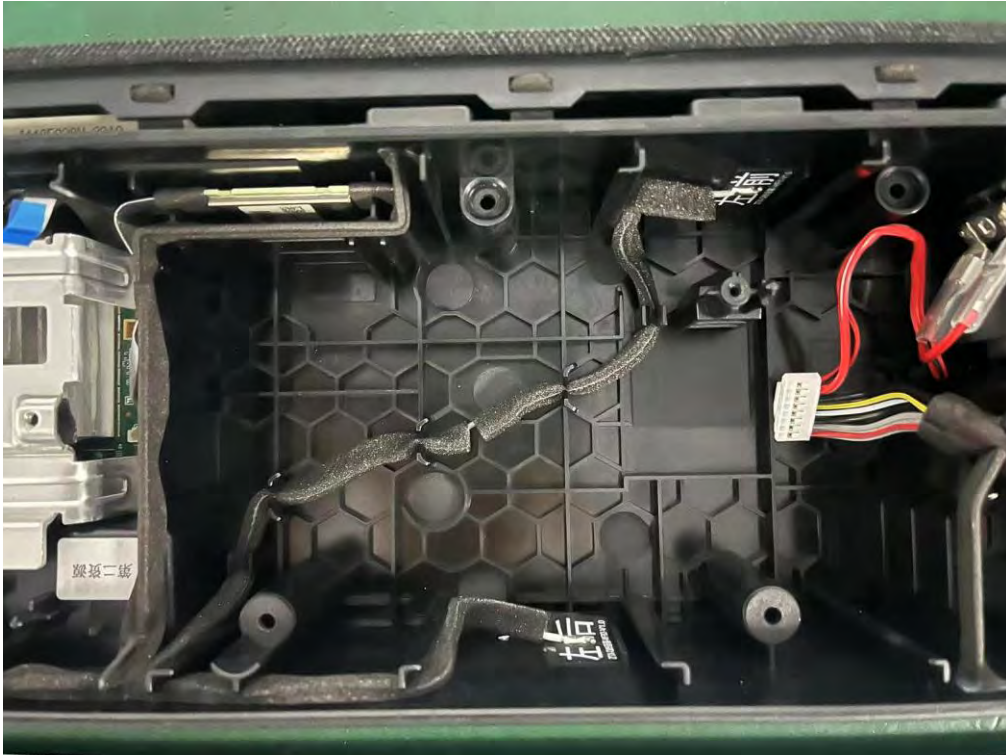
Internal Photos M/N: Q85H



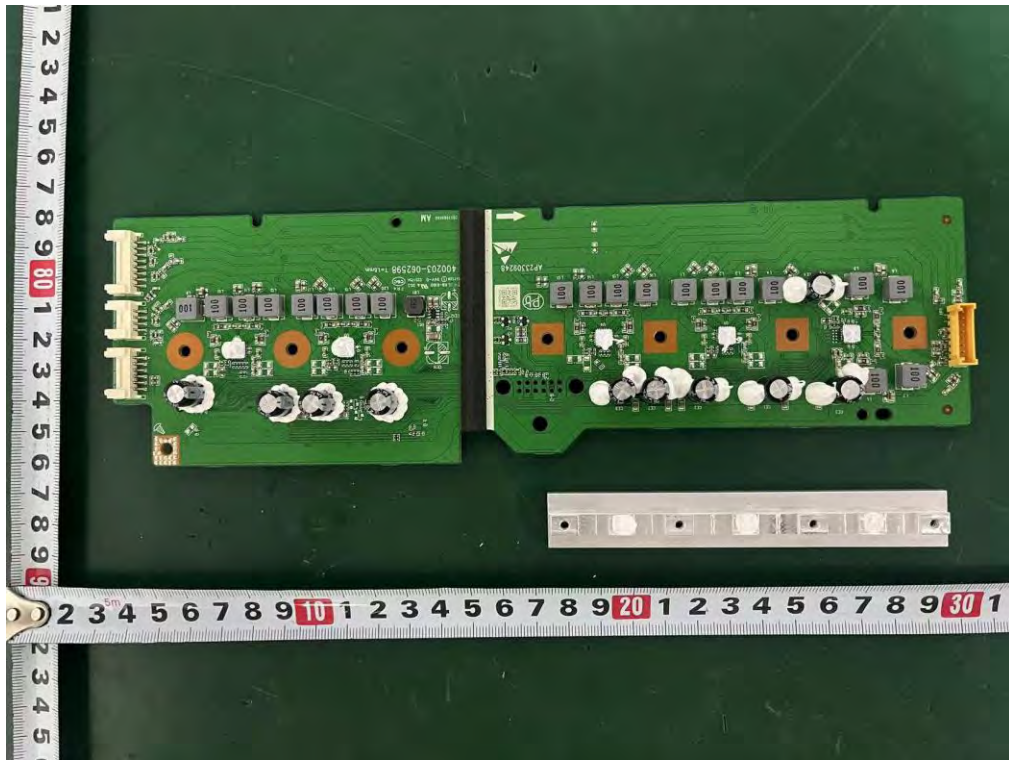
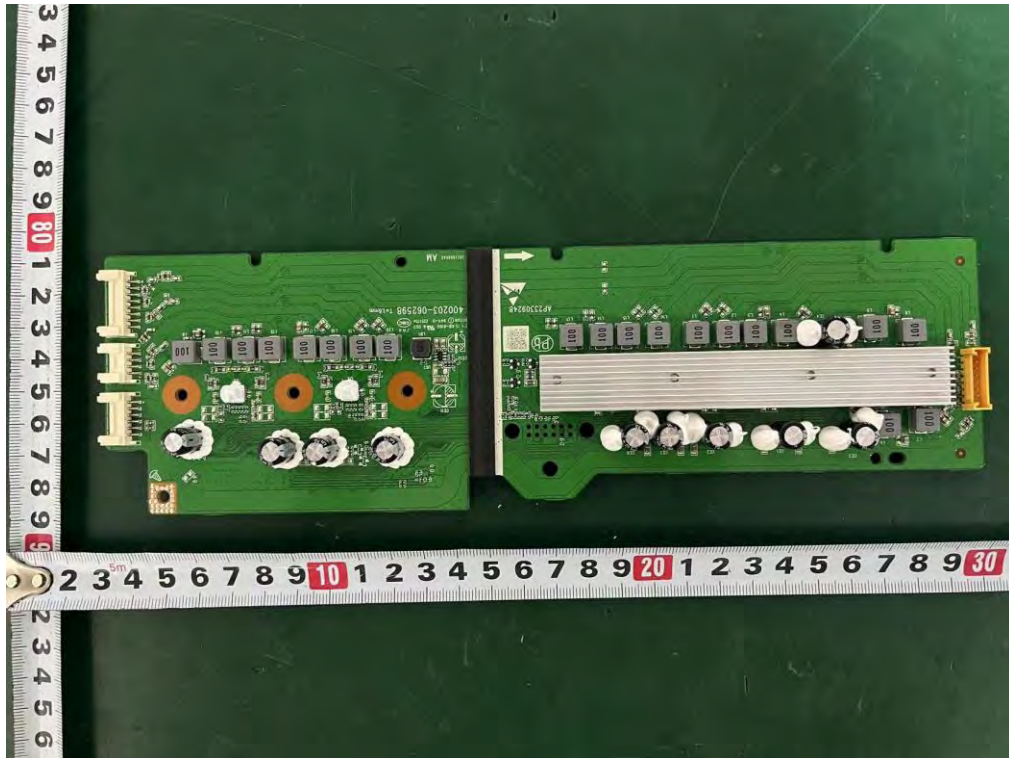
Internal Photos M/N: Q85H



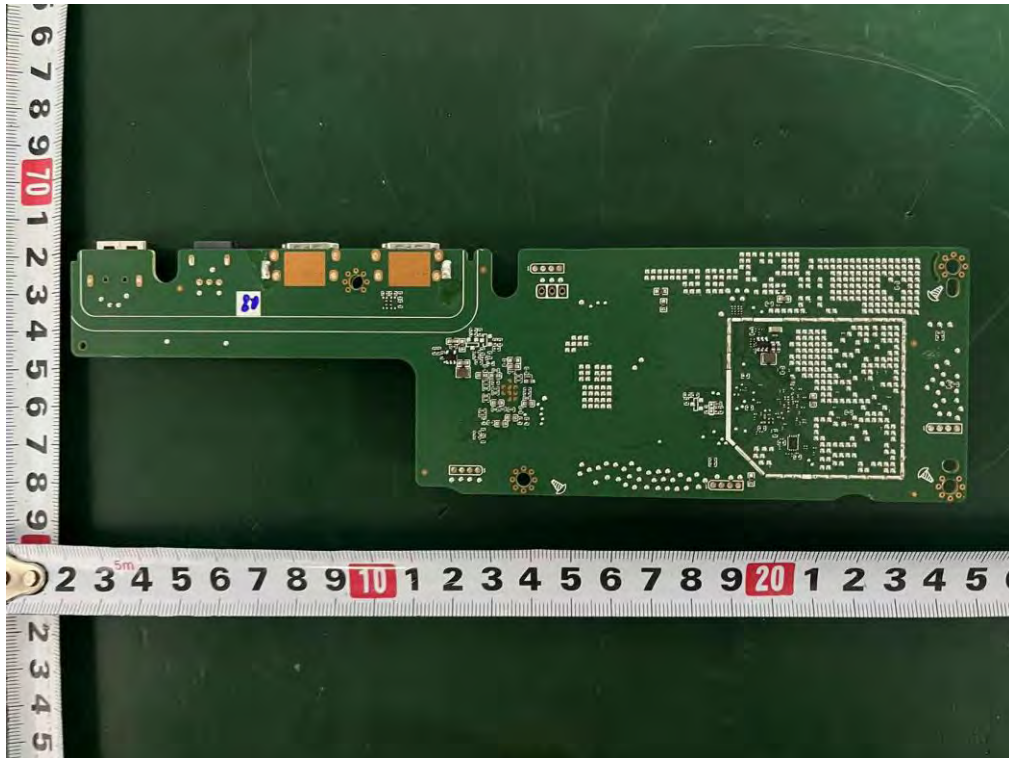
Internal Photos
M/N: Q85H



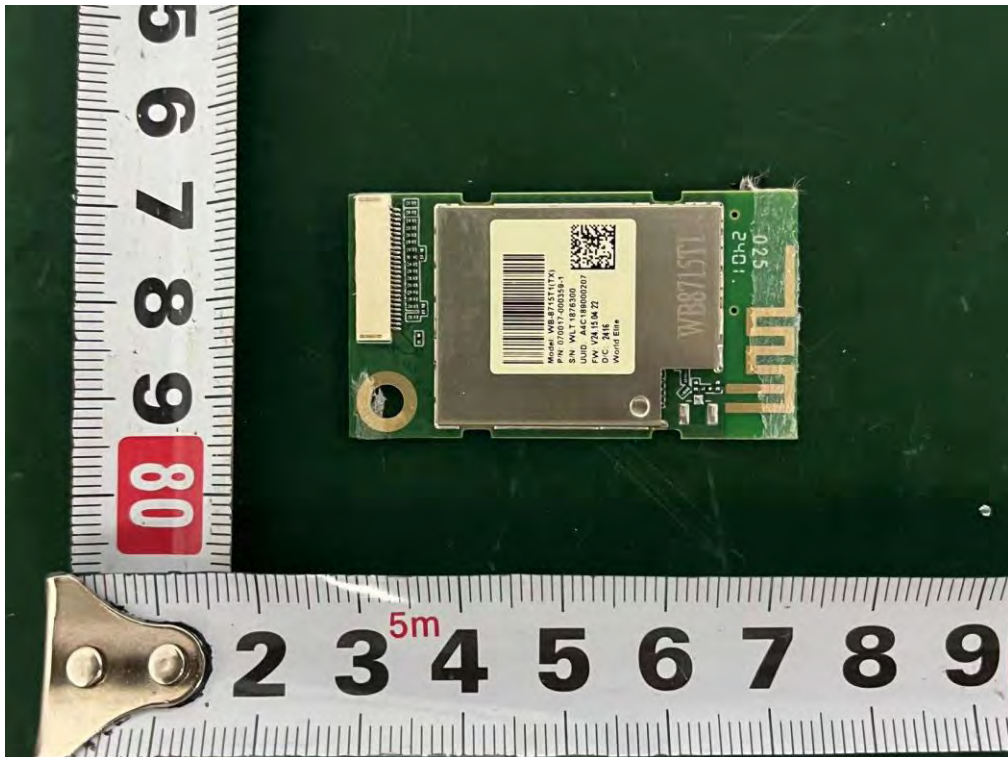
Internal Photos
M/N: Q85H



Internal Photos
M/N: Q85H

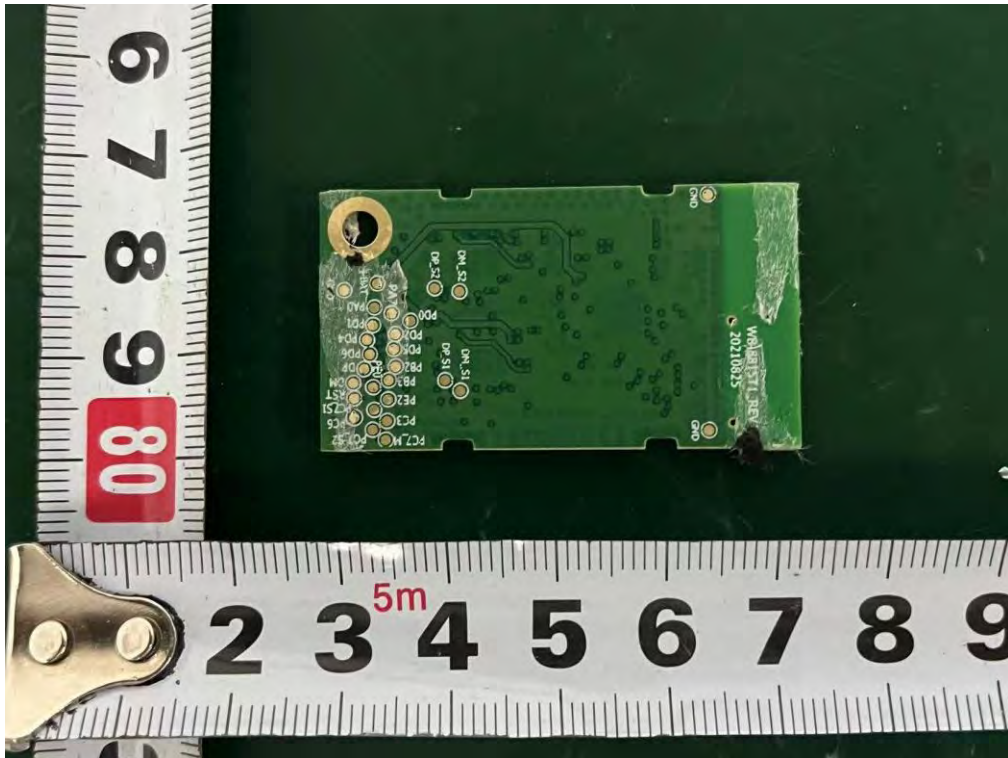


Internal Photos M/N: Q85H



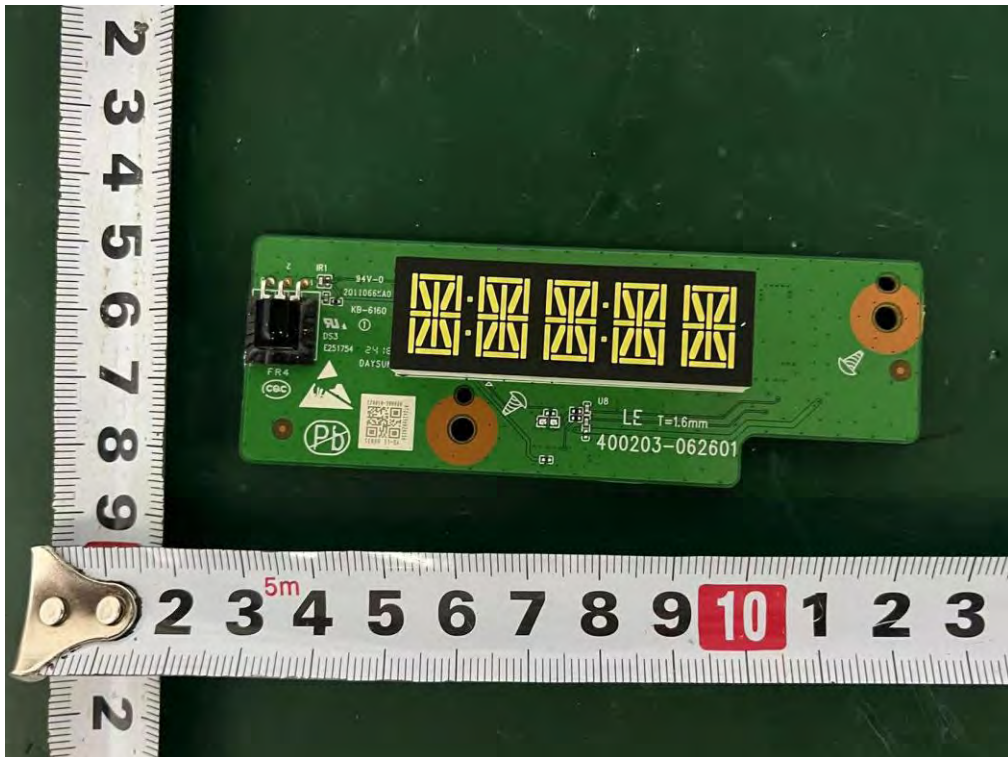
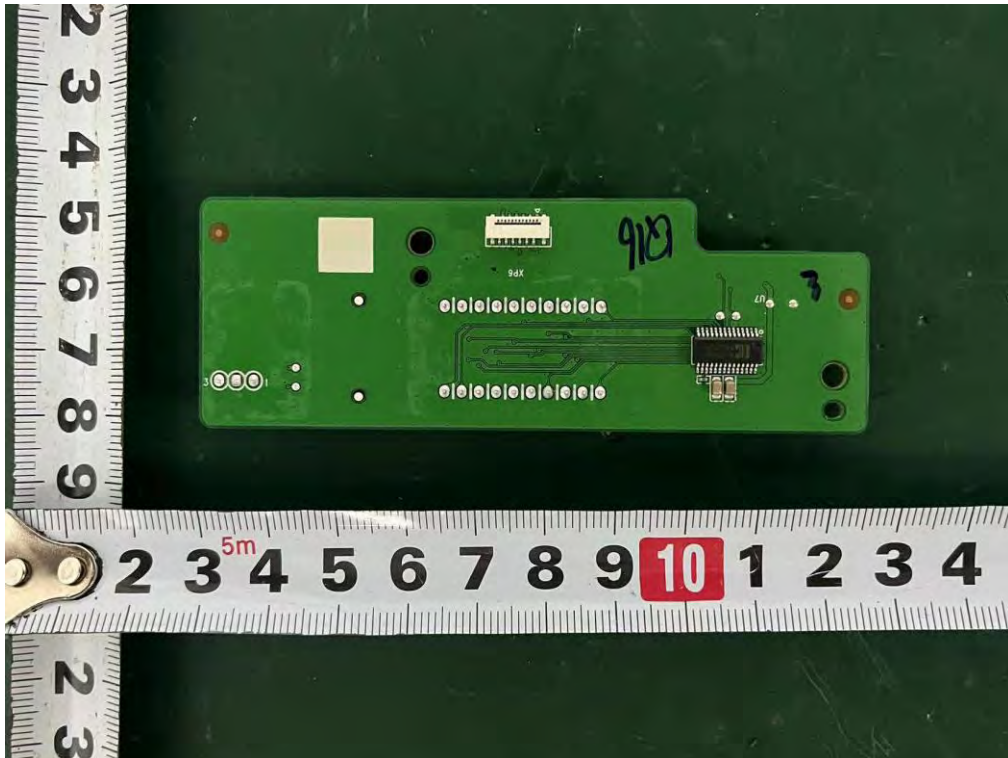
Internal Photos

M/N: Q85H

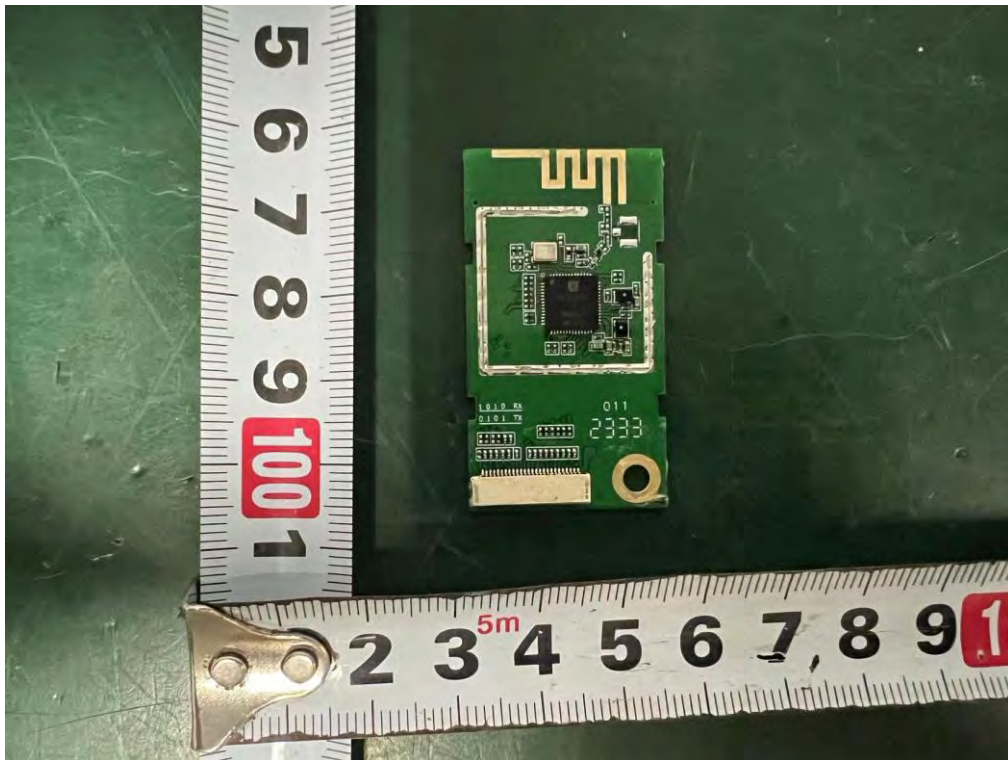


Internal Photos

M/N: Q85H



Internal Photos
M/N: Q85H



End of Test Report