

Appendix E: Band edge measurements
Test Result B4

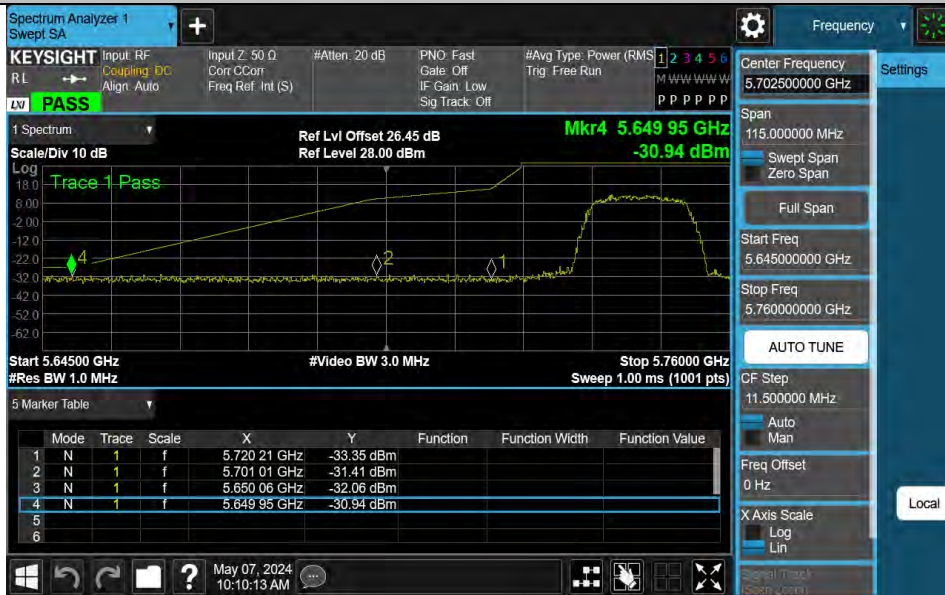
Test Mode	Antenna	Ch Name	Frequency[MHz]	FreqRange [MHz]	Result [dBm]	Limit [dBm]	Verdict
11A	Ant1	Low	5745	5720~5725	-33.35	≤16.08	PASS
11A	Ant1	Low	5745	5700~5720	-31.41	≤10.28	PASS
11A	Ant1	Low	5745	5650~5700	-32.06	≤-26.96	PASS
11A	Ant1	Low	5745	5760~5650	-30.94	≤-27	PASS
11A	Ant2	Low	5745	5720~5725	-31.7	≤15.82	PASS
11A	Ant2	Low	5745	5700~5720	-32.95	≤10.06	PASS
11A	Ant2	Low	5745	5650~5700	-31.89	≤-26.27	PASS
11A	Ant2	Low	5745	5760~5650	-30.47	≤-27	PASS
11A	Ant1	High	5825	5850~5855	-32.49	≤15.73	PASS
11A	Ant1	High	5825	5855~5875	-30.85	≤10.85	PASS
11A	Ant1	High	5825	5875~5925	-32.05	≤-26.71	PASS
11A	Ant1	High	5825	5925~5935	-31	≤-27	PASS
11A	Ant2	High	5825	5850~5855	-31.53	≤16.96	PASS
11A	Ant2	High	5825	5855~5875	-31.93	≤10.25	PASS
11A	Ant2	High	5825	5875~5925	-31.3	≤-26.31	PASS
11A	Ant2	High	5825	5925~5935	-30.91	≤-27	PASS
11N20MIMO	Ant1	Low	5745	5720~5725	-33.71	≤15.82	PASS
11N20MIMO	Ant1	Low	5745	5700~5720	-30.79	≤10.02	PASS
11N20MIMO	Ant1	Low	5745	5650~5700	-32.48	≤-26.96	PASS
11N20MIMO	Ant1	Low	5745	5760~5650	-31.65	≤-27	PASS
11N20MIMO	Ant2	Low	5745	5720~5725	-33.57	≤16.08	PASS
11N20MIMO	Ant2	Low	5745	5700~5720	-32.7	≤10.64	PASS
11N20MIMO	Ant2	Low	5745	5650~5700	-32.35	≤-26.79	PASS
11N20MIMO	Ant2	Low	5745	5760~5650	-32.03	≤-27	PASS
11N20MIMO	Ant1	High	5825	5850~5855	-31.75	≤16.96	PASS
11N20MIMO	Ant1	High	5825	5855~5875	-32	≤10.36	PASS
11N20MIMO	Ant1	High	5825	5875~5925	-30.64	≤-25.51	PASS
11N20MIMO	Ant1	High	5825	5925~5935	-31.2	≤-27	PASS
11N20MIMO	Ant2	High	5825	5850~5855	-32.77	≤15.73	PASS
11N20MIMO	Ant2	High	5825	5855~5875	-31.73	≤10.25	PASS
11N20MIMO	Ant2	High	5825	5875~5925	-32.48	≤-26.91	PASS
11N20MIMO	Ant2	High	5825	5925~5935	-31.78	≤-27	PASS
11N40MIMO	Ant1	Low	5755	5720~5725	-30.94	≤16.04	PASS
11N40MIMO	Ant1	Low	5755	5700~5720	-31.82	≤10.48	PASS
11N40MIMO	Ant1	Low	5755	5650~5700	-32.63	≤-26.70	PASS
11N40MIMO	Ant1	Low	5755	5780~5650	-31.55	≤-27	PASS
11N40MIMO	Ant2	Low	5755	5720~5725	-40.3	≤16.35	PASS
11N40MIMO	Ant2	Low	5755	5700~5720	-40.49	≤10.06	PASS
11N40MIMO	Ant2	Low	5755	5650~5700	-42.24	≤-26.50	PASS
11N40MIMO	Ant2	Low	5755	5780~5650	-40.88	≤-27	PASS
11N40MIMO	Ant1	High	5795	5850~5855	-33.44	≤15.66	PASS
11N40MIMO	Ant1	High	5795	5855~5875	-30.37	≤10.76	PASS
11N40MIMO	Ant1	High	5795	5875~5925	-32.97	≤-26.71	PASS
11N40MIMO	Ant1	High	5795	5925~5935	-31.56	≤-27	PASS
11N40MIMO	Ant2	High	5795	5850~5855	-33.31	≤16.03	PASS
11N40MIMO	Ant2	High	5795	5855~5875	-31.65	≤10.57	PASS
11N40MIMO	Ant2	High	5795	5875~5925	-31.87	≤-25.85	PASS
11N40MIMO	Ant2	High	5795	5925~5935	-31.25	≤-27	PASS
11AC20MIMO	Ant1	Low	5745	5720~5725	-33.04	≤16.87	PASS
11AC20MIMO	Ant1	Low	5745	5700~5720	-32.34	≤10.06	PASS
11AC20MIMO	Ant1	Low	5745	5650~5700	-30.26	≤-24.91	PASS
11AC20MIMO	Ant1	Low	5745	5760~5650	-30.71	≤-27	PASS



11AC20MIMO	Ant2	Low	5745	5720~5725	-31.24	≤15.82	PASS
11AC20MIMO	Ant2	Low	5745	5700~5720	-31.77	≤10.18	PASS
11AC20MIMO	Ant2	Low	5745	5650~5700	-33.06	≤-26.96	PASS
11AC20MIMO	Ant2	Low	5745	5760~5650	-29.96	≤-27	PASS
11AC20MIMO	Ant1	High	5825	5850~5855	-31.62	≤16.96	PASS
11AC20MIMO	Ant1	High	5825	5855~5875	-31.33	≤10.40	PASS
11AC20MIMO	Ant1	High	5825	5875~5925	-31.87	≤-26.81	PASS
11AC20MIMO	Ant1	High	5825	5925~5935	-30.96	≤-27	PASS
11AC20MIMO	Ant2	High	5825	5850~5855	-31.7	≤15.73	PASS
11AC20MIMO	Ant2	High	5825	5855~5875	-31.1	≤10.89	PASS
11AC20MIMO	Ant2	High	5825	5875~5925	-32.09	≤-26.61	PASS
11AC20MIMO	Ant2	High	5825	5925~5935	-31.36	≤-27	PASS
11AC40MIMO	Ant1	Low	5755	5720~5725	-30.29	≤16.04	PASS
11AC40MIMO	Ant1	Low	5755	5700~5720	-32.38	≤10.21	PASS
11AC40MIMO	Ant1	Low	5755	5650~5700	-31.24	≤-25.71	PASS
11AC40MIMO	Ant1	Low	5755	5780~5650	-31.68	≤-27	PASS
11AC40MIMO	Ant2	Low	5755	5720~5725	-33.05	≤16.04	PASS
11AC40MIMO	Ant2	Low	5755	5700~5720	-31.42	≤10.67	PASS
11AC40MIMO	Ant2	Low	5755	5650~5700	-31.93	≤-26.50	PASS
11AC40MIMO	Ant2	Low	5755	5780~5650	-31.56	≤-27	PASS
11AC40MIMO	Ant1	High	5795	5850~5855	-33.73	≤15.66	PASS
11AC40MIMO	Ant1	High	5795	5855~5875	-31.43	≤10.57	PASS
11AC40MIMO	Ant1	High	5795	5875~5925	-30.85	≤-26.34	PASS
11AC40MIMO	Ant1	High	5795	5925~5935	-31.74	≤-27	PASS
11AC40MIMO	Ant2	High	5795	5850~5855	-32.83	≤16.79	PASS
11AC40MIMO	Ant2	High	5795	5855~5875	-31.98	≤10.62	PASS
11AC40MIMO	Ant2	High	5795	5875~5925	-31.86	≤-26.95	PASS
11AC40MIMO	Ant2	High	5795	5925~5935	-31.14	≤-27	PASS
11AC80MIMO	Ant1	Low	5775	5720~5725	-30.06	≤17.77	PASS
11AC80MIMO	Ant1	Low	5775	5700~5720	-30.55	≤10.74	PASS
11AC80MIMO	Ant1	Low	5775	5650~5700	-31.95	≤-26.34	PASS
11AC80MIMO	Ant1	Low	5775	5800~5650	-32.47	≤-27	PASS
11AC80MIMO	Ant1	High	5775	5850~5855	-32.61	≤15.84	PASS
11AC80MIMO	Ant1	High	5775	5855~5875	-30.89	≤10.76	PASS
11AC80MIMO	Ant1	High	5775	5875~5925	-31.57	≤-25.78	PASS
11AC80MIMO	Ant1	High	5775	5925~5935	-30.69	≤-27	PASS
11AC80MIMO	Ant2	Low	5775	5720~5725	-30.25	≤15.65	PASS
11AC80MIMO	Ant2	Low	5775	5700~5720	-31.31	≤10.05	PASS
11AC80MIMO	Ant2	Low	5775	5650~5700	-30.84	≤-25.77	PASS
11AC80MIMO	Ant2	Low	5775	5800~5650	-31.72	≤-27	PASS
11AC80MIMO	Ant2	High	5775	5850~5855	-33.1	≤15.84	PASS
11AC80MIMO	Ant2	High	5775	5855~5875	-31.1	≤11.07	PASS
11AC80MIMO	Ant2	High	5775	5875~5925	-32.26	≤-26.87	PASS
11AC80MIMO	Ant2	High	5775	5925~5935	-31.05	≤-27	PASS

Test Graphs B4

11A-Ant1-5745-PASS



11A-Ant2-5745-PASS



11A-Ant1-5825-PASS



11A-Ant2-5825-PASS

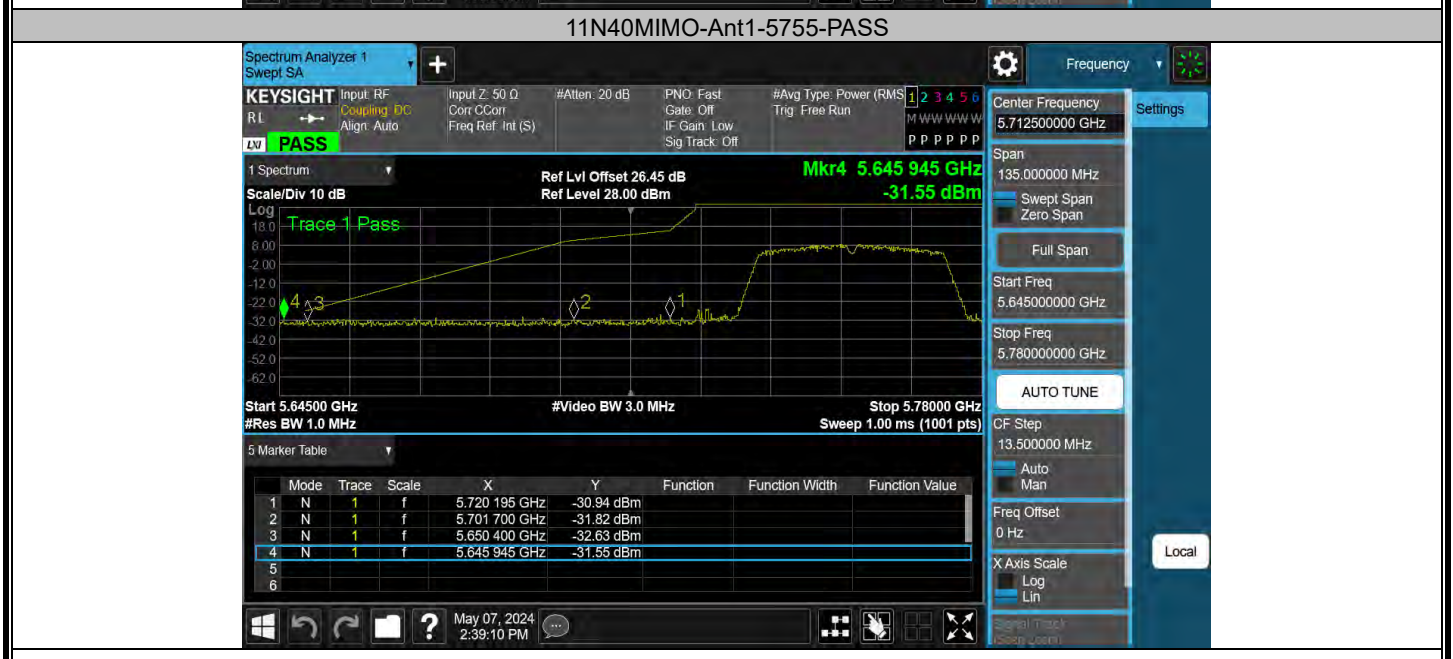
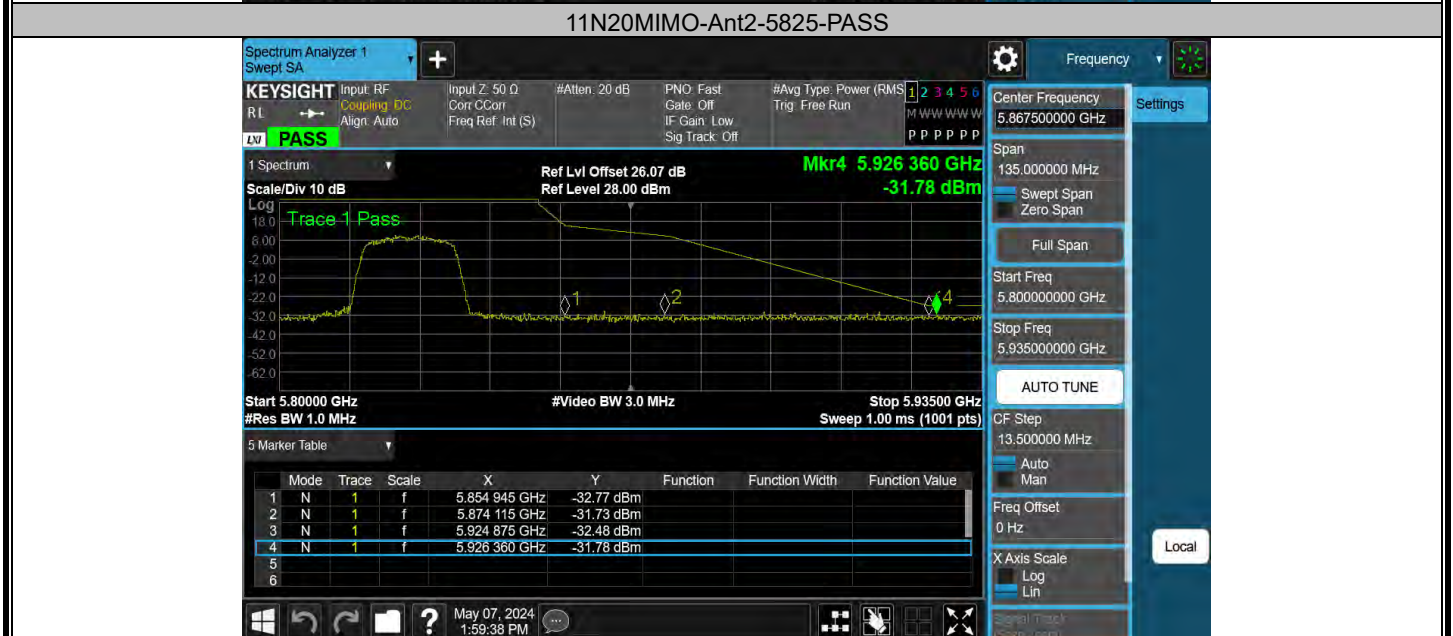
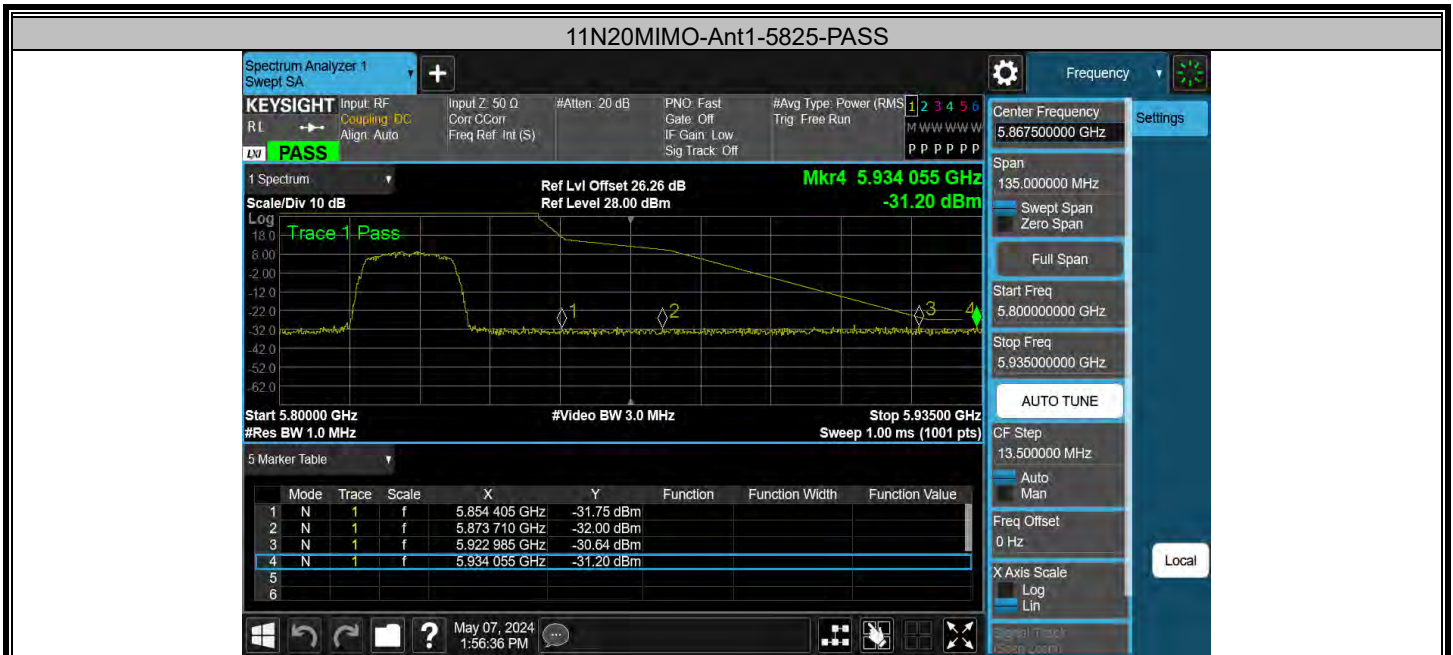


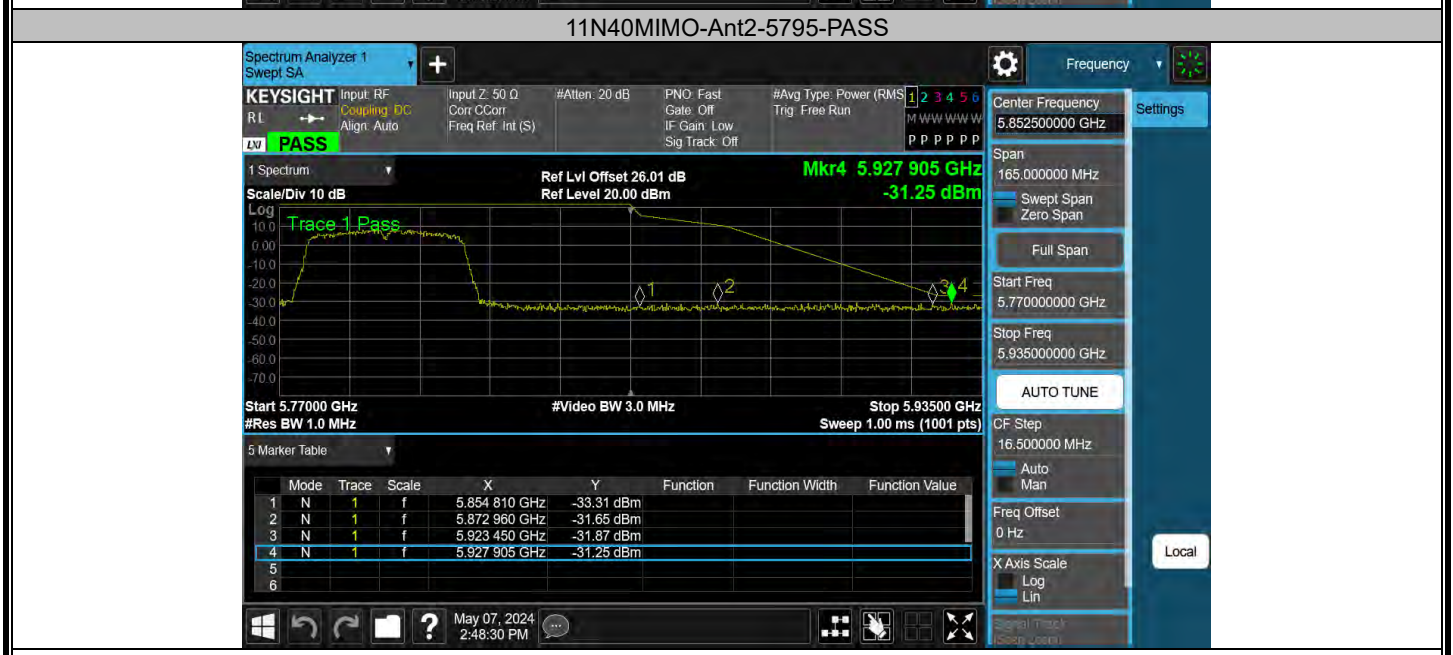
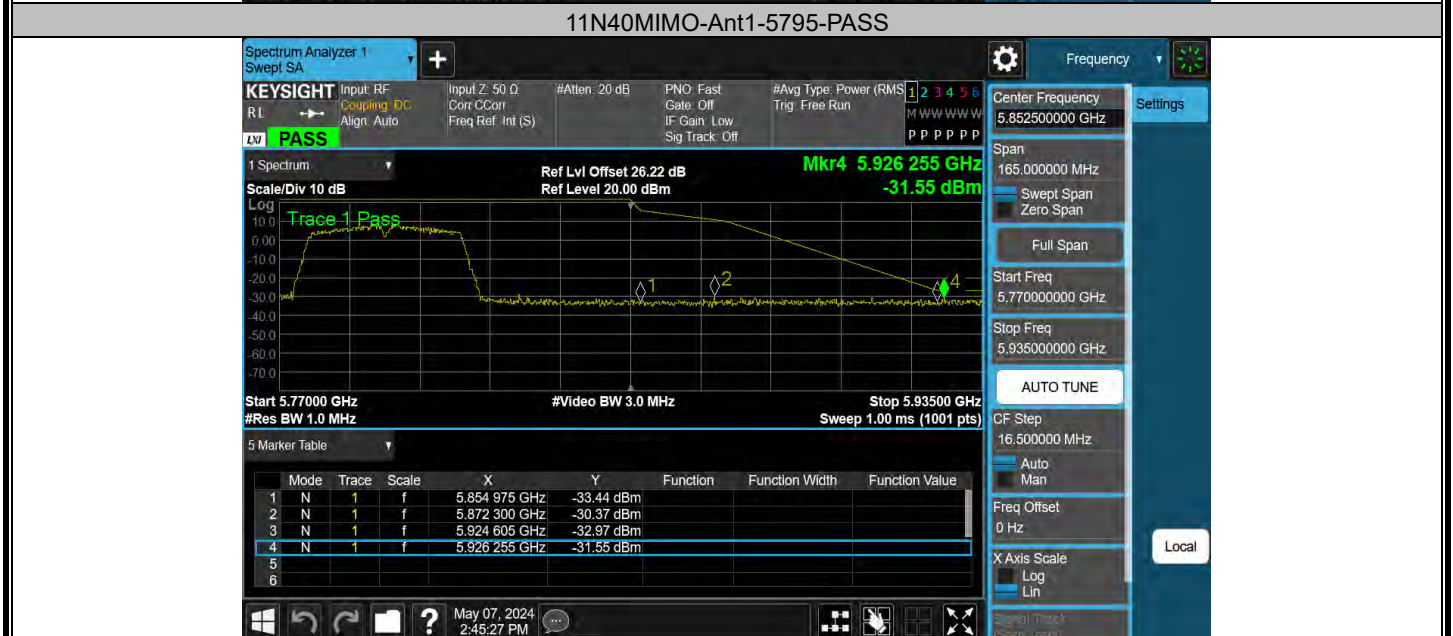
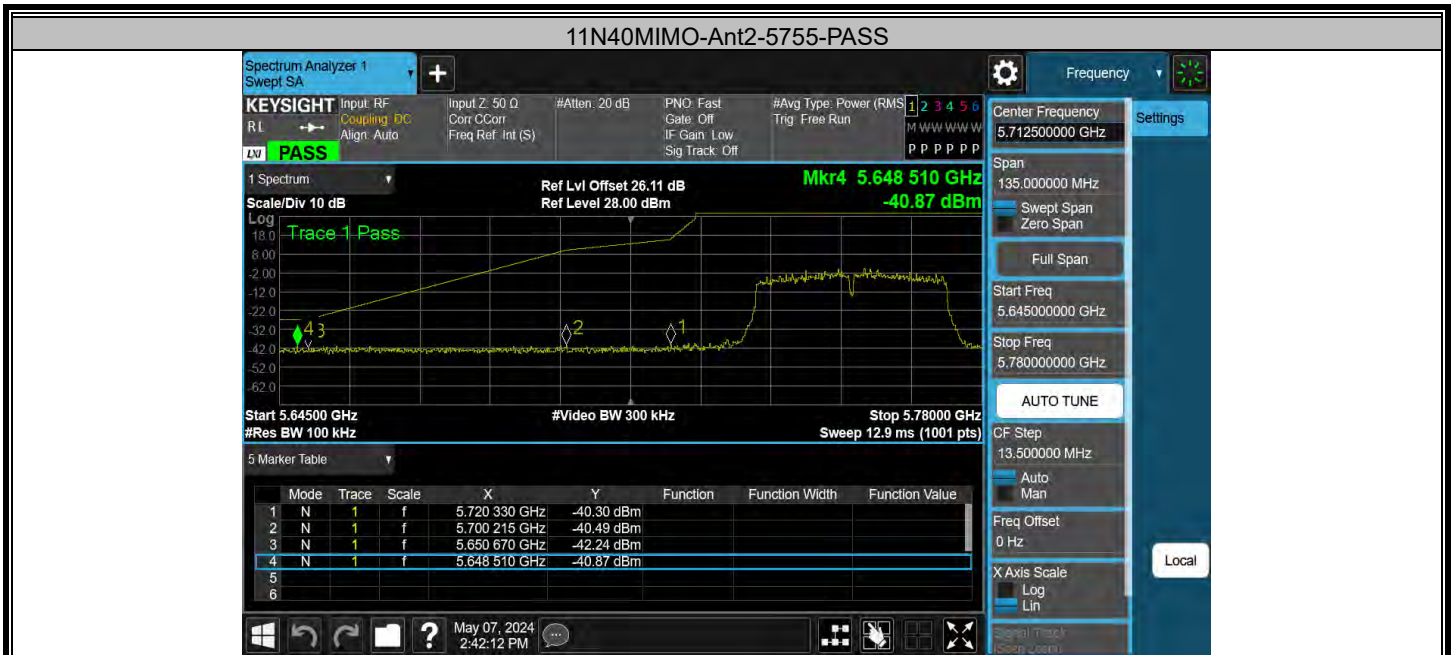
11N20MIMO-Ant1-5745-PASS

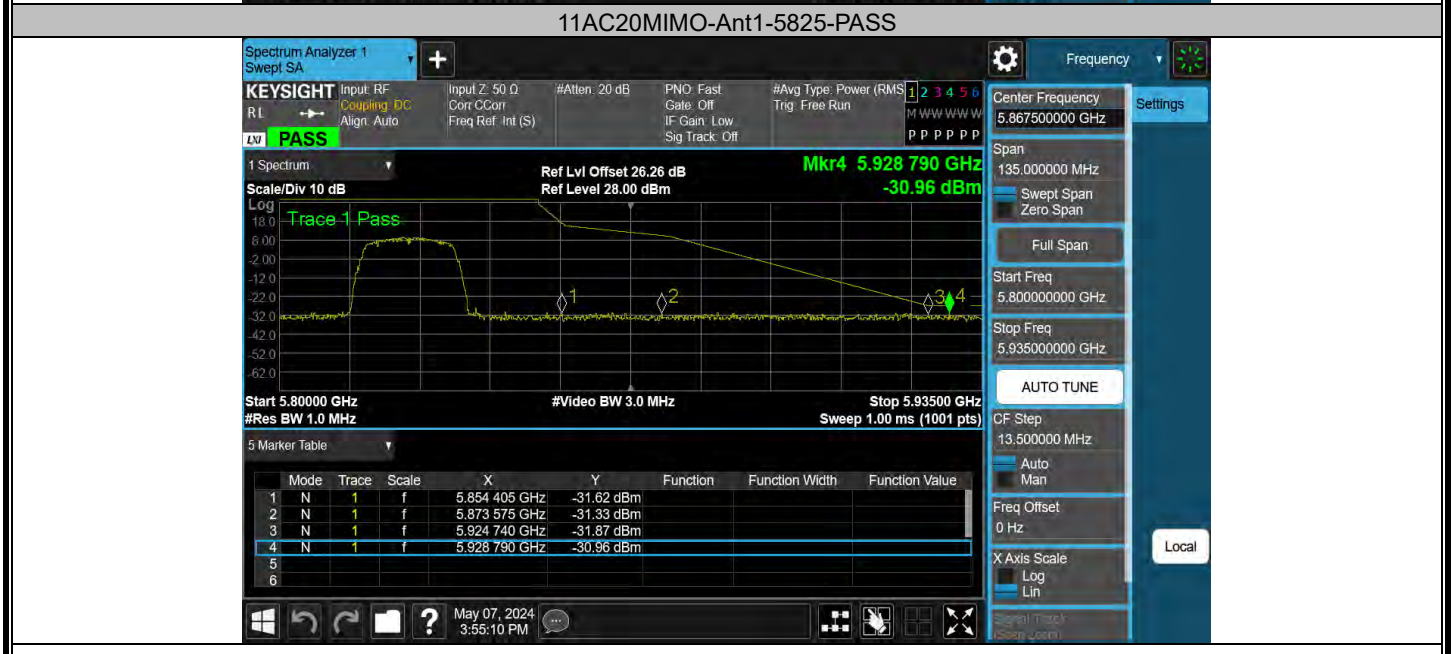
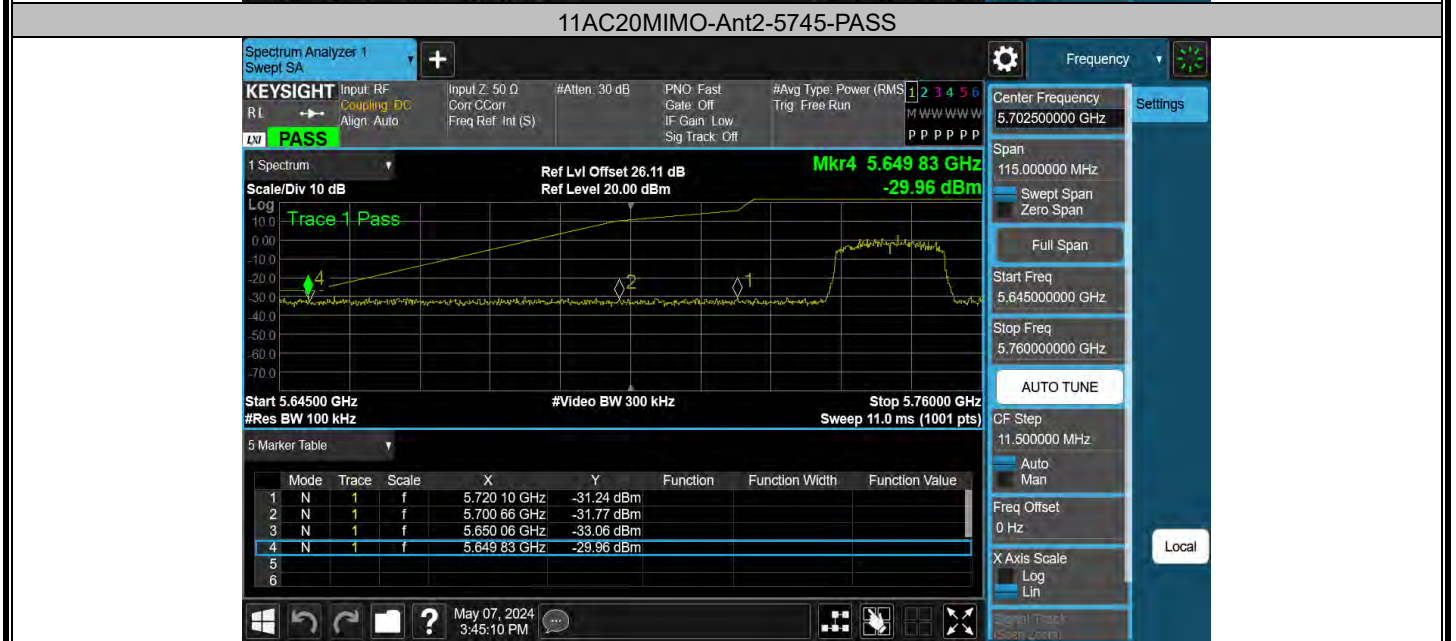
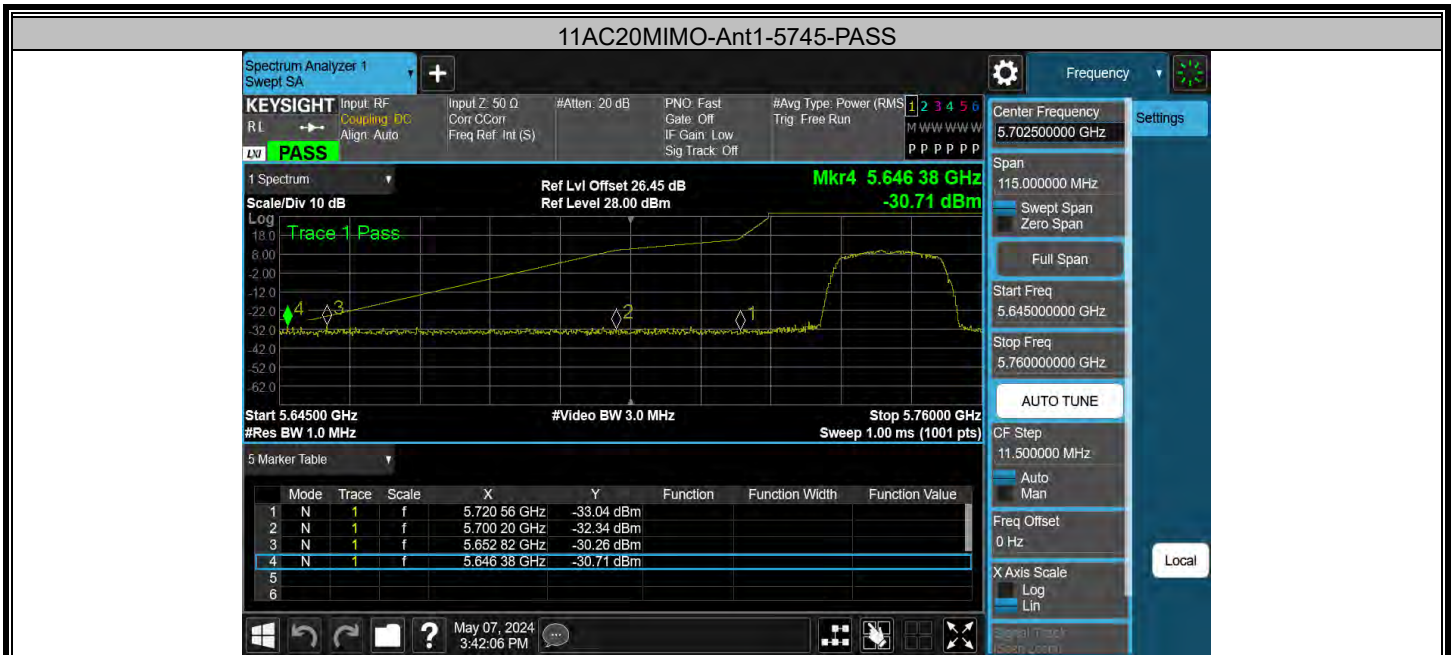


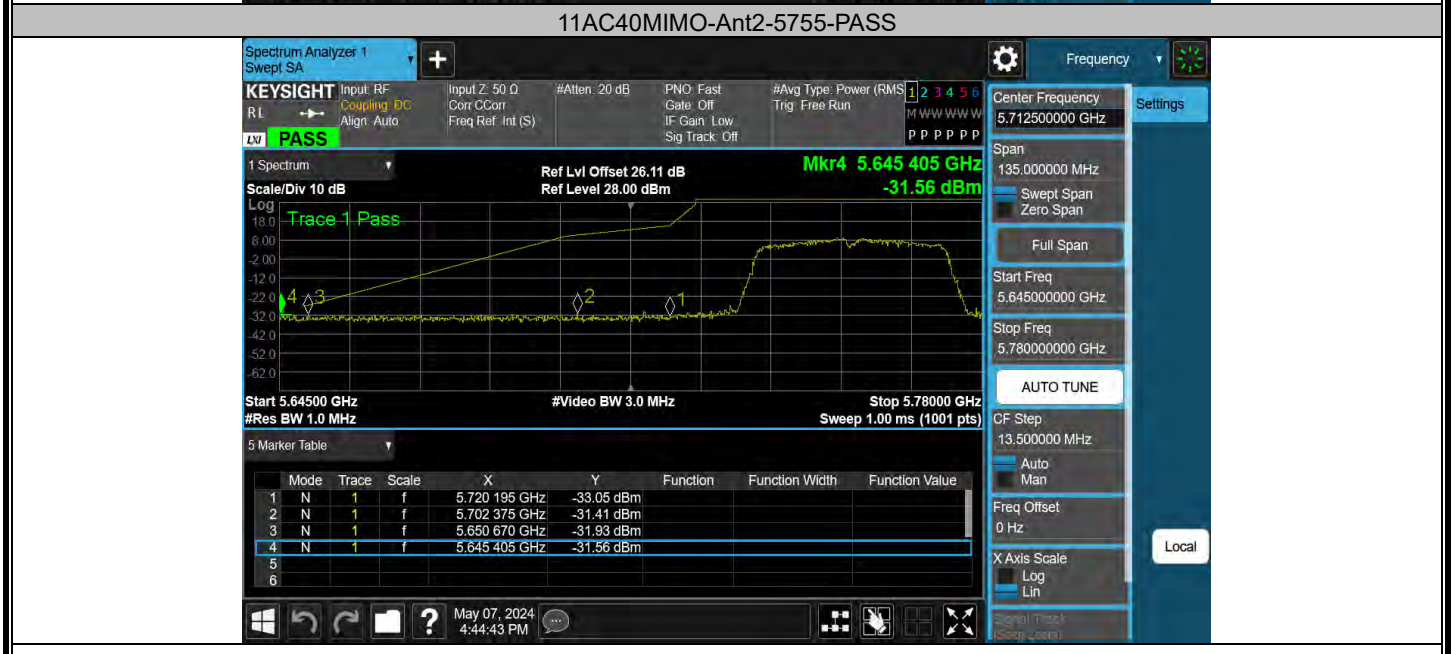
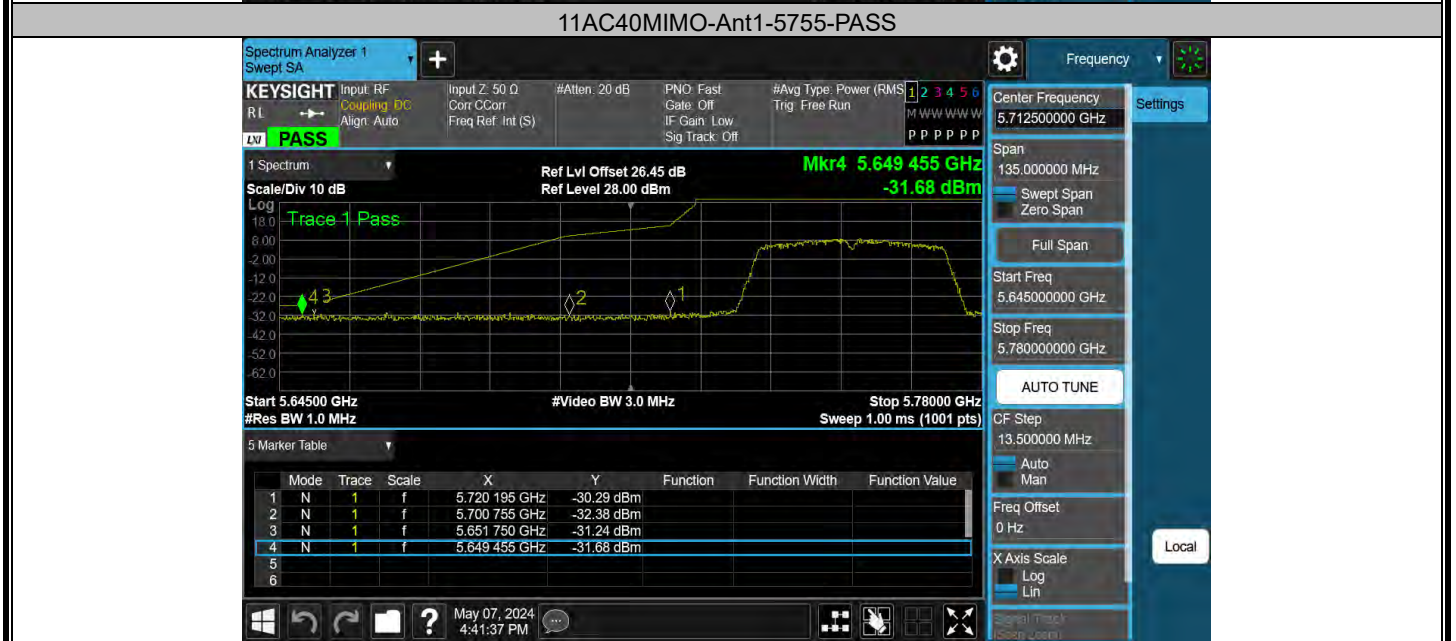
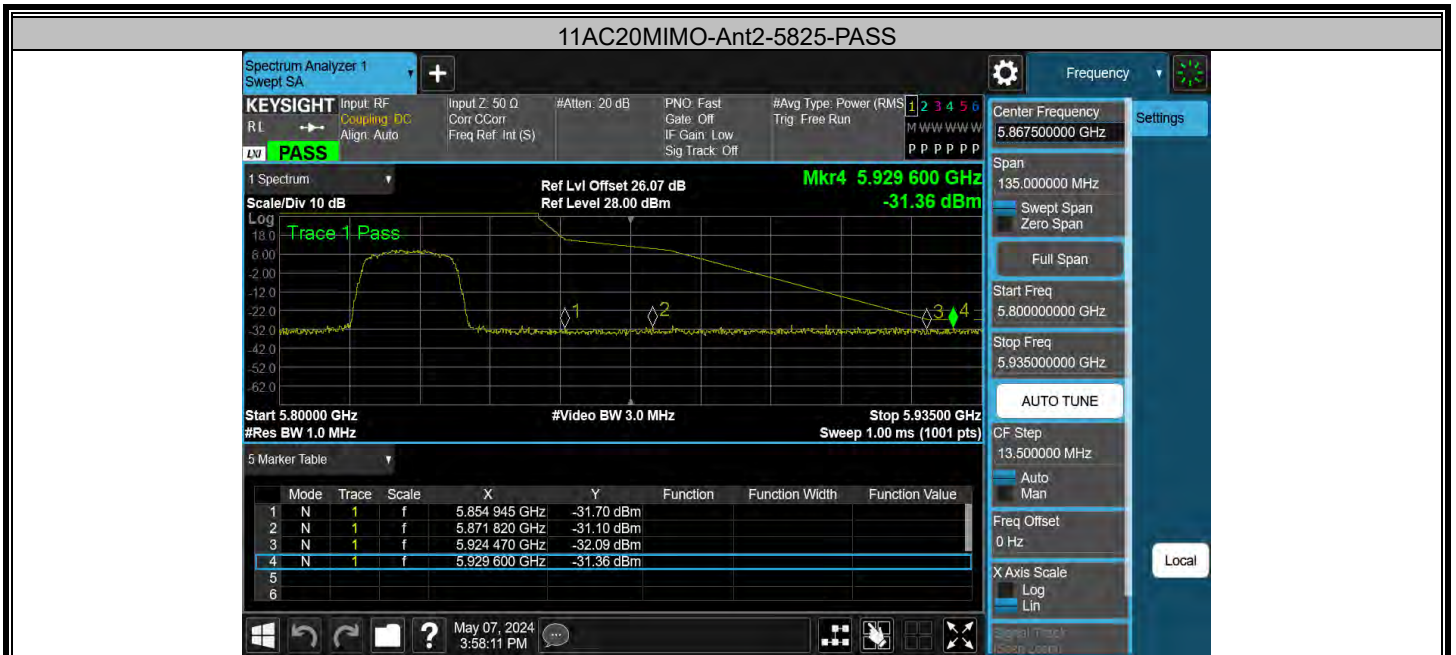
11N20MIMO-Ant2-5745-PASS

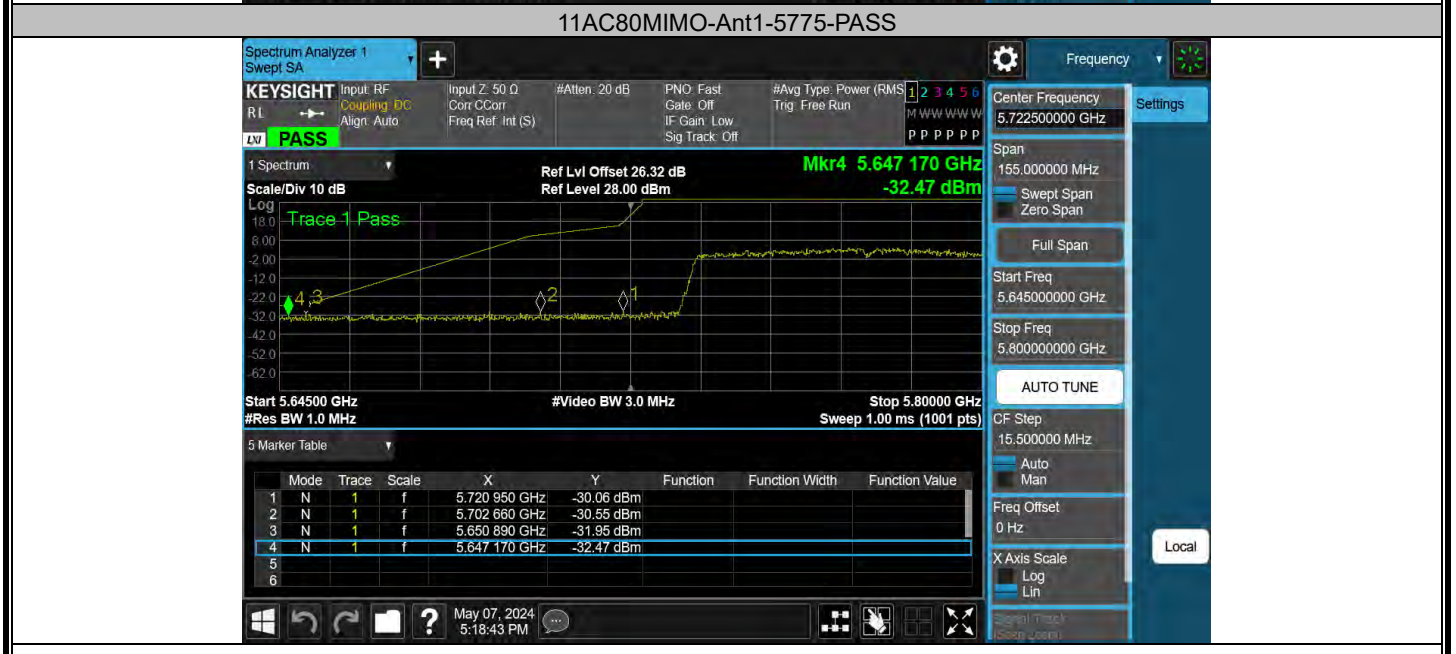
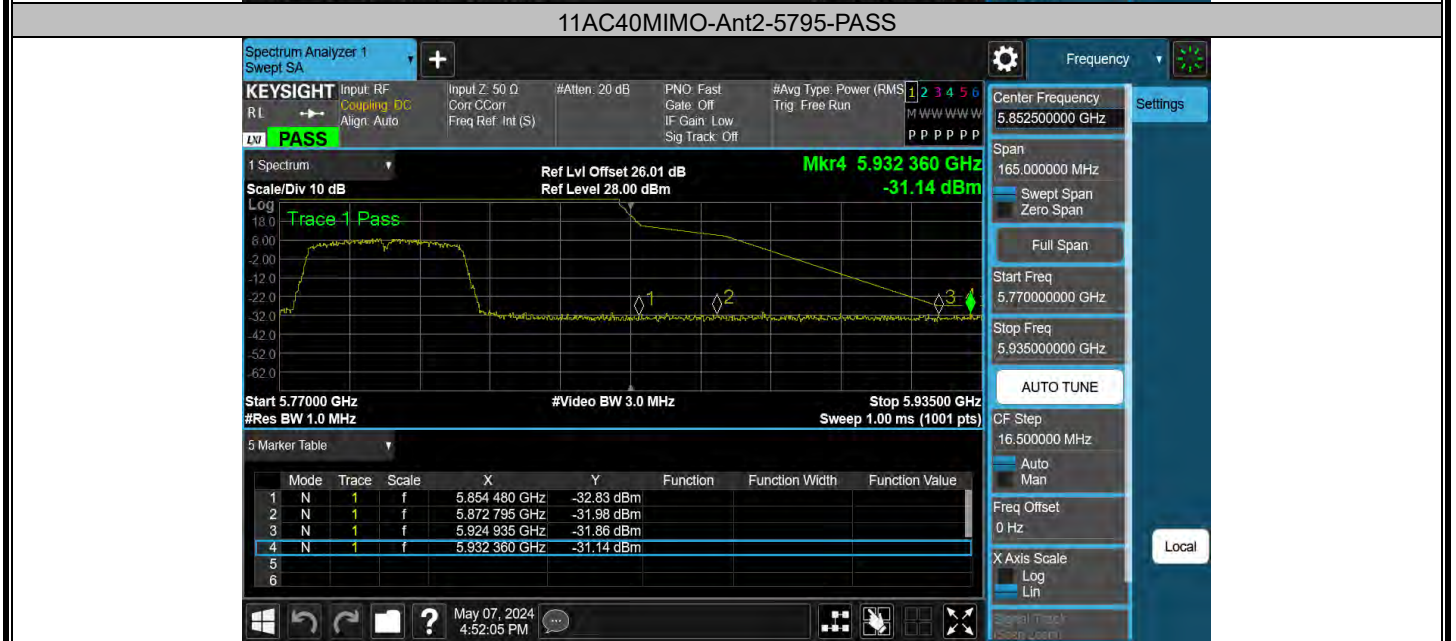
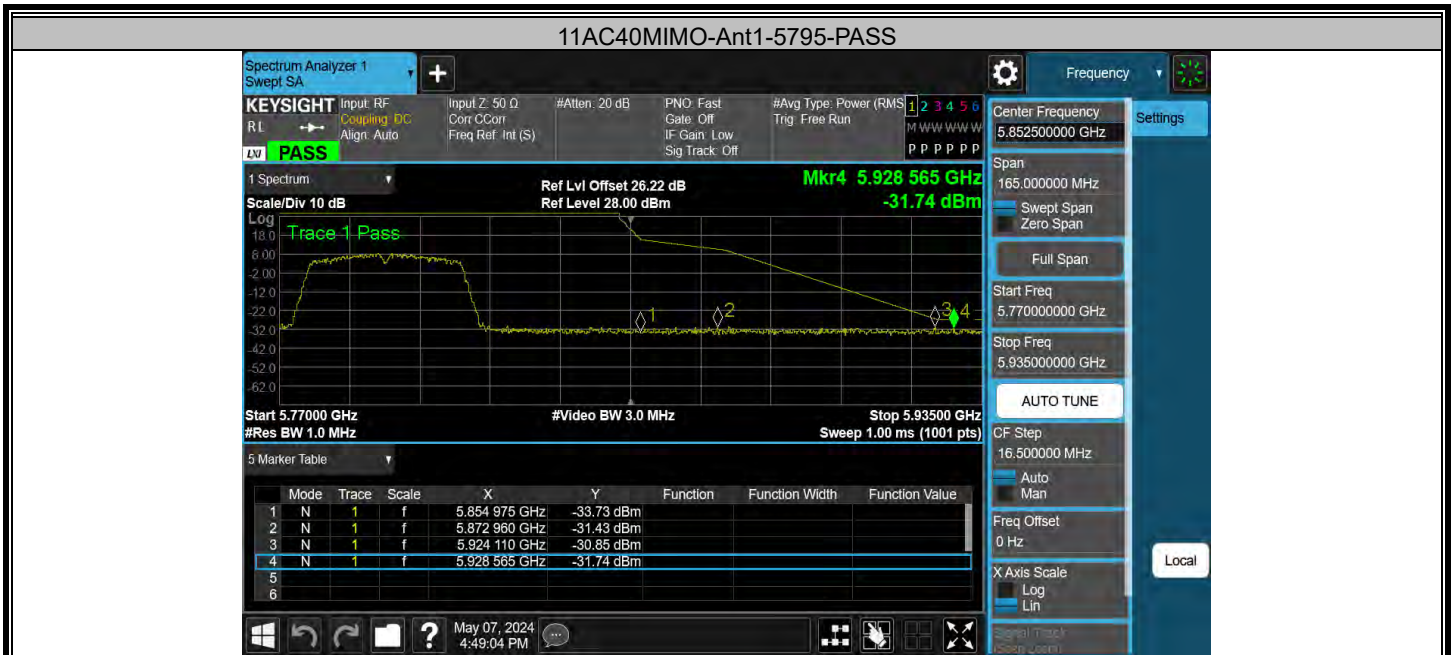


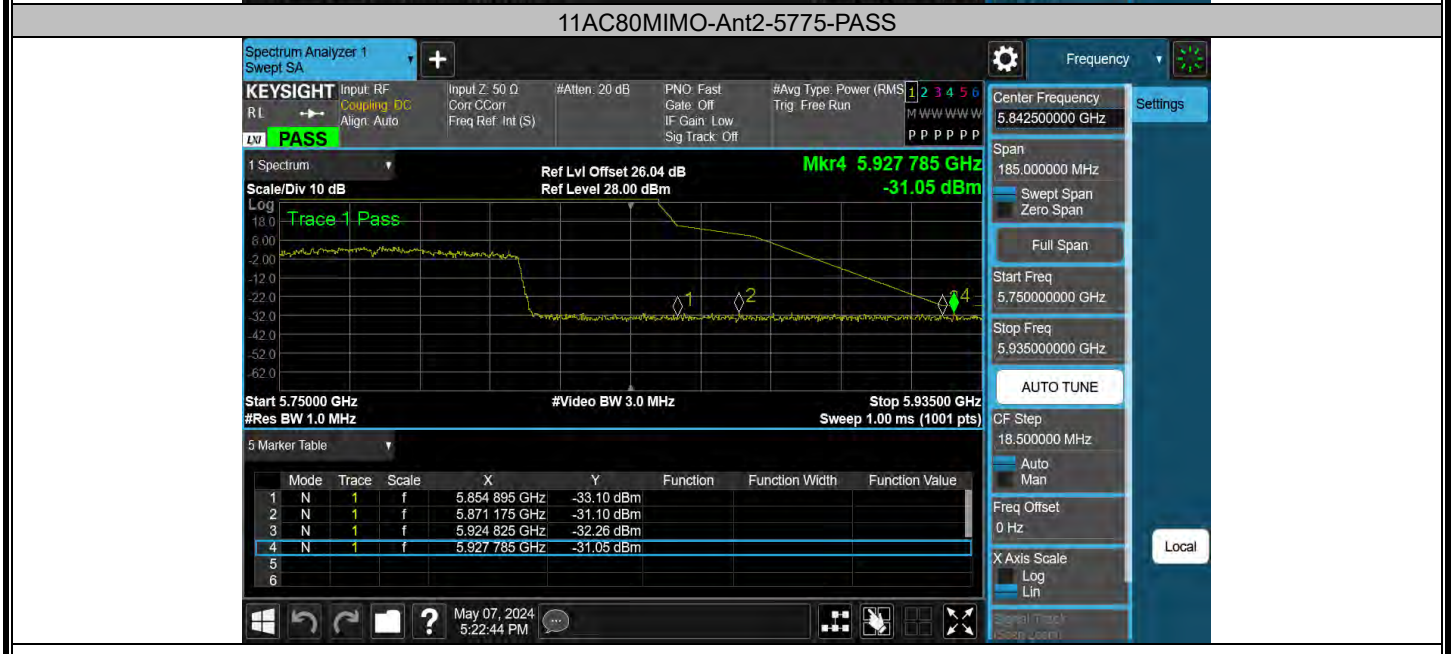
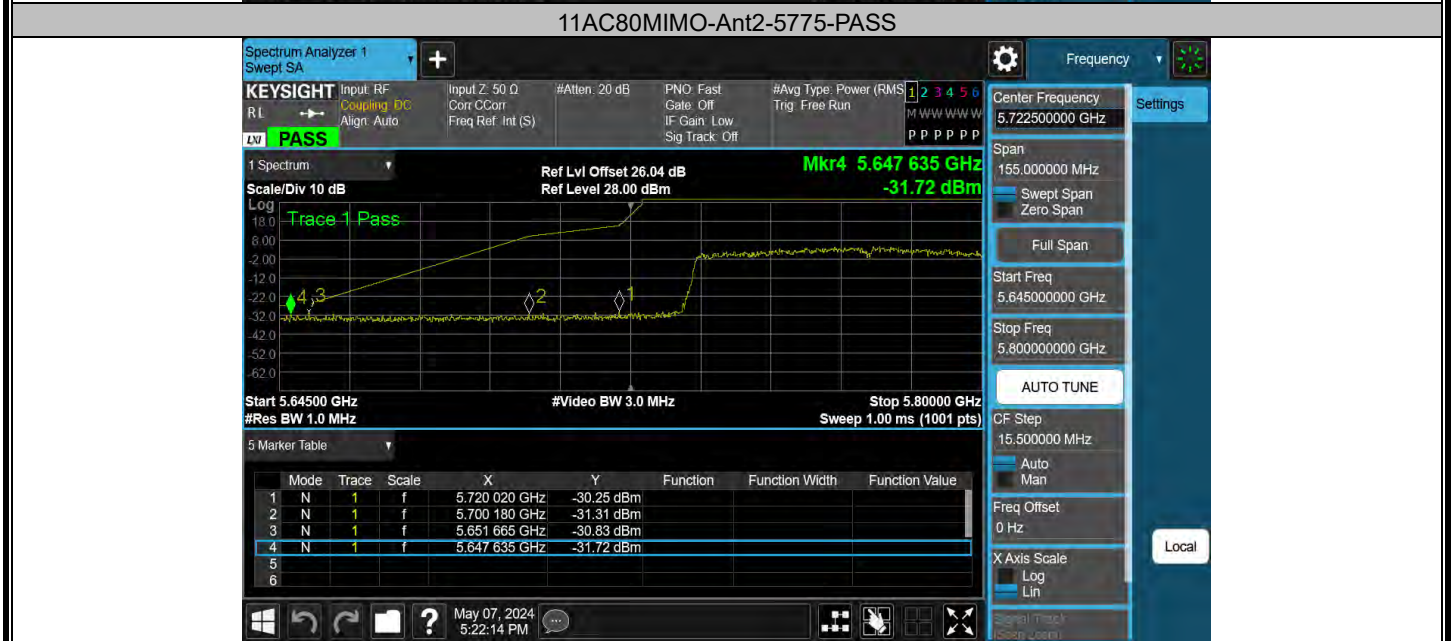
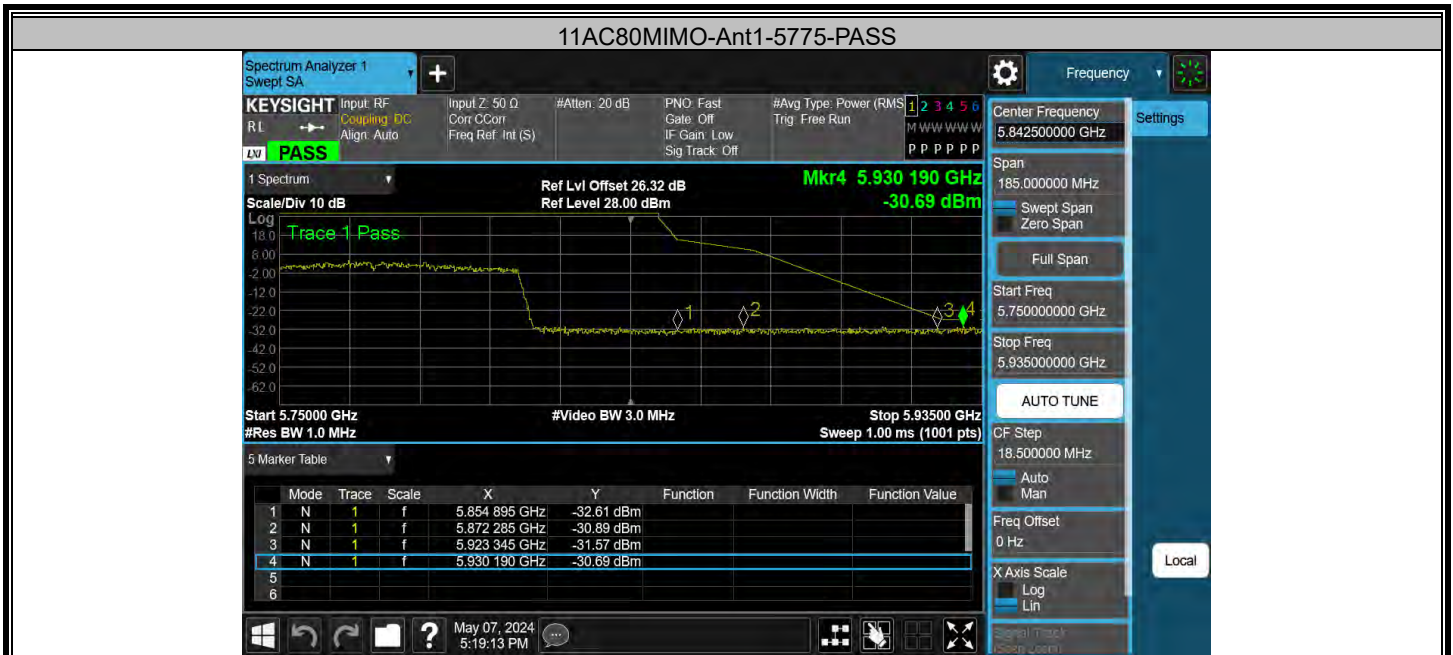












Appendix G: Frequency Stability Test Result

Test Mode	Antenna	Frequency[MHz]	Voltage [Vdc]	Temperature (°C)	Deviation (Hz)	Deviation (ppm)	Limit (ppm)	Verdict
11A	Ant1	5180	NV	NT	-20000.00	-3.861004	20	PASS
11A	Ant1	5180	LV	NT	-20000.00	-3.861004	20	PASS
11A	Ant1	5180	HV	NT	-20000.00	-3.861004	20	PASS
11A	Ant1	5260	NV	NT	-40000.00	-7.604563	20	PASS
11A	Ant1	5260	LV	NT	-20000.00	-3.802281	20	PASS
11A	Ant1	5260	HV	NT	-40000.00	-7.604563	20	PASS
11A	Ant1	5500	NV	NT	-40000.00	-7.272727	20	PASS
11A	Ant1	5500	LV	NT	-40000.00	-7.272727	20	PASS
11A	Ant1	5500	HV	NT	-40000.00	-7.272727	20	PASS
11A	Ant1	5745	NV	NT	-40000.00	-6.962576	20	PASS
11A	Ant1	5745	LV	NT	-40000.00	-6.962576	20	PASS
11A	Ant1	5745	HV	NT	-40000.00	-6.962576	20	PASS

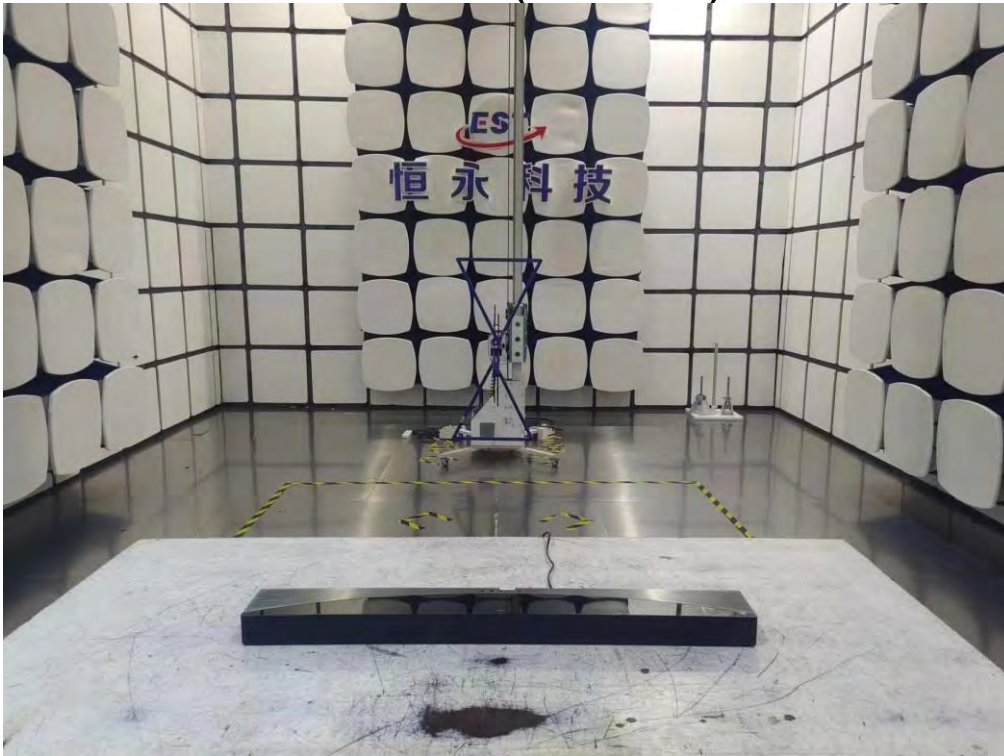
Test Mode	Antenna	Frequency[MHz]	Voltage [Vdc]	Temperature (°C)	Deviation (Hz)	Deviation (ppm)	Limit (ppm)	Verdict
11A	Ant1	5180	NV	-30	-20000.00	-3.861004	20	PASS
11A	Ant1	5180	NV	-20	-20000.00	-3.861004	20	PASS
11A	Ant1	5180	NV	-10	-40000.00	-7.722008	20	PASS
11A	Ant1	5180	NV	0	-20000.00	-3.861004	20	PASS
11A	Ant1	5180	NV	10	-40000.00	-7.722008	20	PASS
11A	Ant1	5180	NV	20	-40000.00	-7.722008	20	PASS
11A	Ant1	5180	NV	30	-20000.00	-3.861004	20	PASS
11A	Ant1	5180	NV	40	-20000.00	-3.861004	20	PASS
11A	Ant1	5180	NV	50	-40000.00	-7.722008	20	PASS
11A	Ant1	5260	NV	-30	-40000.00	-7.604563	20	PASS
11A	Ant1	5260	NV	-20	-40000.00	-7.604563	20	PASS
11A	Ant1	5260	NV	-10	-40000.00	-7.604563	20	PASS
11A	Ant1	5260	NV	0	-60000.00	-11.406844	20	PASS
11A	Ant1	5260	NV	10	-40000.00	-7.604563	20	PASS
11A	Ant1	5260	NV	20	-40000.00	-7.604563	20	PASS
11A	Ant1	5260	NV	30	-60000.00	-11.406844	20	PASS
11A	Ant1	5260	NV	40	-40000.00	-7.604563	20	PASS
11A	Ant1	5260	NV	50	-40000.00	-7.604563	20	PASS
11A	Ant1	5500	NV	-30	-40000.00	-7.272727	20	PASS
11A	Ant1	5500	NV	-20	-40000.00	-7.272727	20	PASS
11A	Ant1	5500	NV	-10	-20000.00	-3.636364	20	PASS
11A	Ant1	5500	NV	0	-40000.00	-7.272727	20	PASS
11A	Ant1	5500	NV	10	-40000.00	-7.272727	20	PASS
11A	Ant1	5500	NV	20	-40000.00	-7.272727	20	PASS
11A	Ant1	5500	NV	30	-40000.00	-7.272727	20	PASS
11A	Ant1	5500	NV	40	-40000.00	-7.272727	20	PASS
11A	Ant1	5500	NV	50	-40000.00	-7.272727	20	PASS
11A	Ant1	5745	NV	-30	-40000.00	-6.962576	20	PASS
11A	Ant1	5745	NV	-20	-40000.00	-6.962576	20	PASS
11A	Ant1	5745	NV	-10	-40000.00	-6.962576	20	PASS
11A	Ant1	5745	NV	0	-60000.00	-10.443864	20	PASS
11A	Ant1	5745	NV	10	-40000.00	-6.962576	20	PASS
11A	Ant1	5745	NV	20	-40000.00	-6.962576	20	PASS
11A	Ant1	5745	NV	30	-40000.00	-6.962576	20	PASS
11A	Ant1	5745	NV	40	-40000.00	-6.962576	20	PASS
11A	Ant1	5745	NV	50	-40000.00	-6.962576	20	PASS

11. TEST SETUP PHOTO

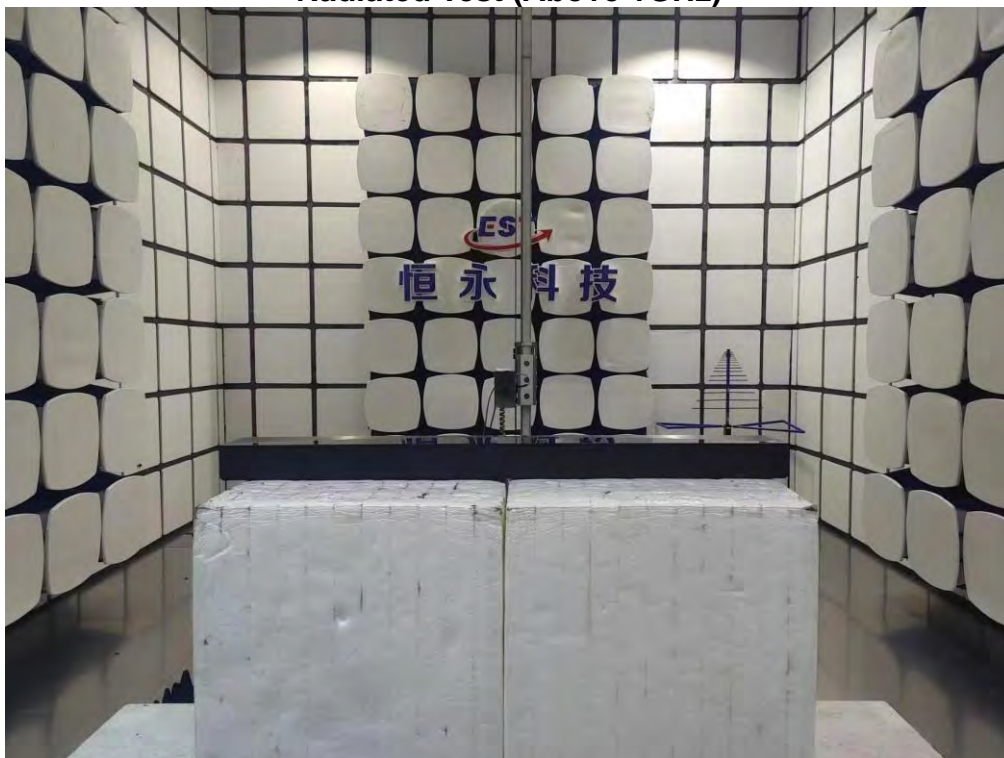
Conducted Test



Radiated Test (Below 1GHz)

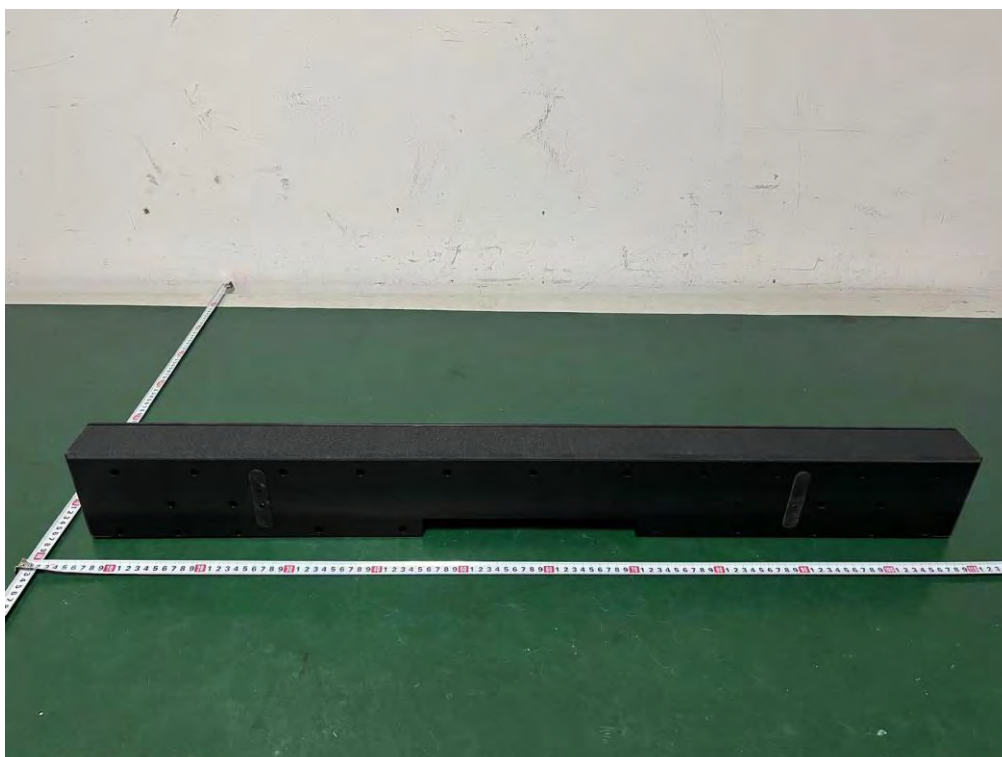


Radiated Test (Above 1GHz)



12. EUT PHOTO

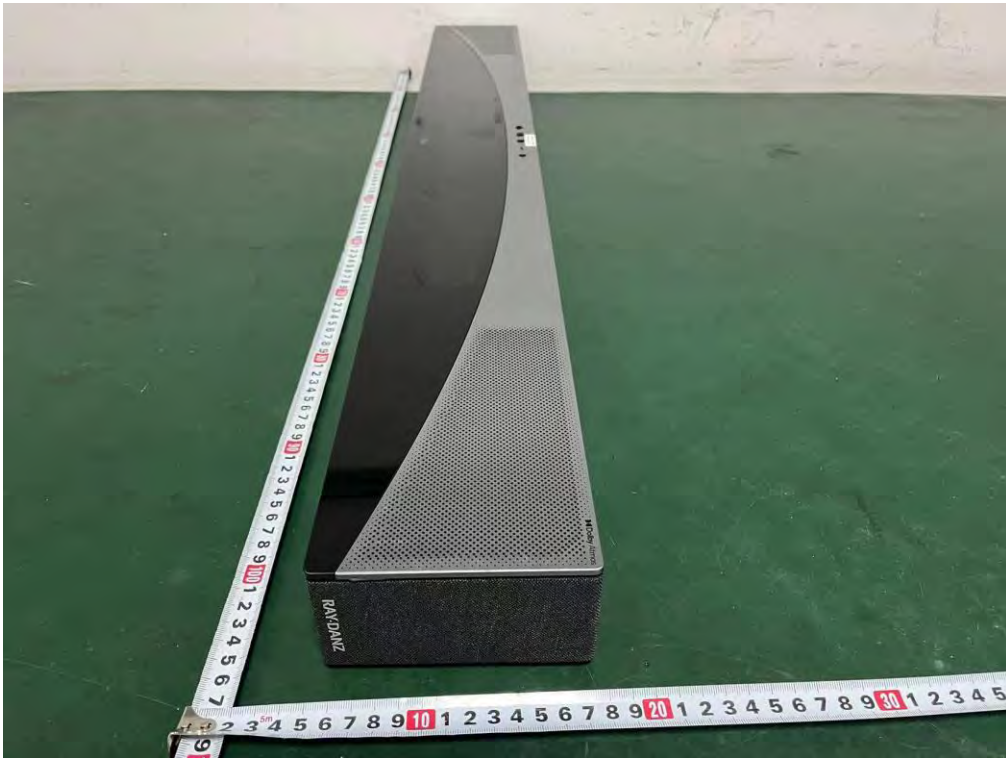
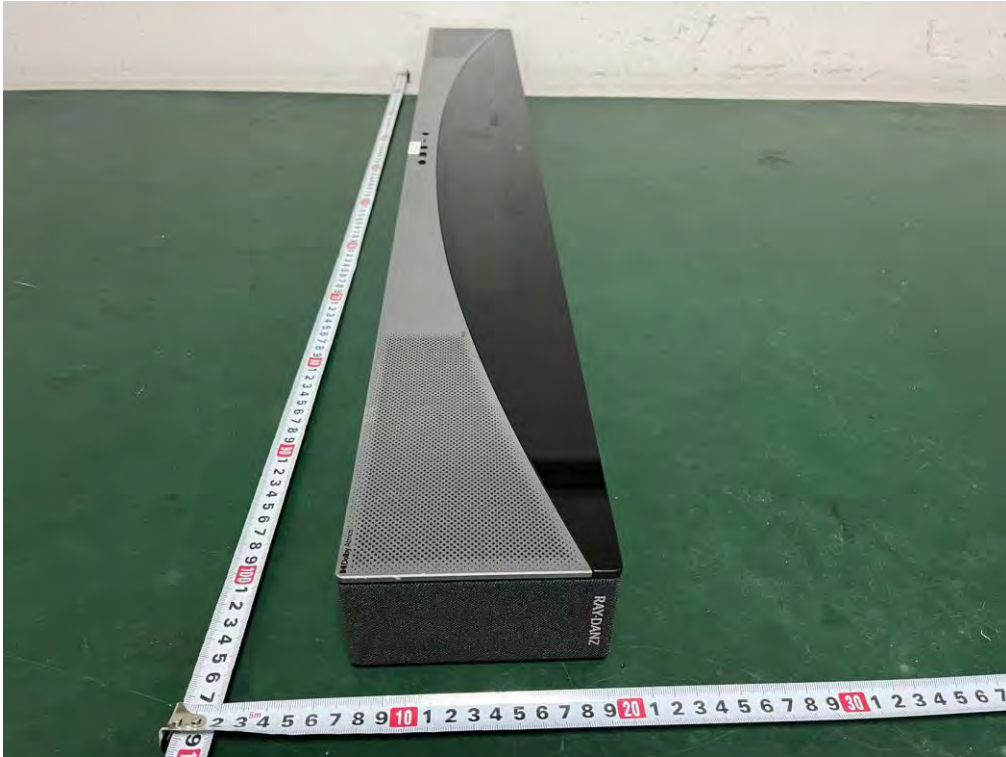
External Photos
M/N: Q75H



External Photos
M/N: Q75H

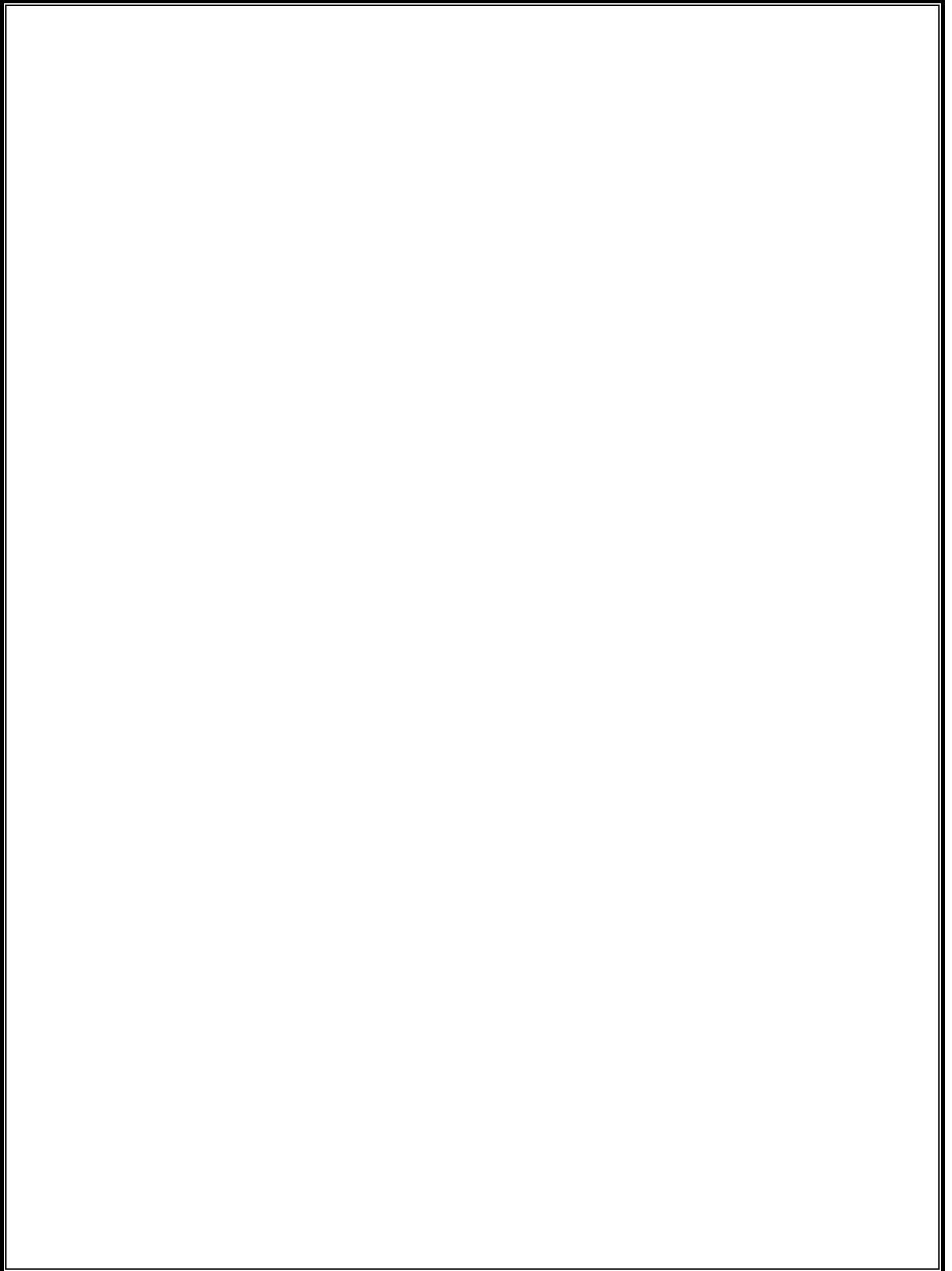


External Photos
M/N: Q75H



External Photos M/N: Q75H

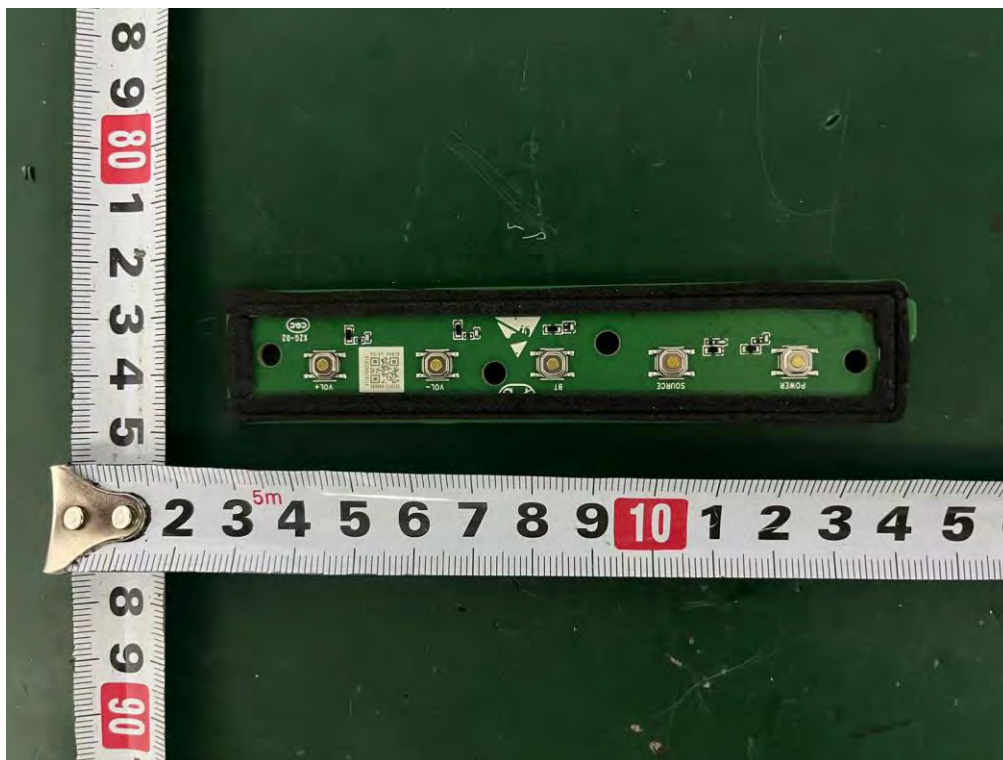




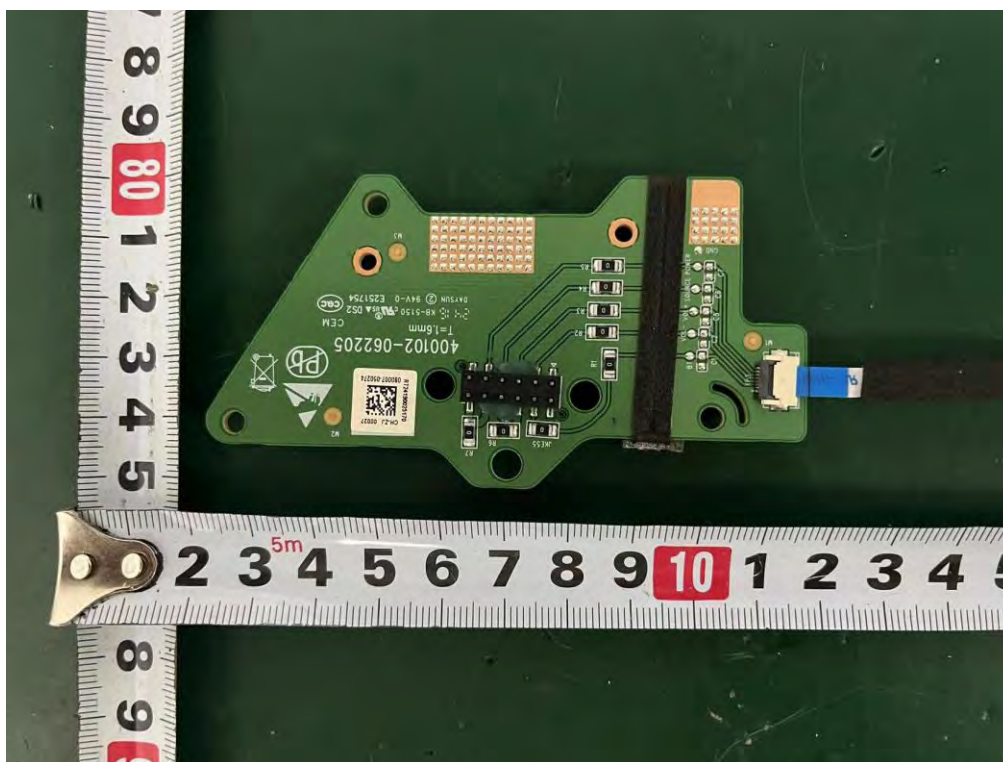
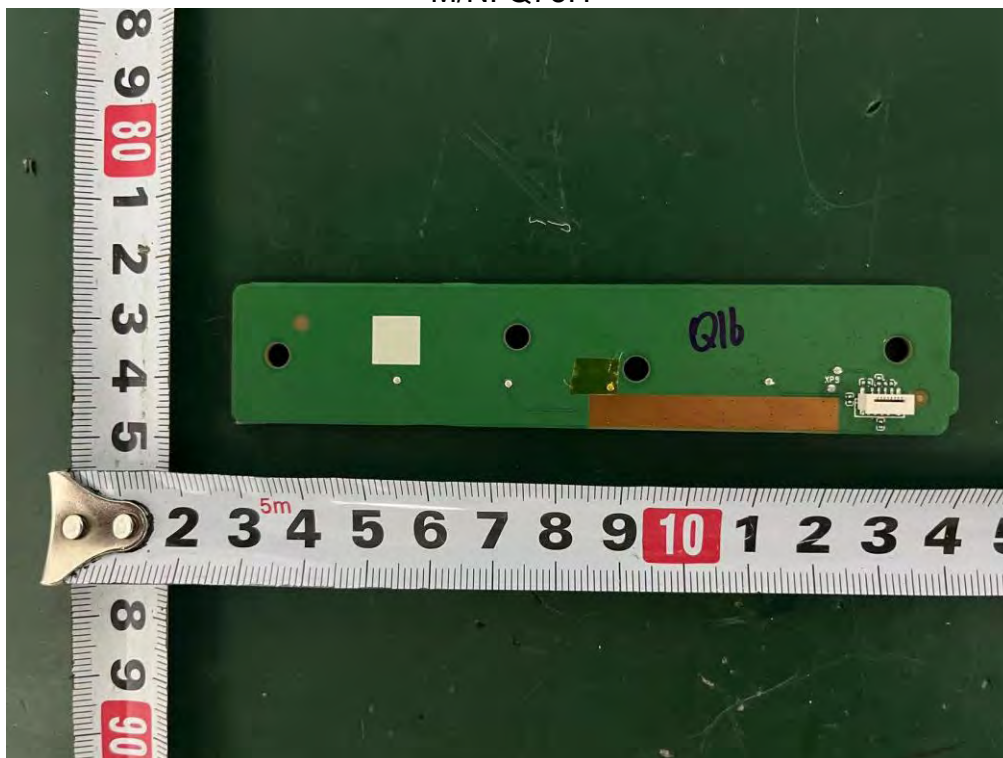
Internal Photos M/N: Q75H



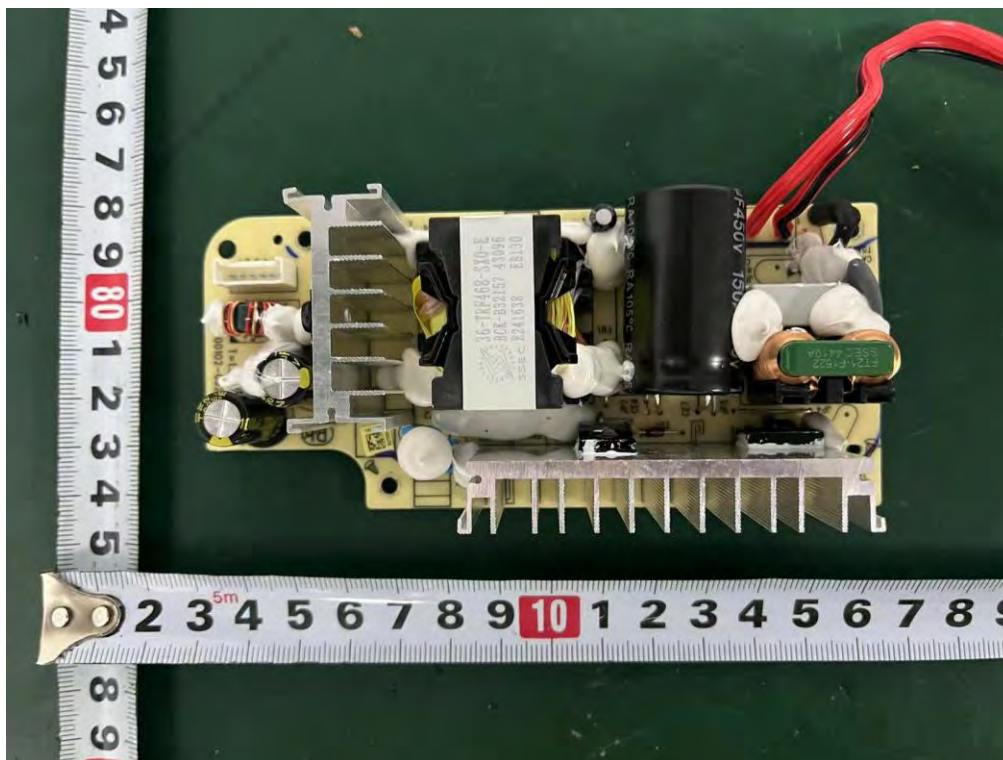
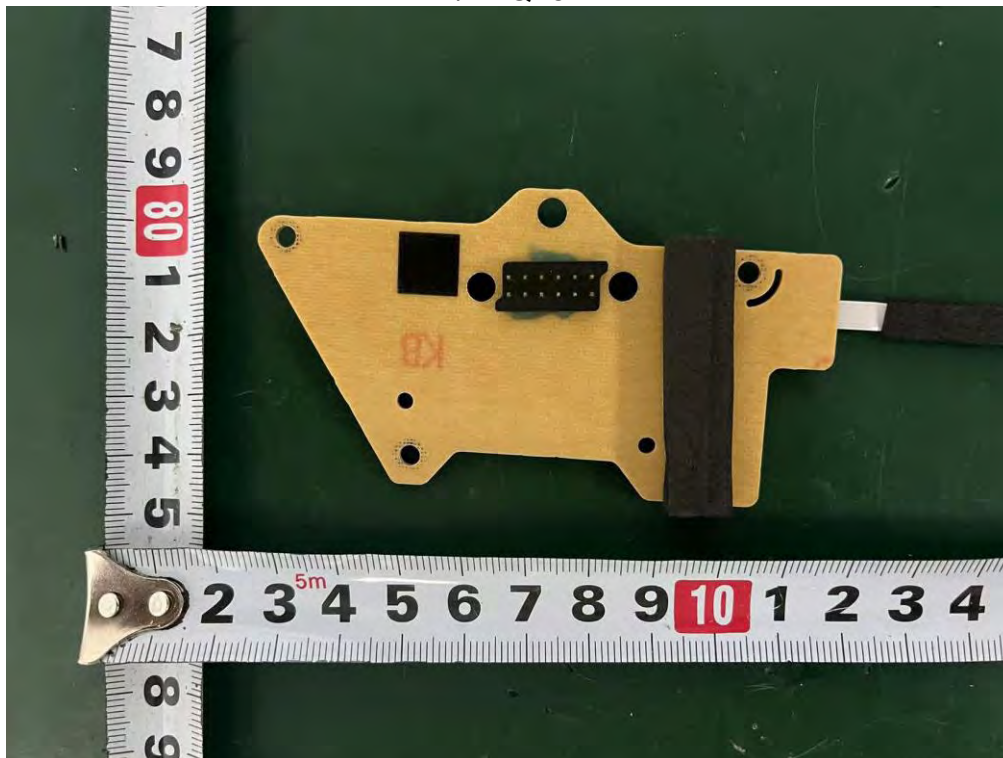
Internal Photos
M/N: Q75H



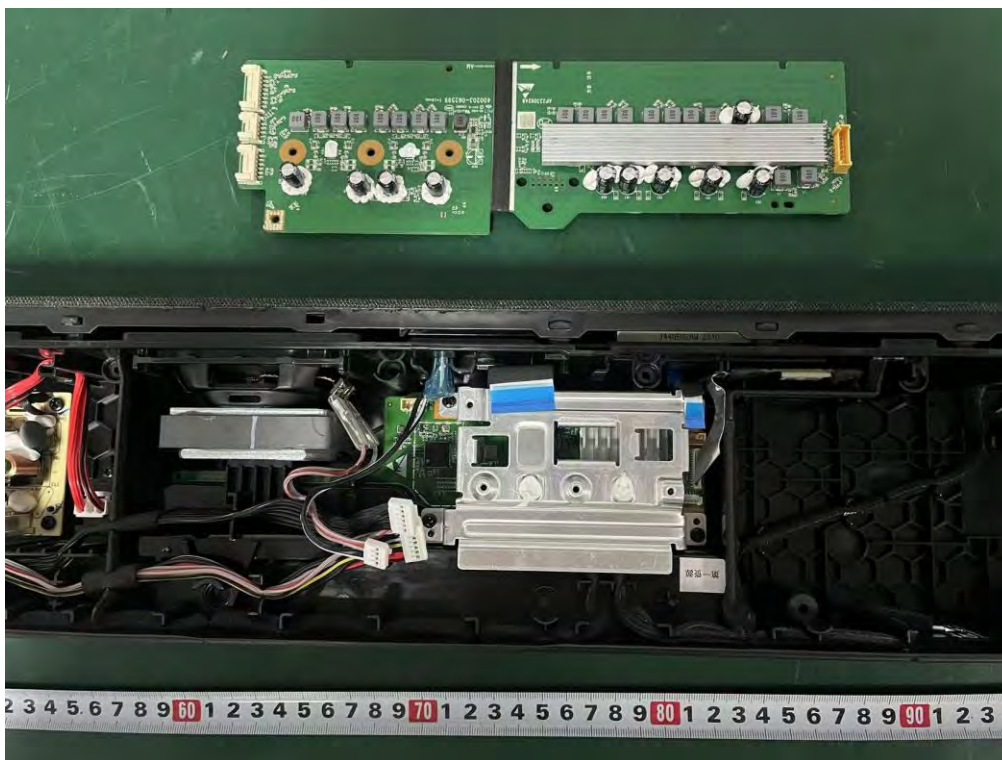
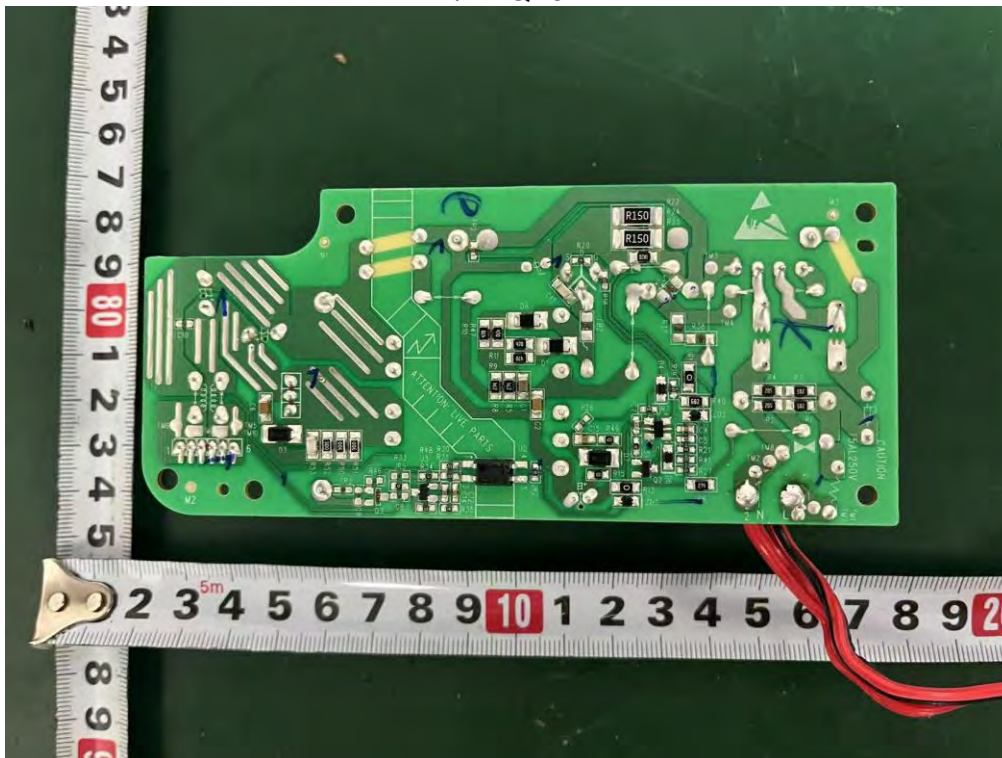
Internal Photos M/N: Q75H



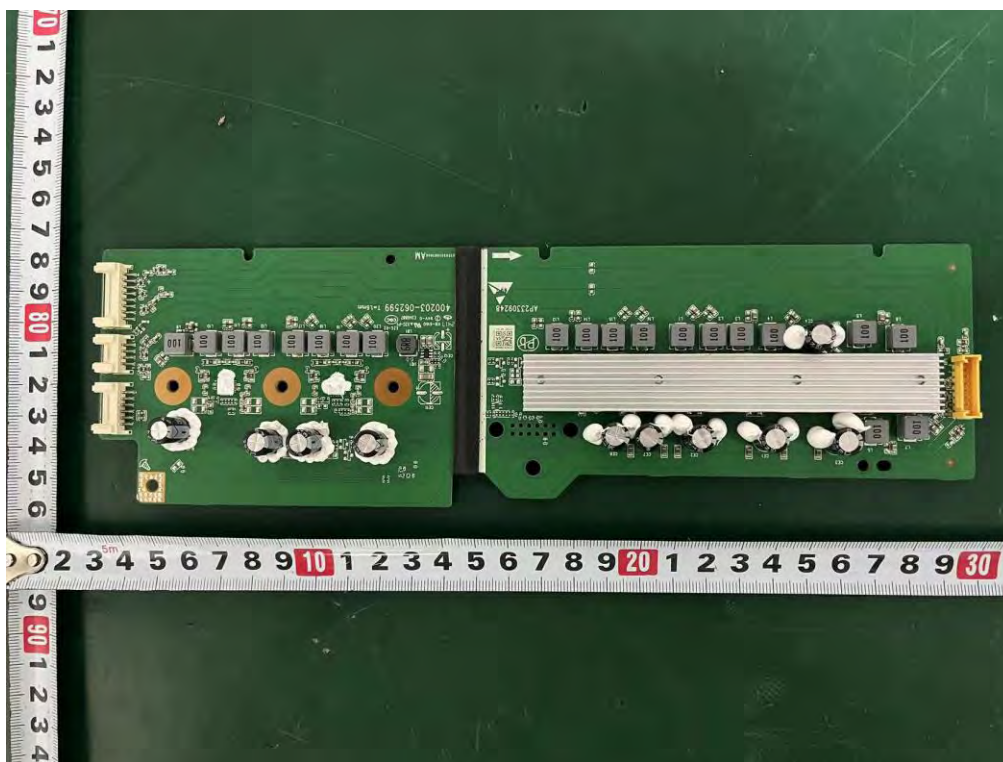
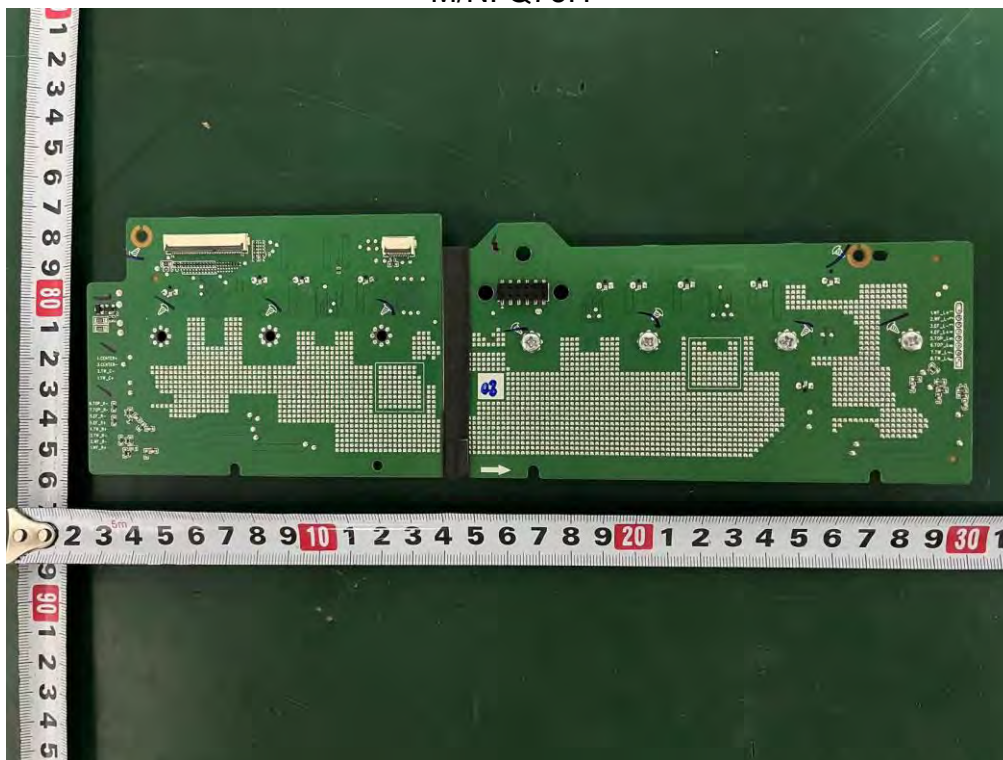
Internal Photos
M/N: Q75H



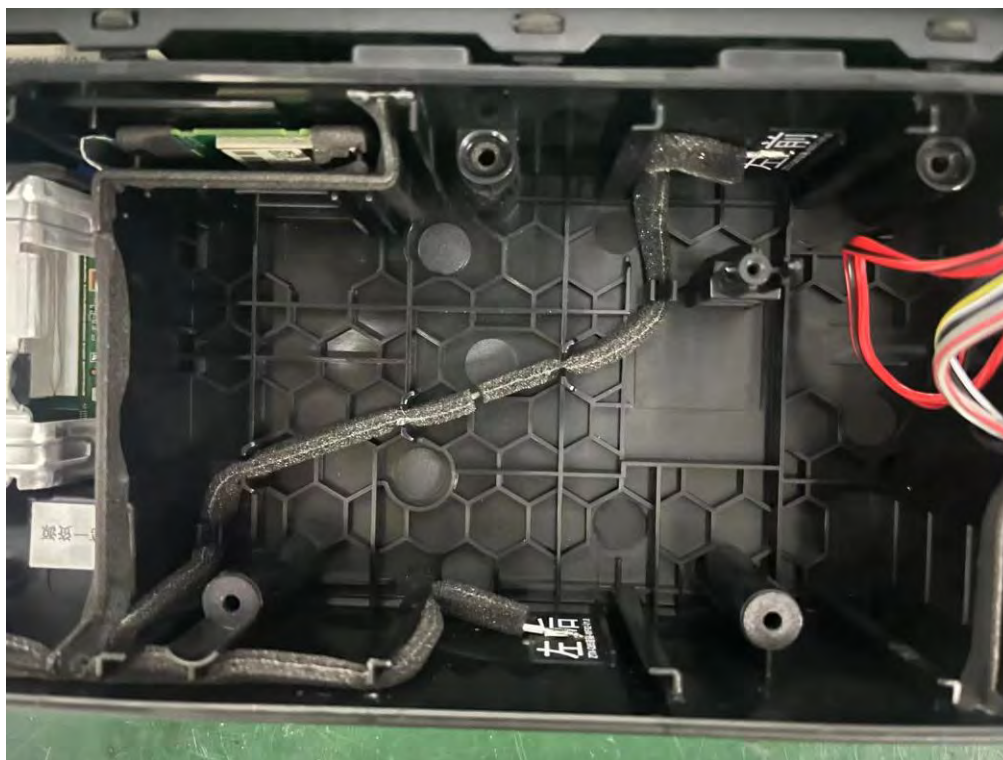
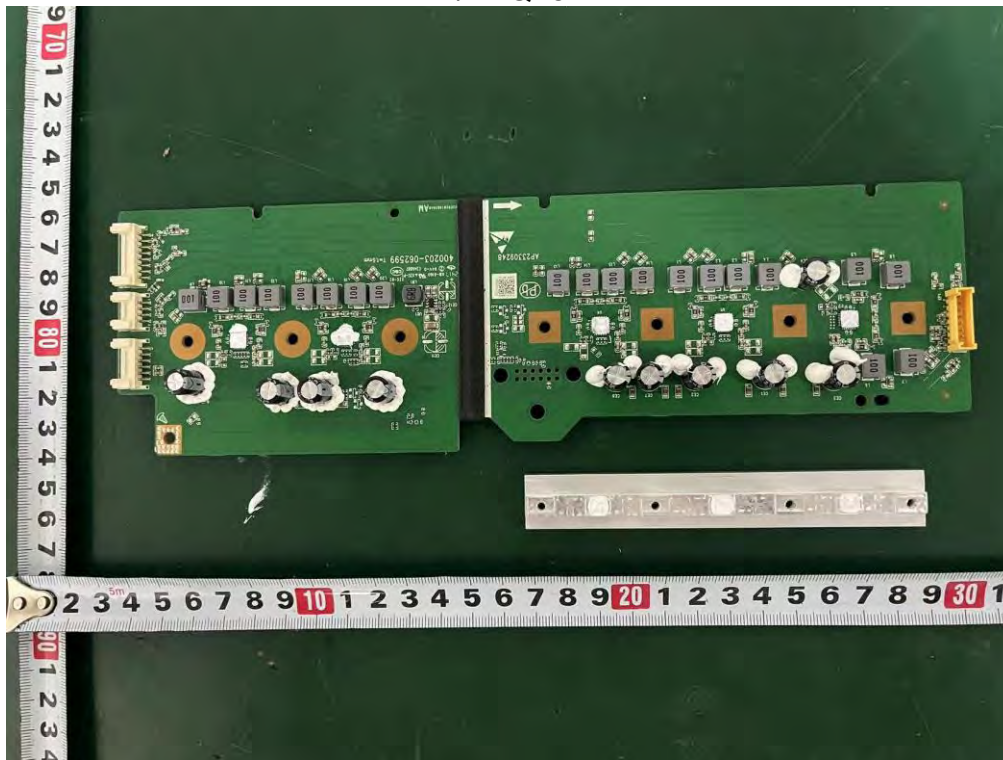
Internal Photos M/N: Q75H



Internal Photos M/N: Q75H

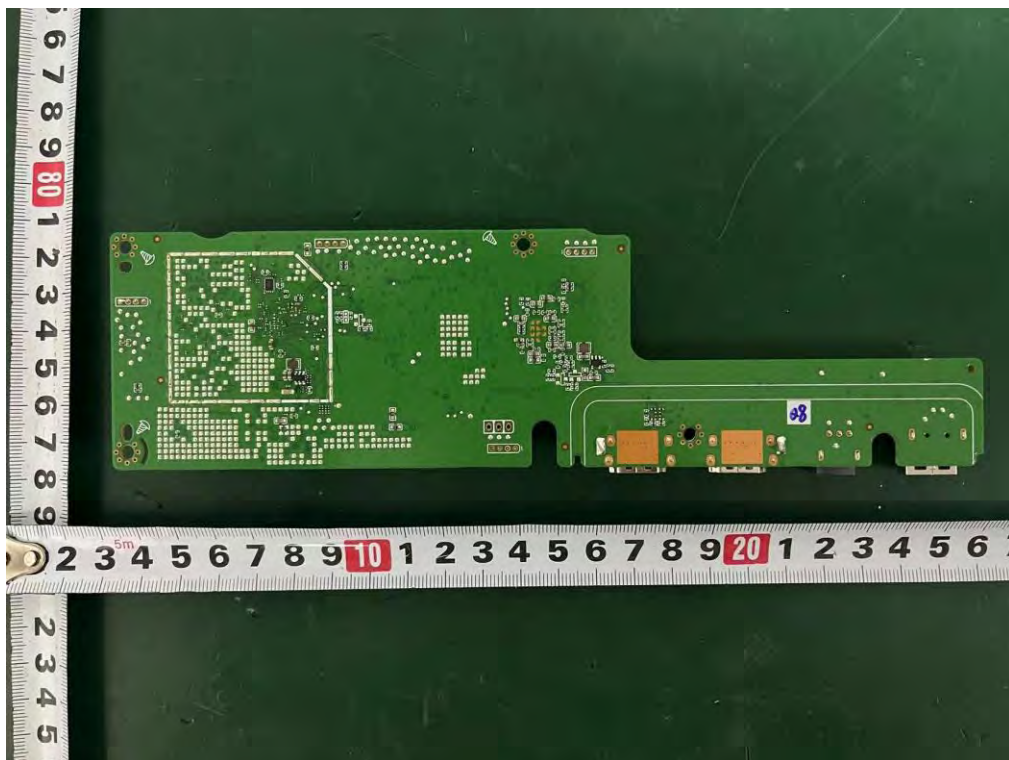


Internal Photos M/N: Q75H



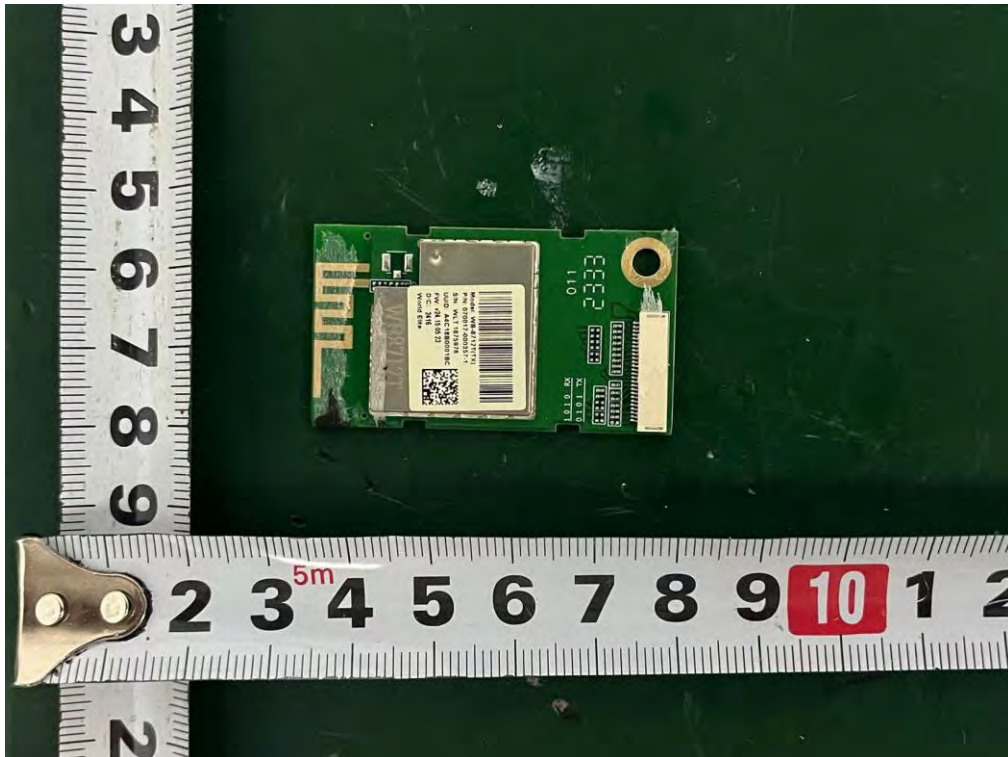
Internal Photos

M/N: Q75H

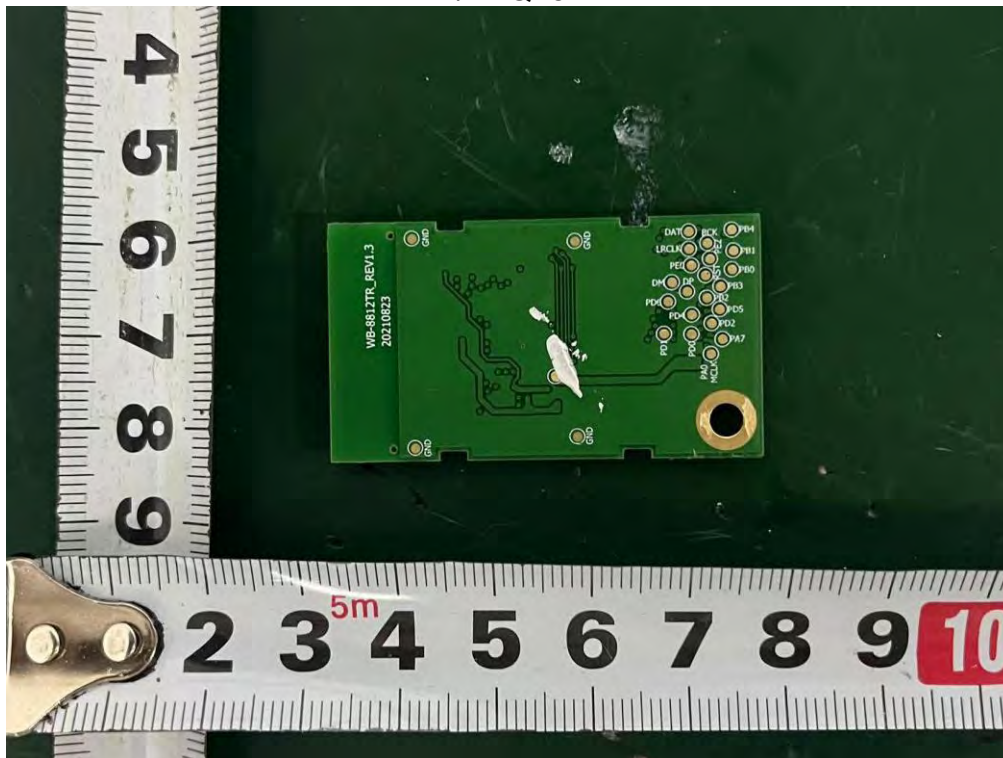


Internal Photos

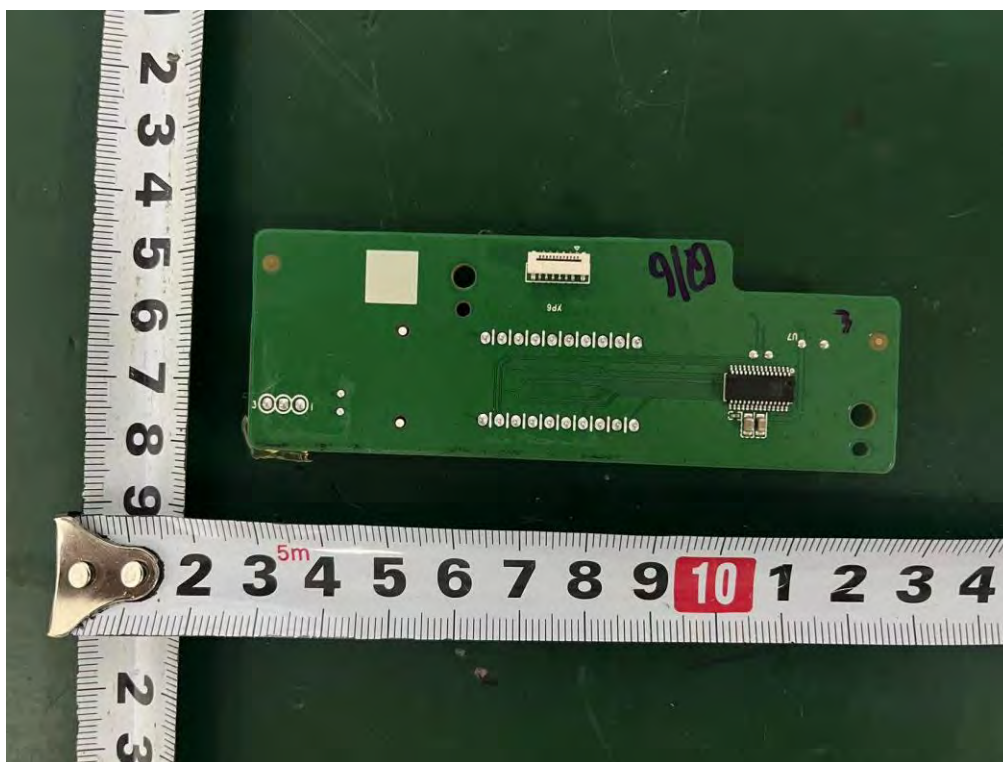
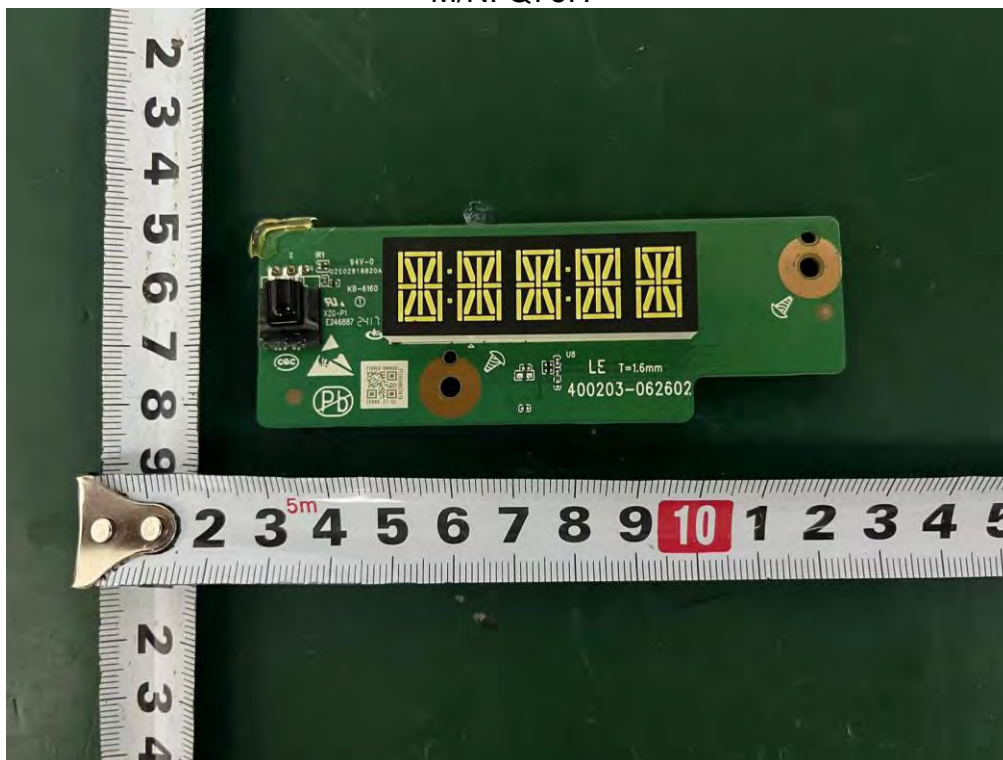
M/N: Q75H



Internal Photos
M/N: Q75H



Internal Photos M/N: Q75H



Internal Photos
M/N: Q75H

