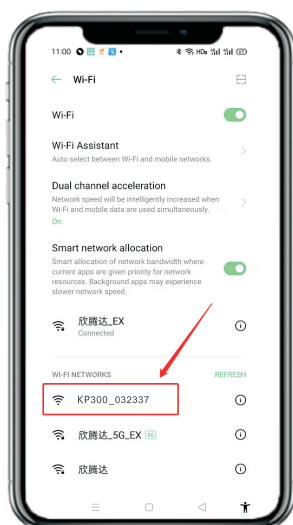


## REPEATER MODE

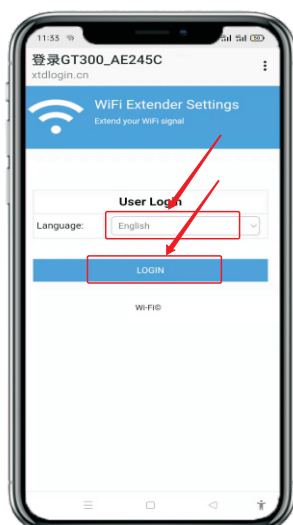
1.Plugging wifi repeater in the socket directly ,research the "KP300\*\*\*\*" in your cellphone Setting WLAN .Then click it.

Step 1



2. Select the language "English", then click "LOGIN".

Step 2



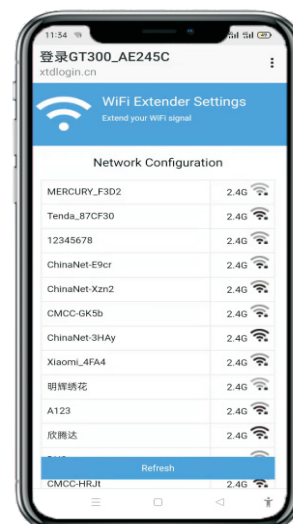
3. Select the "Repeater Mode", Please input "192.168.18.1" in your browser if it cannot automatic open the page for a few model phone.

Step 3



4. Selecting your stronger router wifi signal. Please click "Refresh" if the page cannot be displayed.

Step 4



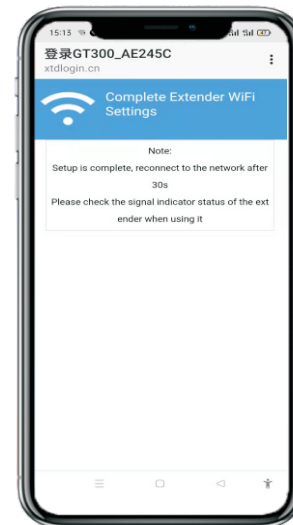
5. Input the password of your extend router wifi. (The password is your original wifi password )

Step 5



6. Then click "NEXT" and "Finish Setting", you will get a new wifi named "\*\*\*\*-plus\*\*\*", Finally you can use this new wifi in the future.

Step 6

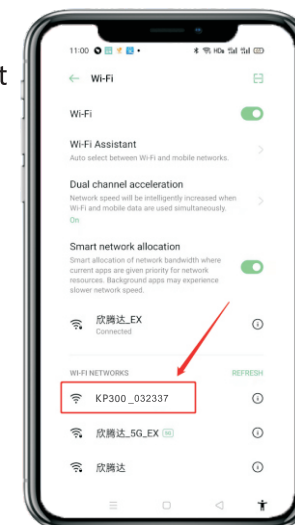


正

## AP MODE

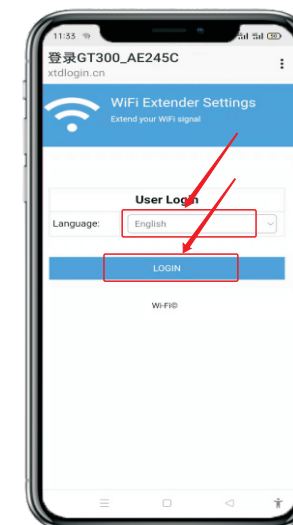
1.Plugging wifi repeater in the socket directly ( Donot connect with cable ), research the "KP300\*\*\*\*" in your cellphone Setting WLAN .Then click it.

Step 1



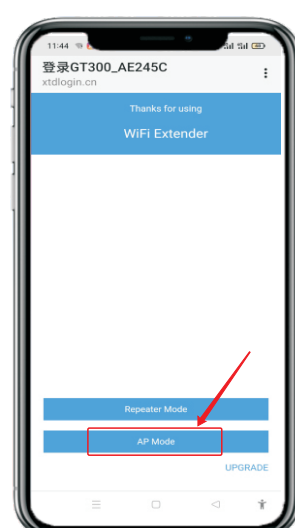
2. Select the language "English", then click "LOGIN".

Step 2



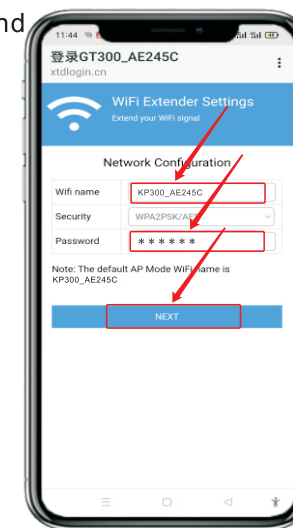
3. Select the "AP Mode", Please input "192.168.18.1" in your browser if it cannot automatic open the page for a few model phone.

Step 3



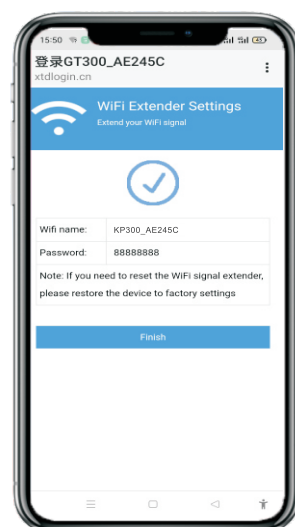
4. You can change and set a new wifi name and password in the page.

Step 4



5. Click "NEXT" and "Finish", then you can connect to router and wifi repeater's wlan with a cable. Finally all devices can use the wifi signal .

Step 5



## FAQ(Frequently Asked Questions)

**Q1.What should I do if I cannot access the Repeater's web management page?**

- A1: Make sure your computer is connected to the extended network.
- A2: Make sure your computer is set to obtain an IP address automatically.
- A3: If the Repeater has connected to the router, you should go to your router's DHCP client list to obtain the Repeater's current IP address.
- A4: Reset the Repeater

**Q2.Why does the wireless transmission rate speed down, while the wireless signal is stronger after repeated by the Repeater?**

A1:In compliance with the wireless transmission protocol,all the Repeater devices are set to work in half-duplex instead of full-duplex mode. In other words, the Repeater has to process one-way communication between your root Wireless router (or AP) and the terminal clients; so the transmission time will be double-increased, while the speed will be decreased. Recommends that you connect to the extender when your home network connection is poor, or when you want a larger wireless coverage to eliminate "dead zones".

**Q3.Why the devices connected to the Repeater cannot get an IP address from the Repeater and cannot access the Internet.**

- A1: Maybe you enabled wireless MAC filter, wireless access control, or access control list (ACL) on your router.To solve this problem, please log into your router and disable the MAC filter, wireless access control or ACL.
- A2: Maybe the Repeater has not been successfully connected to your router, please reset the Repeater and Reconfiguration.
- A3: Maybe the IP address of the router is occupied or the wireless device connected by the router has reached the limit. please reboot your router, then reset the Repeater and Reconfiguration.

反

FCC Warning:

This equipment has been tested and found to comply with the limits for a Class B digital device, pursuant to part 15 of the FCC Rules. These limits are designed to provide reasonable protection against harmful interference in a residential installation. This equipment generates, uses and can radiate radio frequency energy and, if not installed and used in accordance with the instructions, may cause harmful interference to radio communications. However, there is no guarantee that interference will not occur in a particular installation. If this equipment does cause harmful interference to radio or television reception, which can be determined by turning the equipment off and on, the user is encouraged to try to correct the interference by one or more of the following measures:

- Reorient or relocate the receiving antenna.
- Increase the separation between the equipment and receiver.
- Connect the equipment into an outlet on a circuit different from that to which the receiver is connected.
- Consult the dealer or an experienced radio/TV technician for help.

Caution: Any changes or modifications to this device not explicitly approved by manufacturer could void your authority to operate this equipment.

This device complies with part 15 of the FCC Rules. Operation is subject to the following two conditions:

(1) This device may not cause harmful interference, and (2) this device must accept any interference received, including interference that may cause undesired operation.

This equipment complies with FCC radiation exposure limits set forth for an uncontrolled environment. This equipment should be installed and operated with minimum distance 20cm between the radiator and your body.