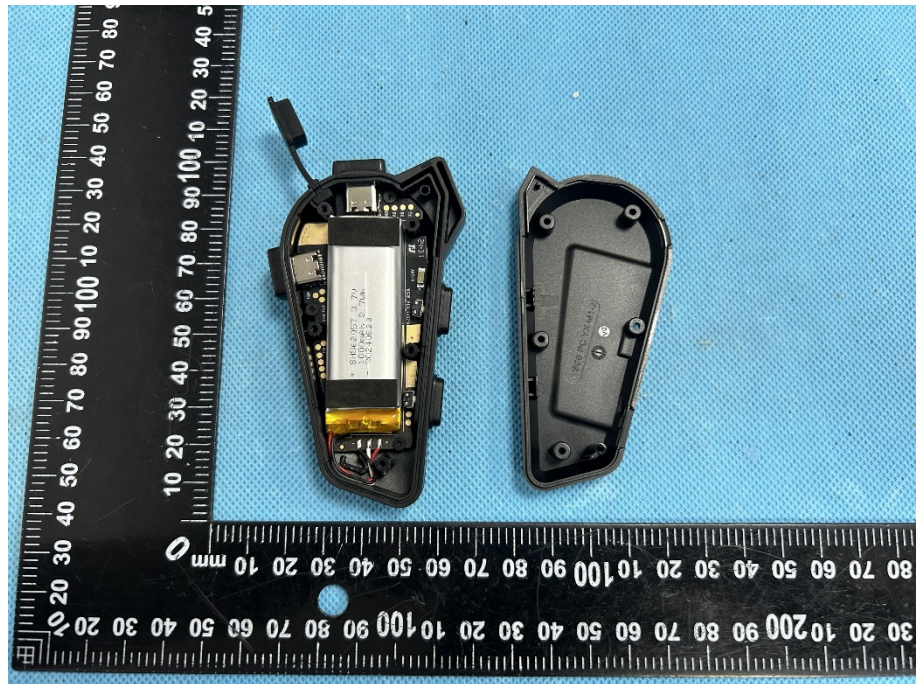
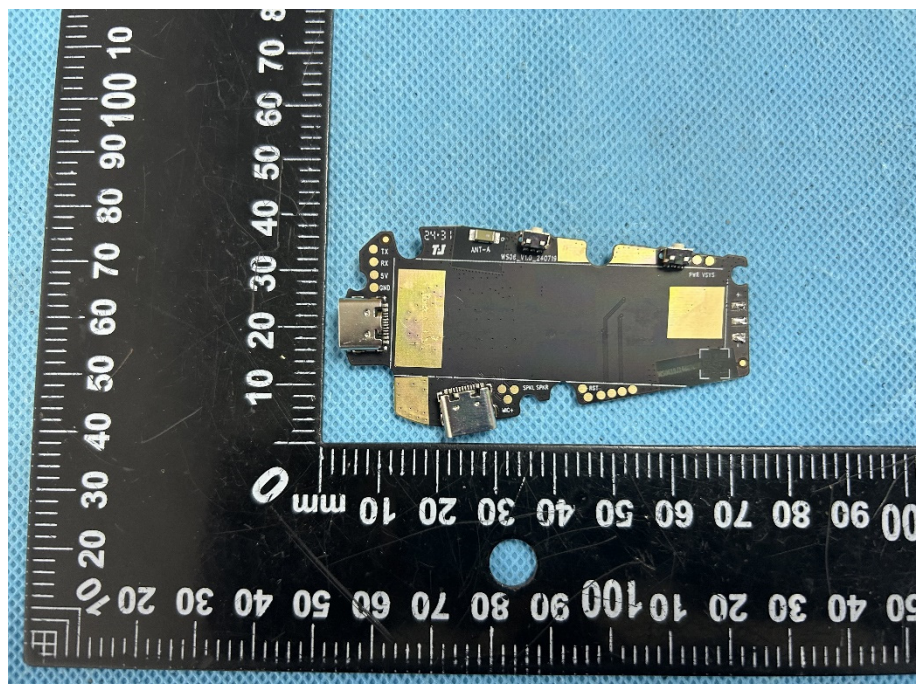


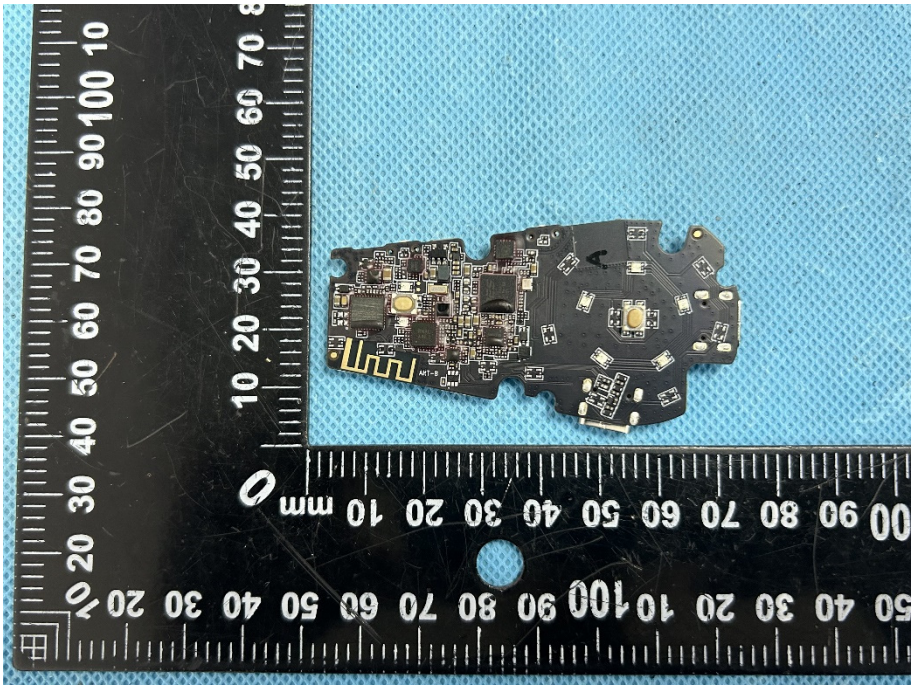
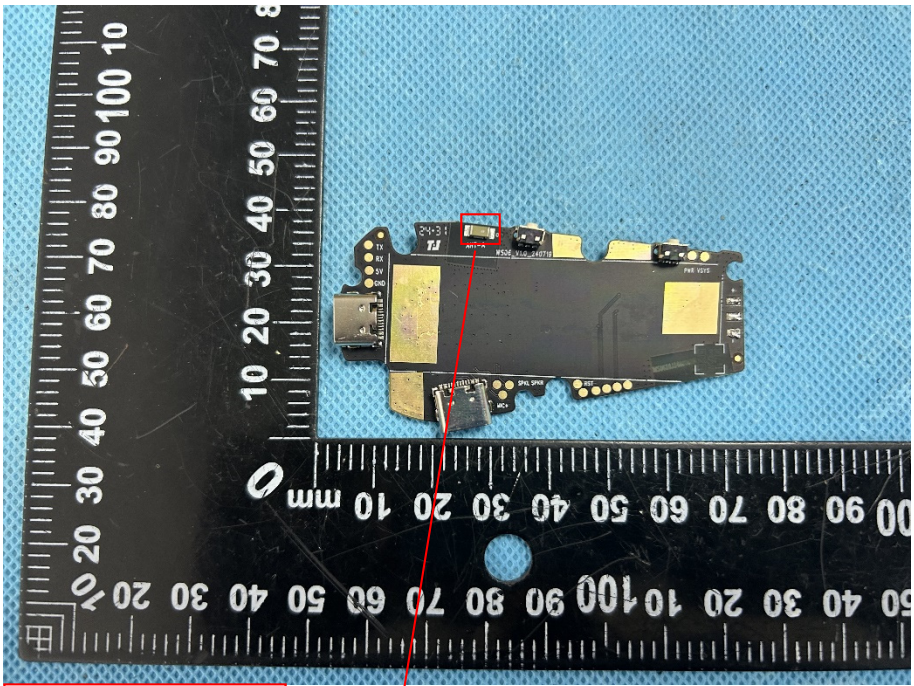
EXHIBIT 3 - EUT INTERNAL PHOTOGRAPHS

EUT Housing and Board View 1



Solder Board-Component View 1



<p>Solder Board-Component View 2</p>	 <p>A photograph of a small, irregularly shaped printed circuit board (PCB) component. The board is dark green and populated with various electronic components, including integrated circuits, capacitors, and resistors. It is placed on a blue textured surface next to a black ruler with white markings. The ruler shows measurements in millimeters, with the component's length being approximately 60 mm and its width around 30 mm.</p>
<p>Antenna View</p>	 <p>A photograph of the same PCB component from a different perspective, focusing on the antenna area. The board is oriented horizontally. A red rectangular box highlights a small component on the board, which is identified as the BT Ant. (Bluetooth Antenna). A red line extends from this box to a label 'BT Ant.' located in a white box at the bottom of the image. The ruler and blue background are also visible.</p>