

TWS earphones

instructions

Specification of Earbuds

- ① Product Name: M10
- ② Wireless version : V5.1
- ③ Protocol: Supports HFP 1.7, HSP 1.2, AVRCP 1.6, SPP 1.2 and PBAP 1.0
- ④ Speaker Diameter : 8mm
- ⑤ Working distance: 10m-20m
- ⑥ Call Time: 5-6H (1 time full charged)
- ⑦ Play Music Time: 5-6H (1 time full charged)
- ⑧ Standby time:650H (With charger case)
- ⑨ Frequency:2402MHz~2480MHz
- ⑩ Battery type: 3.7V, >50mA Li Battery
- ⑪ Charging Time: 1-2H
- ⑫ Working Temperature: -10°-55°

Specification of charger case:

- ① Input current: 5V==1A
- ② Output current: 5V==1A
- ③ Battery type: 3.7V
- ④ Charging time:1-2H

How to operate the earbuds:

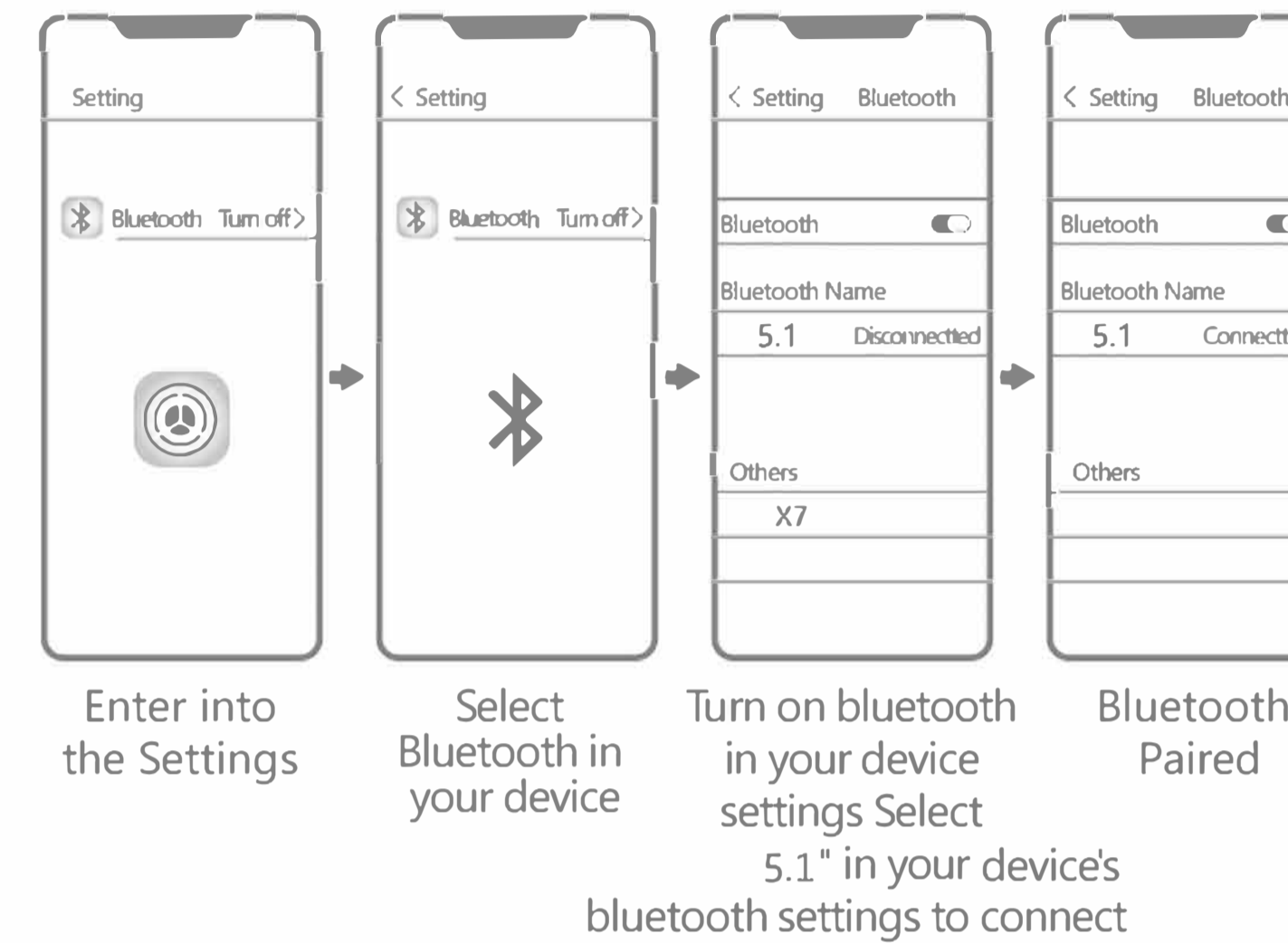
- ① Make sure that the charging case has electricity. If the charging compartment is out of power, please fully charge the

charging compartment;(Pick up the two earbuds and put them back on the cover. The charging compartment indicator lights up to indicate that there is power. If it does not light, it means no power.)

② Take the two earbuds out of the charging case and wear them on the left and right ears respectively. The earphones will automatically turn on and automatically pair;(Voice prompt: power on, left channel, right channel, waiting for connection).

③ Turn on the phone Bluetooth and click on the connection pair name " 5.1 " to connect (voice prompt "Connected").

How to pairing



Warming remain

For the first time to use the earbuds or for a long time to no use, please charge the charging case and earphones before, Please keep it in an unobstructed and effective environment within 10 meters. Otherwise, it may be stuck and disconnected.

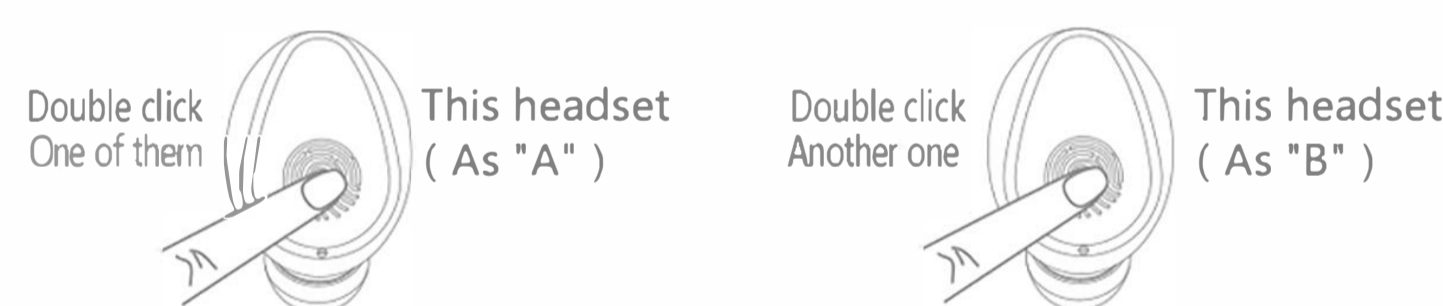
Indicator description:

- ① Charge the earbuds: Put the earbuds into the charging case and cover it to charge. earbuds indicator: Lights up red when charging, and red light when fully charged. The charging case flashes green and the light is off after charging.
- ② Charge the charging case: Plug the 5V/1A USB into the charging port to charge. During charging, the middle digit of the charging stand display indicates the charging case power. When the number is displayed as "100", the battery is fully charged. Charging case indicator light: The charging flashes green light, and the light is off after charging.
- ③ Charge to the mobile phone; 3 Charge the mobile phone: Connect USB Cable to USB port of case to charge the mobile phone. ChargingCase indicator light : Light will turn green when charging and turn off when fully charged

In master-slave synchronous binaural mode, double-click on one of the headphones is the previous song, and double-click the other headset is the next song!

NEXT Songs

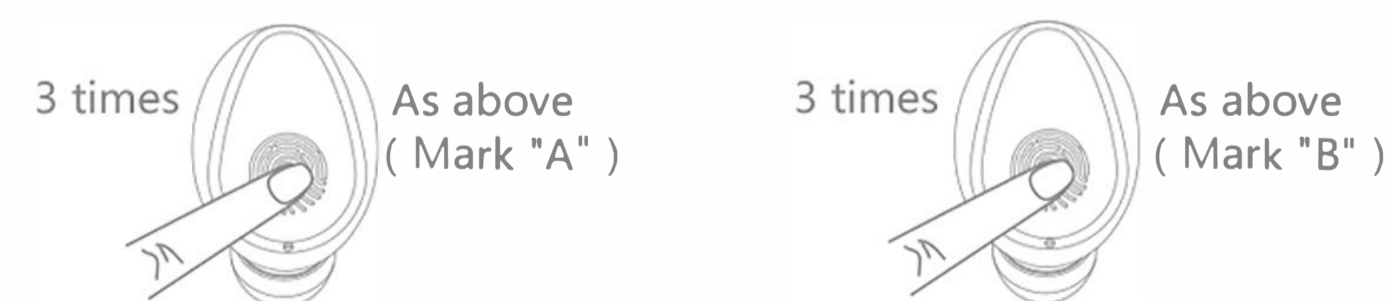
PREV Songs



The functions of volume + / - are as follows: quickly triple tap "a" for volume +, and triple click "B" for volume-

Volume+

Volume-



Single Earbud Mode

Reminder: For the first use, please put the 2 earphones in the charging bay and activate for a few seconds, so that the earphones will automatically turn on when you pick them up, and the automatic binaural teaming will be successful. Then turn on the Bluetooth function of the mobile phone to search for signals. After finding the signal, click to connect. After the connection is successful, if you want to use it with one ear, you can put one of them in the charging bay without switching the signal connection. The earphone is not divided into the main and auxiliary ears, and the two ears are seamlessly docked, which is very easy to use.

Headset signal name

"L" Headset signal name: 5.1
"R" Headset signal name: 5.1

Notice:If you find that 2 earphones cannot listen to music at the same time, please check if there are 2 identical signals in the Bluetooth management of the mobile phone. If so, please delete the 2 signals and turn off the Bluetooth function of the mobile phone, and then put the earphones in the charging compartment. Pick it up, the headset will automatically turn on and automatically team up, wait until one of the lights is off, search for the signal after turning on the Bluetooth function of the mobile phone, if it is a signal, just connect it directly!

Special Note:The two earbuds are well paired before packaged, but if they can not paired well due to some wrong operations, pls. do as following steps to re-pair the earbuds. Power off the two earbuds, then press the button of the two earbuds at same time and do not release for about 10s, blue lights sparkled ----> red and blue lights sparkled alternatively ----> release ----> two earbuds are in the situation of paired, and they are ready for phone searching.

Note: This operation also clears the team record between the phone and the earbuds, so you need to delete the Bluetooth pairing record before the phone and then search for the connection again.

Care and maintenance:

- ① To avoid any mis-operation caused by collision put the earbud in charging case before put in your pocket
- ② Do not use a abrasive cleaner to clean the Bluetooth earbuds.
- ③ Do not expose the Bluetooth earbuds to excessive temperature.
- ④ Do not expose the earbud under the blazing sun for a long time

- ⑤ Do not let the Bluetooth earbuds be close to the fire source.
- ⑥ Do not drop, bump, scratch, twist, tap, crush, or put into the water.
- ⑦ Keep away from magnets, appliances and speakers when using Bluetooth earbuds.
- ⑧ Do not place the Bluetooth earbuds in extreme temperature (use ambient operating temperature range -10°C-55°C)
- ⑨ Do not expose the Bluetooth earbuds to moisture.
- ⑩ If you do not use the Bluetooth earbuds for a long time, please charge it fully and charge it once a week to extend the life of the Bluetooth earbuds.

Safety guidance:

- ① please use the standard 5V charger (4.9-5.5V)
- ② Do not place the charging case and the Bluetooth earbuds next to the flammable explosives.
- ③ Do not disassemble the charging case and Bluetooth earbuds, or insert other items into the product to avoid damage to the product or even cause harm to you.

Serious warning:

Do not use this product while charging. Please use the adapter specified by the manufacturer to charge the product. Do not disassemble the built-in lithium battery. Do not let the metal contact or short the electrode. Do not touch or squeeze the battery to avoid Place in a humid or hot (>60 ° C) environment.

Warranty Card

Warranty certificate, please fill in and keep it safely

ProductName _____

Sales date _____

Shop _____

After sale service _____

Packing details:

Item Name	Quantity
Bluetooth earbuds	2 pcs
Charger case	1 pcs
User manual	1 pcs
Eartips	2 pcs
Use charger line	1 pcs

This device complies with part 15 of the FCC Rules. Operation is subject to the following two conditions: (1) This device may not cause harmful interference, and (2) this device must accept any interference received, including interference that may cause undesired operation.

Any Changes or modifications not expressly approved by the party responsible for compliance could void the user's authority to operate the equipment.

Note: This equipment has been tested and found to comply with the limits for a Class B digital device, pursuant to part 15 of the FCC Rules. These limits are designed to provide reasonable protection against harmful interference in a residential installation. This equipment generates uses and can radiate radio frequency energy and, if not installed and used in accordance with the instructions, may cause harmful interference to radio communications. However, there is no guarantee that interference will not occur in a particular installation. If this equipment does cause harmful interference to radio or television reception, which can be determined by turning the equipment off and on, the user is encouraged to try to correct the interference by one or more of the following measures:

- Reorient or relocate the receiving antenna.
- Increase the separation between the equipment and receiver.
- Connect the equipment into an outlet on a circuit different from that to which the receiver is connected.
- Consult the dealer or an experienced radio/TV technician for help.

RF warning for Portable device: The device has been evaluated to meet general RF exposure requirement. The device can be used in portable exposure condition without restriction.