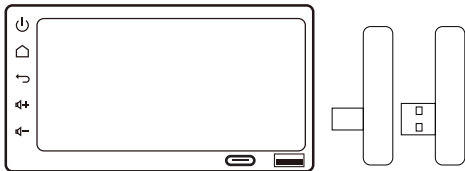
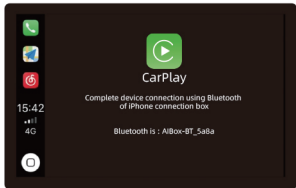
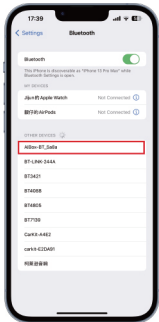


# **User Manual**

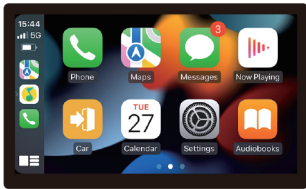
Step 1: Insert the X1-RGB into the USB / Type-C port



Step 2: Use your iPhone to match Bluetooth.  
The name of Bluetooth is: **AIBox-BT\_xxxx**



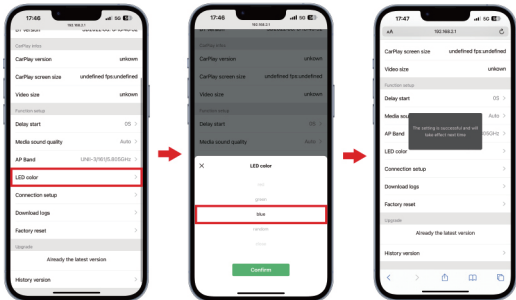
Step 2: Use CarPlay with "AIBox-BT\_XXXX" ?  
Click "Use CarPlay" to enter.



# LED light color Settings

Connect to Bluetooth on the phone, enter <http://192.168.2.1> in the browser.

Find the LED color, click to enter the replacement color, the next time it takes effect



## CarPlay Box Upgrade

Put directly into the USB 5V power supply upgrade, such as phones charger, car charger USB.(If you plug the original CarPlay USB port to upgrade, the upgrade will fail)

Car charger



Phone charger



Original car interface



#### FCC Statement

This equipment has been tested and found to comply with the limits for a ClassB digital device, pursuant to part 15 of the FCC rules. These limits are designed to provide reasonable protection against harmful interference in a residential installation. This equipment generates, uses and can radiate radio frequency energy and, if not installed and used in accordance with the instructions, may cause harmful interference to radio communications.

However, there is no guarantee that interference will not occur in a particular installation. If this equipment does cause harmful interference to radio or television reception, which can be determined by turning the equipment off and on, the user is encouraged to try to correct the interference by one or more of the following measures: -Reorient or relocate the receiving antenna. -Increase the separation between the equipment and receiver. -Connect the equipment into an outlet on a circuit different from that to which the receiver is connected. -Consult the dealer or an experienced radio/TV technician for help. To assure continued compliance, any changes or modifications not expressly approved by the party.

Any changes or modifications not expressly approved by the party responsible for compliance could void the user's authority to operate this equipment.

This equipment complies with Part 15 of the FCC Rules. Operation is subject to the following two conditions:

- (1) This device may not cause harmful interference, and
- (2) This device must accept any interference received, including interference that may cause undesired operation.

#### FCC Radiation Exposure Statement:

The equipment complies with FCC Radiation exposure limits set forth for uncontrolled environment. This equipment should be installed and operated with minimum distance 20cm between the radiator and your body