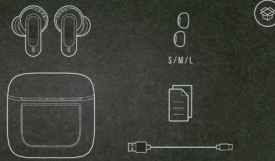


QUICK OPERATION GUIDE

PRODUCT LIST

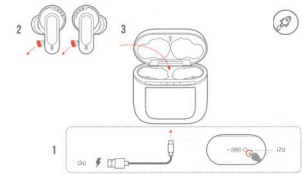


WEARING METHOD

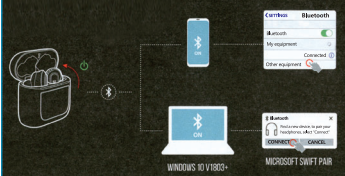
1 Try different size earbud covers for better fit and audio performance



FIRST USE



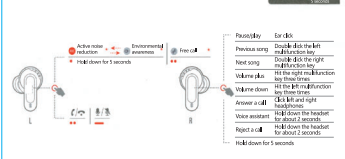
OPEN AND CONNECT



DUAL CONNECTION + SYNCHRONIZATION



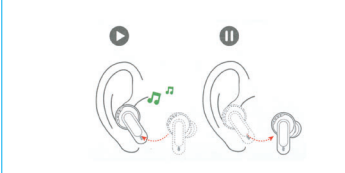
TOUCH COMMAND



TOUCH COMMAND



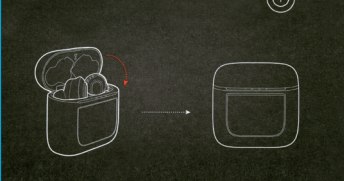
AUTO PLAY/PAUSE



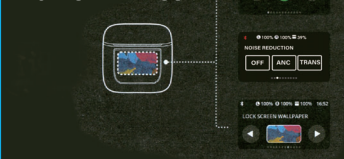
SQUELCH MODE



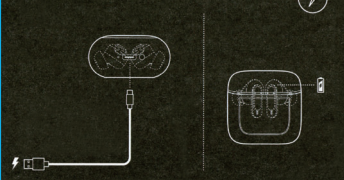
CLOSE



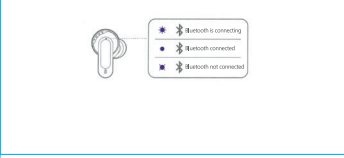
SMART CHARGING BOX SETTINGS



CHARGING



LED INDICATOR MODE



OPEN AND CONNECT

TEST ITEM	MAKE CLEAR
Power on	Open the cover lid, activate the pairing function, and turn on the power button for 30s.
Power off	Hold down the power button for 30s until the earbuds turn off and stop.
Touch pairing mode	Activate the pairing mode for the case.
Phone pairing mode	Open the cover and turn on the pairing mode. Press the pairing button and the power button for 30s.



The Bluetooth® word mark and logo are registered trademarks owned by Bluetooth SIG, Inc. and any use of such marks by HARBEST International is done so under license. Other trademarks and trade names are those of their respective owners.

To extend battery life, consider a charge all night over the weekend. Battery life varies depending on usage and settings.

Product specifications and app screens are subject to change without notice.
HP_18_1001_P102_024_00001_01_01

WARNING

This device complies with Part 15 of the FCC Rules. Operation is subject to the following two conditions:
(1) This device may not cause harmful interference, and
(2) this device must accept any interference received, including interference that may cause undesired operation.

Changes or modifications not expressly approved by the party responsible for compliance could void the user's authority to operate the equipment.

NOTE: This equipment has been tested and found to comply with the limits for a Class B digital device, pursuant to Part 15 of the FCC Rules. These limits are designed to provide reasonable protection against harmful interference in a residential installation. This equipment generates, uses and can radiate radio frequency energy and, if not installed and used in accordance with the instructions, may

cause harmful interference to radio communications. However, there is no guarantee that interference will not occur in a particular installation.

If this equipment does cause harmful interference to radio or television reception which can be determined by turning the equipment off and on, the user is encouraged to try to correct the interference by one or more of the following measures:
—Reorient or relocate the receiving antenna.
—Increase the separation between the equipment and receiver
—Connect the equipment into an outlet on a circuit different from that to which the receiver is connected.
—Consult the dealer or an experienced radio/TV technician for help

NOTE: This device and its antenna(s) must not be co-located or operation in conjunction with any other antenna or transmitter

The device has been evaluated to meet general RF exposure requirement. The device can be used in portable exposure condition without restriction.