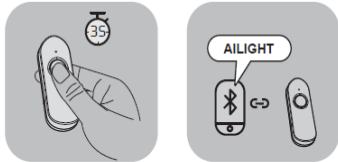


How to Pair Bluetooth with Smartphone?



1. Press and hold the button for 3 seconds to turn on the remote controller. Then the red and green indicator light flicker alternately.
2. Open the bluetooth of the smartphone and start to search.
3. Please click "AILIGHT" in the device list and start to pair it with the remote controller. When pairing successfully, there will be a notification saying connected, The red indicator light goes out and the green indicator light will flicker every 2 seconds.
4. Now you can use the controller to take photos in photo mode.
5. When in video mode, press the button to start video shooting and stop after pressing again.
6. The controller will go to sleep mode and the green indicator light will go out without extra operations in 5 minutes. Press again and it will be activated.
7. The controller will automatically shut down if no operation happens within 30 minutes.

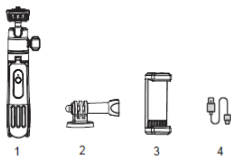
*Notes: The controller will automatically shut down in 5 minutes if pairing has failed.

Kindly Reminder

1. The remote controller has built-in lithium battery. No need to replace the battery.
2. The red indicator light of the remote controller will be steady on when the power is low as a reminder to charge it in time.
3. Please use a 5V/100mA Micro USB cable to charge the remote controller. The red indicator light will flicker during charging. The green indicator light will be steady on when fully charged.
4. Recommended to charge it every 3 months if not in use to keep it working properly.
5. The remote control distance is within 35ft as recommended.

Packing List:

- | | |
|----------------------|-----|
| 1. Tripod | x 1 |
| 2. GoPro Adapter | x 1 |
| 3. Mobile Phone Clip | x 1 |
| 4. Micro USB Cable | x 1 |



Warranty and Contact

We provide 1 year warranty for the tripod. Any question please contact us.

FCC statement

This device complies with part 15 of the FCC Rules. Operation is subject to the following two conditions:

- (1) This device may not cause harmful interference, and
- (2) this device must accept any interference received, including interference that may cause undesired operation.

Any changes or modifications not expressly approved by the party responsible for compliance could void the user's authority to operate the equipment.

This equipment has been tested and found to comply with the limits for a Class B digital device, pursuant to part 15 of the FCC Rules. These limits are designed to provide reasonable protection against harmful interference in a residential installation. This equipment generates, uses and can radiate radio frequency energy and, if not installed and used in accordance with the instructions, may cause harmful interference to radio communications. However, there is no guarantee that interference will not occur in a particular installation. If this equipment does cause harmful interference to radio or television reception, which can be determined by turning the equipment off and on, the user is encouraged to try to correct the interference by one or more of the following measures:

-Reorient or relocate the receiving antenna.

-Increase the separation between the equipment and receiver.

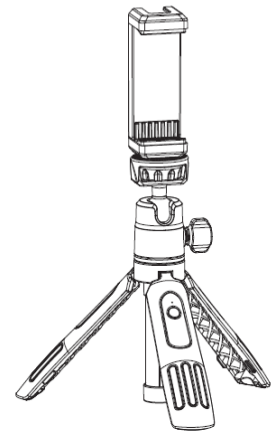
-Connect the equipment into an outlet on a circuit different from that to which the receiver is connected.

-Consult the dealer or an experienced radio/TV technician for help.

FCC Radiation Exposure Statement

This equipment complies with FCC radiation exposure limits set forth for an uncontrolled environment.

AILIGHT

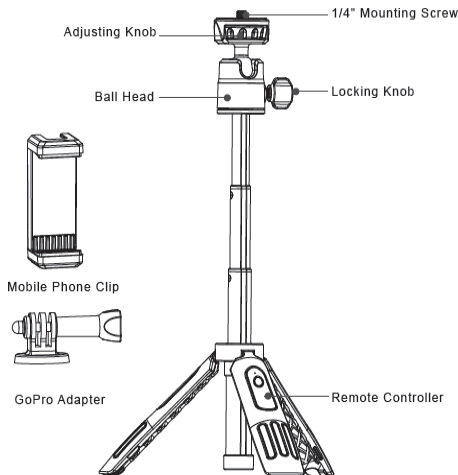


TR02

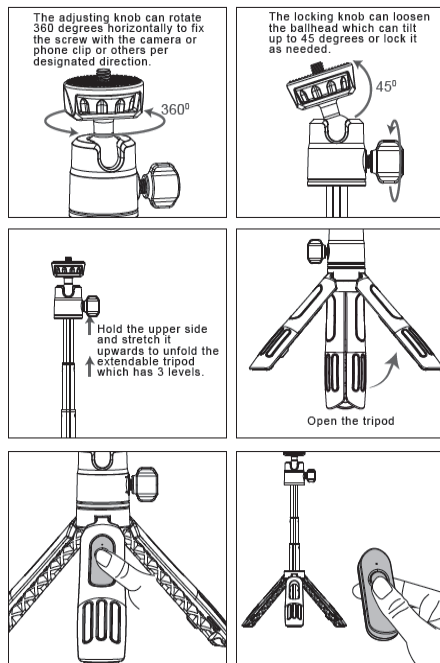
Desktop Bluetooth Extendable Tripod

DESKTOP BLUETOOTH EXTENDABLE TRIPOD MANUAL

Thank you for choosing our mini tripod. Please read the user manual carefully before using the product and keep it properly.



Tripod Using Diagram



1. Carefully open the tripod fully to avoid damage to the camera.
2. Ensure all screws are locked tightly when moving the tripod.
3. Please do not overload the tripod, otherwise it may cause damage to the product and affect the shooting.
4. Please remember to clean the product after using it, especially in damp and sandy environment.
5. Clean it with a soft cloth and the detergent. Then dry it with a clean cloth and keep it clean.

Specifications

| | | | |
|--|-------------------------------------|--|---|
| | UNC 1/4 screw | | Folded Height: 17.5cm / 6.89Inch |
| | Weight: 185g / 6.5 Ounces | | Minimum height: 13.5cm / 5.3Inch |
| | Load: 500g / 1.1LBS | | Maximum Height: 35cm / 13.78Inch |
| | Remote Control Distance: 35ft (Max) | | Battery Capacity: 50mAh |
| | Charging: 5V/100mA | | Full Battery Life: Can Take 2000 Photos |