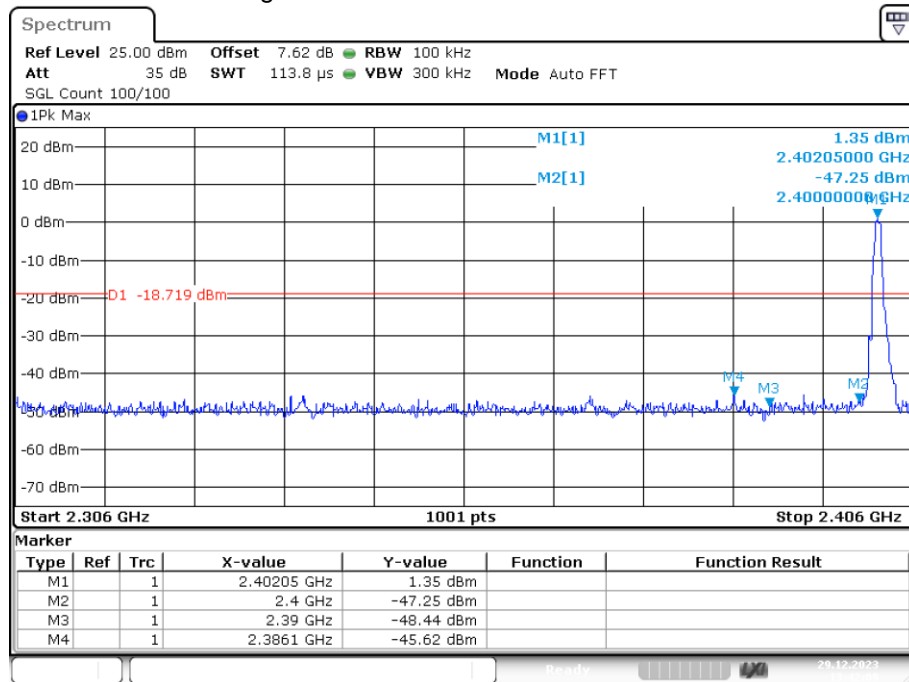


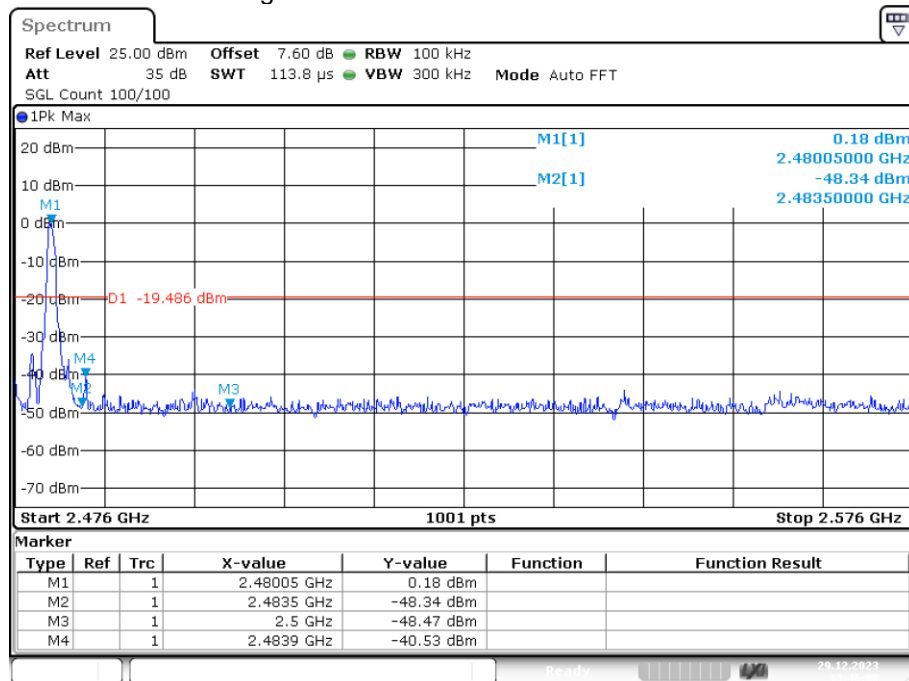
GFSK (1M)

Band Edge NVNT BLE 1M 2402MHz Ant1 Emission



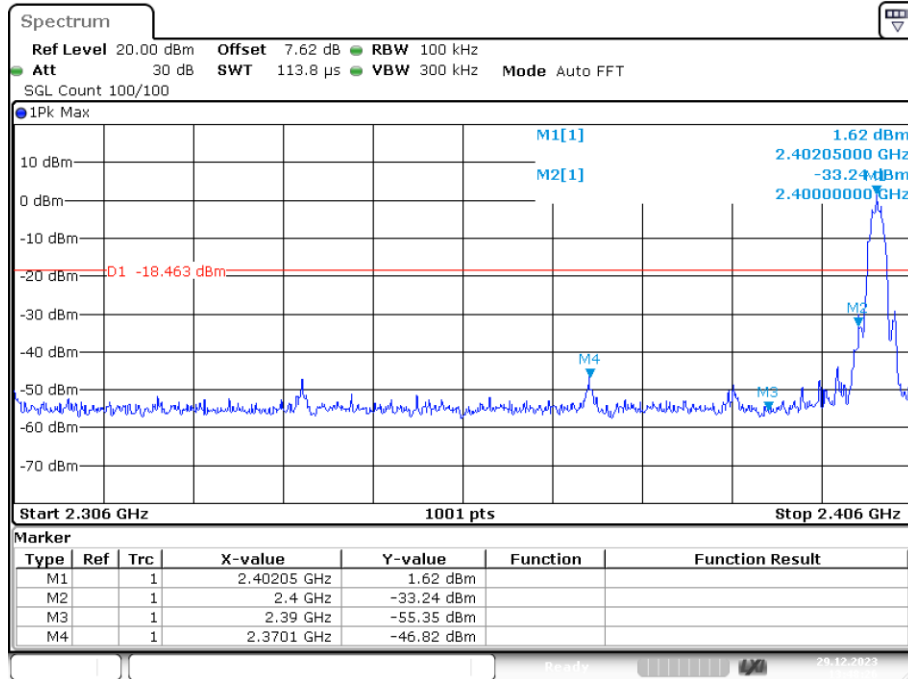
Date: 29.DEC.2023 13:42:09

Band Edge NVNT BLE 1M 2480MHz Ant1 Emission



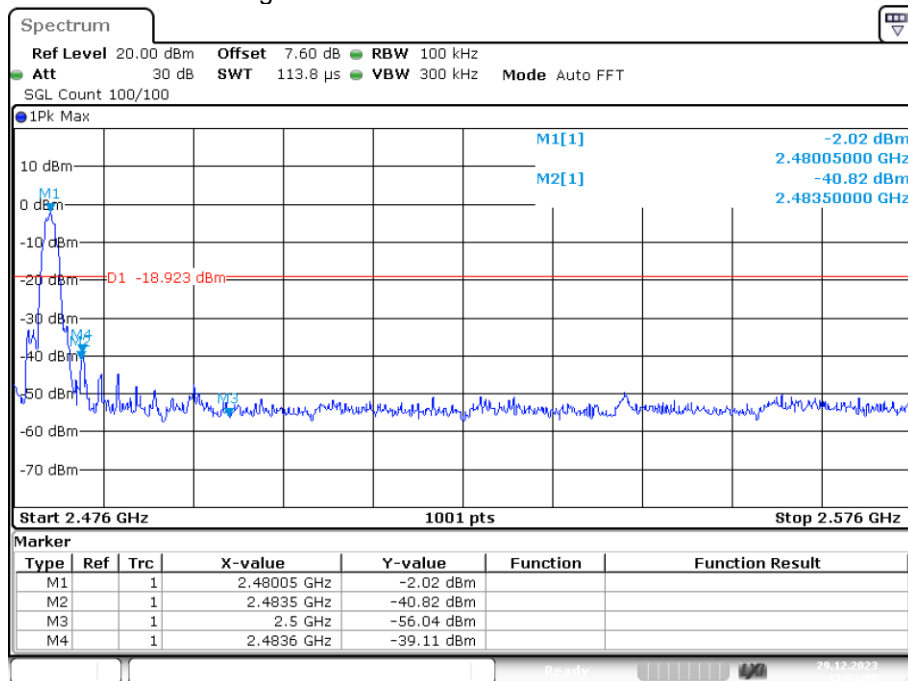
Date: 29.DEC.2023 13:46:00

GFSK (2M)
Band Edge NVNT BLE 2M 2402MHz Ant1 Emission



Date: 29.DEC.2023 13:48:26

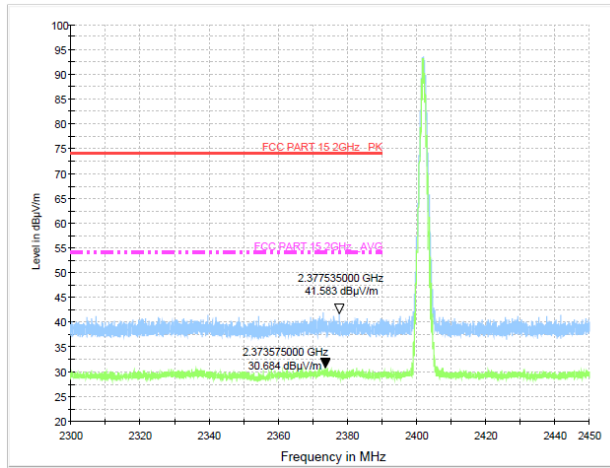
Band Edge NVNT BLE 2M 2480MHz Ant1 Emission



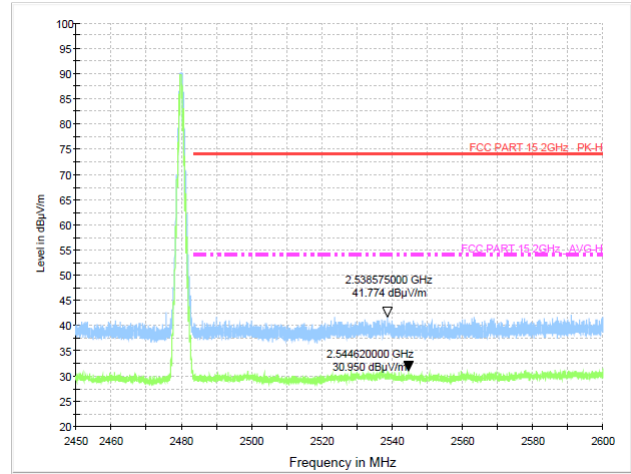
Date: 29.DEC.2023 13:51:57

Radiated Method: GFSK(1M)

Test Mode: CH-L

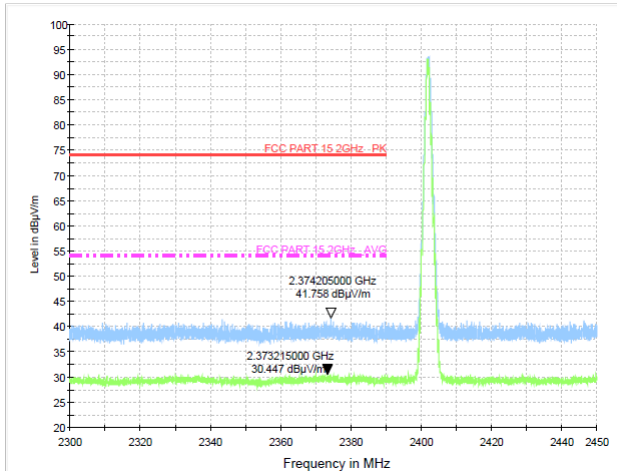


Test Mode: CH-H

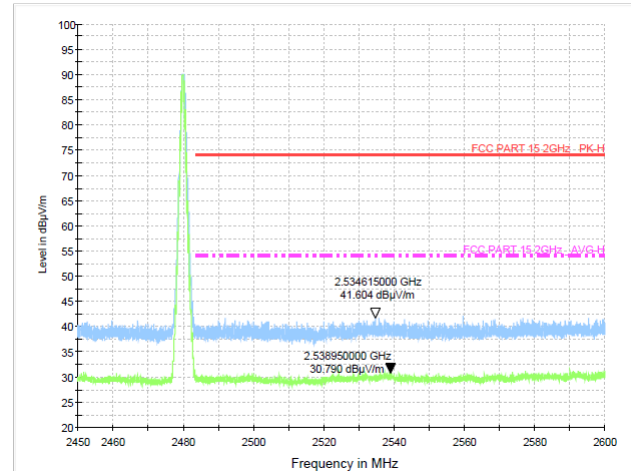


Radiated Method: GFSK(2M)

Test Mode: CH-L



Test Mode: CH-H



9. ANTENNA REQUIREMENT

9.1. Standard Requirement

An intentional radiator shall be designed to ensure that no antenna other than that furnished by the responsible party shall be used with the device. The use of a permanently attached antenna or of an antenna that uses a unique coupling to the intentional radiator shall be considered sufficient to comply with the provisions of this Section. The manufacturer may design the unit so that a broken antenna can be replaced by the user, but the use of a standard antenna jack or electrical connector is prohibited.

9.2. Antenna Connected Construction

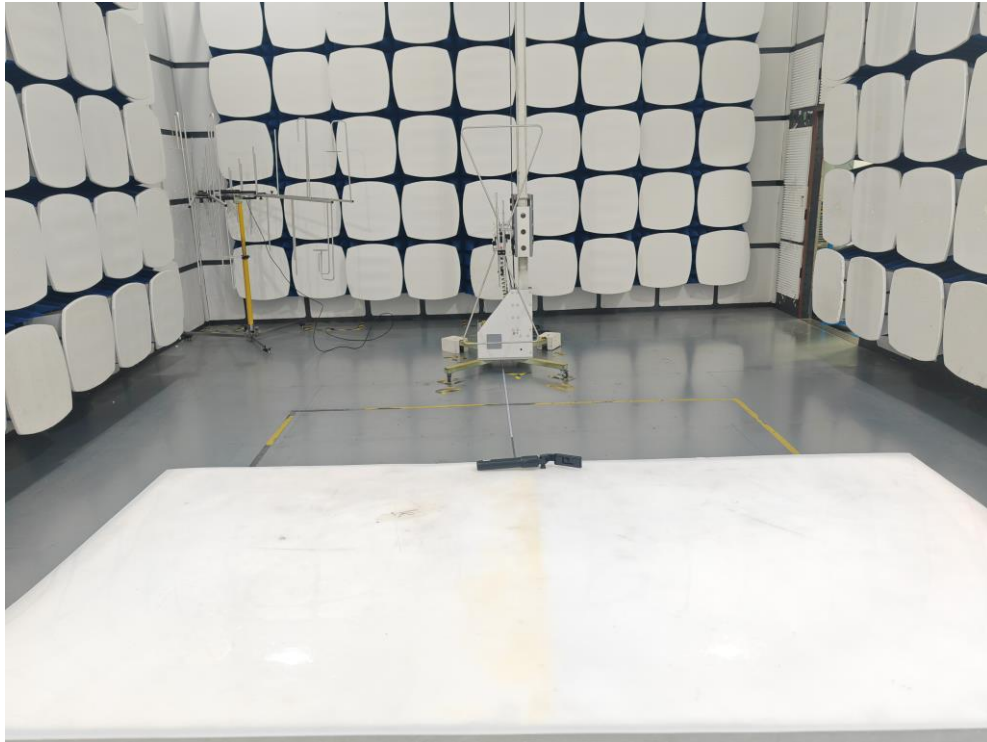
The antenna is internal antenna and no consideration of replacement. Please see EUT photo for details.

9.3. Results

The EUT antenna is Internal Antenna. It complies with the standard requirement.

10. TEST SETUP PHOTO

10.1. Photo of Radiated Emission test

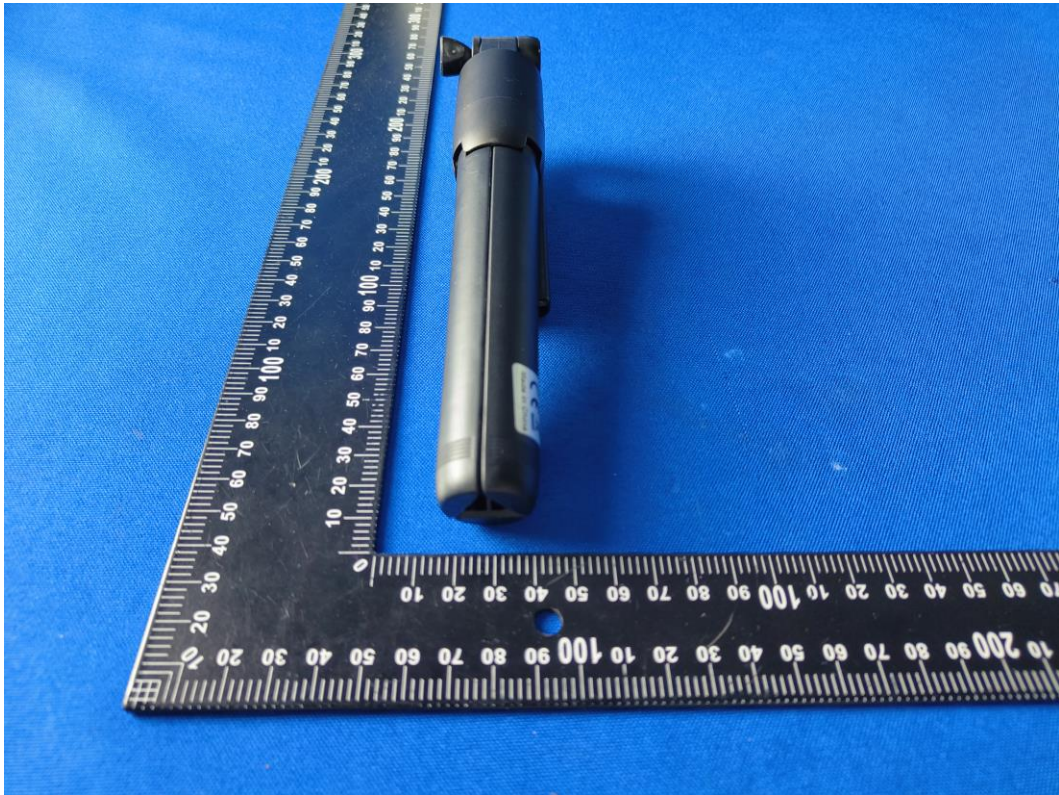


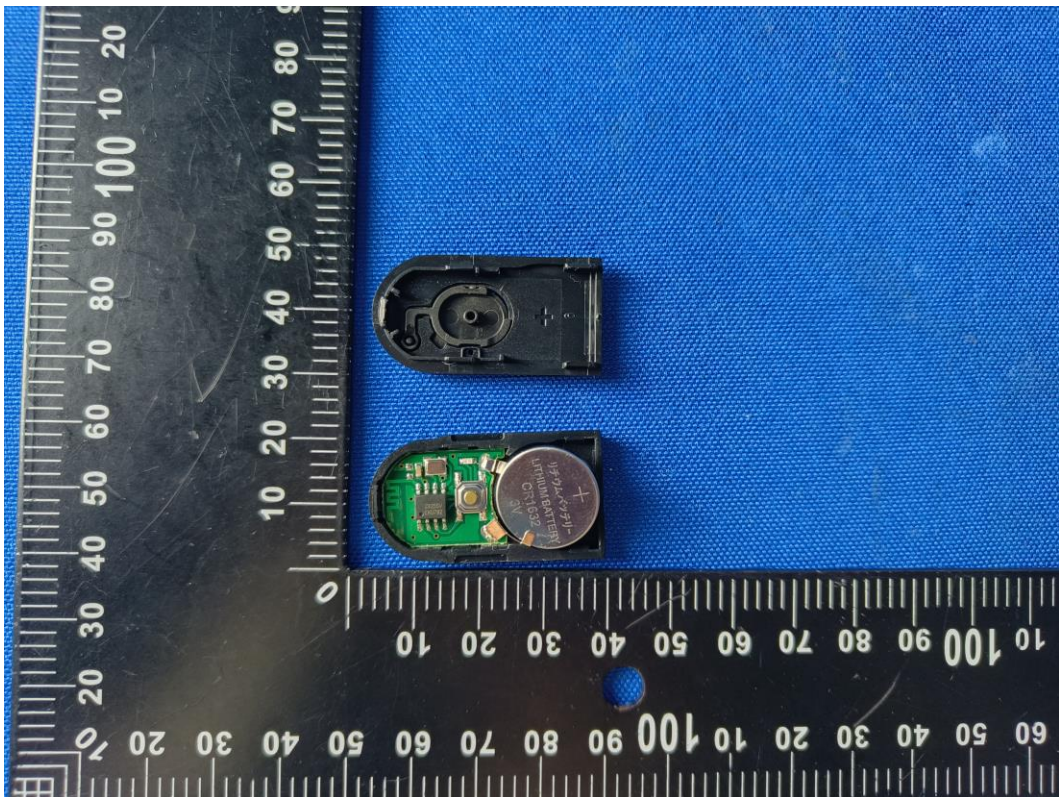
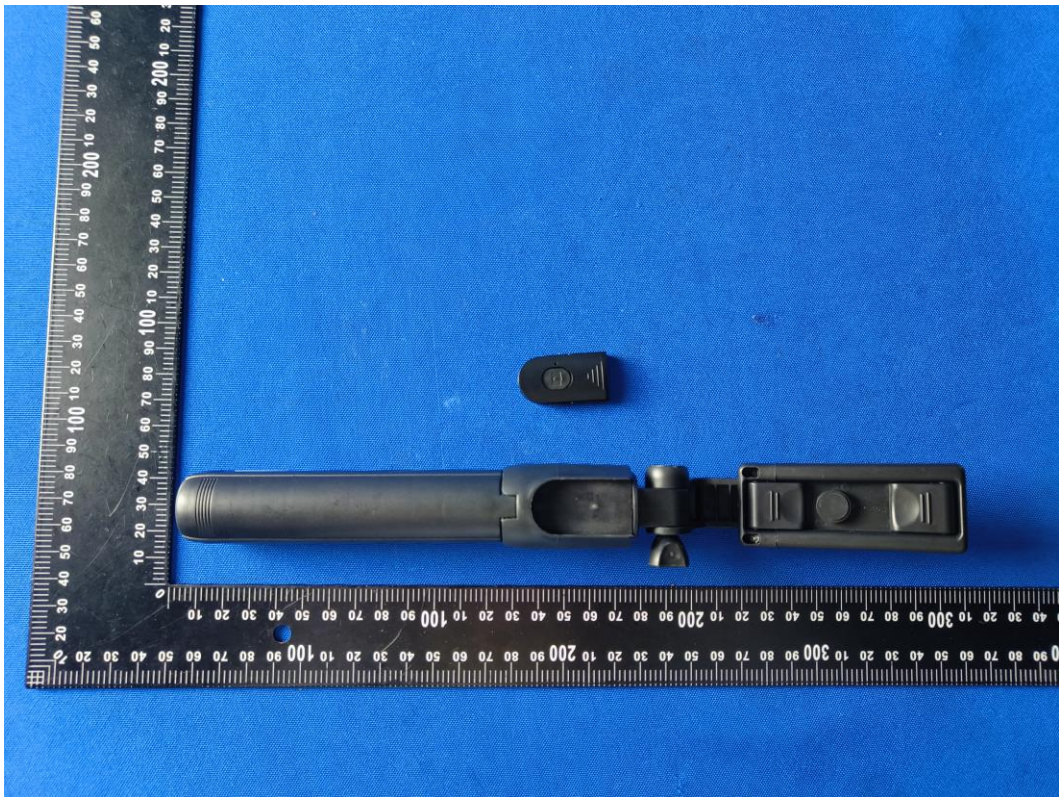
11.EUT PHOTOS

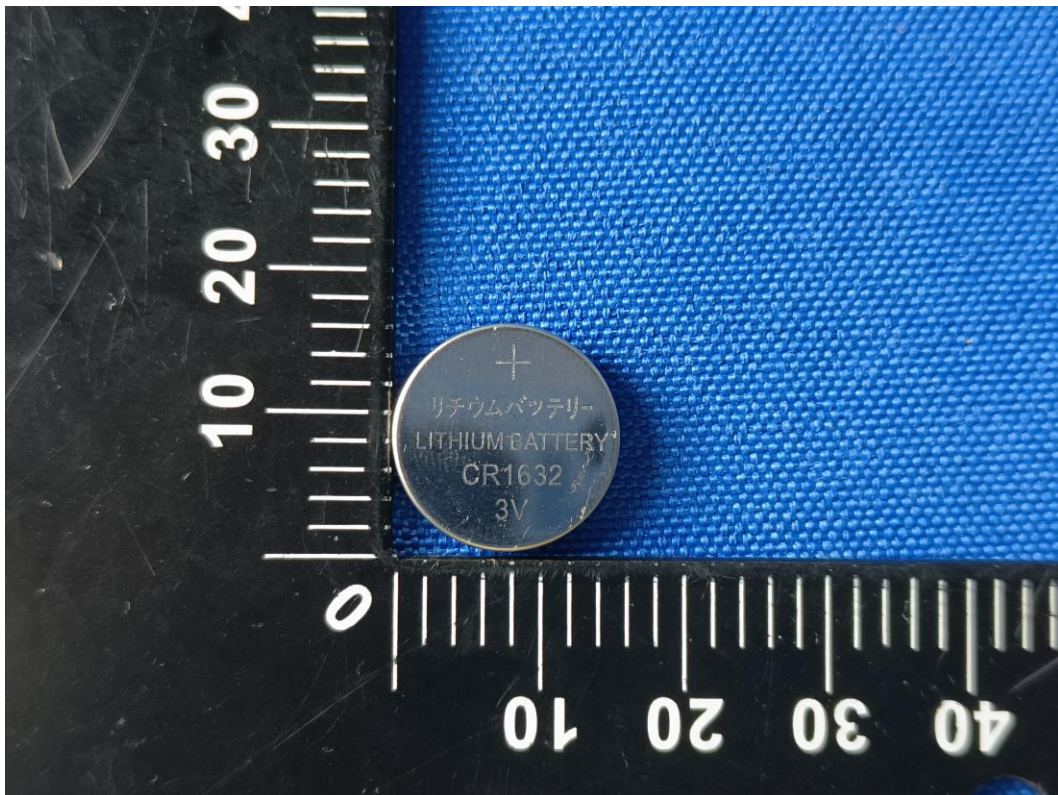
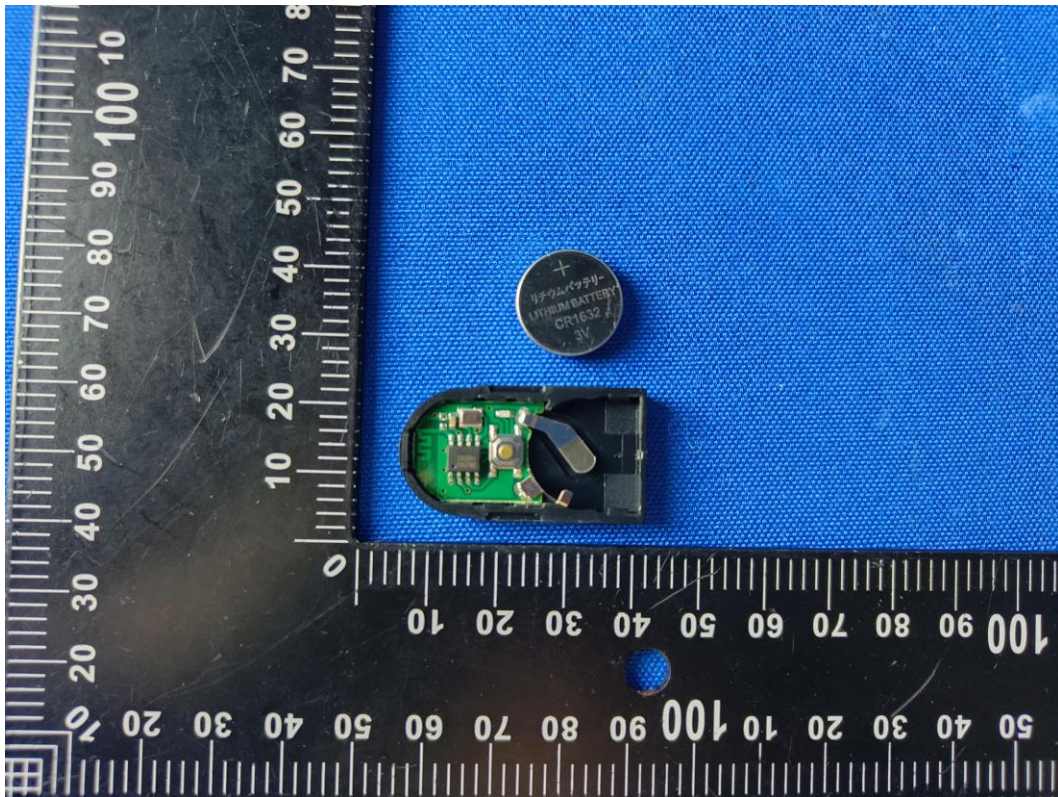


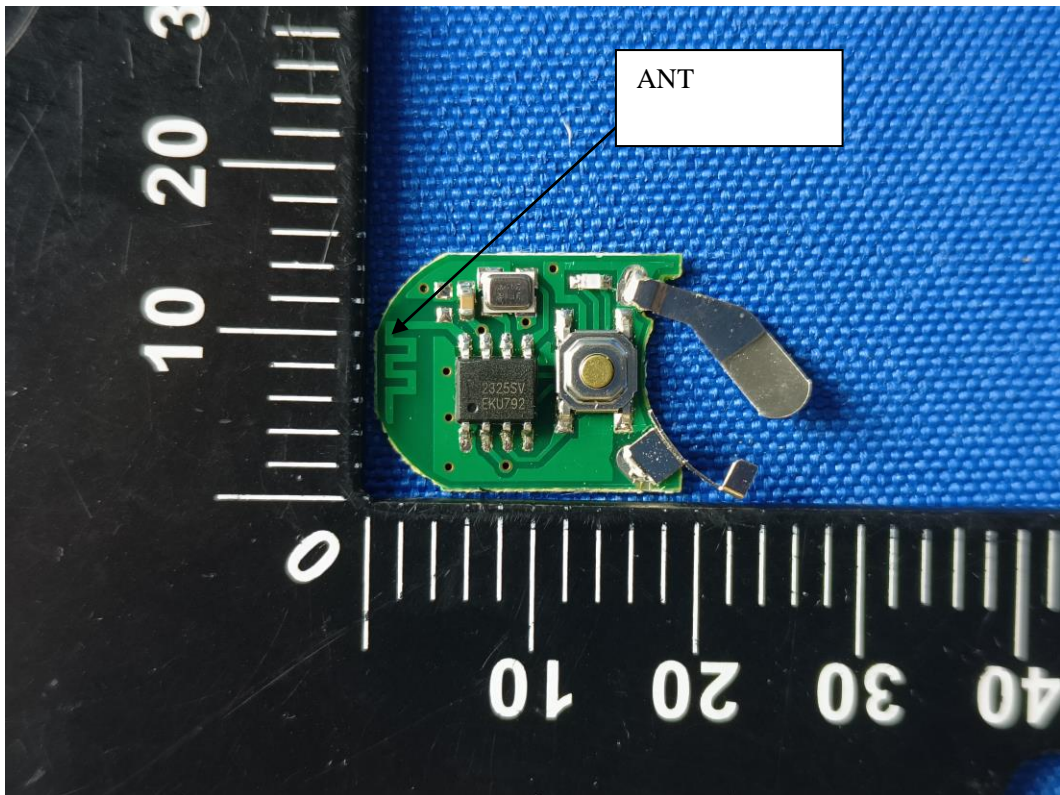
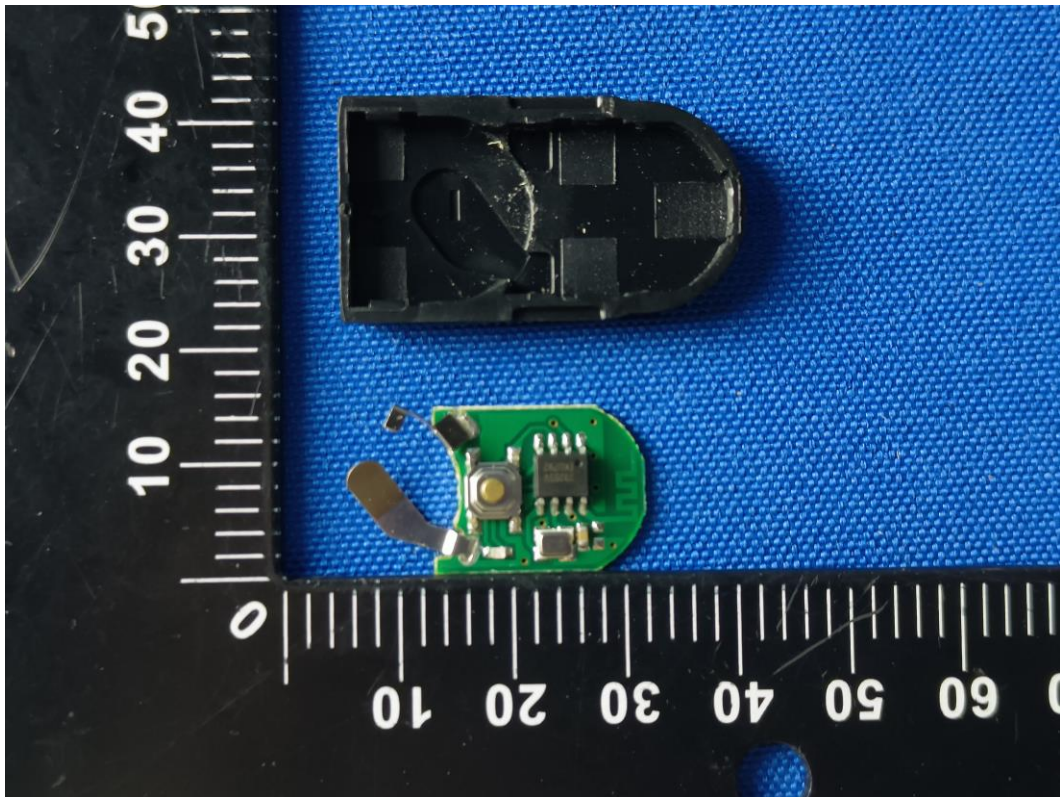


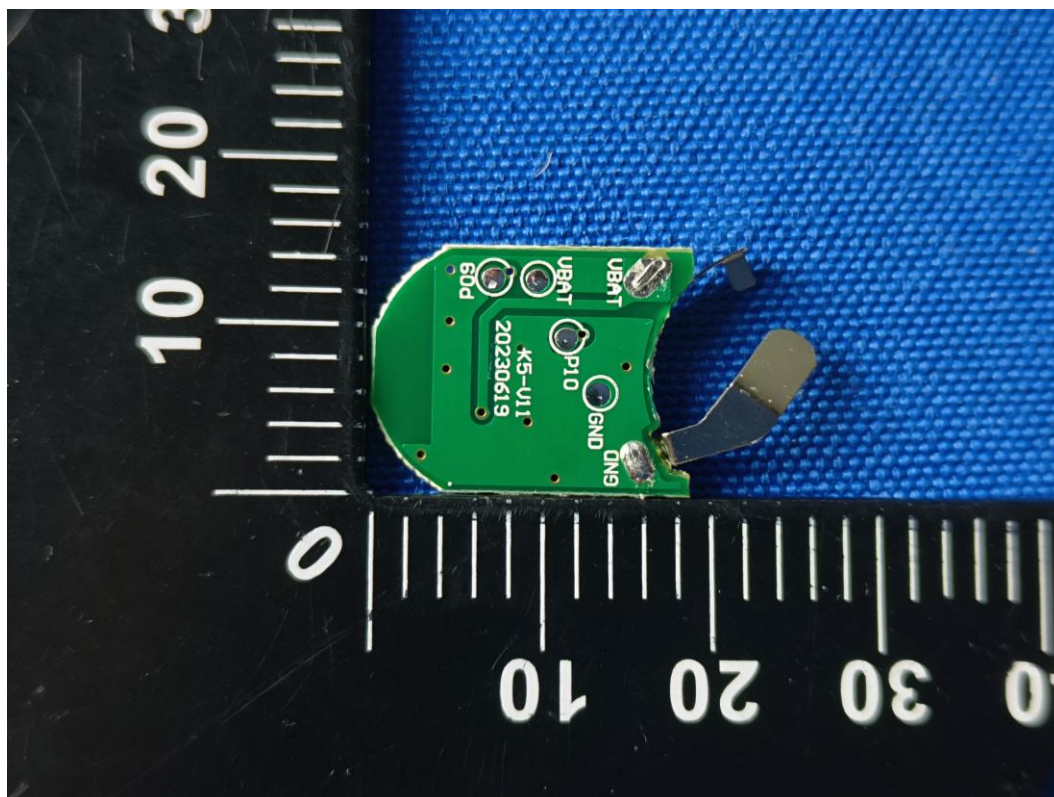












-----END OF REPORT-----