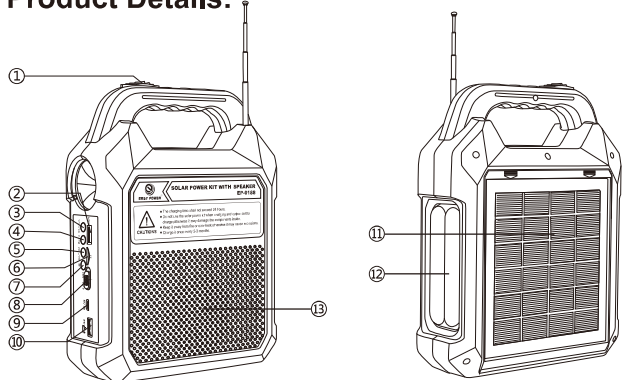


SOLAR WIRELESS SPEAKER

Product Parameters:

Model:	EP-0168
Product Size:	172mm × 70mm × 225mm
Material:	Plastic
Solar Panel Power:	6V 2W
Output Voltage:	3V / 5V
STC:	Irradiance 1000W/m ² Module temperature 25°C, Solar Spectrum AM=1.5
Battery Capacity:	3600mAh
LED Lights Work Time:	5H
Speaker Work Time:	8~14H
Solar Charge Time:	11H
Bluetooth:	Version 5.3, Bluetooth Speaker.

Product Details:



- | | |
|--------------------------------|-------------------------|
| ① Light Switch | ⑧ Power Switch |
| ② U Disk Socket | ⑨ 5V Input |
| ③ Volume turn Up / Next Song | ⑩ DC 5V USB Output |
| ④ Suspend / FM | ⑪ Solar Panel |
| ⑤ Volume turn Down / Last Song | ⑫ LED Light |
| ⑥ TF Card Socket | ⑬ 2.5 Inch Loud Speaker |
| ⑦ Start / Mode Conversion | |

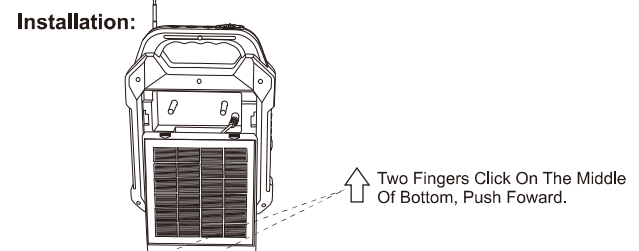
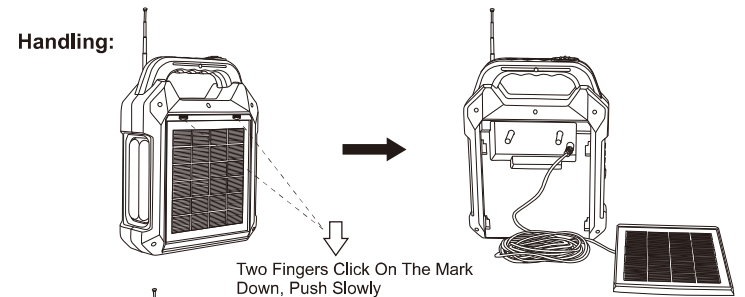
148mm

正面

Product Features:

- 1.LED Lighting.
- 2.FM/MP3 LCD Radio With Speaker.
- 3.Backup Charger (Main host).
- 4.USB Phone Charging.
- 5.High Brightness LED Flashlight.

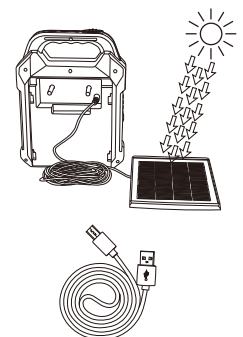
Handling Instructions:



Charging Method:

1. Remove The Solar Panel, Place It In a Sunny Place, Let The Panel Perpendicular To The Sun Light at 45-90 Degree, Maximize The Power Of The Solar Panel.

2. Connect The Solar Panel To Your Device Using The Multi Head USB Cable.



反面

210mm

FCC Statement

This equipment has been tested and found to comply with the limits for a Class B digital device, pursuant to part 15 of the FCC Rules. These limits are designed to provide reasonable protection against harmful interference in a residential installation. This equipment generates, uses and can radiate radio frequency energy and, if not installed and used in accordance with the instructions, may cause harmful interference to radio communications. However, there is no guarantee that interference will not occur in a particular installation. If this equipment does cause harmful interference to radio or television reception, which can be determined by turning the equipment off and on, the user is encouraged to try to correct the interference by one or more of the following measures:

- Reorient or relocate the receiving antenna.
- Increase the separation between the equipment and receiver.
- Connect the equipment into an outlet on a circuit different from that to which the receiver is connected.
- Consult the dealer or an experienced radio/TV technician for help.

Caution: Any changes or modifications to this device not explicitly approved by manufacturer could void your authority to operate this equipment.

This device complies with part 15 of the FCC Rules. Operation is subject to the following two conditions: (1) This device may not cause harmful interference, and (2) this device must accept any interference received, including interference that may cause undesired operation.

RF Exposure Information

The device has been evaluated to meet general RF exposure requirement. The device can be used in portable exposure condition without restriction.