

尺寸:80x110mm(成品) 尺寸:560x110mm(展开)

3. 要求更换/维修产品时的规定:

- 1)请在需更换/维修产品时出示质保卡和发票或有效购买凭证;
- 2)质保卡丢失不补发,请妥善保管;
- 3)对更换的故障产品或维修更换的损坏零部件,公司有权处理,敬请谅解。

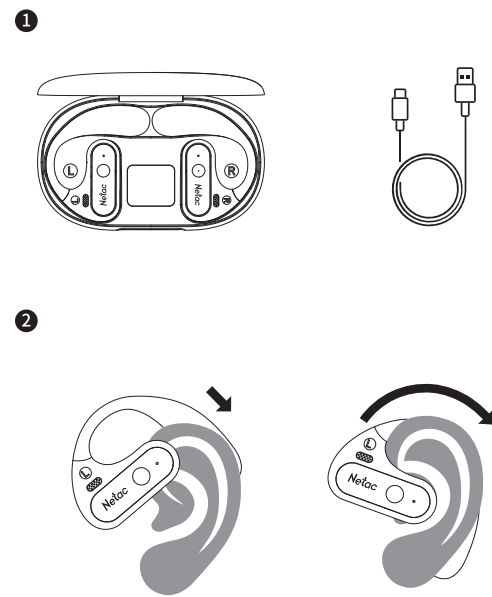
4. 其他声明:

- 1)若产品不符合免费质保范围或超出质保期,朗科将不予提供免费维修或退换服务;
- 2)质保卡中记载的内容如有与国家规定不符之处,以国家规定为准;
- 3)相关事宜请点击朗科中文网站<http://www.netac.com.cn>查询。

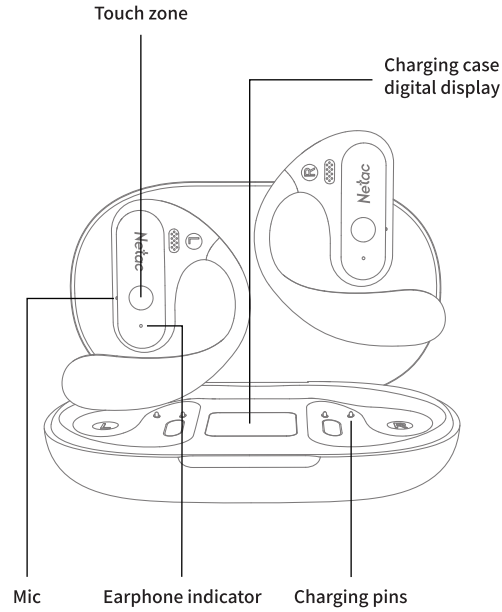
质保卡

| | |
|-------|--|
| 产品名称 | |
| 产品型号 | |
| 产品SN码 | |
| 购买日期 | |
| 用户姓名 | |
| 联系电话 | |
| 经销商名 | |
| 故障描述 | |

Please tears off the insulation film on the earphones.



Overview



Power On/Off

Auto power on: Take out the earphones, and the earphones will power on automatically and enter pairing mode, waiting to connect to the devices.

Manual power on: If the earphones are not in the charging case and are off, press and hold both earphones for 3s to power on.

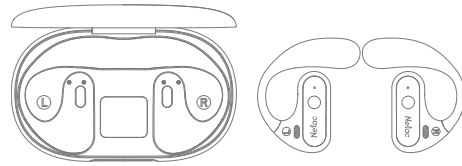
Auto power off:

1. Put the earphones into the charging case, and close the charging case, it will automatically power off and charge.
2. The earphones will automatically power off when it is not connected to the device for 5 mins.

Manual power off: If the earphones are on and connected, press and hold either earphones for 5s to power them off.

Pairing Mode

- 1 The earphones will automatically power on when taken out of the charging case.



- 2 Wear the earphones and enter pairing mode, the main headset indicator will flash alternating red and blue, and the secondary headset light will be off.

- 3 Select "Netac OS03" and tap to connect on your phone, there will be a sound prompt when the connection is complete.

Music

- ▶▶ **Play/pause:** Double-click the touch zone.
- ◀ **Previous song:** Long press the left earphone touch zone.
- ▶ **Next song:** Long press the right earphone touch zone.

Volume

- ◀+ **Volume up:** Triple-click the left earphone touch zone.
- ◀- **Volume down:** Triple-click the right earphone touch zone.

Call

- ☎ **Answer call:** Double-click the touch zone during an incoming call.
- ☎ **End call:** Double-click the touch zone during a call.
- ✖ **Reject call:** Long press the touch zone for 1s during an incoming call.
- ☎ **Cancel call:** Double-click the touch zone.

Voice Assistant

- Activate Siri:** Triple-click the left/right touch zone when connected and not on music.
- Cancel Siri:** Double-click the left/right touch zone.

Reset

While the earphones are in pairing mode, double-click the touch zone and then press and hold for 3s. Place the earphones into the charging case, the earphones will automatically power off and start charging. After removing the earphones, it will power on automatically and the reset is complete.

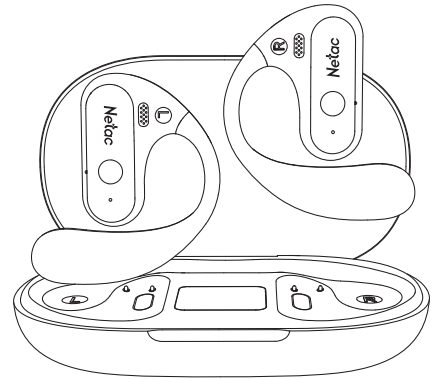
Earphones/Charging Case Indicator

| Earphones operation status | Earphones indicator status |
|--------------------------------|--------------------------------|
| Power on | Blinking red and blue |
| Charge | Red light |
| Fully charged | Lights off |
| Connect phone | Lights off |
| Charging case operation status | Charging case indicator status |
| USB-5V charge | Power display |
| Earphones charging | Power display |
| Low battery | Power display |

Specifications

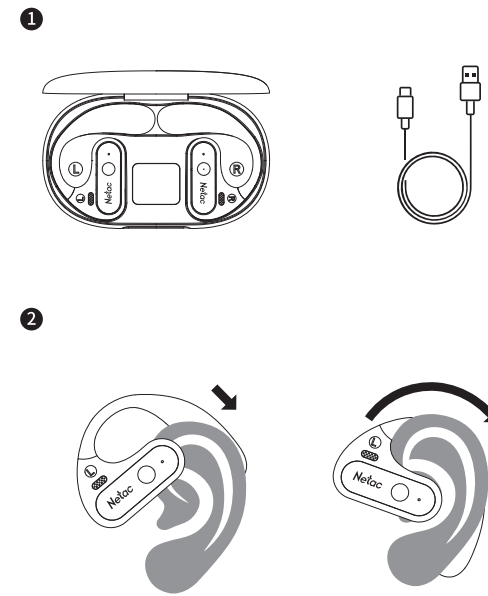
- Version: V5.4
- Talking Time: About 8H
- Music Playtime: Approx. 8H
- Total Playtime: 32H (With charging case)
- Transmission Range: ≥10m
- Earphones Charging Time: About 1.5H
- Earphones Battery: 50mAh
- Charging Case Battery: 400mAh
- Frequency: 2.40GHz-2.48GHz
- Support Protocols: A2DP1.3/HFP1.6/HSP1.2/AVRCP1.6/D11.3

Netac

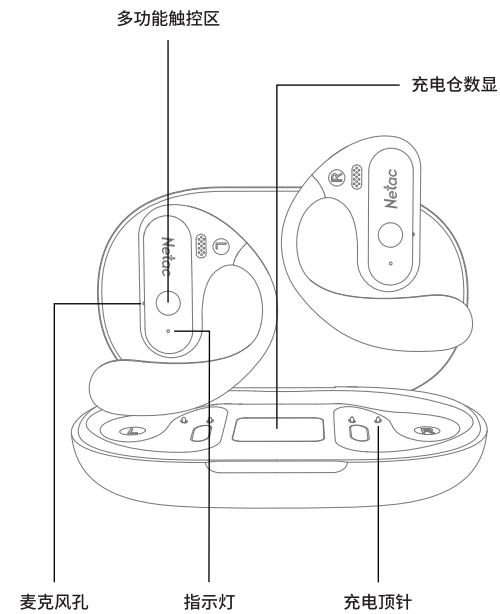


OS03
真无线开放式蓝牙耳机
Ture Wireless Open Earphones

请揭下绝缘贴后使用!



产品概述



开机 / 关机

自动开机:取出耳机,此时耳机自动开机匹配,等待连接设备。

手动开机:耳机不在充电仓并且是关机状态,长按左右耳机3秒开机。

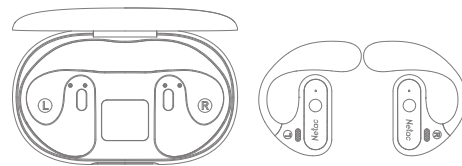
自动关机:1.将耳机放入充电仓,关上充电仓上盖,会自动关机并充电。

2.5分钟未连接设备状态下,耳机会自动关机。

手动关机:如果耳机处于开机并且互相连接状态,长按任意一只耳机5秒关机。

蓝牙配对

- 1 打开充电仓,取出耳机自动开机。



- 2 开机后将左右耳机贴近,组队成功后主耳机上的指示灯将红/蓝灯交替闪烁,副耳机的指示灯将熄灭。

- 3 打开手机蓝牙界面,搜索"Netac OS03",点击配对,连接成功并伴有提示音。

音乐

▶▶ **音乐暂停/播放:**播放时,双击多功能触控区。

◀ **上一曲:**长按左耳机多功能触控区。

▶ **下一曲:**长按右耳机多功能触控区。

音量调节

◀+ **音量+:**点击三下左耳机多功能触控区。

◀- **音量-:**点击三下右耳机多功能触控区。

通话

☎ **接听:**来电时,双击多功能触控区。

☎ **挂断:**通话时,双击多功能触控区。

✖ **拒接:**来电时,长按多功能触控区1秒。

☎ **取消通话:**双击多功能触控区。

唤醒语音助手

呼叫Siri:连接并处于不播放音乐状态下三击左/右多功能触控区。

取消Siri:双击左/右多功能触控区。

恢复出厂设置

耳机在配对状态下,双击多功能触控区后长按3秒。将耳机放入充电仓,耳机会自动关机并开始充电。取出耳机后,耳机会自动开机,重置完成。

耳机 / 充电仓指示灯

| 耳机工作状态 | 耳机指示灯状态 |
|----------|----------|
| 开机 | 红蓝灯交替闪烁 |
| 充电 | 亮红灯 |
| 充满 | 灭灯 |
| 连上手机 | 灭灯 |
| 充电仓工作状态 | 充电仓指示灯状态 |
| USB-5V充电 | 显示屏电量显示 |
| 充电仓给耳机充电 | 显示屏电量显示 |
| 充电仓低电状态 | 显示屏电量显示 |

参数规格

- 蓝牙版本:5.4
- 通话时间:约8小时
- 音乐播放:约8小时
- 综合续航:32小时
- 通信距离:≥10m
- 耳机充电时间:约1.5小时
- 耳机电池容量:50mAh
- 充电仓电池容量:400mAh
- 频率特性:2.40GHz-2.48GHz
- 支持协议:A2DP1.3/HFP1.6/HSP1.2/AVRCP1.6/D11.3

产品中有害物质的名称及含量

| 部件名称 | 有害物质 | | | | | |
|------|--------|--------|--------|--------------|------------|--------------|
| | 铅 (Pb) | 汞 (Hg) | 镉 (Cd) | 六价铬 (Cr(VI)) | 多溴联苯 (PBB) | 多溴二苯醚 (PBDE) |
| PCBA | × | ○ | ○ | ○ | ○ | ○ |
| 塑胶部件 | ○ | ○ | ○ | ○ | ○ | ○ |
| 充电线 | ○ | ○ | ○ | ○ | ○ | ○ |
| 包装材料 | ○ | ○ | ○ | ○ | ○ | ○ |
| 电池 | × | ○ | ○ | ○ | ○ | ○ |

本表格依据 SJ/T 11364-2014 的规定编制
 ○ 表示该有害物质在该部件所有物质材料中的含量均在 GB/T 26572-2011 规定的限量要求以下。
 × 表示该有害物质至少在该部件的某一物质材料中的含量超出 GB/T 26572-2011 规定的限量要求。

保修服务条例

感谢购买并使用朗科产品!为了使我们的服务让您更满意,购买后请认真阅读此质保卡并妥善保管。售后服务严格依据《中华人民共和国消费者权益法》、《中华人民共和国产品质量法》实行售后三包服务,服务内容如下:

1. 朗科真无线蓝牙耳机除依法实行三包外,自产品销售之日起,凭质保卡和发票或有效购买凭证,将享有七天无理由退货(电商购买渠道),十五天包换(品质问题),一年非人为有性能故障保修服务。

1)包换:真无线蓝牙耳机系列产品购买后十五天内,若发现非设备相容性问题或非人为损坏的产品质量问题时,可和朗科或其授权服务站联系产品换货服务(朗科只对产品主体进行更换,附件、资料、包装盒等不属于更换范围,更换产品只限于新品或功能正常的良品);

2)维修:真无线蓝牙耳机系列产品购买后一年内,若发现属于免费质保范围内的产品问题时,可和朗科官方联系维修服务,服务电话:400-105-5505。

2. 产品若出现以下任一情况,将不属于免费质保范围:

- 1)超过质保期;
- 2)无法提供有效的产品质保卡和有效购买凭证或相应的复印件,擅自涂改质保卡;
- 3)未经朗科公司书面允许情况下的改造、拆装、维修而发生的故障;
- 4)产品上丝印或序列号激光码磨损、缺失;
- 5)产品充电接口由于外力造成弯曲、变形等异常现象,产品外壳破损、变形等异常现象;
- 6)未依照使用说明上(使用指南)的指示维护所导致的故障损坏;
- 7)产品的损坏是受不可抗力灾难(如火灾、地震、雷击、水灾、台风灾等)、人为破坏(如敲打、跌落、破裂、重击等)、人为疏忽(如落水、遗失、未妥善保管等)或其它非正常使用所致。
- 8)因物理或电子及电磁的压力或干扰,电源不稳定及误用、闪电、静电、火或其它不可抗力因素而造成的损坏;
- 9)因暴露或存放在不当的环境(包含高温、低温或高湿度的环境)而造成的损坏;
- 10)因送至朗科公司维修站或授权服务站途中运送或包装不当而造成的损坏或遗失;
- 11)将朗科产品用于研发、生产用途或专业测试所导致的故障或损坏。

联系我们

北京朗科创新科技发展有限公司
 地址:北京市丰台区诺德中心二期11号楼
 地址:深圳市南山区高新区南区高新南六道10号朗科大厦
 服务电话:400-105-5505
 官方网址:www.netac.com.cn

Beijing Netac Innovation Technology Development Co., Ltd.
 Address: Building 11, Phase II, Nord Center, Fengtai District, Beijing
 Address: Netac Building, Number 6 High-tech South St, Nanshan District, Shenzhen, P.R. China 518057
 Tel: 400-105-5505
 Web: www.netac.com



FCC Statement

This device complies with part 15 of the FCC rules. Operation is subject to the following two conditions: (1) this device may not cause harmful interference, and (2) this device must accept any interference received, including interference that may cause undesired operation.

Changes or modifications not expressly approved by the party responsible for compliance could void the user's authority to operate the equipment.

NOTE: This equipment has been tested and found to comply with the limits for a Class B digital device, pursuant to part 15 of the FCC Rules. These limits are designed to provide reasonable protection against harmful interference in a residential installation. This equipment generates uses and can radiate radio frequency energy and, if not installed and used in accordance with the instructions, may cause harmful interference to radio communications. However, there is no guarantee that interference will not occur in a particular installation. If this equipment does cause harmful interference to radio or television reception, which can be determined by turning the equipment off and on, the user is encouraged to try to correct the interference by one or more of the following measures:

- Reorient or relocate the receiving antenna.
- Increase the separation between the equipment and receiver.
- Connect the equipment into an outlet on a circuit different from that to which the receiver is connected.
- Consult the dealer or an experienced radio/TV technician for help.

The device has been evaluated to meet general RF exposure requirement. The device can be used in portable exposure condition without restriction.