

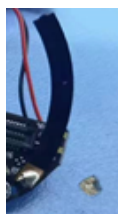
Product specification

Quick Reference Date

	Antenna module on the system board	
Frequenc Range	2400 ~ 2500GHz	
Ant. Port Input Pwr. (dBm)	0 (Typ. BT class 2 output power)	
Tot. Rad. Pwr. (dBm)	-1.2 (Input pwr – loss pwr)	
Peak EIRP(dBm)	0	
Directivity (dBi)	-1 (all direction antenna)	
Efficiency (dB)	0	
Gain (dBi)	0	
Maximum Power (dBm)	0 (XY-plane)	
Minimum Power (dBm)	(XY-plane)	
Avg. Power (dBm)	(XY-plane)	
Input Impedence(ohm)	50	
Polarization Type	V ertical & Horizontal	
V . S .W .R	< 1.4	

All the technical data and information contained herein are subject to change without prior notice

Antenna Layout & module on the system board

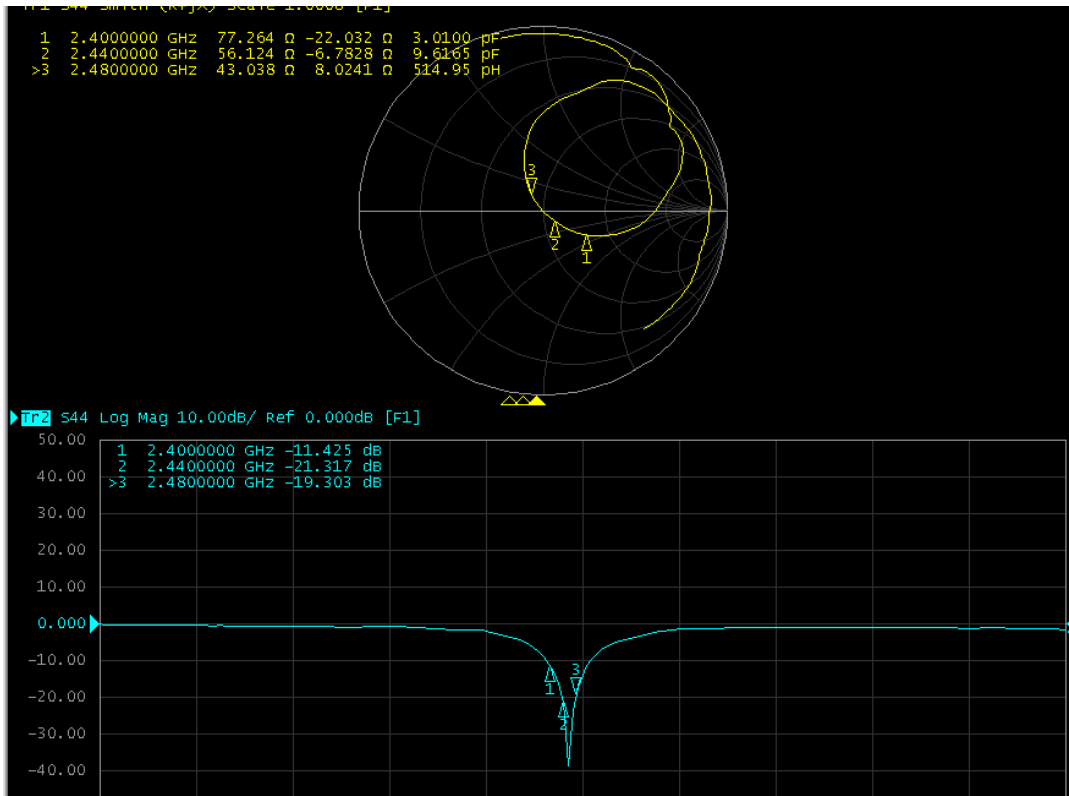


Antenna Gain

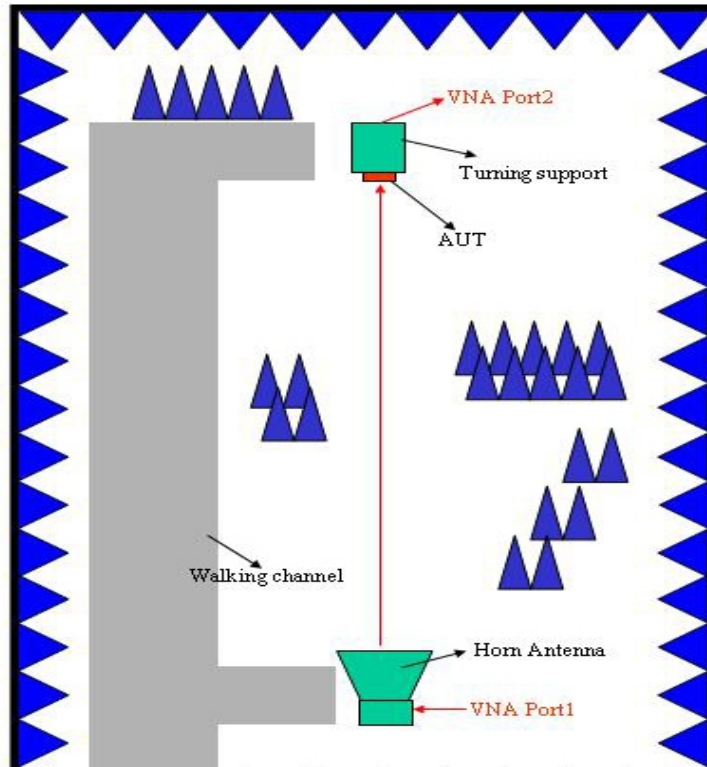
Gain Table

Unit in dBi 2.4G-2.5G	XY-plane		XZ-plane		YZ-plane		Efficiency
	Peak	Avg.	Peak	Avg.	Peak	Avg.	
Module Board	0.0	-0.5	-2.3	-3.6	-1.5	-3.0	

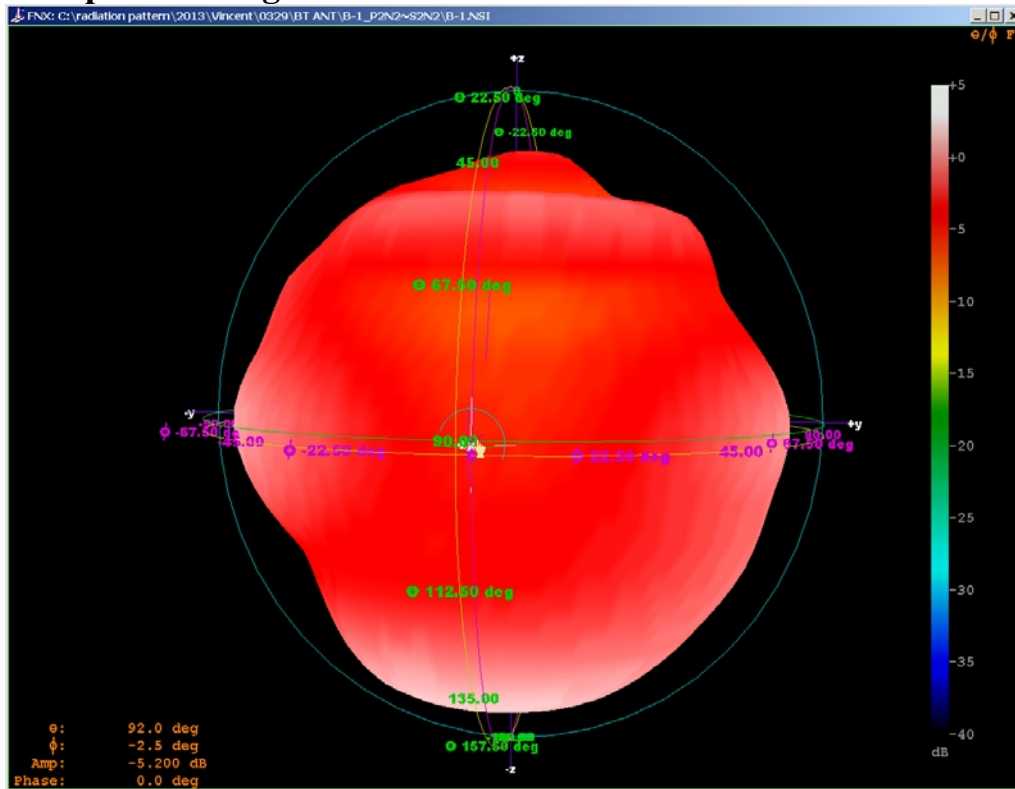
Return Loss



The Environment of Antenna Radiation Pattern



3D radiation pattern diagram



XY-plane

XZ-plane

YZ-plane