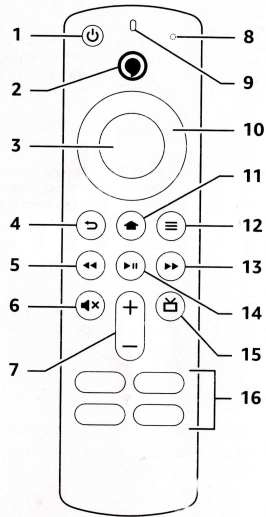


## Get to know your Alexa Voice Remote

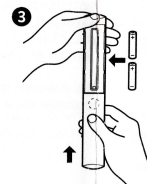
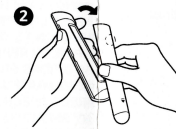
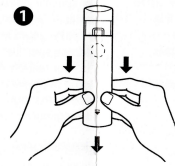


1. Power
2. Voice button
3. Select
4. Back
5. Rewind
6. Mute
7. Volume
8. Indicator LED
9. Microphone
10. Navigation
11. Home
12. Menu
13. Fast forward
14. Play/pause
15. Guide
16. App buttons

## Set up your Alexa Voice Remote

### Insert included AAA batteries.

Remove the battery door and insert the batteries into your Alexa Voice Remote.



### Pair the remote with your Fire TV device

You must pair your new remote to your Fire TV device. Choose the option below that fits your situation!

#### If this is a replacement remote and you don't have the original remote that came with your Fire TV device:

1. Restart your Fire TV device by unplugging the power cable from the electrical socket, then plugging it back in. Once the Home screen for Fire TV appears, your remote should be ready for use. If not, move to Step 2.
2. Press and hold the Home button on the new remote for at least 10 seconds. The LED on the remote will slowly flash amber. Continue holding down the Home button until the LED starts to rapidly flash. A notification will appear on your screen indicating that your remote is successfully paired.

#### If you do have the remote that came with your Fire TV device, you'll need both remotes for setup:

1. On your new remote, press and hold the Home button for 10 seconds. The indicator LED will slowly flash amber for 10 seconds, then flash faster when your remote is ready to connect.

Use your original remote for the following steps:

2. Press the Home button, navigate to Settings at the top of the screen, then select Remotes & Bluetooth Devices > Amazon Fire TV Remotes > Add New Remote.
3. Your Fire TV device will search for remotes it can connect with, then display them in a list.
4. Using your original remote, select the new remote from the list. You'll see an on-screen message when it has been successfully paired. You can now use your new Alexa Voice Remote.

### Troubleshooting tips

- If the new remote does not connect, remove and reinsert its batteries.
- If your remote isn't discovered, press and hold the Home button for at least 10 seconds until the LED rapidly flashes amber.
- Always replace dead batteries with new 1.5 V alkaline or 1.2 V NiMH rechargeable batteries.

## FCC Warning

This device complies with part 15 of the FCC Rules. Operation is subject to the following two conditions: (1) This device may not cause harmful interference, and (2) this device must accept any interference received, including interference that may cause undesired operation.

Any Changes or modifications not expressly approved by the party responsible for compliance could void the user's authority to operate the equipment.

**Note:** This equipment has been tested and found to comply with the limits for a Class B digital device, pursuant to part 15 of the FCC Rules. These limits are designed to provide reasonable protection against harmful interference in a residential installation. This equipment generates uses and can radiate radio frequency energy and, if not installed and used in accordance with the instructions, may cause harmful interference to radio communications. However, there is no guarantee that interference will not occur in a particular installation. If this equipment does cause harmful interference to radio or television reception, which can be determined by turning the equipment off and on, the user is encouraged to try to correct the interference by one or more of the following measures:

- Reorient or relocate the receiving antenna.
- Increase the separation between the equipment and receiver.
- Connect the equipment into an outlet on a circuit different from that to which the receiver is connected.
- Consult the dealer or an experienced radio/TV technician for help.

The device has been evaluated to meet general RF exposure requirement. The device can be used in portable exposure condition without restriction.