

# SMD CERAMIC ANTENNA

## Data Sheet

---

---

### CS-2450-31-A

For 2400-2484MHz

3.2x1.6mm [EIA1206]

Manufacturer: Shenzhen Kewei New Technology Co., Ltd.

Address:

Room 305, Floor 3, Building C, City Shanhai Center,  
No. 11 Zhongxing Road, Bantian Street, Longgang District, Shenzhen

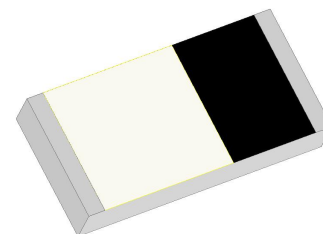
试用水印

## 特征 Feature

- 重量轻，结构紧凑 Light weight, compact
- 高带宽，低成本 Wide bandwidth, low cost
- 高增益内置天线 Built-in antenna with high gain
- 工作温度 Operating Temp. : -40°C~+85°C

## 应用 Application

- 蓝牙，无线局域网，移动电视 Bluetooth, Wireless LAN, Mobile TV
- 家用射频系统 Home RF system, etc



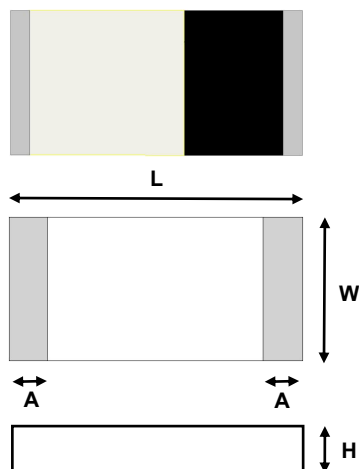
**CS-2450-31-A**

## 电气特性 Electrical Characteristics per line(TA=25°C)

参数 Parameter	规格 Specification	单位 Units
频带 Frequency Band	2400~2483	MHz
极化 Polarization	Linear	
*峰值增益 Peak Gain	2.67	dBi
*峰值效率 Peak Efficiency	72.3%	%
阻抗 Impedance	50	$\Omega$

\*测试条件：测试板尺寸98 × 65 mm；匹配电路： $\pi$ 型匹配电路。 Test condition: Test board size 98\* 65 mm; Matching circuit: Pi matching circuit will be required.

## 产品尺寸 Product Dimension



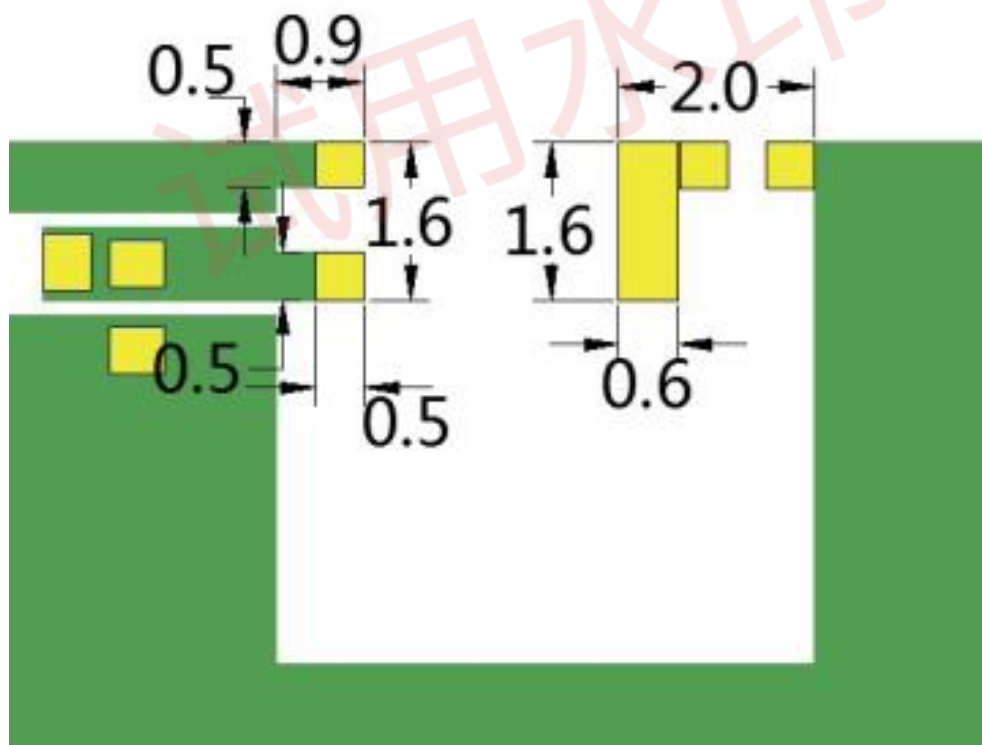
Units:mm

L	W	A	H
3.10±0.10	1.55±0.10	0.40±0.20	0.50±0.10

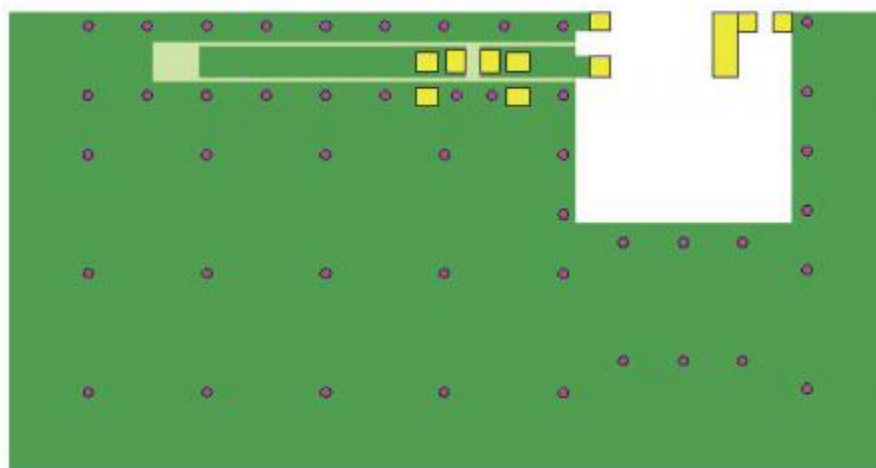
■ 编号系统 Part Numbering System

CS	-	2450	-	31	-	A
Material		Frequency		Size		Type

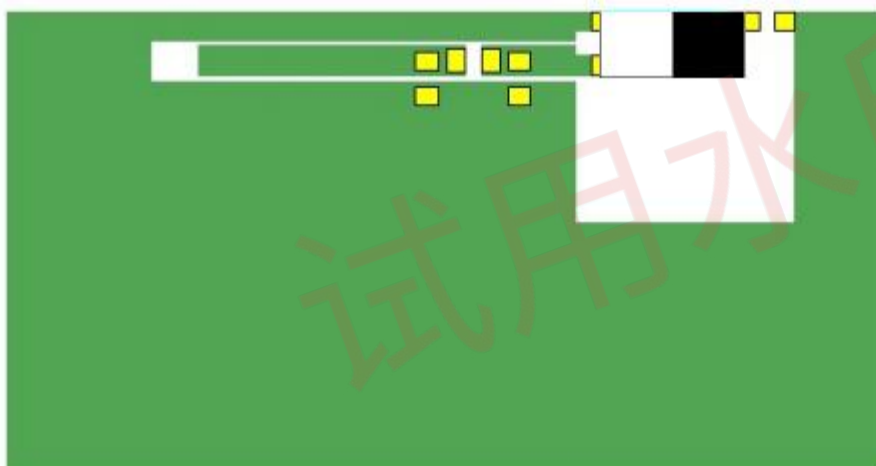
■ PCB推荐设计 PCB Layout



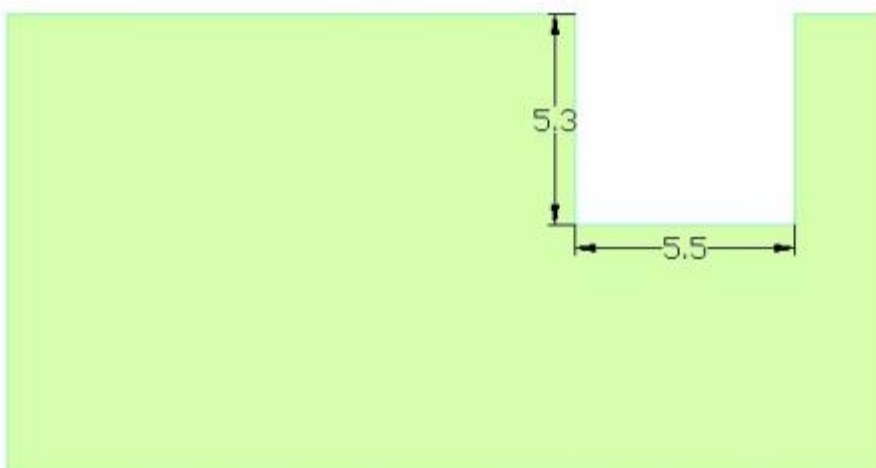
■ 评价板 Evaluation Board



- ANT
- PAD
- TOP
- BOTTOM
- VIA



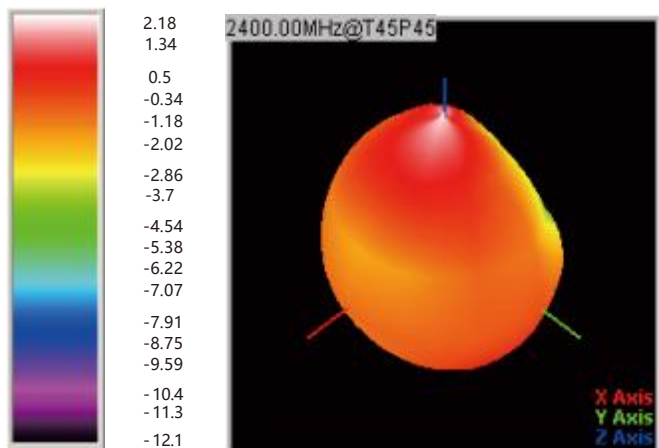
- ANT
- PAD
- TOP
- BOTTOM



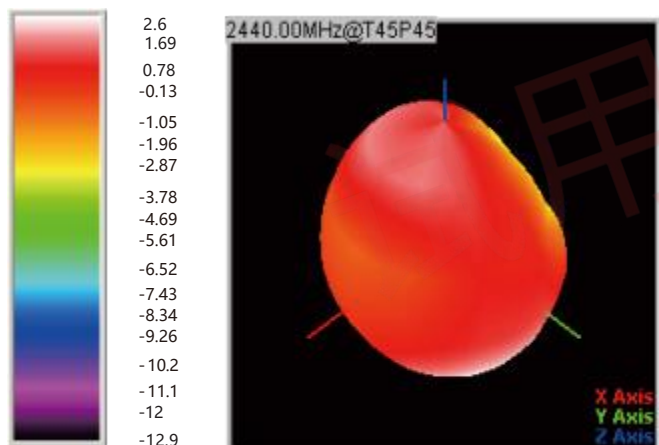
■ **辐射方向图 Radiation Patterns**

□ 2.4GHz WLAN BAND

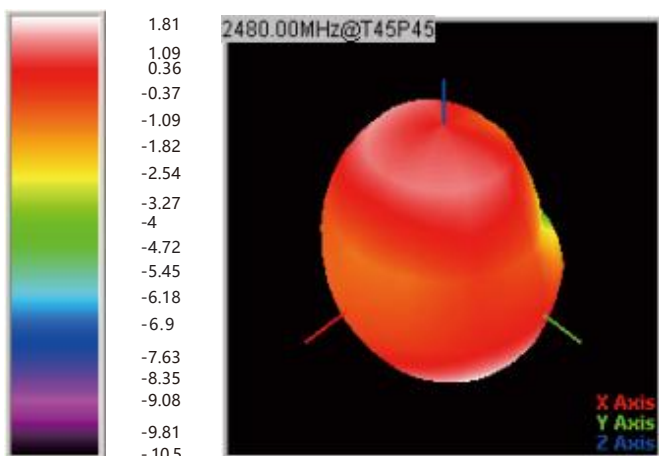
◎ 3D增益 (2400MHz) 3D Gain Pattern (2400 MHz)



◎ 3D增益 (2440MHz) 3D Gain Pattern (2440 MHz)



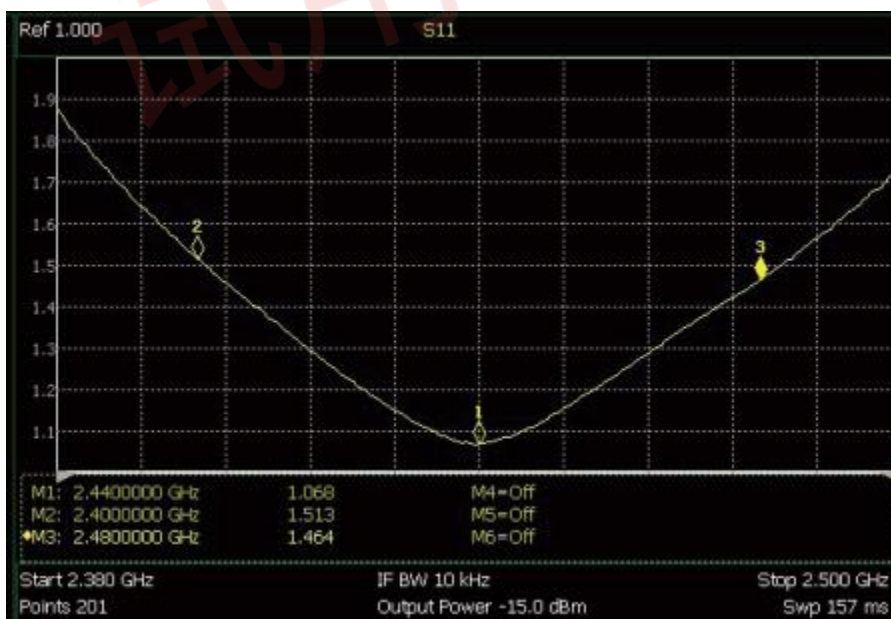
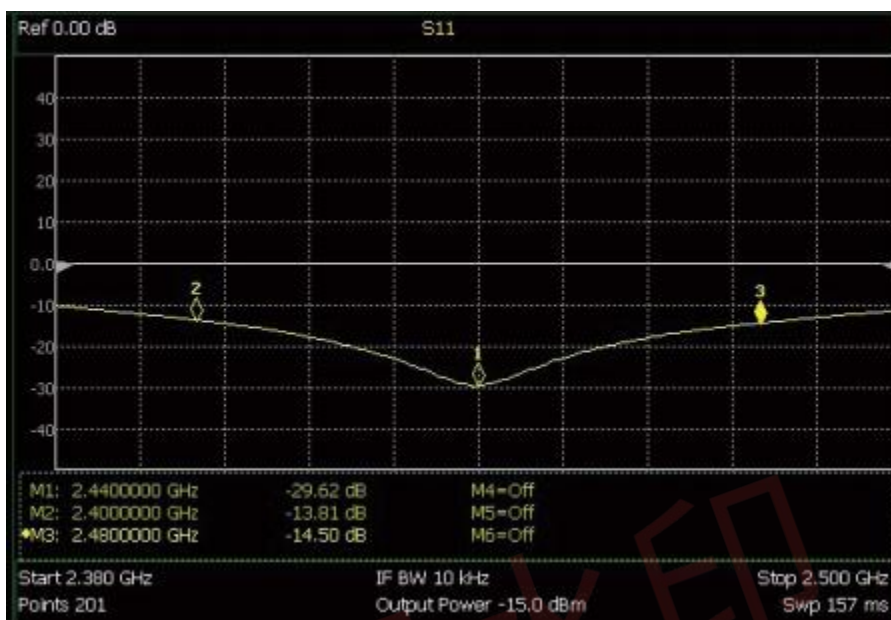
◎ 3D增益 (2480MHz) 3D Gain Pattern (2480 MHz)



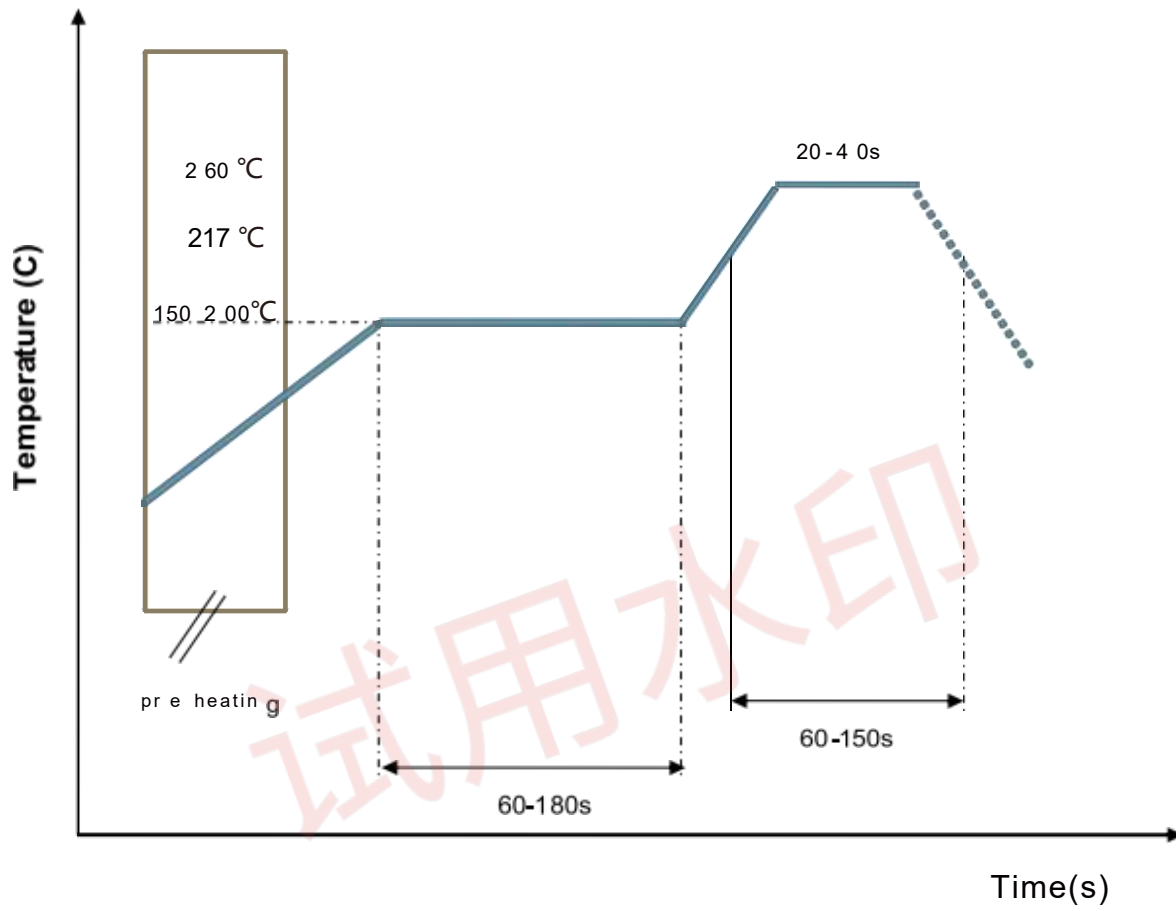
Freq (MHz)	Effi (%)	Gain (dBi)
2400	74.8	2.67
2410	72.59	2.54
2420	71.6	2.25
2430	70.29	2.07
2440	71.23	2.16
2450	72.3	2.37
2460	71.04	2.52
2470	65.95	2.35
2480	64.42	2.42
2490	62.59	2.31
2500	60.01	2.07

■ 频率特性 Frequency Characteristics

□ S11和驻波比 S11 AND VSWR

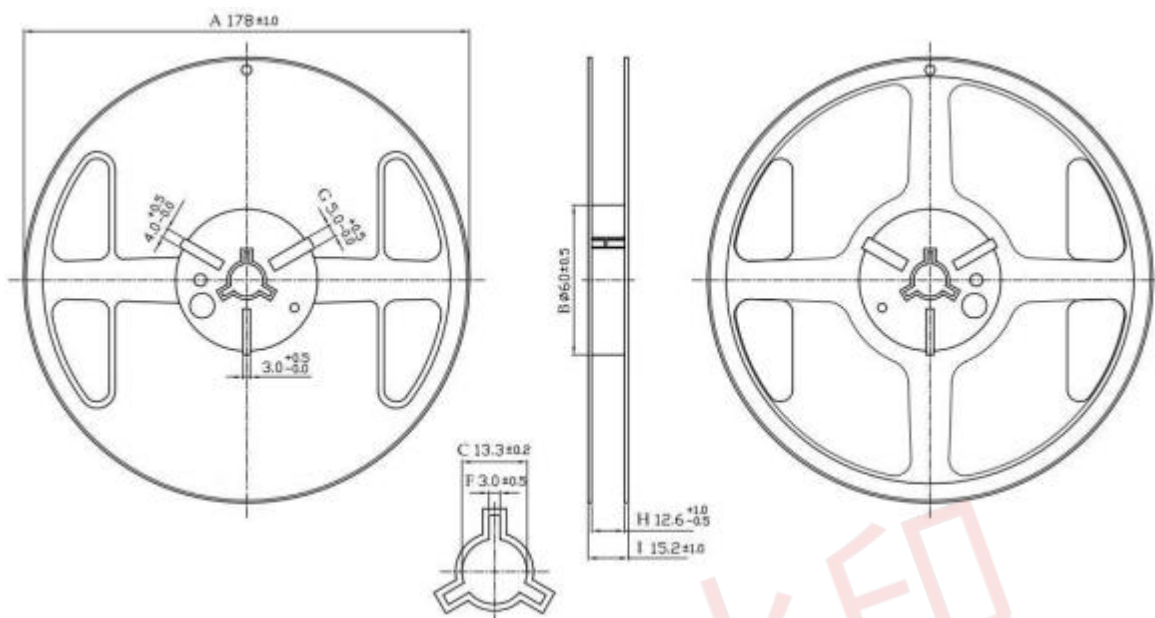


■ 推荐回流焊参数 RECOMMENDED REFLOW PROFILE

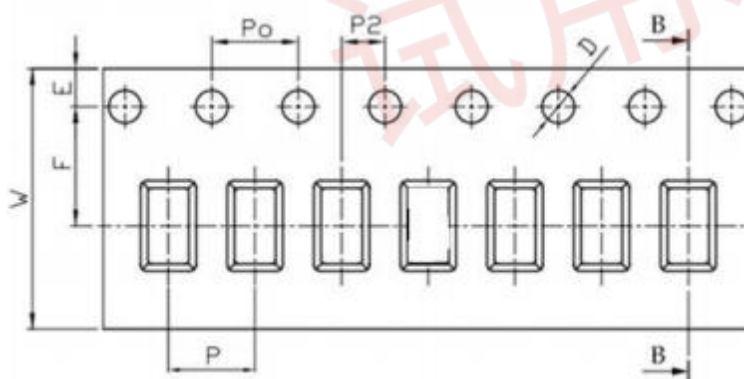


■ 包装形式 Packaging Style

□ 卷尺寸 REEL DIMENSIONS



□ 带尺寸 TAPE DIMENSIONS



Feature	Specifications	Tolerances
W	8.00	±0.30
P	4.00	±0.10
E	1.75	±0.10
F	3.50	±0.10
P2	2.00	±0.10
D	1.50	+0.10 -0.00
P0	4.00	±0.10
10P0	40.00	±0.20

数量: 每卷5000只

Quantity: 5000 pieces per 7 reel



## 订货信息 Order Information

Device	Package	Net Weight	Carrier	Quantity	HSF Status
CS-2450-31-A	3216	0.0089g	Tape&Reel	5000pcs	RoHS compliant

## Revision history

Date	Revision	Description of changes
2018-11-5	1.0	First Version
2022- 8-5	1.1	Update the package information