

# DH902 Antenna Report

## ANT SPEC

Frequency Band: 2.400GHz~2.500GHz

Antenna type: Unipolar serpentine antenna

Model Name: 2.4GHz PCB ANT

Manufacture: Xinfeng Senlian Technology Co., Ltd

Address: Southside of LuYuan Road, west of industrial park, Xinfeng County,

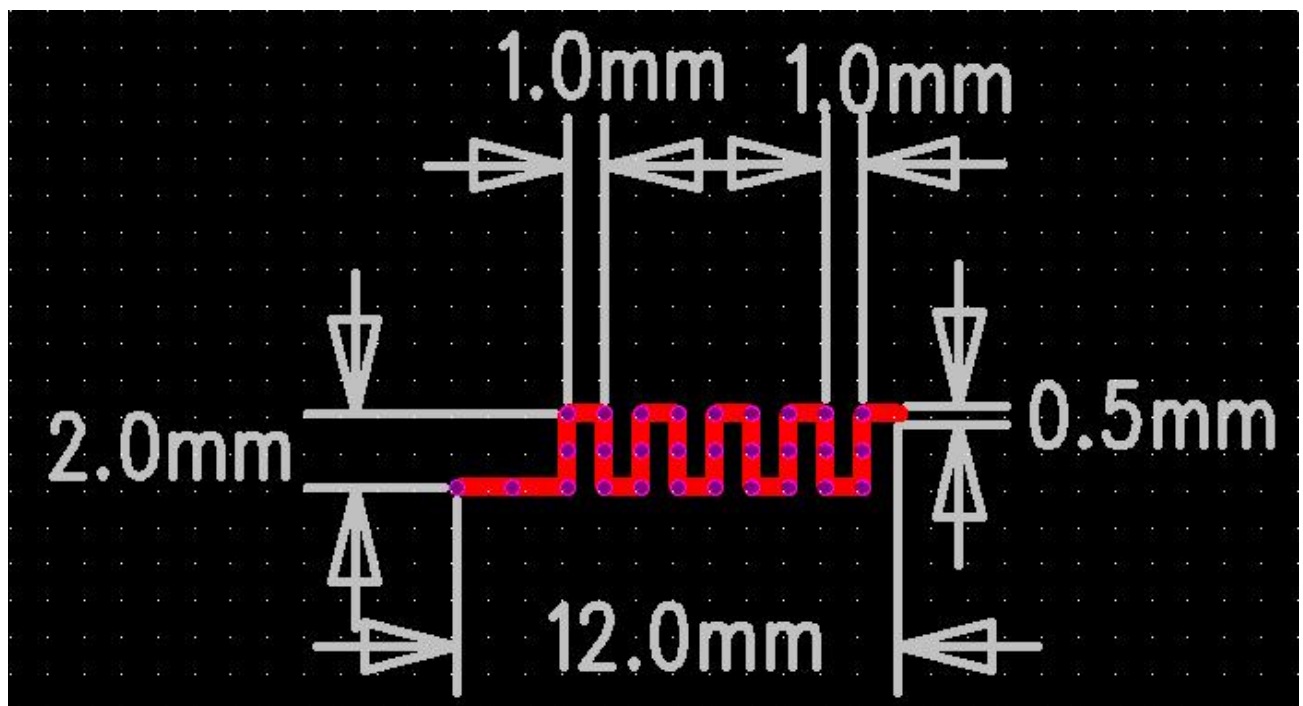
Ganzhou City, Jiangxi Province (No.8, Xinda circuit science park)

Ganzhou, Jiangxi 341600 China.

Antenna Type: PCB Antenna GAIN: -1.44dBi

Antenna Type: Copper wire Antenna GAIN: -1.09dBi

## Antenna Photo & Length(mm)



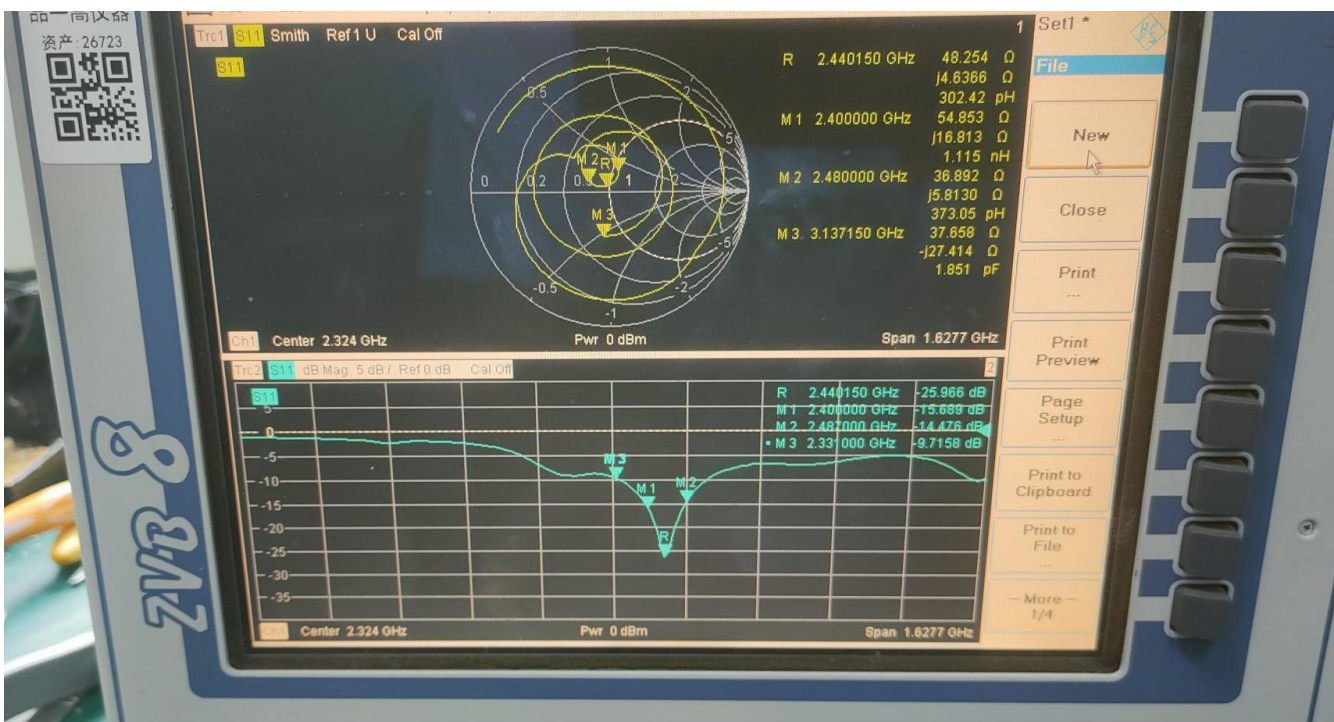
## Frequency gain:

	(M1)	(R)	(M2)
Frequency	2.4000000	2.440150	2.480000
	GHz	GHz	GHz
RX	-1.5689dB	-2.5966dB	-1.4476dB

## Smith coordinates

	(M1)	(R)	(M2)
Frequency	2.4000000	2.440150	2.480000
	GHz	GHz	GHz
	54.853 $\Omega$	48.254 $\Omega$	36.892 $\Omega$
RX	+j16.81 $\Omega$	+j4.6366 $\Omega$	+j5.8130 $\Omega$

## RX VNA Photo1



---

## ANT SPEC

Frequency Band: 2.400GHz~2.500GHz

Antenna type: Unipolar copper wire antenna

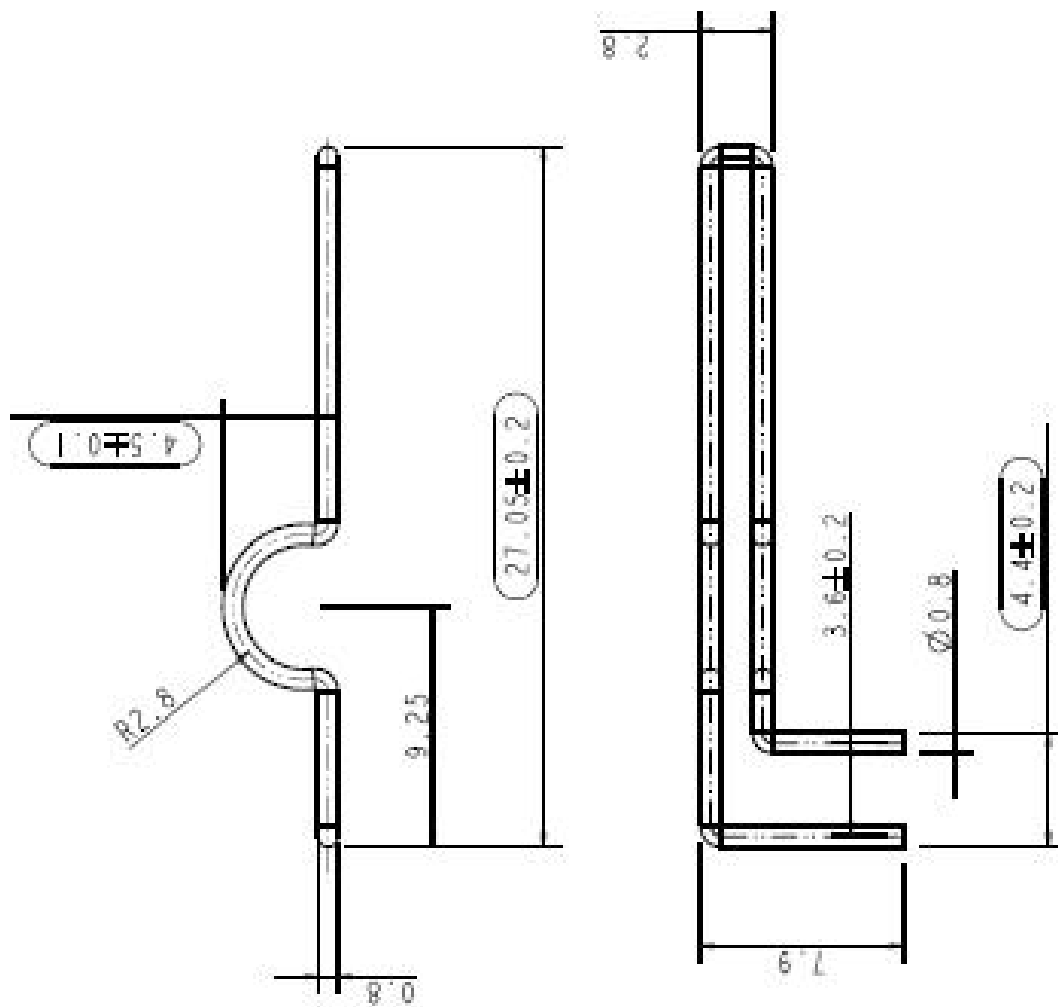
Model Name: 2.4GHz ANT

---

Manufacture:Shenzhen Xi ndongchuang precision hardware co.,Ltd  
Address:No.221 Cai feng Middle Road, Shajing Town. Baoan District, Shenzhen.

### Antenna Photo& Length(mm)

---



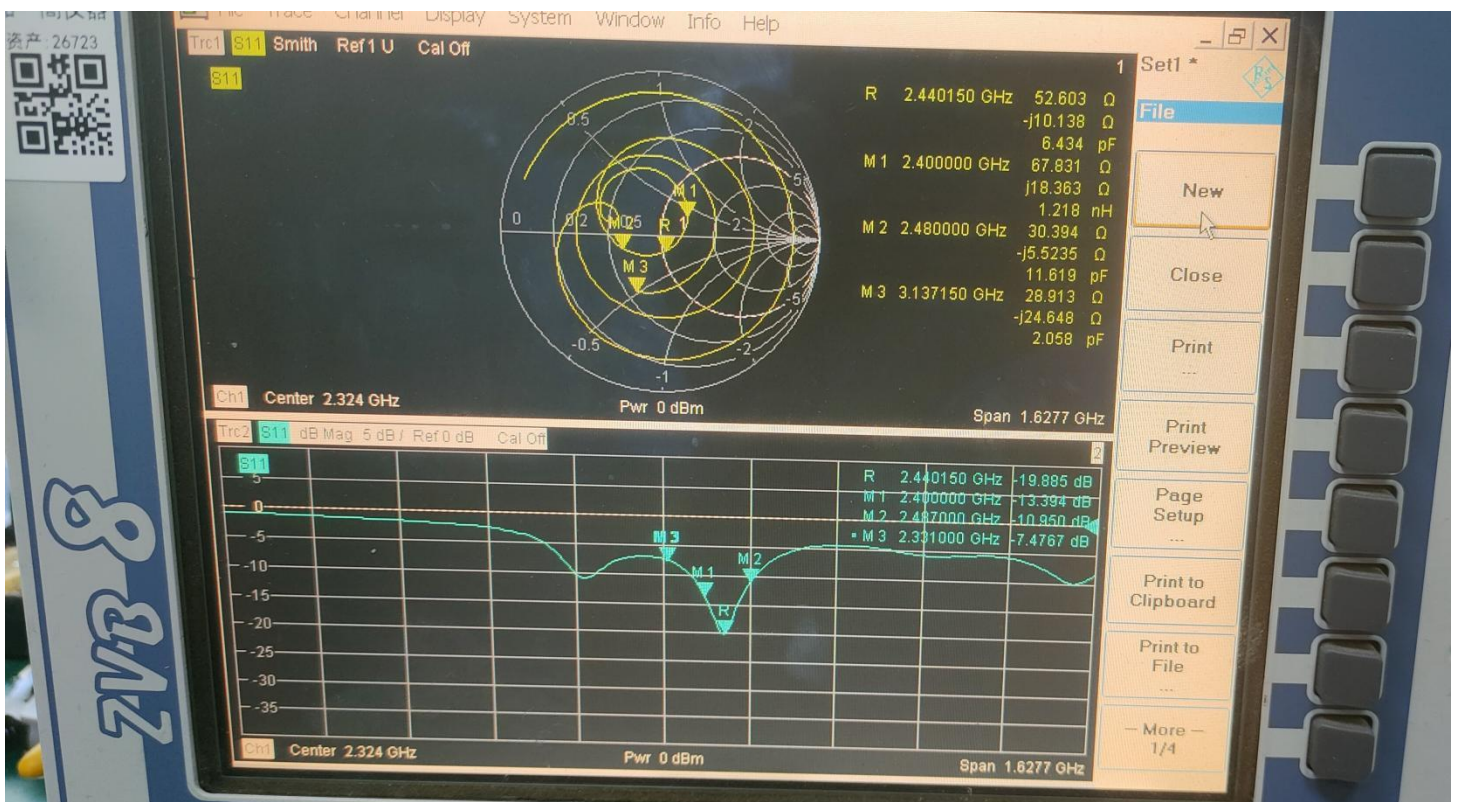
## Frequency gain:

	(M1)	(R)	(M2)
Frequency	2.4000000	2.440150	2.480000
	GHz	GHz	GHz
RX	-1.3394dB	-1.9885dB	-1.0950dB

## Smith coordinates

	(M1)	(R)	(M2)
Frequency	2.4000000G	2.440150GH	2.480000GH
	Hz	Z	Z
	67.831 $\Omega$	52.603 $\Omega$	30.394 $\Omega$
RX	+j18.363 $\Omega$	-j10.138 $\Omega$	-j5.5235 $\Omega$

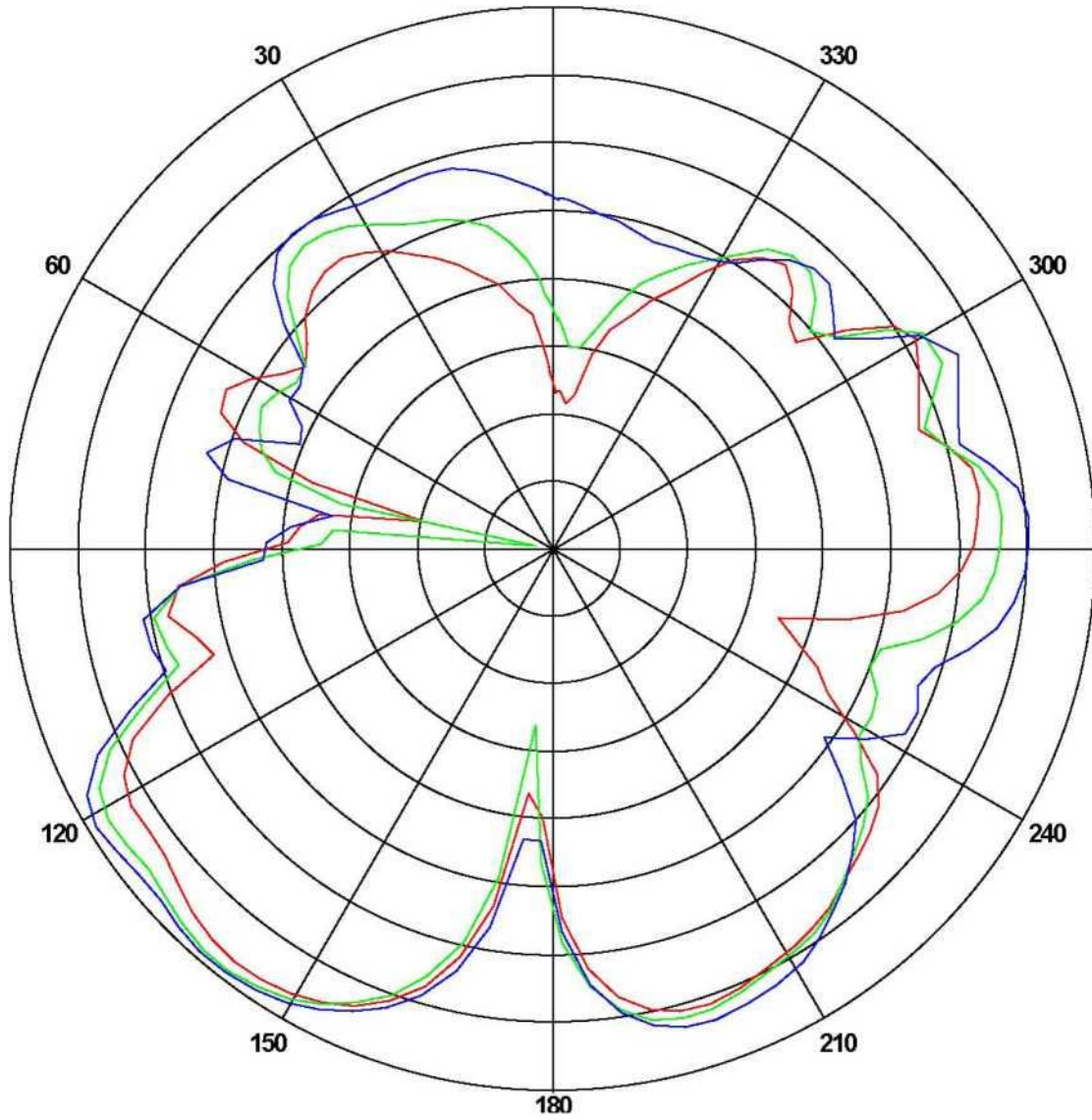
## RX VNA Photo2



Horizontal: 2400 MHz 2450 MHz 2500 MHz

Power (dBm)

Max: 0 Min: -40 Scale: 5/div





Vertical: 2400 MHz 2450 MHz; 2500 MHz

Power (dBm)

Max: 0 Min: -30 Scale: 5/div

