





## 1. Graphic for reference



Figure 2 0.8\*20mmBT

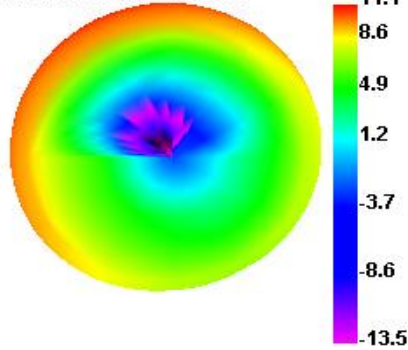
Name	ANTENNA
Model	LT13
Frequency	2.4Ghz
Input impedance	50Ω
Allowed power	5mW
Working temp.	-25 ~ +65 °C
Storage temp.	-40 ~ +85 °C
Weight	0.25g
Antenna gain 天线增益	-1dBi

## 2.OTA(Free Space)

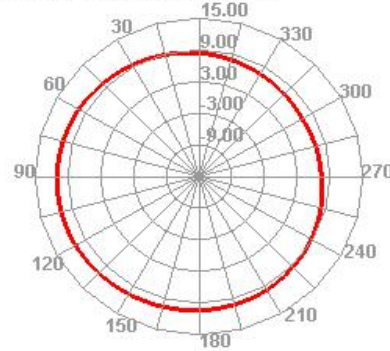
Channel	TRP (dBm)	TIS (dBm)
0	6.3	-91.1
39	6.5	-91.3
78	6.6	-91.2

### 3.Field

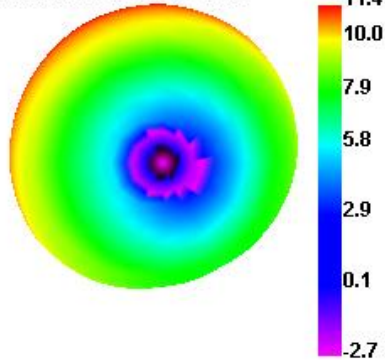
**Bluetooth 0 TRP**



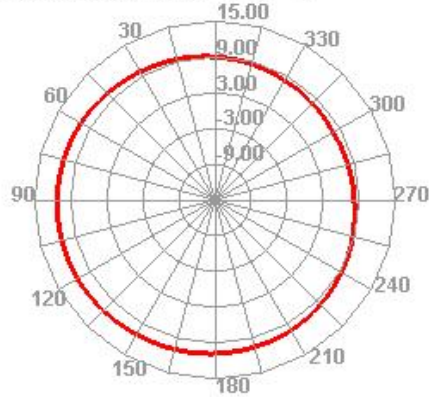
**Bluetooth 0 TRP H**



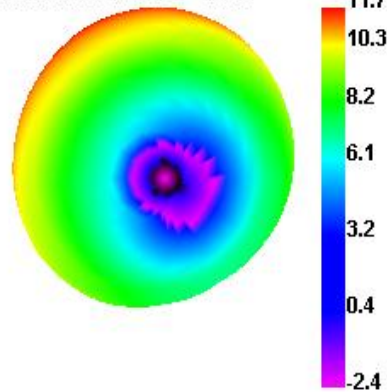
**Bluetooth 39 TRP**



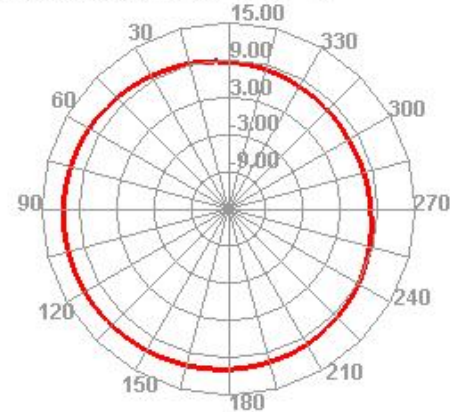
**Bluetooth 39 TRP H**



**Bluetooth 78 TRP**



**Bluetooth 78 TRP H**

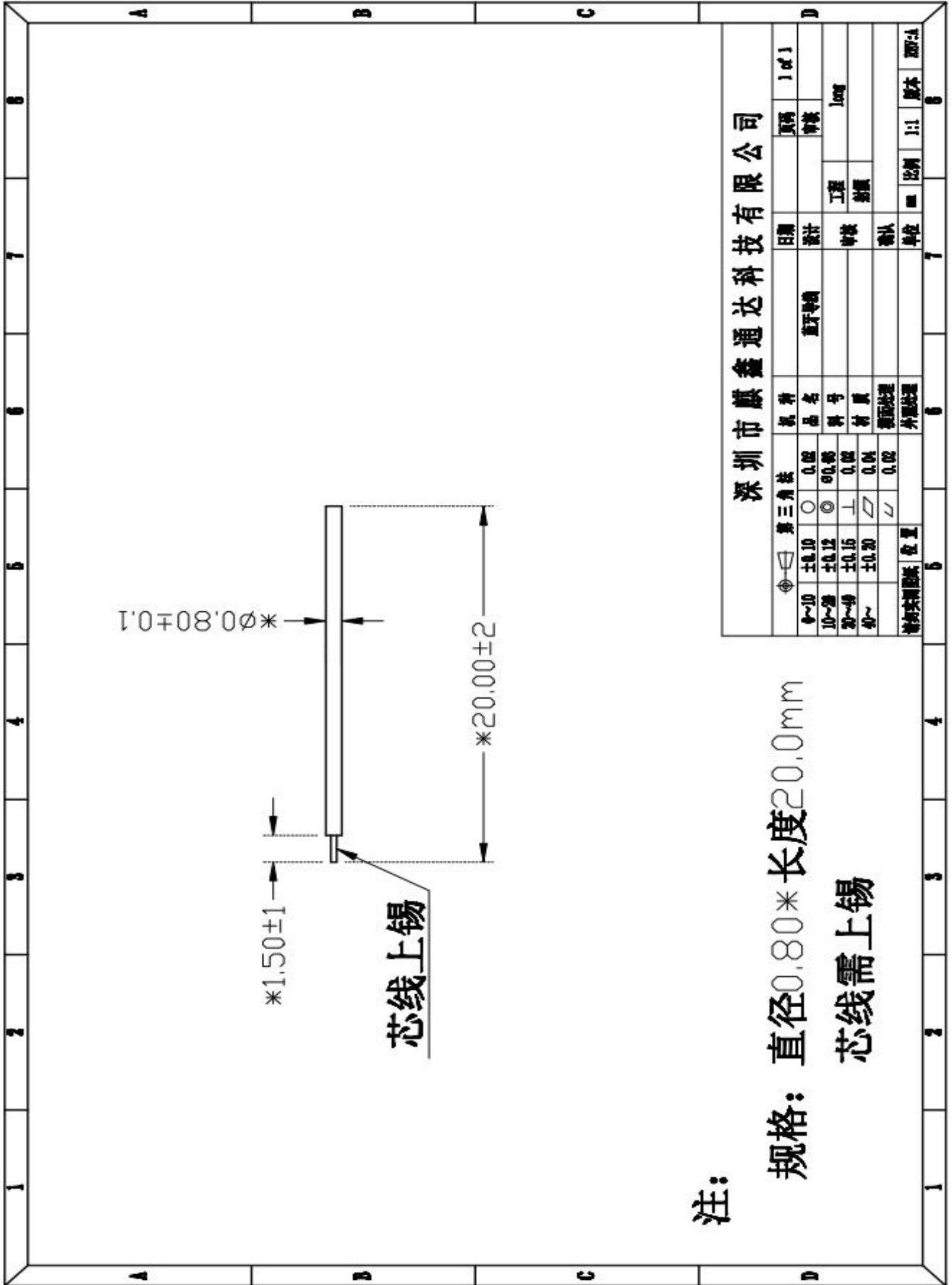


### 4. BT Test

Test term	Environment	Max pairing distance	BT Call distance	
BT	Office	16-18m	10-12m	



## 5. Blueprint



注:

规格: 直径0.80\*长度20.0mm  
芯线需上锡

深圳市麒鑫通达科技有限公司

第三角法	机种	日期	页码	1 of 1
$\phi \sim 10$ $\pm 0.10$ $\pm 0.12$ $\pm 0.15$ $\pm 0.20$	品名	设计	审核	
$\circ$ $\odot$ $\perp$ $\nabla$ $\nabla$	料号	审核	工程	long
位置	材质	确认	材质	
表面处理	表面处理	单位	比例	1:1
外部处理	外部处理	mm	版本	001-A