

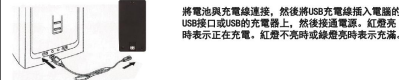
飄移車使用說明書

請在使用前詳細閱讀本使用說明書,請保管好本說明書以備不時之用

包裝清單



遙控車及遙控器的電池安裝和充電



將電池與充電線連接,然後將USB充電線插入電腦的USB接口或USB的充電器上,然後接通電源。紅燈亮時表示正在充電,紅燈不亮時或綠燈亮時表示充滿。



遙控器電池安裝方法
(1)將遙控器側面的電池蓋打開
(2)按正確極性裝入AA電池2顆,蓋上電池蓋。



注意電池插口位置,準確放入電池槽中。

電池放入後,推動兩邊卡

彈開輪胎固定螺絲,取下輪胎,然後把新的輪胎按照原來位置安裝上去,再彈緊螺絲固定好。

遙控器說明



旋轉內控制輪向外用力拉出,然後安裝到另外一邊的安裝孔上,就可以完成左右手模式切換

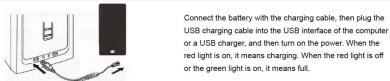
OPERATION MANUAL

Please read this Manual carefully before use and keep it properly for future use.

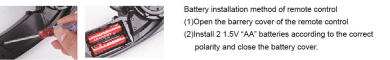
Packing list



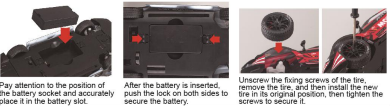
Battery installation and charging of remote control car and remote control



Connect the battery with the charging cable, then plug the USB charging cable into the USB interface of the computer or a USB charger, and then turn on the power. When the red light is on, it means charging. When the red light is off or the green light is on, it means full.



Battery installation method of remote control
(1)Open the battery cover of the remote control.
(2)Install 2 1.5V "AA" batteries according to the correct polarity and close the battery cover.



Pay attention to the position of the battery socket and accurately place it in the battery slot.

After the battery is inserted, push the lock on both sides to secure the battery.

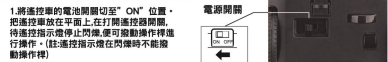
Unscrew the fixing screws of the tire, remove the tire, and then install the new tire in its original position, then tighten the screws to secure it.

Function of remote control

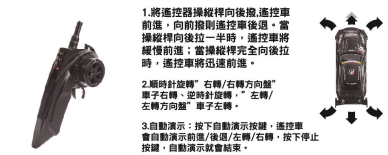


Pull out the steering control wheel outwards, and then install it on the mounting hole on the other side to complete the switch between left and right hand modes

操作方法



產品使用基本操作圖



保養與維修

- 長時間不玩,就要取出電池。
- 用溫布輕輕的擦拭車。
- 勿把玩具放在高溫、潮濕及陽光直射的地方。
- 不要把玩具放在水裡,這樣會損壞電子元件。

注意事項

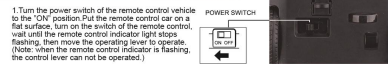
- 安裝或更換電池時請注意正負極。
- 若遙控器電池電量不足,指示燈變暗或不亮,換新電池即可。
- 當給充電電池充電時,需要成人監督。
- 不可使用新舊或不同類型的電池。
- 操作時,注意附近樓宇干擾,否則會影響遙控距離。
- 充電時請將遙控器放在充電座上,並將遙控器的電源開關撥到"OFF"位置,並取出遙控器車身的電池。
- 警告:充電器用本廠配發USB線充電,為避免用與市面假劣USB線充電,否則發生任何損壞概不負責。

溫馨提示

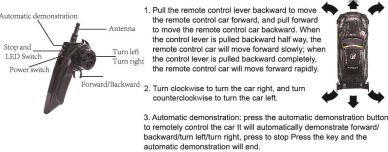
- 當車移動時,請不要用手觸摸遙控器的四個車輪,以免損壞遙控車。



Operation method



Basic operation diagram for product use



Maintenance and repair

- If you do not use it for a long time, please take out the battery.
- Wipe the car gently with a wet cloth.
- Do not put the product in high temperature, high humidity and direct sunlight.
- Do not put the product in the water, or the electronic components will be damaged.

Precautions

- Please pay attention to the polarity when installing or replacing the battery. When rechargeable battery can not be charged.
- Charging a rechargeable battery should be supervised by adult. Do not use old or new batteries or different types of batteries.
- Please pay attention to the signal interference nearby during operation, otherwise the remote control distance will be affected.
- When the remote control car slows down, it means that the car is out of power. Please charge the remote control car according to the above method.
- If the remote control is out of power, the indicator will turn dark or does not light up. Please replace the battery with a new one.
- If you do not use it for a long time, please take out the battery in the remote control.
- Turn the power switch of the remote control car to "OFF" position, and take out the battery of the remote control car.
- Warning: The USB cable provided with this product is required for charging. Charges from other manufacturers cannot be used for charging. Do not use a charging head with a current exceeding 40A for charging. Otherwise, we will not be responsible for any problems.

Warm tips



This device complies with Part 15 of the FCC Rules. Operation is subject to the following two conditions: (1) this device may not cause harmful interference, and (2) this device must accept any interference received, including interference that may cause undesired operation

NOTE: This equipment has been tested and found to comply with the limits for a Class B digital device, pursuant to Part 15 of the FCC Rules. These limits are designed to provide reasonable protection against harmful interference in a residential installation. This equipment generates, uses and can radiate radio frequency energy and, if not installed and used in accordance with the instructions, may cause harmful interference to radio communications. However, there is no guarantee that interference will not occur in a particular installation.

If this equipment does cause harmful interference to radio or television reception, which can be determined by turning the equipment off and on, the user is encouraged to try to correct the interference by one or more of the following measures:

- Reorient or relocate the receiving antenna.
- Increase the separation between the equipment and receiver.
- Connect the equipment into an outlet on a circuit different from that to which the receiver is connected.
- Consult the dealer or an experienced radio/TV technician for help.

Warning: changes or modifications not expressly approved by the party responsible for compliance could void the user's authority to operate the equipment