

## User Manual

### LED desktop light

Thank you for your purchase! Please refer this instruction.



Surplife APP Remote Control

## Product Dimension



**Type-C Charging Port**  
Comes with USB A to Type C charging cable, the battery capacity is 3600MA



**ON / OFF switch**  
Power on, power off switch button(The lamp is not available on the app when the button is turned, you can press the button to active APP control again.)



**Touch Control**  
Short press to switch colors (warm white -> cold white -> red -> green -> blue -> yellow -> green)  
Long press to adjust the brightness

## Charging Tips:

When connecting to the power, the light will flash three times which indicating that the charging has begun, it takes about 5 hours to fully charge.

## Product parameters

Product name: LED desktop light

Wattage:3.5W

Connection Methods: BLE

APP: Surplife

Suitable Phone OS: Android 6.0/IOS11.0 or later

Color Temperature: 2700K-6500K

Working Temperature: -20 TO +45 °C

Voltage: 5V,50/60HZ

Battery capacity:3600MA

product dimensions: 97\*170mm



## Download Surplife App

Download " Surplife" APP from Apple Store and Google Play Store, or scan the QR code.



SURPLIFE APP



INSTRUCTION

## FAQ

Scan the "Instruction" QR code to read the electronic manual. Or enter the APP "FAQ" to learn more.

### How to connect smart device via Ble?

1. Turn on the Ble of the mobile phone and power on the device
2. Go to the "Surplife" app and click "Add Device" or click "+" in the top right corner.
3. Click on the device on the list, then select your device, done!

If the connection fails, please ensure the device is not controlled by another account, then reset the app and device and try again.

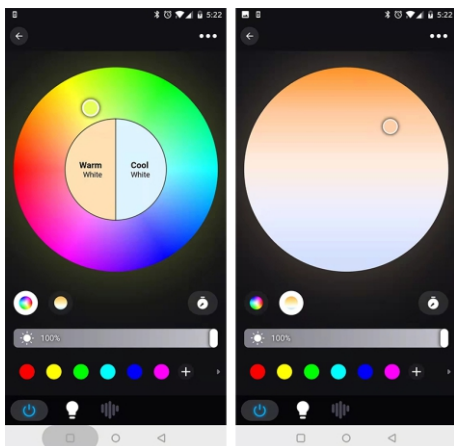
### How to restore factory Settings?

Turn on the device, hold the power button at the bottom for 10 seconds until the device flashes and the reset is successful.

## APP Software Function Introduction:

(1) Multicolor: Smart LED Bulb provides millions of color! Pick up a favorite color, then click the "+" in the lower right corner to save it; adjust the bar to dim the color brightness from 0-100%

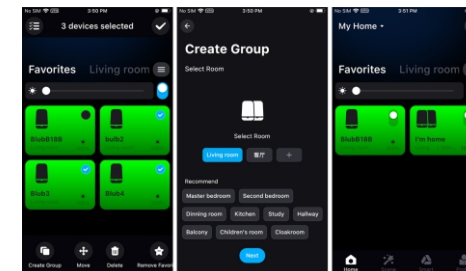
(2) Color Temperature: Color temperature can be chosen from 2700K-6500K, it meets many home scenes! You can adjust the bar to dim the light brightness from 0-100%.



(3) Scene Mode: There are 44 Built-in modes can be chosen, and add new custom scenes via the "+" button. Supported scenes mode: Switch, Color, White, Candle, Built-in, Customs.

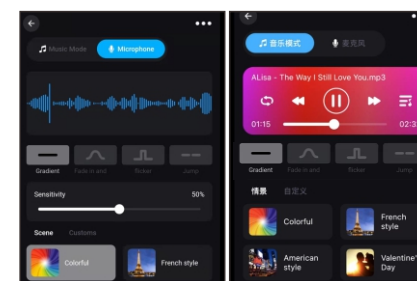


(4) Grouping operations: Long press one of devices, then tick the bulbs you want to grouped, create a group, rename it, done!

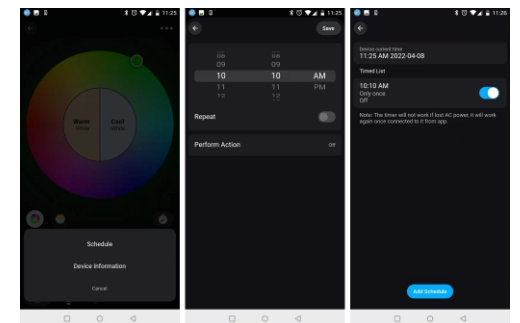


(5) Music Function  
Select your music songs in your smartphone and play them, lighting will dance based on the rhythm.

(6) Microphone: The light bulb's color will change with the sound rhythm when your phone microphone catches the sound. You can choose the mode of light bulb color change: Gradient; Breathe; Twinkle; Jump.

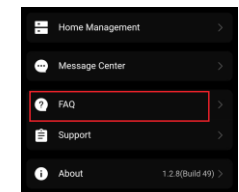


(7) Timing Settings: Click the "clock icon" for setting. In addition to setting the timer to turn on or off, you can also set the timer to turn on a certain mode.



## FAQ

Scan the QR code below to read the electronic manual. Or open the APP's menu bar of the APP and click the FAQ to learn more.



This device complies with part 15 of the FCC Rules. Operation is subject to the following two conditions: (1) This device may not cause harmful interference, and (2) this device must accept any interference received, including interference that may cause undesired operation.

Any Changes or modifications not expressly approved by the party responsible for compliance could void the user's authority to operate the equipment.

**Note:** This equipment has been tested and found to comply with the limits for a Class B digital device, pursuant to part 15 of the FCC Rules. These limits are designed to provide reasonable protection against harmful interference in a residential installation. This equipment generates uses and can radiate radio frequency energy and, if not installed and used in accordance with the instructions, may cause harmful interference to radio communications. However, there is no guarantee that interference will not occur in a particular installation. If this equipment does cause harmful interference to radio or television reception, which can be determined by turning the equipment off and on, the user is encouraged to try to correct the interference by one or more of the following measures:

- Reorient or relocate the receiving antenna.
- Increase the separation between the equipment and receiver.
- Connect the equipment into an outlet on a circuit different from that to which the receiver is connected.
- Consult the dealer or an experienced radio/TV technician for help.

RF warning for Portable device: The device has been evaluated to meet general RF exposure requirement. The device can be used in portable exposure condition without restriction.