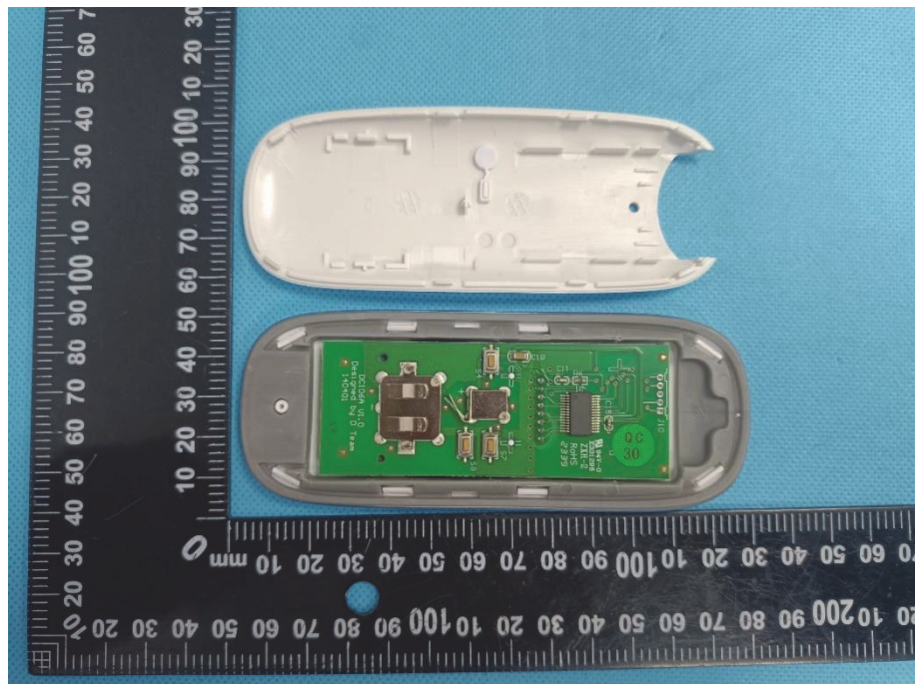


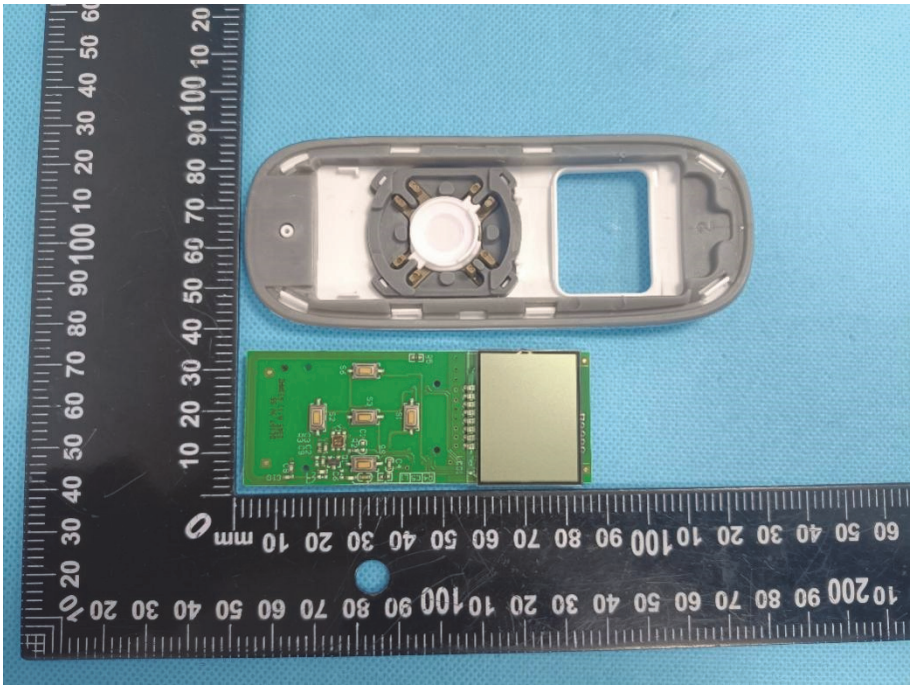
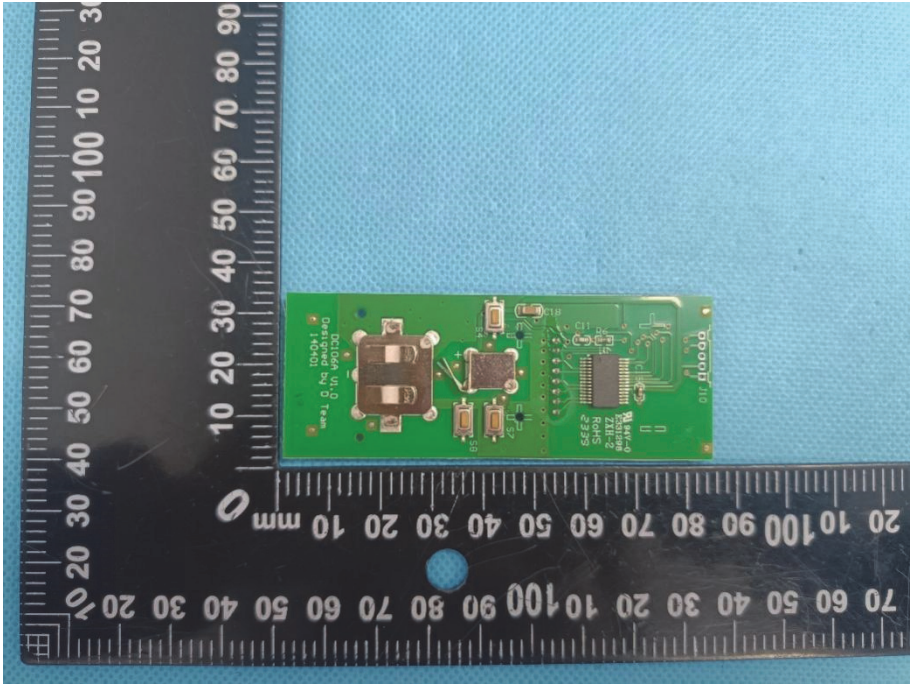
EXHIBIT 3 - EUT INTERNAL PHOTOGRAPHS

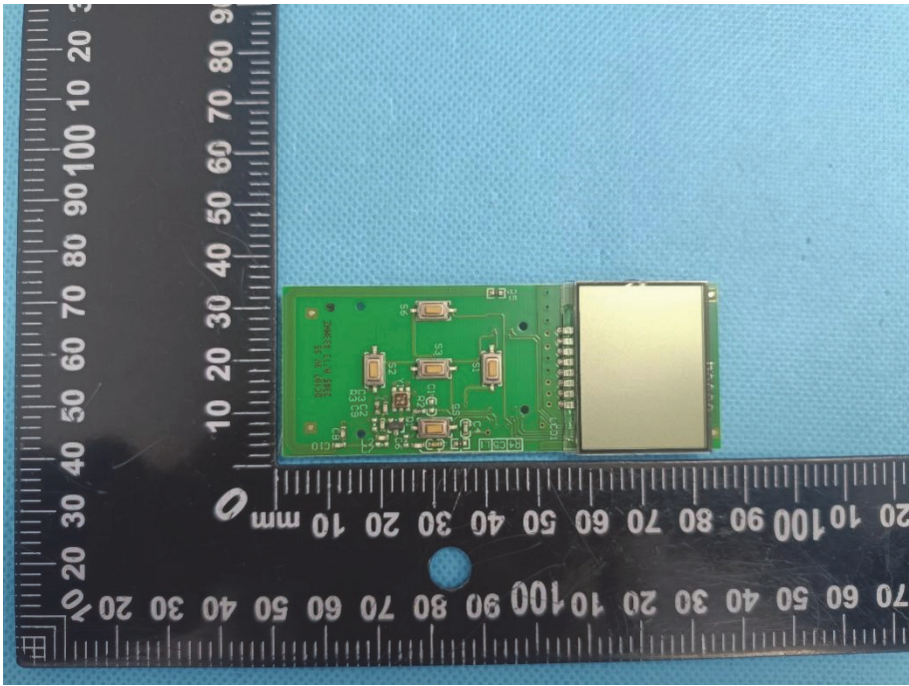
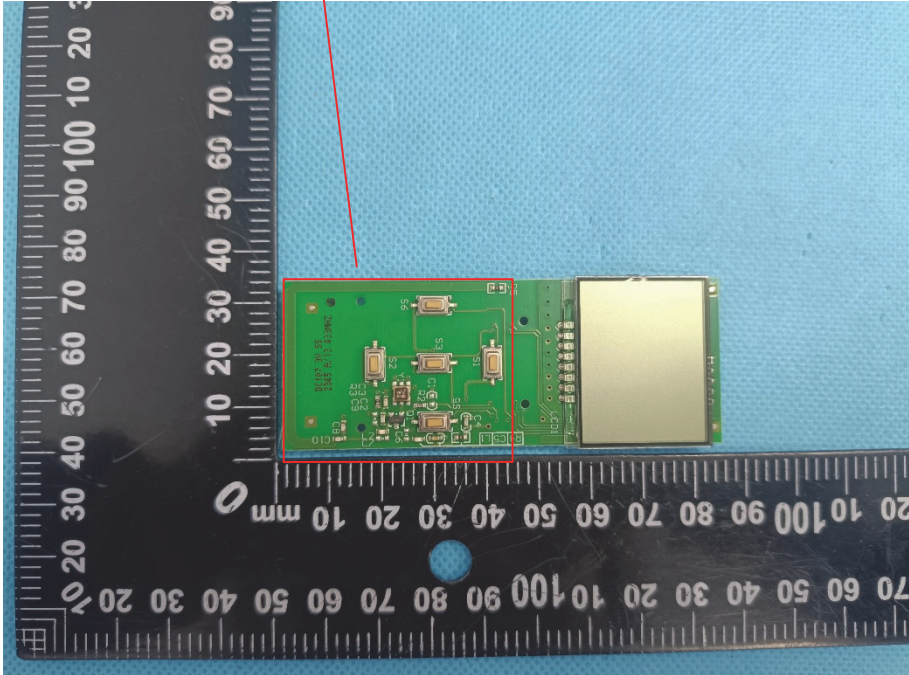
EUT Housing and Board View 1



EUT Housing and Board View 2



<p>EUT Housing and Board View 3</p>	 <p>A photograph showing the EUT housing and board view 3. The housing is a grey plastic component with a central circular opening and a rectangular cutout on the right. The board is a green PCB with various components, including a large silver component on the right. A black ruler with white markings is placed below the components for scale, showing measurements in millimeters.</p>
<p>Solder Board-Component View 1</p>	 <p>A photograph showing the solder board-component view 1. The board is a green PCB with various components, including a large silver component on the left and a smaller component on the right. A black ruler with white markings is placed below the board for scale, showing measurements in millimeters.</p>

<p>Solder Board-Component View 2</p>	 <p>A photograph of a green printed circuit board (PCB) component with various electronic components and a gold-colored rectangular component on the right. The board is placed on a blue textured surface next to a black ruler with white markings in millimeters. The ruler shows measurements from 0 to 100 mm.</p>
<p>Antenna View</p>	<p>433 Antenna</p>  <p>A photograph of the same green PCB component as in the previous view. A red rectangular box highlights a specific area on the board, and a red arrow points from a text box labeled "433 Antenna" to this area. The board is placed on a blue textured surface next to a black ruler with white markings in millimeters. The ruler shows measurements from 0 to 100 mm.</p>